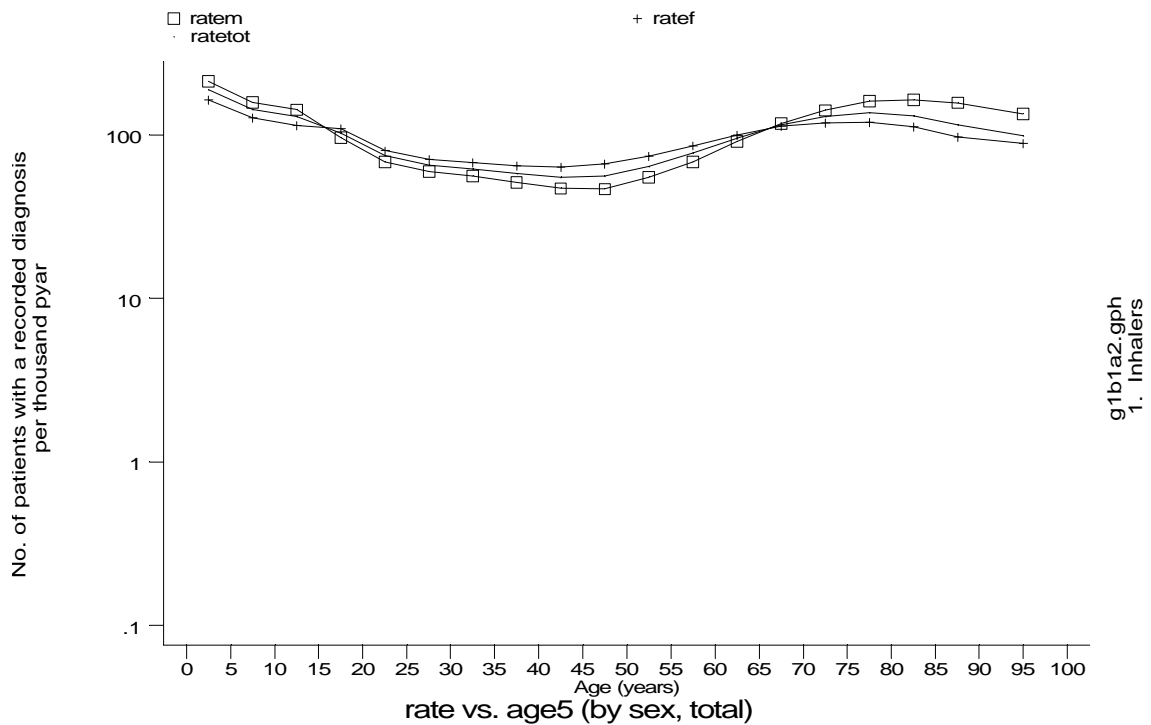
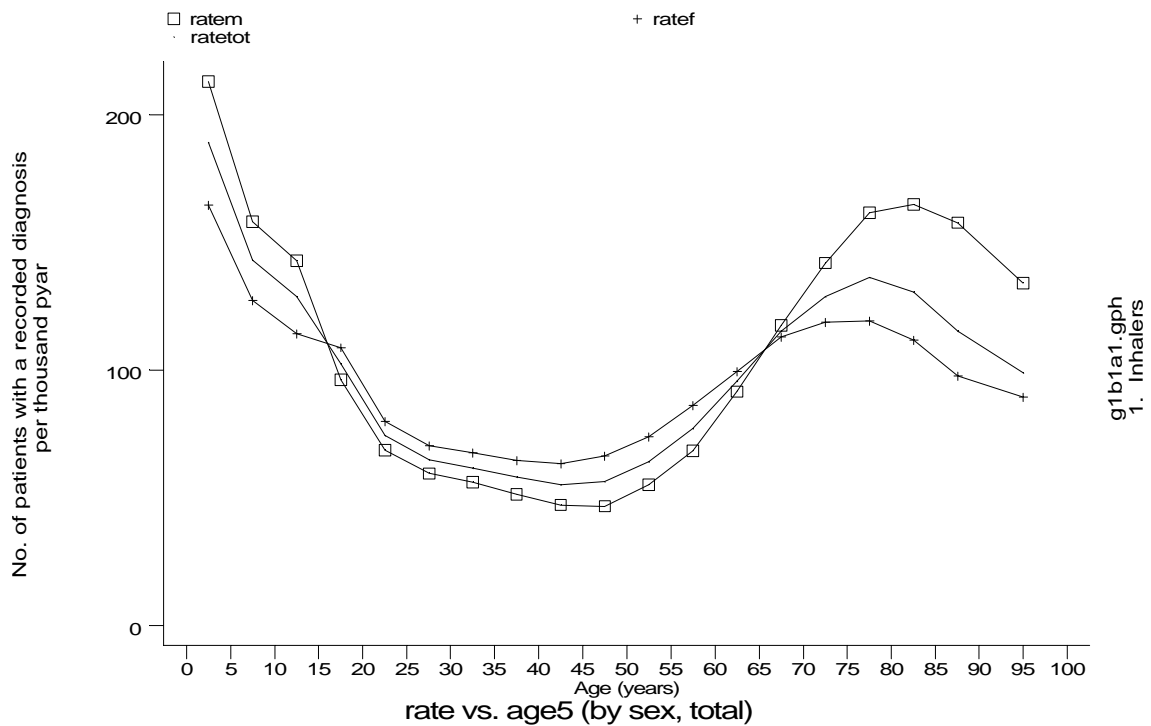


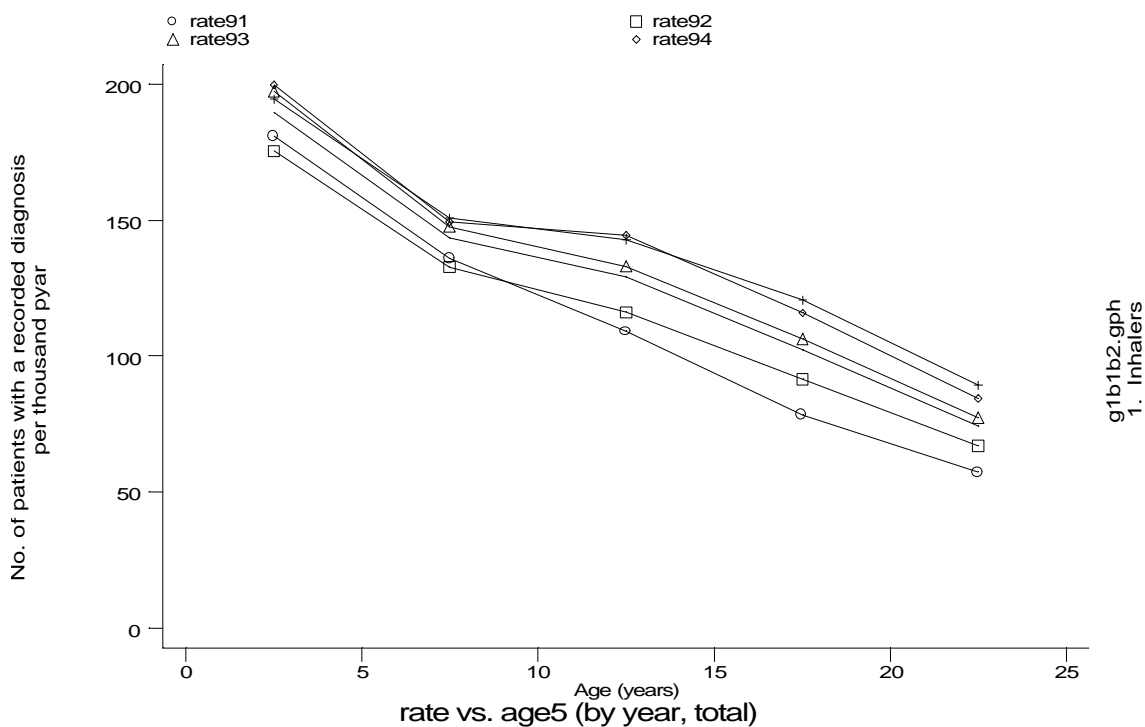
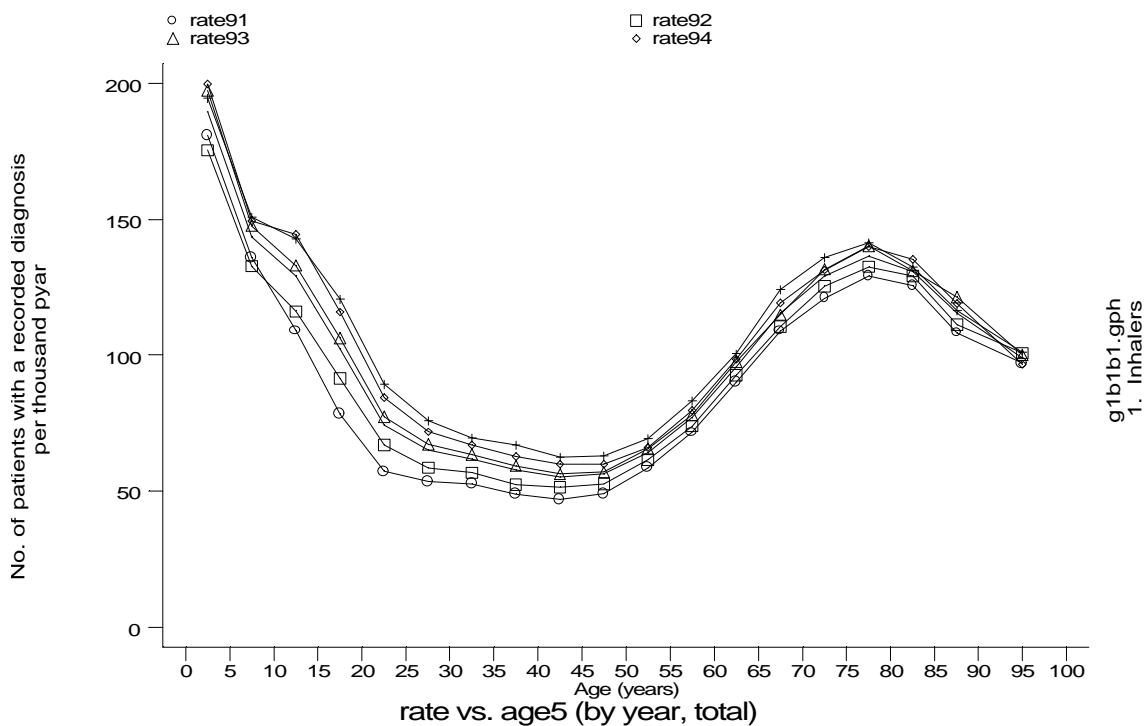
Age-sex distributions, yearly trends and cohort analysis (crude rates)

- GPRD Inhaler prescription only, England 1991-95



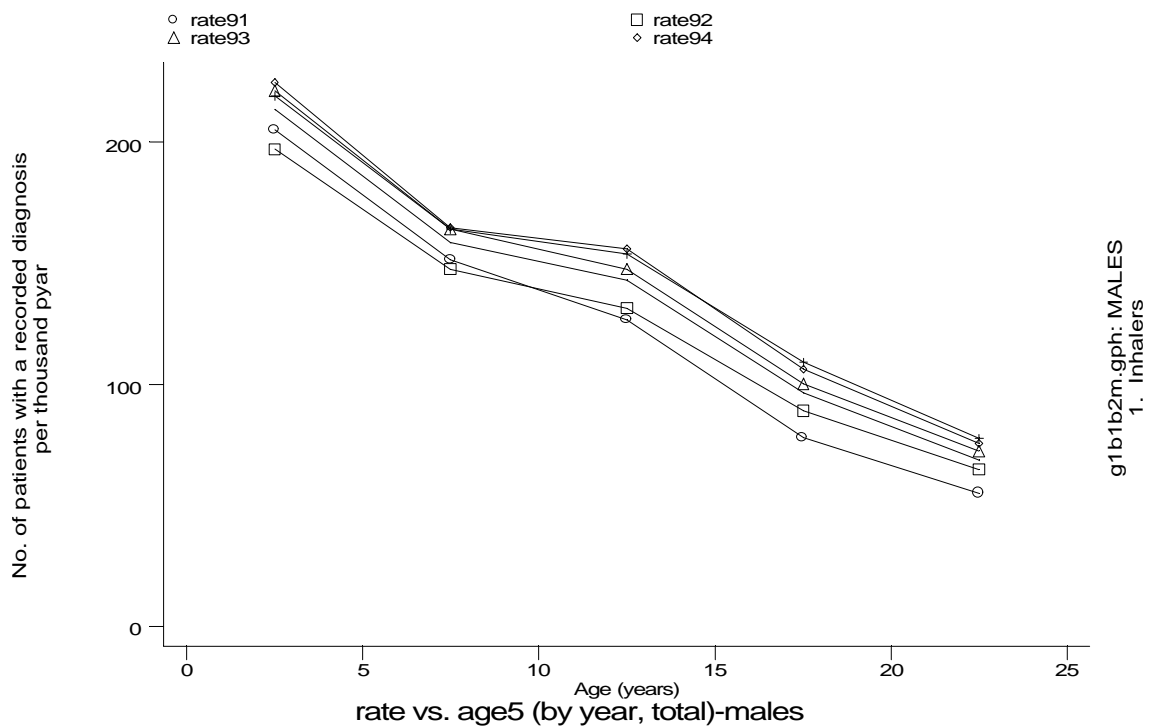
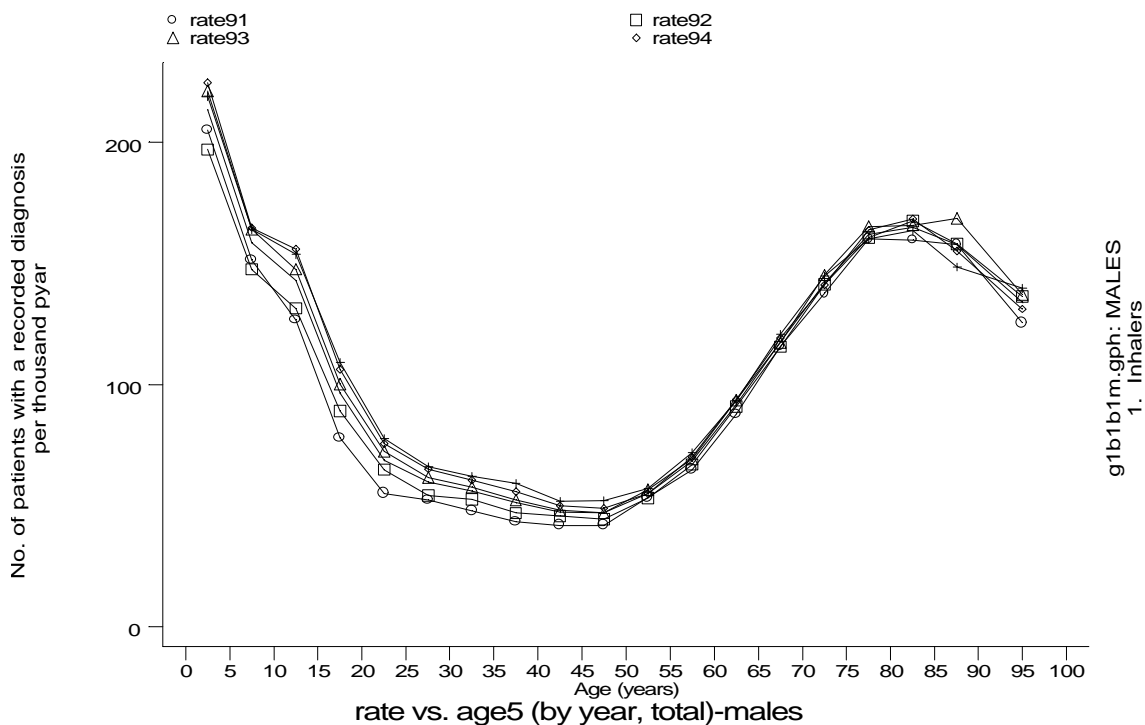
Age-sex distributions, yearly trends and cohort analysis (crude rates)

- GPRD Inhaler prescription only, England 1991-95



Age-sex distributions, yearly trends and cohort analysis (crude rates)

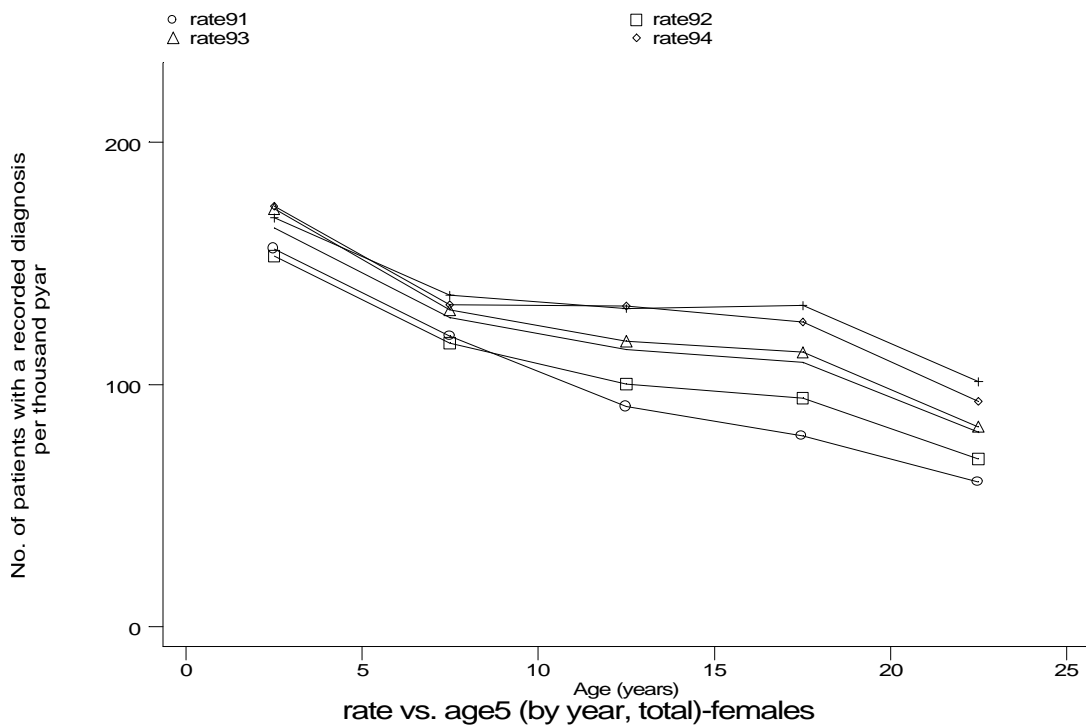
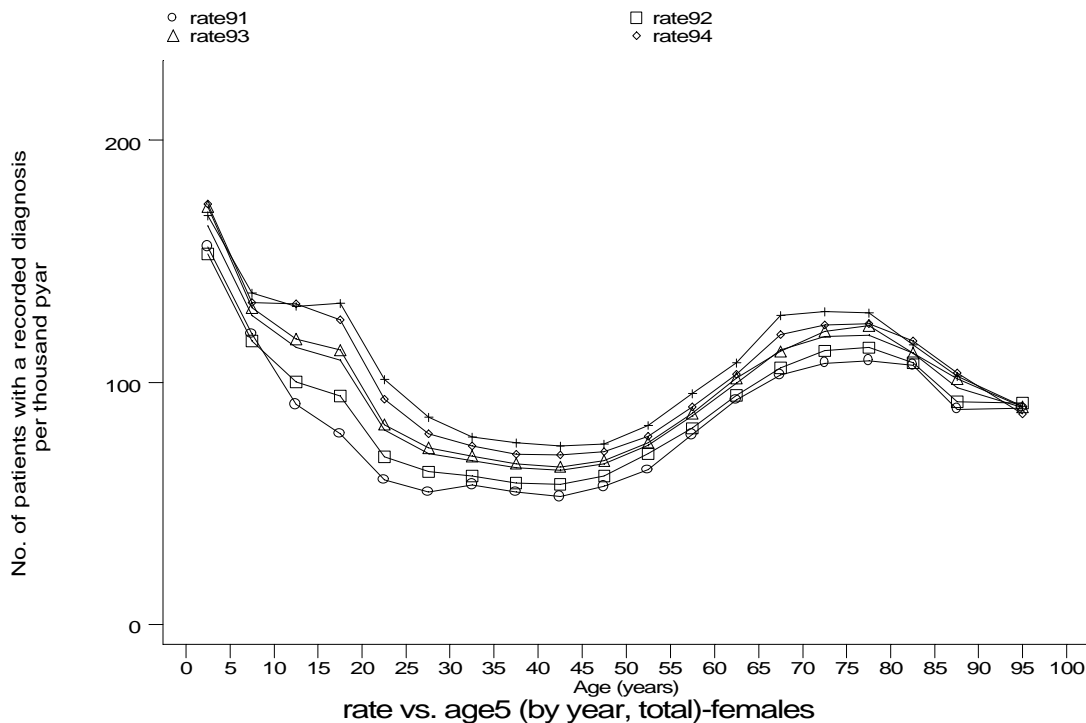
- GPRD Inhaler prescription only, England 1991-95



A6 Asthma standard output graphs

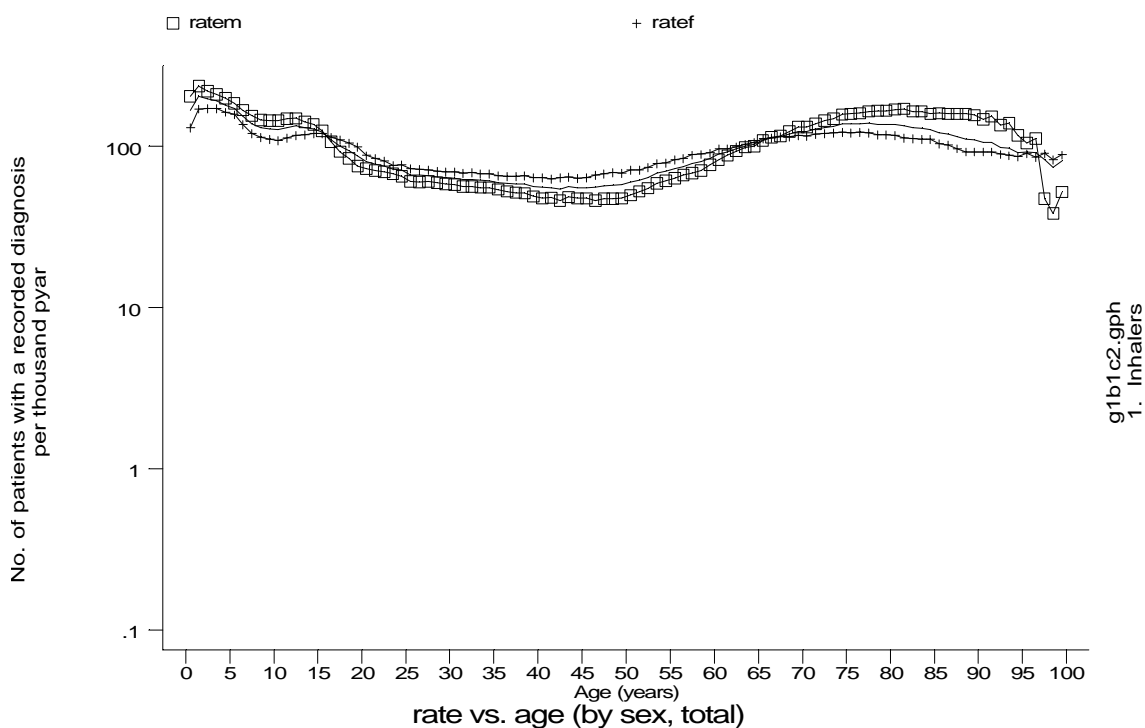
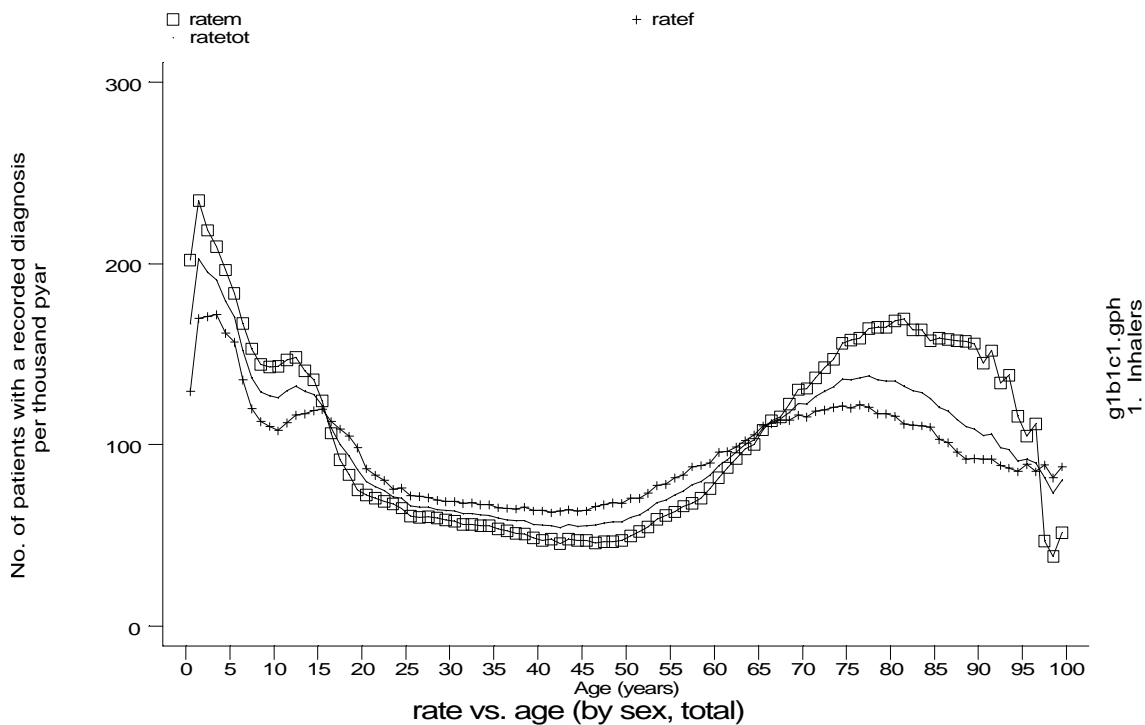
Age-sex distributions, yearly trends and cohort analysis (crude rates)

- GPRD Inhaler prescription only, England 1991-95



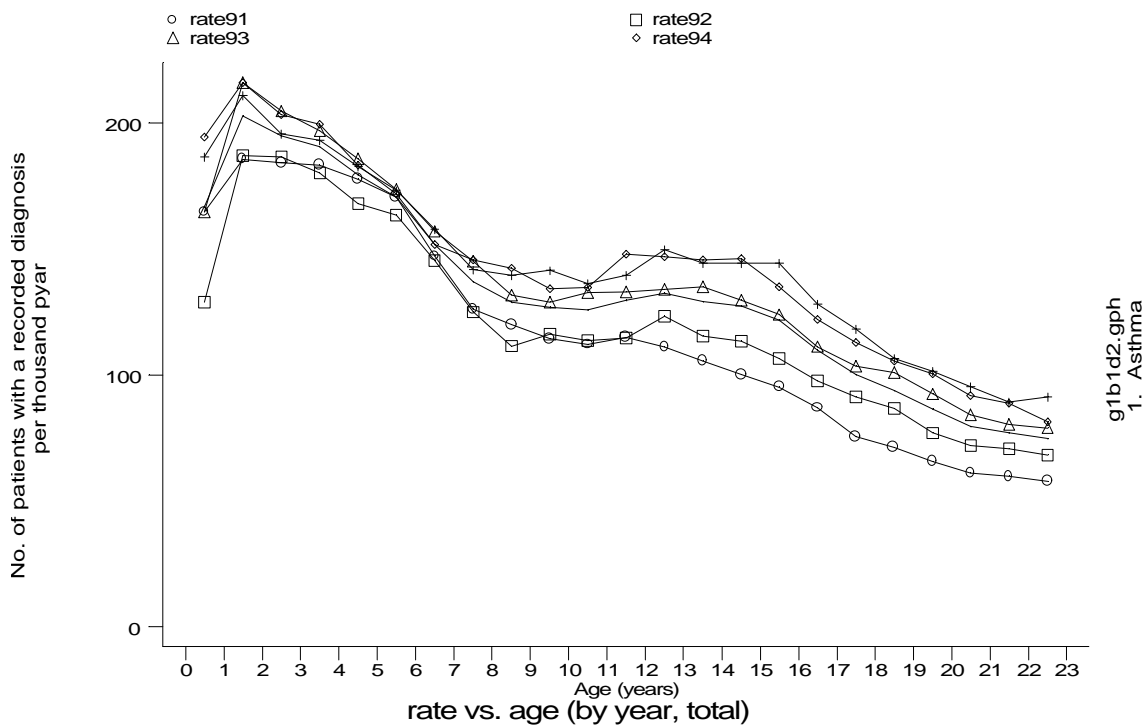
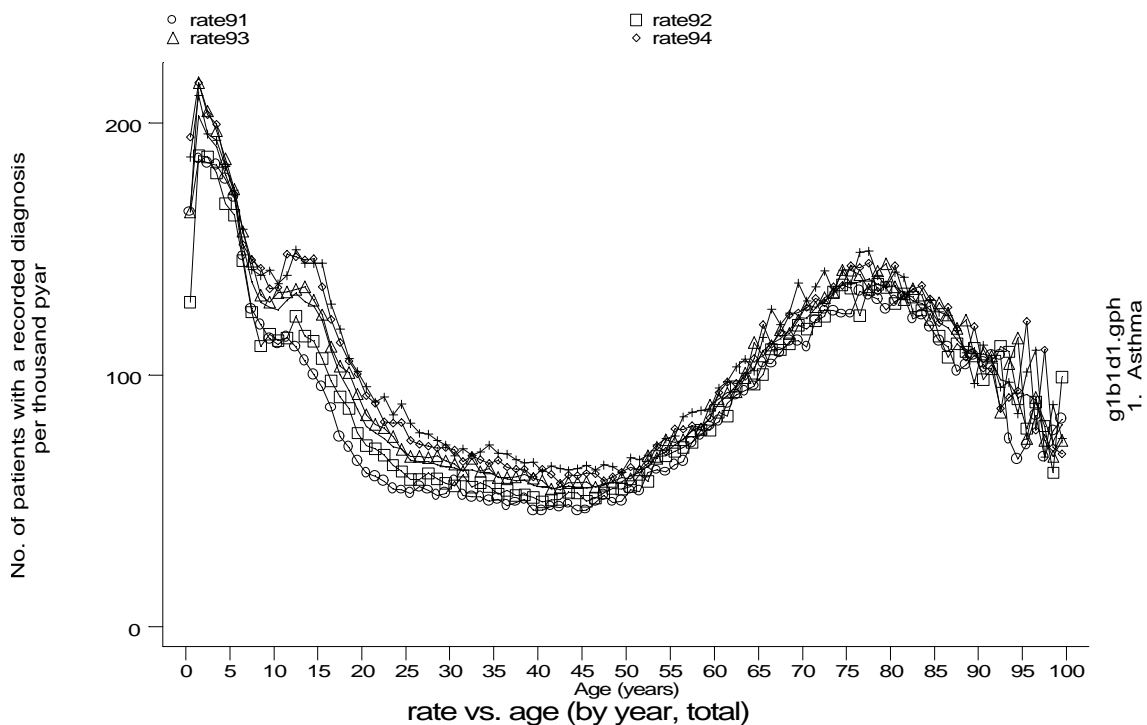
Age-sex distributions, yearly trends and cohort analysis (crude rates)

- GPRD Inhaler prescription only, England 1991-95



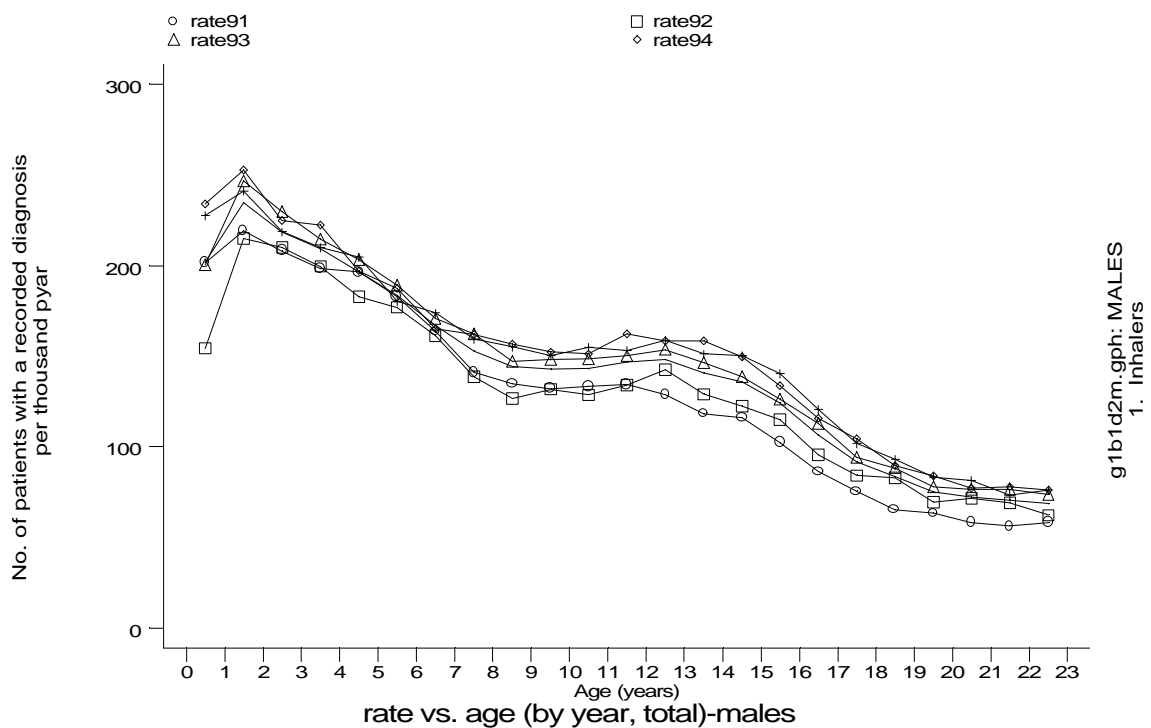
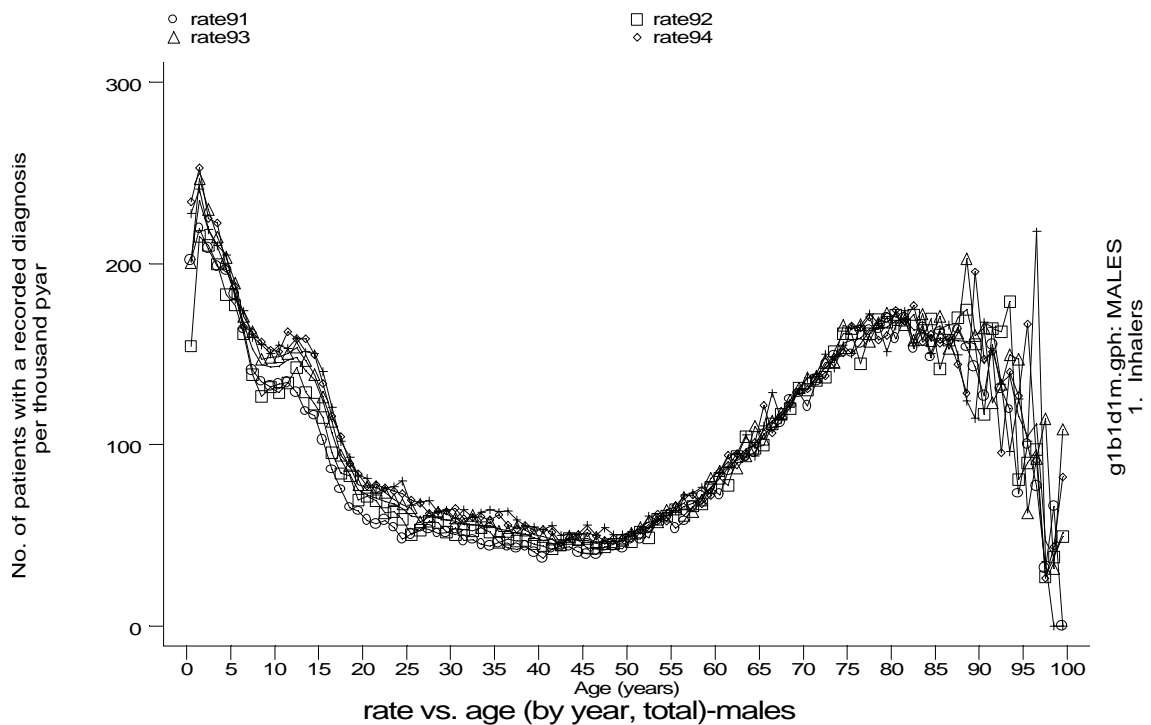
Age-sex distributions, yearly trends and cohort analysis (crude rates)

- GPRD Inhaler prescription only, England 1991-95



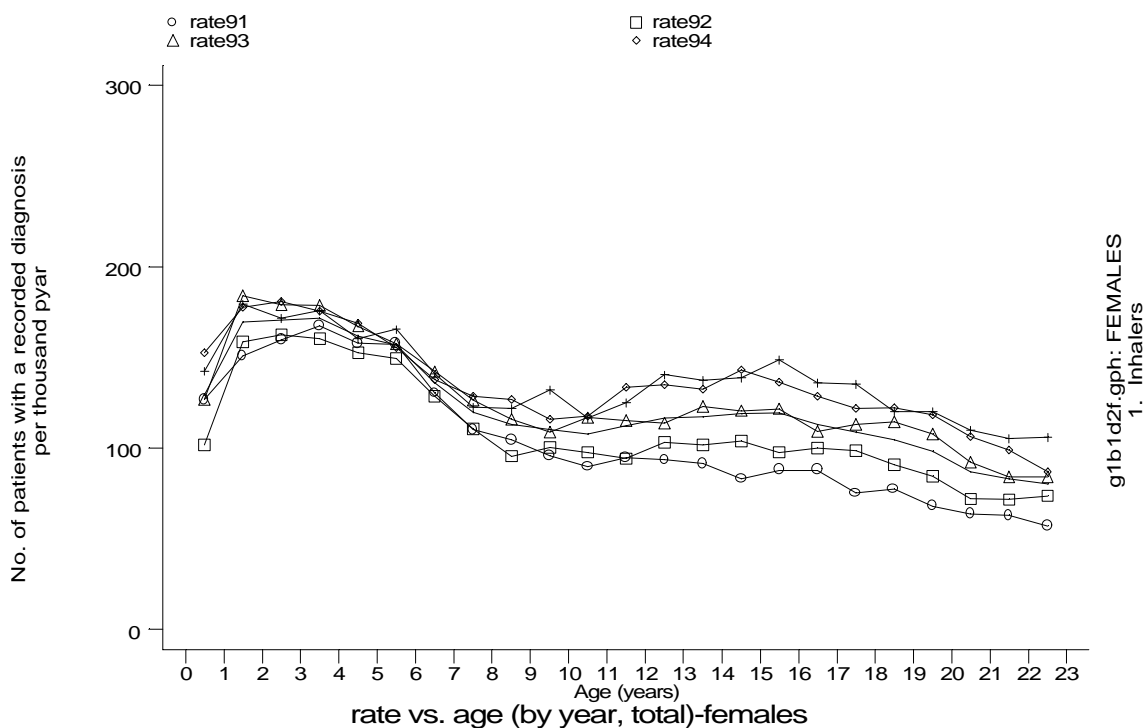
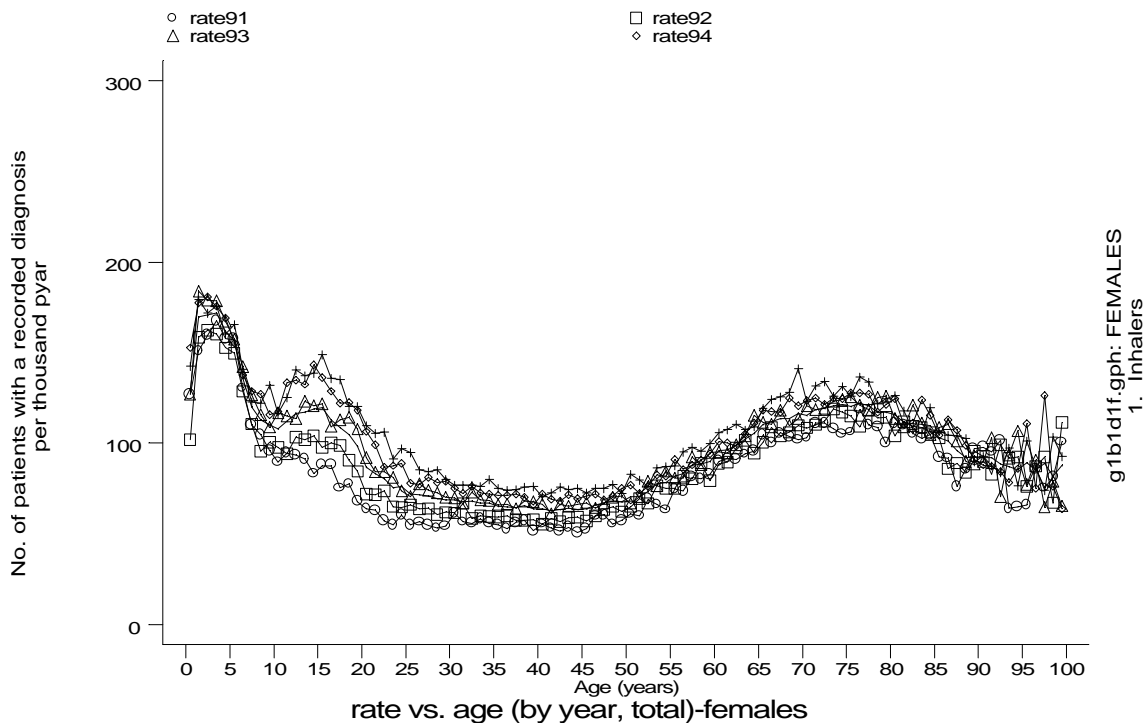
Age-sex distributions, yearly trends and cohort analysis (crude rates)

- GPRD Inhaler prescription only, England 1991-95



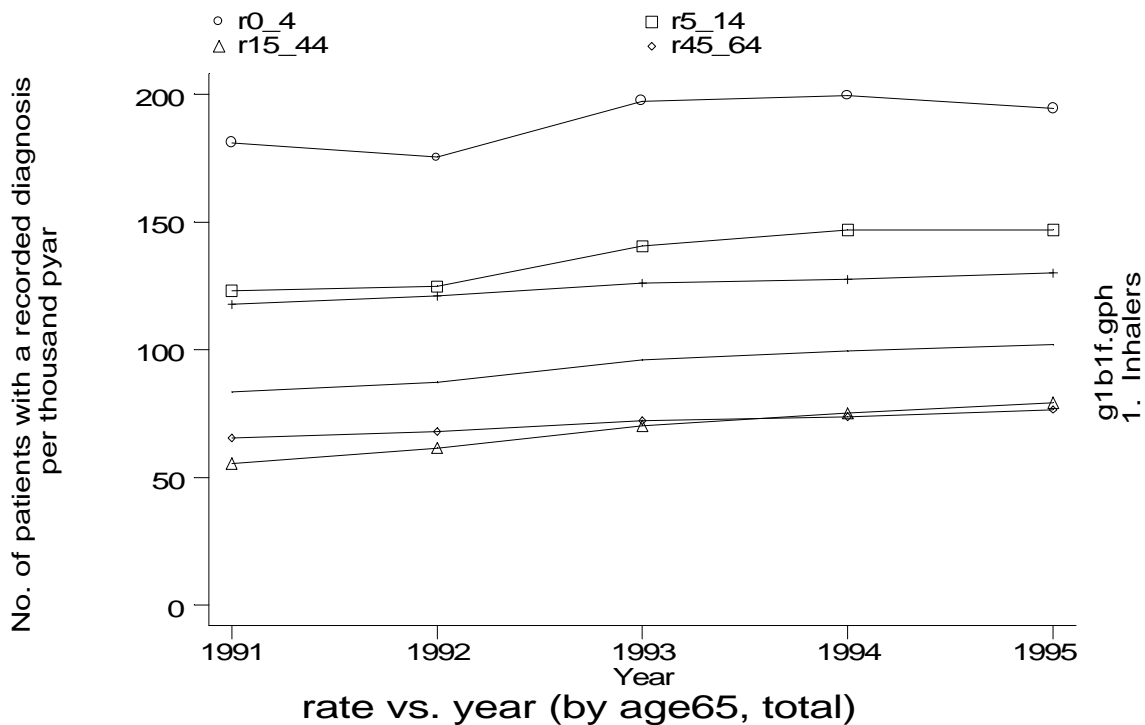
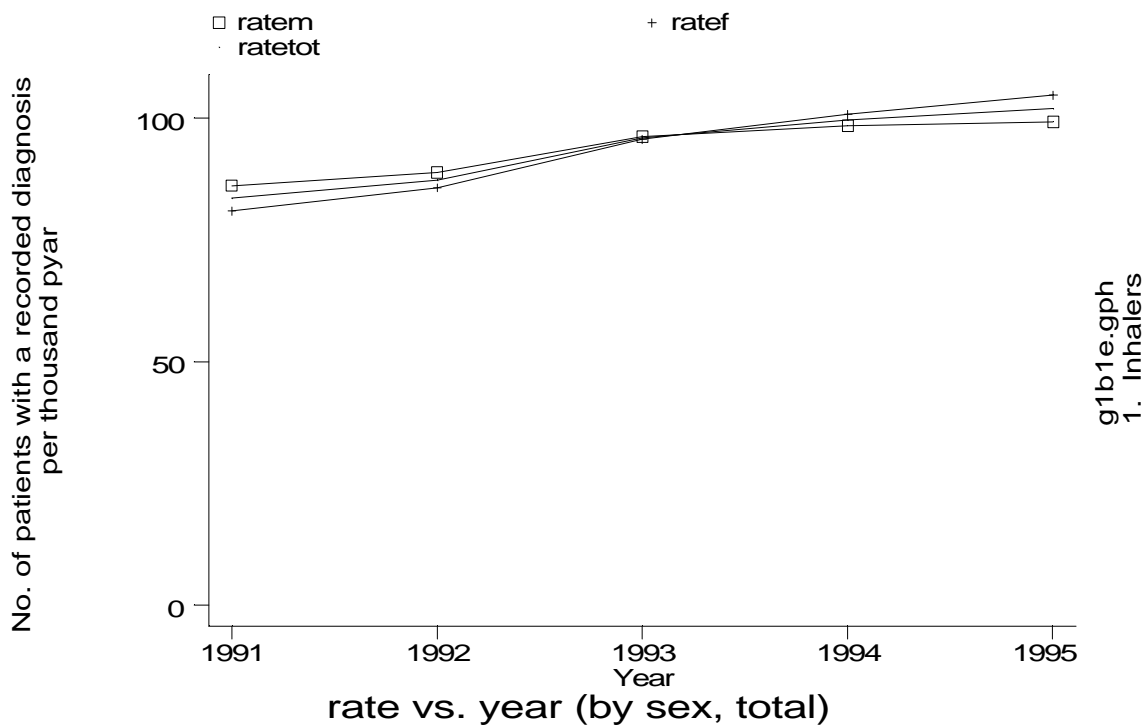
Age-sex distributions, yearly trends and cohort analysis (crude rates)

- GPRD Inhaler prescription only, England 1991-95



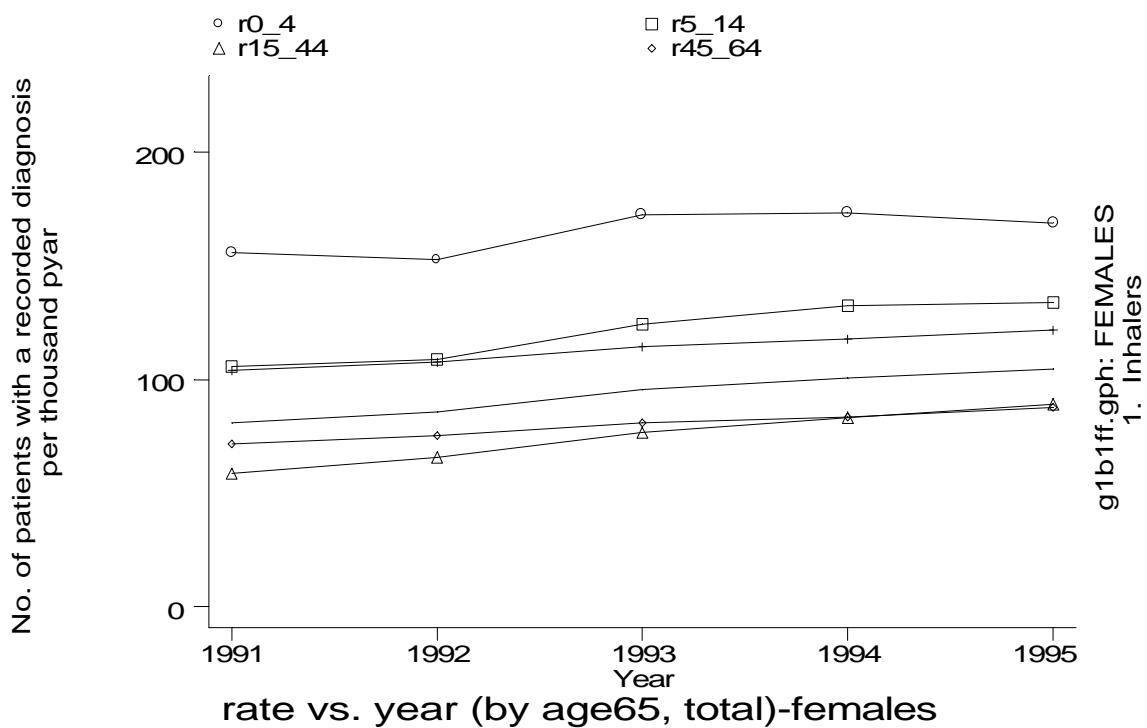
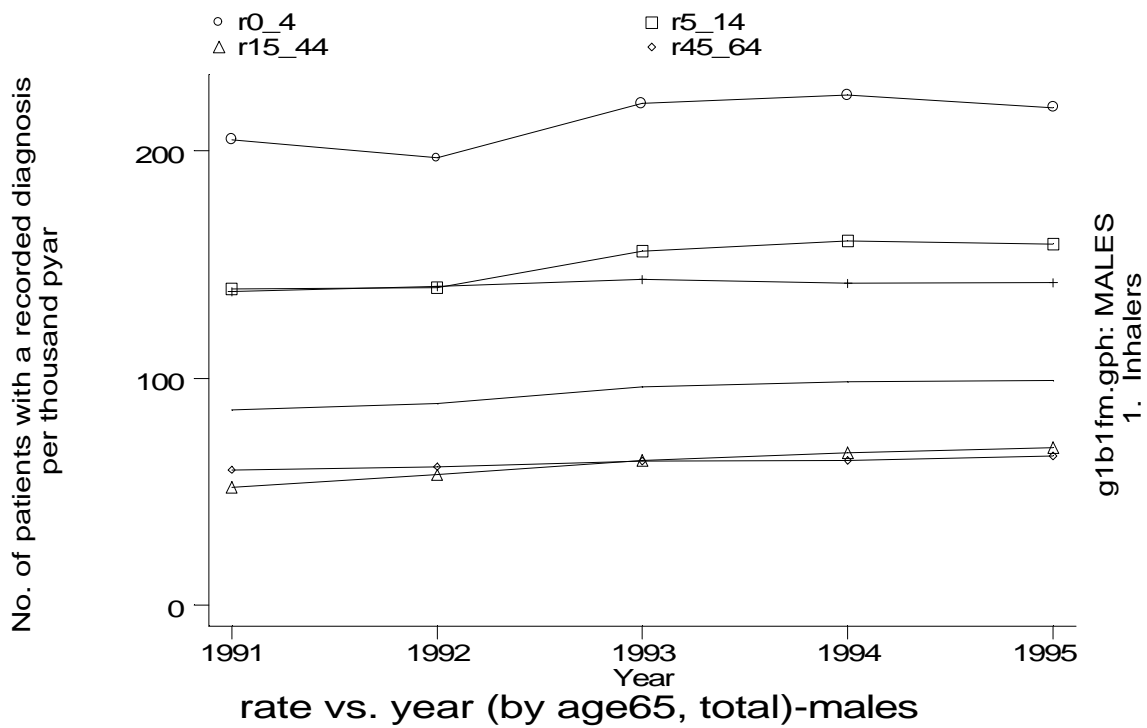
Age-sex distributions, yearly trends and cohort analysis (crude rates)

- GPRD Inhaler prescription only, England 1991-95



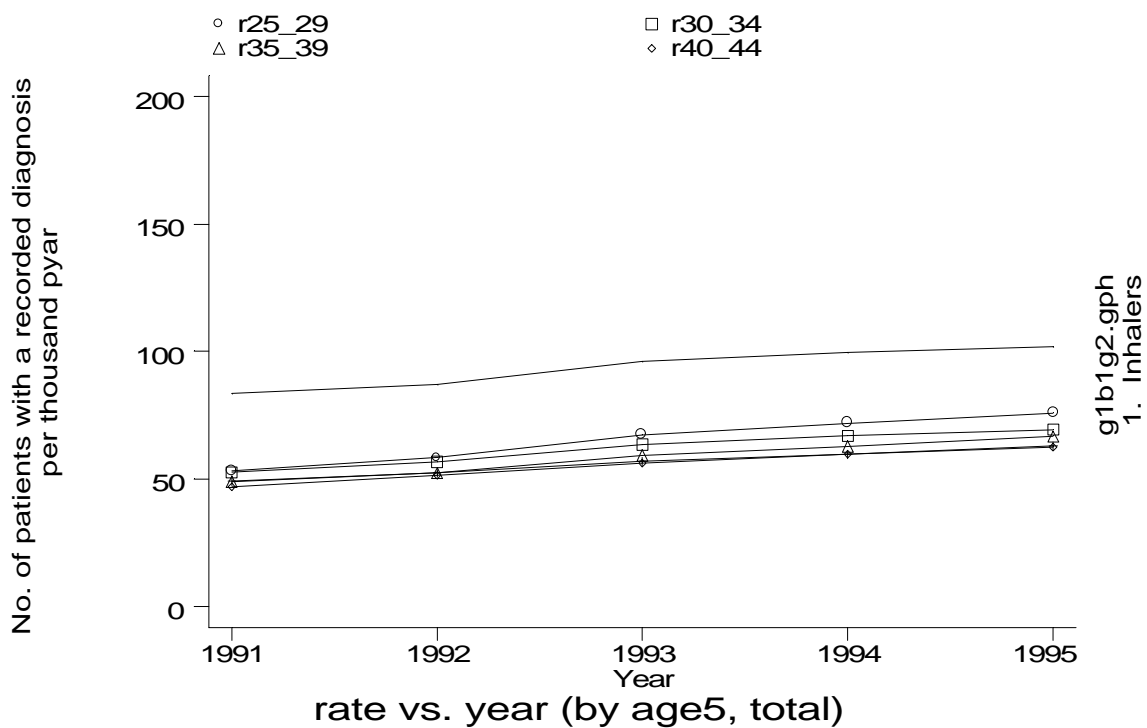
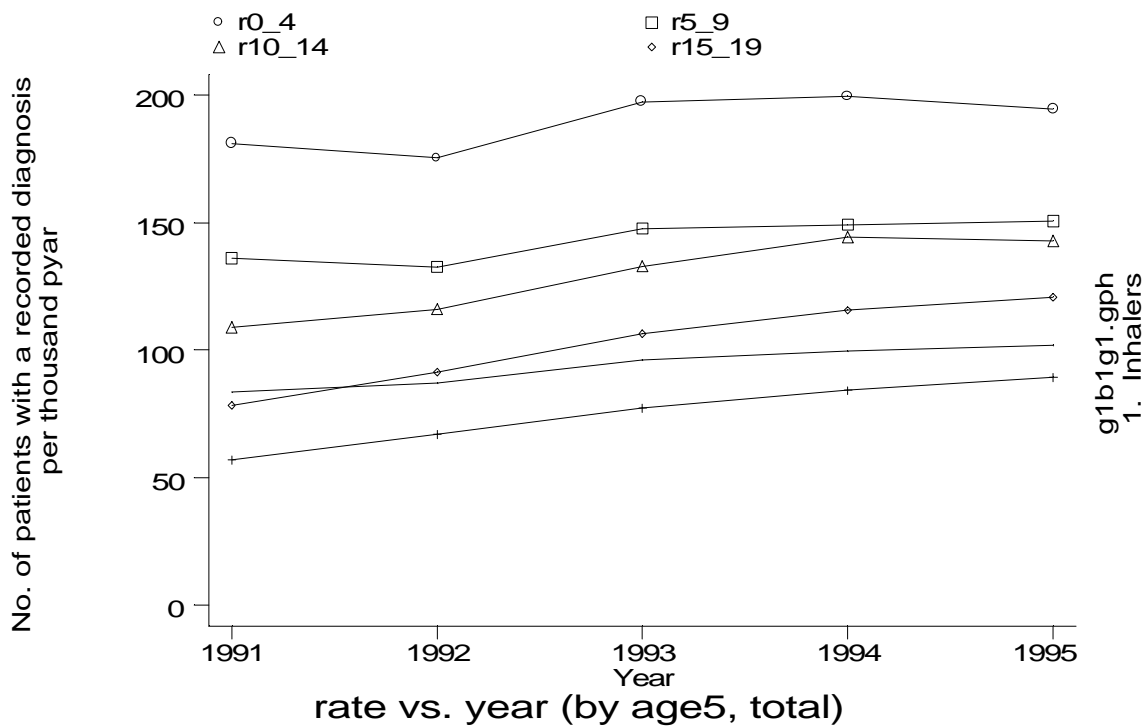
Age-sex distributions, yearly trends and cohort analysis (crude rates)

- GPRD Inhaler prescription only, England 1991-95



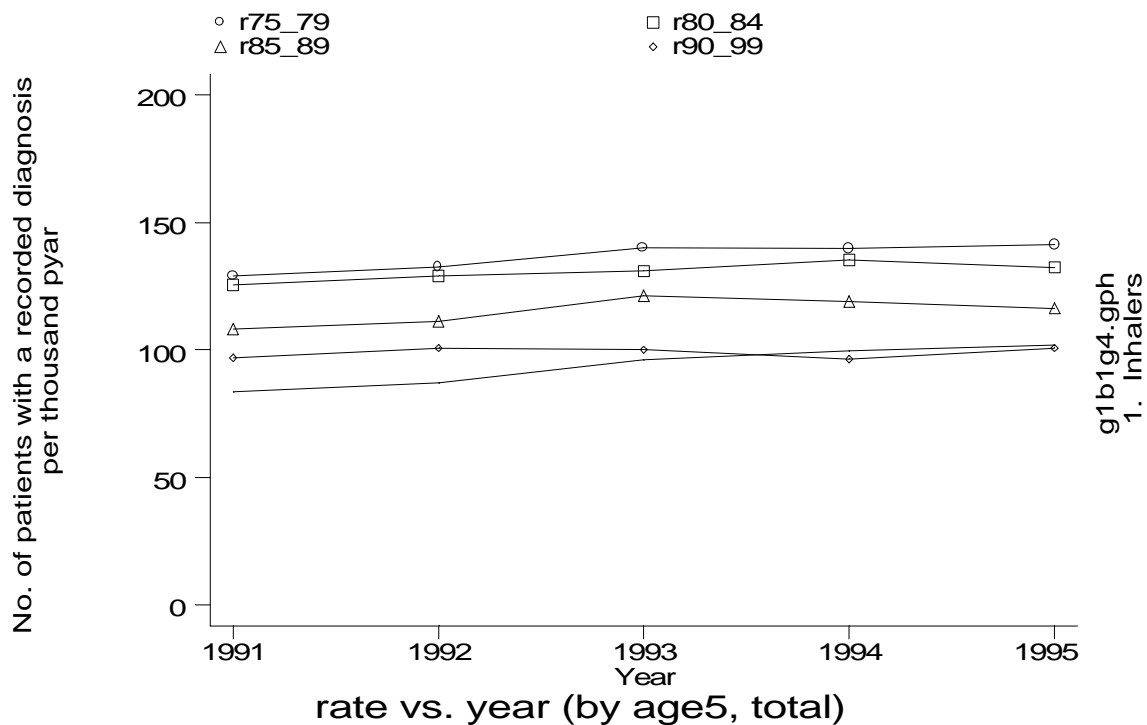
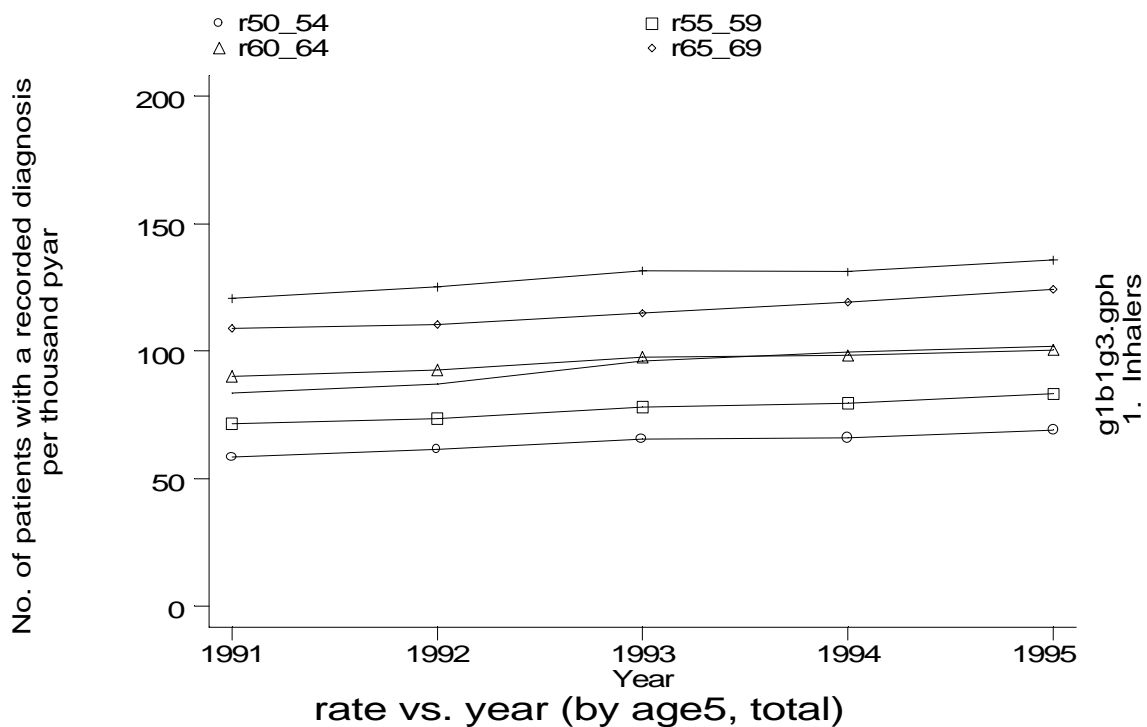
Age-sex distributions, yearly trends and cohort analysis (crude rates)

- GPRD Inhaler prescription only, England 1991-95



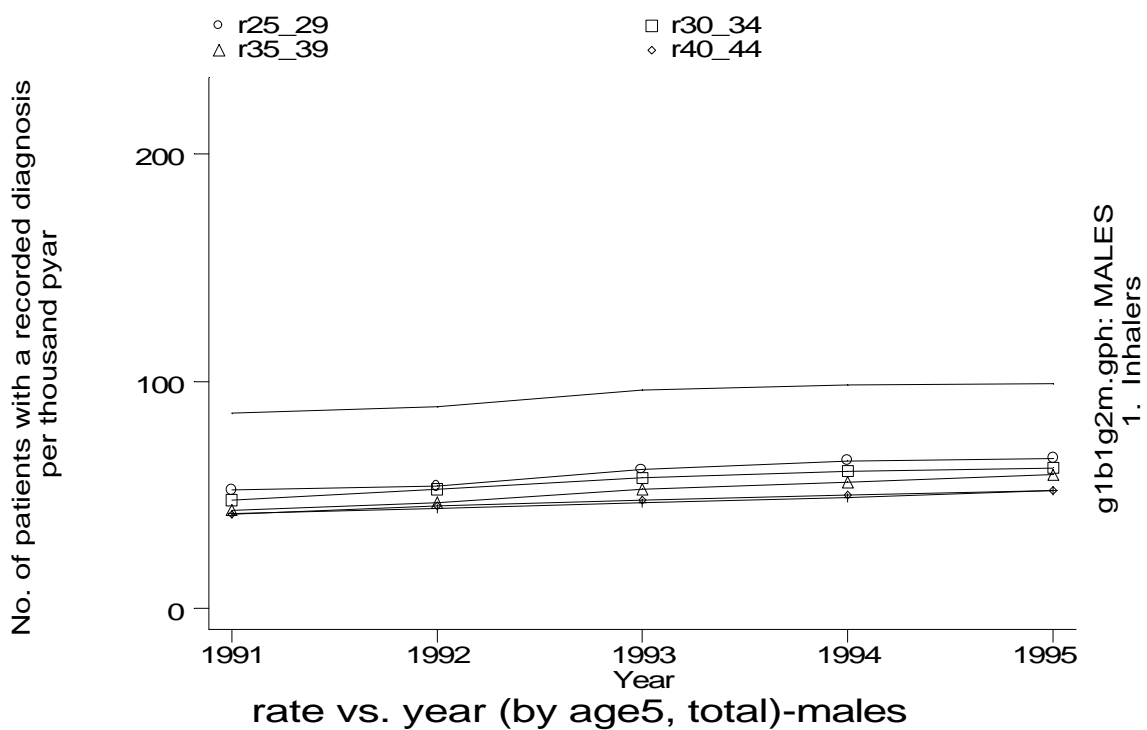
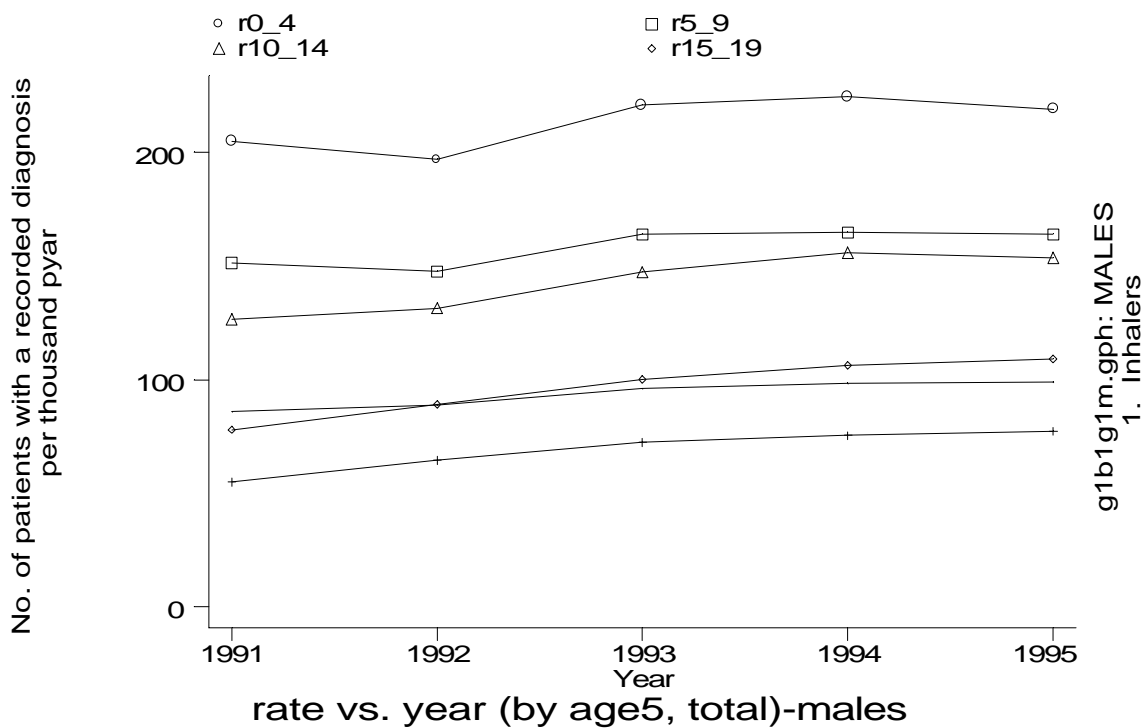
Age-sex distributions, yearly trends and cohort analysis (crude rates)

- GPRD Inhaler prescription only, England 1991-95



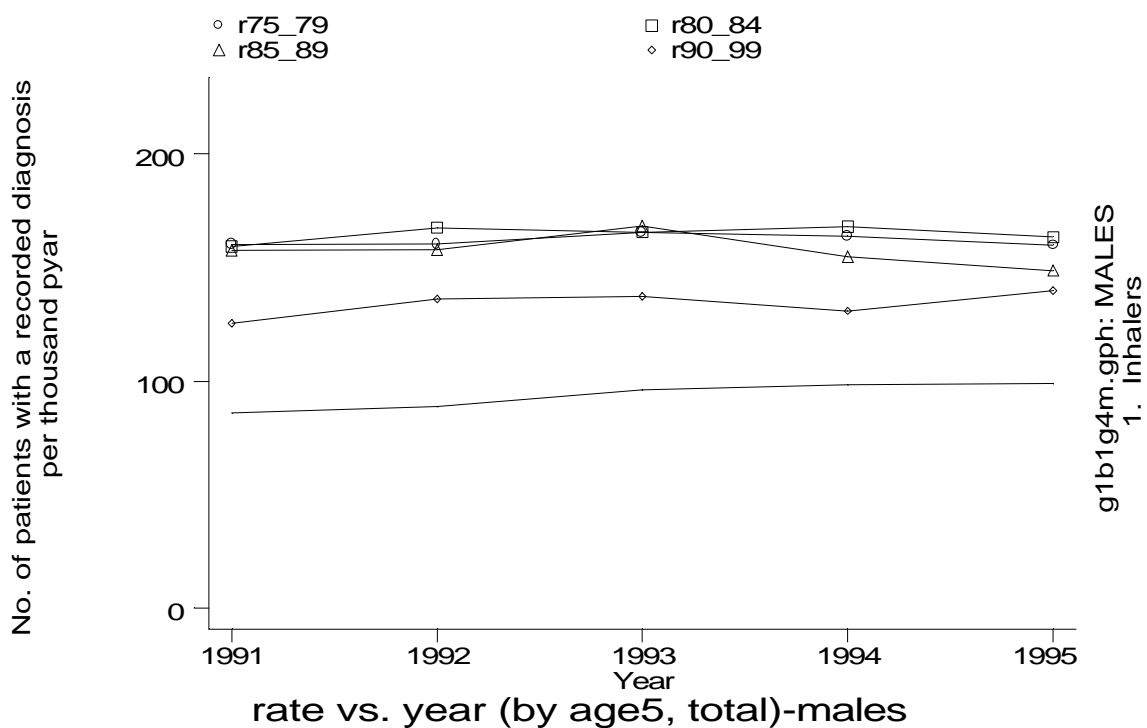
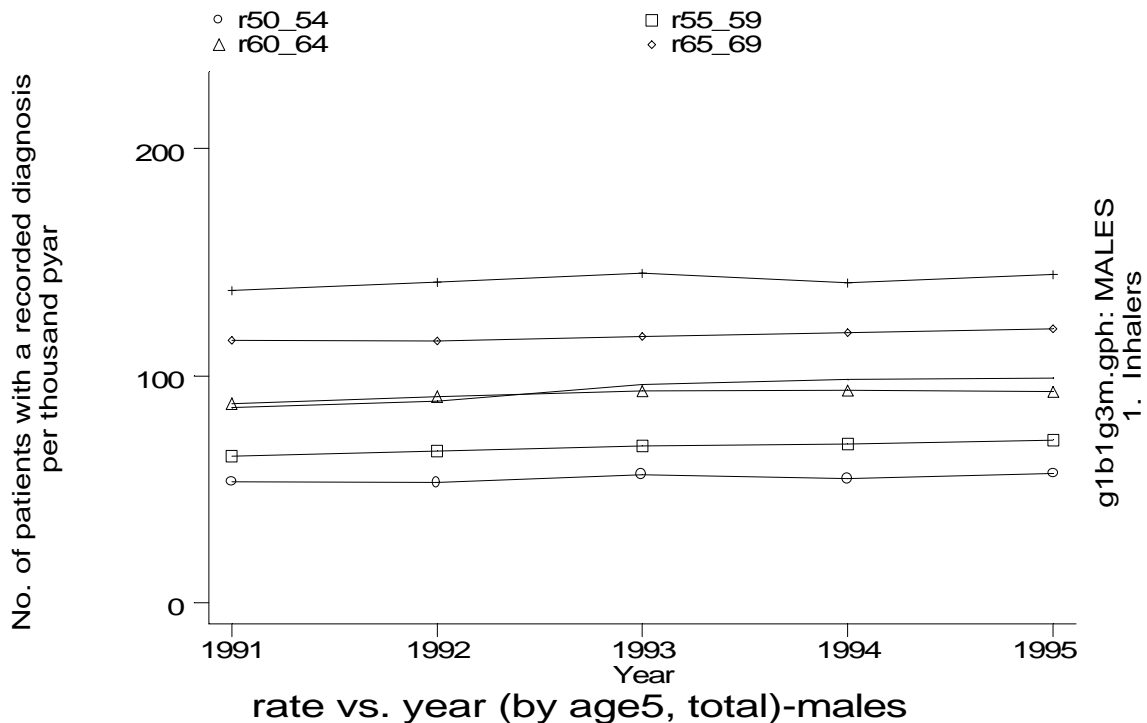
Age-sex distributions, yearly trends and cohort analysis (crude rates)

- GPRD Inhaler prescription only, England 1991-95



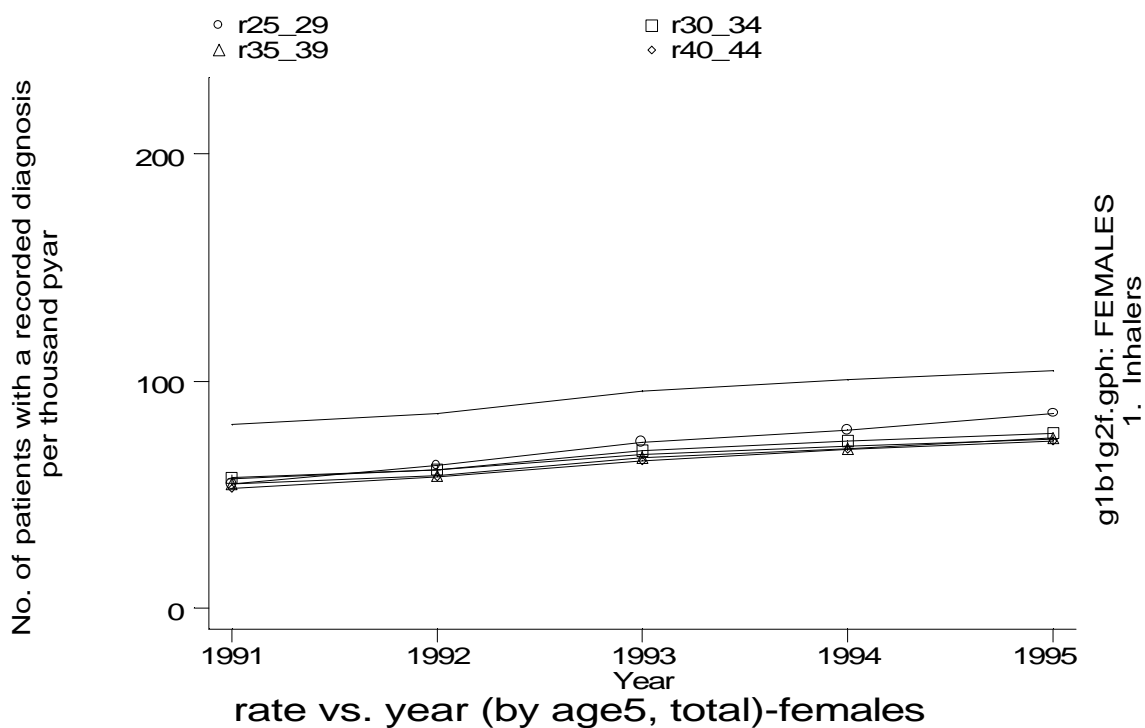
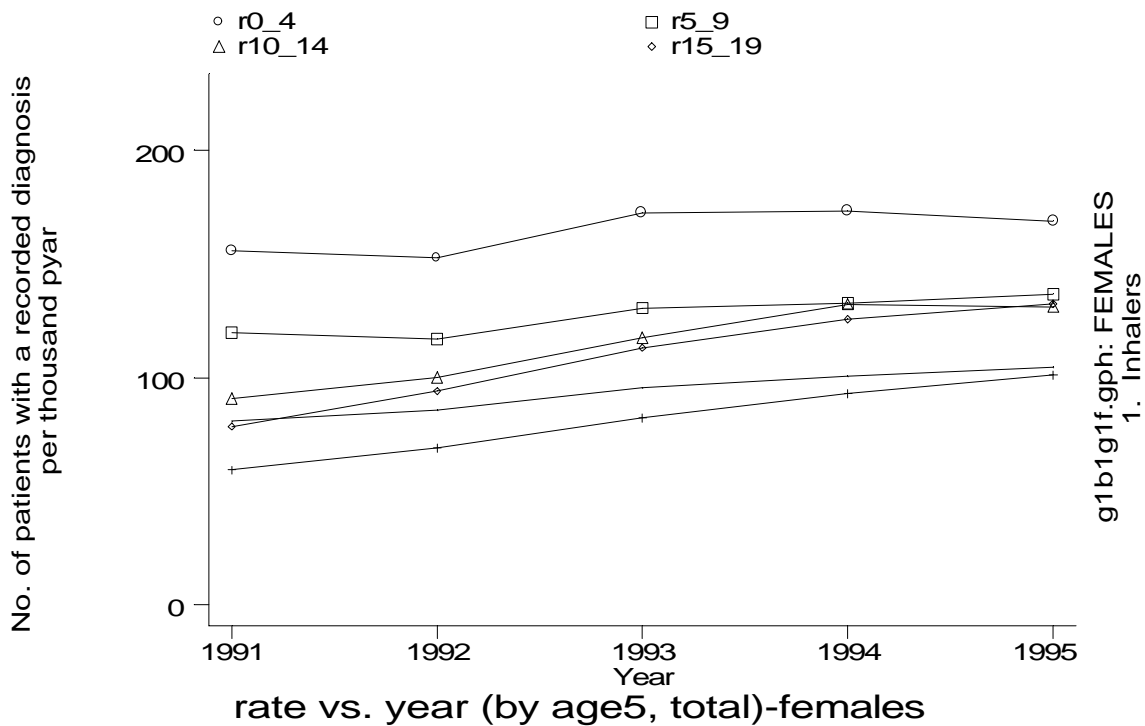
Age-sex distributions, yearly trends and cohort analysis (crude rates)

- GPRD Inhaler prescription only, England 1991-95



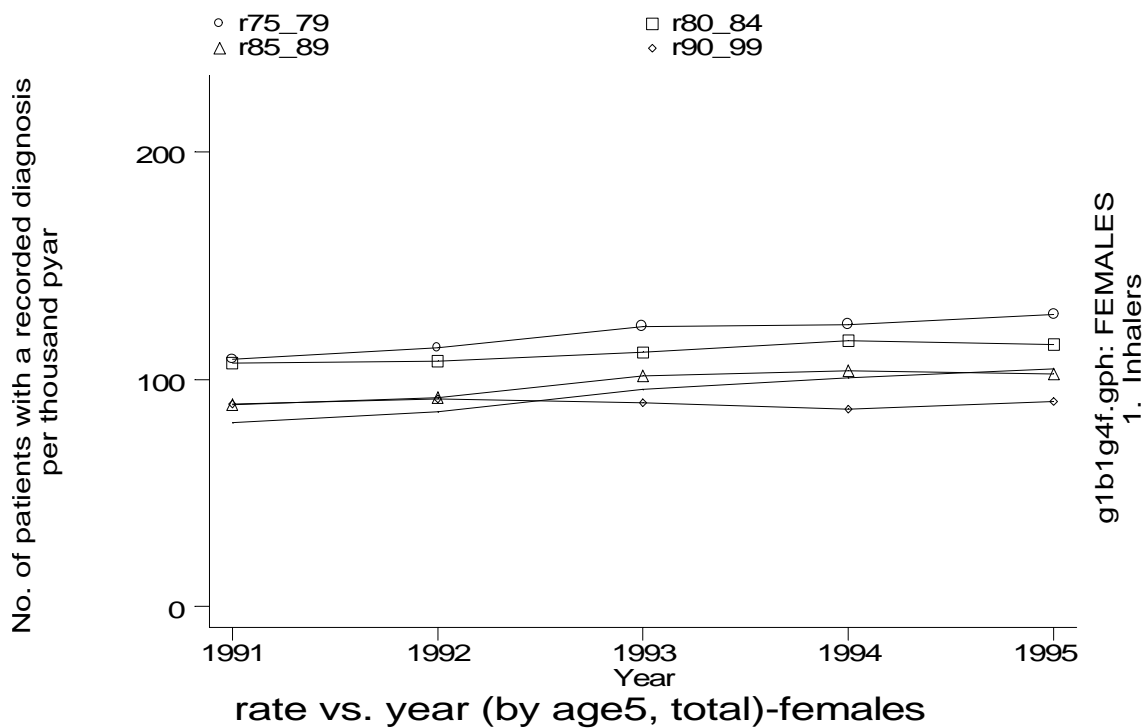
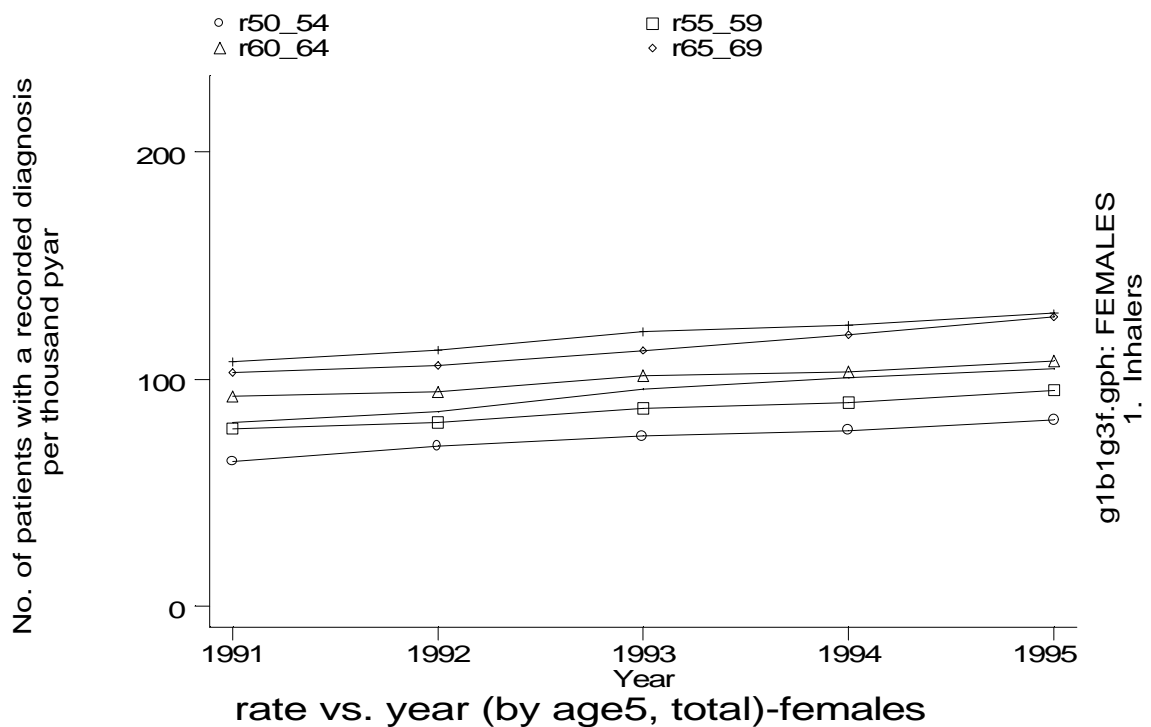
Age-sex distributions, yearly trends and cohort analysis (crude rates)

- GPRD Inhaler prescription only, England 1991-95



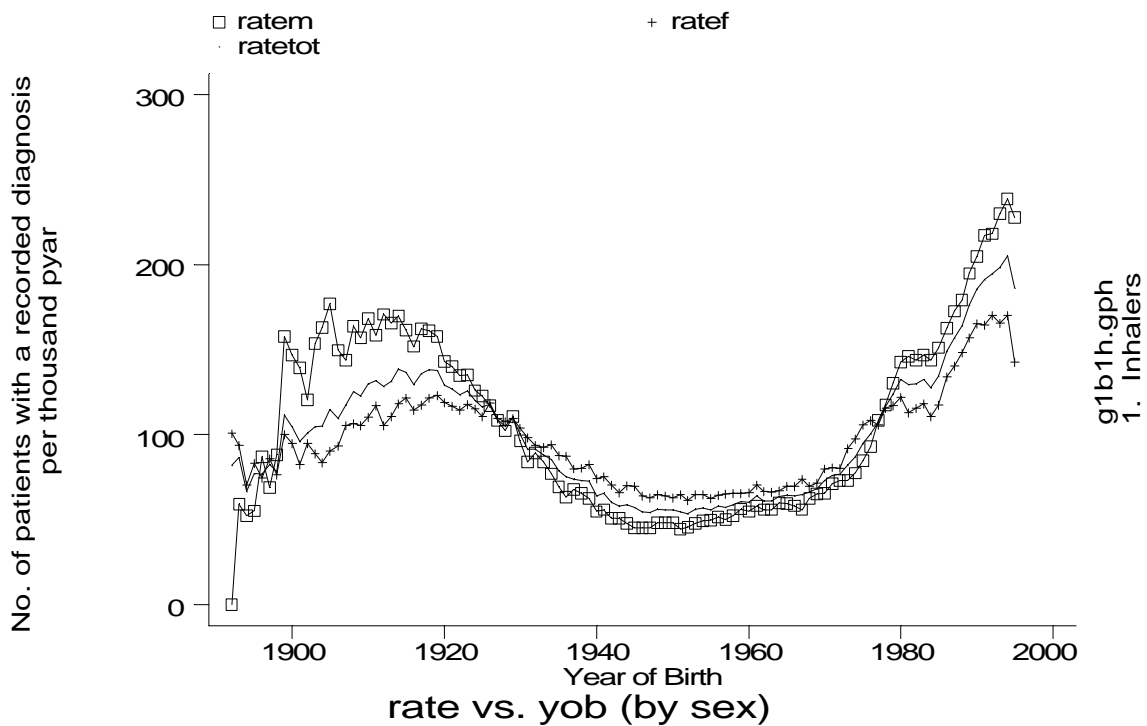
Age-sex distributions, yearly trends and cohort analysis (crude rates)

- GPRD Inhaler prescription only, England 1991-95



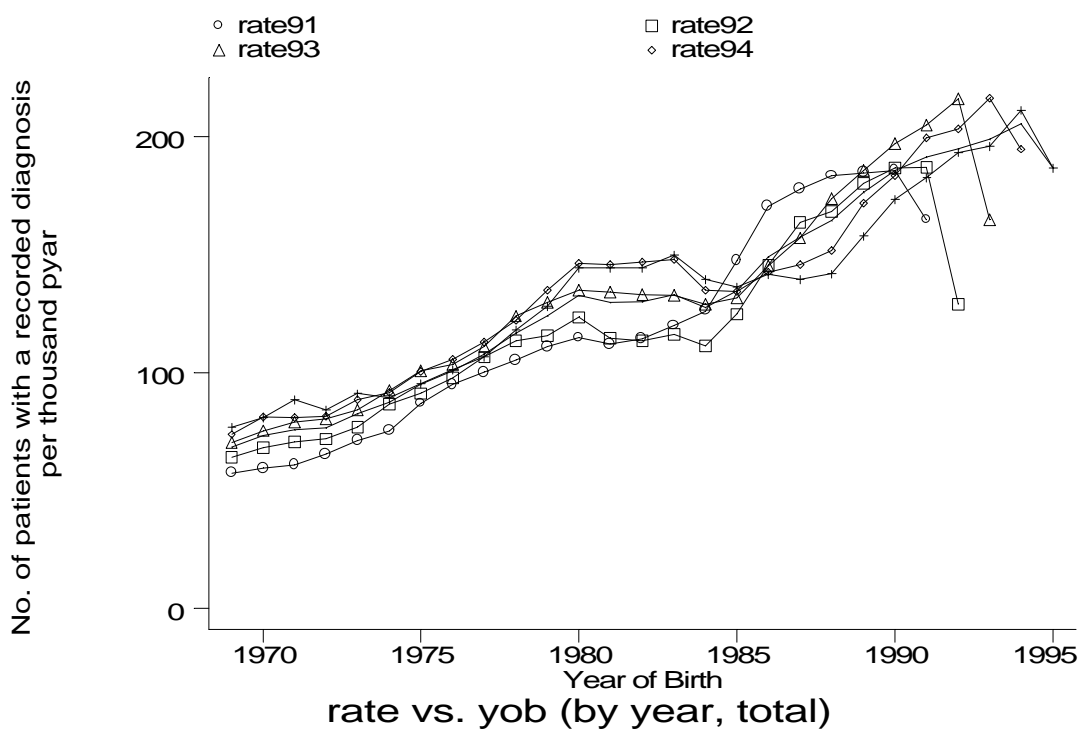
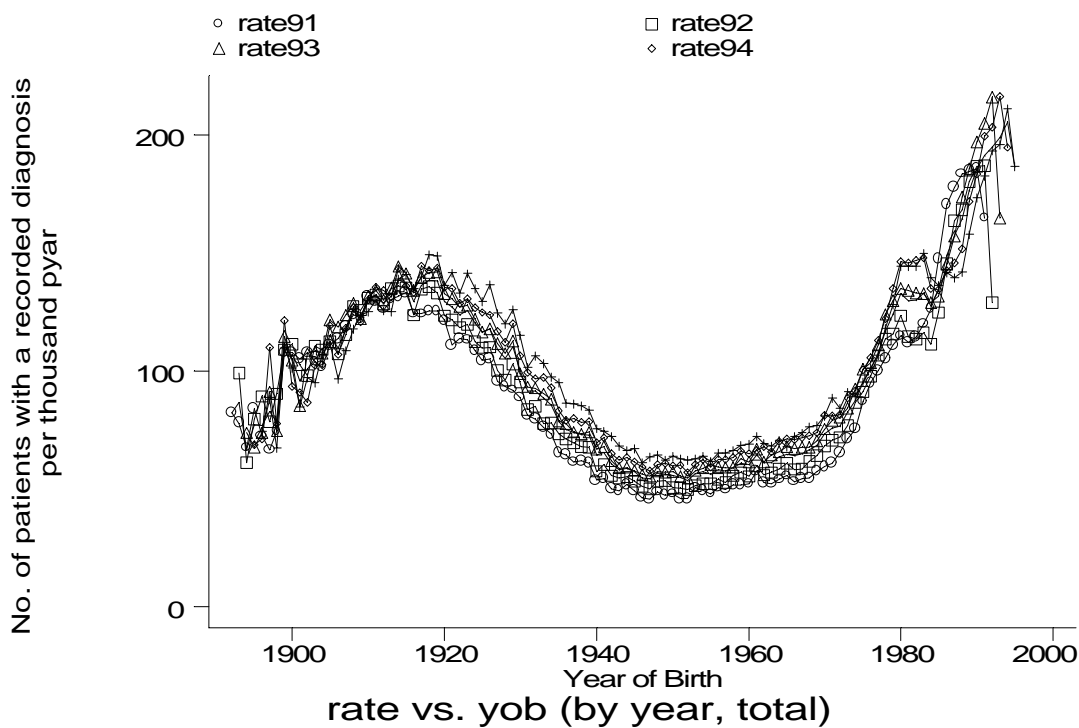
Age-sex distributions, yearly trends and cohort analysis (crude rates)

- GPRD Inhaler prescription only, England 1991-95



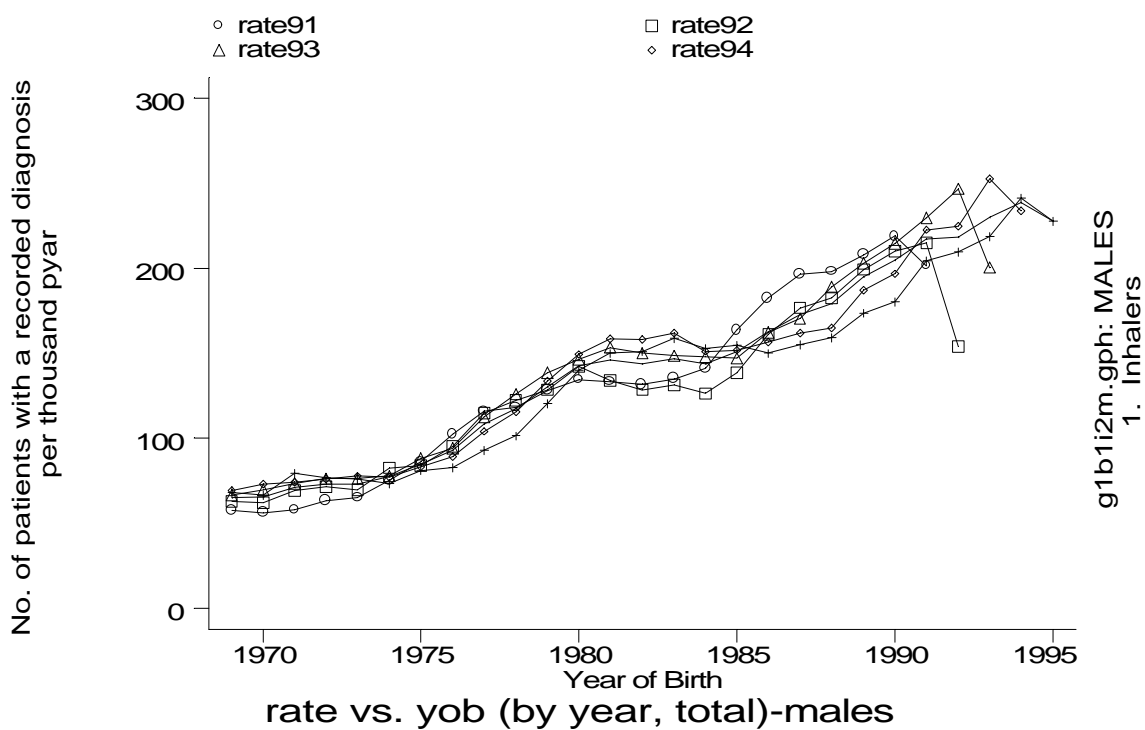
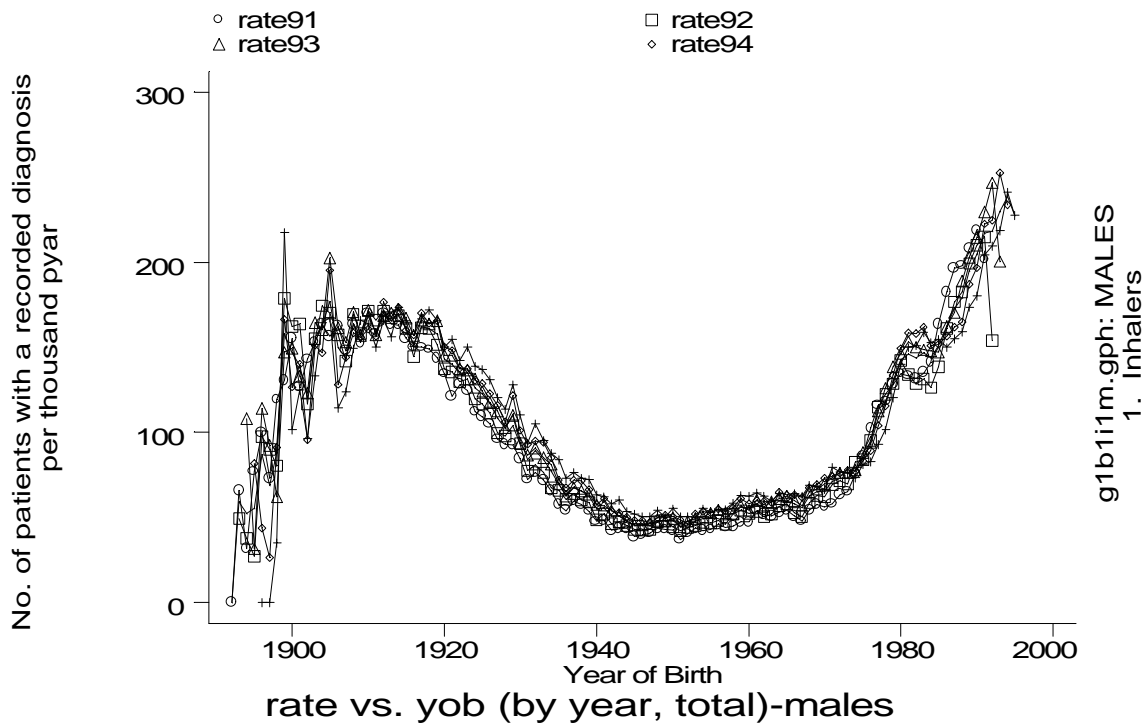
Age-sex distributions, yearly trends and cohort analysis (crude rates)

- GPRD Inhaler prescription only, England 1991-95



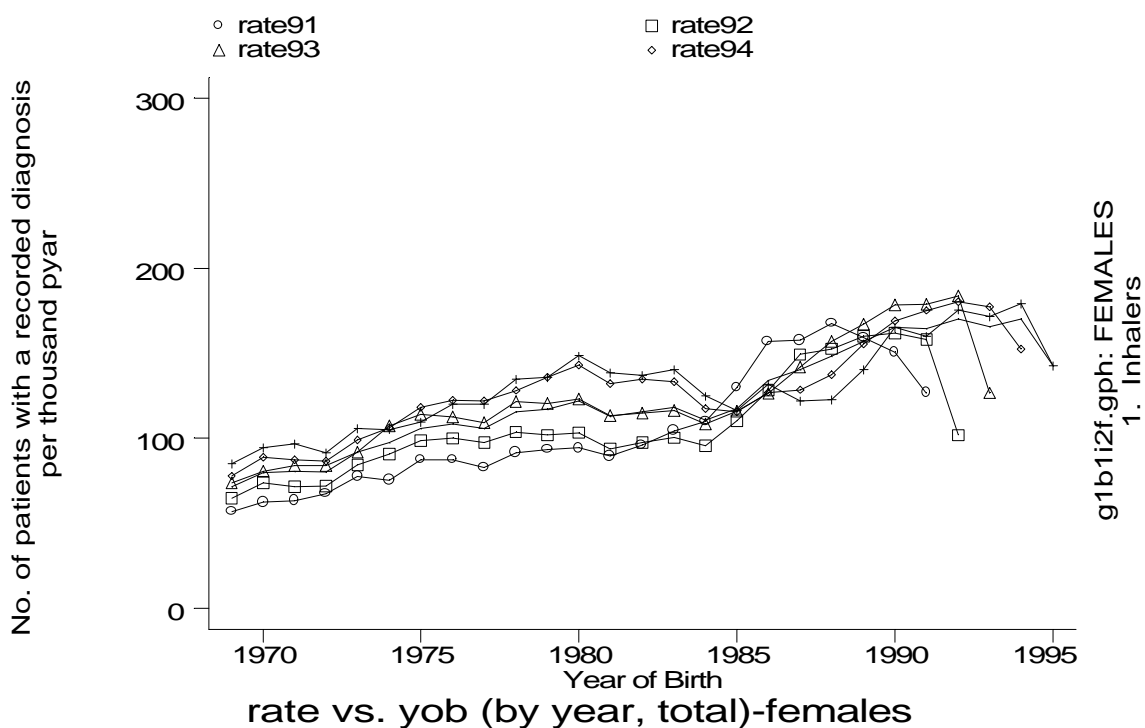
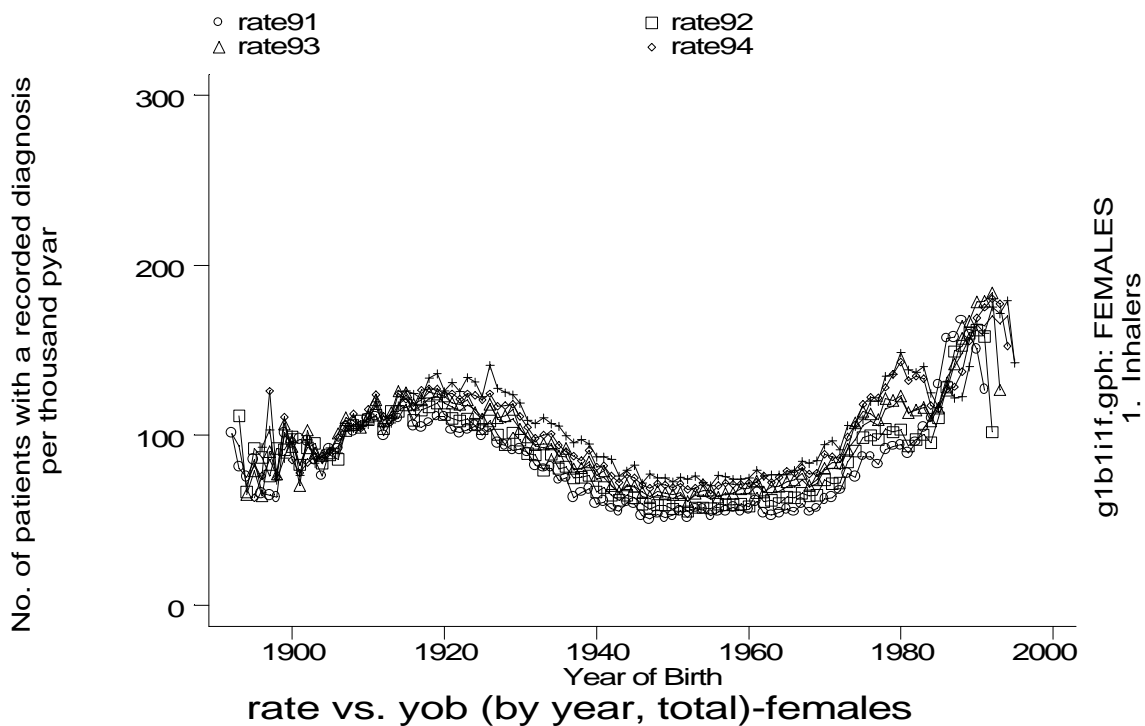
Age-sex distributions, yearly trends and cohort analysis (crude rates)

- GPRD Inhaler prescription only, England 1991-95



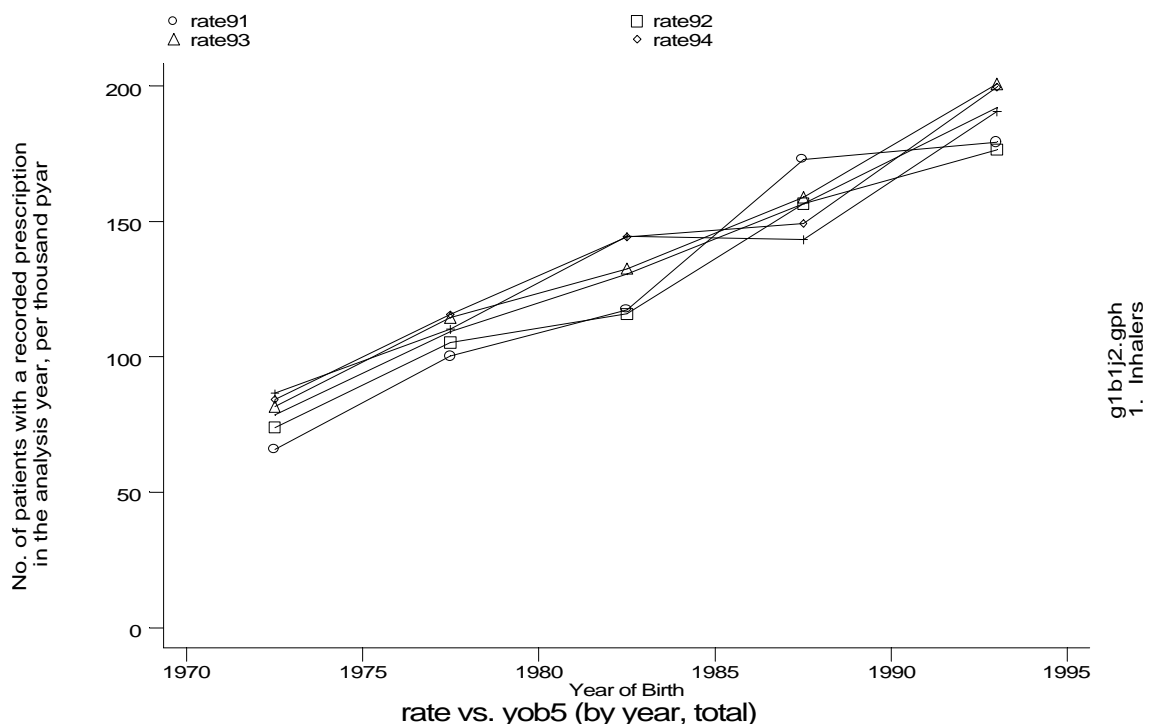
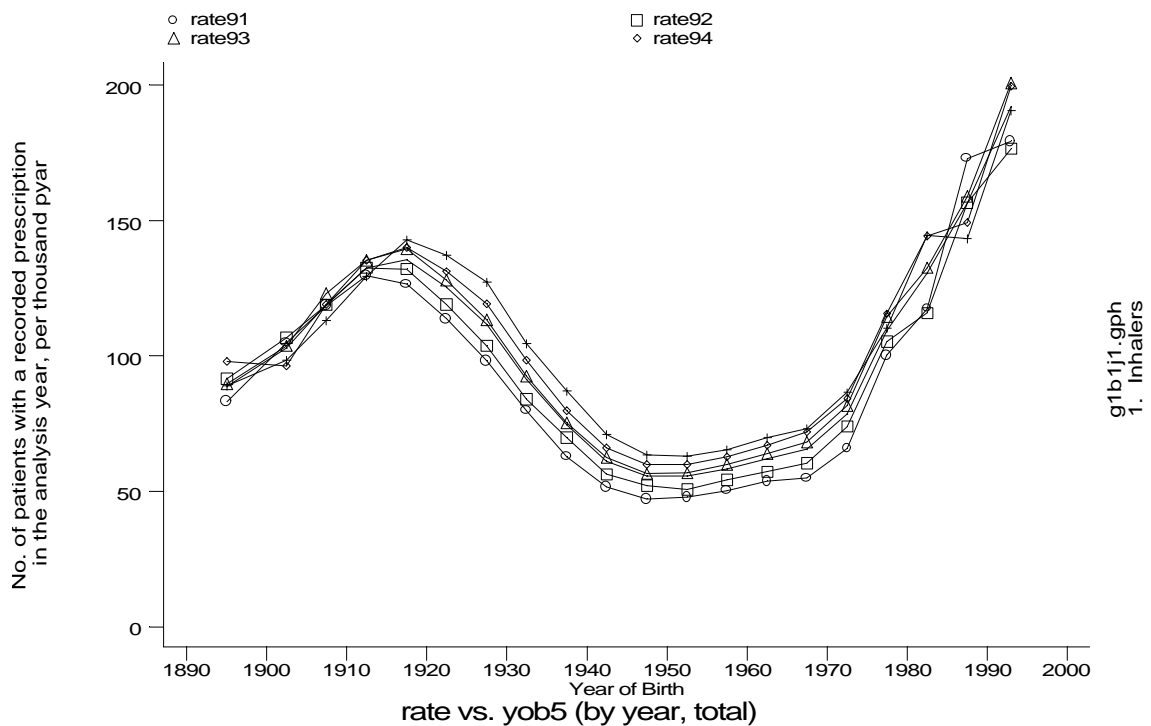
Age-sex distributions, yearly trends and cohort analysis (crude rates)

- GPRD Inhaler prescription only, England 1991-95



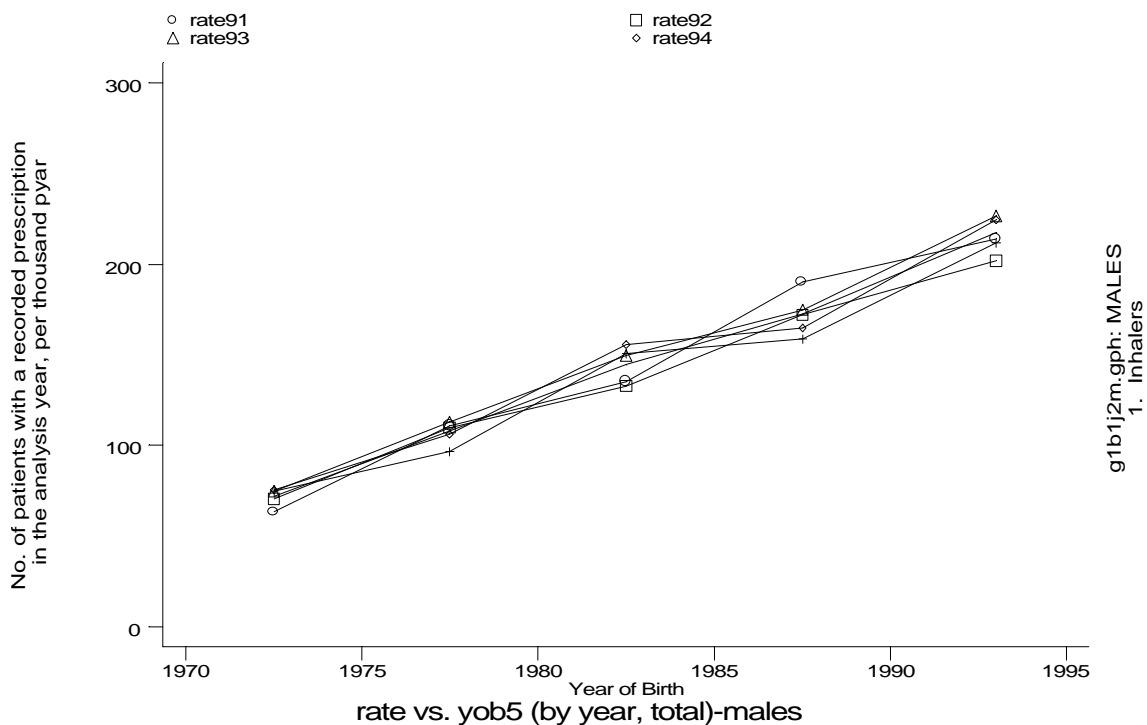
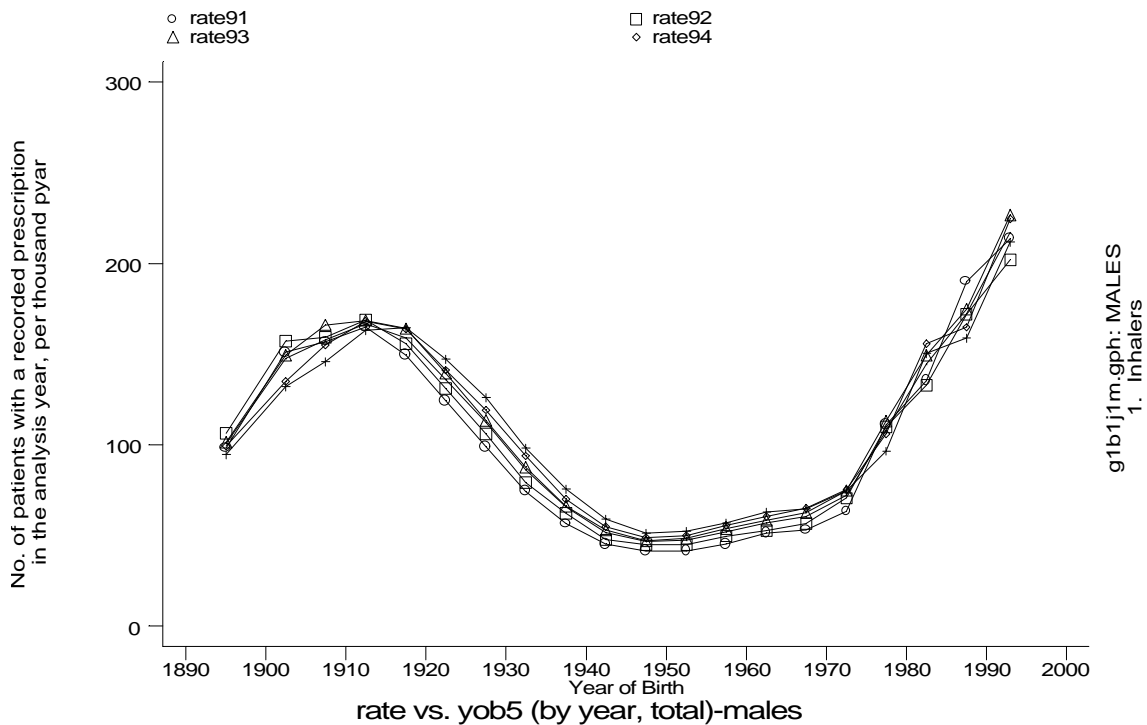
Age-sex distributions, yearly trends and cohort analysis (crude rates)

- GPRD Inhaler prescription only, England 1991-95



Age-sex distributions, yearly trends and cohort analysis (crude rates)

- GPRD Inhaler prescription only, England 1991-95



Age-sex distributions, yearly trends and cohort analysis (crude rates)

- GPRD Inhaler prescription only, England 1991-95

