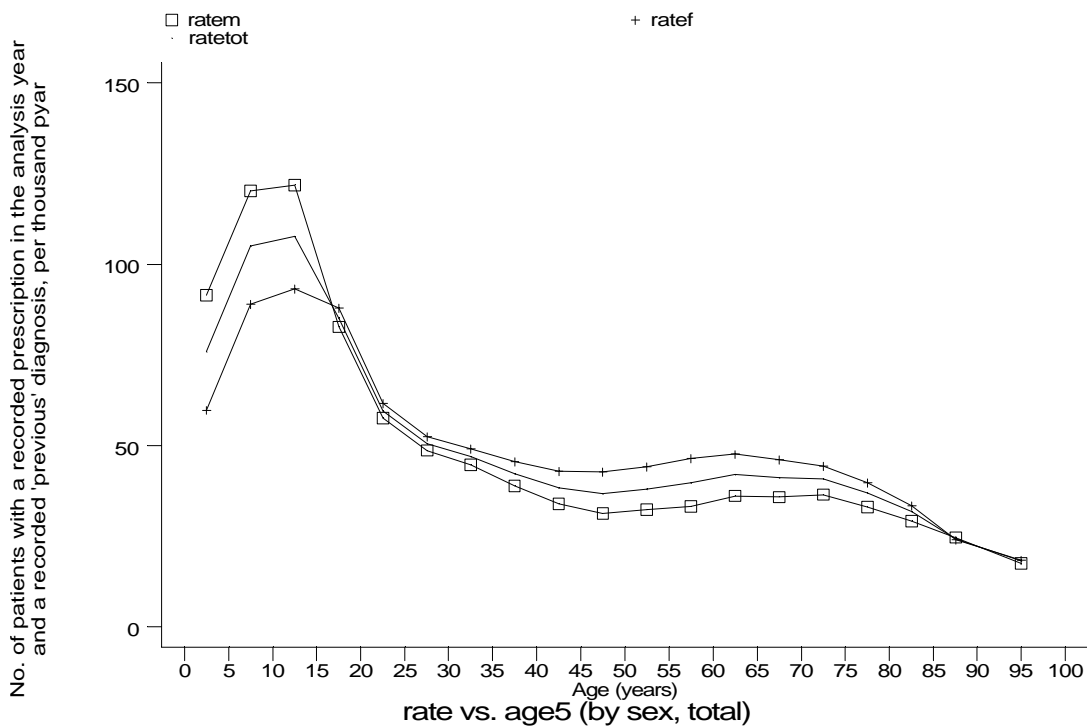
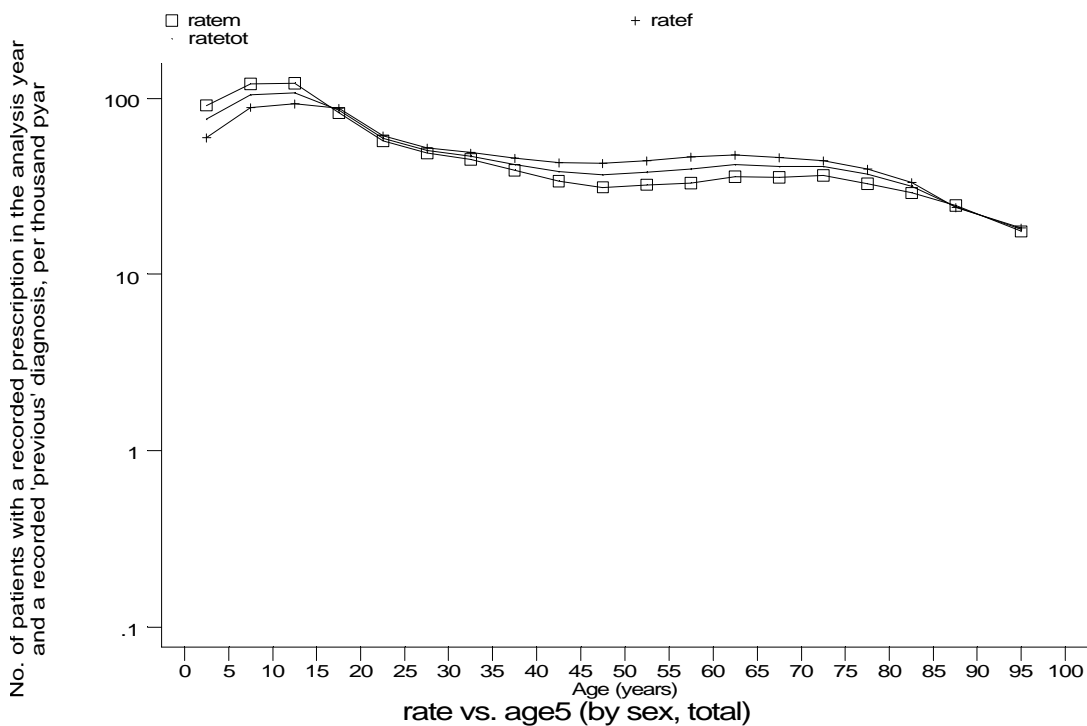


Age-sex distributions, yearly trends and cohort analysis (crude rates)

- GPRD Inhaler prescription and diagnosis of asthma, not COPD, England 1991-95



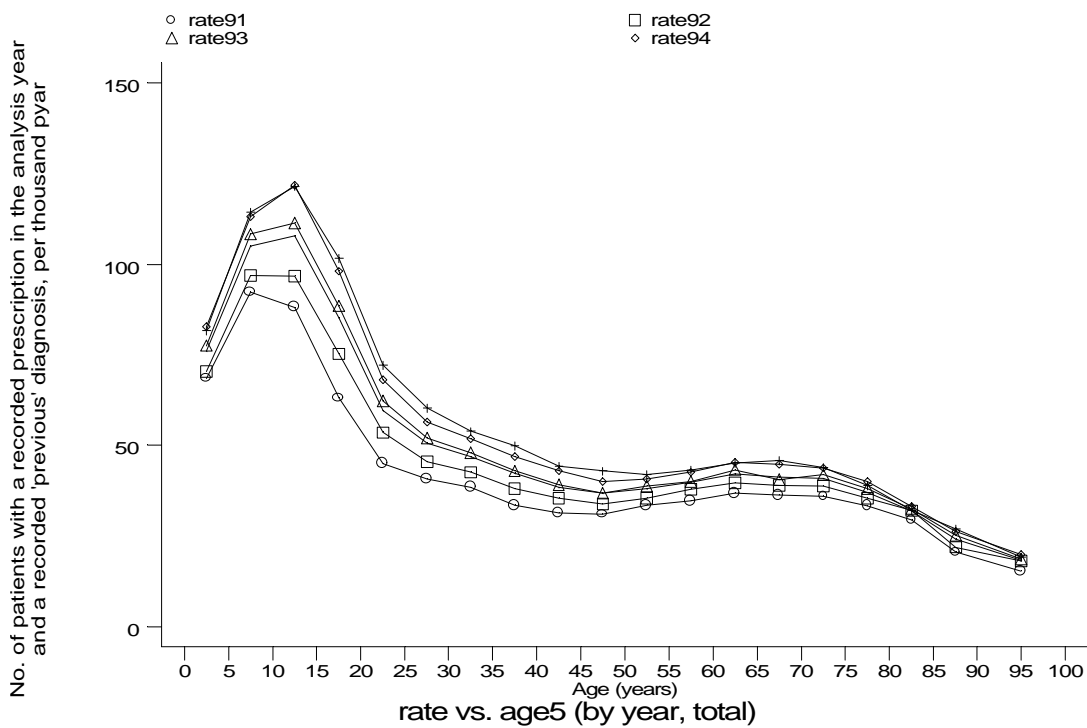
g1c8a1.gph
8. 'Inhalers' + 'previous' diag of AS, not COPD



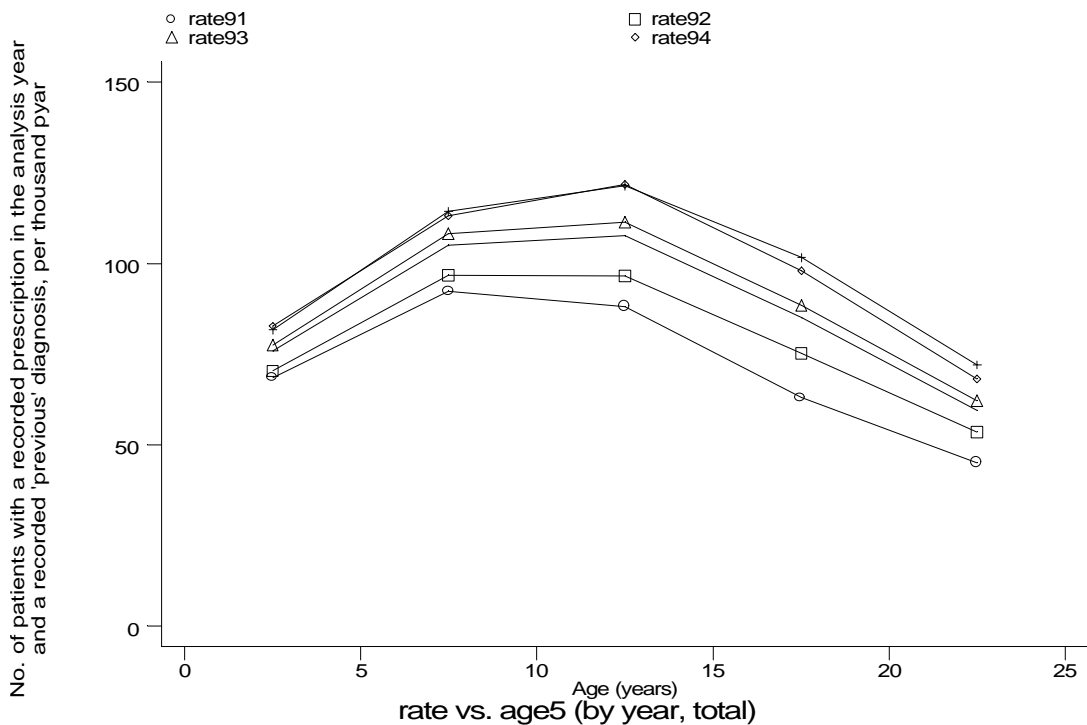
g1c8a2.gph
8. 'Inhalers' + 'previous' diag of AS, not COPD

Age-sex distributions, yearly trends and cohort analysis (crude rates)

- GPRD Inhaler prescription and diagnosis of asthma, not COPD, England 1991-95



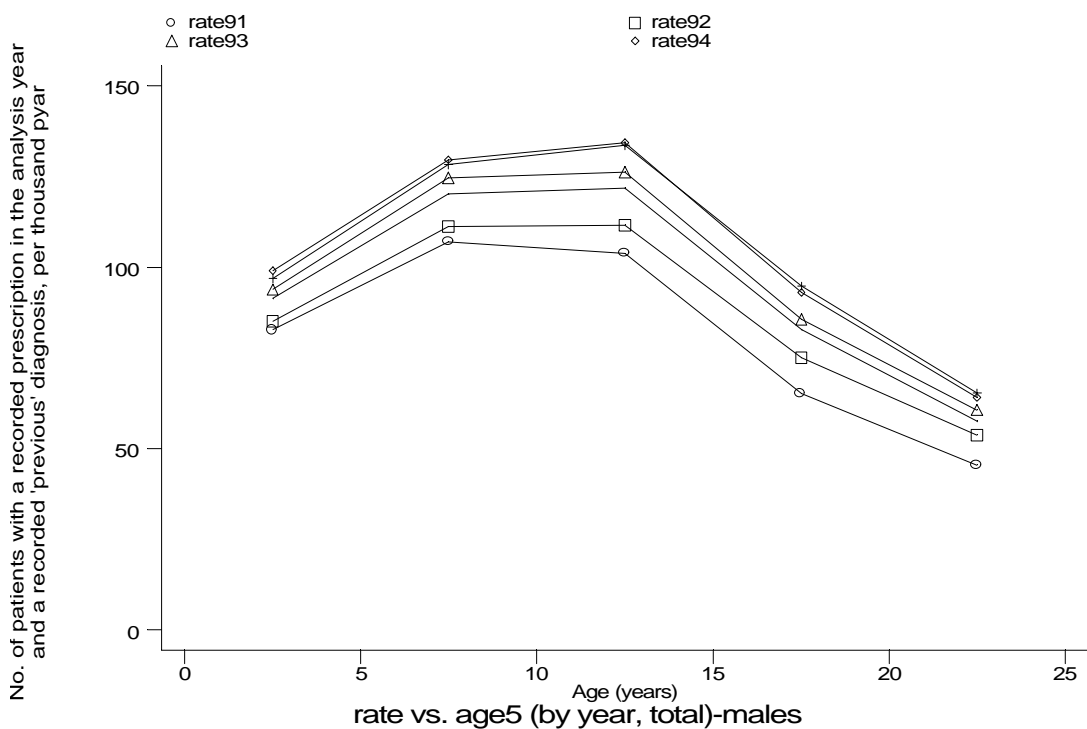
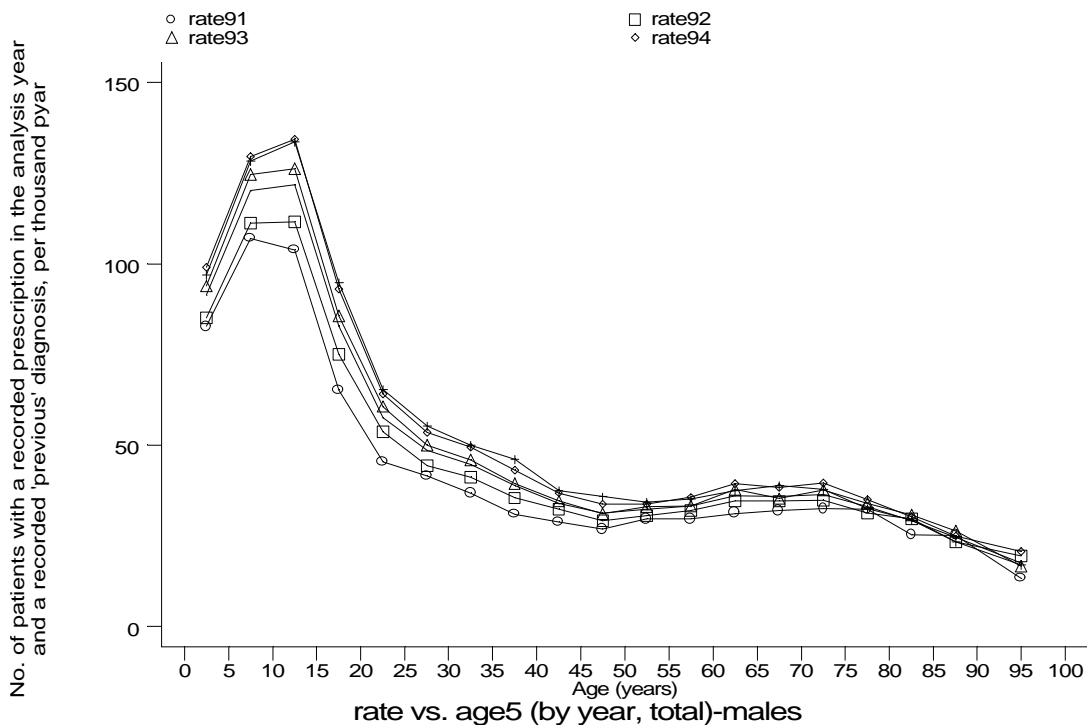
g1c8b1.gph
8. 'Inhalers' + 'previous' diag of AS, not COPD



g1c8b2.gph
8. 'Inhalers' + 'previous' diag of AS, not COPD

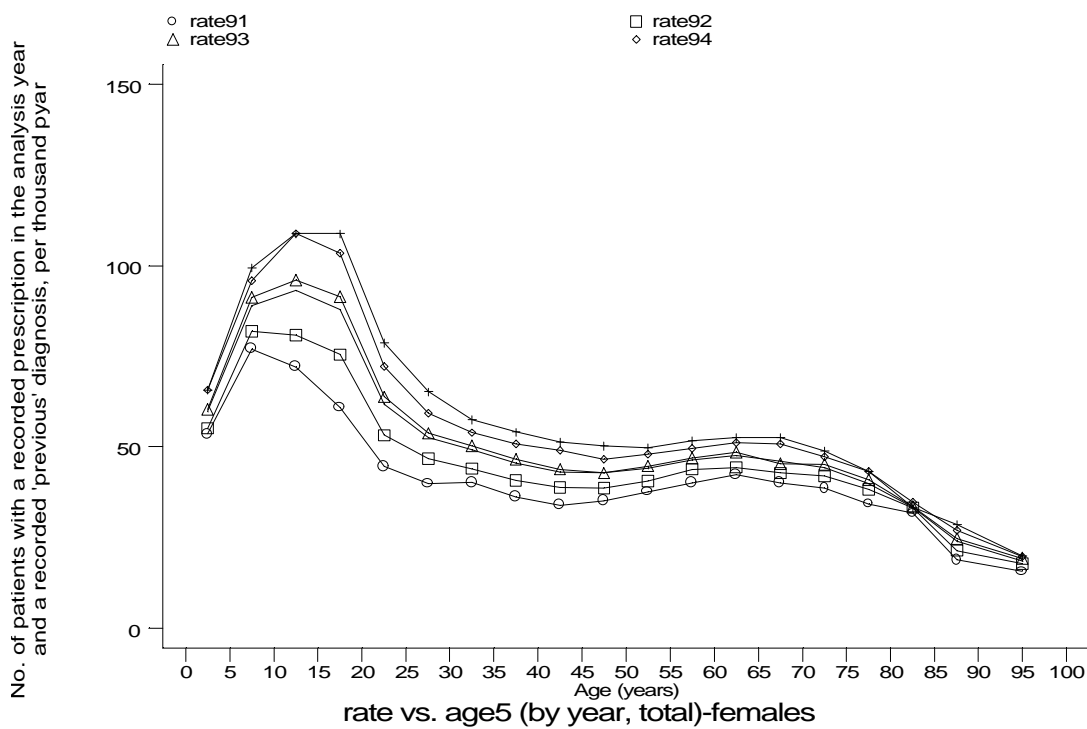
Age-sex distributions, yearly trends and cohort analysis (crude rates)

- GPRD Inhaler prescription and diagnosis of asthma, not COPD, England 1991-95

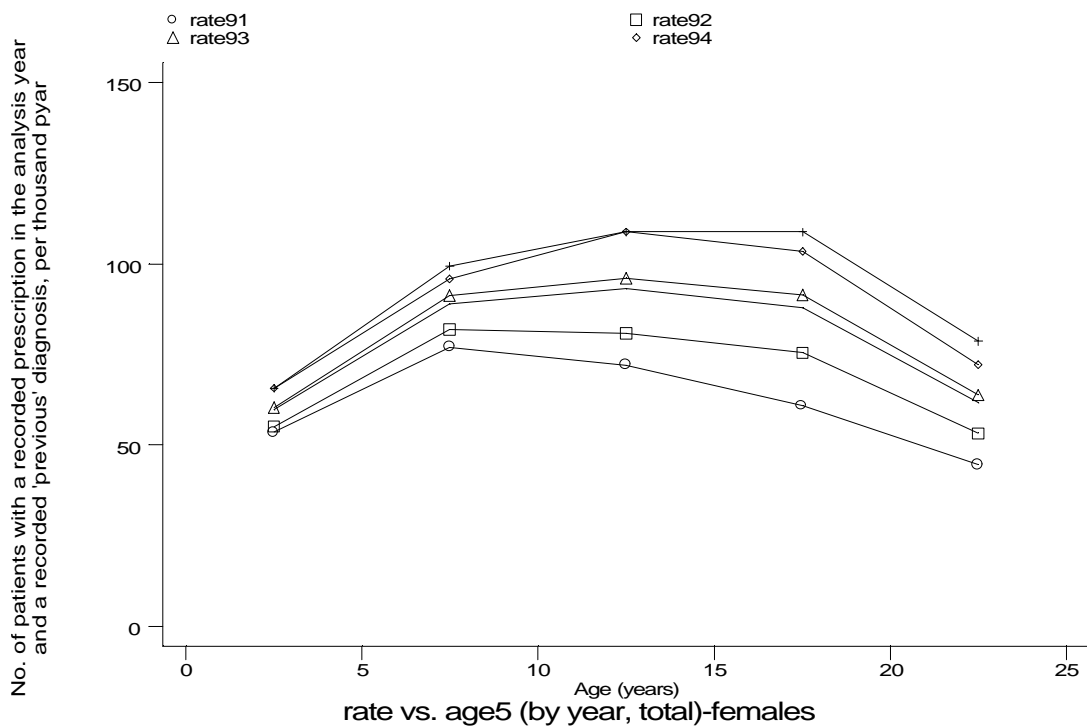


Age-sex distributions, yearly trends and cohort analysis (crude rates)

- GPRD Inhaler prescription and diagnosis of asthma, not COPD, England 1991-95



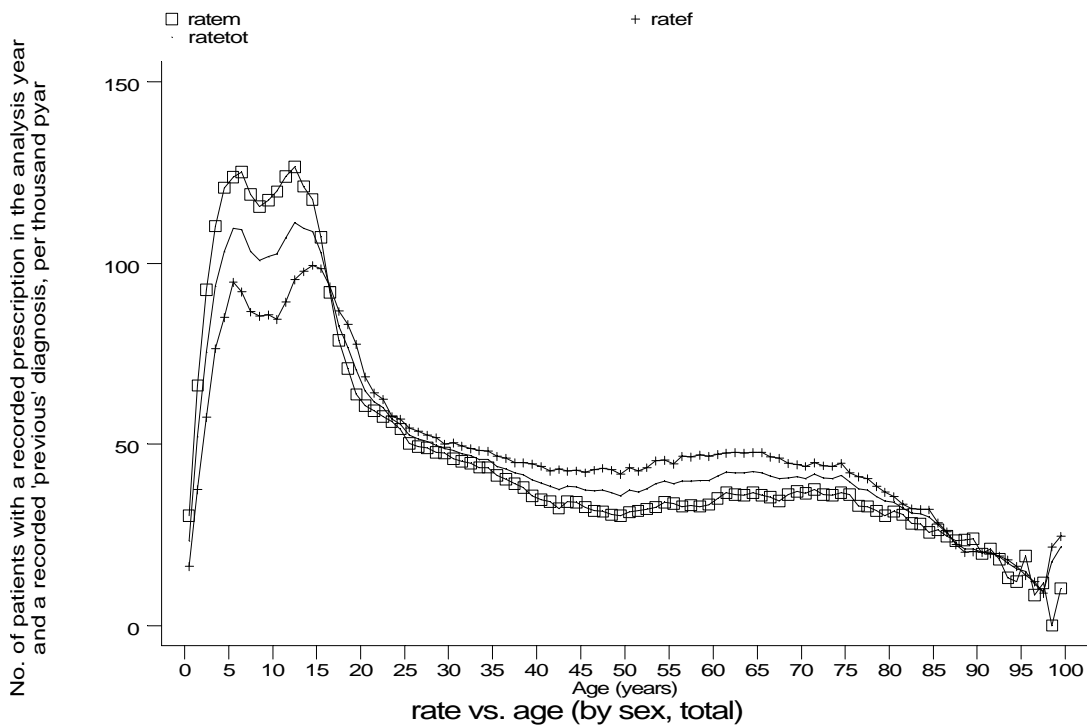
g1c8b1f.gph: FEMALES
8. 'Inhalers' + 'previous' diag of AS, not COPD



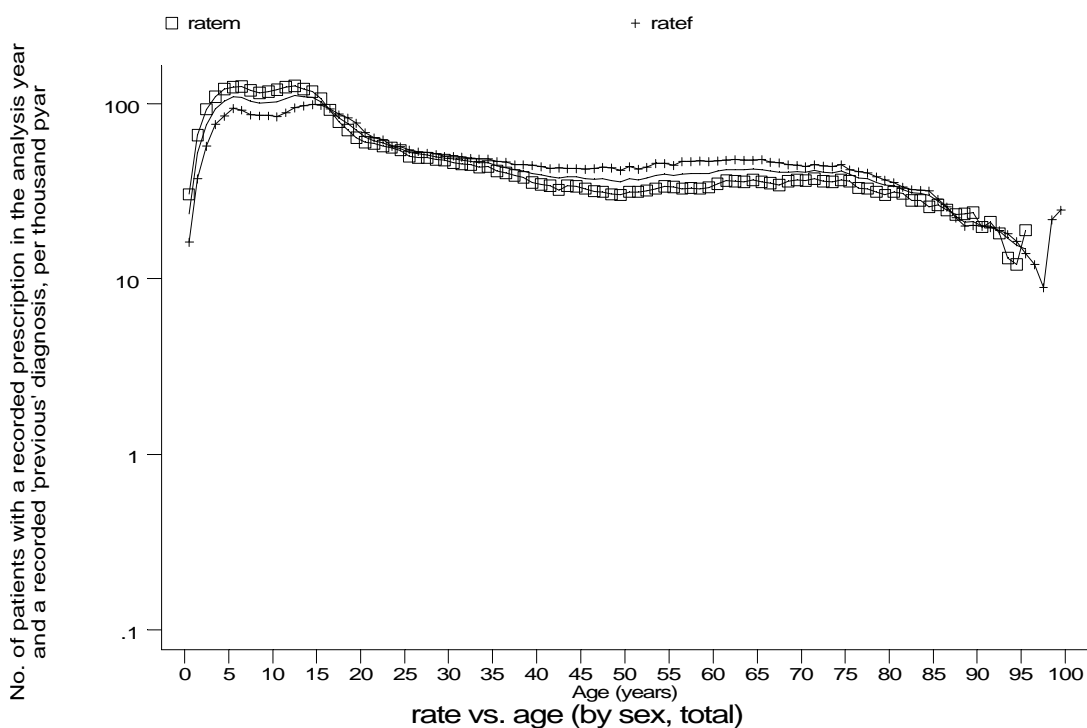
g1c8b2f.gph: FEMALES
8. 'Inhalers' + 'previous' diag of AS, not COPD

Age-sex distributions, yearly trends and cohort analysis (crude rates)

- GPRD Inhaler prescription and diagnosis of asthma, not COPD, England 1991-95



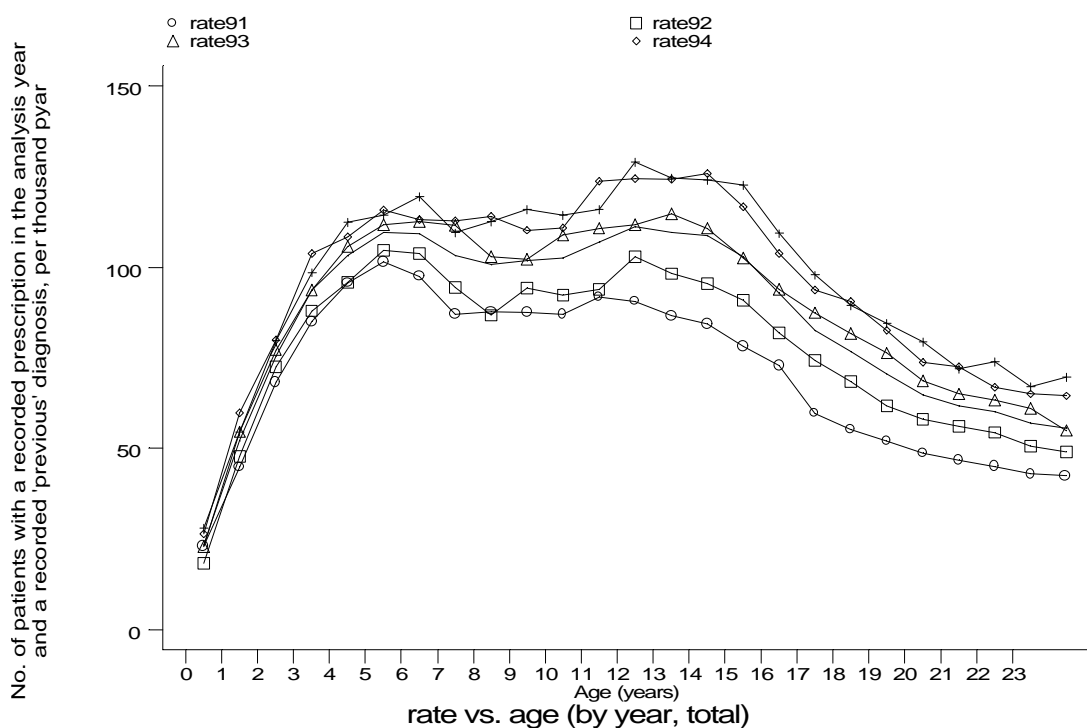
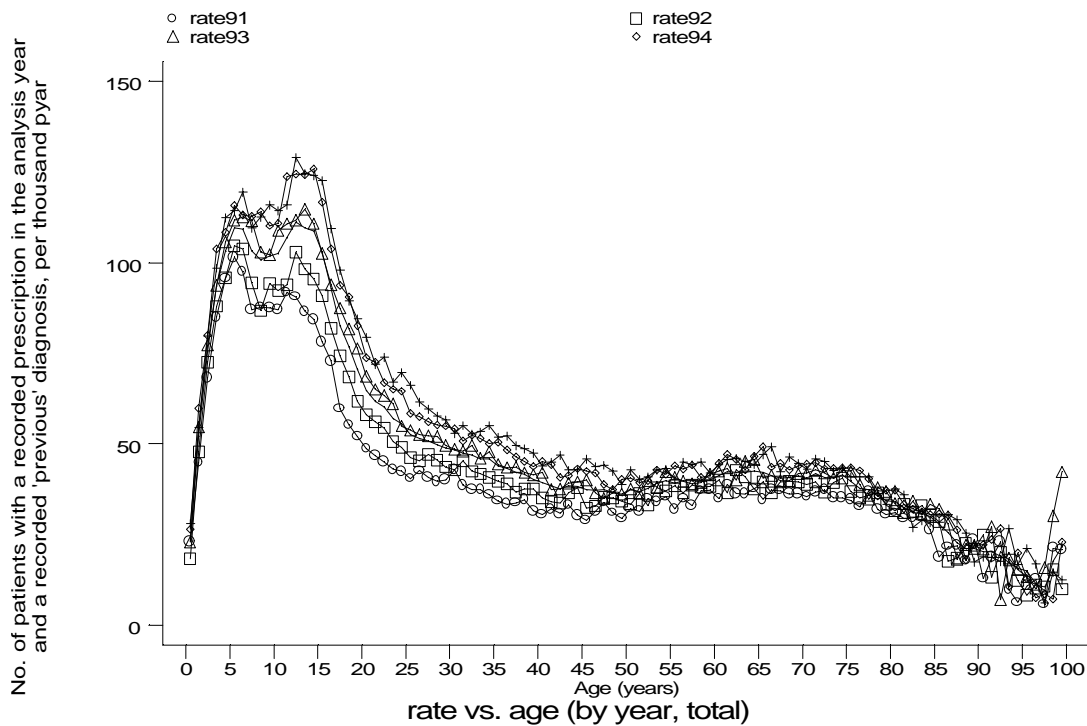
g1c8c1.gph
8. 'Inhalers' + 'previous' diag of AS, not COPD



g1c8c2.gph
8. 'Inhalers' + 'previous' diag of AS, not COPD

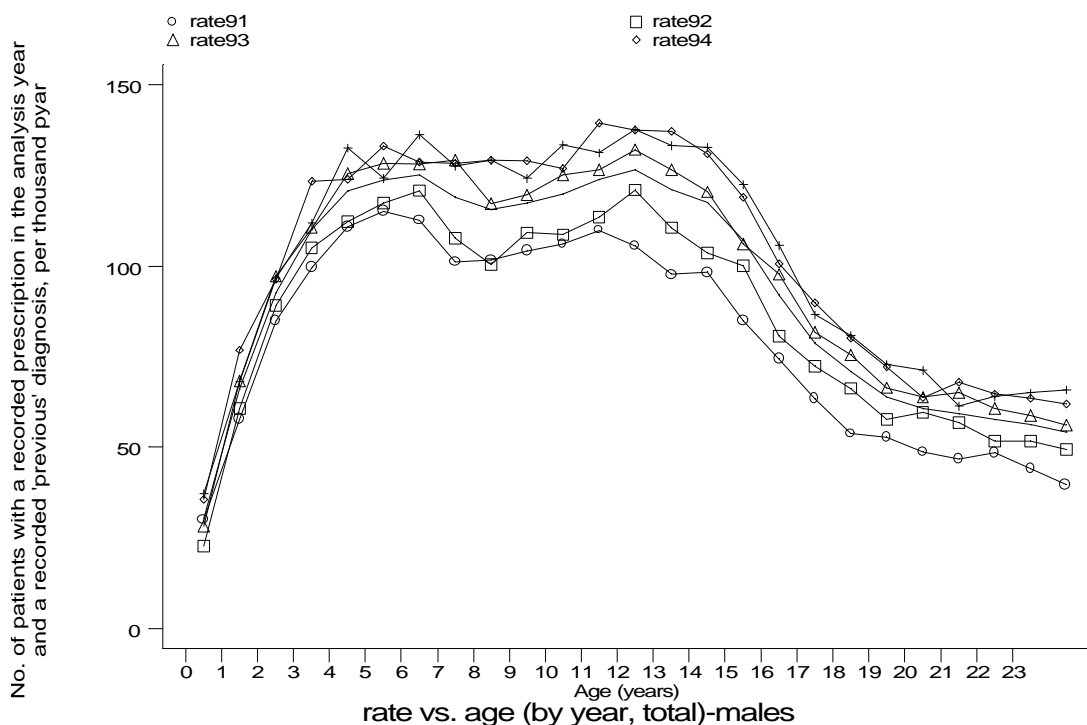
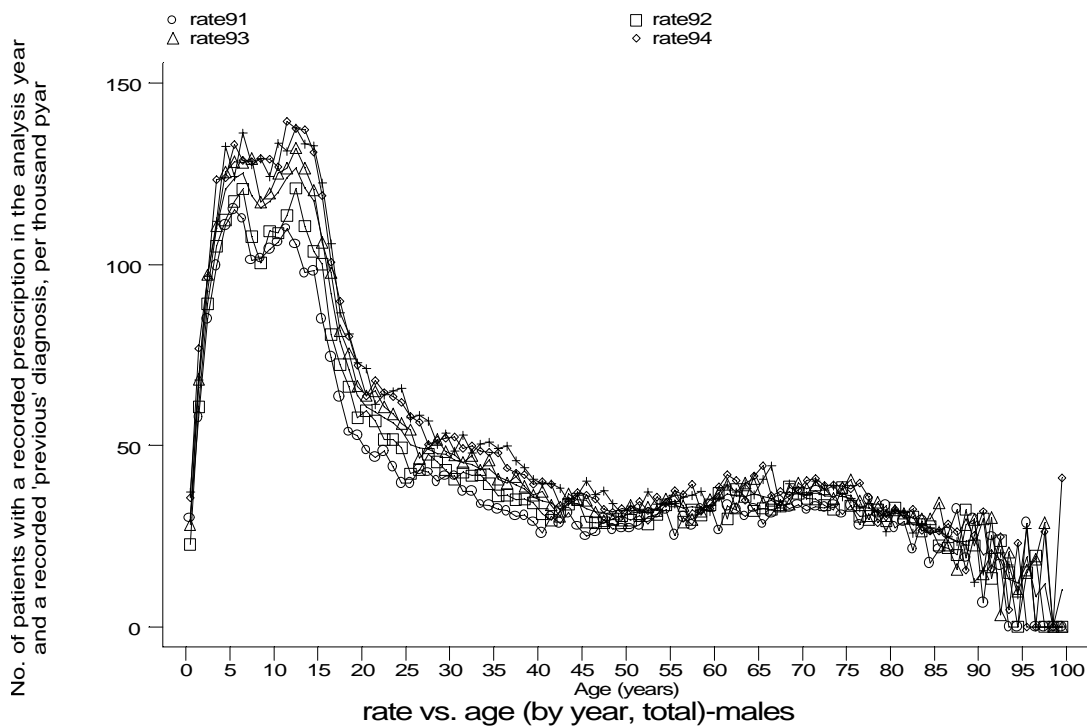
Age-sex distributions, yearly trends and cohort analysis (crude rates)

- GPRD Inhaler prescription and diagnosis of asthma, not COPD, England 1991-95



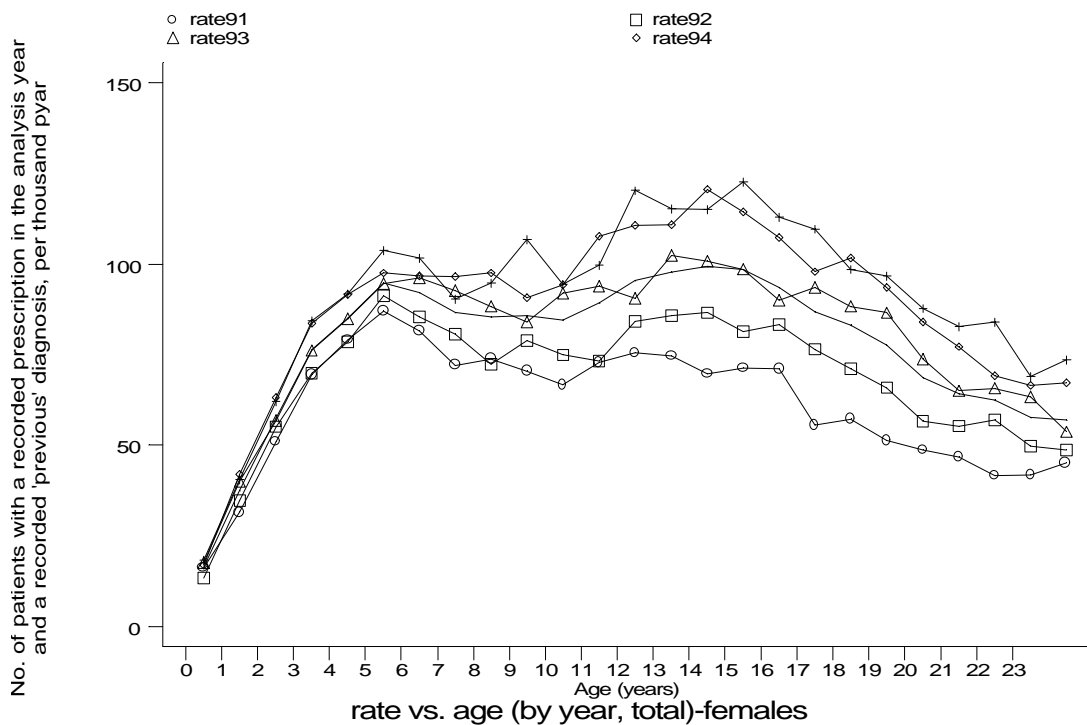
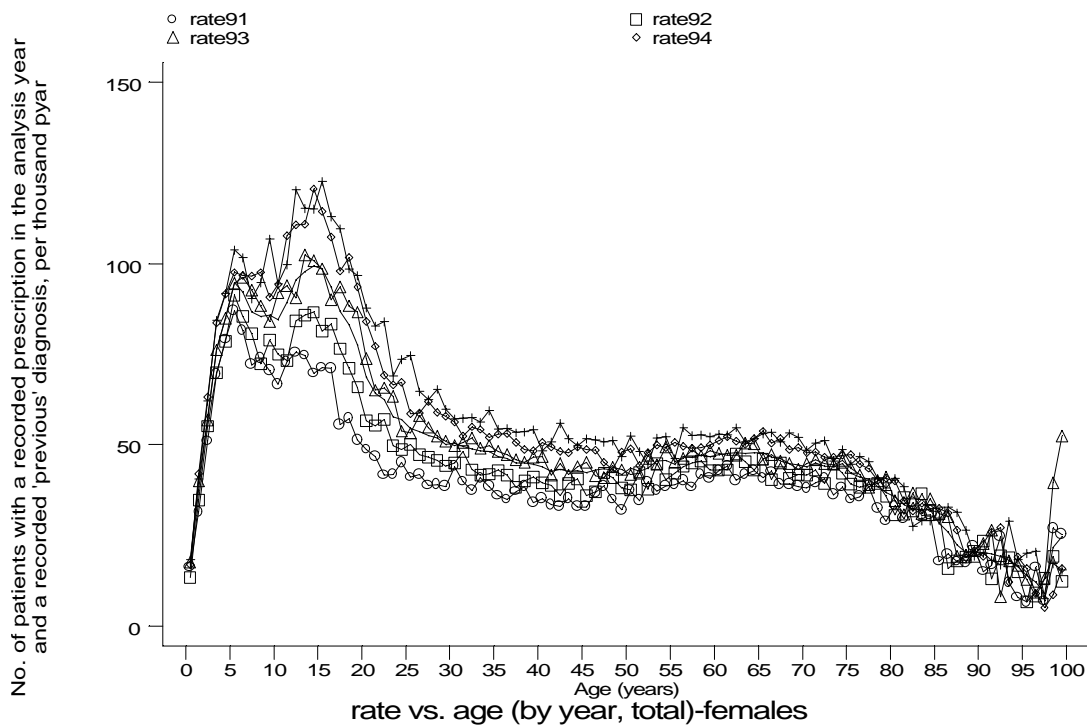
Age-sex distributions, yearly trends and cohort analysis (crude rates)

- GPRD Inhaler prescription and diagnosis of asthma, not COPD, England 1991-95



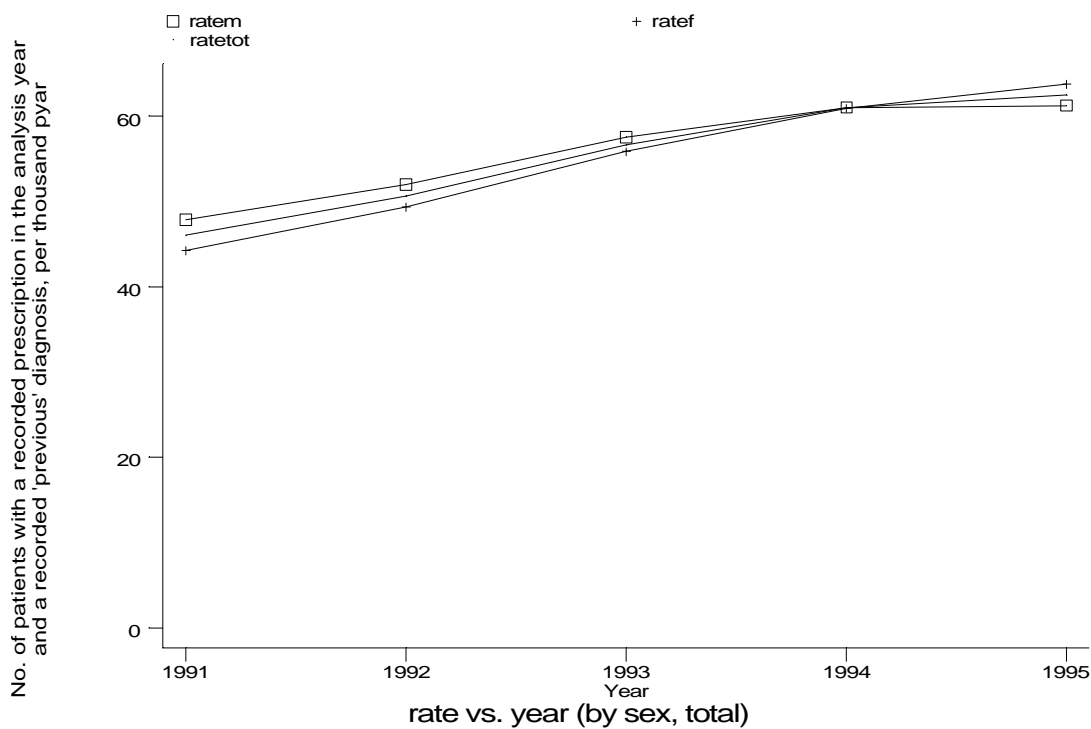
Age-sex distributions, yearly trends and cohort analysis (crude rates)

- GPRD Inhaler prescription and diagnosis of asthma, not COPD, England 1991-95

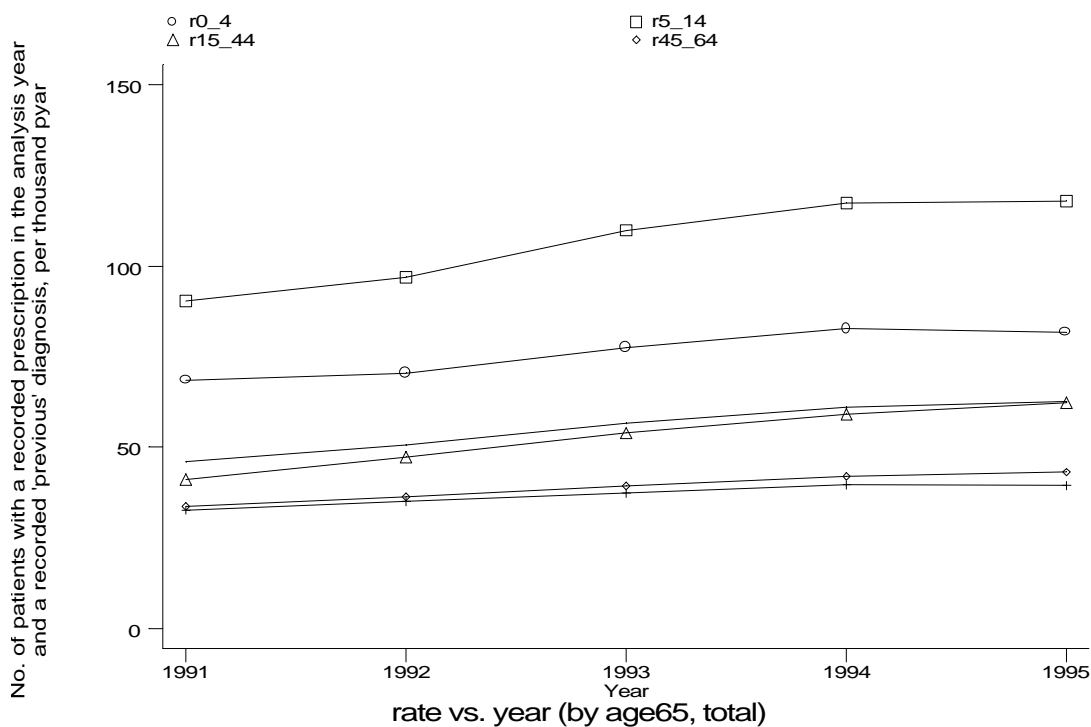


Age-sex distributions, yearly trends and cohort analysis (crude rates)

- GPRD Inhaler prescription and diagnosis of asthma, not COPD, England 1991-95



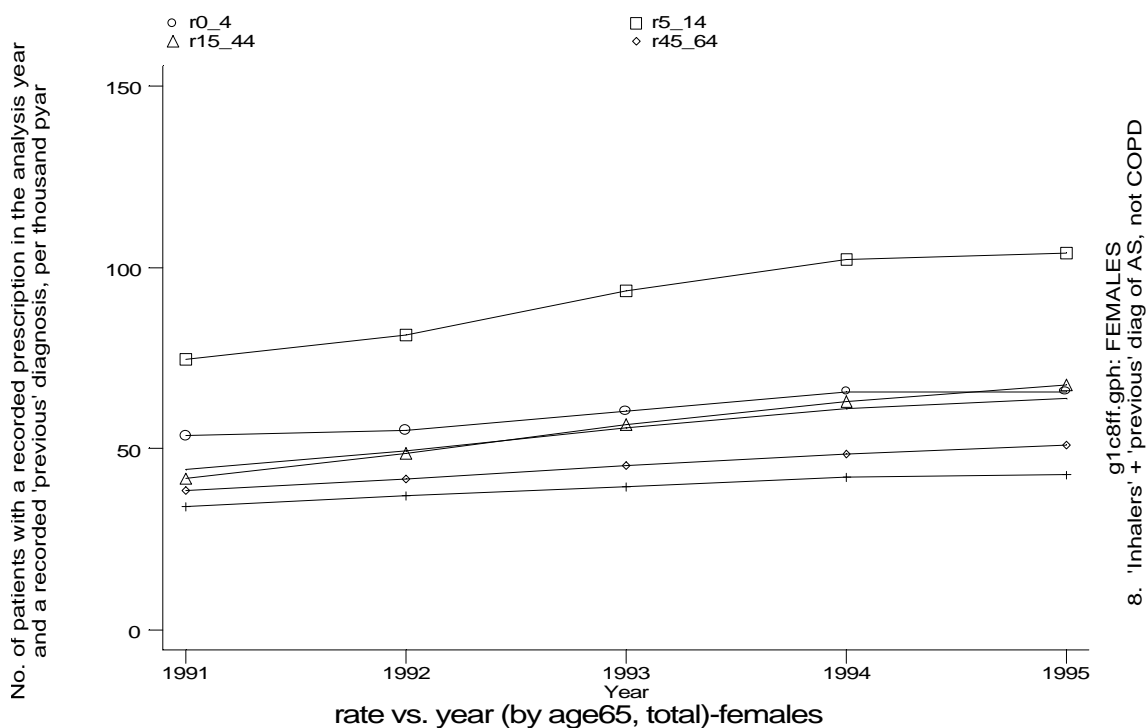
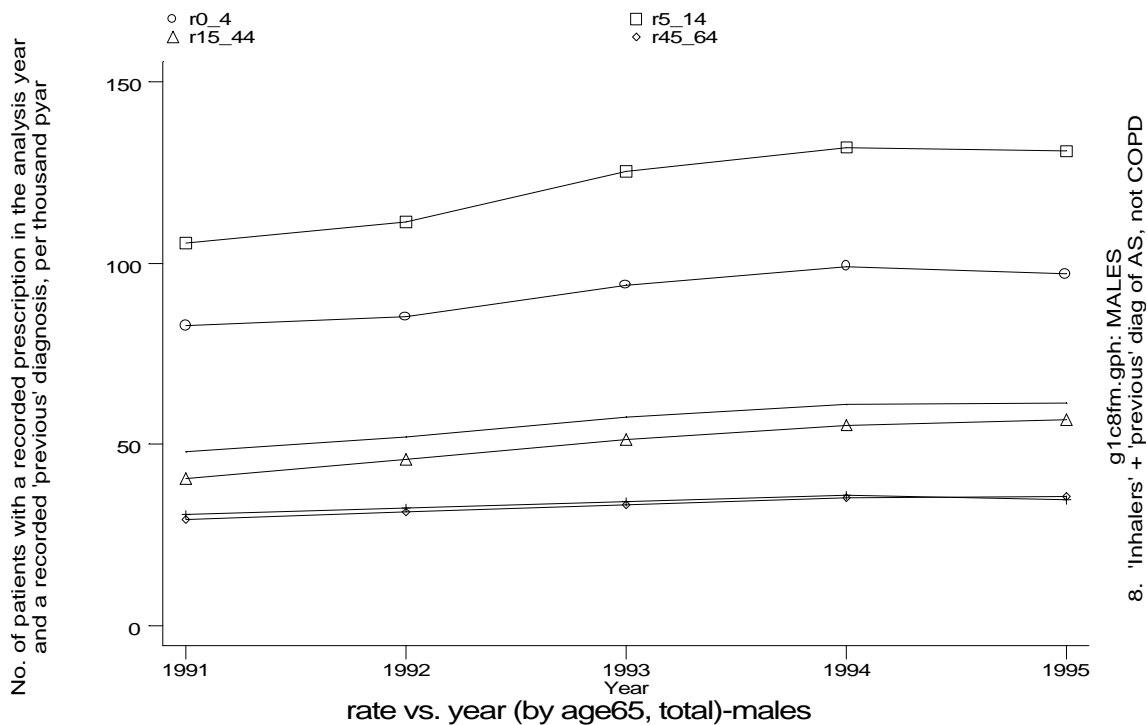
g1c8e.gph
8. 'Inhalers' + 'previous' diag of AS, not COPD



g1c8f.gph
8. 'Inhalers' + 'previous' diag of AS, not COPD

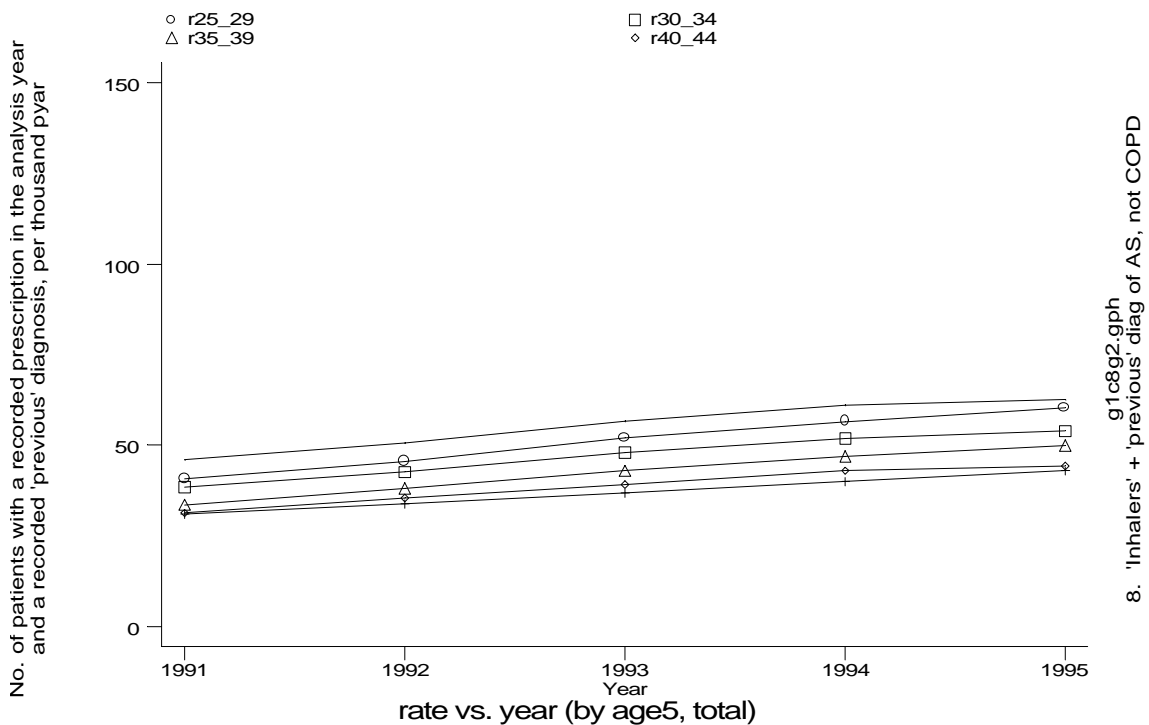
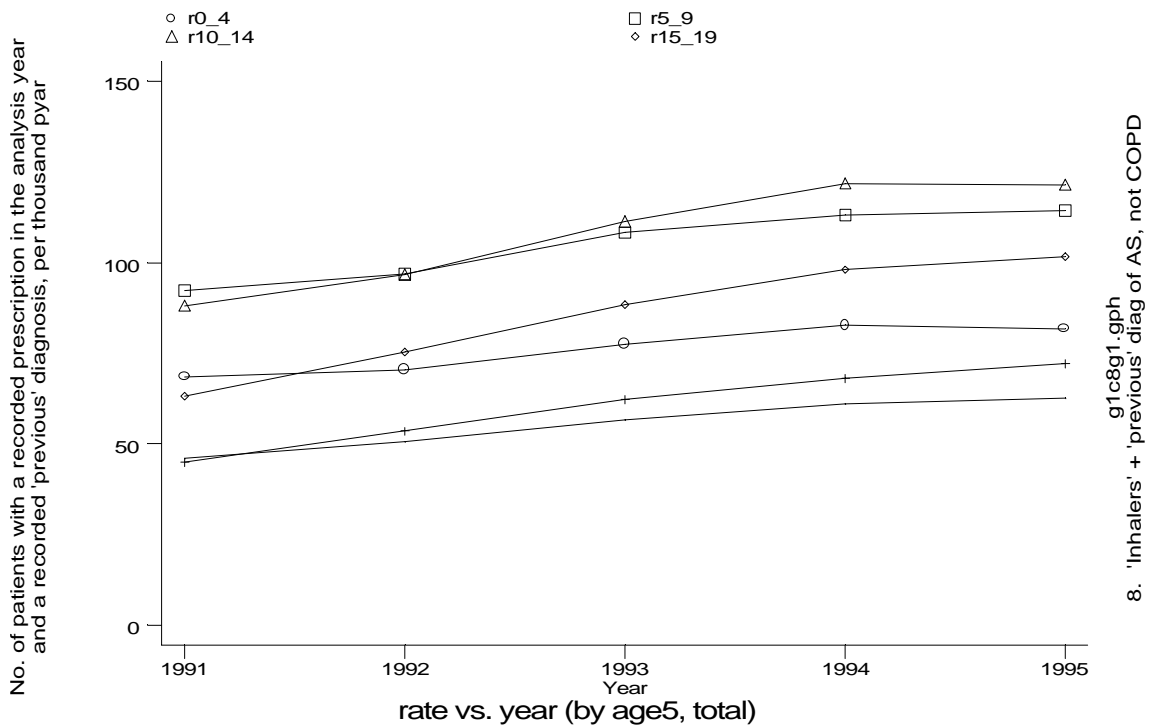
Age-sex distributions, yearly trends and cohort analysis (crude rates)

- GPRD Inhaler prescription and diagnosis of asthma, not COPD, England 1991-95



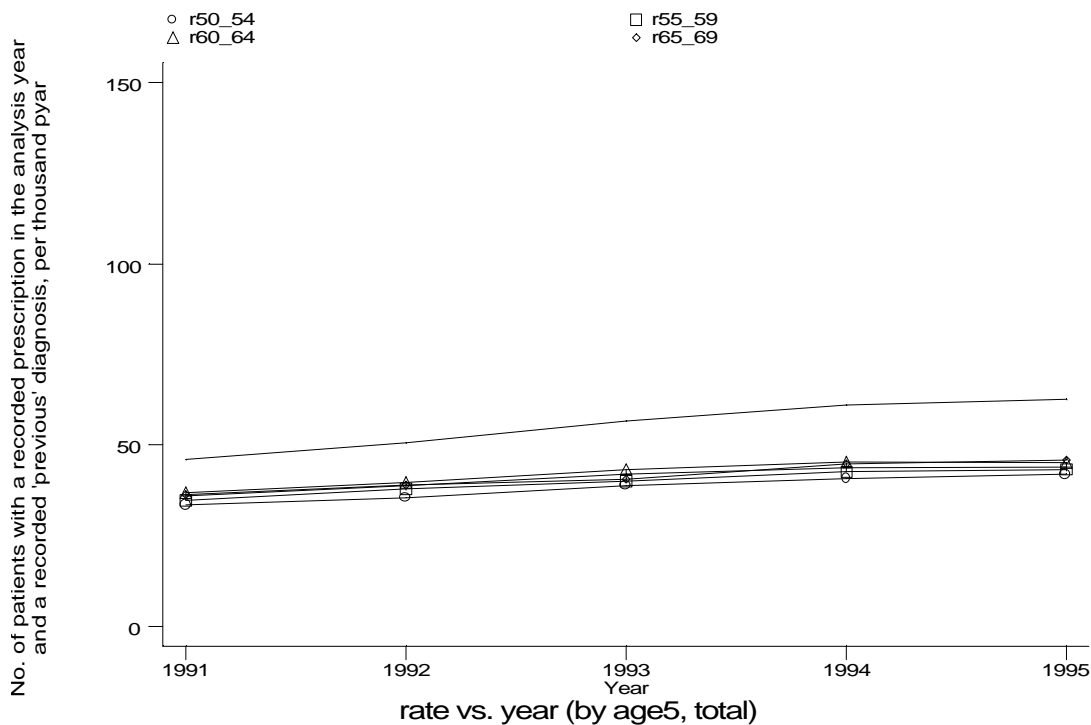
Age-sex distributions, yearly trends and cohort analysis (crude rates)

- GPRD Inhaler prescription and diagnosis of asthma, not COPD, England 1991-95

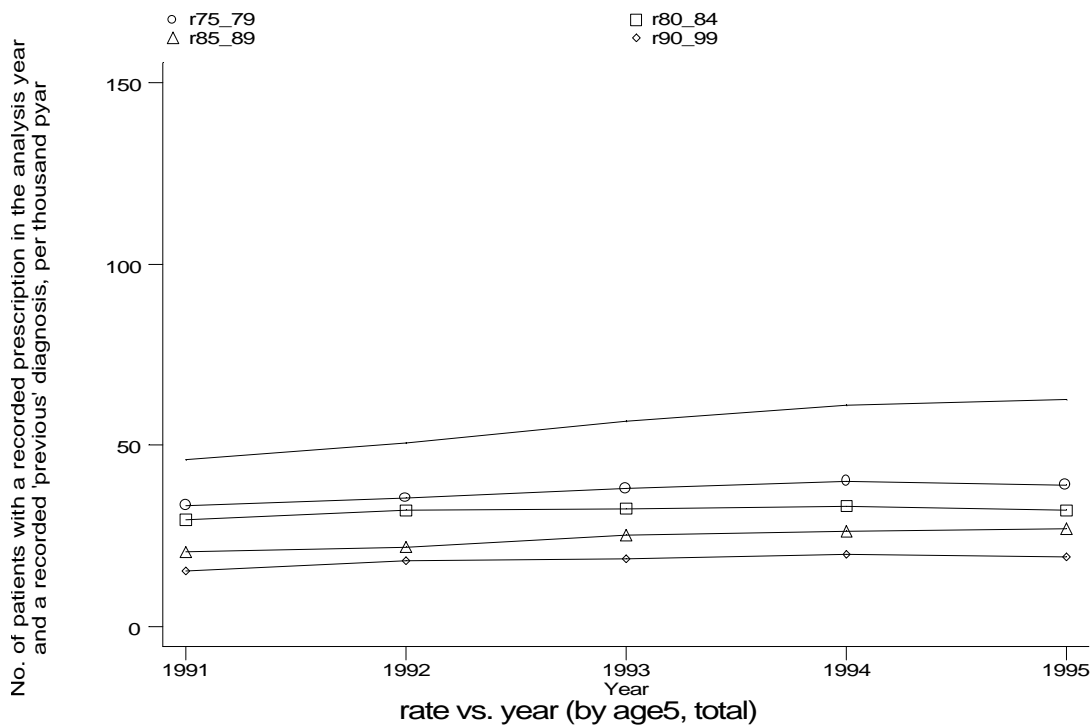


Age-sex distributions, yearly trends and cohort analysis (crude rates)

- GPRD Inhaler prescription and diagnosis of asthma, not COPD, England 1991-95



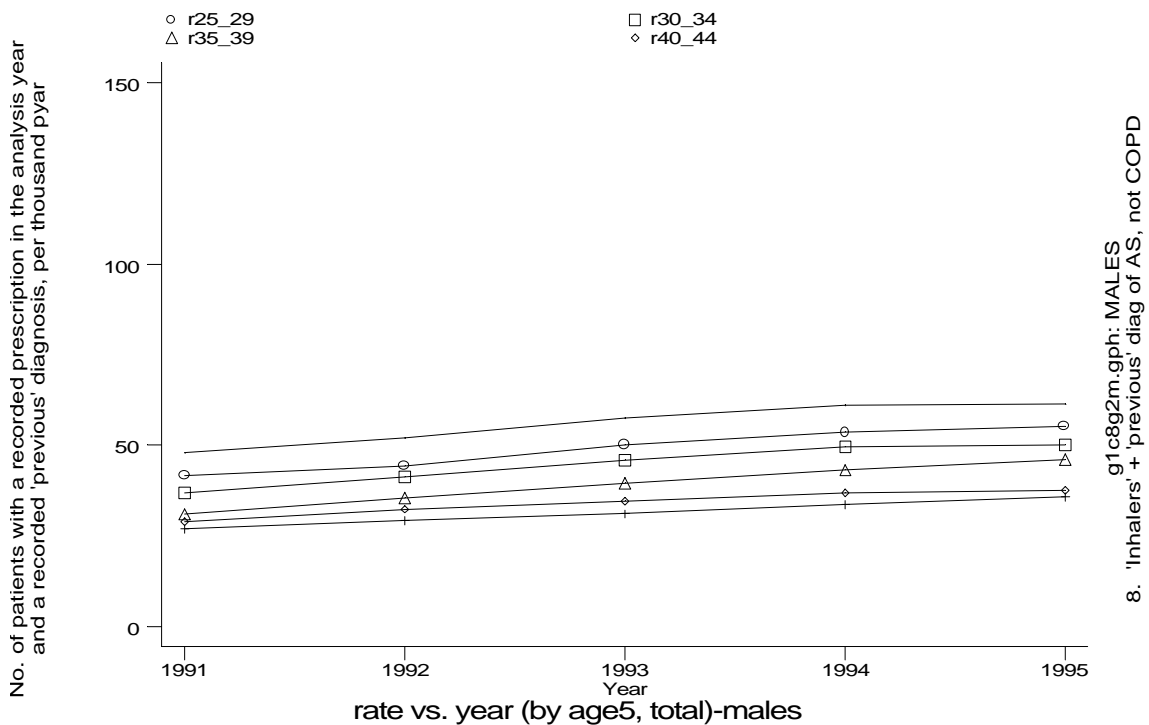
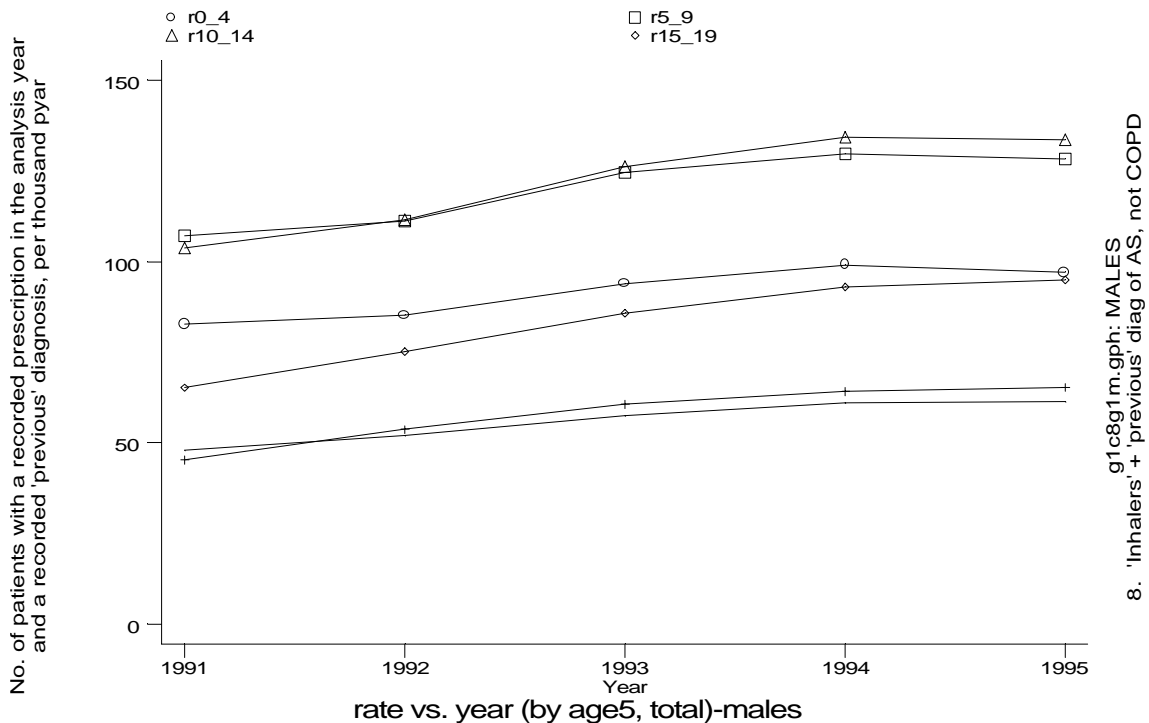
g1c8g3.gph
8. 'Inhalers' + 'previous' diag of AS, not COPD



g1c8g4.gph
8. 'Inhalers' + 'previous' diag of AS, not COPD

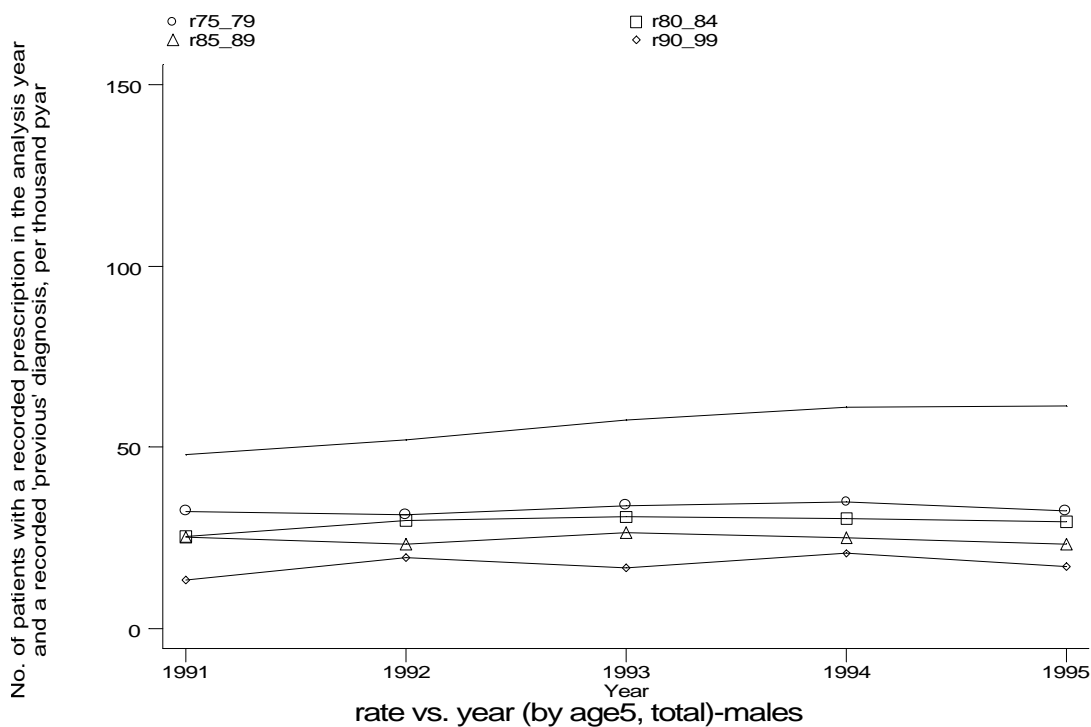
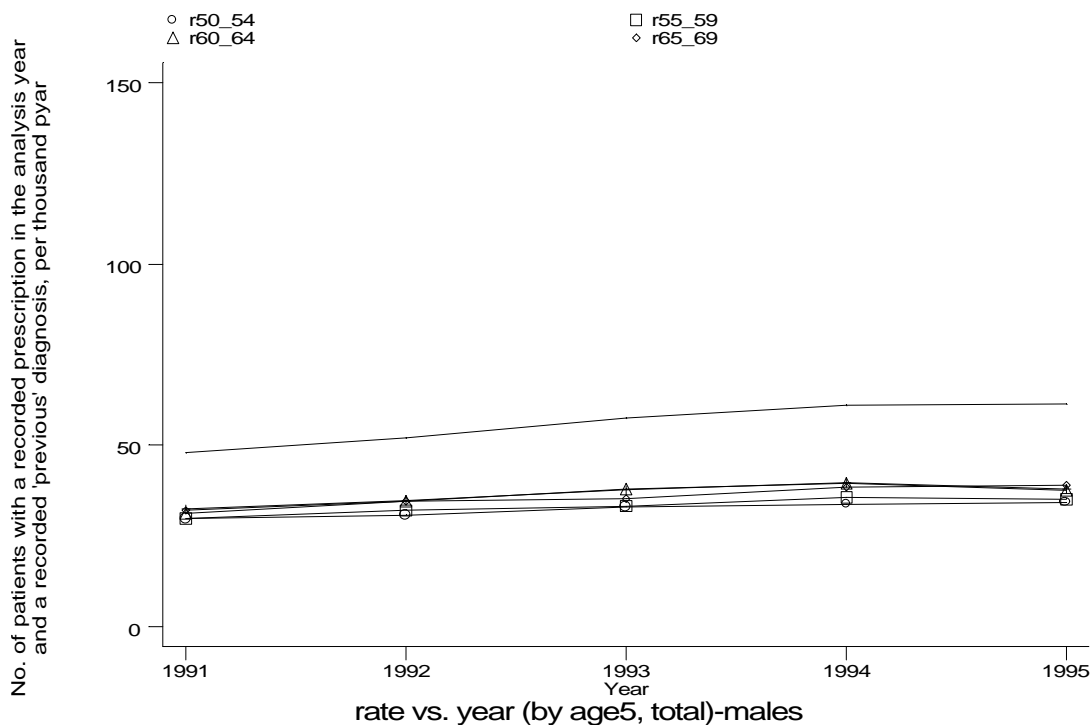
Age-sex distributions, yearly trends and cohort analysis (crude rates)

- GPRD Inhaler prescription and diagnosis of asthma, not COPD, England 1991-95



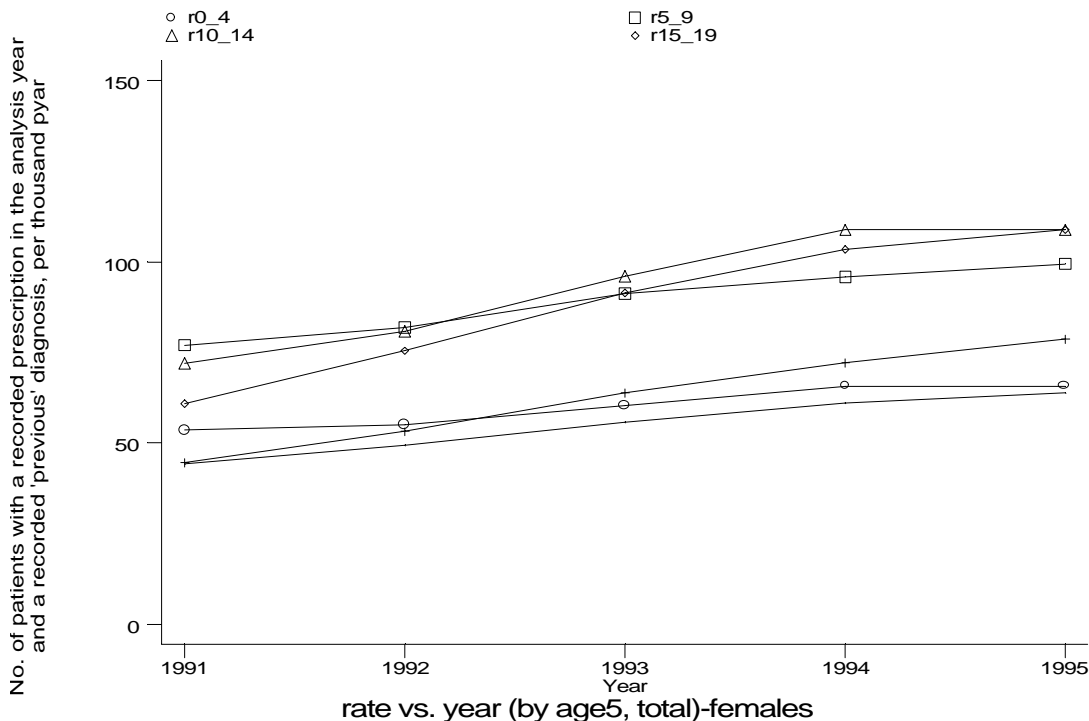
Age-sex distributions, yearly trends and cohort analysis (crude rates)

- GPRD Inhaler prescription and diagnosis of asthma, not COPD, England 1991-95

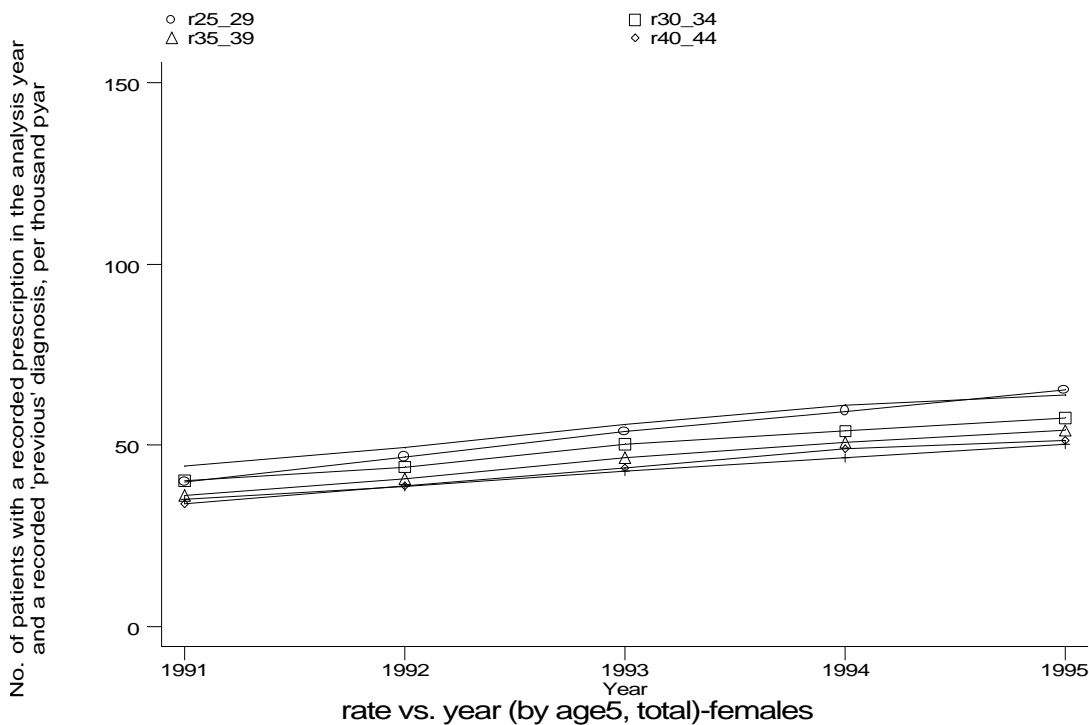


Age-sex distributions, yearly trends and cohort analysis (crude rates)

- GPRD Inhaler prescription and diagnosis of asthma, not COPD, England 1991-95



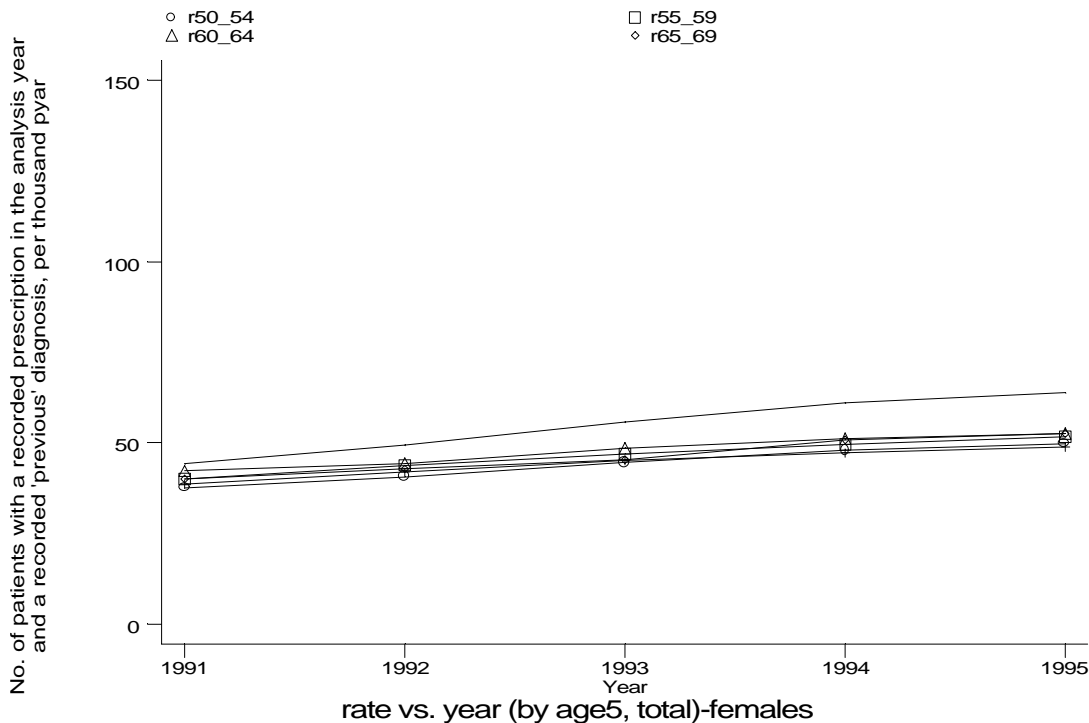
g1c8g1f.gph: FEMALES
8. 'Inhalers' + 'previous' diag of AS, not COPD



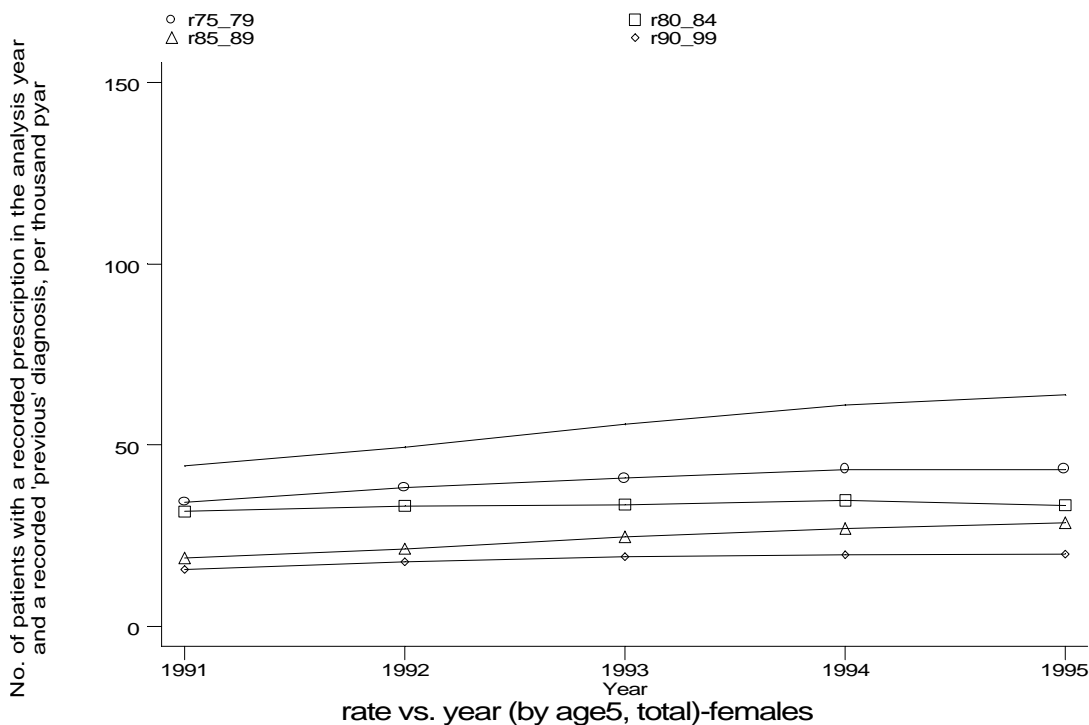
g1c8g2f.gph: FEMALES
8. 'Inhalers' + 'previous' diag of AS, not COPD

Age-sex distributions, yearly trends and cohort analysis (crude rates)

- GPRD Inhaler prescription and diagnosis of asthma, not COPD, England 1991-95



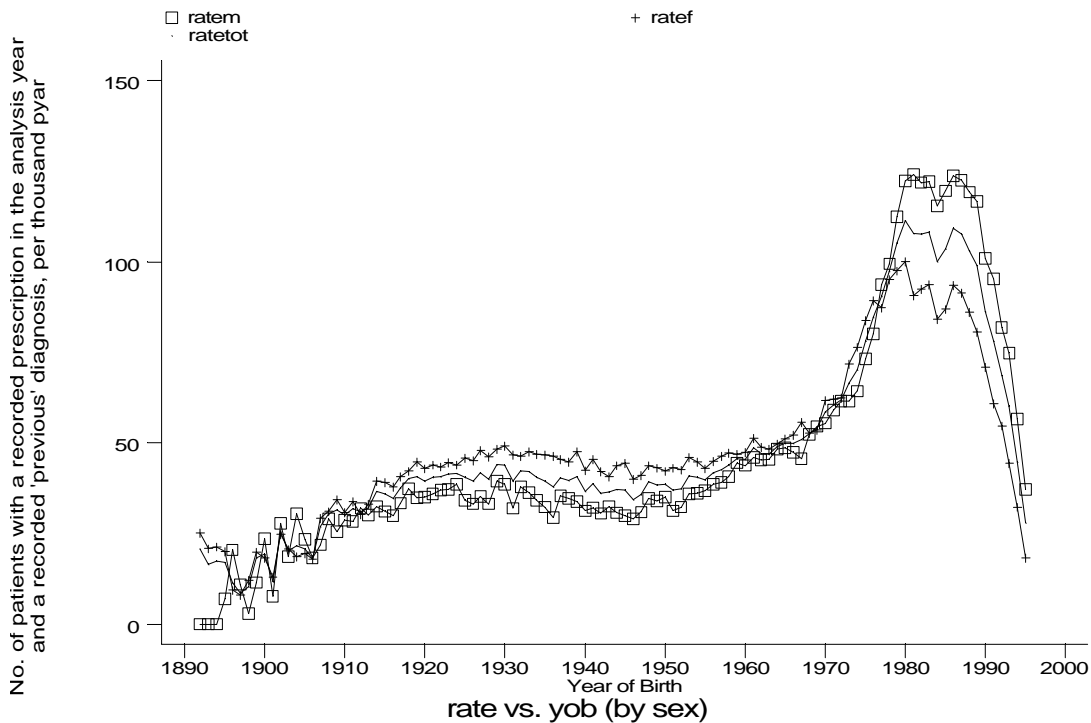
g1c8g3f.gph: FEMALES
8. 'Inhalers' + 'previous' diag of AS, not COPD



g1c8g4f.gph: FEMALES
8. 'Inhalers' + 'previous' diag of AS, not COPD

Age-sex distributions, yearly trends and cohort analysis (crude rates)

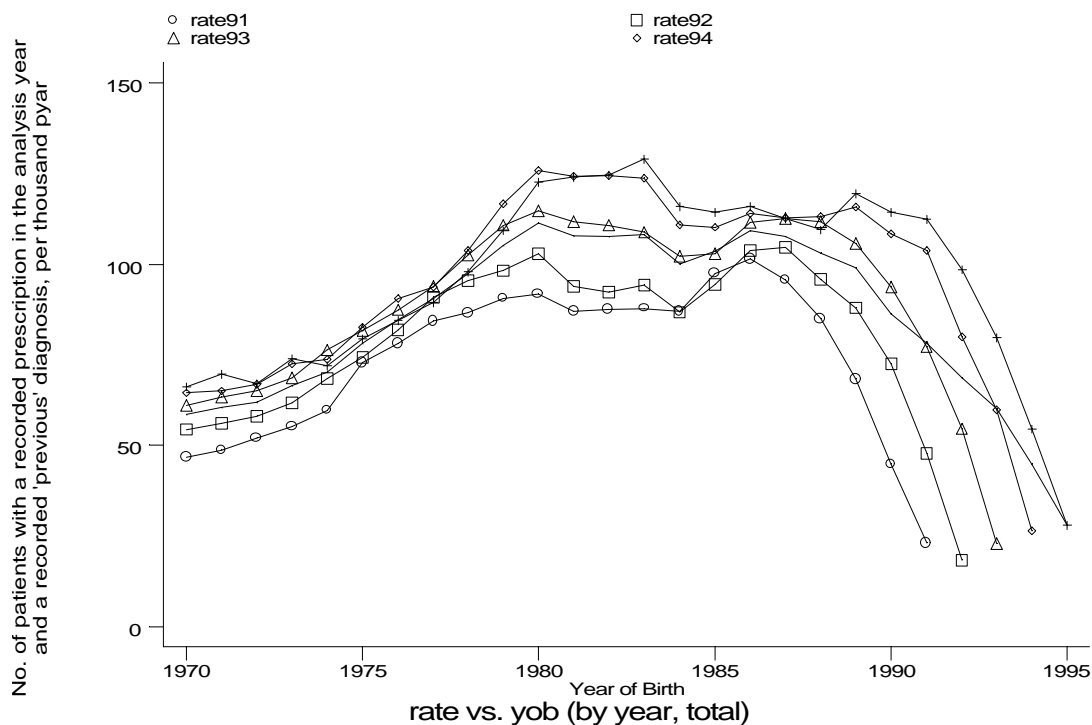
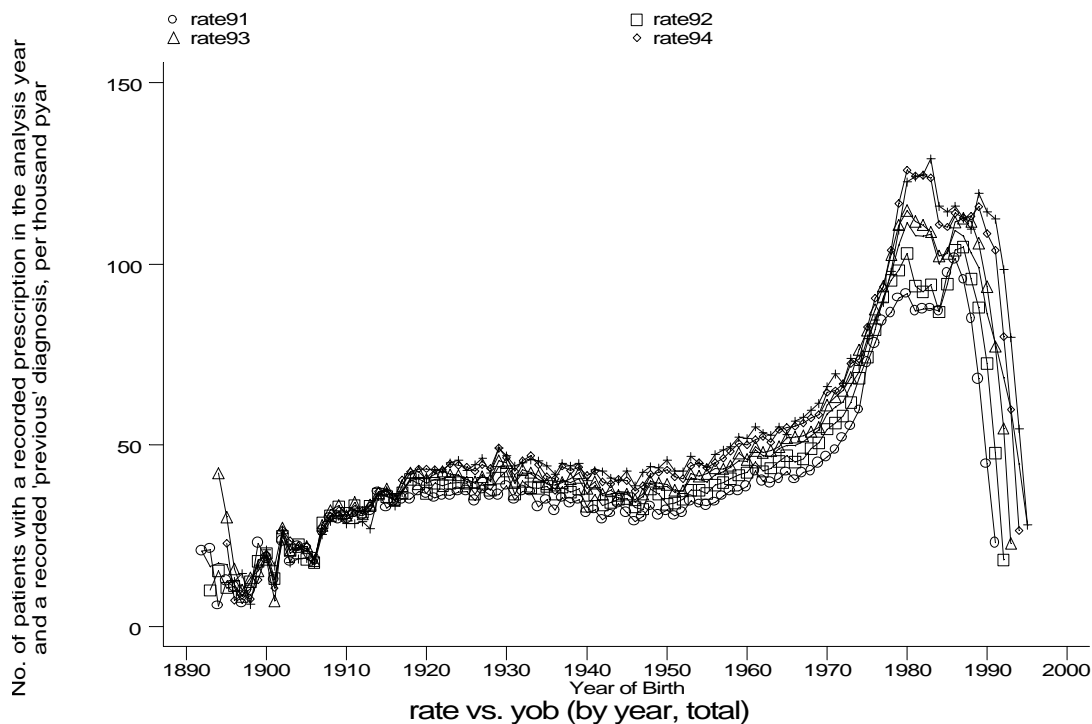
- GPRD Inhaler prescription and diagnosis of asthma, not COPD, England 1991-95



g1c8h.gph
8. 'Inhalers' + 'previous' diag of AS, not COPD

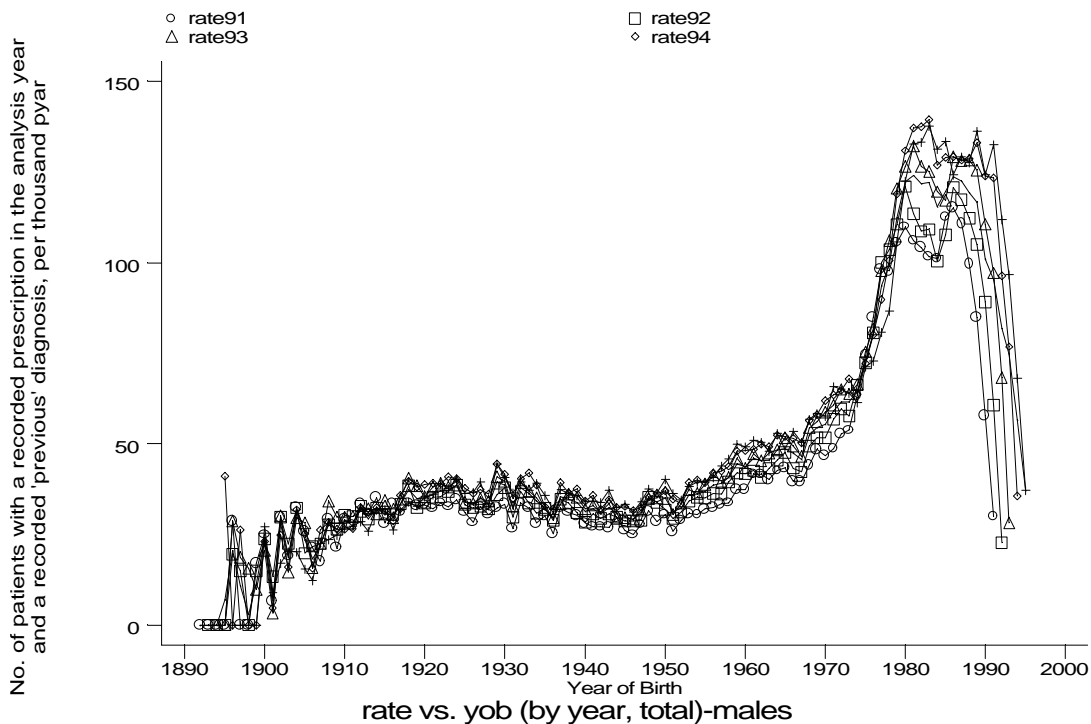
Age-sex distributions, yearly trends and cohort analysis (crude rates)

- GPRD Inhaler prescription and diagnosis of asthma, not COPD, England 1991-95

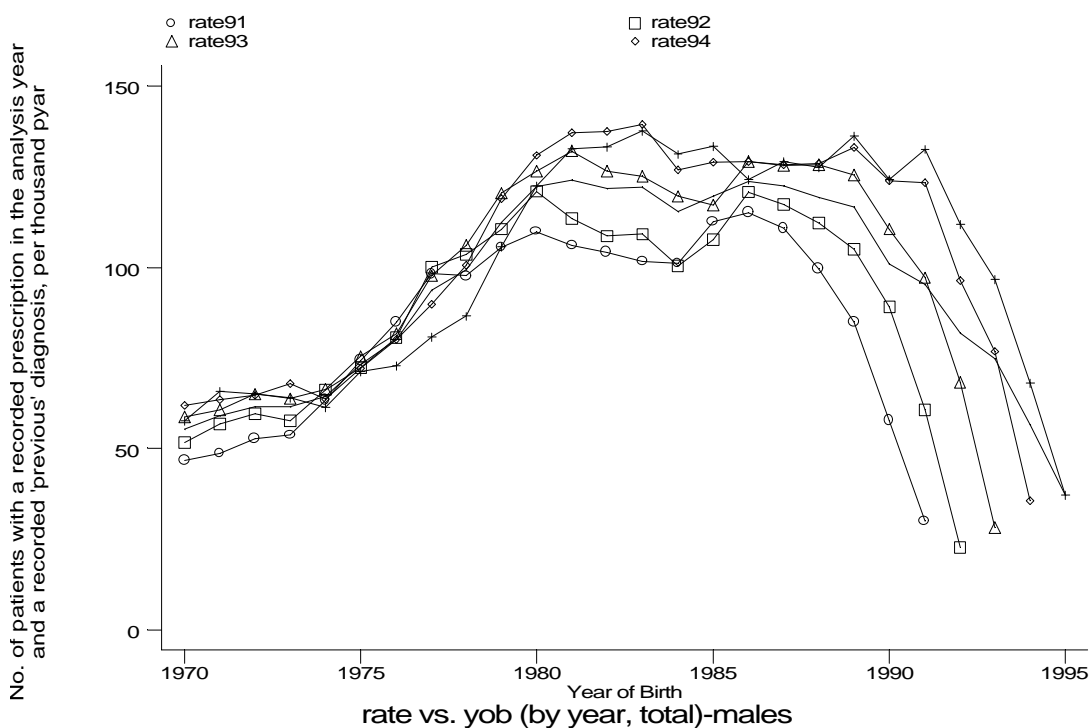


Age-sex distributions, yearly trends and cohort analysis (crude rates)

- GPRD Inhaler prescription and diagnosis of asthma, not COPD, England 1991-95



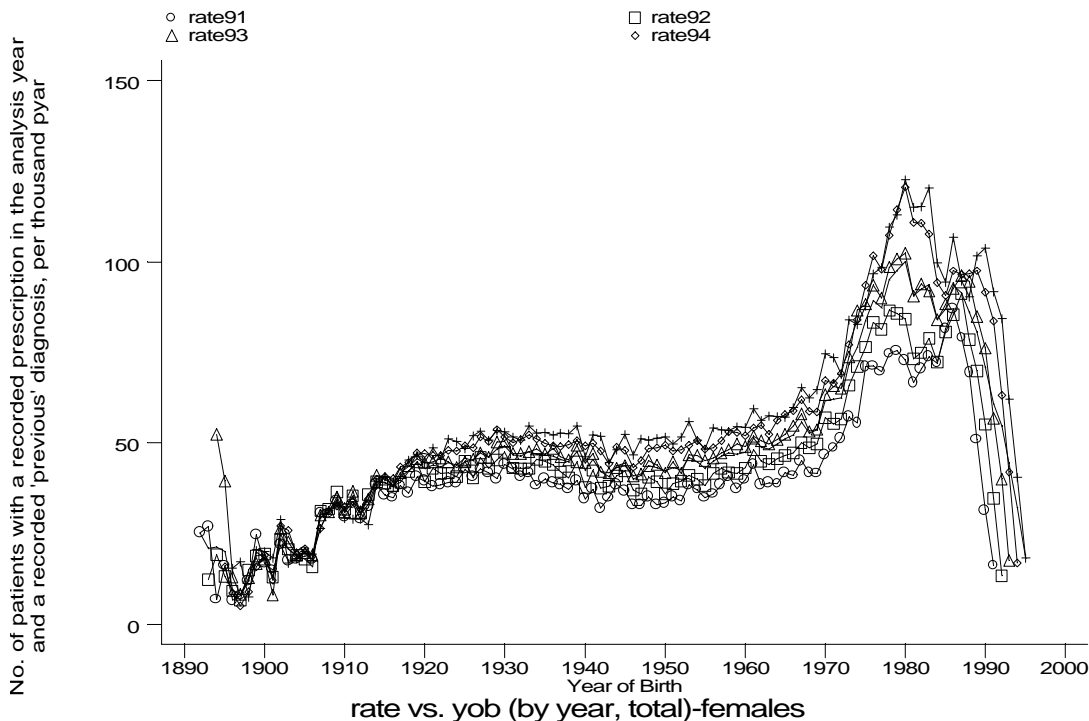
g1c8i1m.gph: MALES
8. 'Inhalers' + 'previous' diag of AS, not COPD



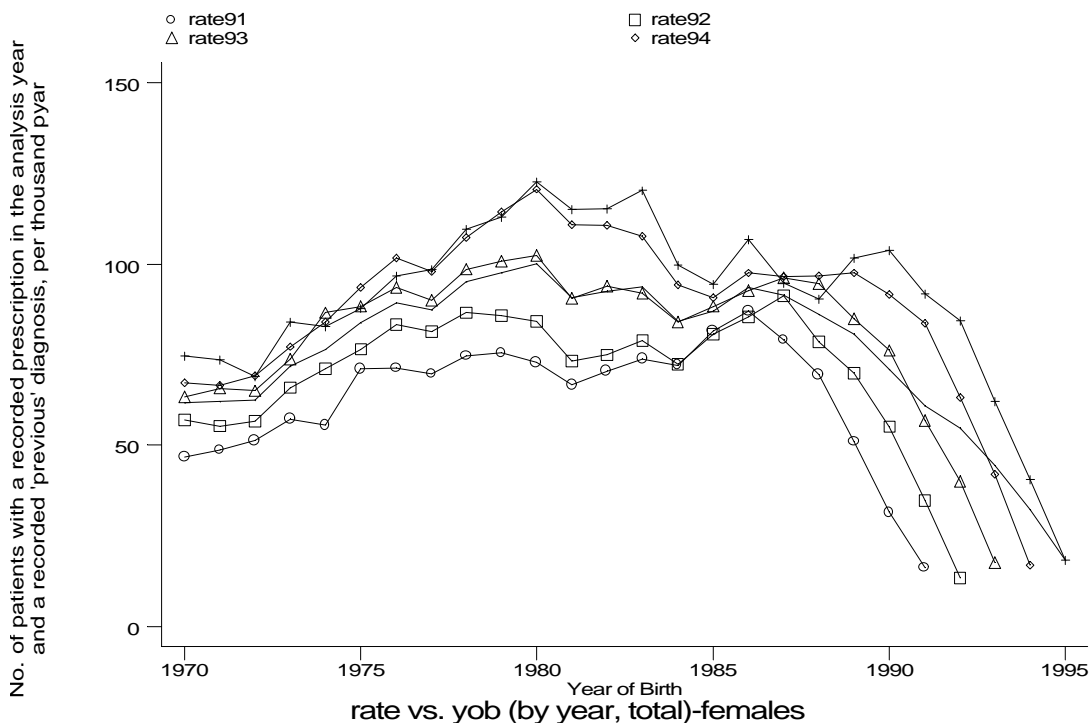
g1c8i2m.gph: MALES
8. 'Inhalers' + 'previous' diag of AS, not COPD

Age-sex distributions, yearly trends and cohort analysis (crude rates)

- GPRD Inhaler prescription and diagnosis of asthma, not COPD, England 1991-95



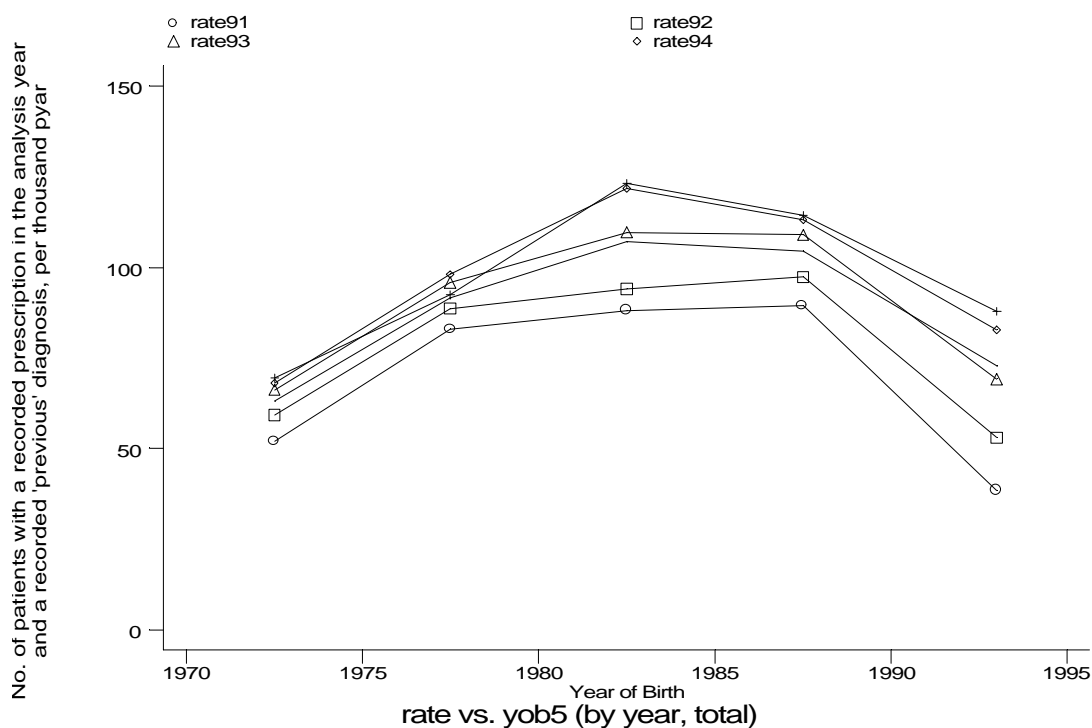
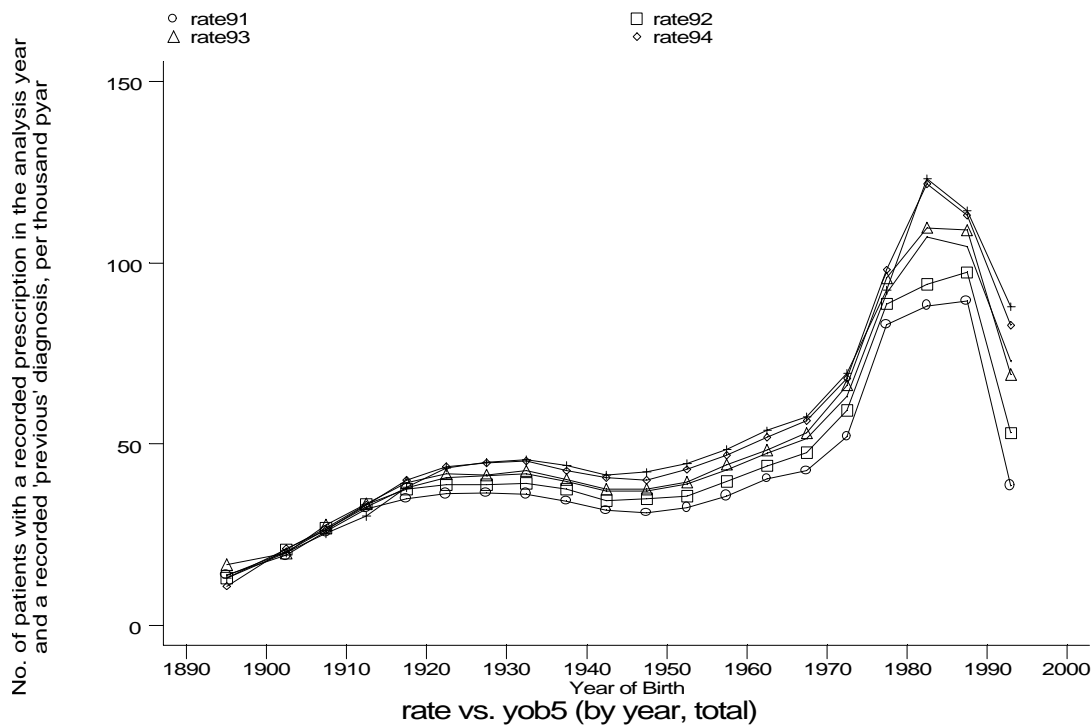
g1c8i1f.gph: FEMALES
8. 'Inhalers' + 'previous' diag of AS, not COPD



g1c8i2f.gph: FEMALES
8. 'Inhalers' + 'previous' diag of AS, not COPD

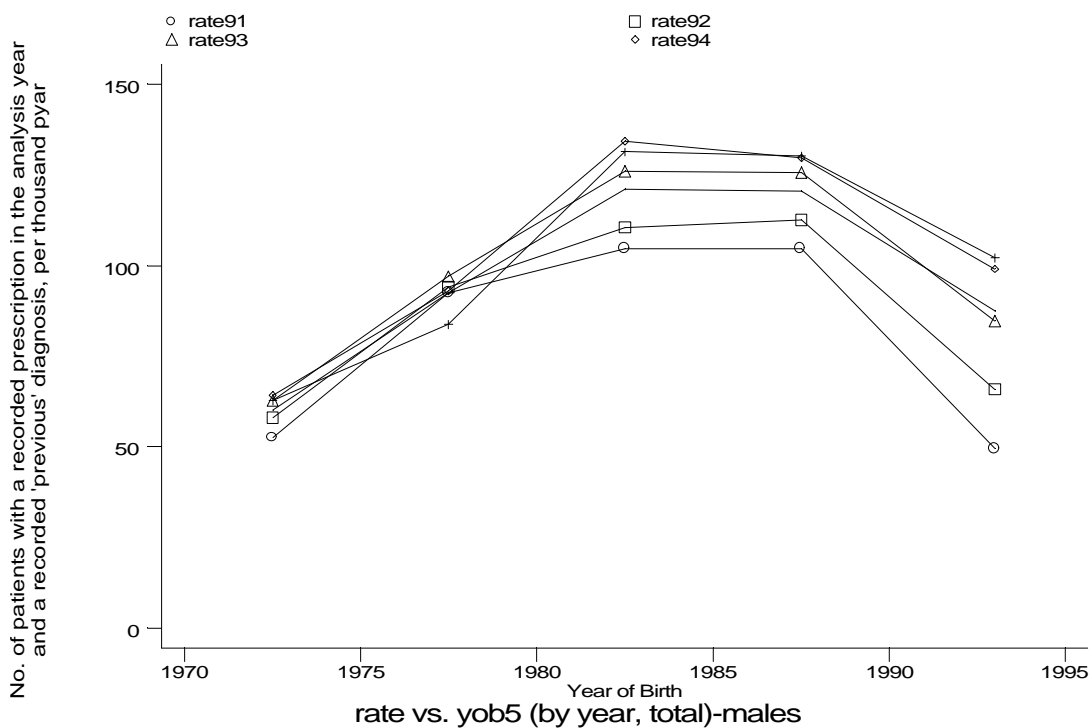
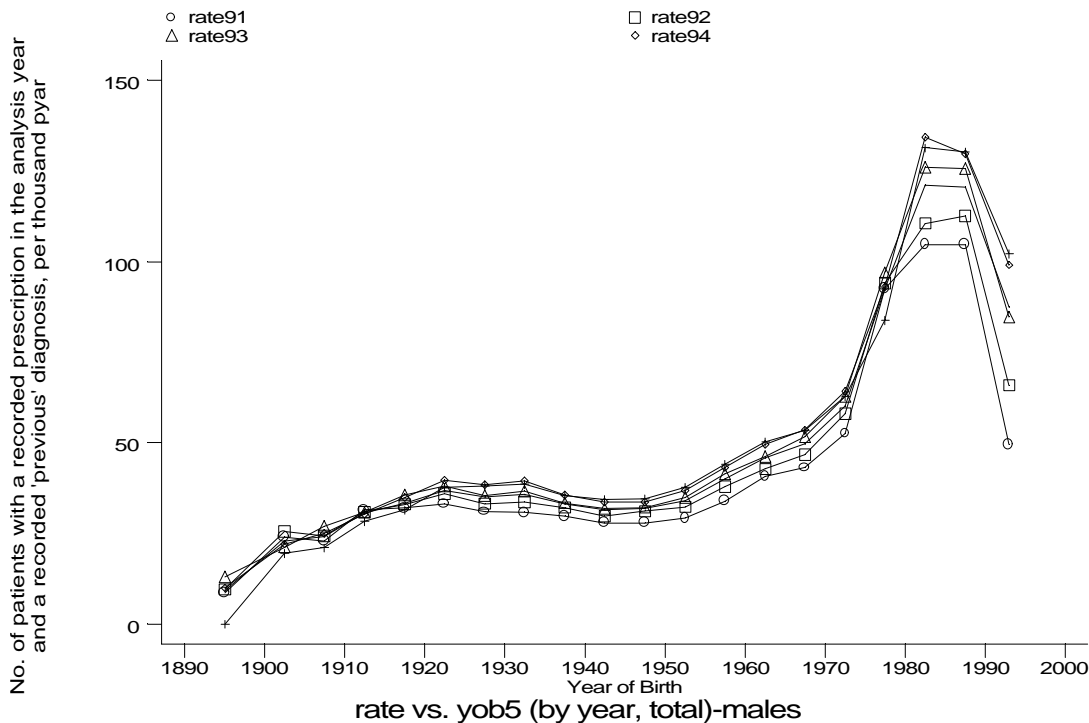
Age-sex distributions, yearly trends and cohort analysis (crude rates)

- GPRD Inhaler prescription and diagnosis of asthma, not COPD, England 1991-95



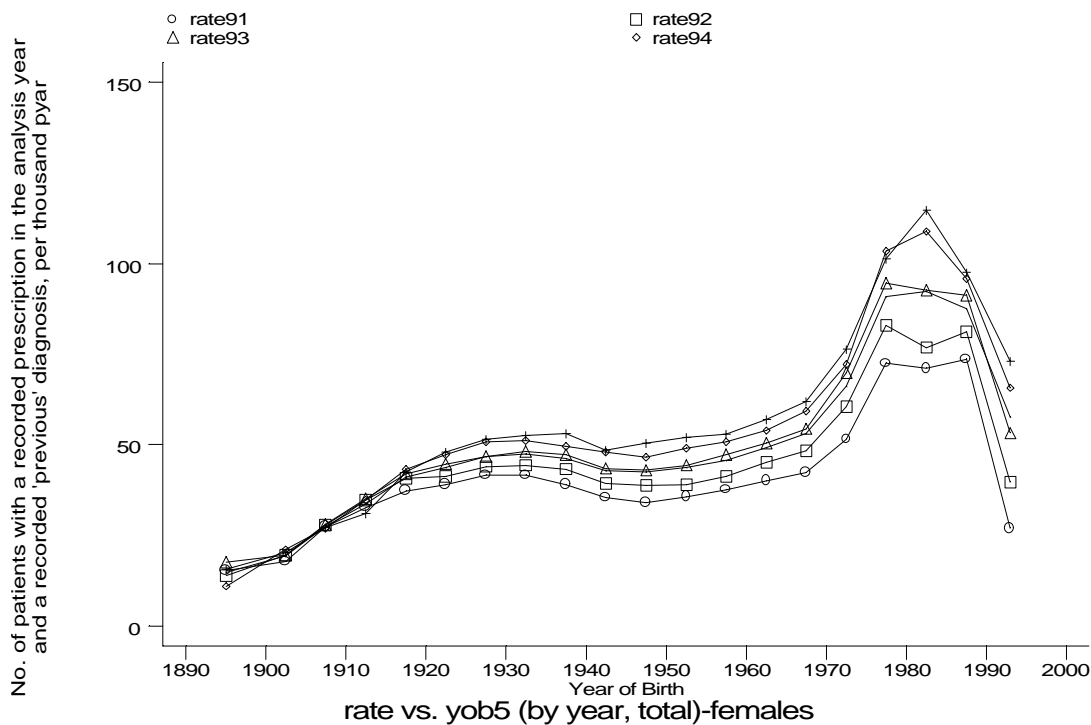
Age-sex distributions, yearly trends and cohort analysis (crude rates)

- GPRD Inhaler prescription and diagnosis of asthma, not COPD, England 1991-95

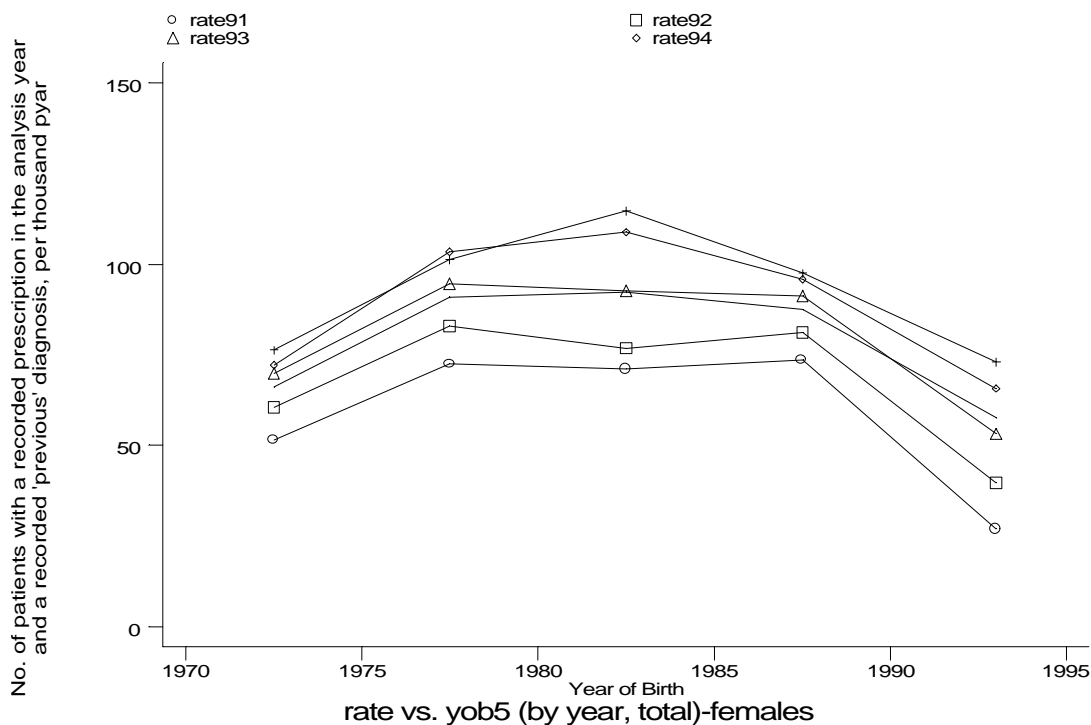


Age-sex distributions, yearly trends and cohort analysis (crude rates)

- GPRD Inhaler prescription and diagnosis of asthma, not COPD, England 1991-95



g1c8j1f.gph: FEMALES
8. 'Inhalers' + 'previous' diag of AS, not COPD



g1c8j2f.gph: FEMALES
8. 'Inhalers' + 'previous' diag of AS, not COPD