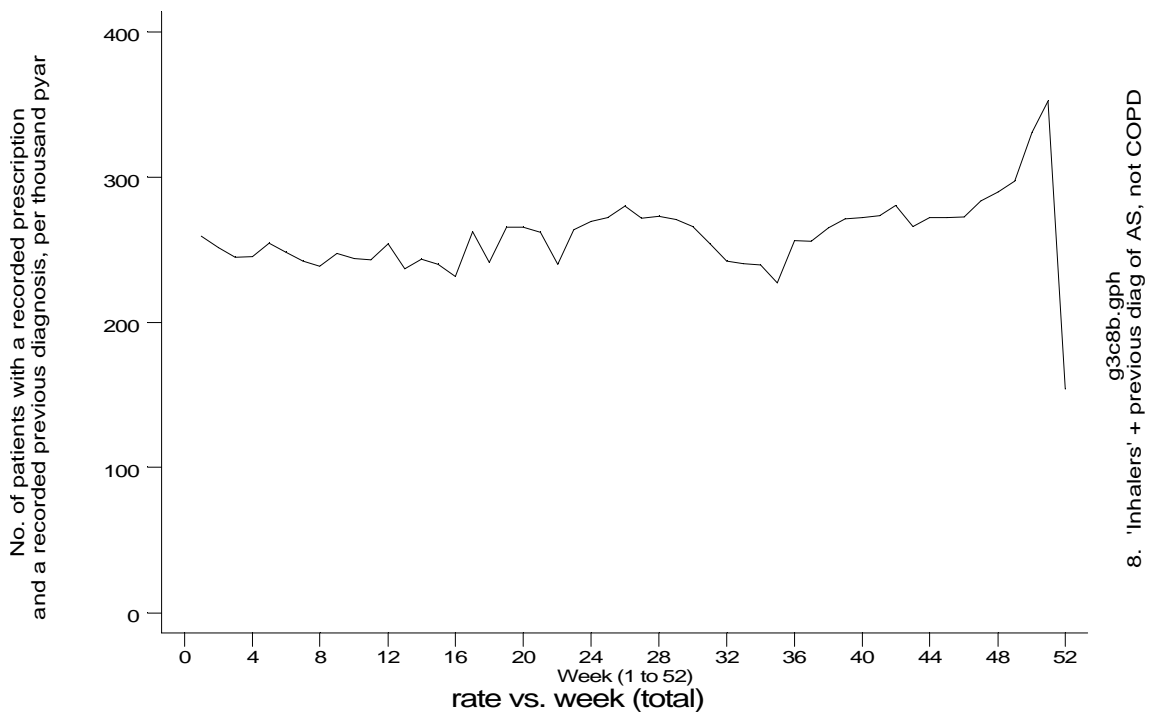
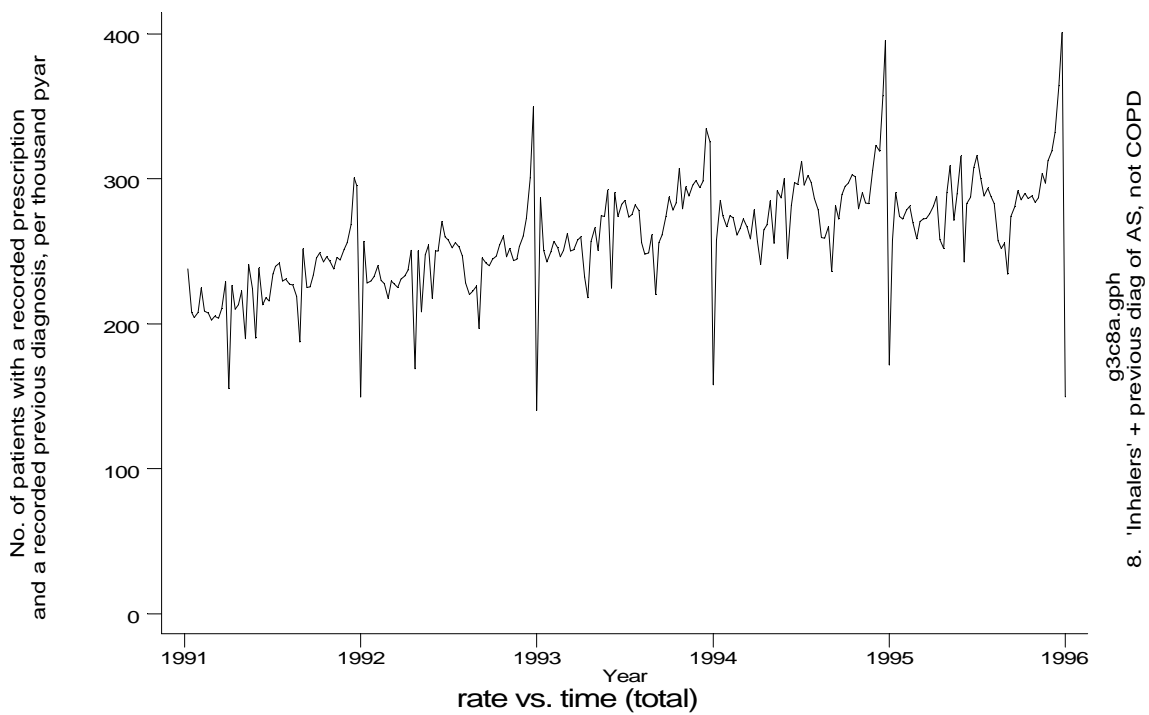


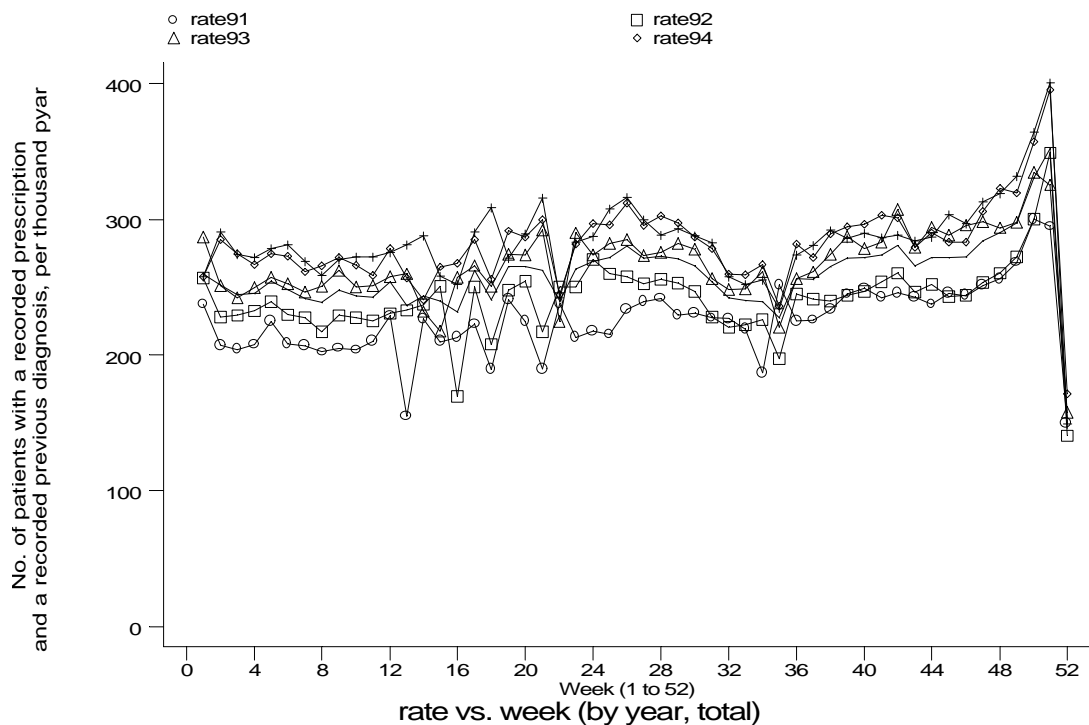
A6 Asthma standard output graphs
Seasonality (crude rates by week of year)

- GPRD Inhaler prescription and diagnosis of asthma, not COPD, England 1991-95



A6 Asthma standard output graphs
Seasonality (crude rates by week of year)

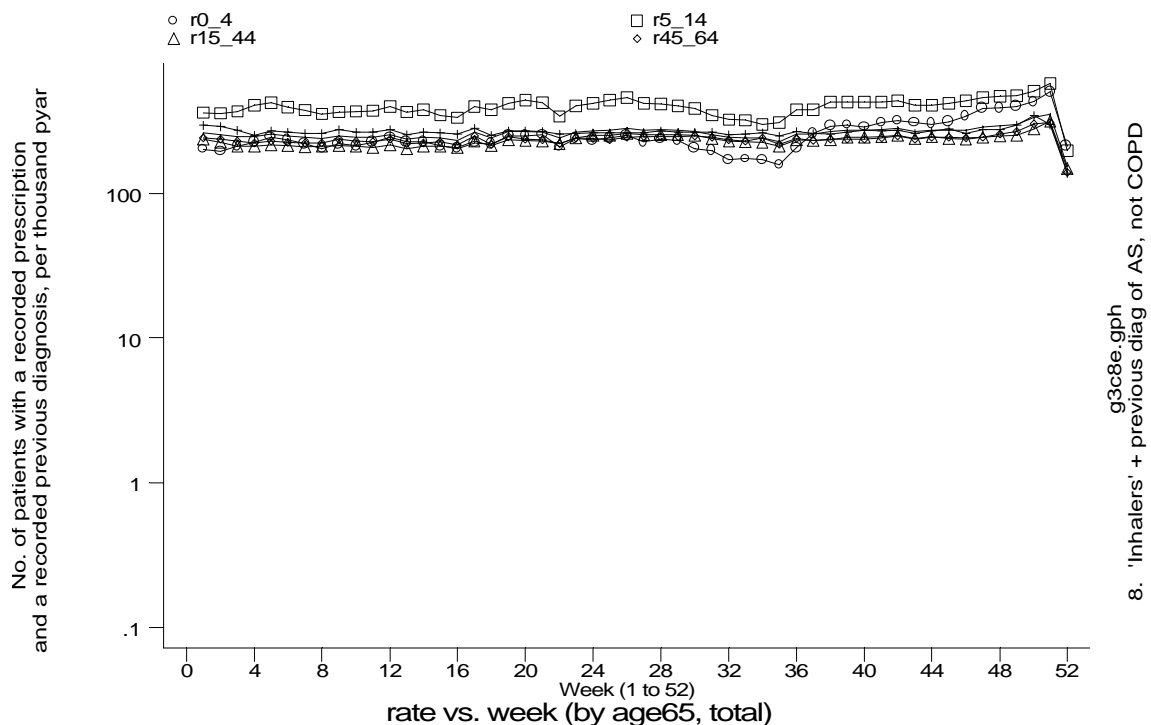
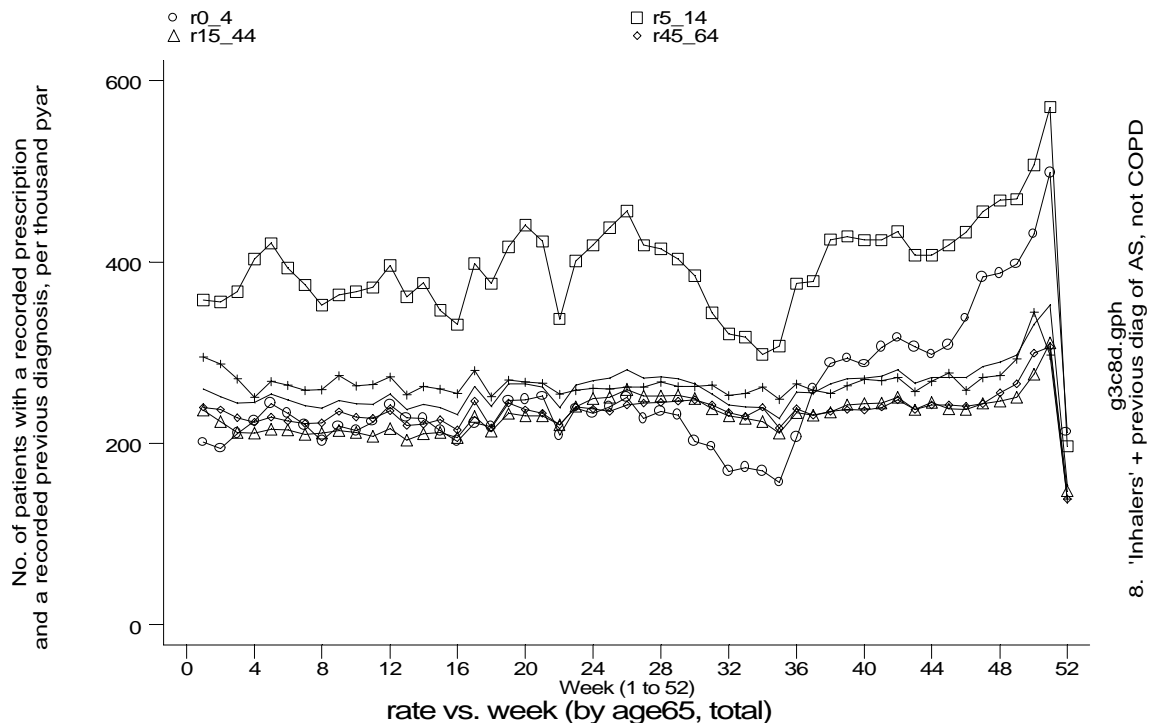
- GPRD Inhaler prescription and diagnosis of asthma, not COPD, England 1991-95



g3c8c.gph
8. 'Inhalers' + previous diag of AS, not COPD

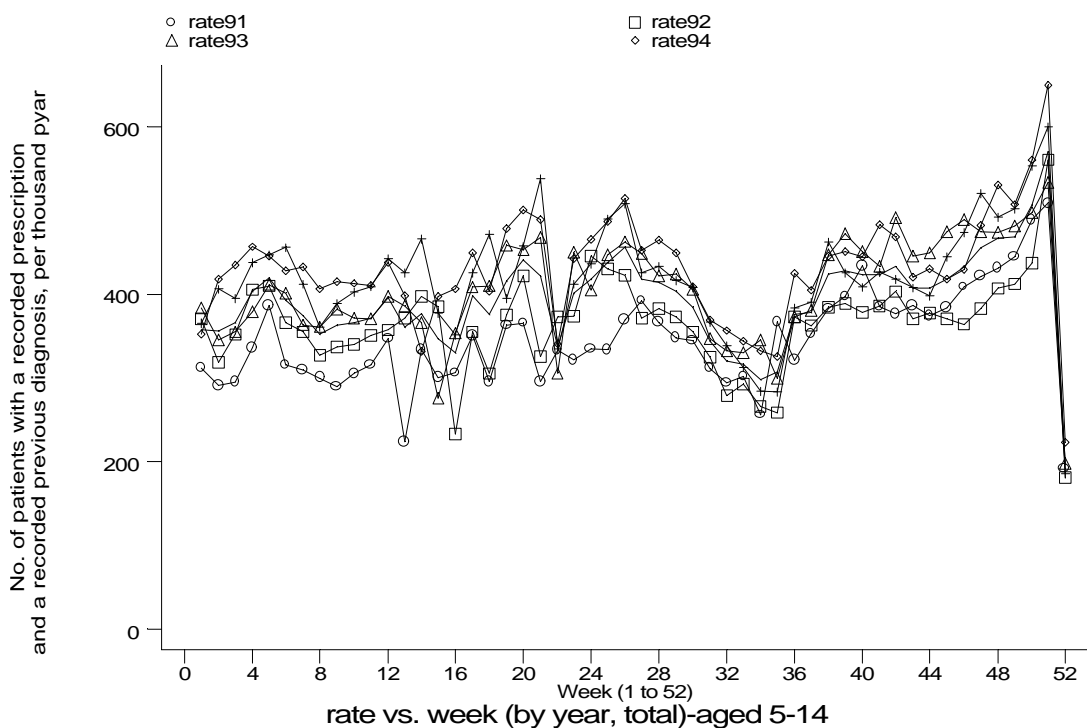
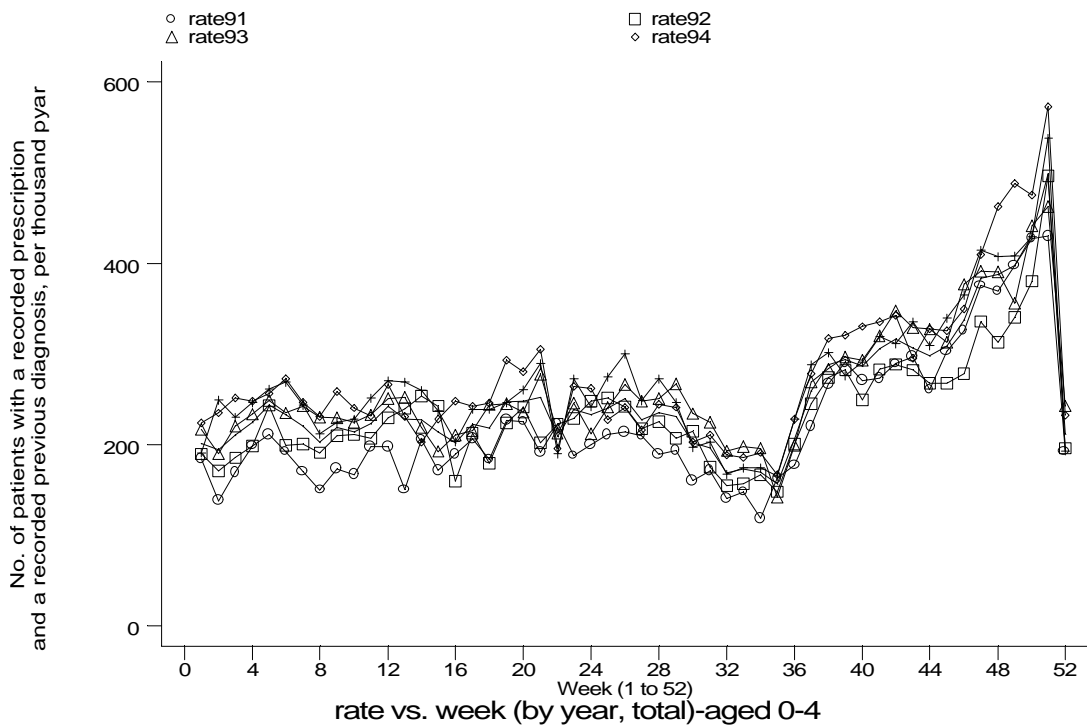
A6 Asthma standard output graphs
Seasonality (crude rates by week of year)

- GPRD Inhaler prescription and diagnosis of asthma, not COPD, England 1991-95



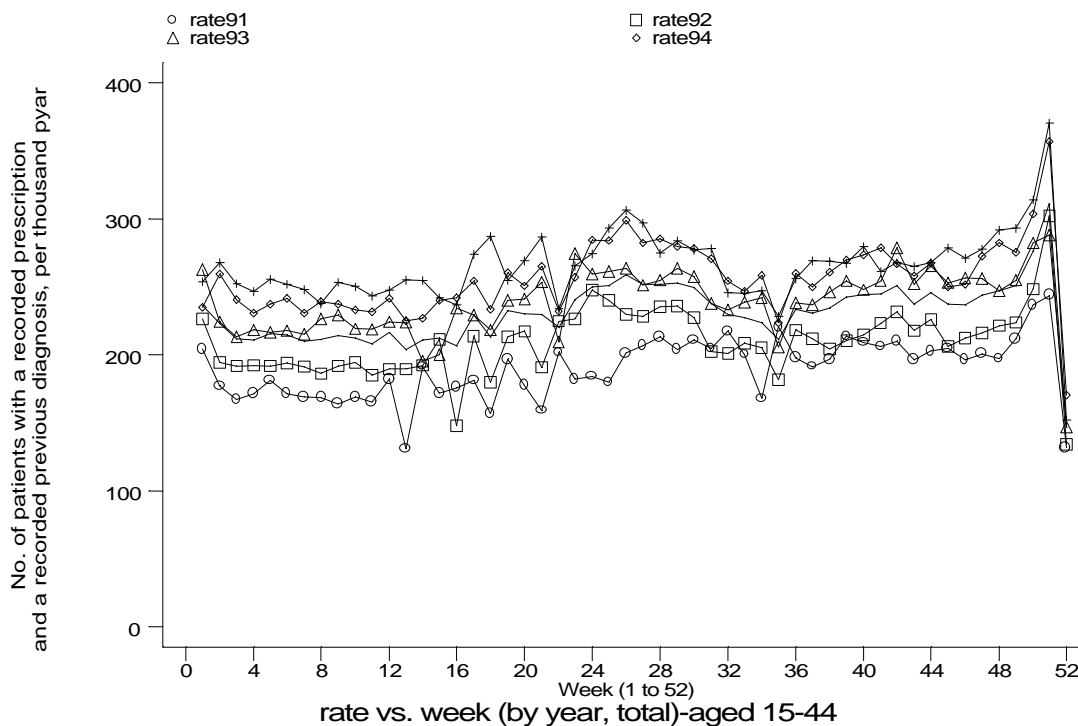
A6 Asthma standard output graphs
Seasonality (crude rates by week of year)

- GPRD Inhaler prescription and diagnosis of asthma, not COPD, England 1991-95

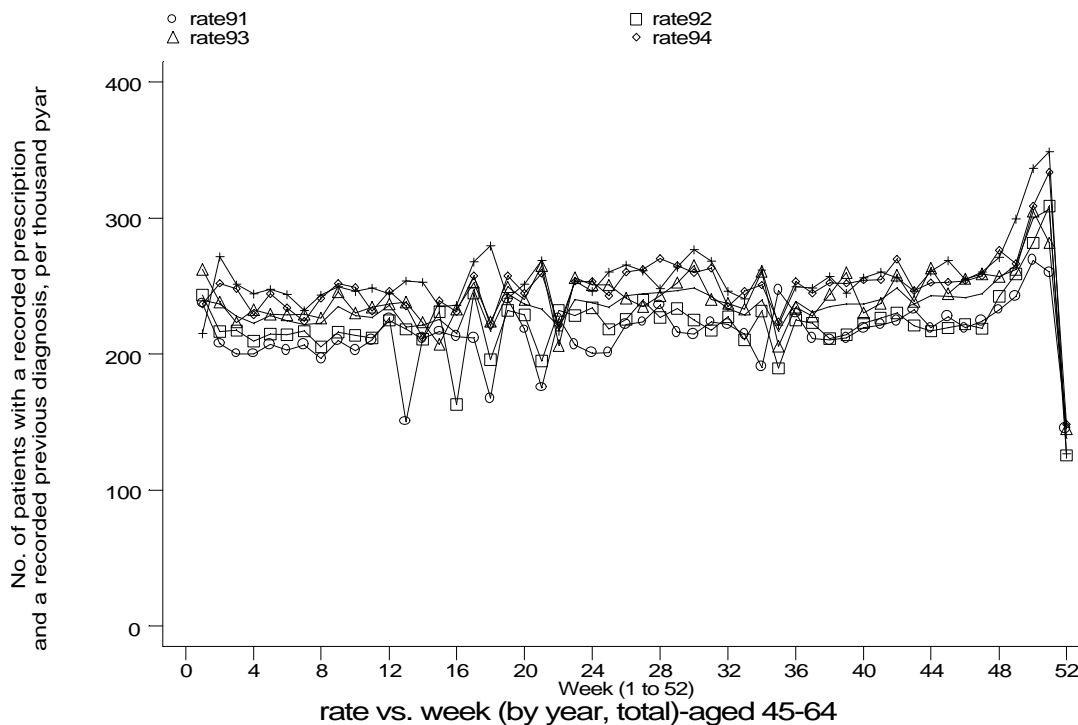


A6 Asthma standard output graphs
Seasonality (crude rates by week of year)

- GPRD Inhaler prescription and diagnosis of asthma, not COPD, England 1991-95



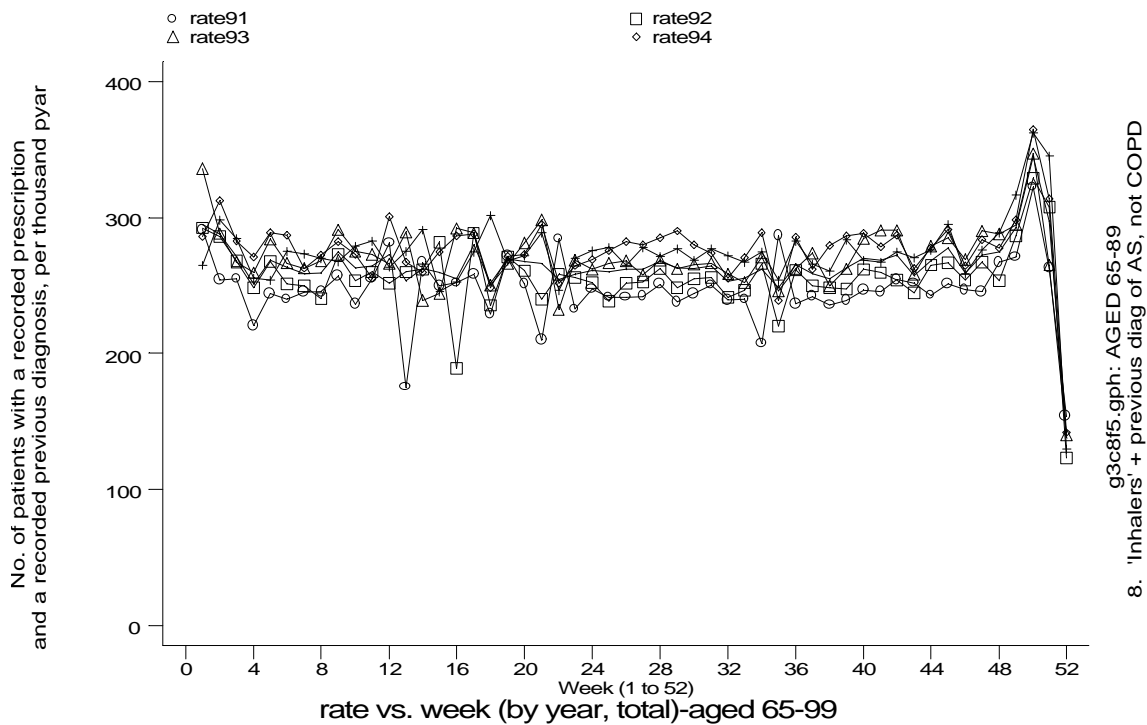
g3c8f3.gph: AGED 15-44
8. 'Inhalers' + previous diag of AS, not COPD



g3c8f4.gph: AGED 45-64
8. 'Inhalers' + previous diag of AS, not COPD

A6 Asthma standard output graphs
Seasonality (crude rates by week of year)

- GPRD Inhaler prescription and diagnosis of asthma, not COPD, England 1991-95



g3c8f5.gph: AGED 65-89
8. 'Inhalers' + previous diag of AS, not COPD