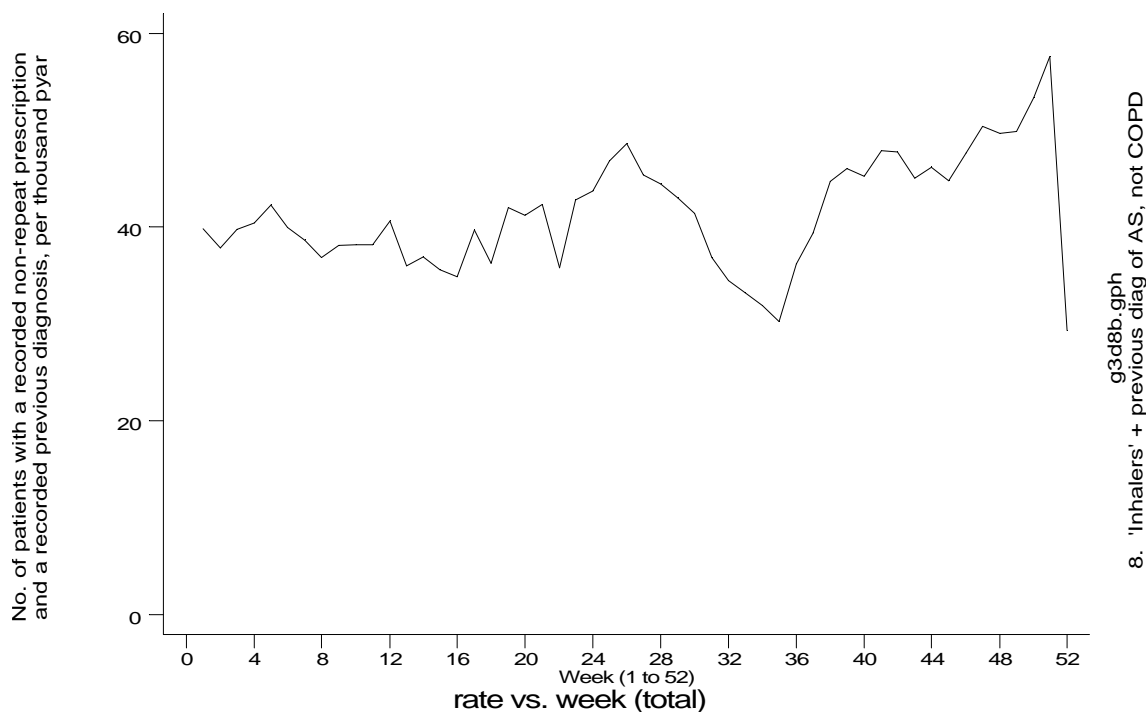
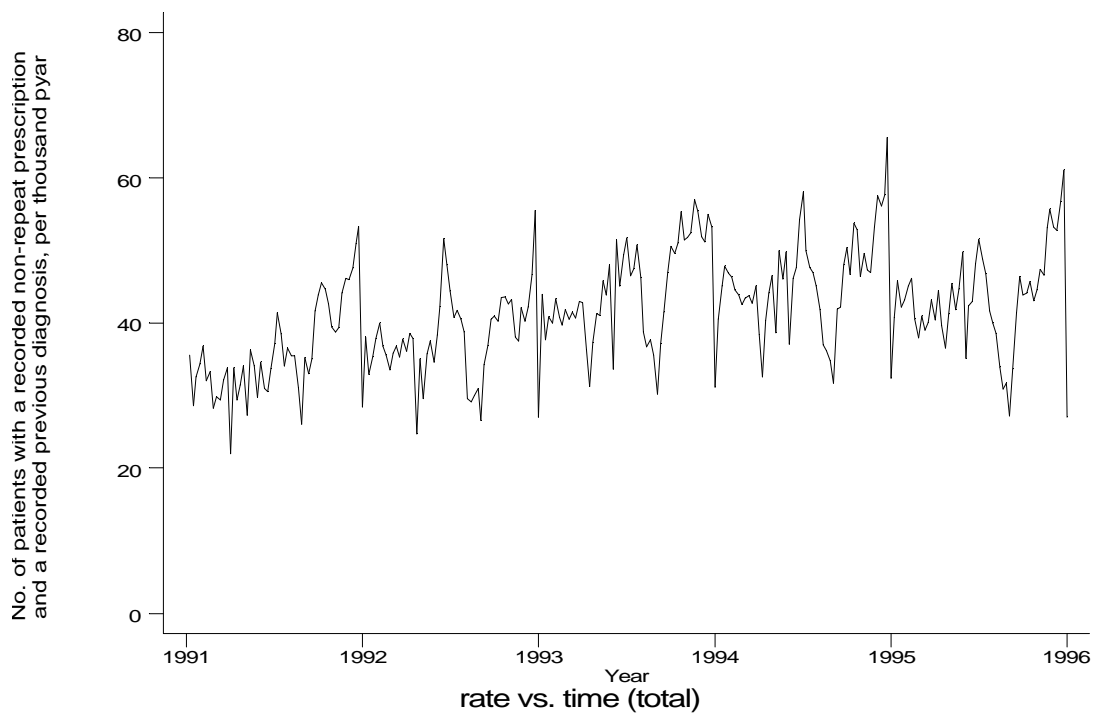


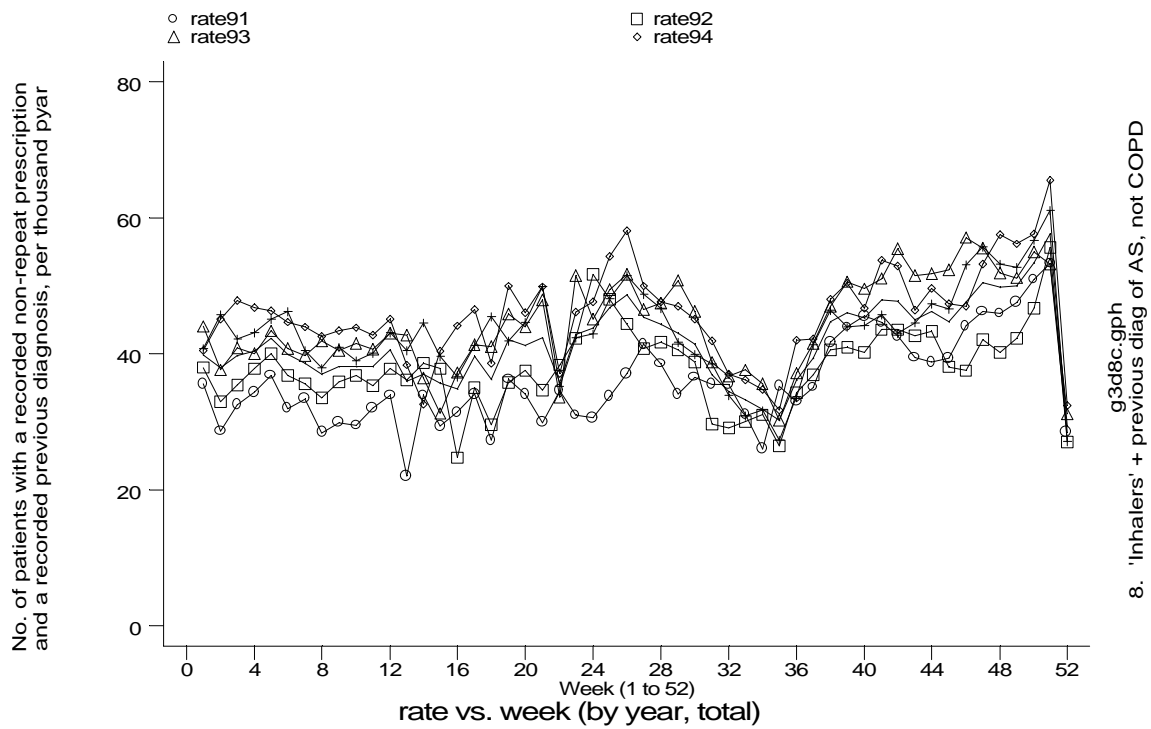
**A6 Asthma standard output graphs**  
**Seasonality (crude rates by week of year)**

- GPRD Non-repeat inhaler prescription and diagnosis of asthma, not COPD, England 1991-95



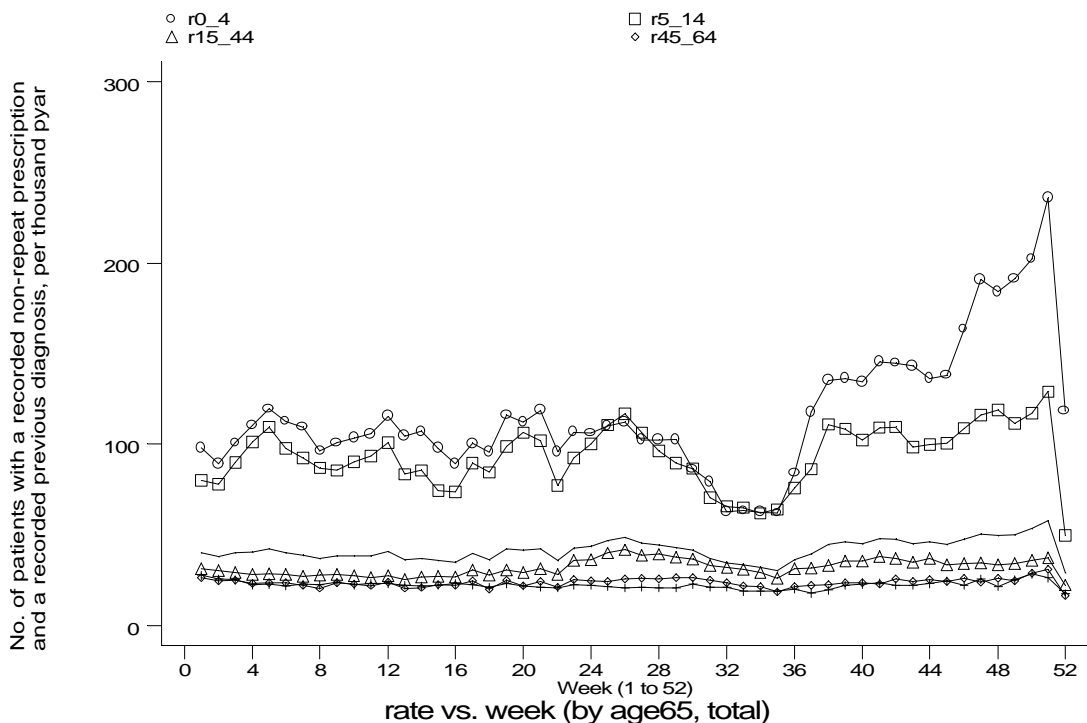
**A6 Asthma standard output graphs**  
**Seasonality (crude rates by week of year)**

- GPRD Non-repeat inhaler prescription and diagnosis of asthma, not COPD, England 1991-95

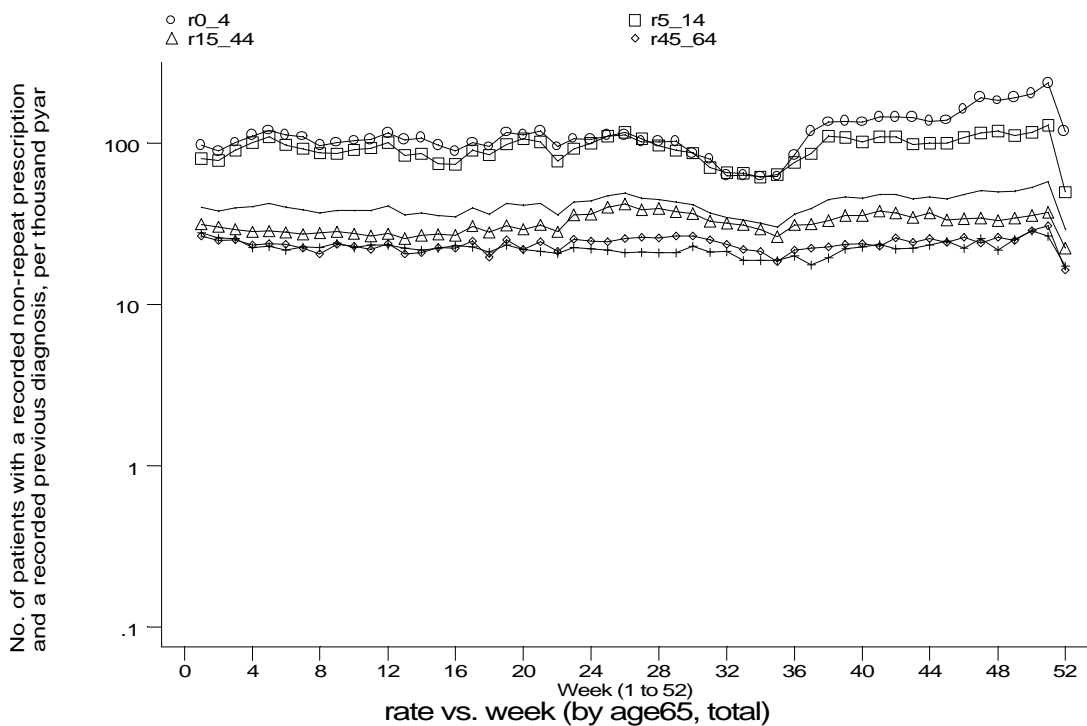


**A6 Asthma standard output graphs**  
**Seasonality (crude rates by week of year)**

- GPRD Non-repeat inhaler prescription and diagnosis of asthma, not COPD, England 1991-95



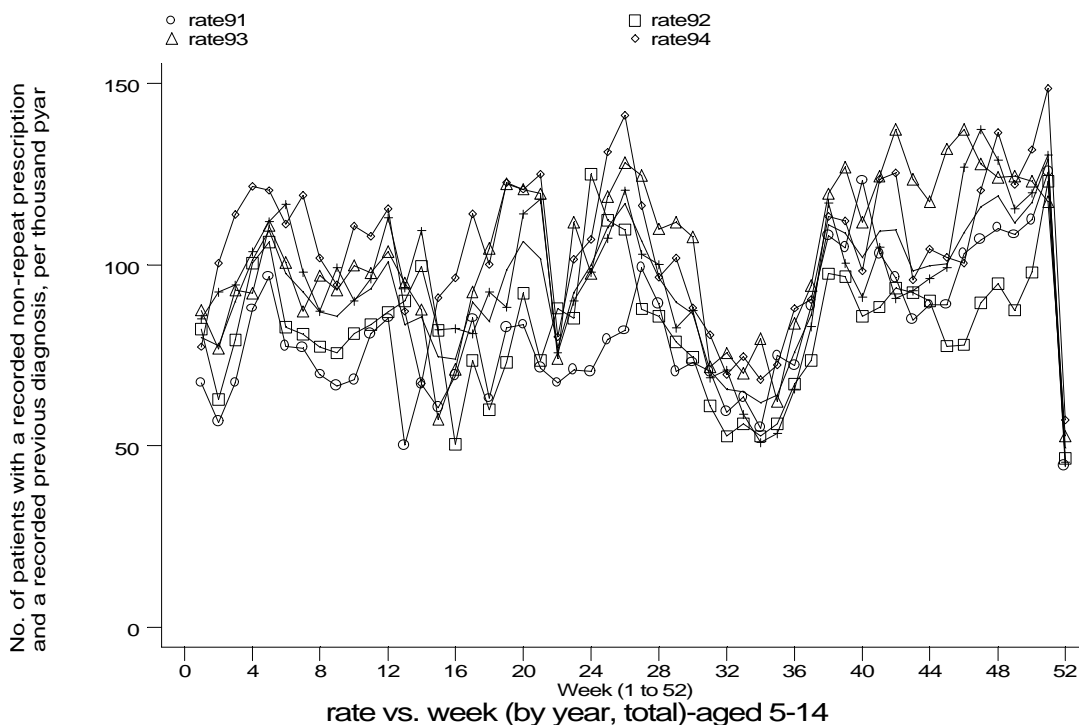
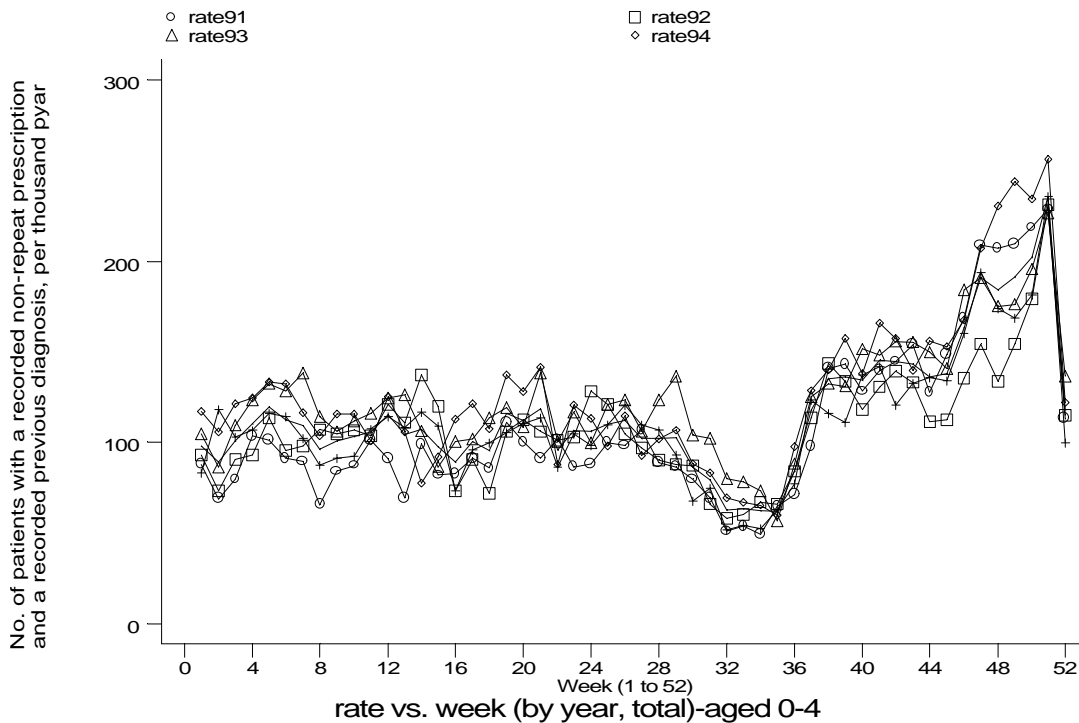
g3d8d.gph  
 8. 'Inhalers' + previous diag of AS, not COPD



g3d8e.gph  
 8. 'Inhalers' + previous diag of AS, not COPD

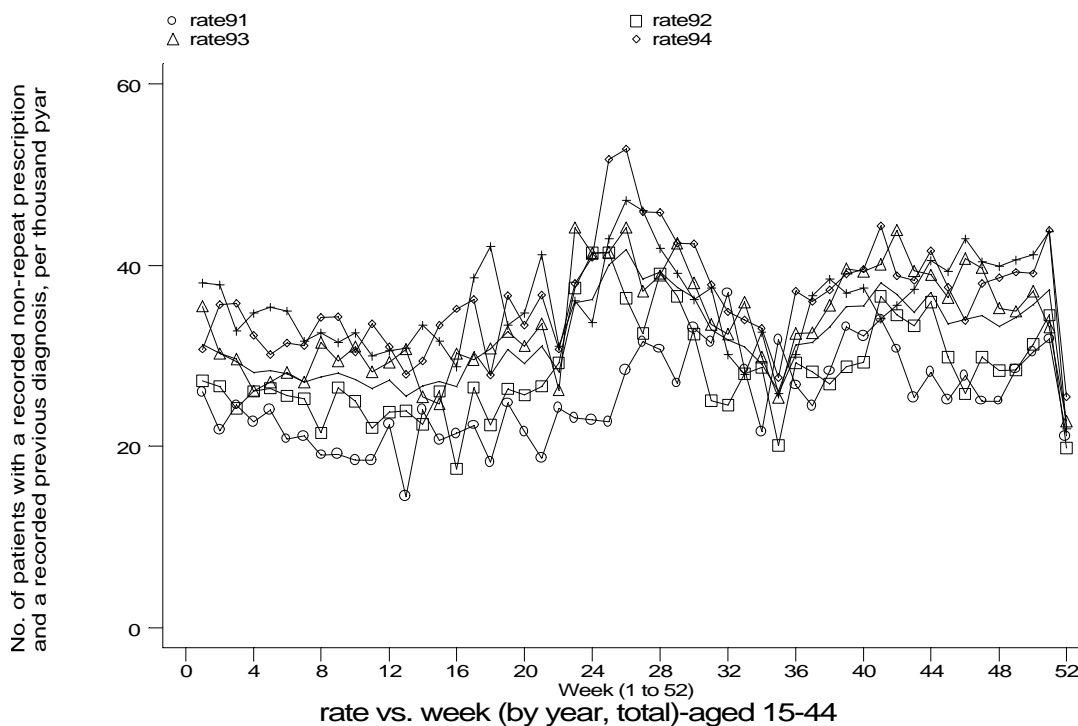
**A6 Asthma standard output graphs**  
**Seasonality (crude rates by week of year)**

- GPRD Non-repeat inhaler prescription and diagnosis of asthma, not COPD, England 1991-95

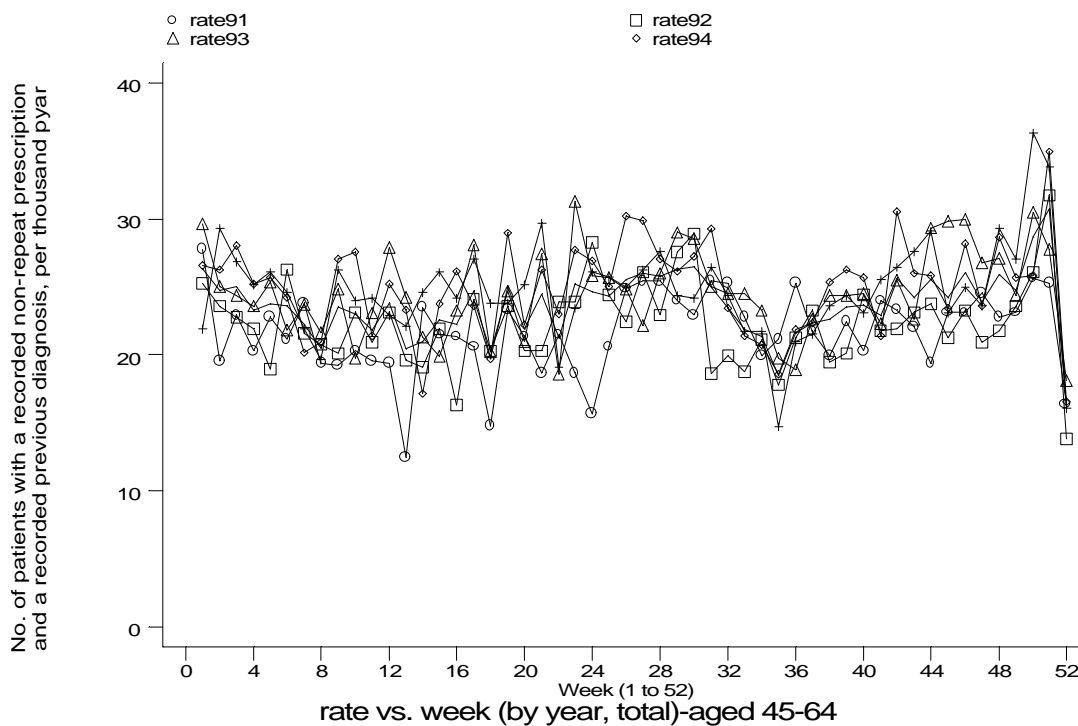


**A6 Asthma standard output graphs**  
**Seasonality (crude rates by week of year)**

- GPRD Non-repeat inhaler prescription and diagnosis of asthma, not COPD, England 1991-95



g3d8f3.gph: AGED 15-44  
 8. 'Inhalers' + previous diag of AS, not COPD



g3d8f4.gph: AGED 45-64  
 8. 'Inhalers' + previous diag of AS, not COPD

# A6 Asthma standard output graphs

## Seasonality (crude rates by week of year)

- GPRD Non-repeat inhaler prescription and diagnosis of asthma, not COPD, England 1991-95

