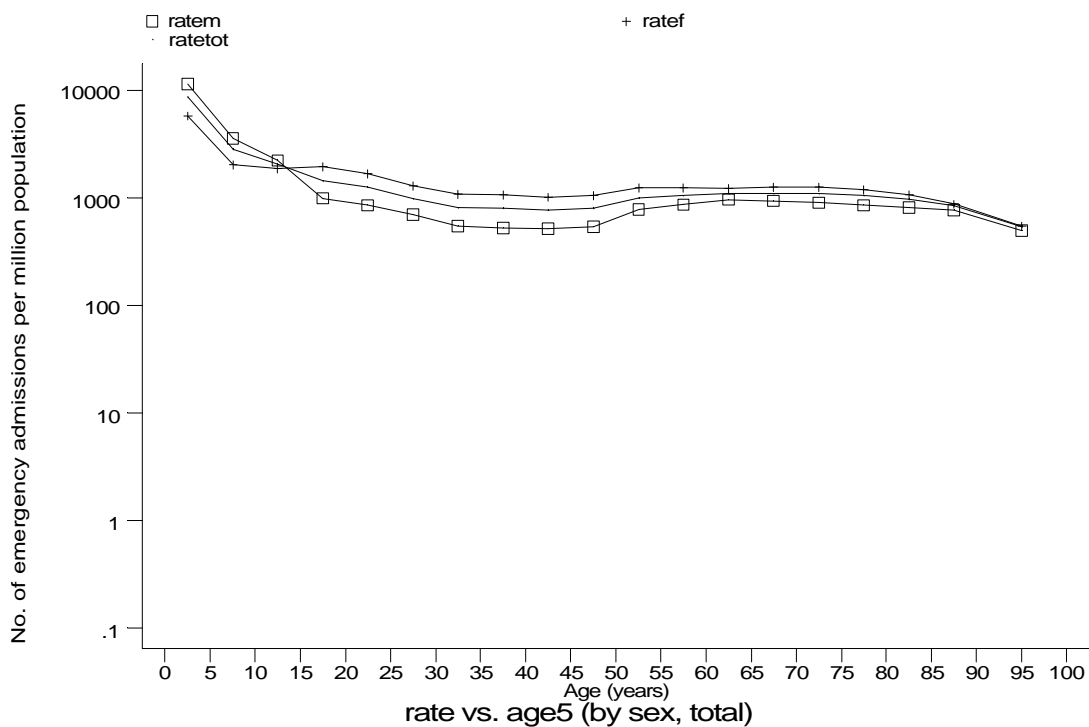
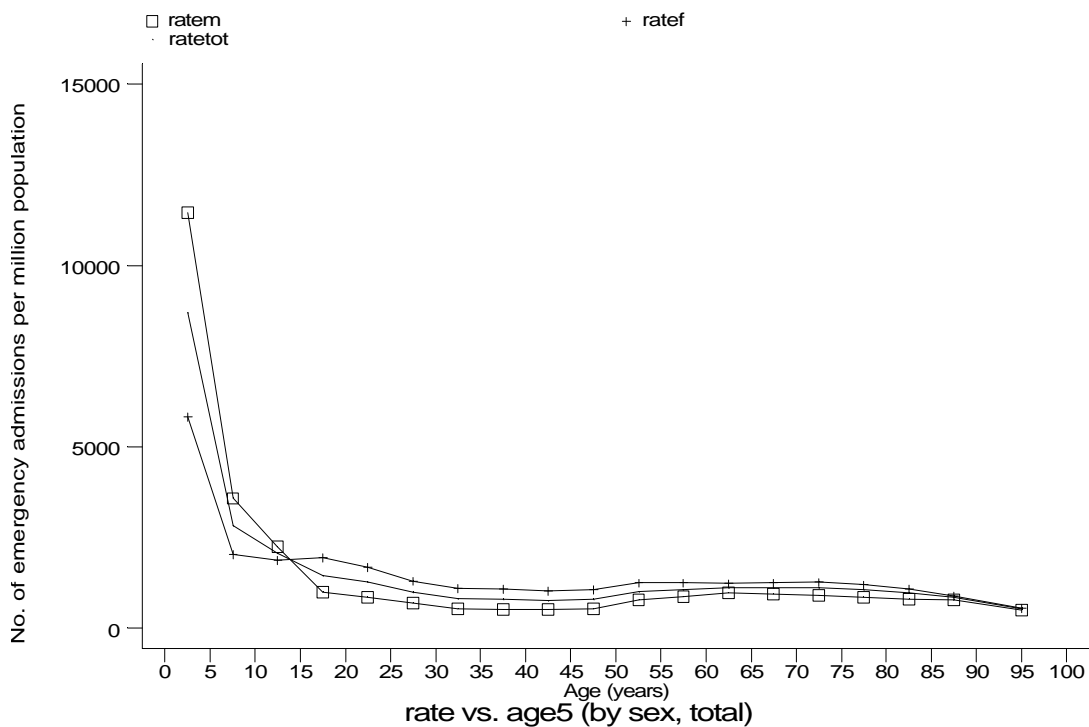


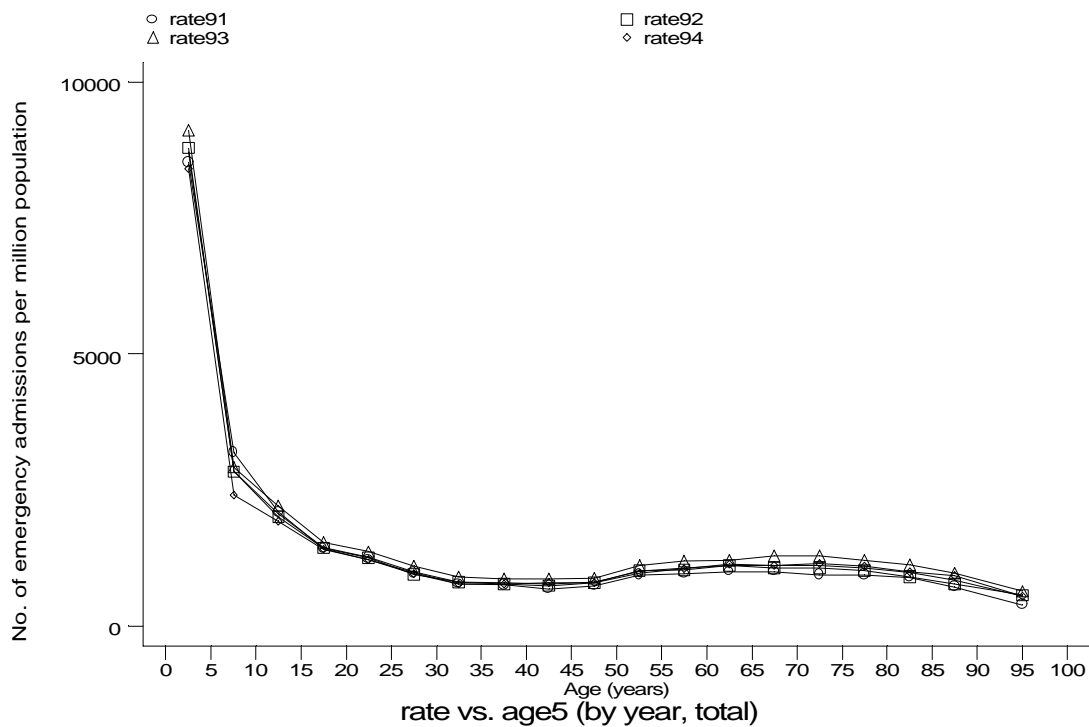
Age-sex distributions, yearly trends and cohort analysis (crude rates)

- HES Emergency admissions, England 1991-94

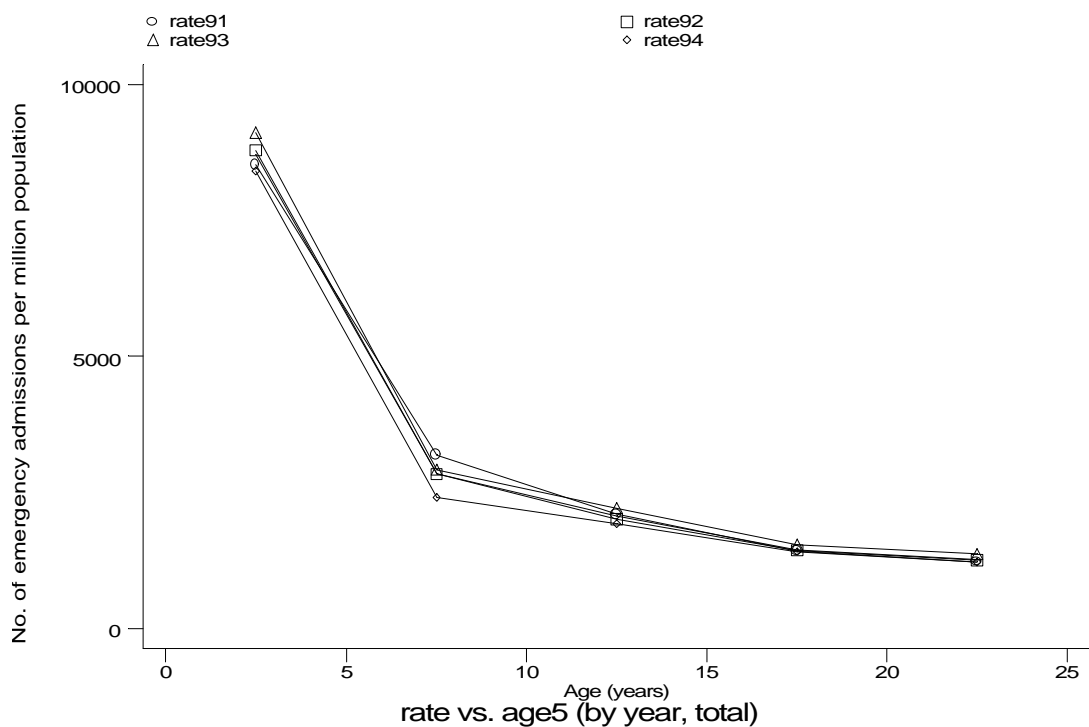


Age-sex distributions, yearly trends and cohort analysis (crude rates)

- HES Emergency admissions, England 1991-94



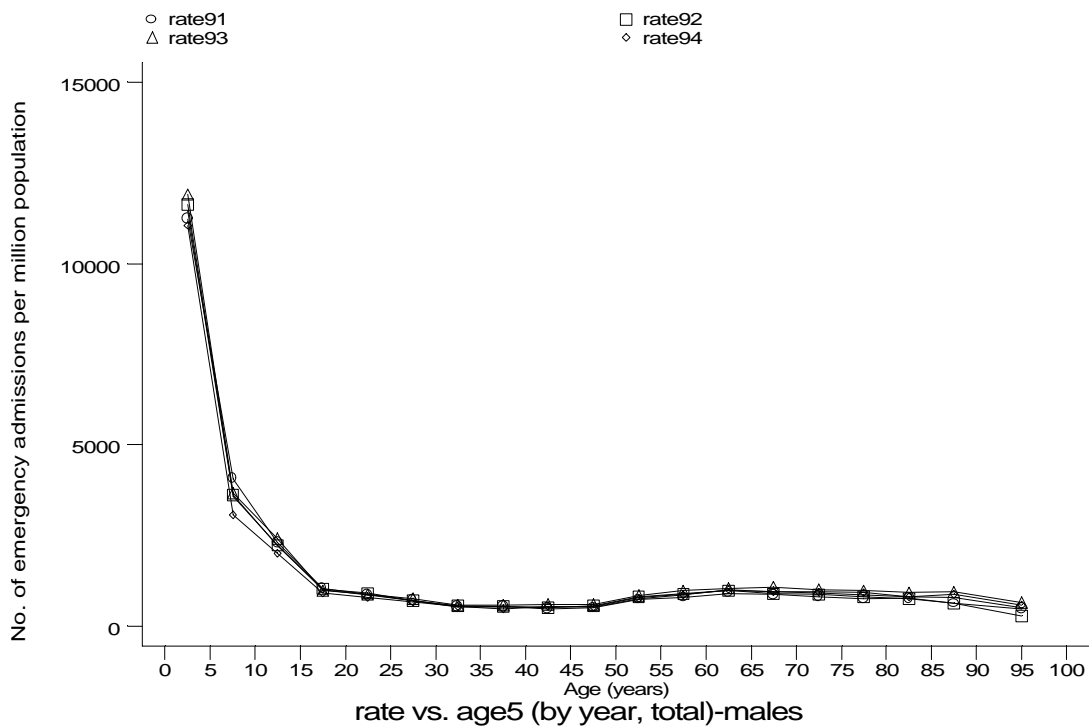
h1e1b1.gph
1. Asthma



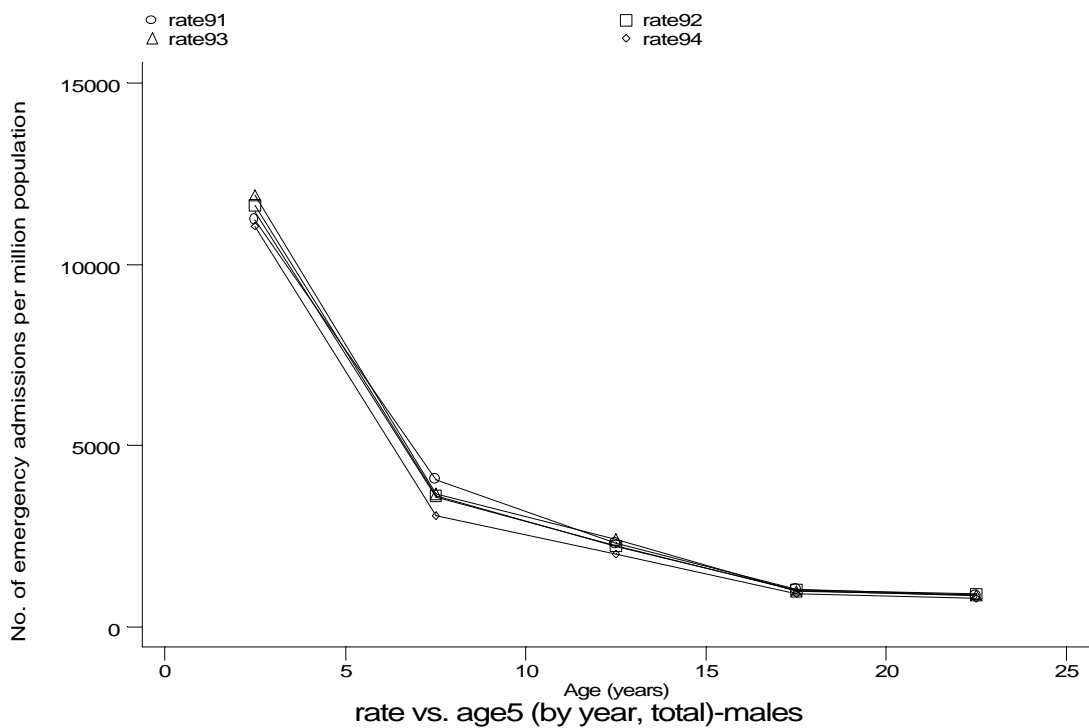
h1e1b2.gph
1. Asthma

Age-sex distributions, yearly trends and cohort analysis (crude rates)

- HES Emergency admissions, England 1991-94



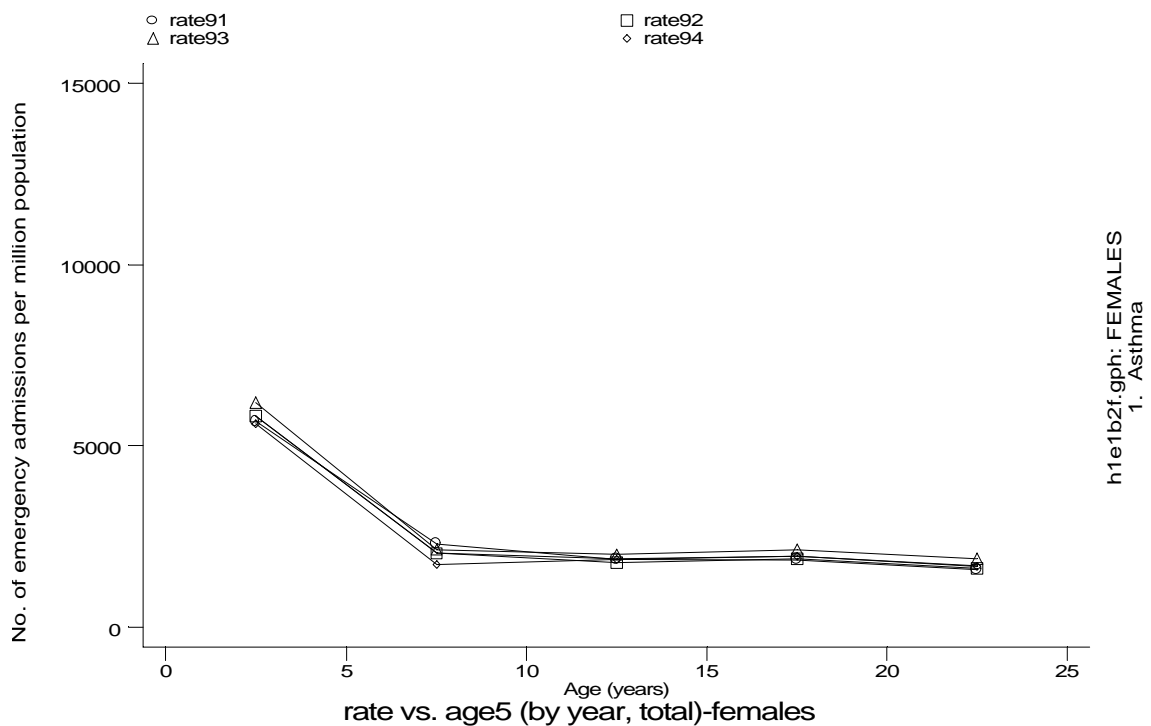
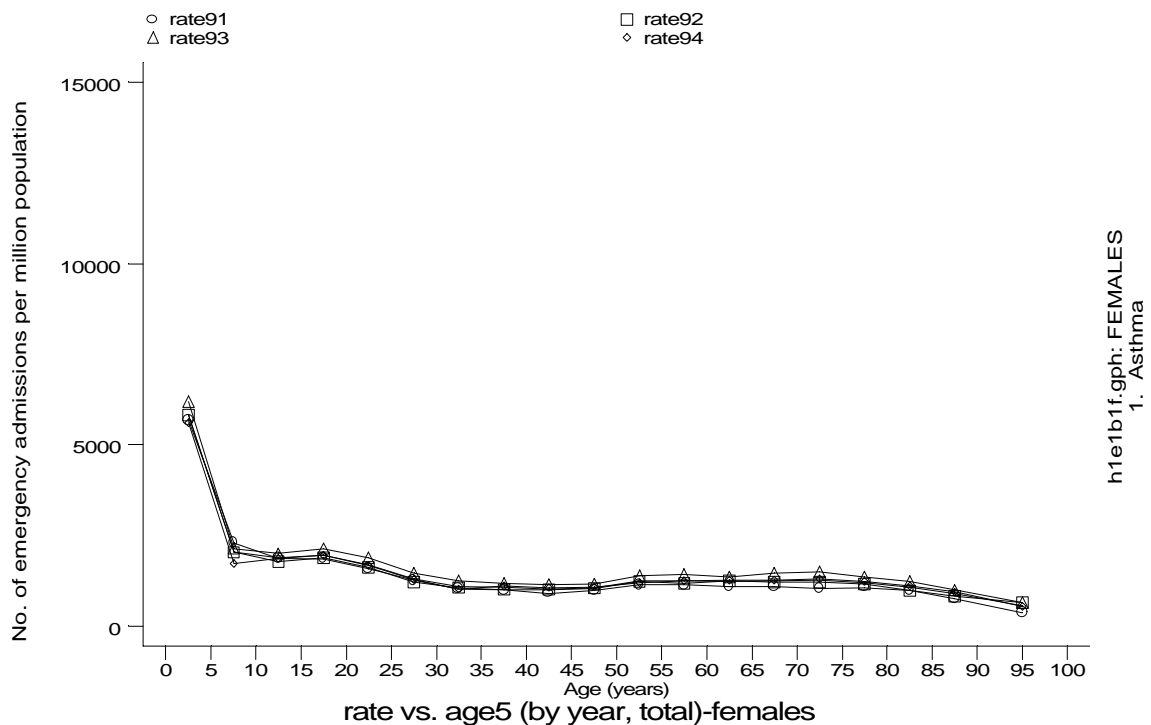
h1e1b1m.gph: MALES
1. Asthma



h1e1b2m.gph: MALES
1. Asthma

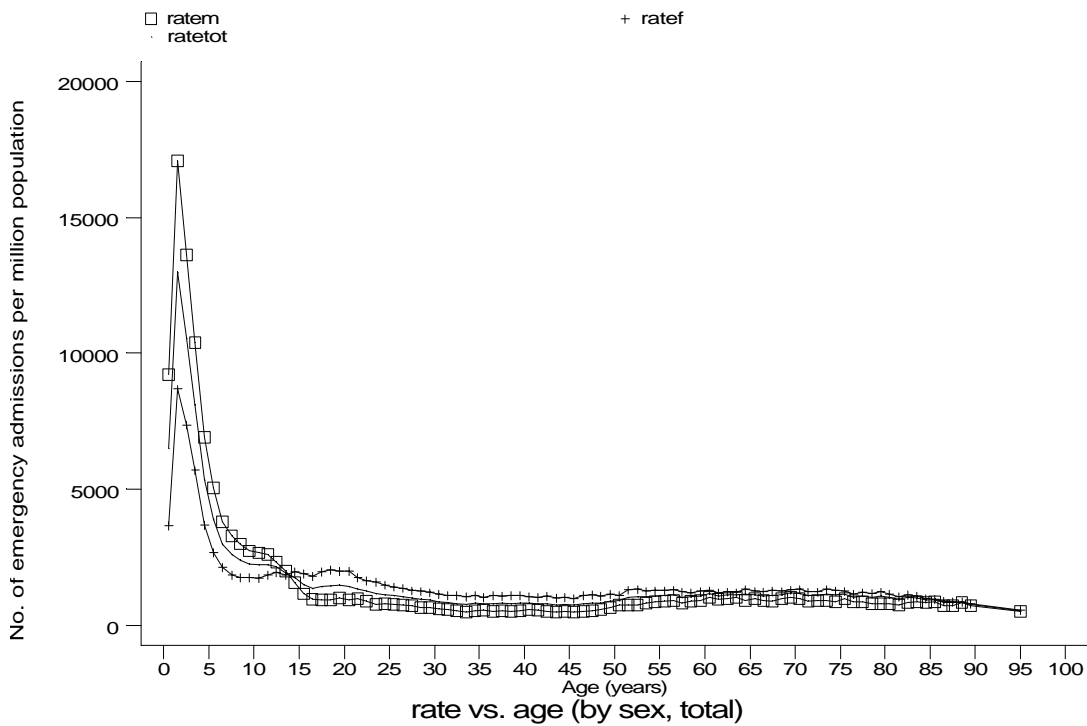
Age-sex distributions, yearly trends and cohort analysis (crude rates)

- HES Emergency admissions, England 1991-94

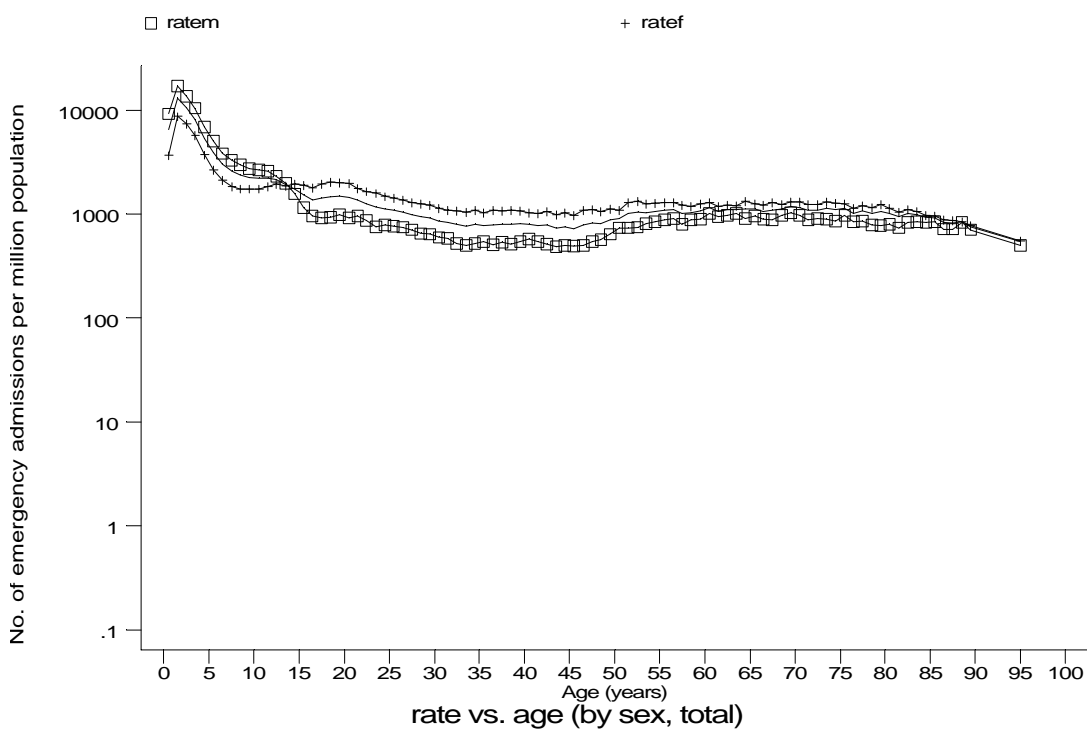


Age-sex distributions, yearly trends and cohort analysis (crude rates)

- HES Emergency admissions, England 1991-94



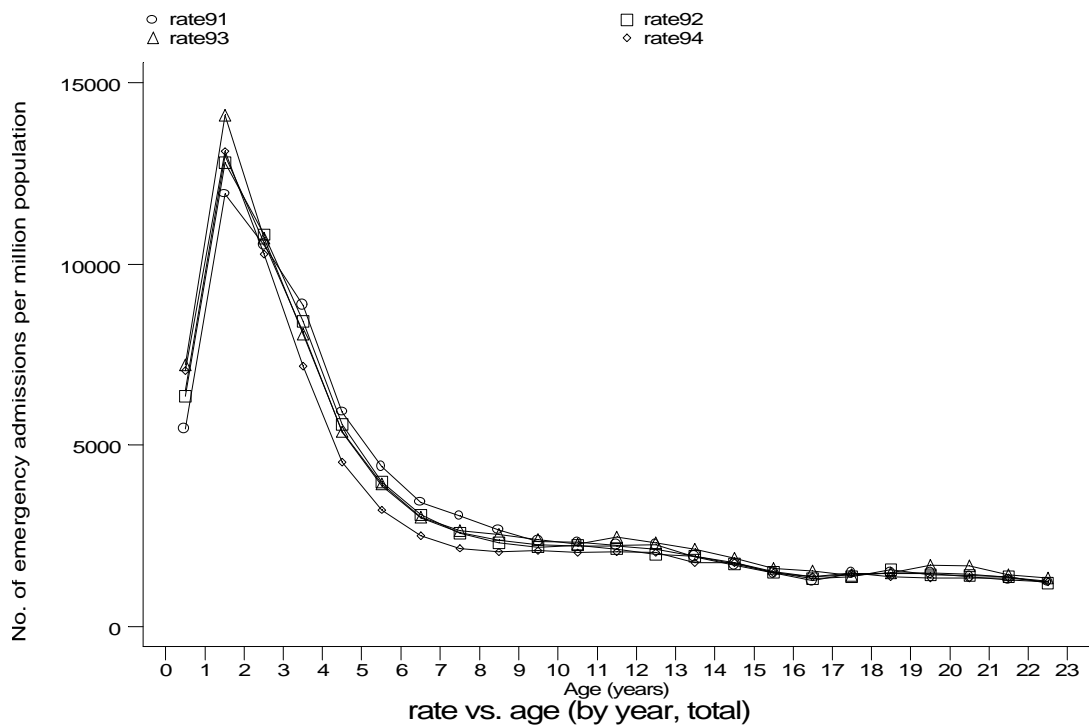
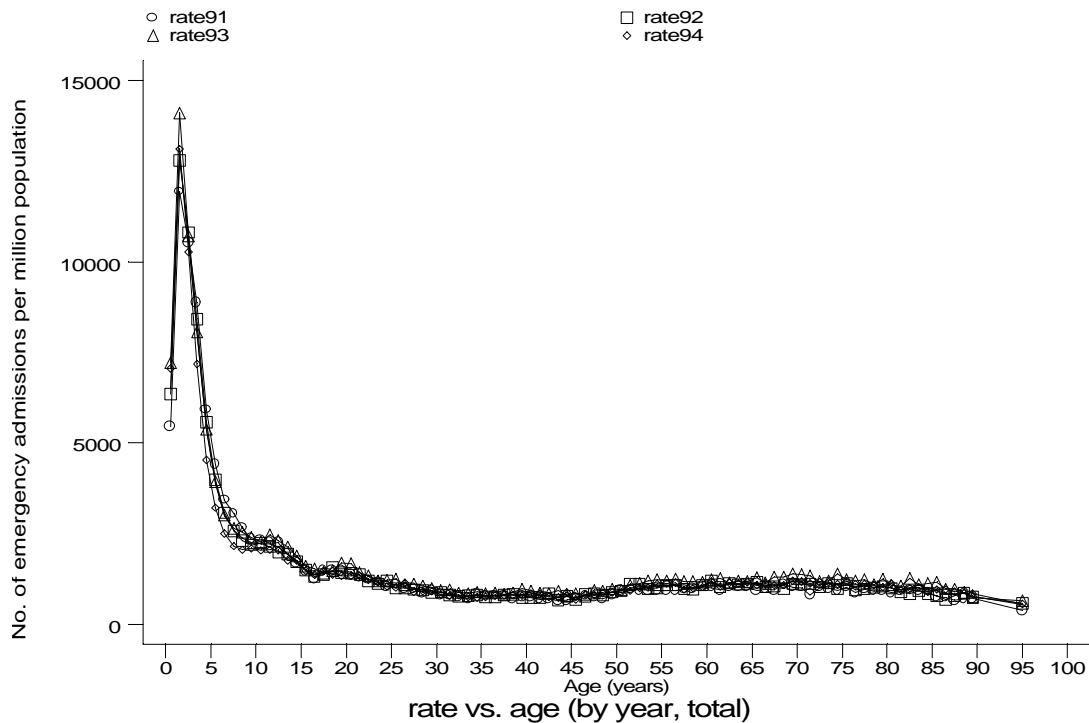
h1e1c1.gph
1. Asthma



h1e1c2.gph
1. Asthma

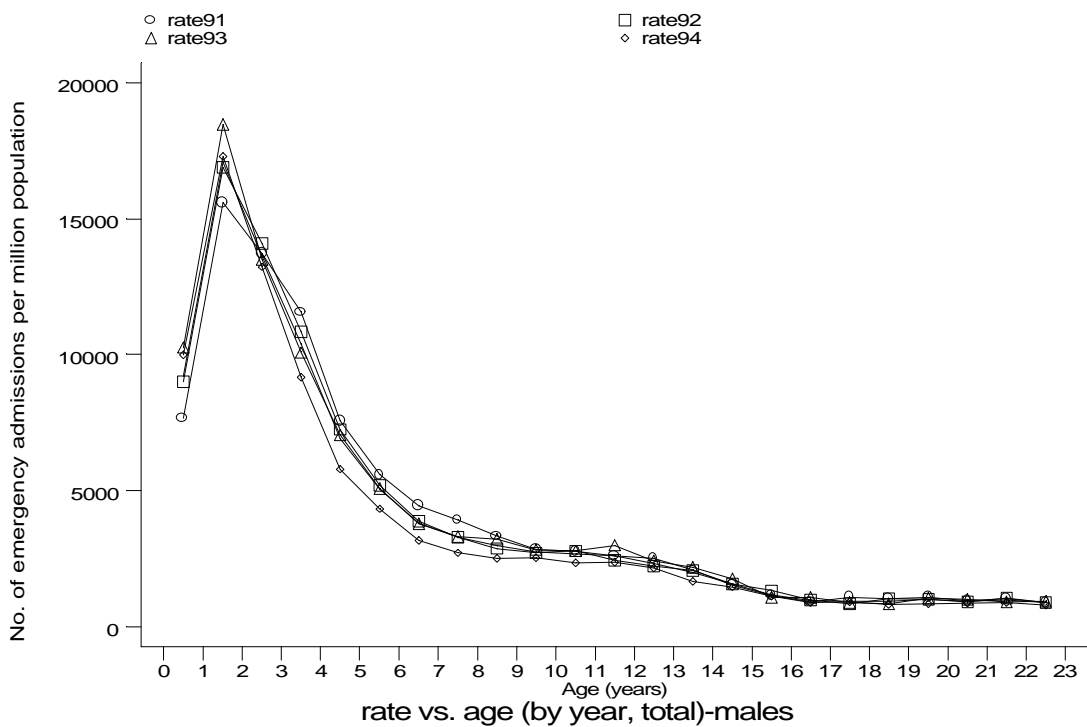
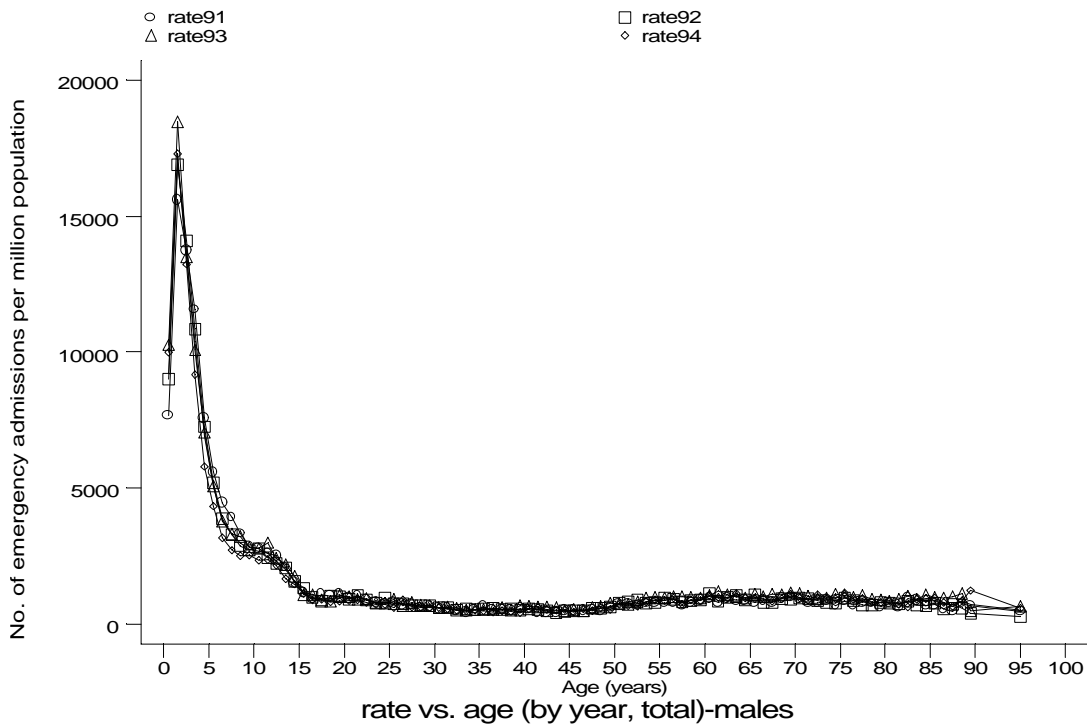
Age-sex distributions, yearly trends and cohort analysis (crude rates)

- HES Emergency admissions, England 1991-94



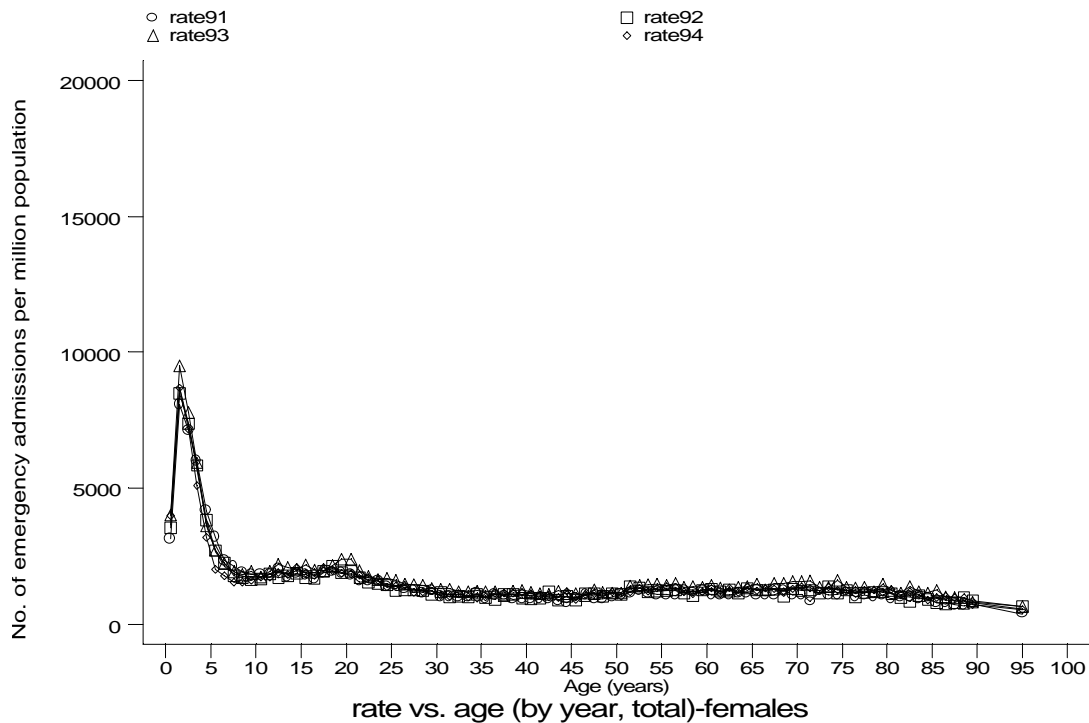
Age-sex distributions, yearly trends and cohort analysis (crude rates)

- HES Emergency admissions, England 1991-94

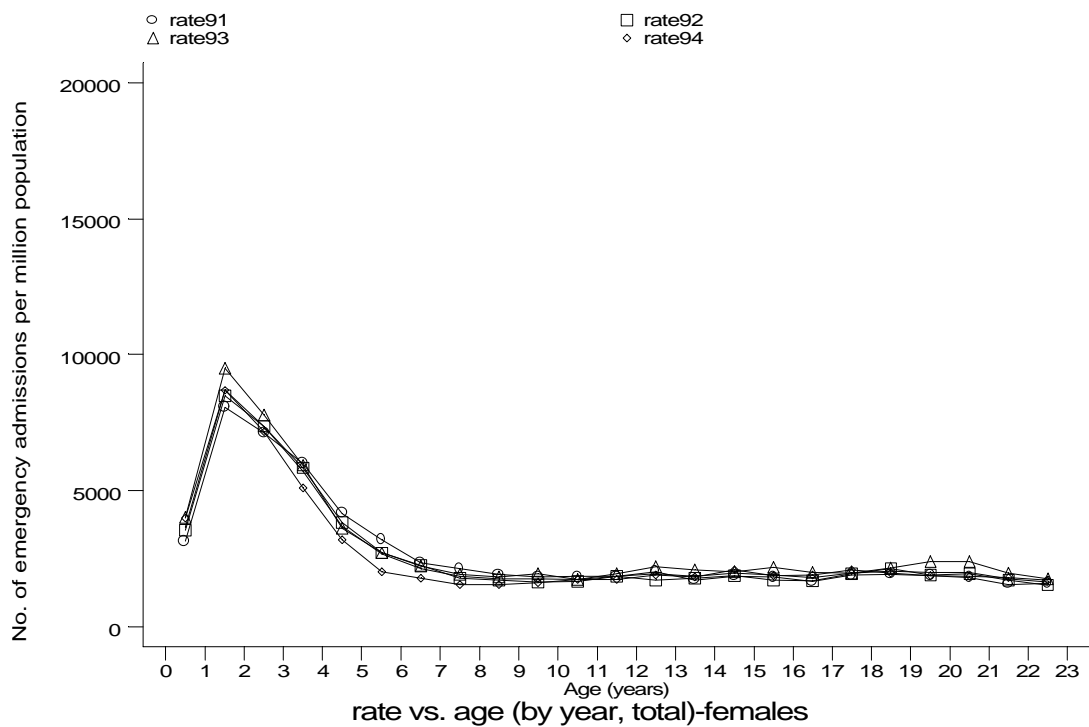


Age-sex distributions, yearly trends and cohort analysis (crude rates)

- HES Emergency admissions, England 1991-94



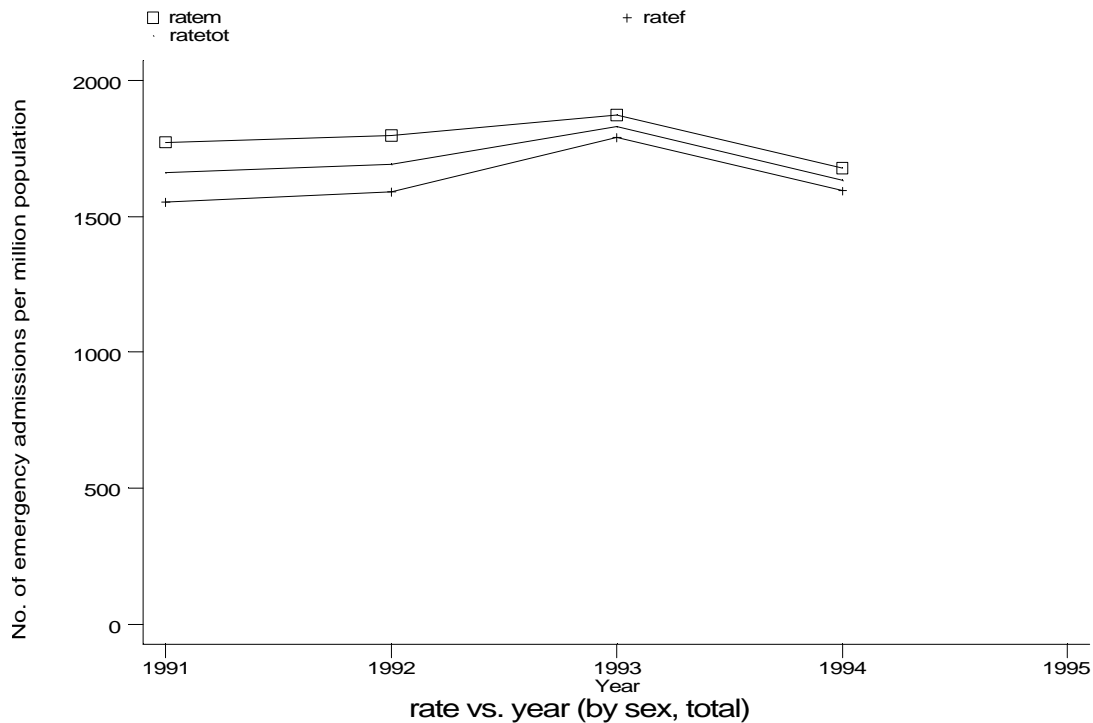
h1e1d1f.gph: FEMALES
1. Asthma



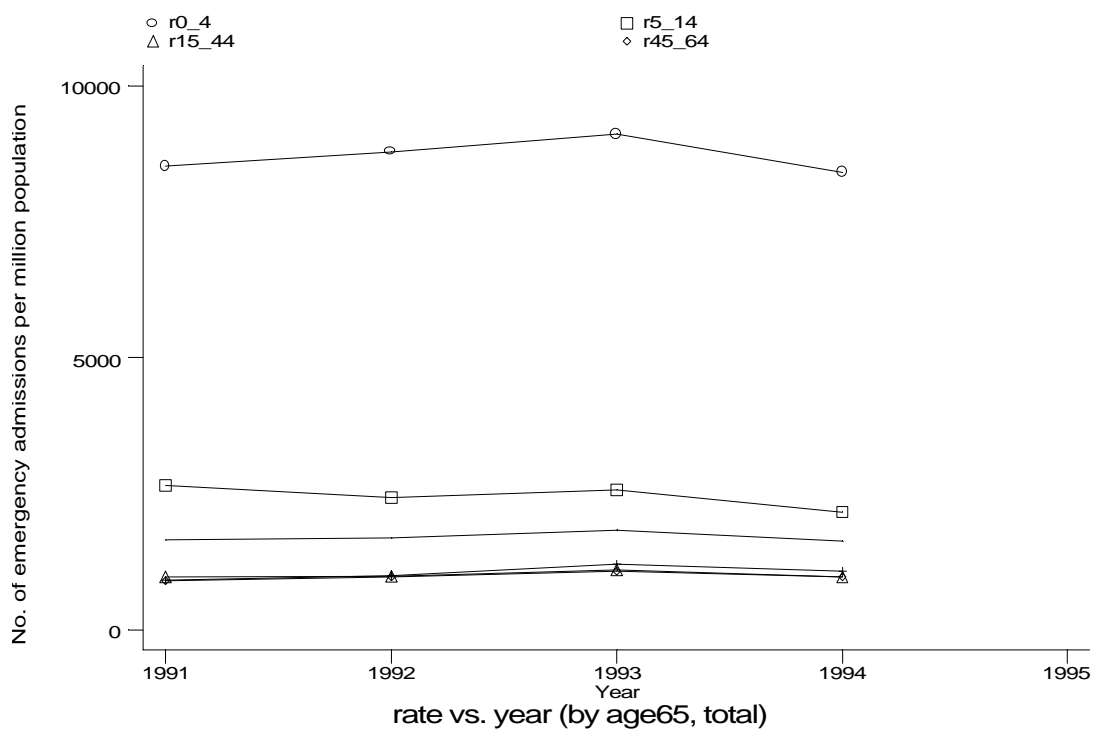
h1e1d2f.gph: FEMALES
1. Asthma

Age-sex distributions, yearly trends and cohort analysis (crude rates)

- HES Emergency admissions, England 1991-94



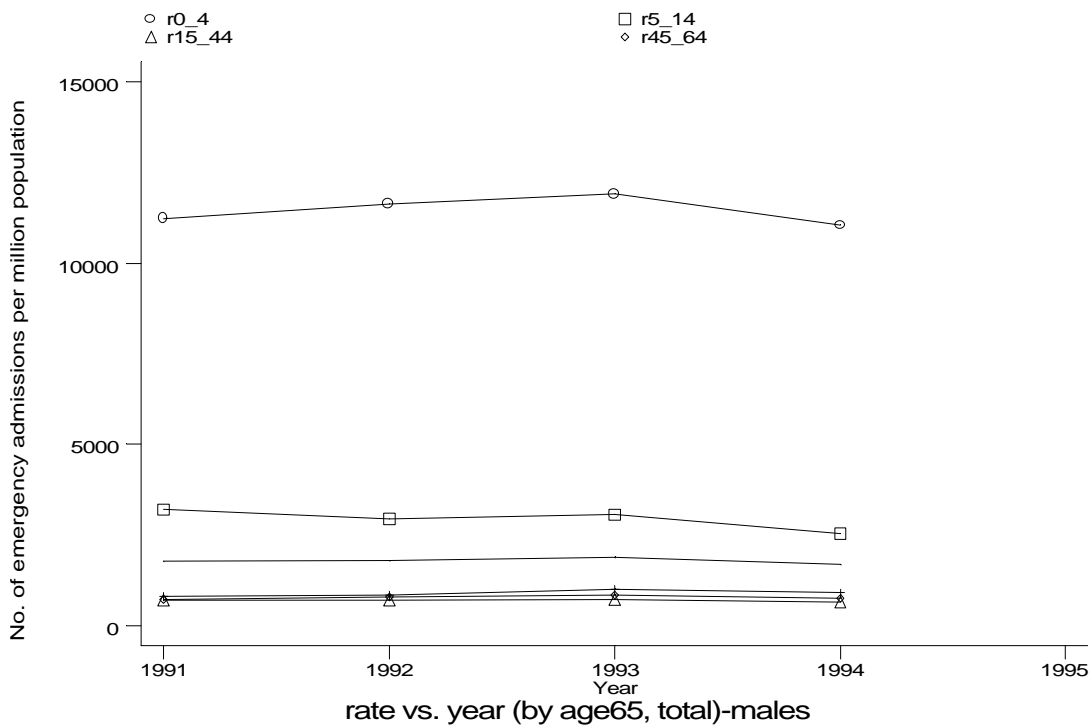
h1e1e.gph
1. Asthma



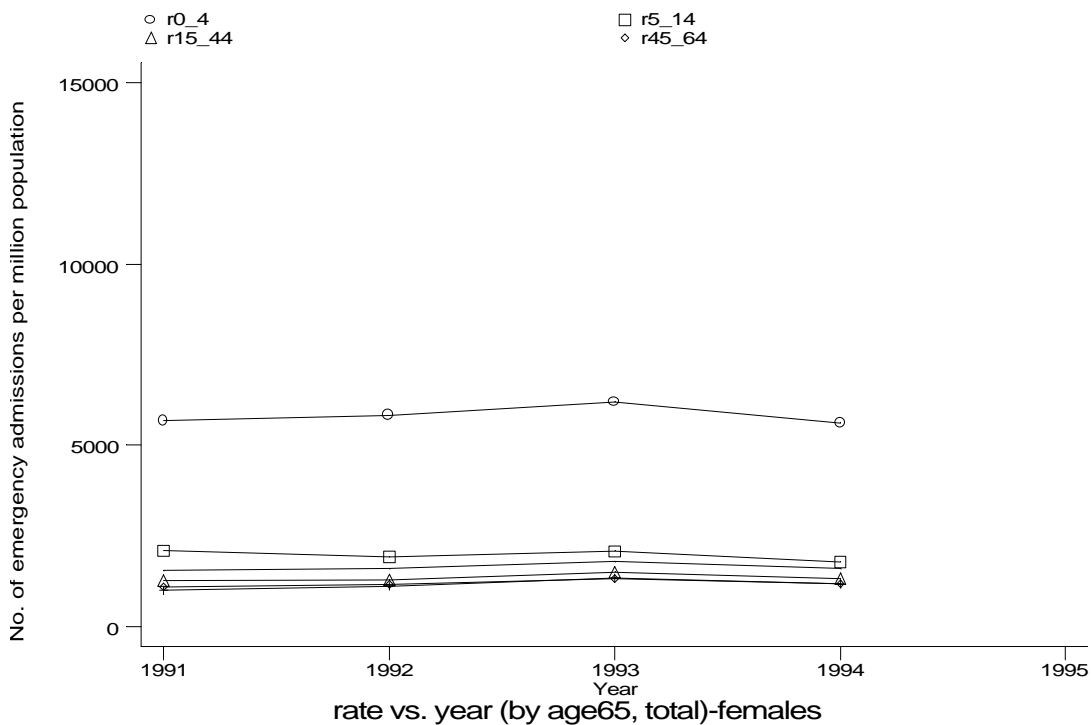
h1e1f.gph
1. Asthma

Age-sex distributions, yearly trends and cohort analysis (crude rates)

- HES Emergency admissions, England 1991-94



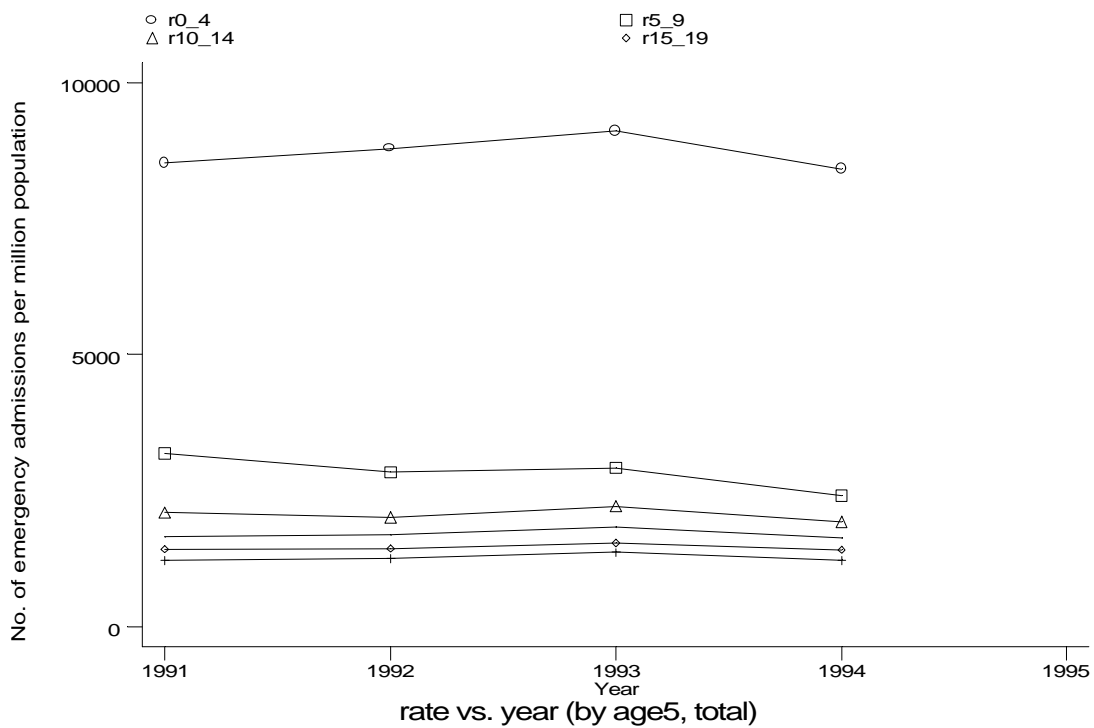
h1e1fm.gph: MALES
1. Asthma



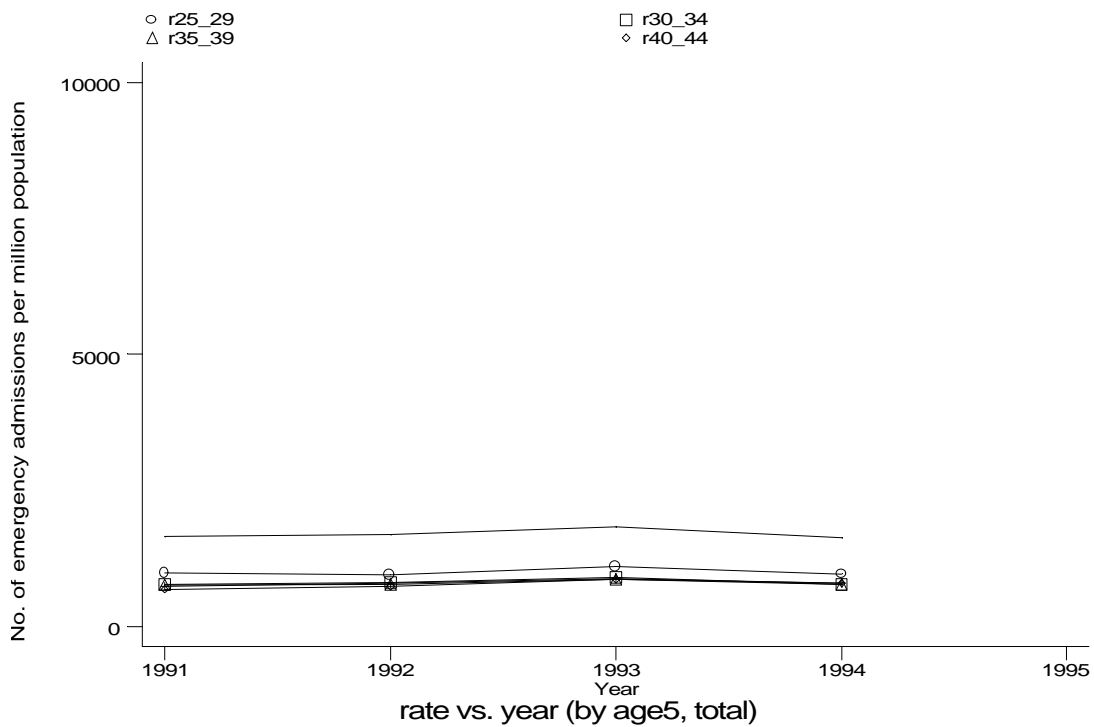
h1e1ff.gph: FEMALES
1. Asthma

Age-sex distributions, yearly trends and cohort analysis (crude rates)

- HES Emergency admissions, England 1991-94



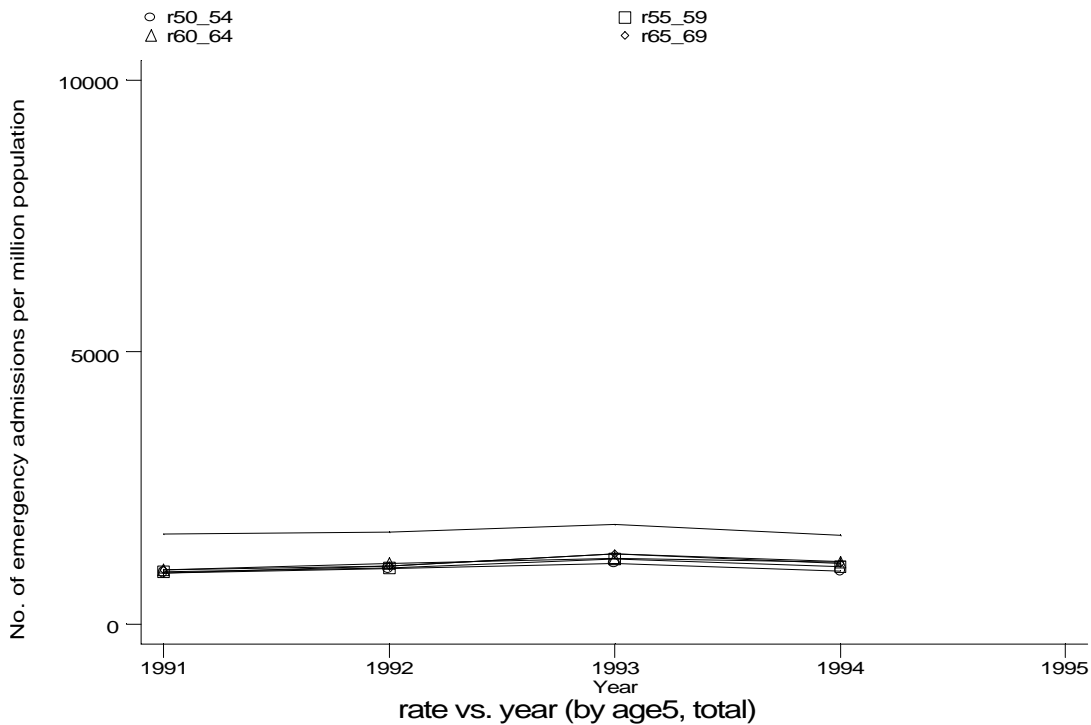
h1e1g1.gph
1. Asthma



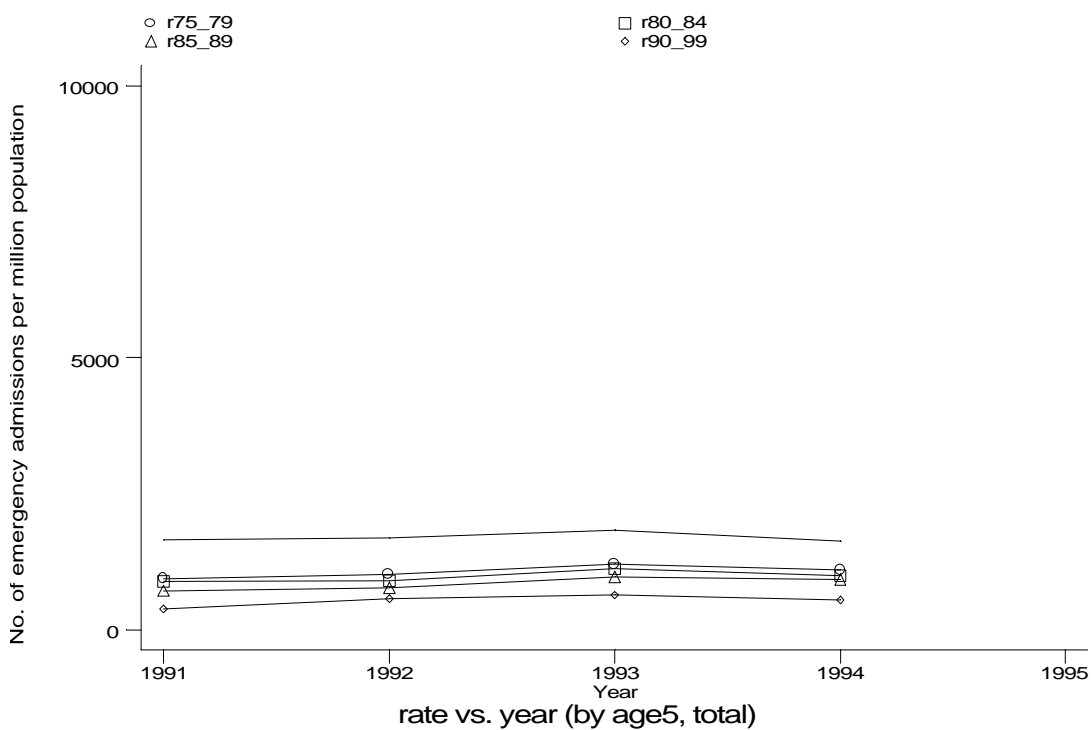
h1e1g2.gph
1. Asthma

Age-sex distributions, yearly trends and cohort analysis (crude rates)

- HES Emergency admissions, England 1991-94



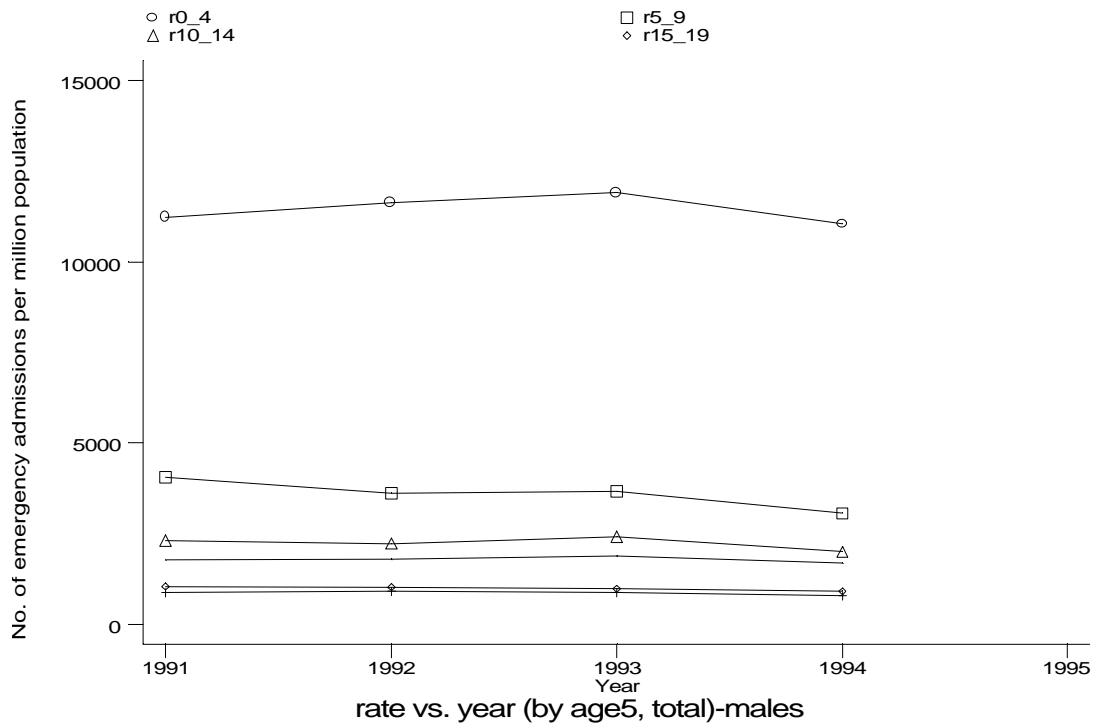
h1e193.gph
1. Asthma



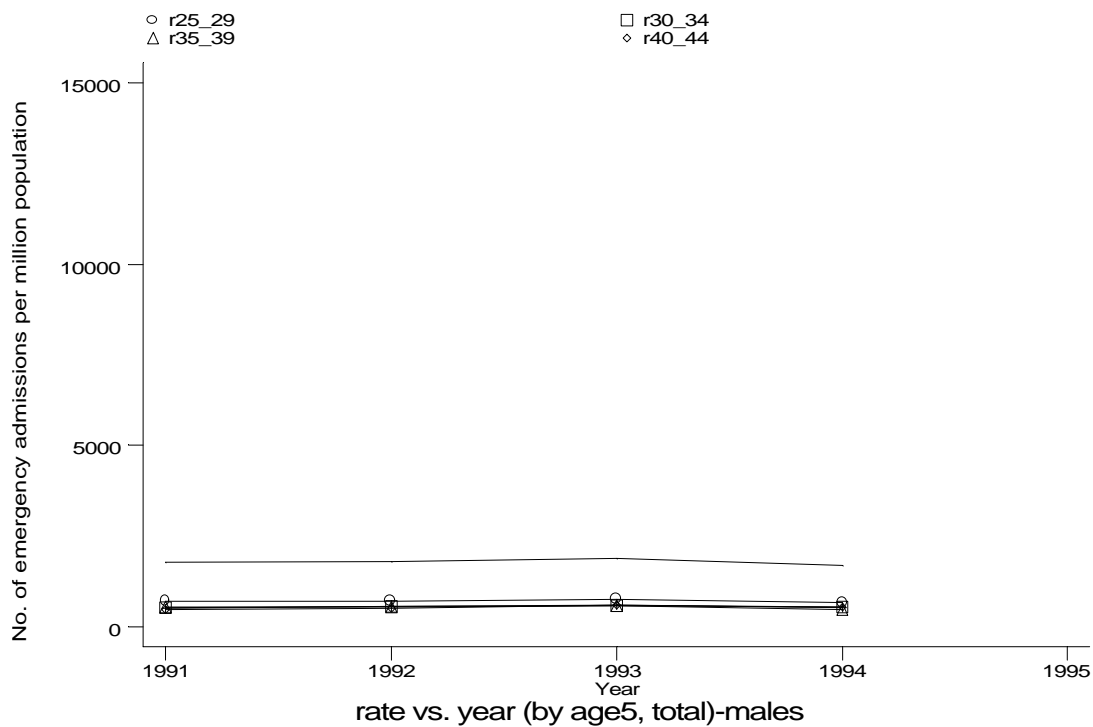
h1e194.gph
1. Asthma

Age-sex distributions, yearly trends and cohort analysis (crude rates)

- HES Emergency admissions, England 1991-94



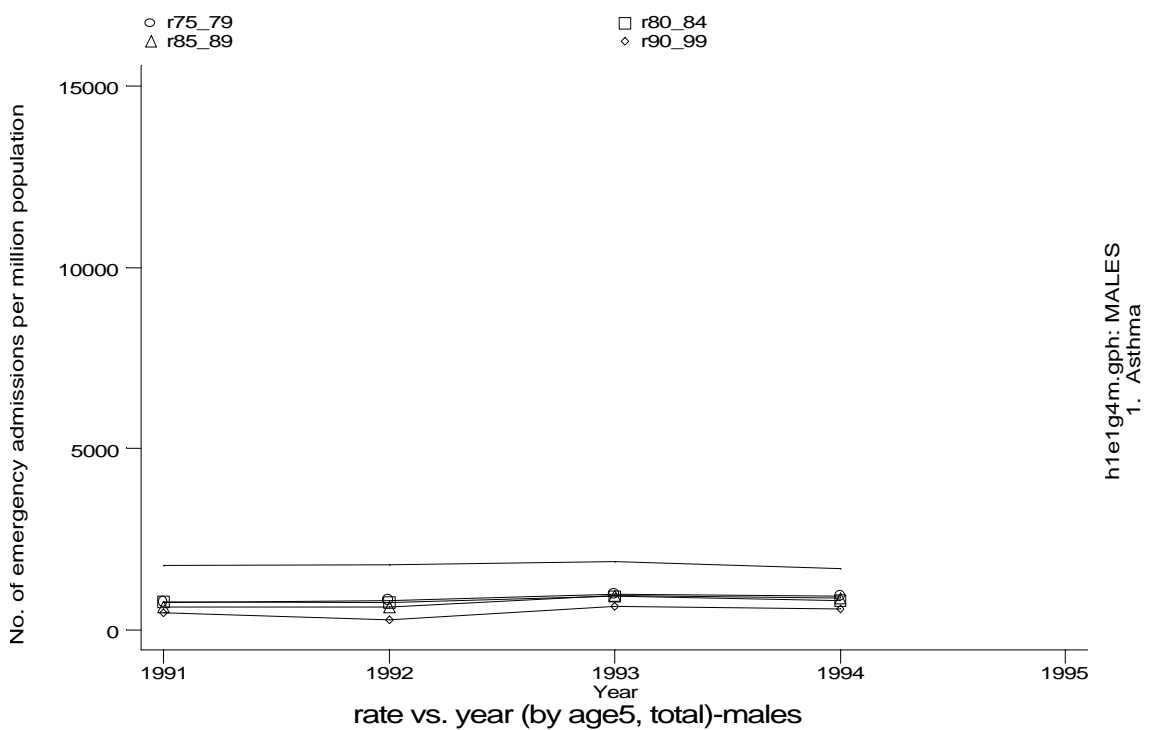
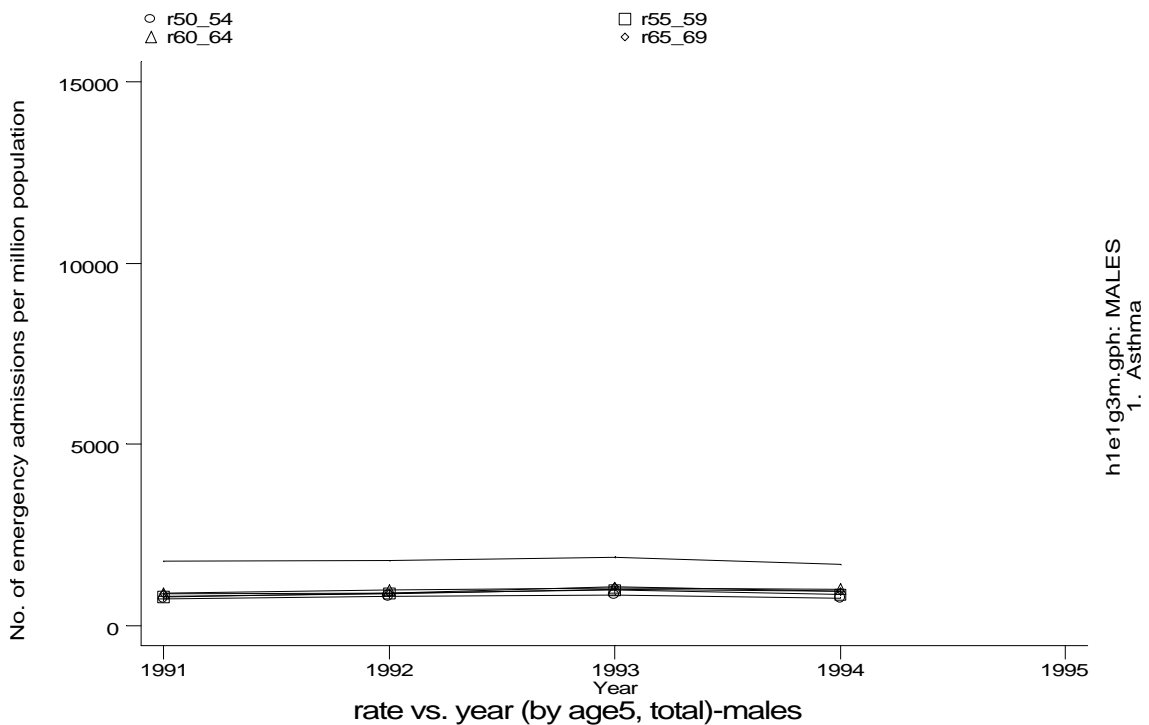
h1e1g1m.gph: MALES
1. Asthma



h1e1g2m.gph: MALES
1. Asthma

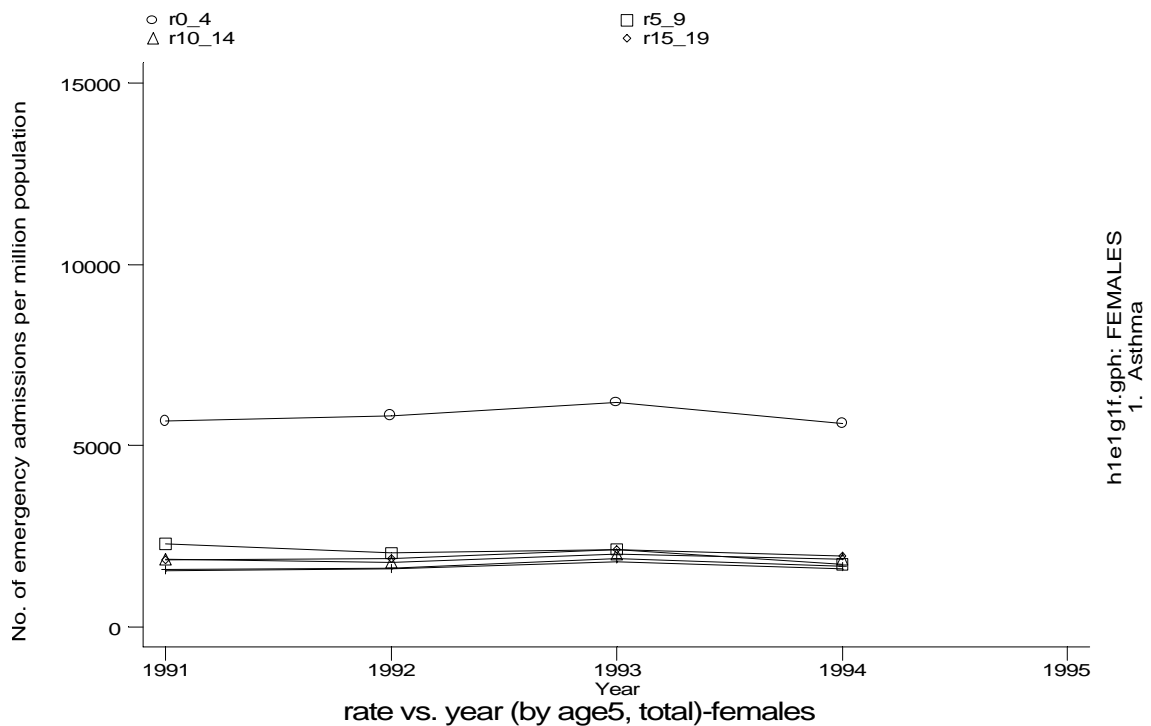
Age-sex distributions, yearly trends and cohort analysis (crude rates)

- HES Emergency admissions, England 1991-94

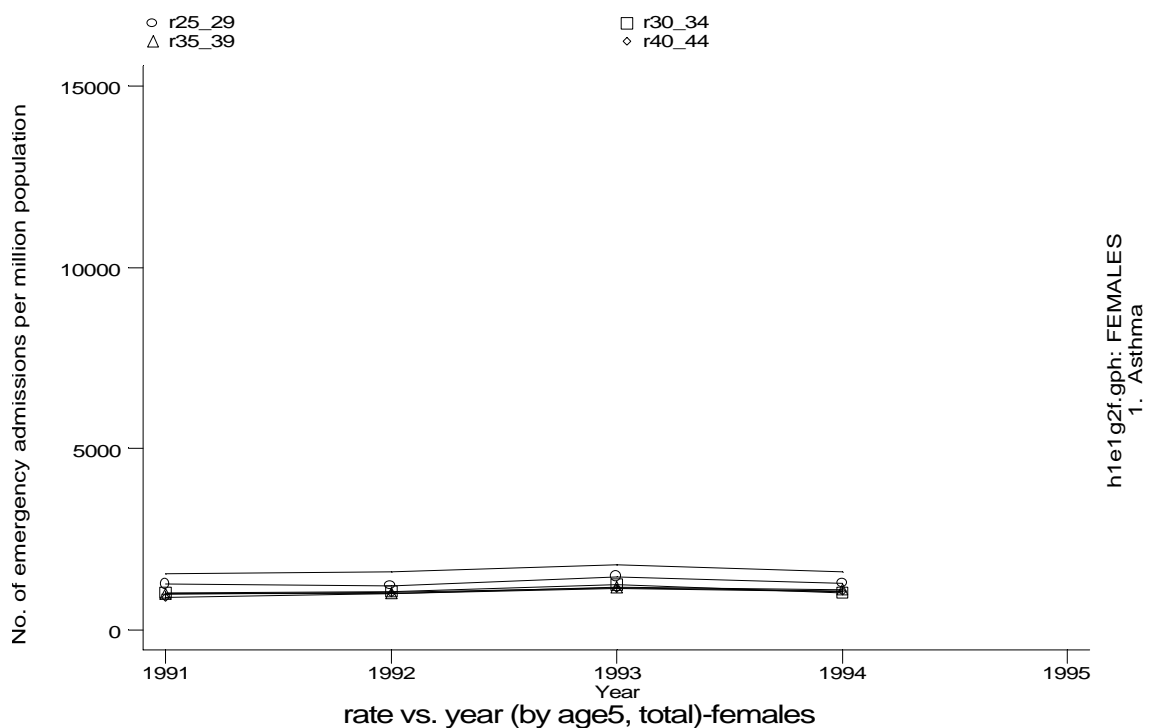


Age-sex distributions, yearly trends and cohort analysis (crude rates)

- HES Emergency admissions, England 1991-94



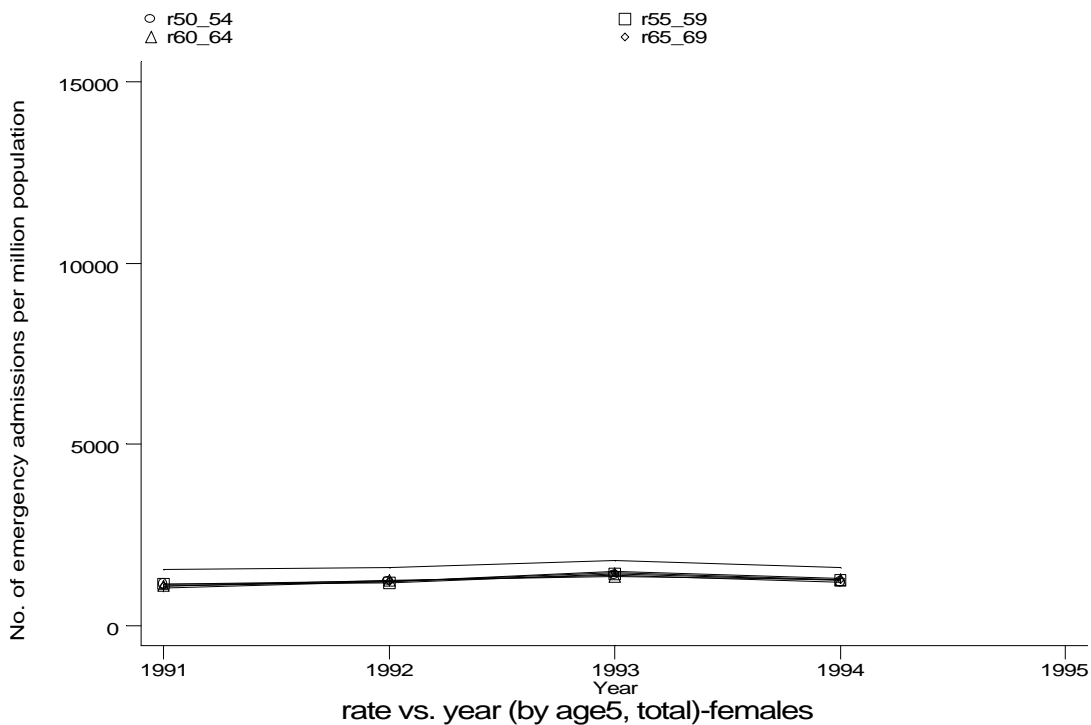
h1e1g1f.gph: FEMALES
1. Asthma



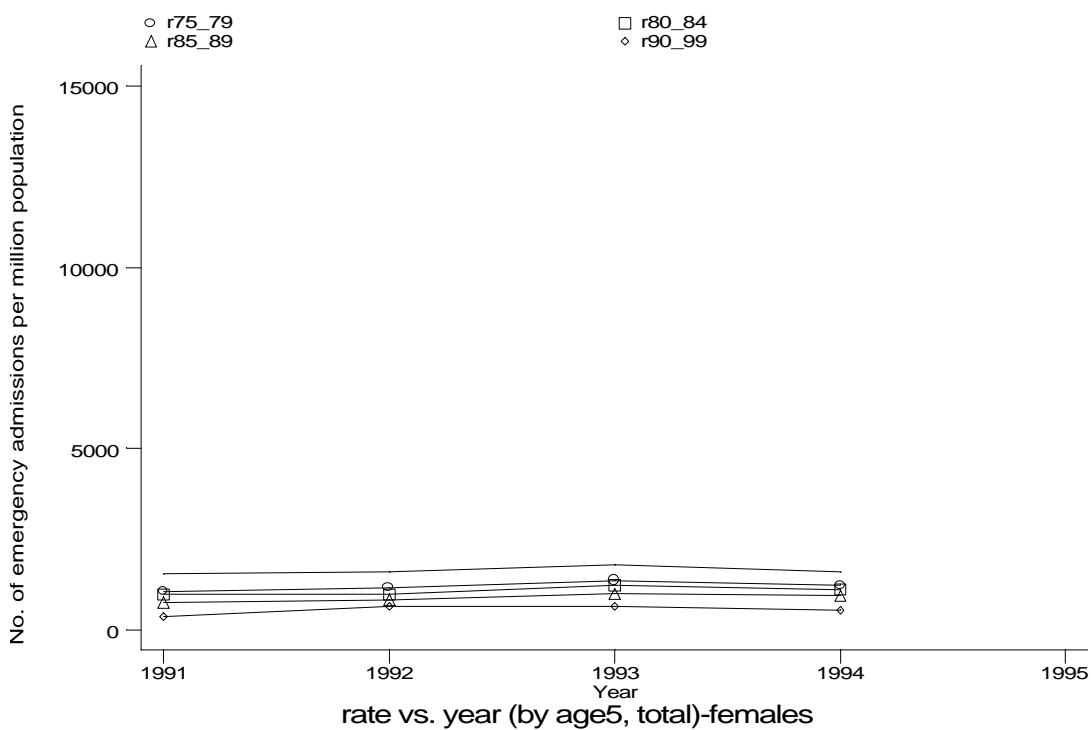
h1e1g2f.gph: FEMALES
1. Asthma

Age-sex distributions, yearly trends and cohort analysis (crude rates)

- HES Emergency admissions, England 1991-94



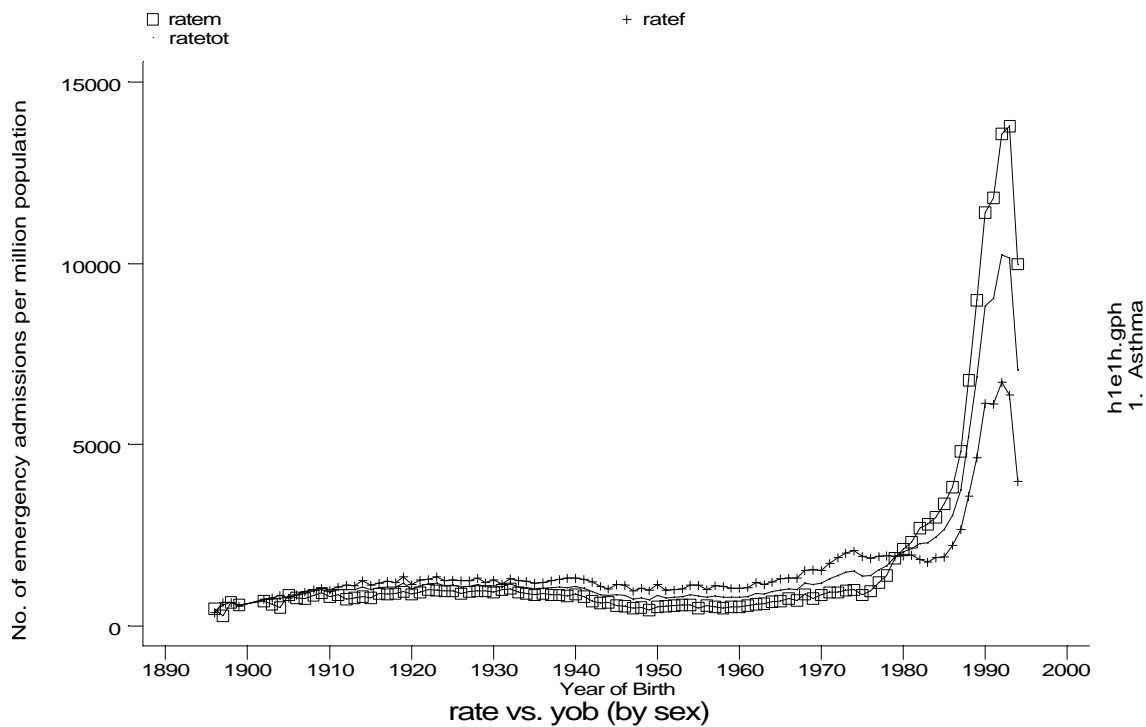
h1e1g3f.gph: FEMALES
1. Asthma



h1e1g4f.gph: FEMALES
1. Asthma

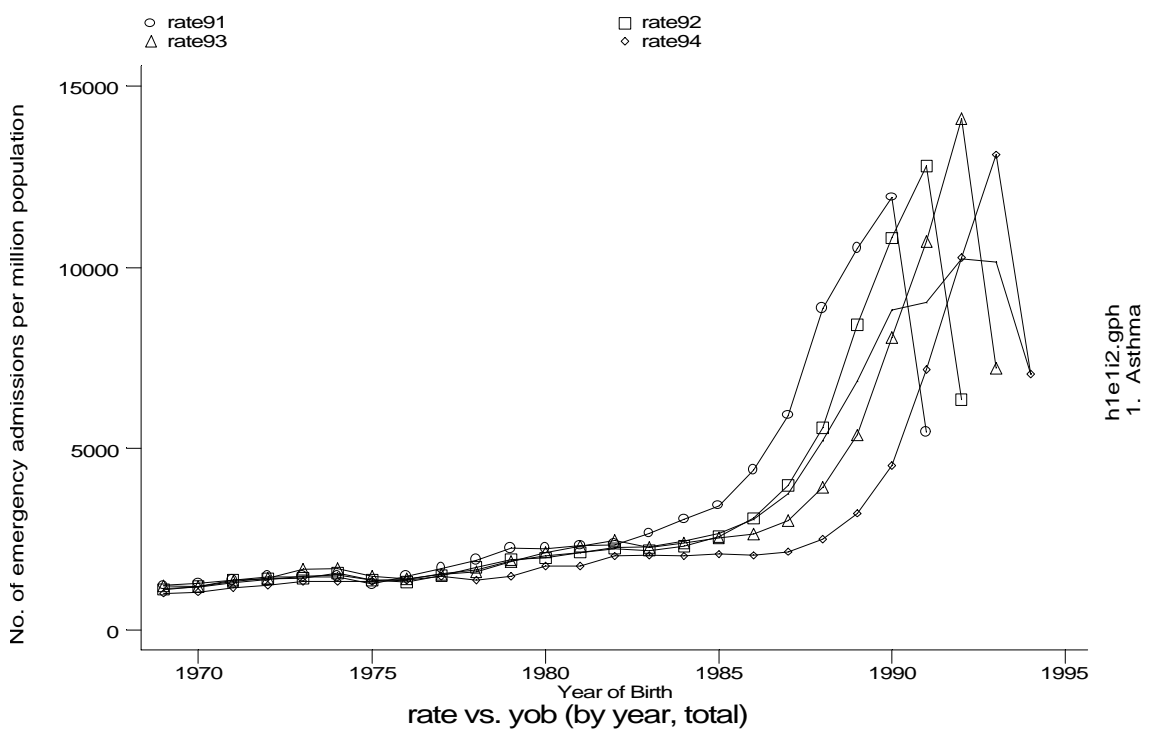
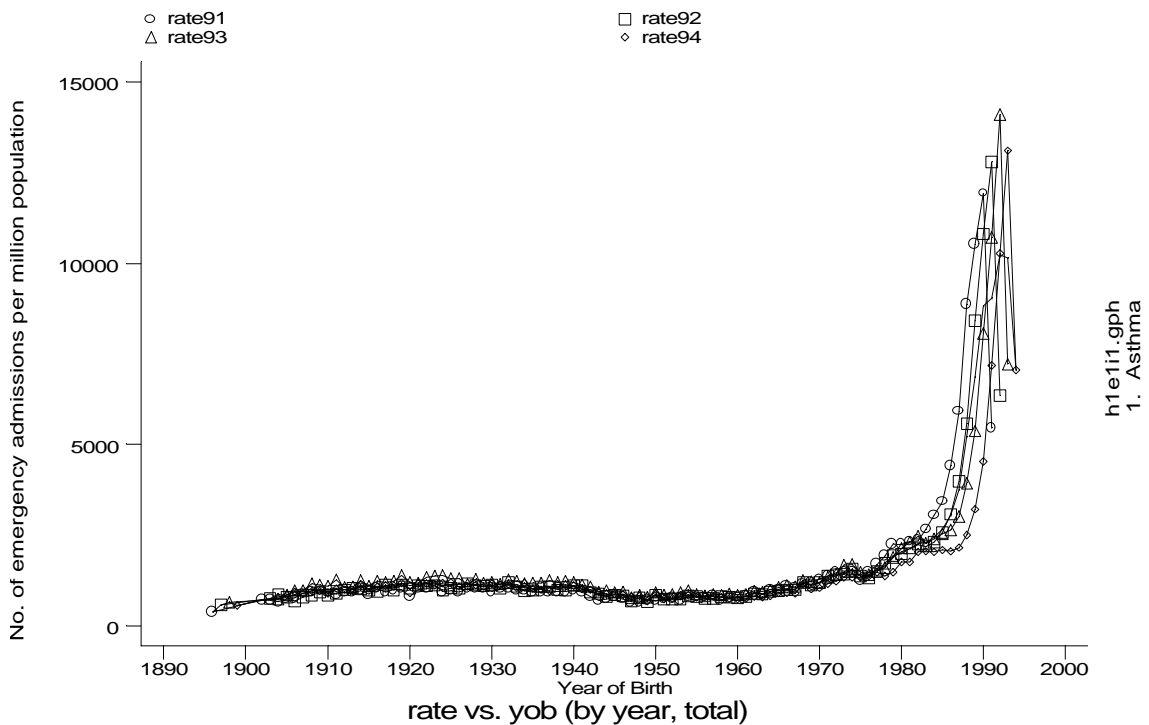
Age-sex distributions, yearly trends and cohort analysis (crude rates)

- HES Emergency admissions, England 1991-94



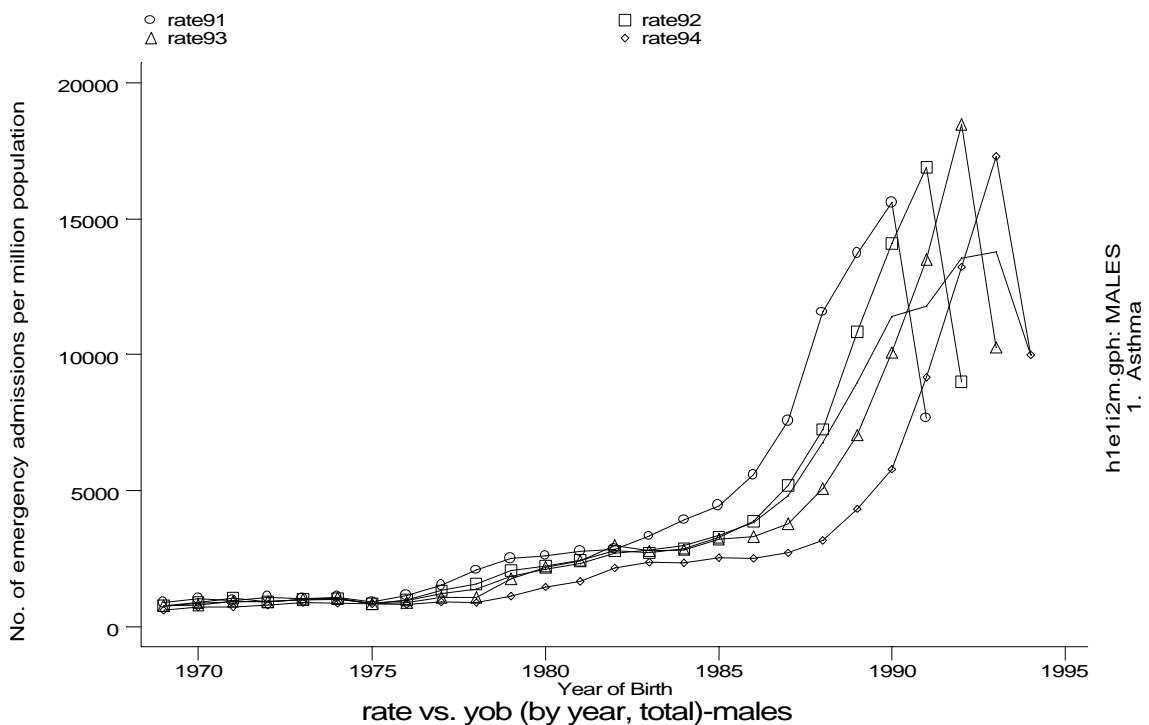
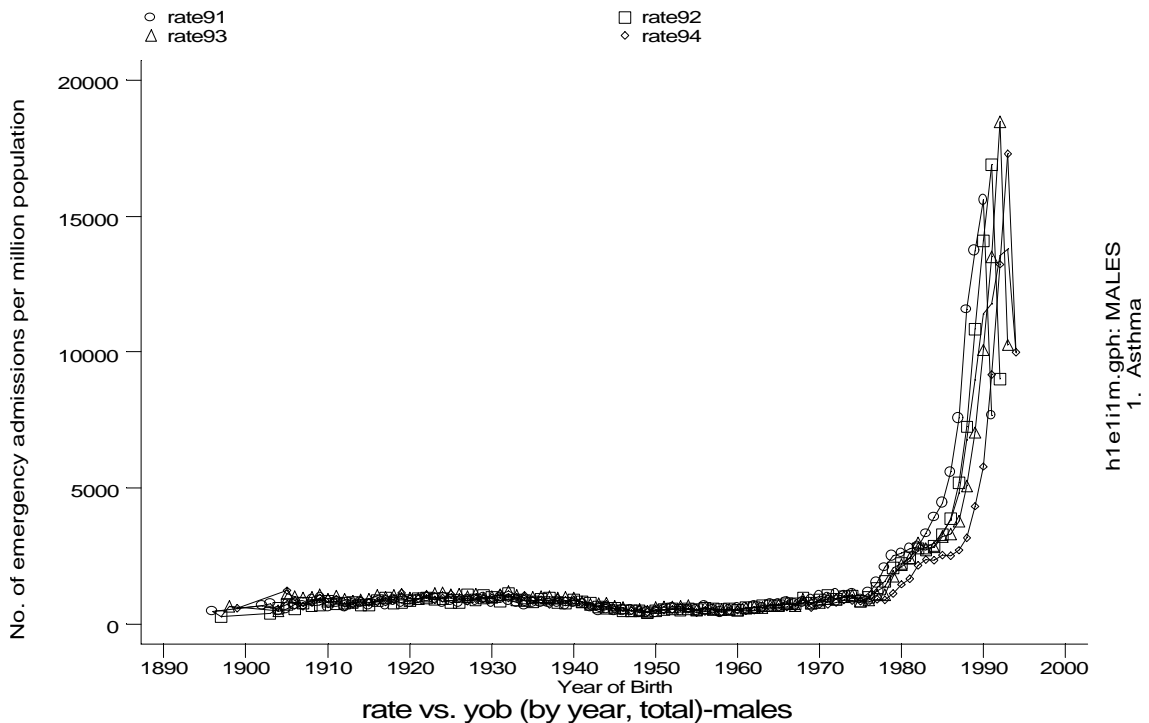
Age-sex distributions, yearly trends and cohort analysis (crude rates)

- HES Emergency admissions, England 1991-94



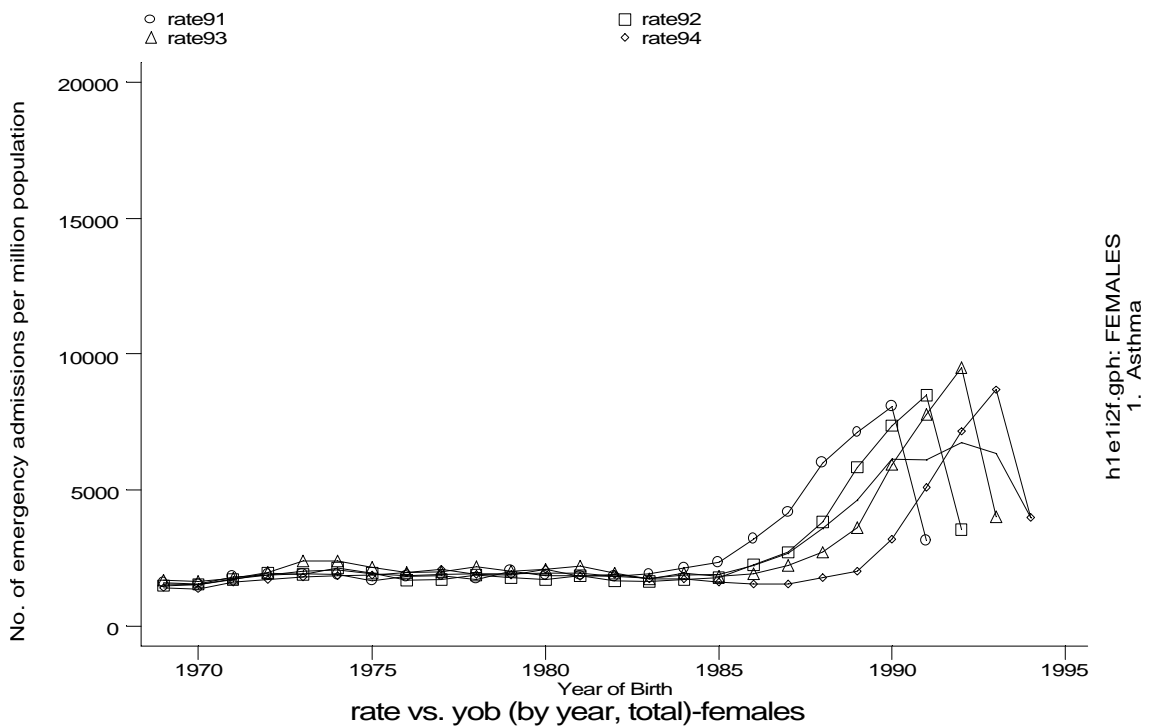
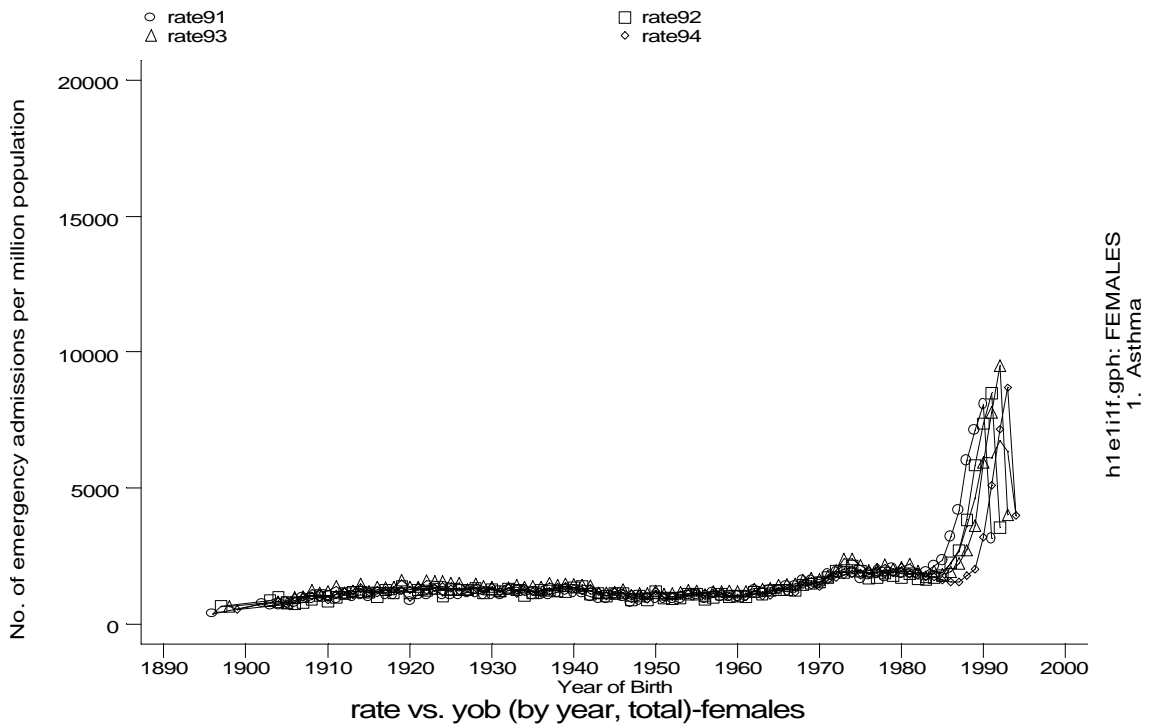
Age-sex distributions, yearly trends and cohort analysis (crude rates)

- HES Emergency admissions, England 1991-94



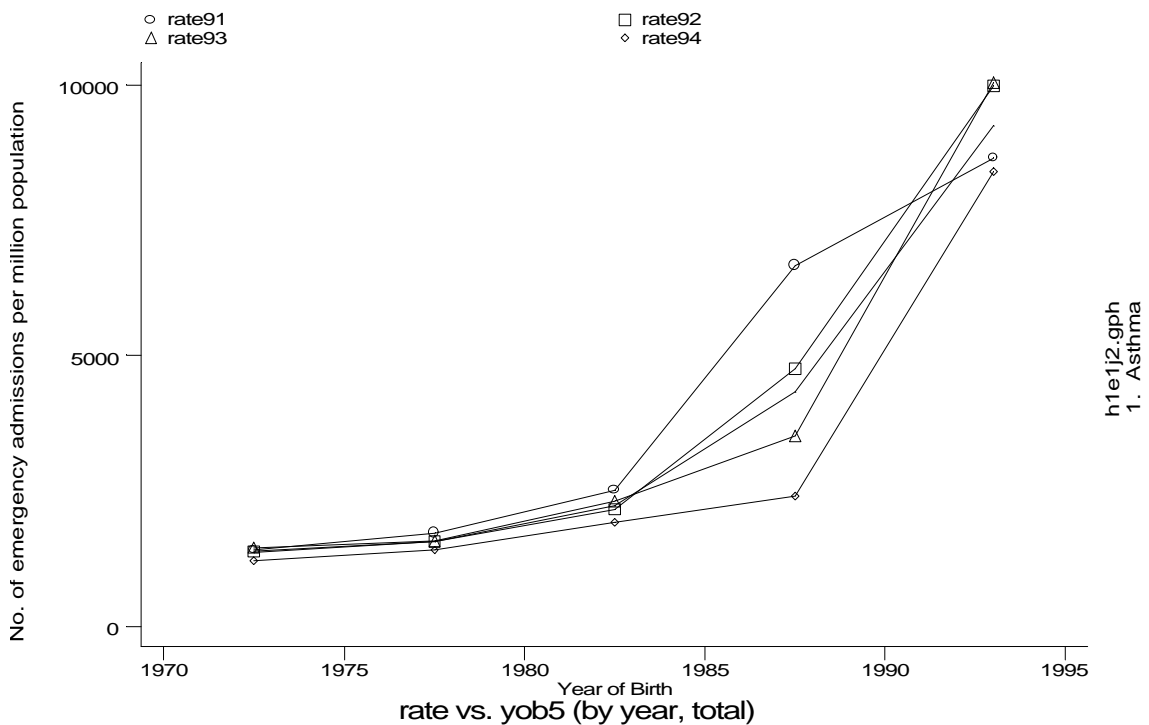
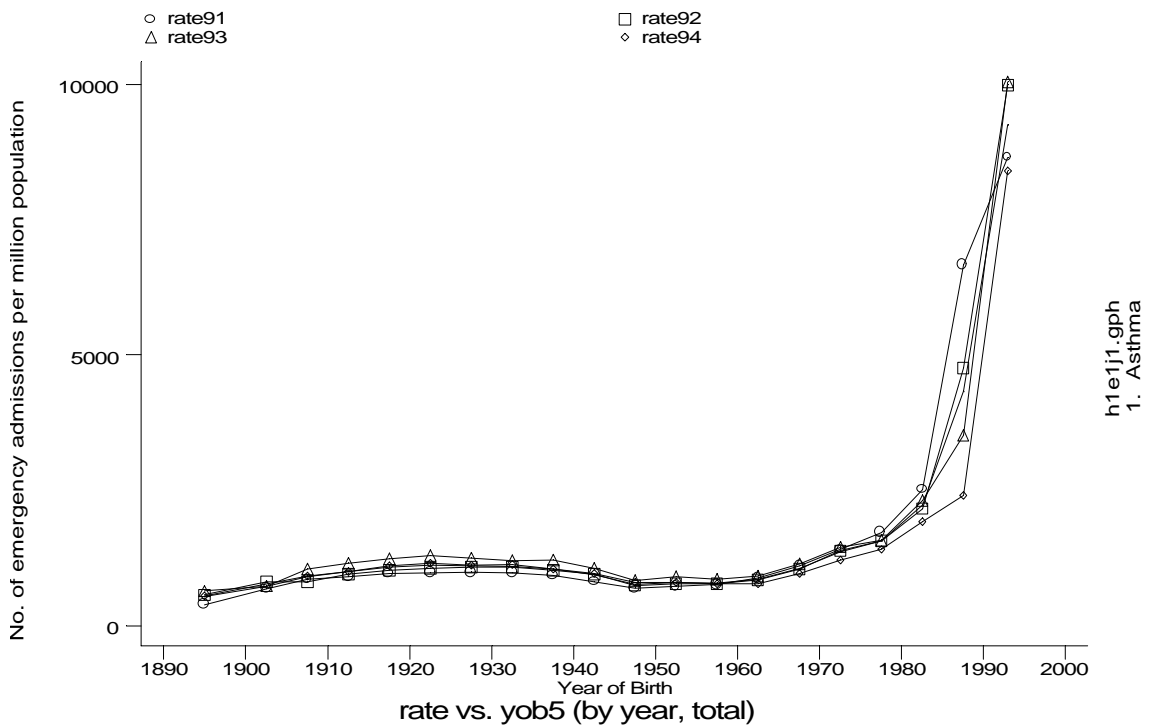
Age-sex distributions, yearly trends and cohort analysis (crude rates)

- HES Emergency admissions, England 1991-94



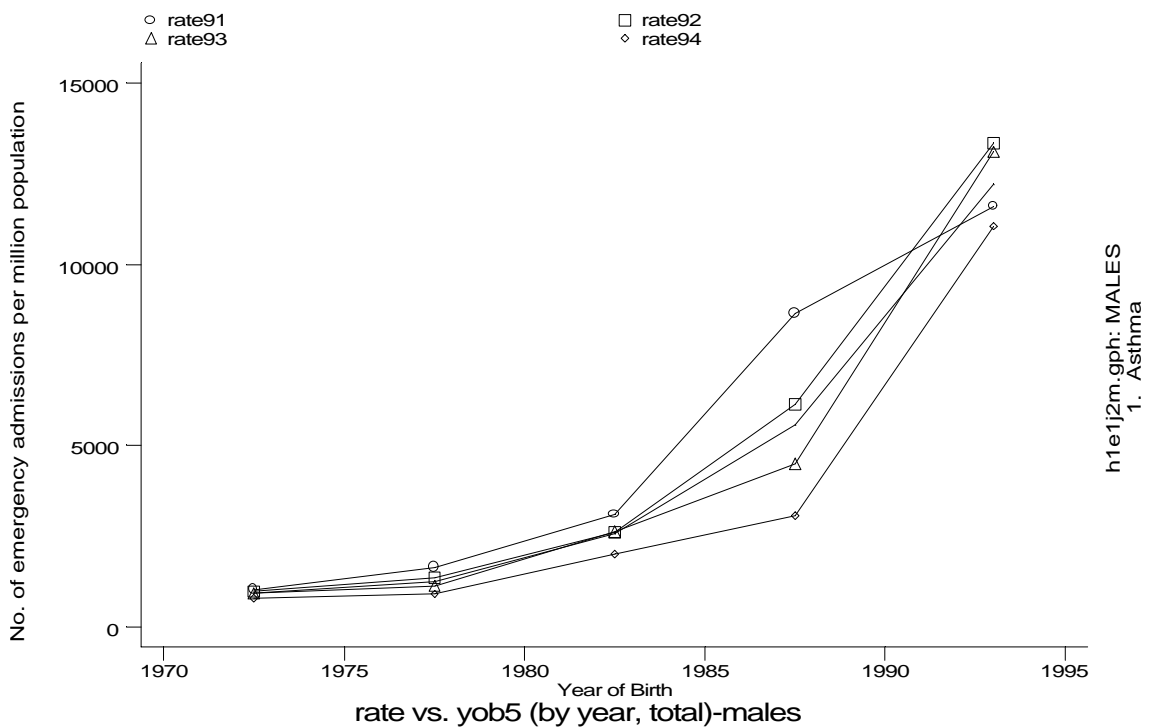
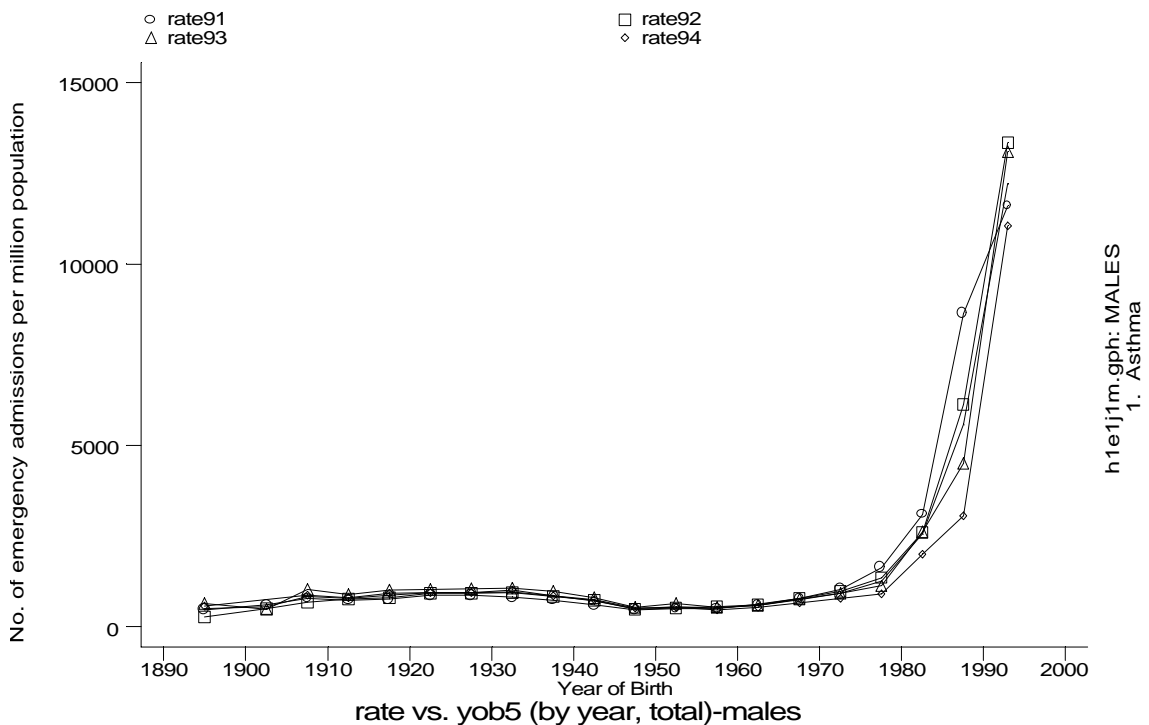
Age-sex distributions, yearly trends and cohort analysis (crude rates)

- HES Emergency admissions, England 1991-94



Age-sex distributions, yearly trends and cohort analysis (crude rates)

- HES Emergency admissions, England 1991-94



Age-sex distributions, yearly trends and cohort analysis (crude rates)

- HES Emergency admissions, England 1991-94

