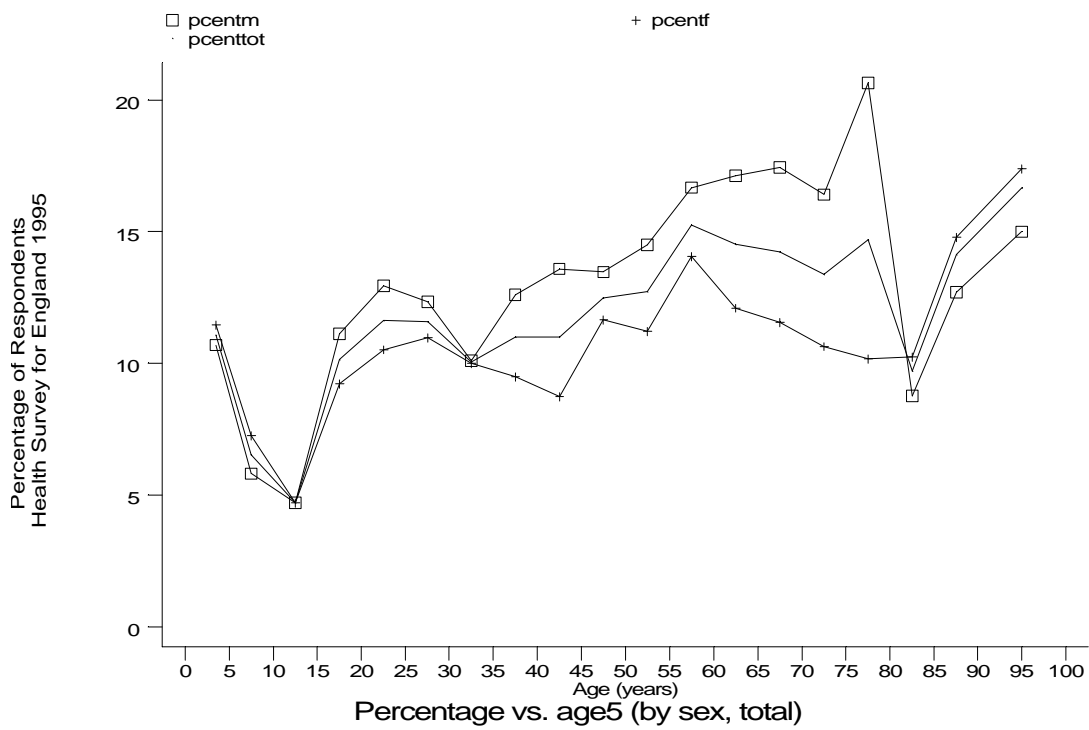
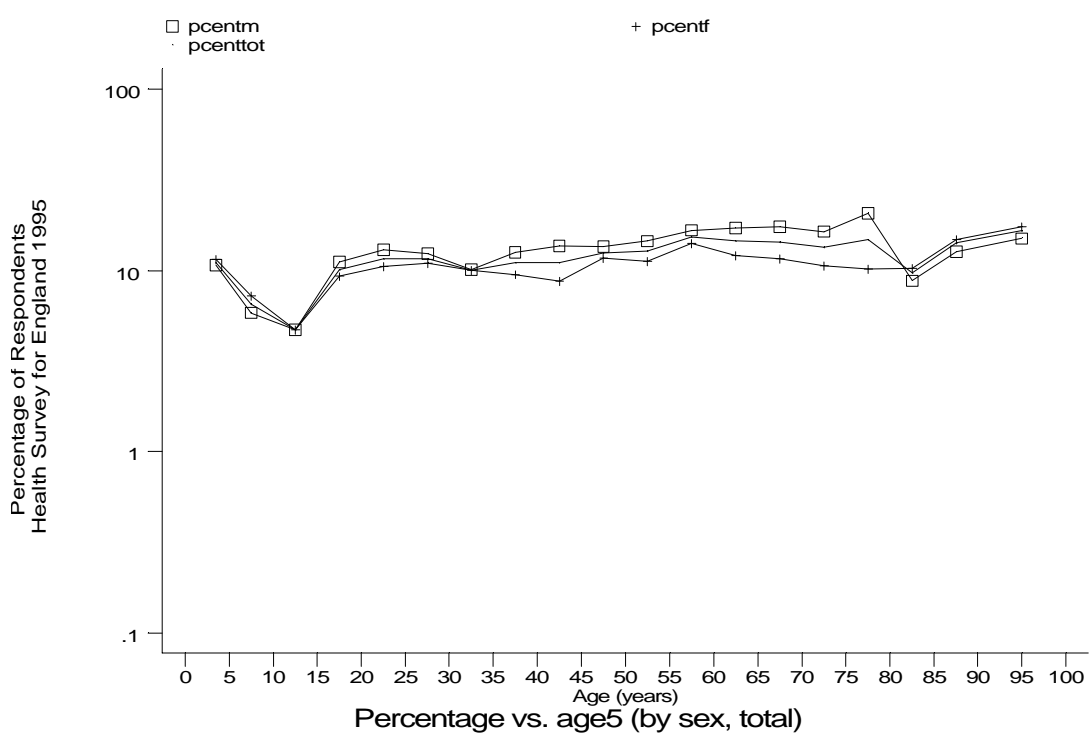


Age-sex distributions, yearly trends and cohort analysis (crude rates)

- HSE95 Untreated 'asthma' (patients with symptoms of wheeze or whistling in the last 12 months but excluding those using an inhaler in the last 12 months), England 1995



hse8a1.gph  
8. Untreated Asthma Symptoms



hse8a2.gph  
8. Untreated Asthma Symptoms