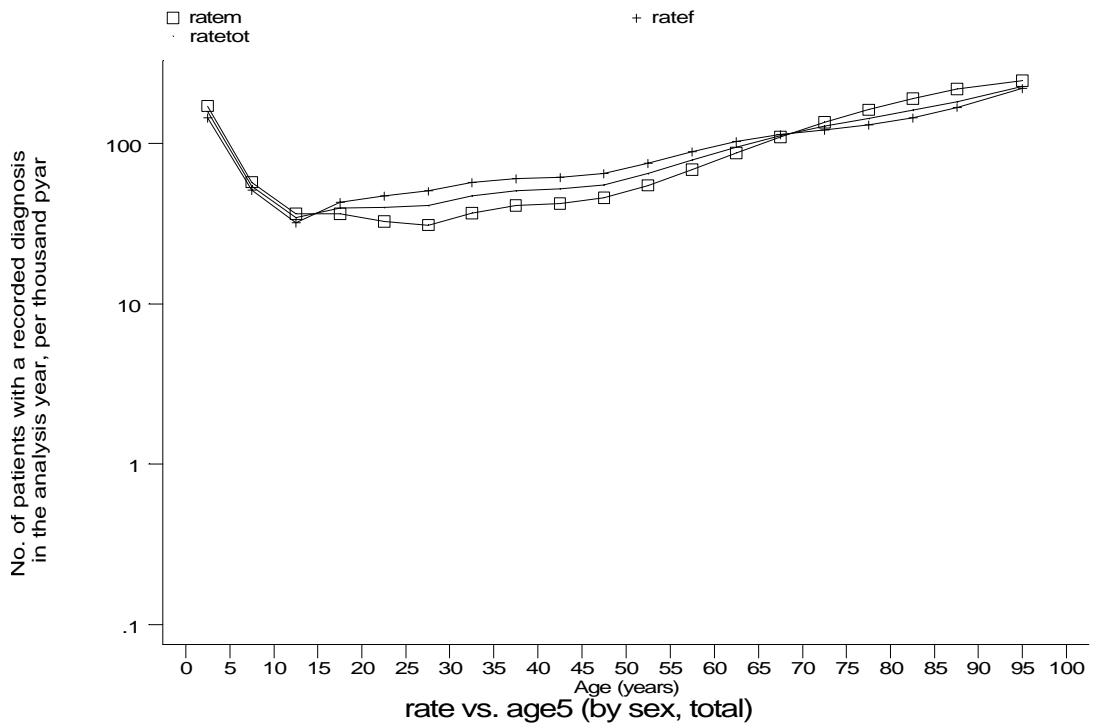
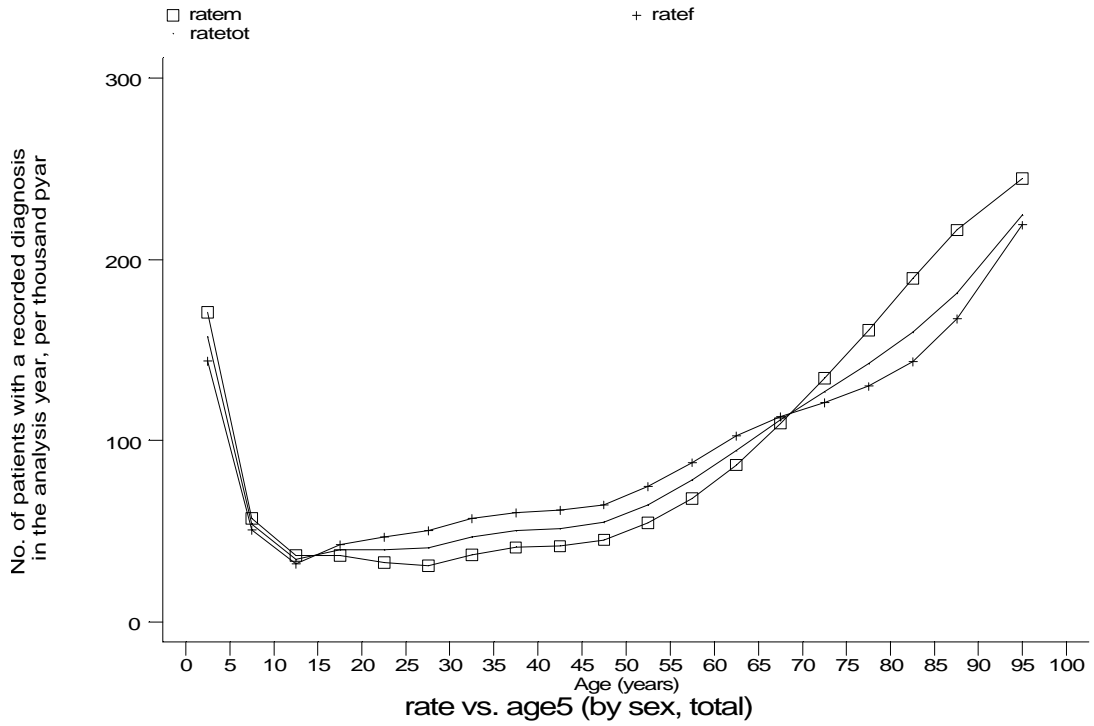


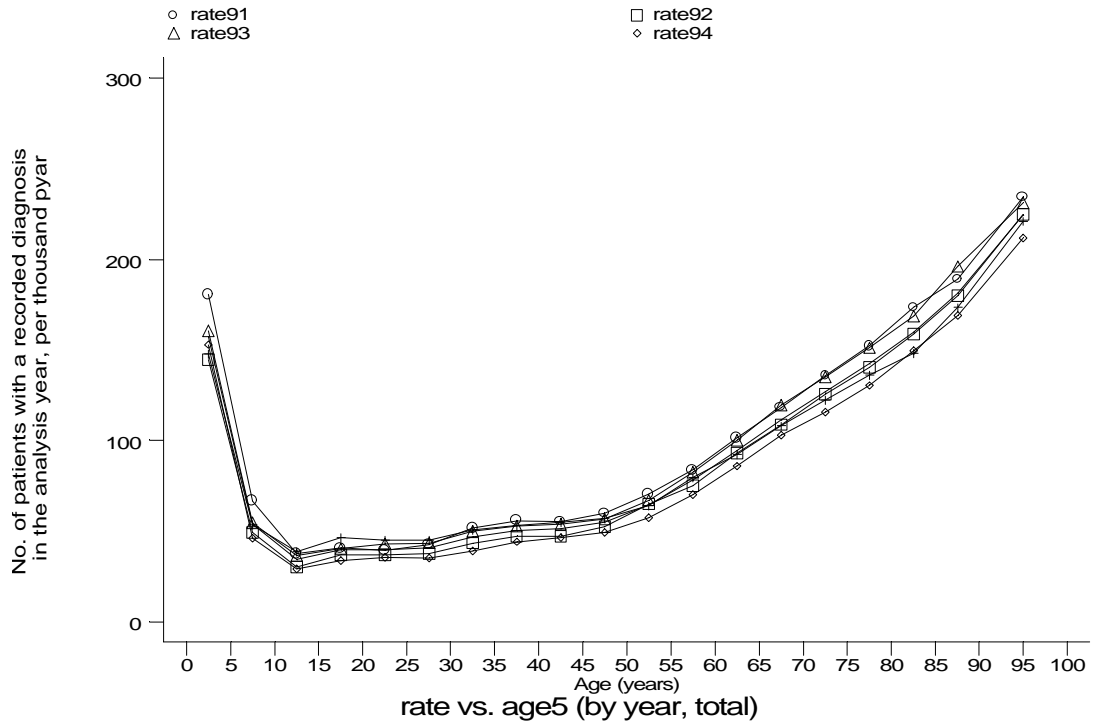
Age-sex distributions, yearly trends and cohort analysis (crude rates)

- GPRD Diagnosis, England 1991-95

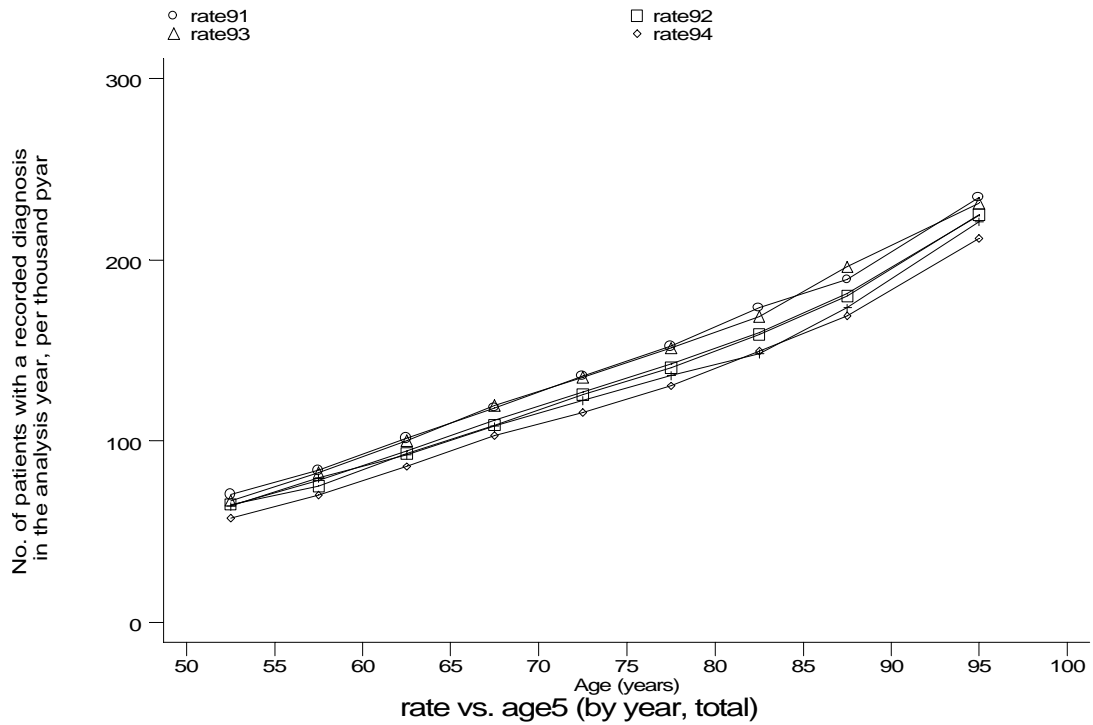


Age-sex distributions, yearly trends and cohort analysis (crude rates)

- GPRD Diagnosis, England 1991-95



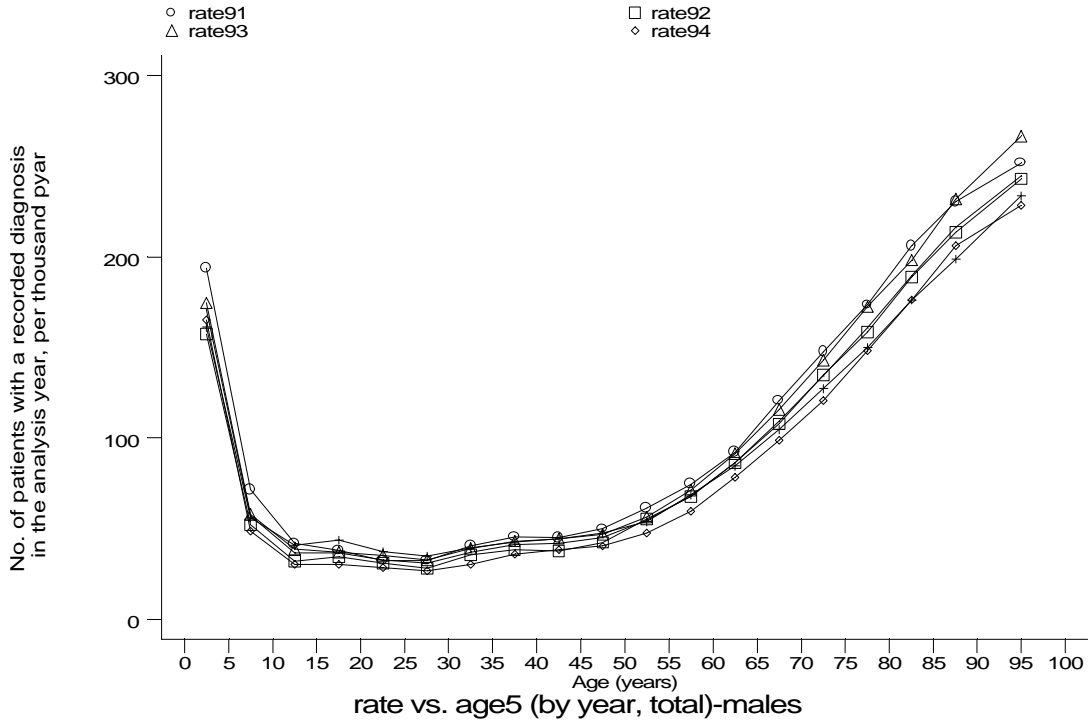
g1a14b1.gph
4. OR 12.



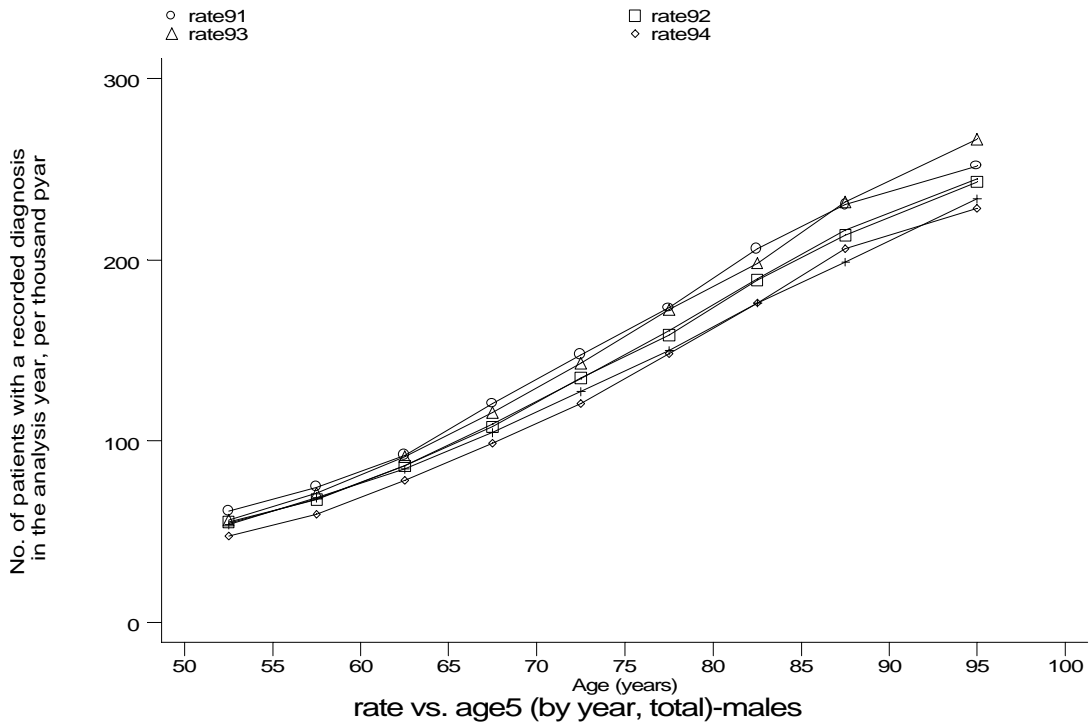
g1a14b2.gph
4. OR 12.

Age-sex distributions, yearly trends and cohort analysis (crude rates)

- GPRD Diagnosis, England 1991-95



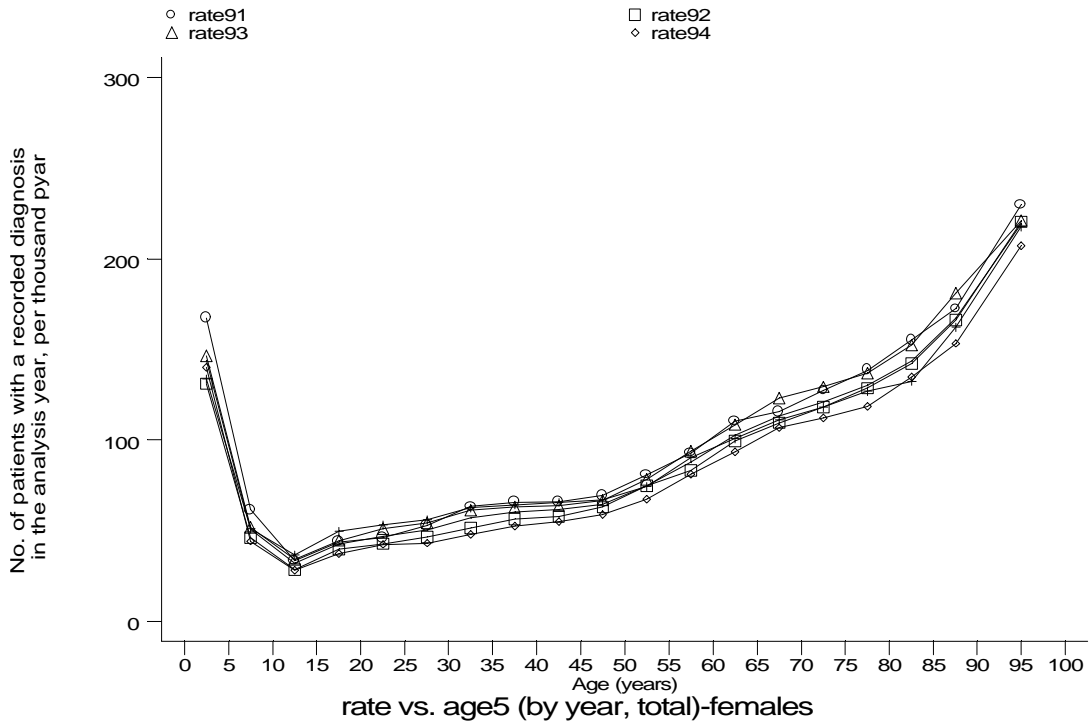
g1a14b1m.gph: MALES
4. OR 12.



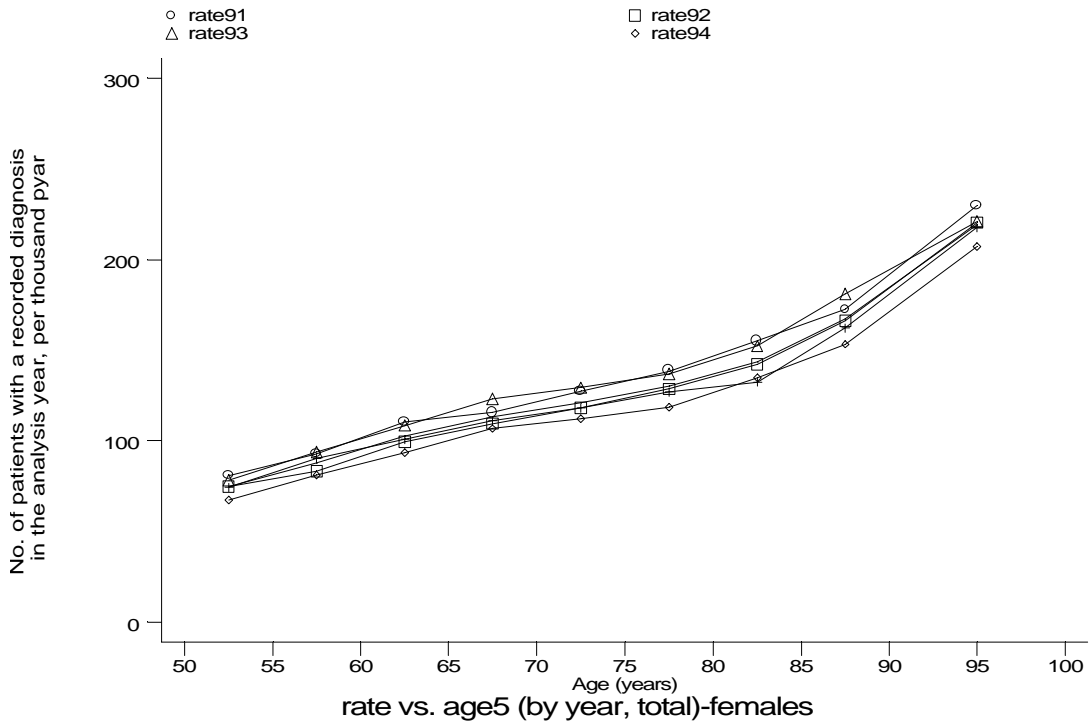
g1a14b2m.gph: MALES
4. OR 12.

Age-sex distributions, yearly trends and cohort analysis (crude rates)

- GPRD Diagnosis, England 1991-95



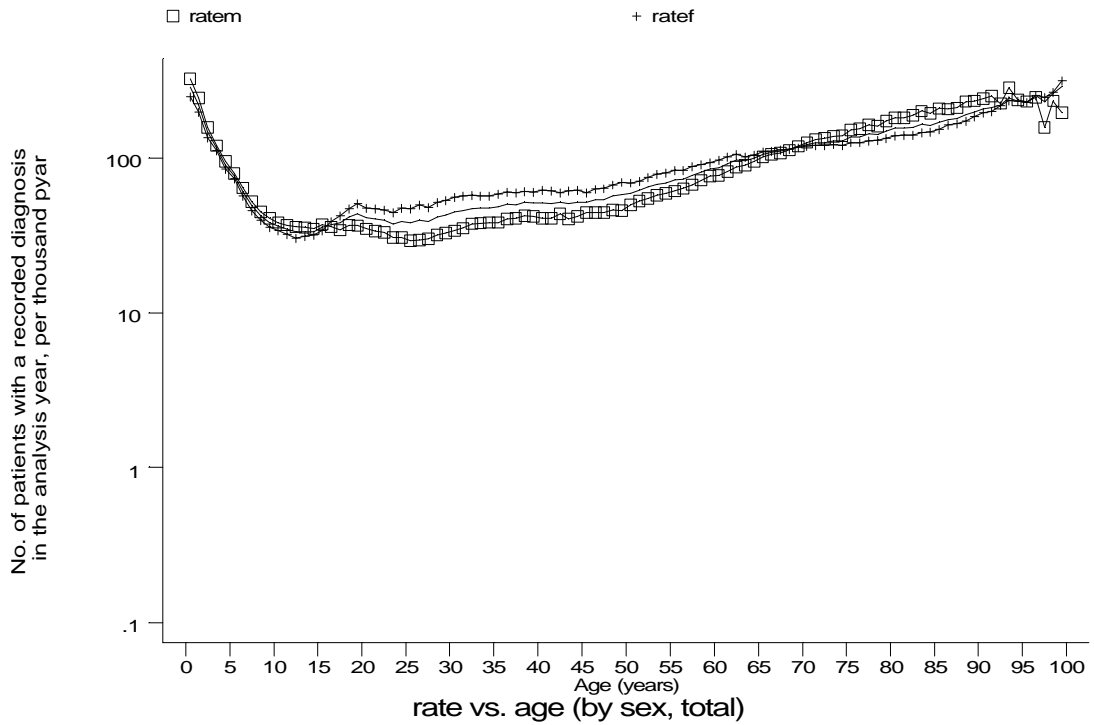
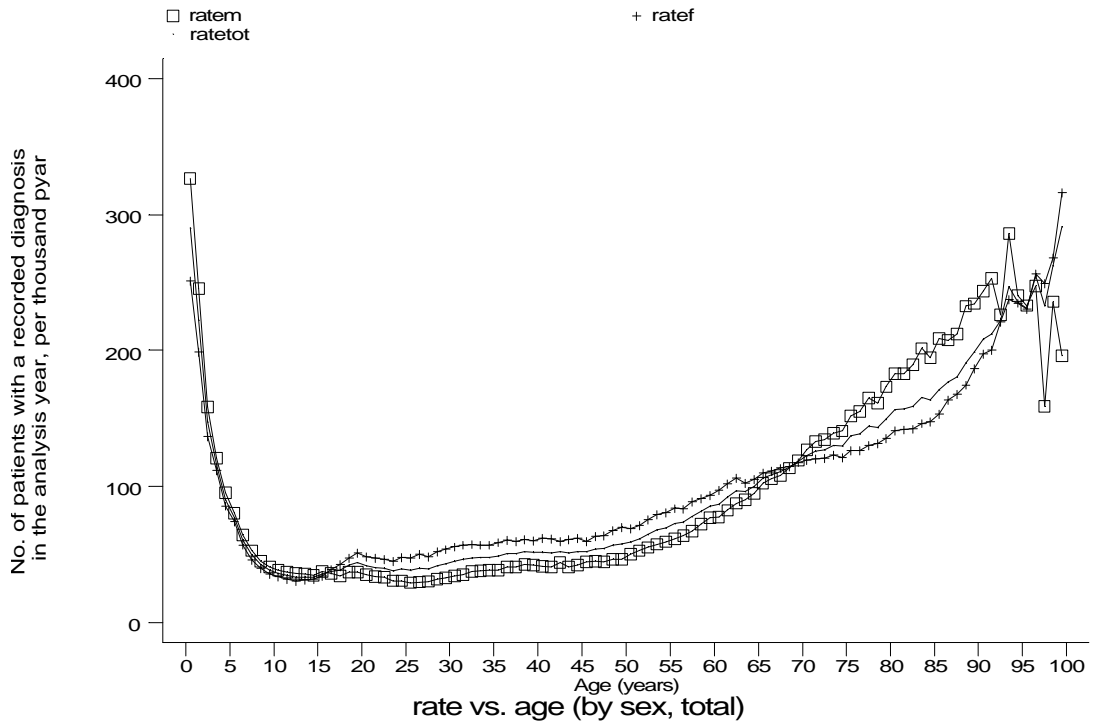
g1a14b1f.gph: FEMALES
4. OR 12.



g1a14b2f.gph: FEMALES
4. OR 12.

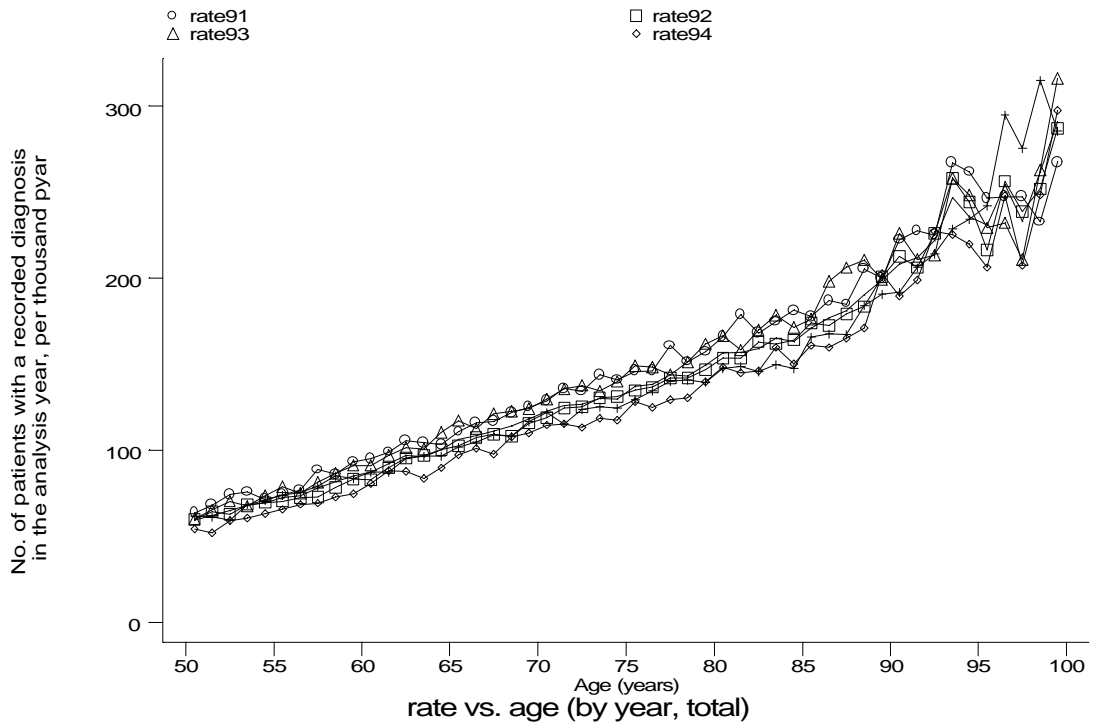
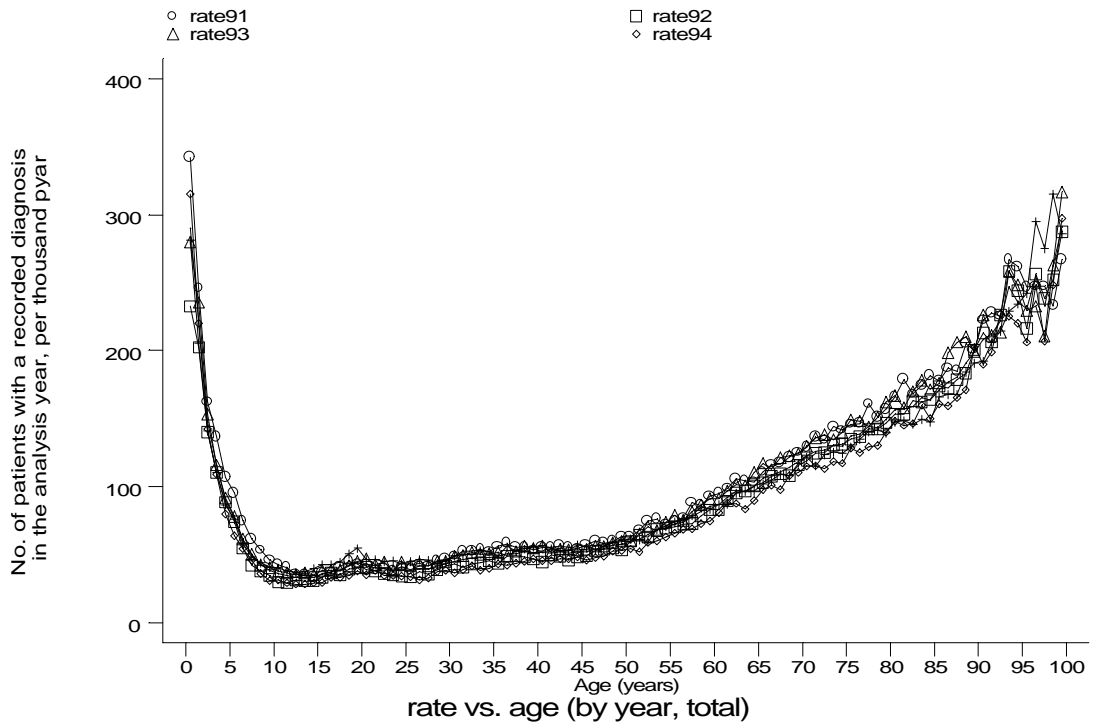
Age-sex distributions, yearly trends and cohort analysis (crude rates)

- GPRD Diagnosis, England 1991-95



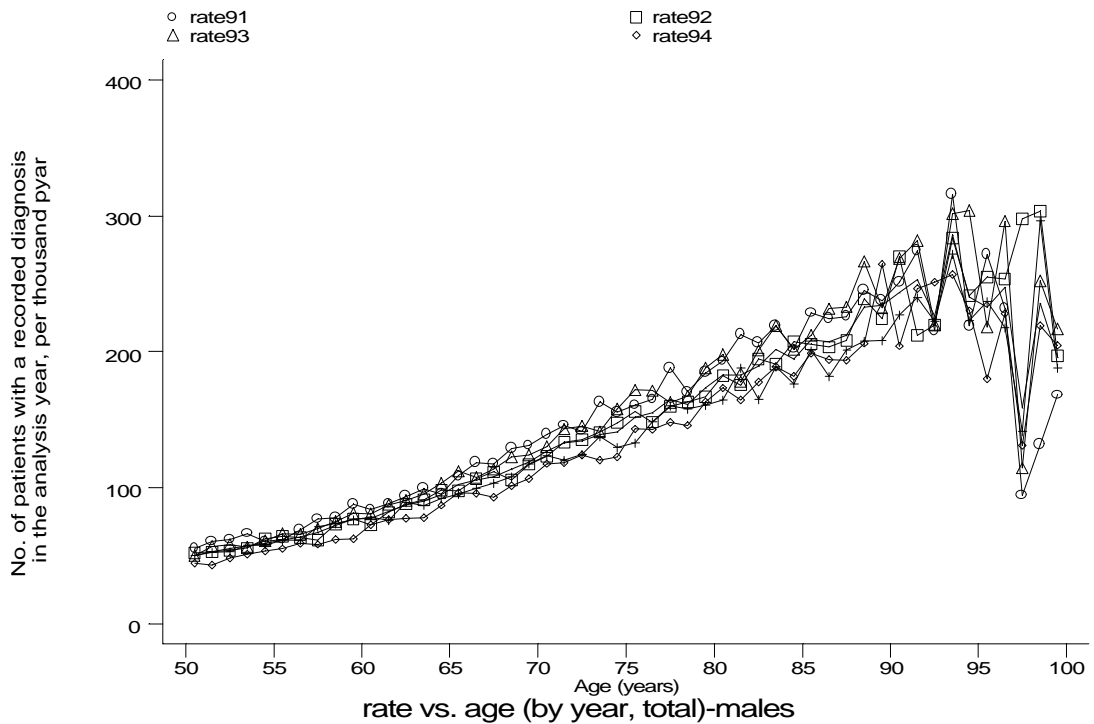
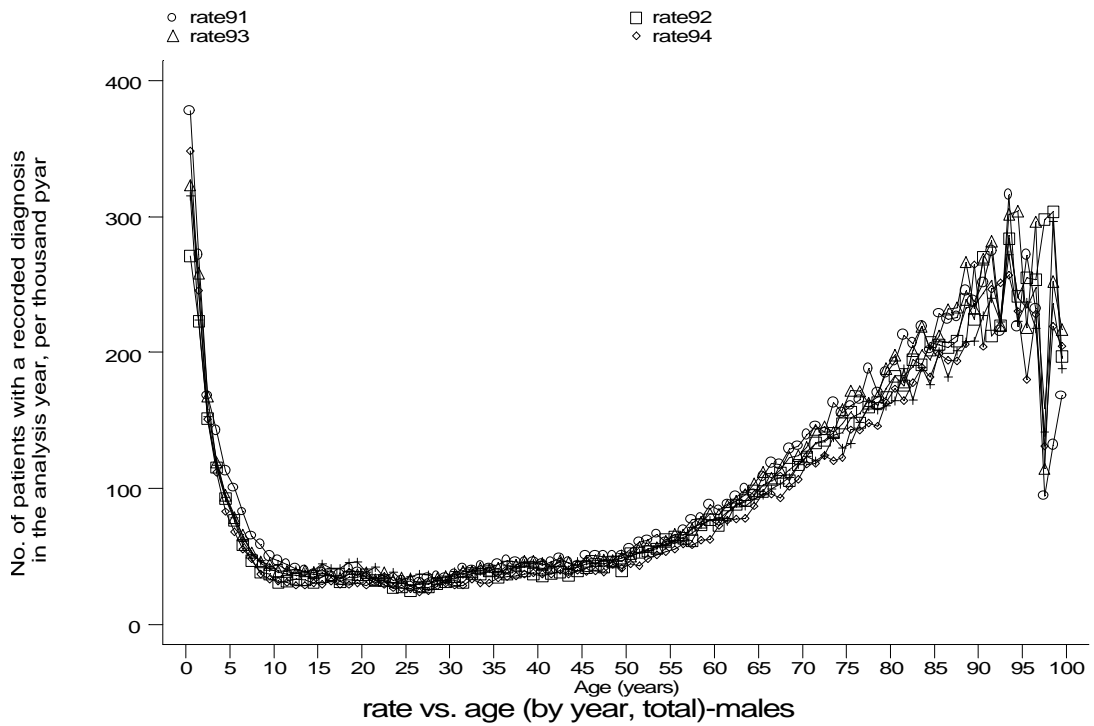
Age-sex distributions, yearly trends and cohort analysis (crude rates)

- GPRD Diagnosis, England 1991-95



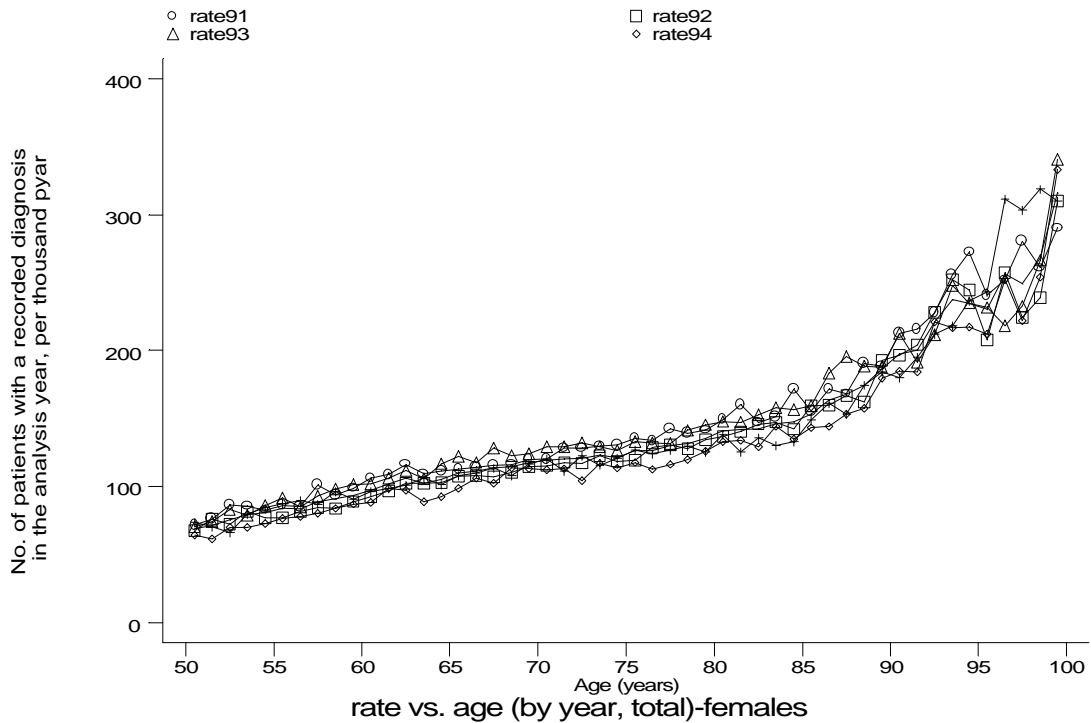
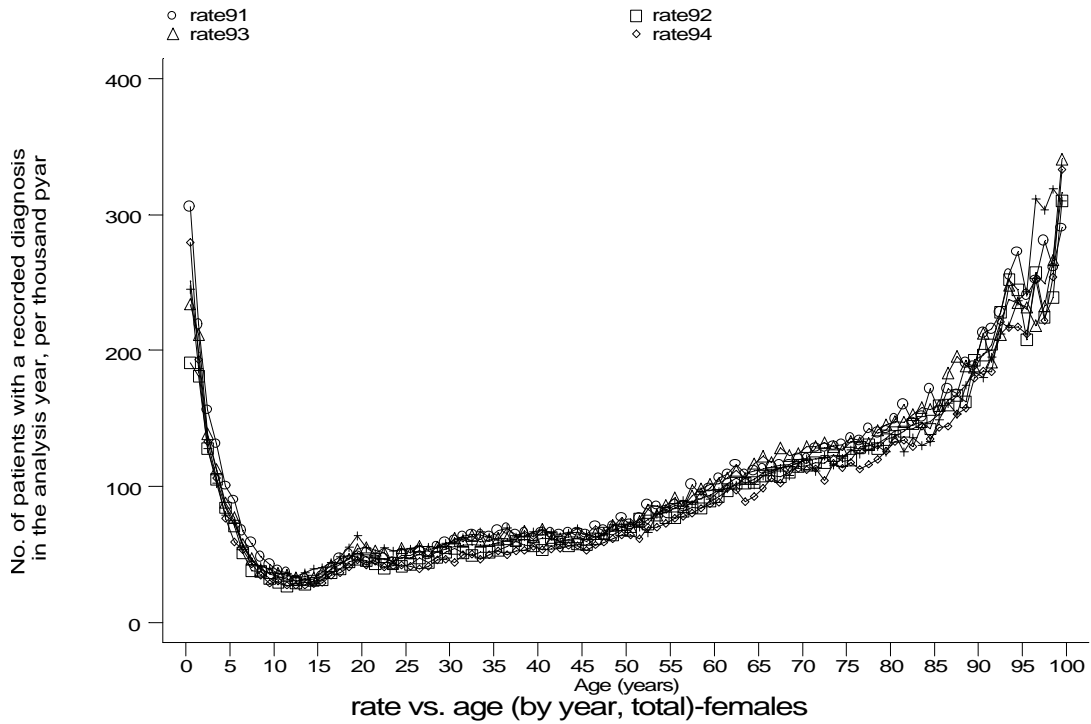
Age-sex distributions, yearly trends and cohort analysis (crude rates)

- GPRD Diagnosis, England 1991-95



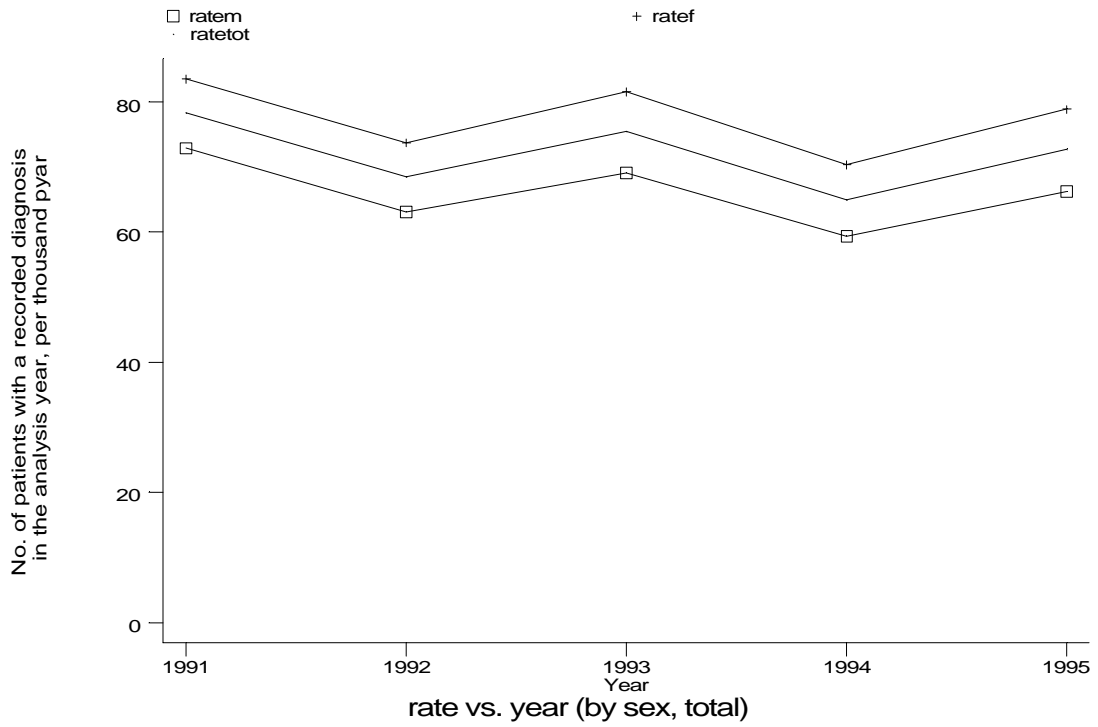
Age-sex distributions, yearly trends and cohort analysis (crude rates)

- GPRD Diagnosis, England 1991-95

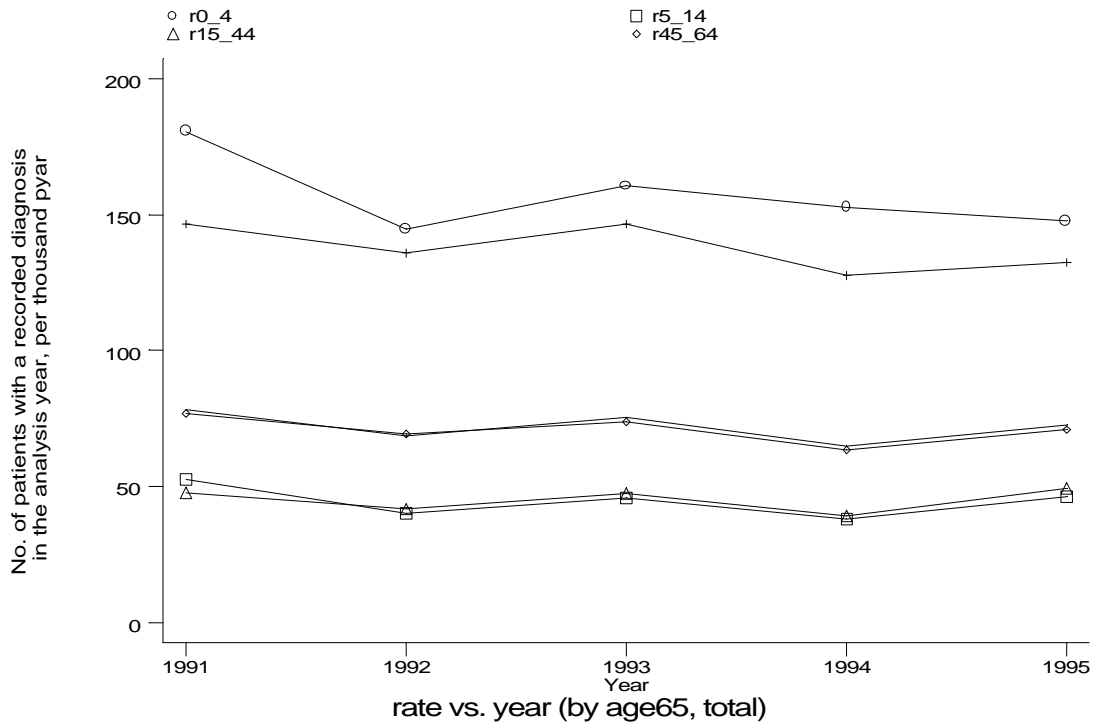


Age-sex distributions, yearly trends and cohort analysis (crude rates)

- GPRD Diagnosis, England 1991-95



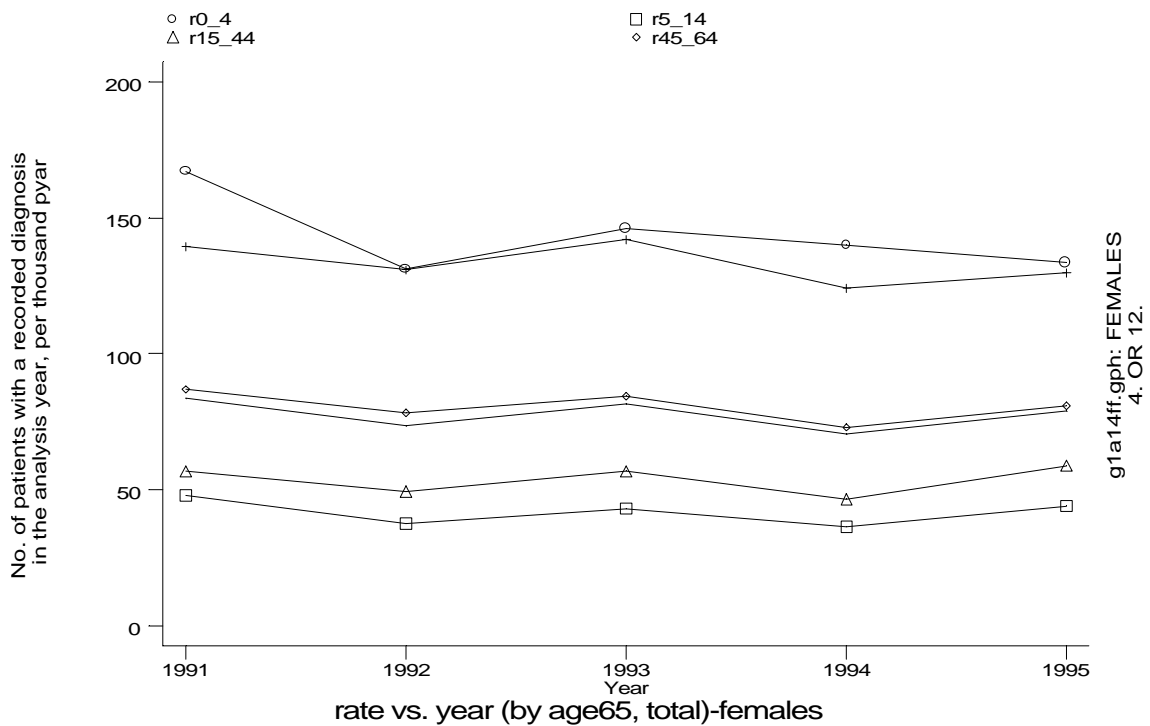
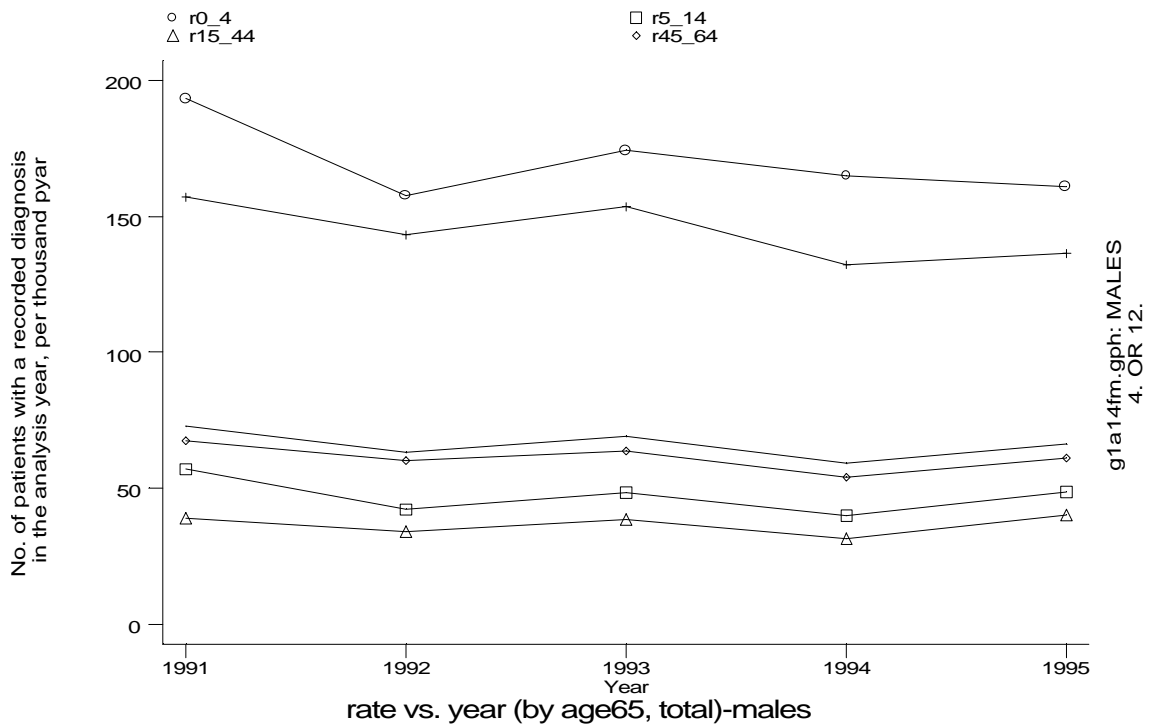
g1a14e.gph
4. OR 12.



g1a14f.gph
4. OR 12.

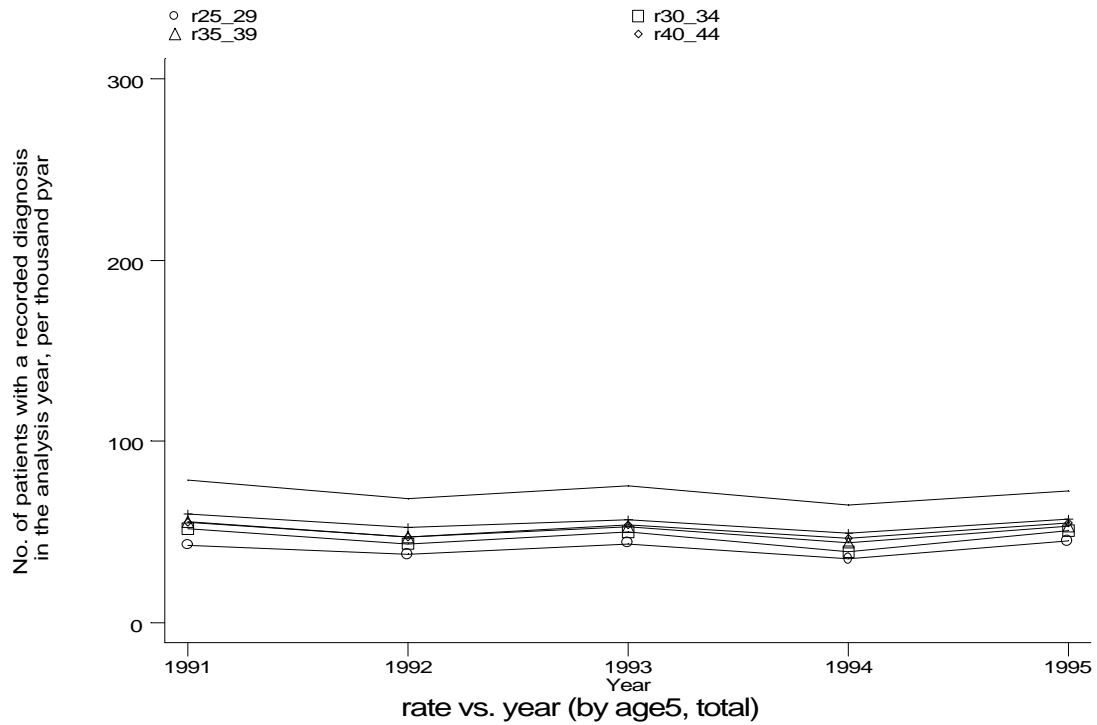
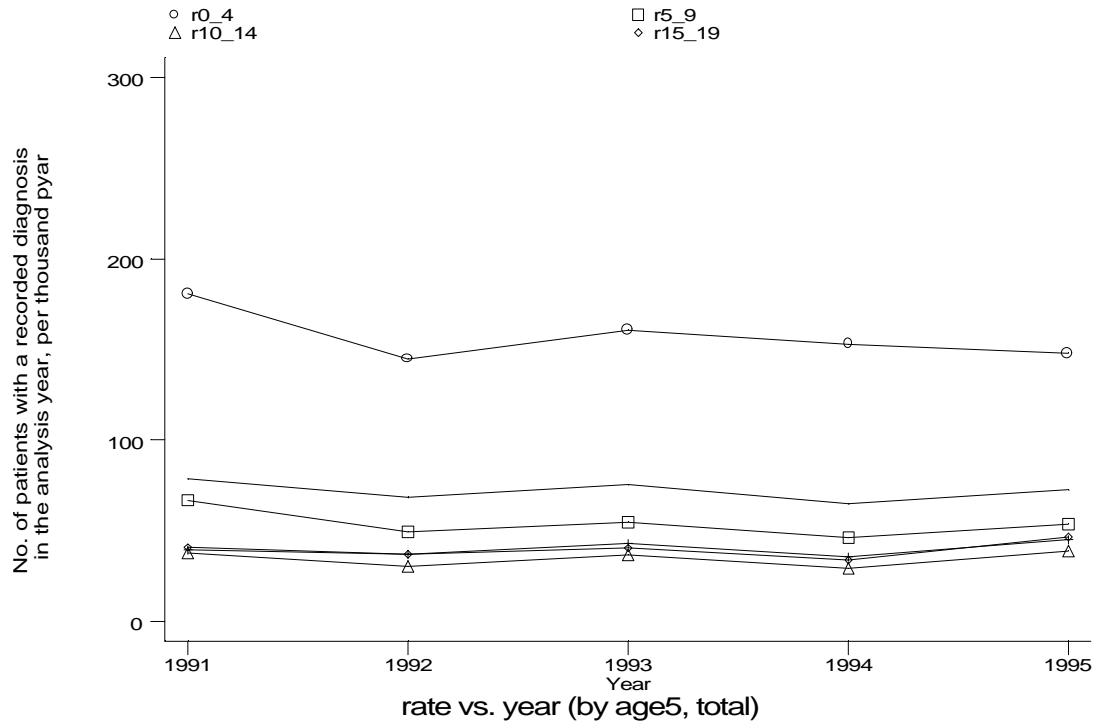
Age-sex distributions, yearly trends and cohort analysis (crude rates)

- GPRD Diagnosis, England 1991-95



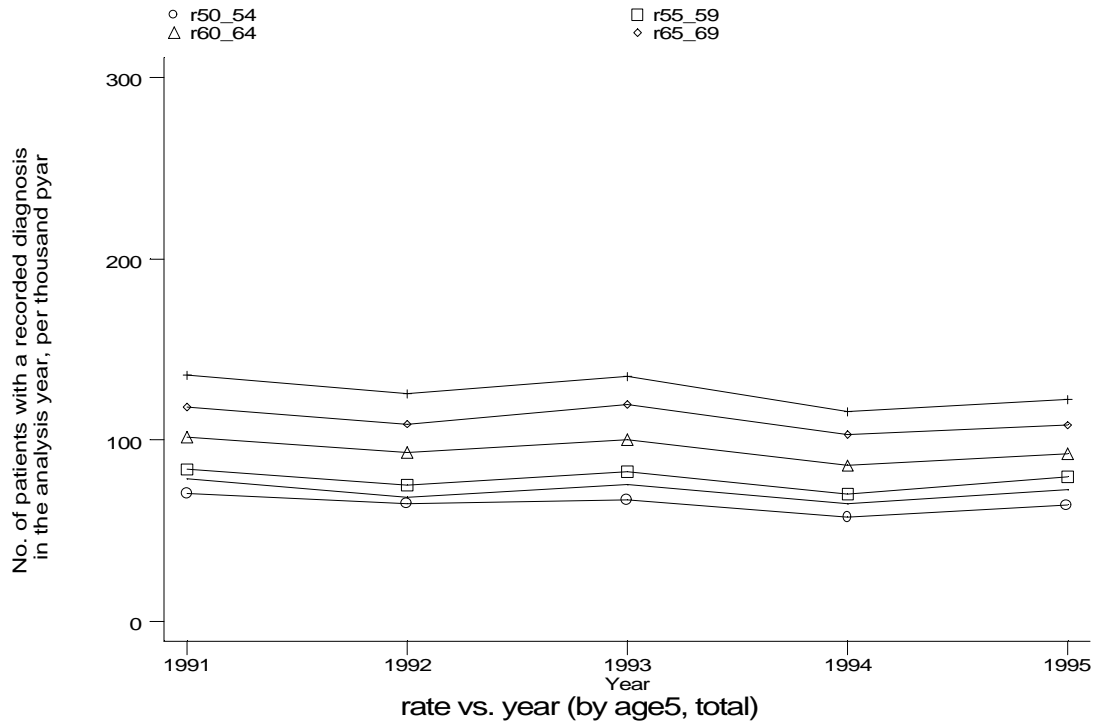
A10 Acute bronchitis or bronchiolitis standard output graphs **A10/ GPRD1/ Page 11 of 23**
Age-sex distributions, yearly trends and cohort analysis (crude rates)

- **GPRD Diagnosis, England 1991-95**

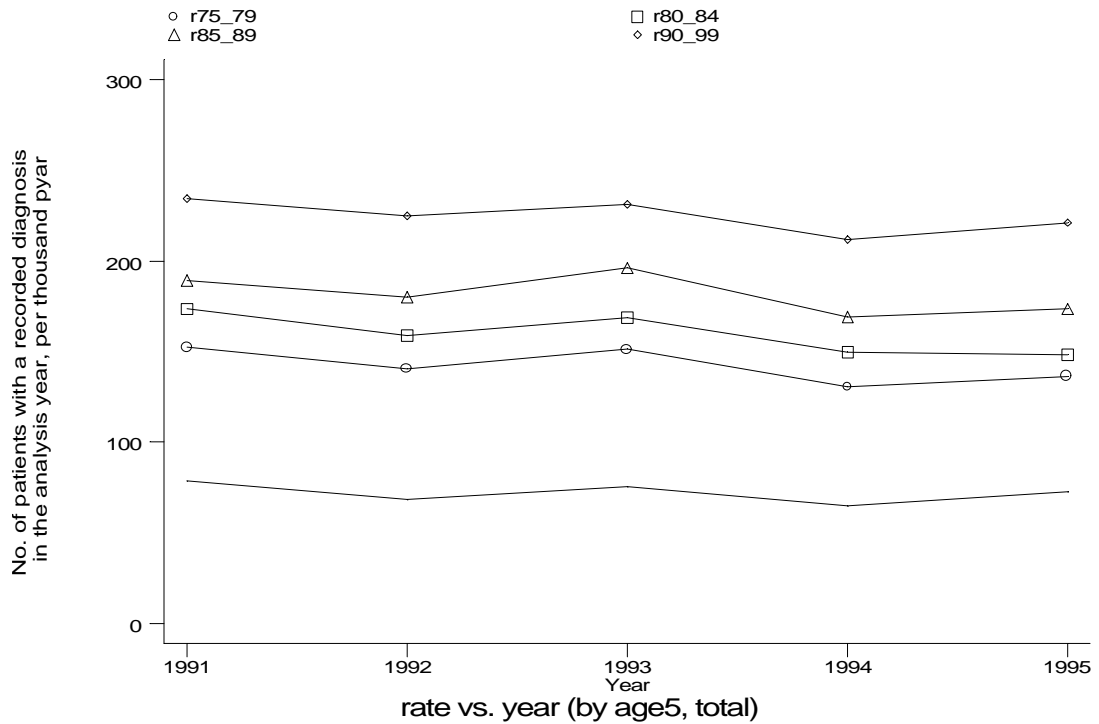


Age-sex distributions, yearly trends and cohort analysis (crude rates)

- GPRD Diagnosis, England 1991-95



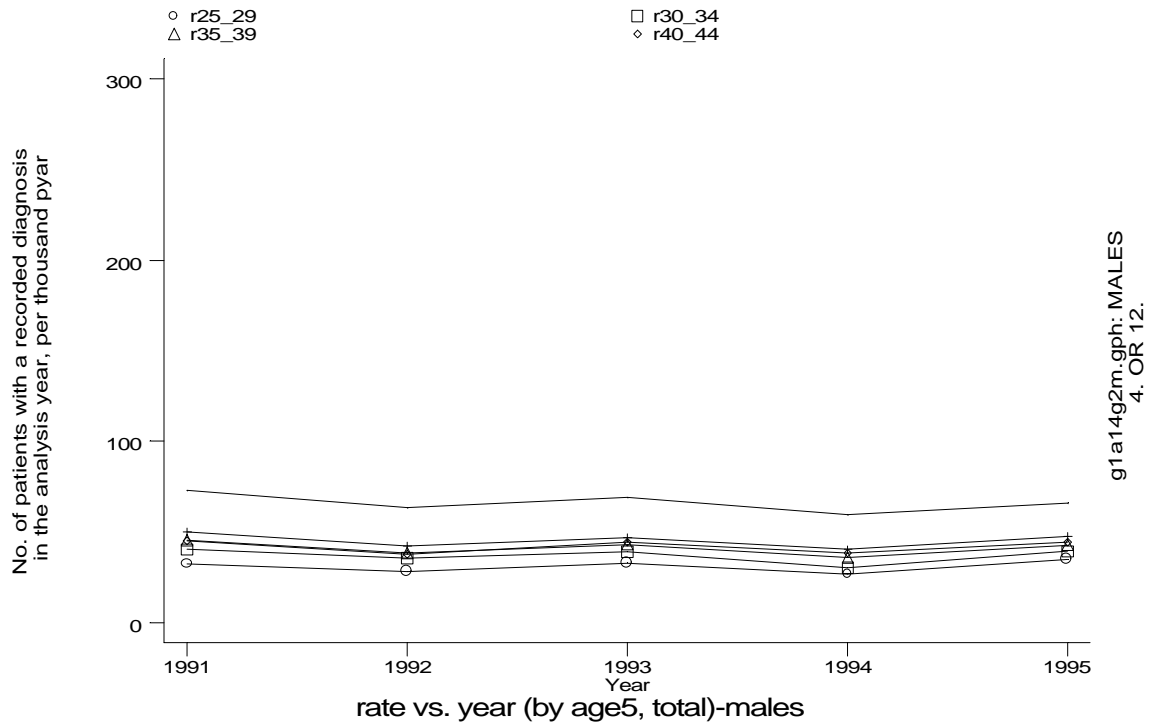
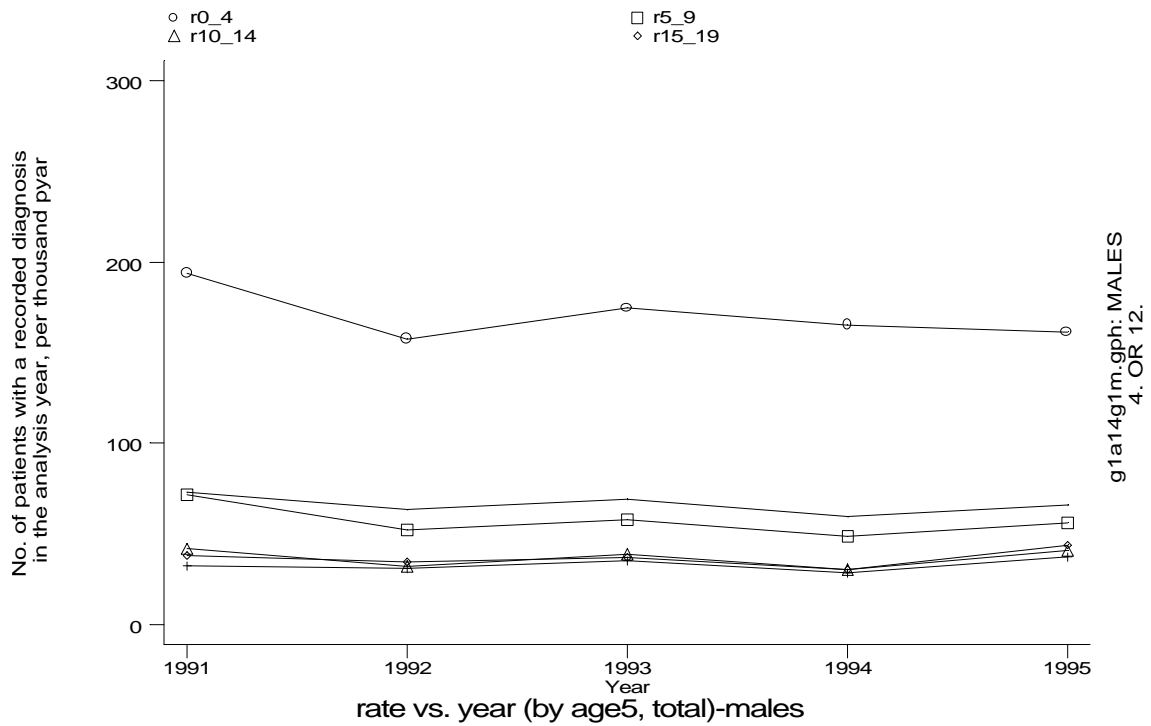
g1a14g3.gph
4. OR 12.



g1a14g4.gph
4. OR 12.

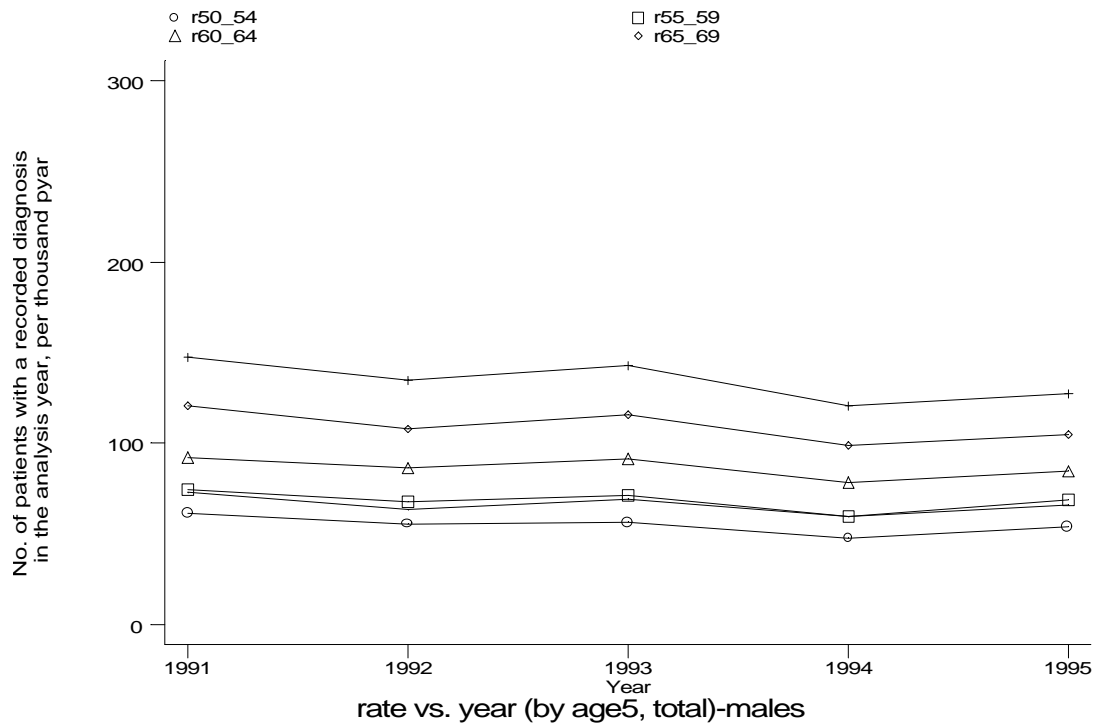
Age-sex distributions, yearly trends and cohort analysis (crude rates)

- GPRD Diagnosis, England 1991-95

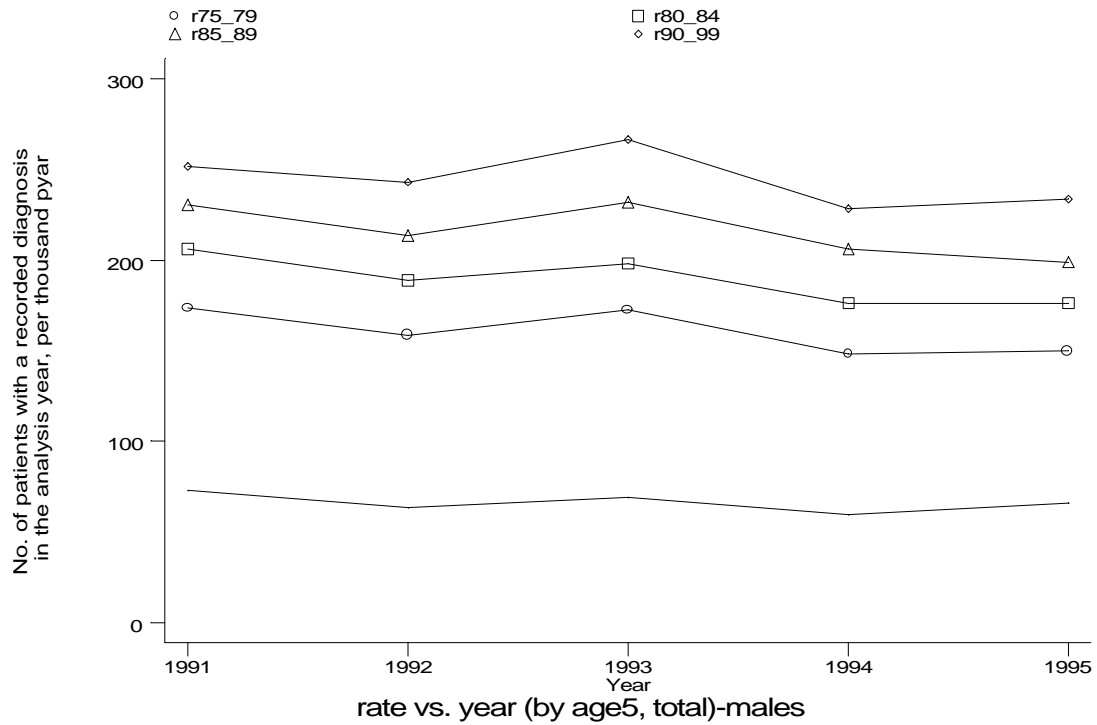


Age-sex distributions, yearly trends and cohort analysis (crude rates)

- GPRD Diagnosis, England 1991-95



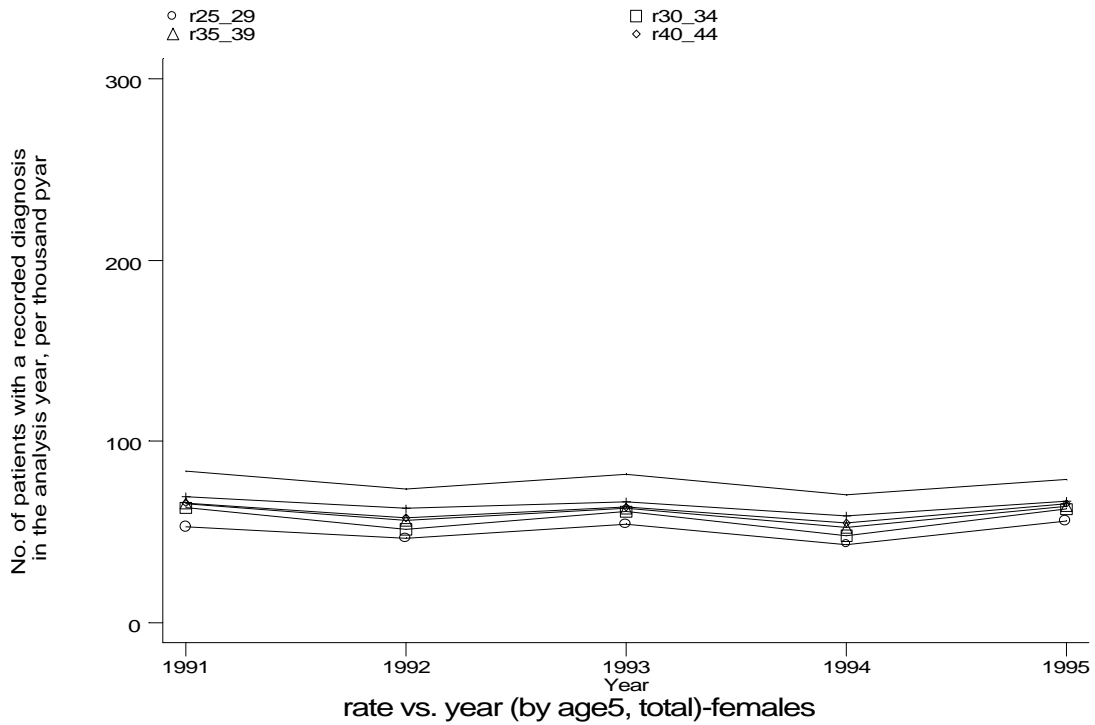
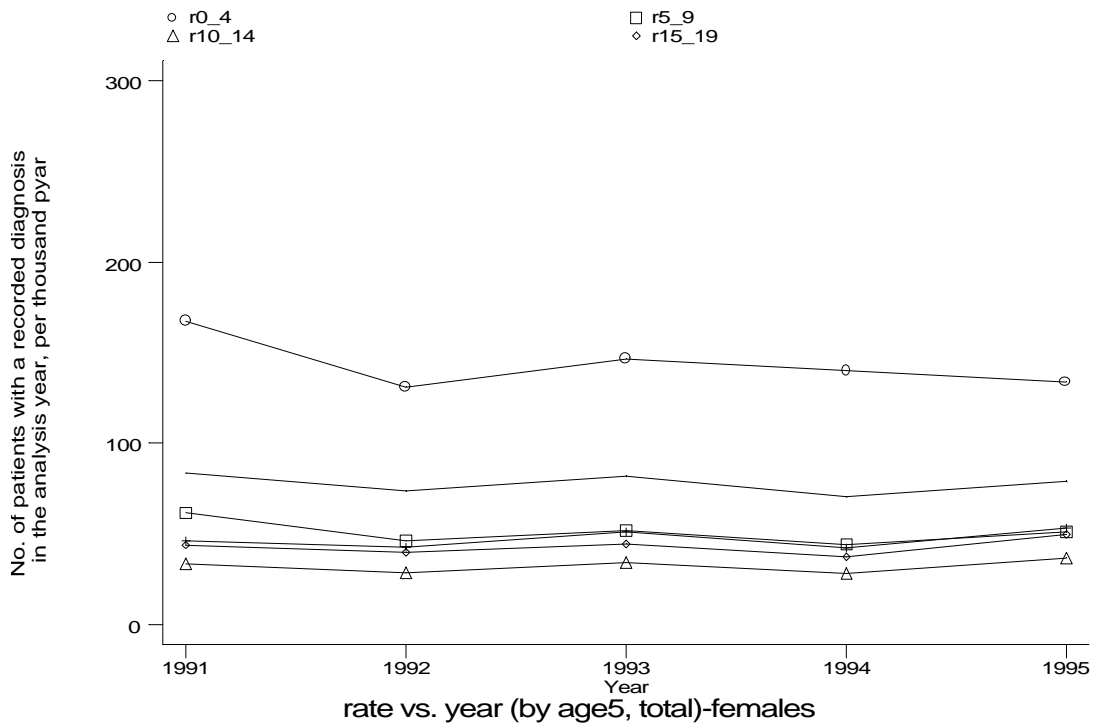
g1a14g3m.gph: MALES
4. OR 12.



g1a14g4m.gph: MALES
4. OR 12.

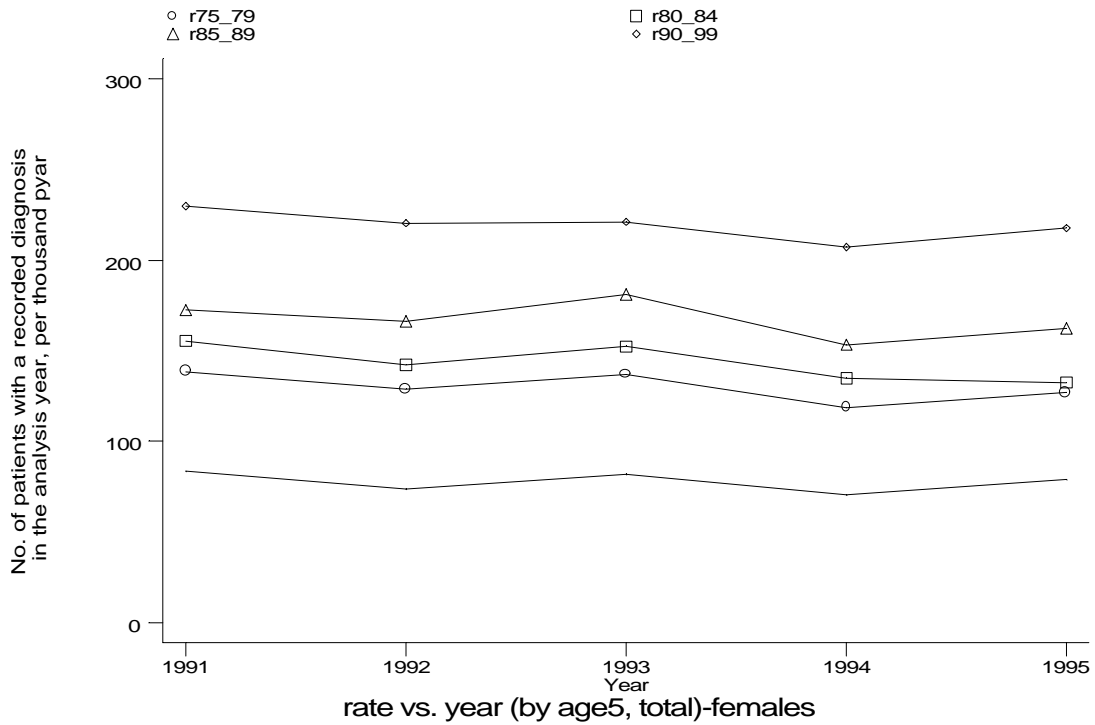
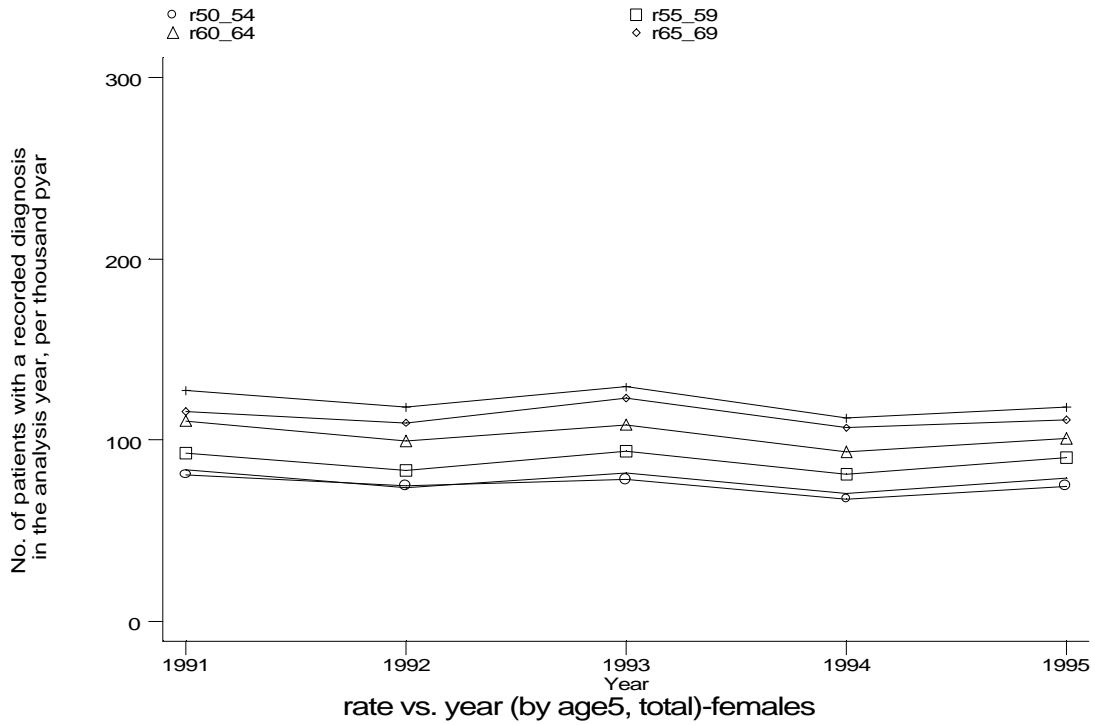
Age-sex distributions, yearly trends and cohort analysis (crude rates)

- GPRD Diagnosis, England 1991-95



Age-sex distributions, yearly trends and cohort analysis (crude rates)

- GPRD Diagnosis, England 1991-95

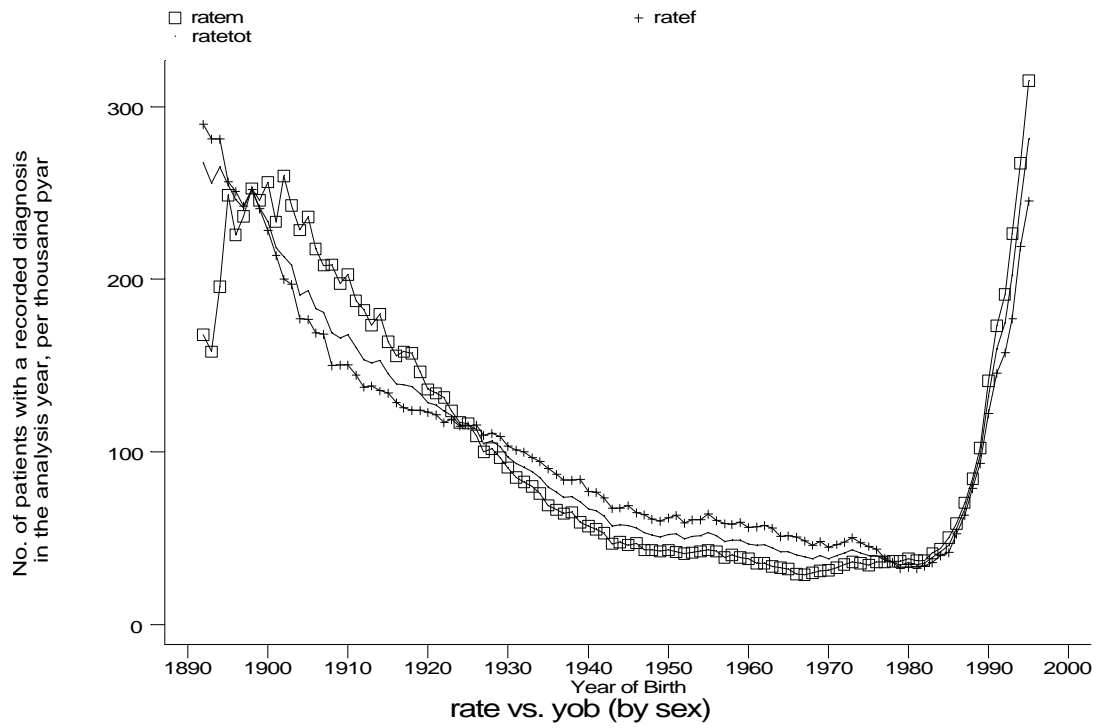


g1a14g3f.gph: FEMALES
4. OR 12.

g1a14g4f.gph: FEMALES
4. OR 12.

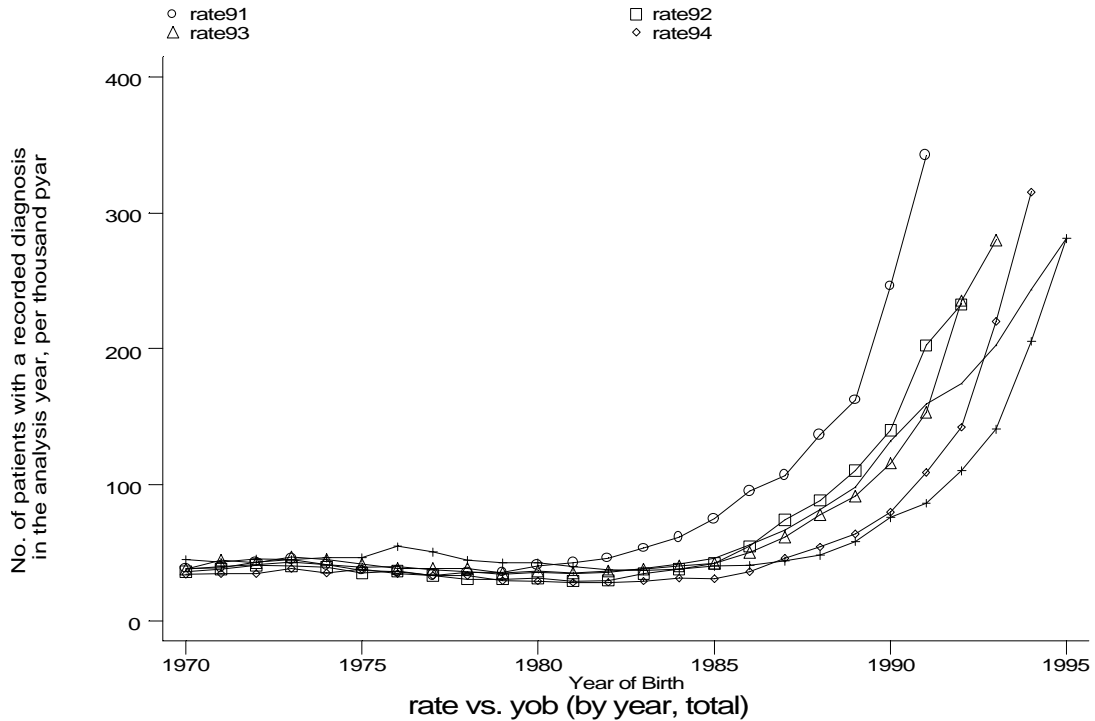
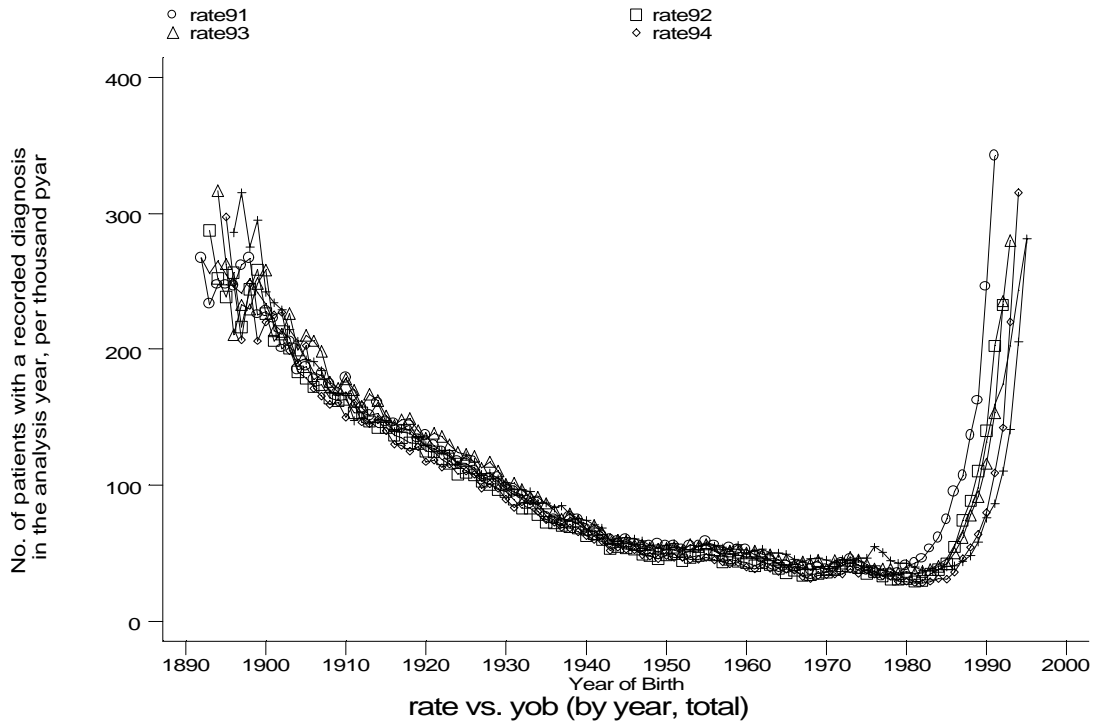
Age-sex distributions, yearly trends and cohort analysis (crude rates)

- GPRD Diagnosis, England 1991-95



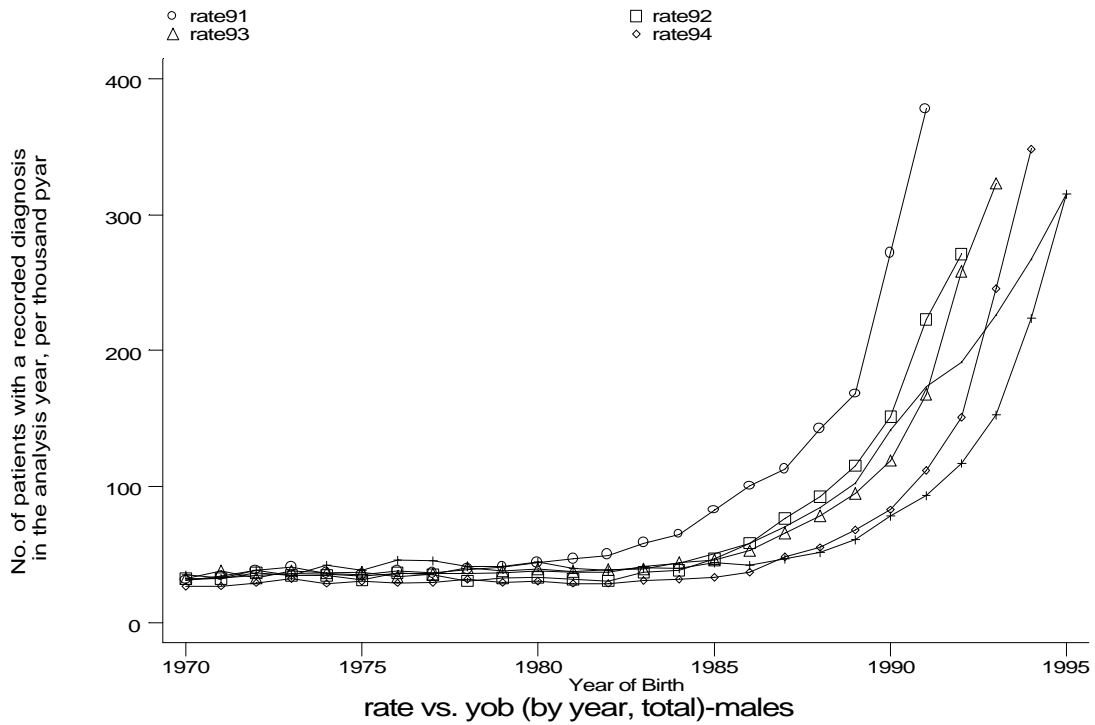
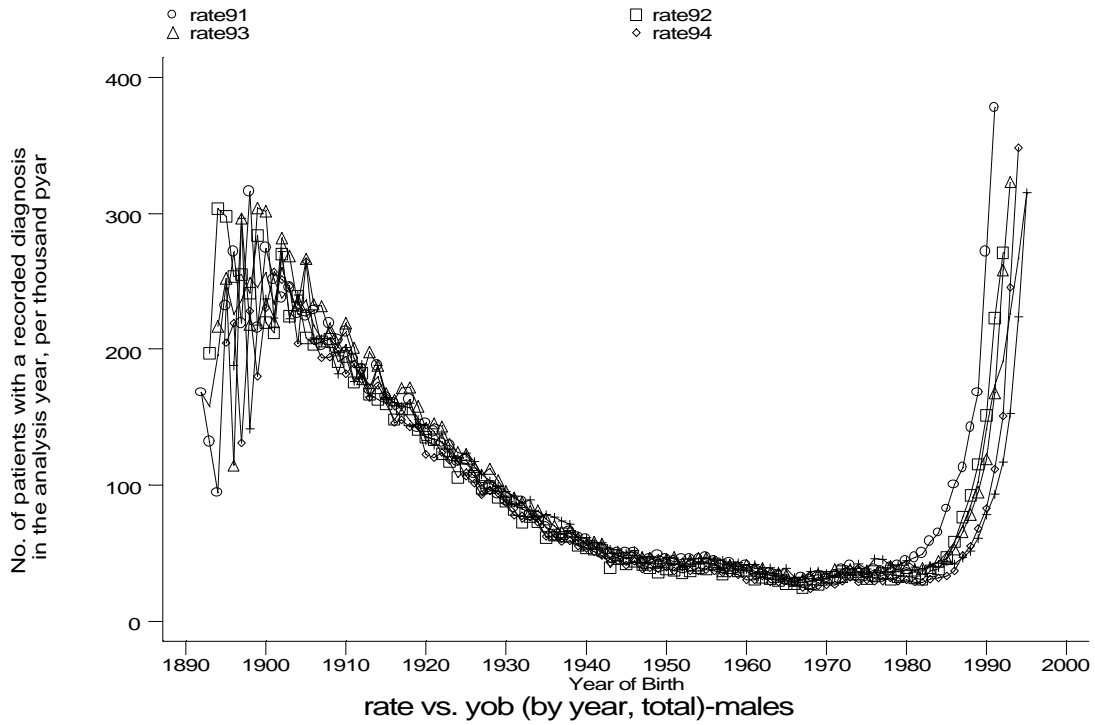
Age-sex distributions, yearly trends and cohort analysis (crude rates)

- GPRD Diagnosis, England 1991-95



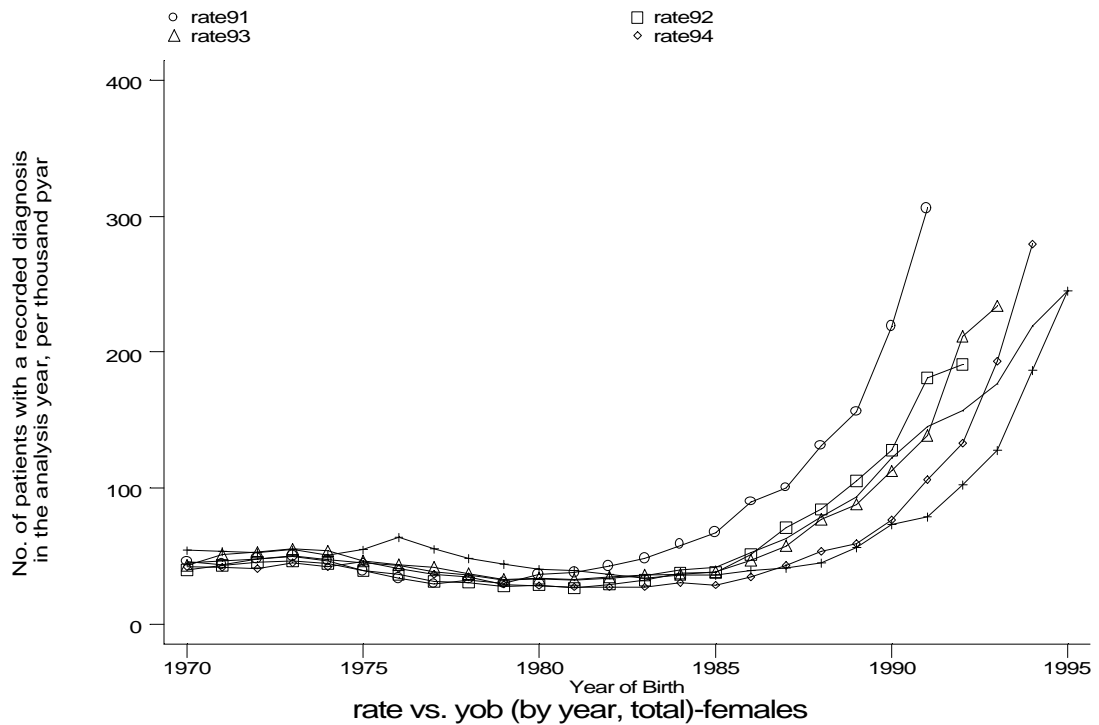
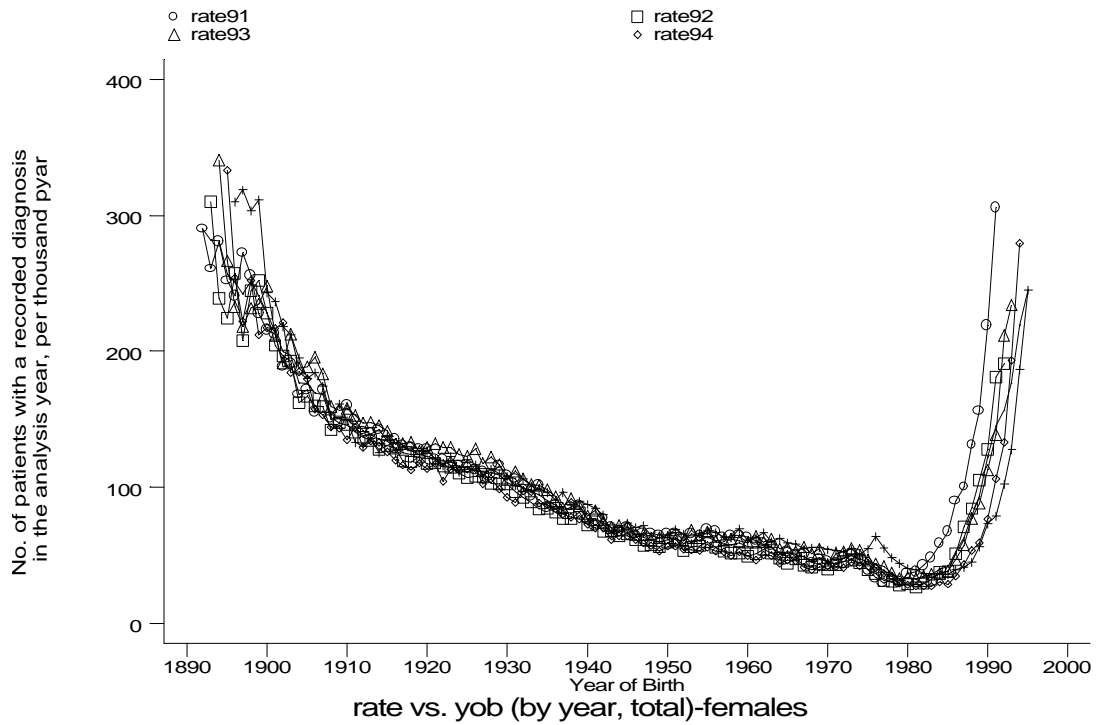
Age-sex distributions, yearly trends and cohort analysis (crude rates)

- GPRD Diagnosis, England 1991-95

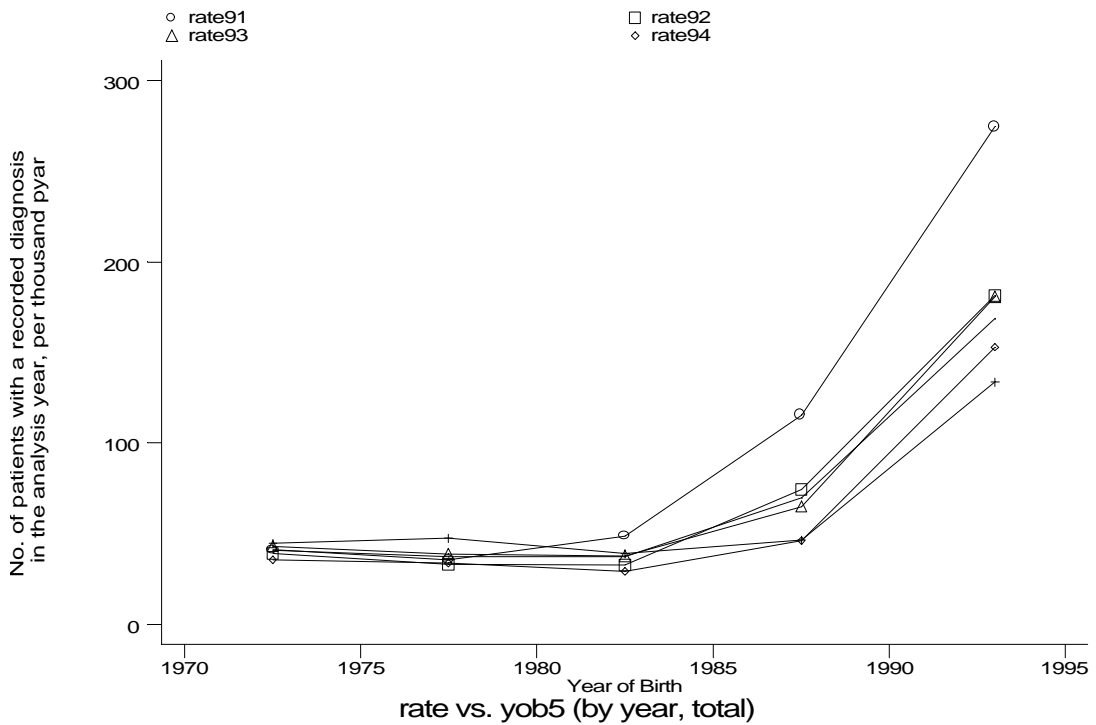
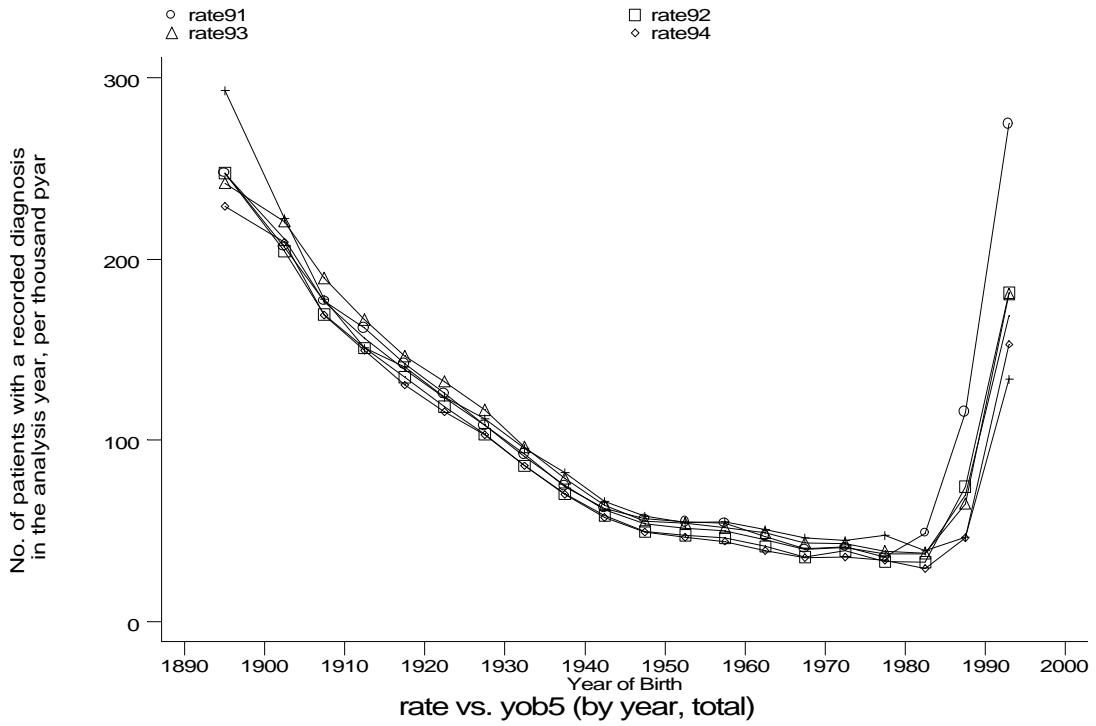


Age-sex distributions, yearly trends and cohort analysis (crude rates)

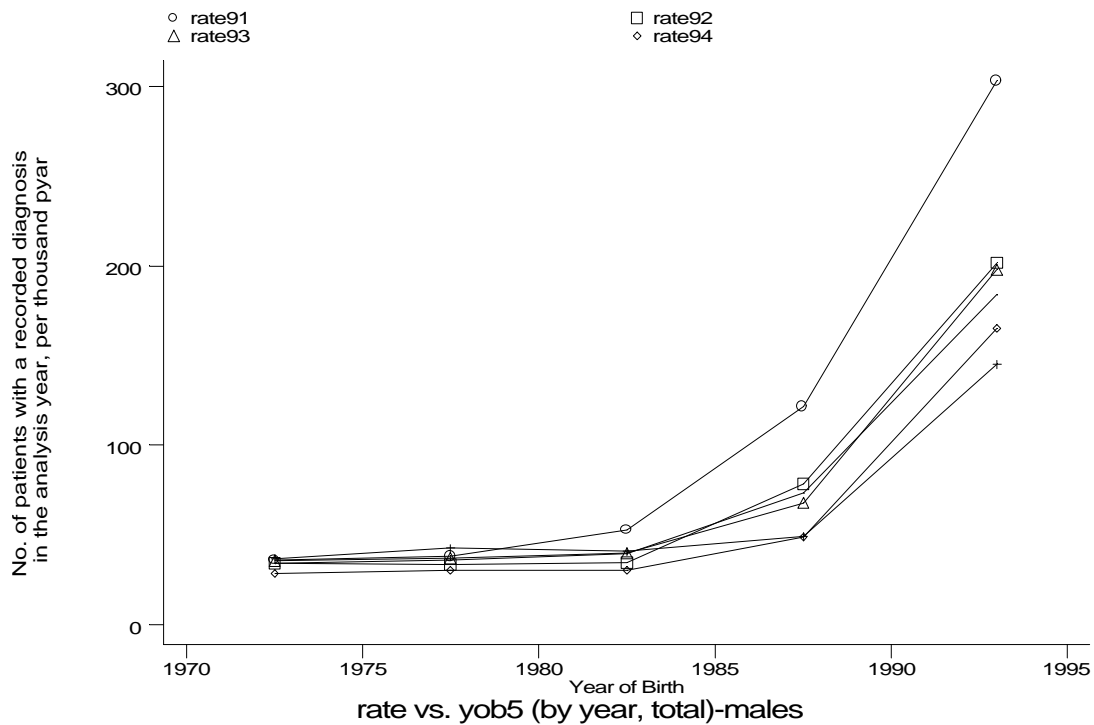
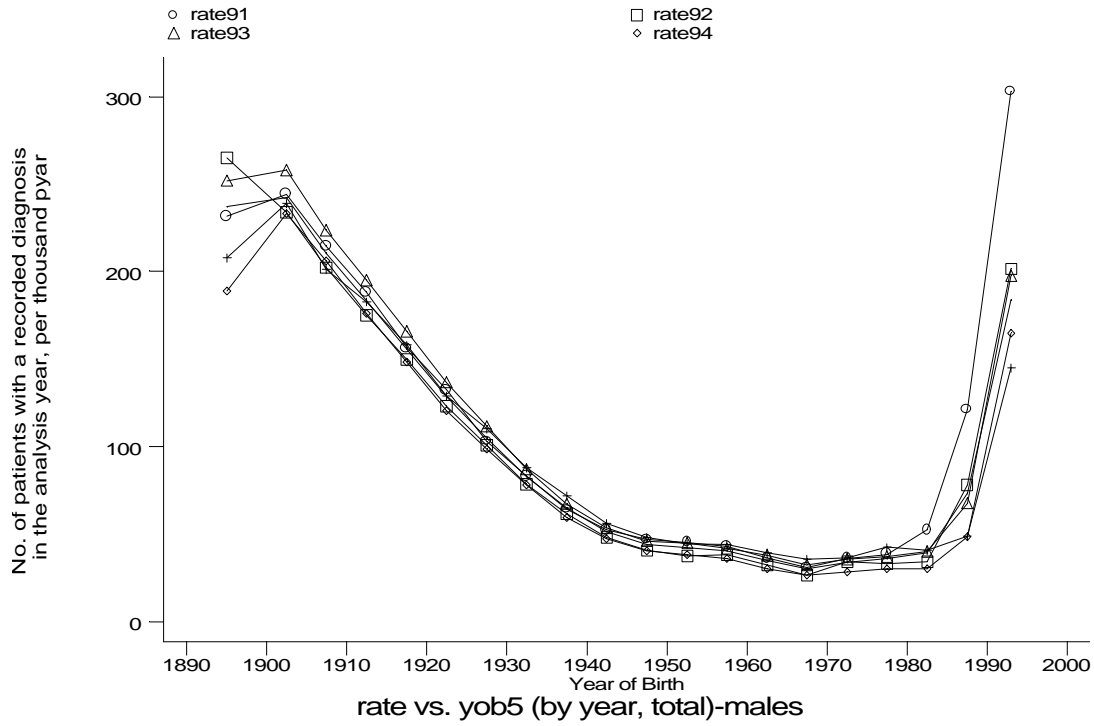
- GPRD Diagnosis, England 1991-95



A10 Acute bronchitis or bronchiolitis standard output graphs **A10/ GPRD1/ Page 21 of 23**
Age-sex distributions, yearly trends and cohort analysis (crude rates)
 • **GPRD Diagnosis, England 1991-95**



A10 Acute bronchitis or bronchiolitis standard output graphs **A10/ GPRD1/ Page 22 of 23**
Age-sex distributions, yearly trends and cohort analysis (crude rates)
 • **GPRD Diagnosis, England 1991-95**



A10 Acute bronchitis or bronchiolitis standard output graphs **A10/ GPRD1/ Page 23 of 23**
Age-sex distributions, yearly trends and cohort analysis (crude rates)
 • **GPRD Diagnosis, England 1991-95**

