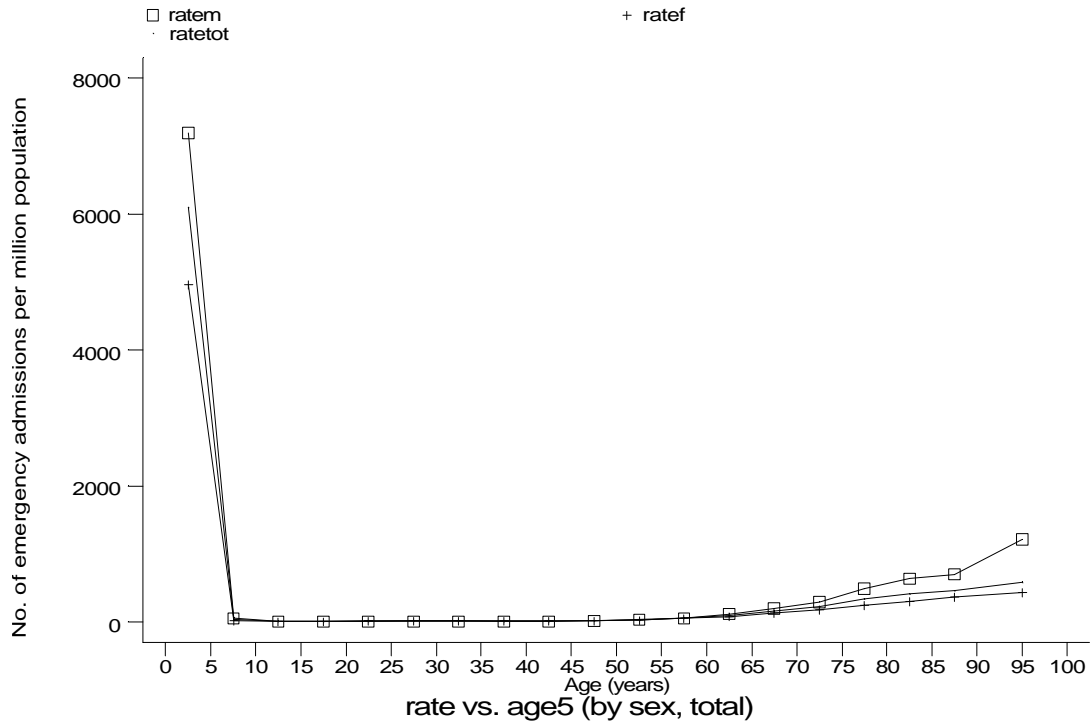
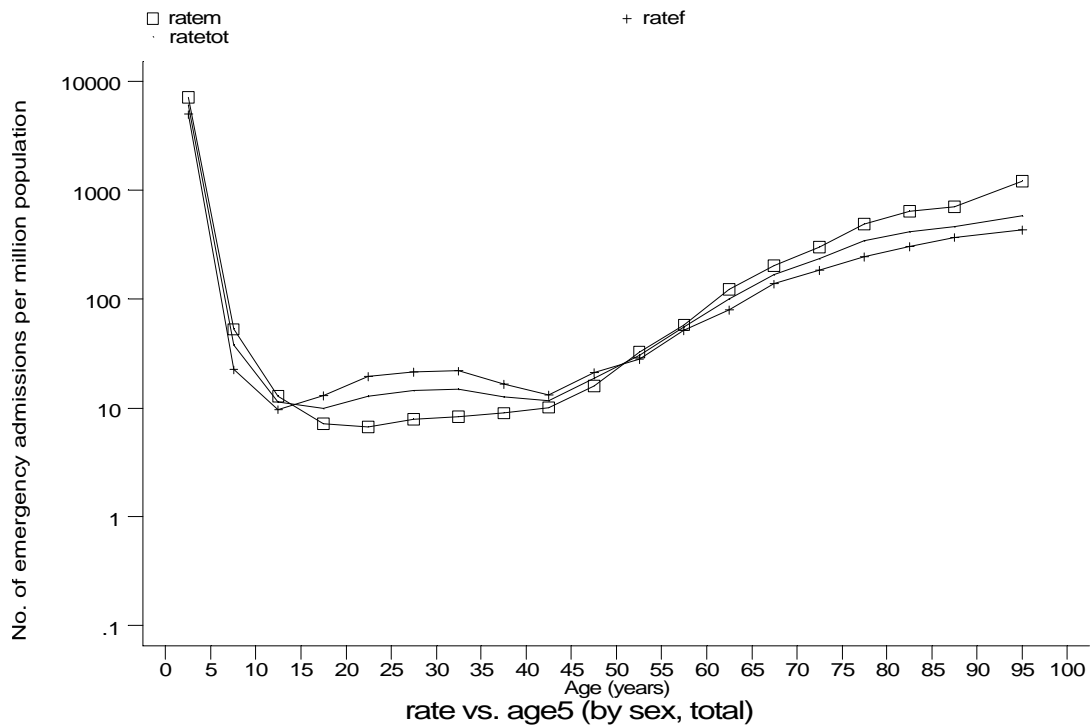


Age-sex distributions, yearly trends and cohort analysis (crude rates)

- HES Emergency admissions, England 1991-94



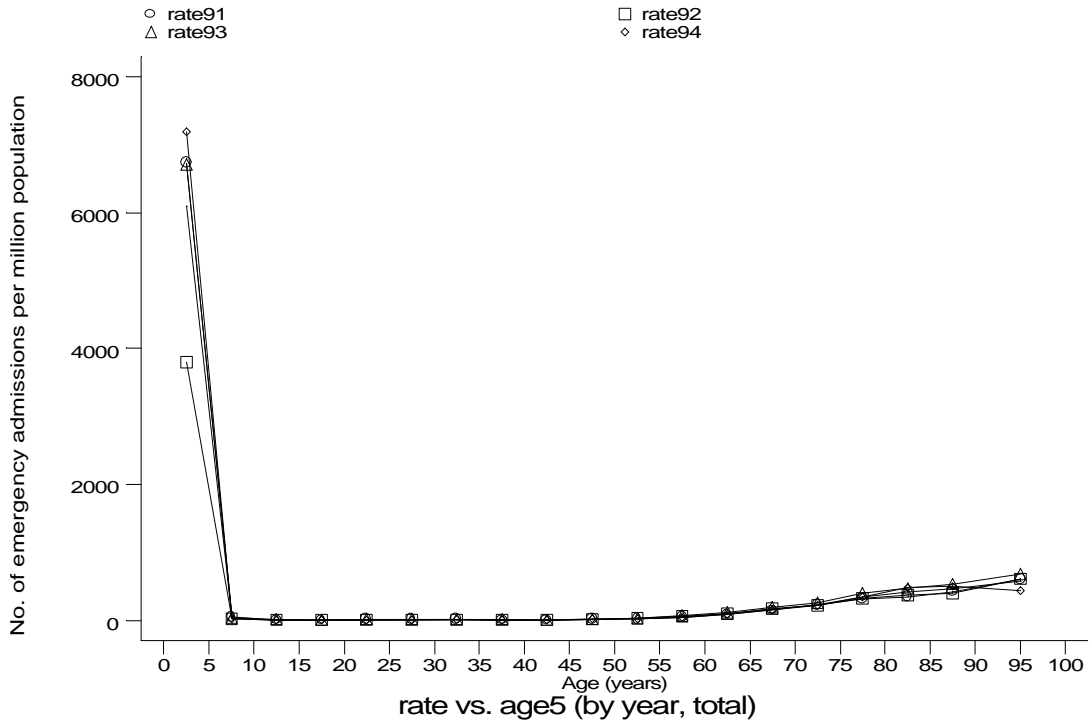
h1e4a1.gph
4. Ac bronchitis or bronchiolitis



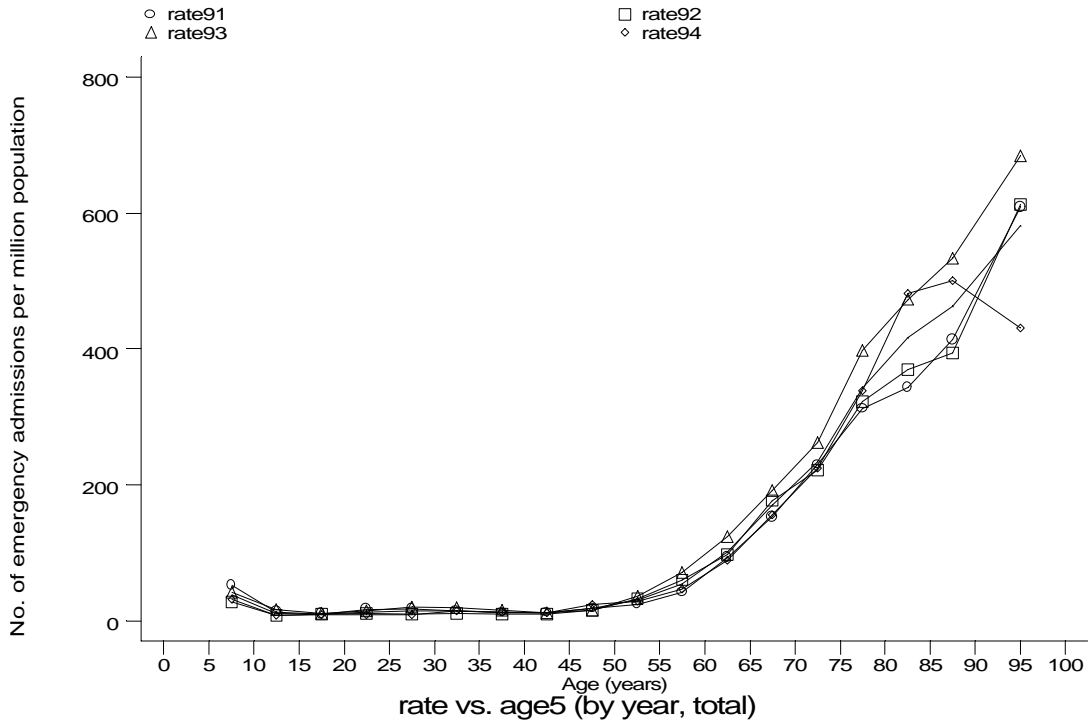
h1e4a2.gph
4. Ac bronchitis or bronchiolitis

Age-sex distributions, yearly trends and cohort analysis (crude rates)

- HES Emergency admissions, England 1991-94



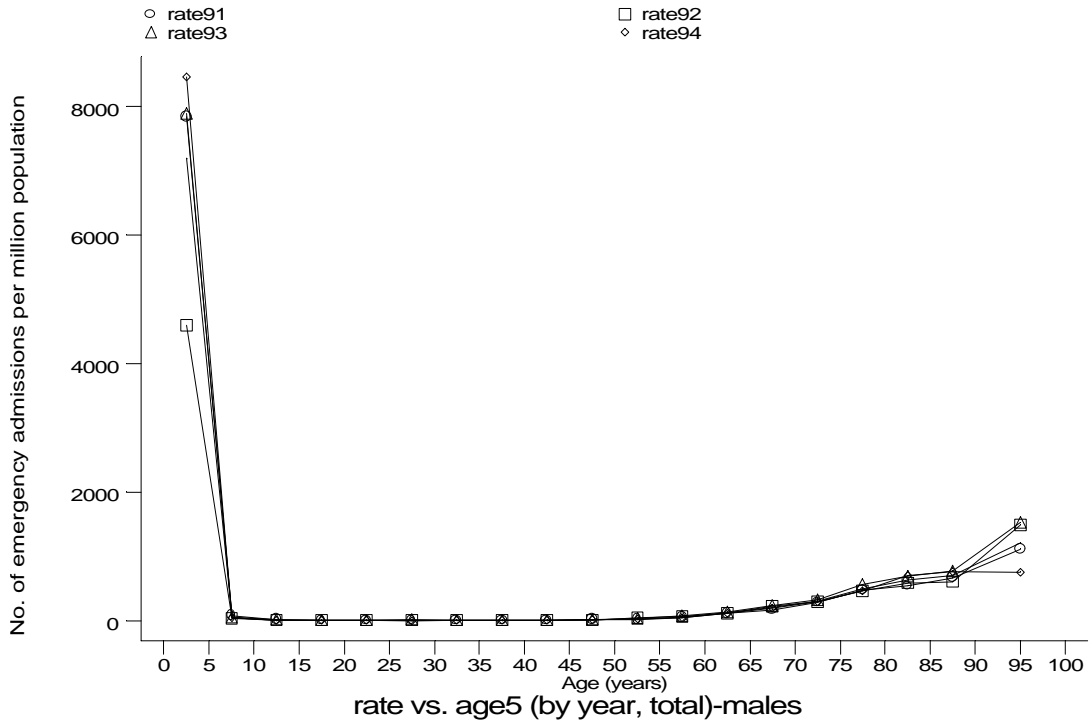
h1e4b1.gph
4. Ac bronchitis or bronchiolitis



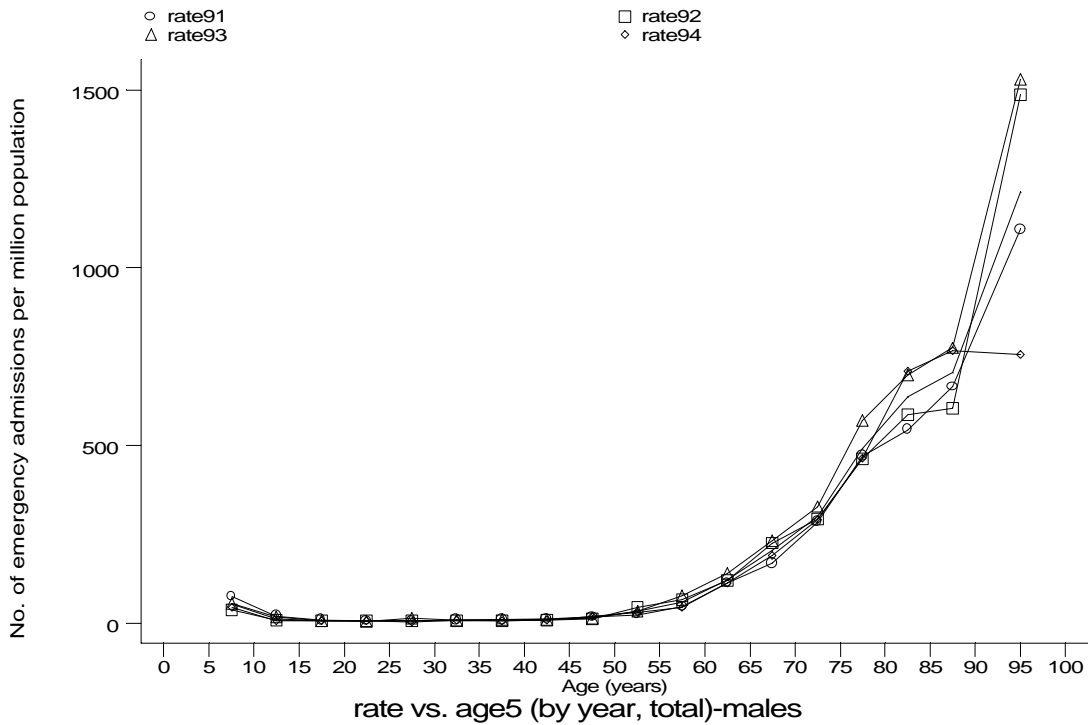
h1e4b2.gph
4. Ac bronchitis or bronchiolitis

Age-sex distributions, yearly trends and cohort analysis (crude rates)

- HES Emergency admissions, England 1991-94

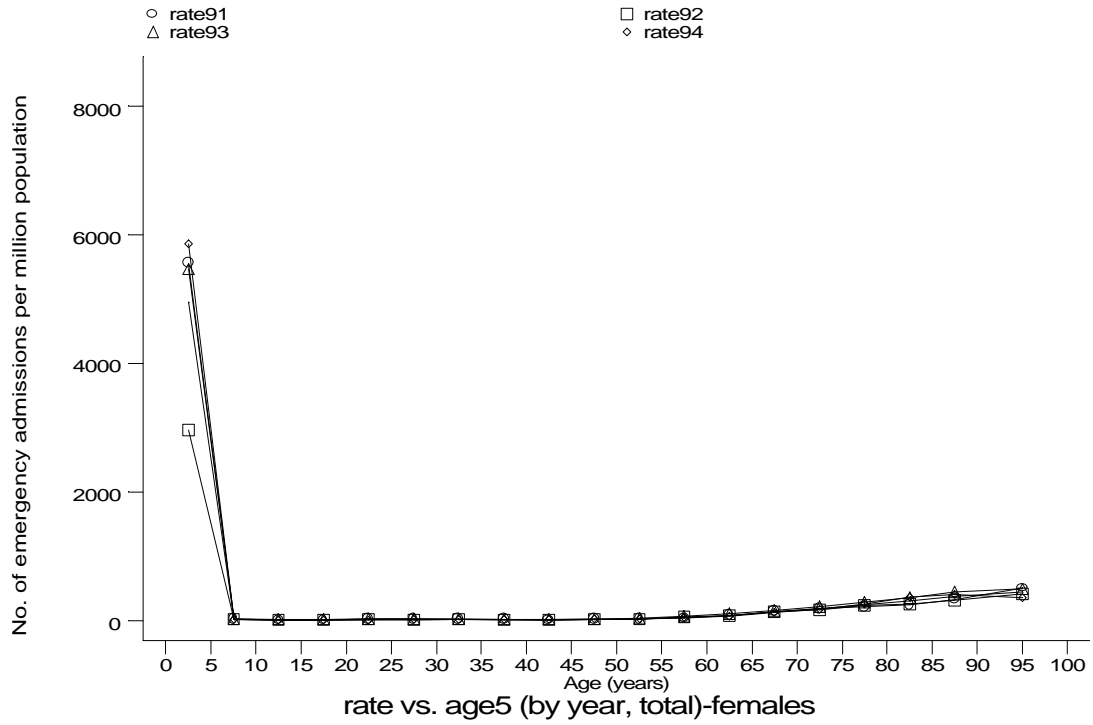


h1e4b1m.gph: MALES
4. Ac bronchitis or bronchiolitis

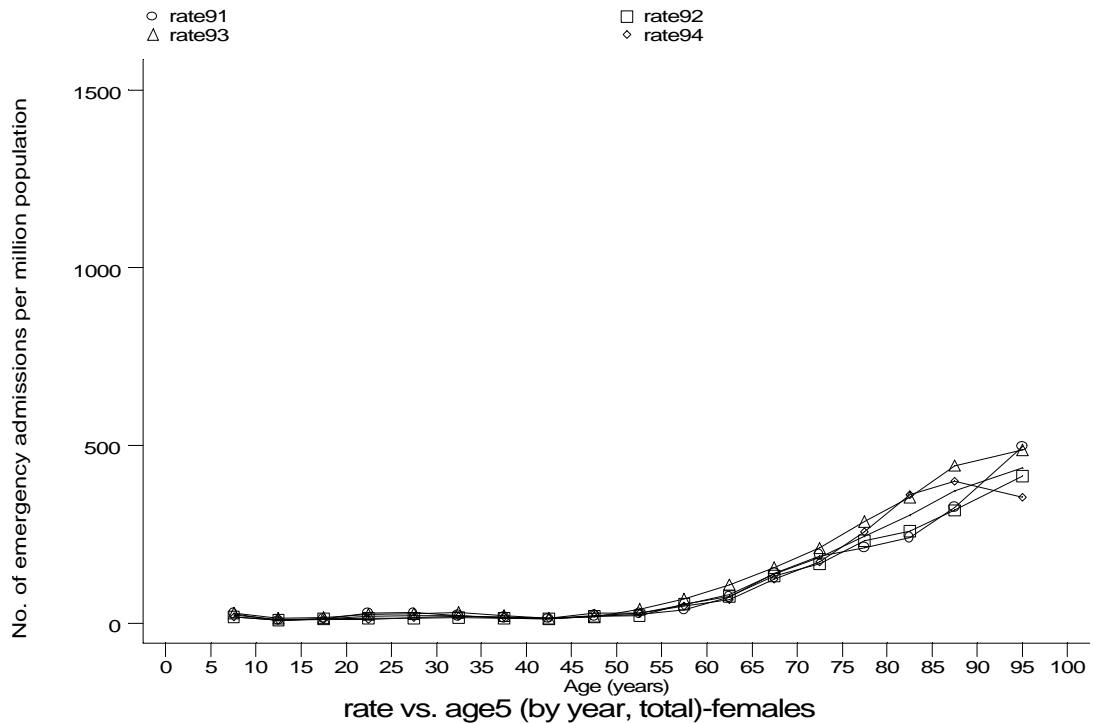


h1e4b2m.gph: MALES
4. Ac bronchitis or bronchiolitis

- HES Emergency admissions, England 1991-94



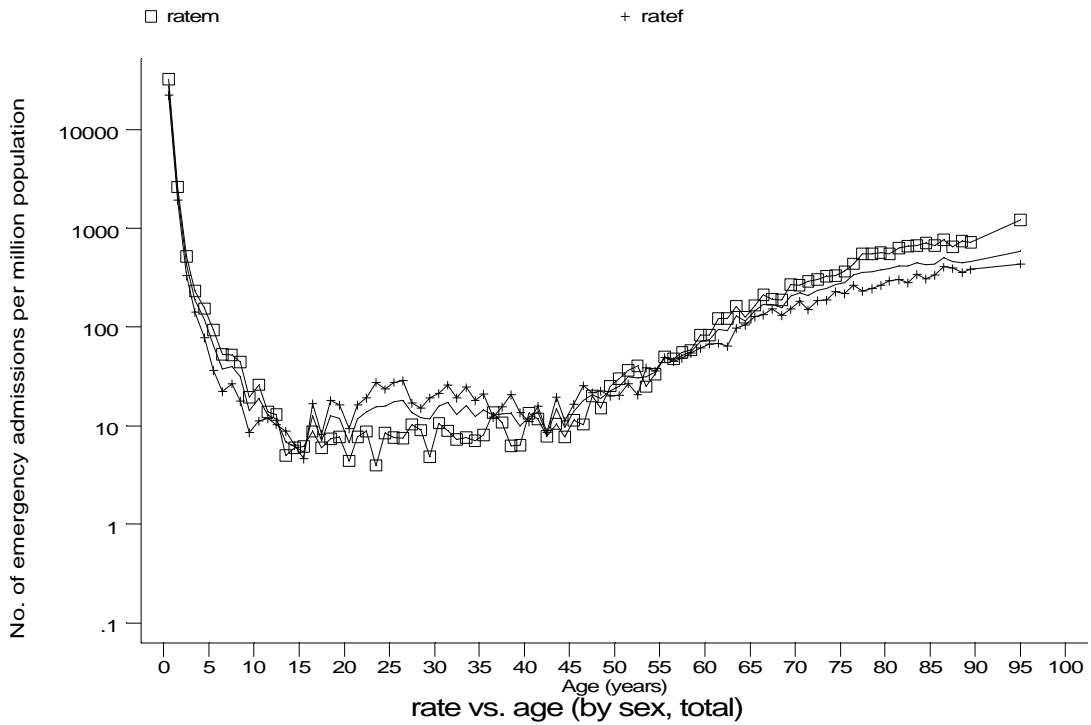
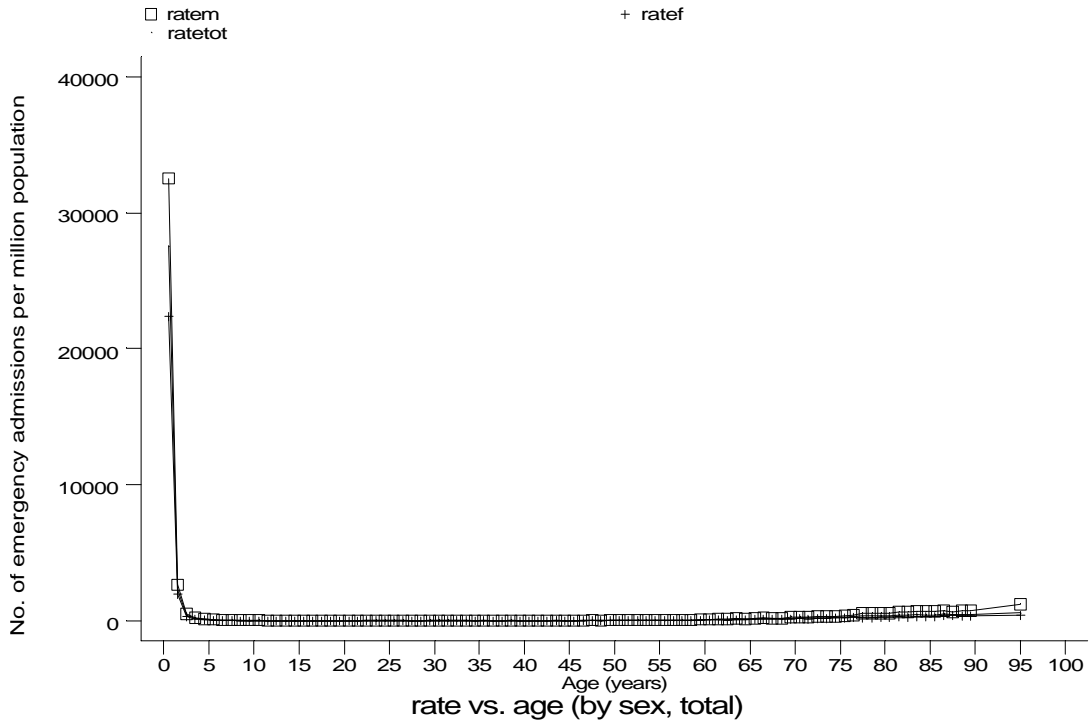
h1e4b1f.gph: FEMALES
 4. Ac bronchitis or bronchiolitis



h1e4b2f.gph: FEMALES
 4. Ac bronchitis or bronchiolitis

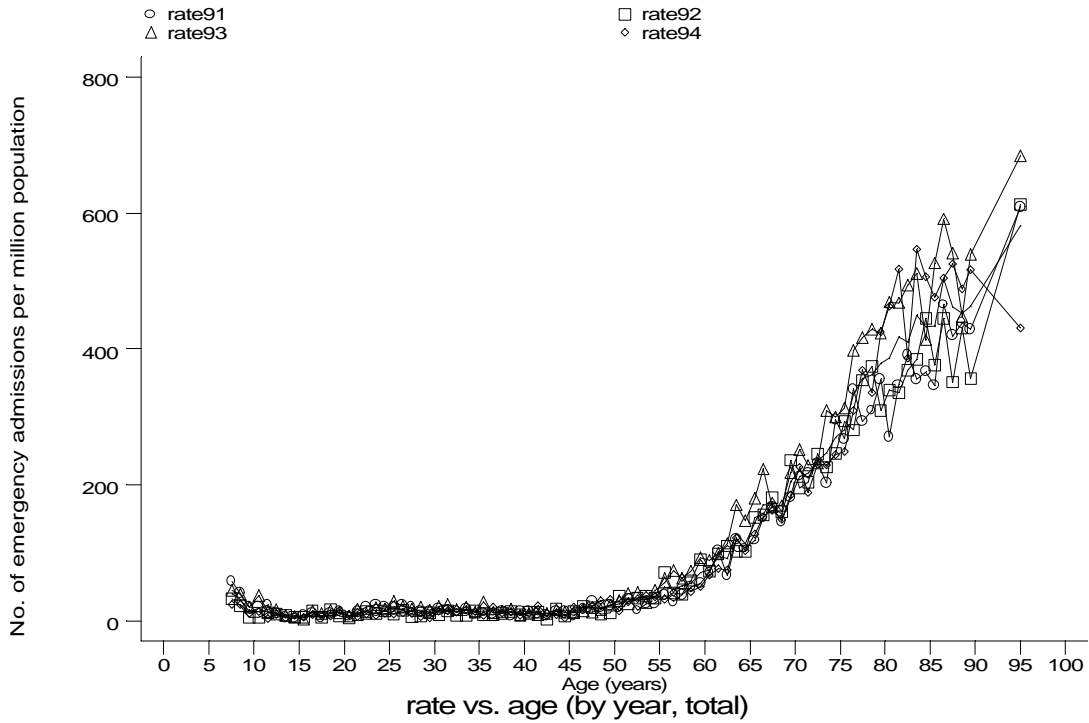
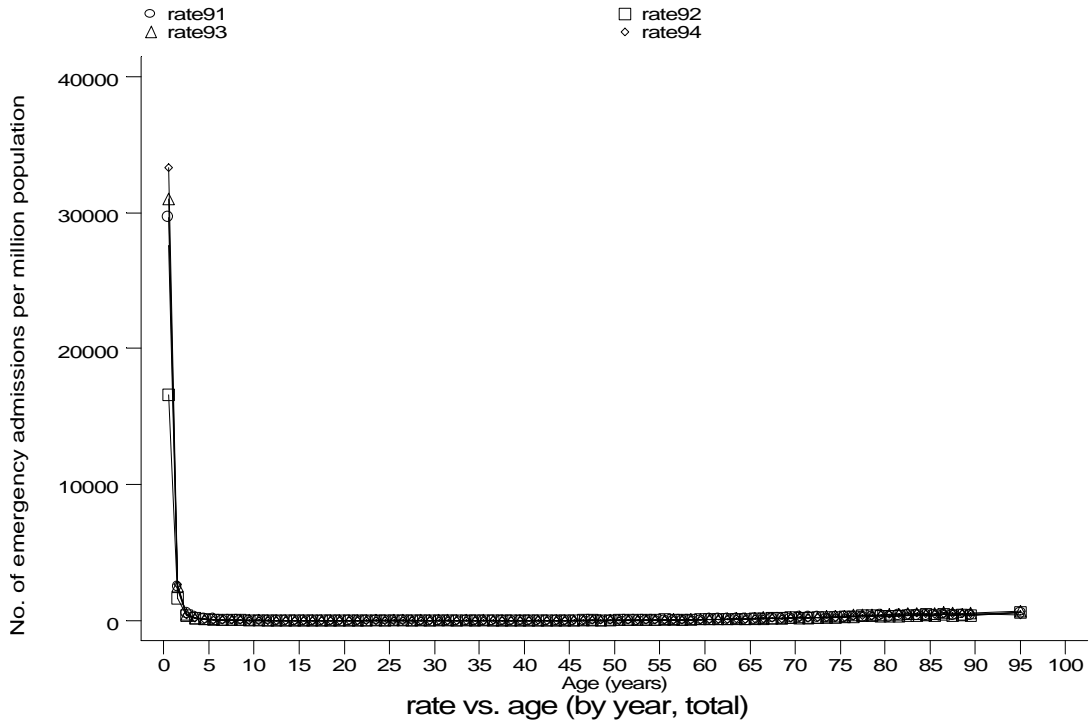
Age-sex distributions, yearly trends and cohort analysis (crude rates)

- HES Emergency admissions, England 1991-94



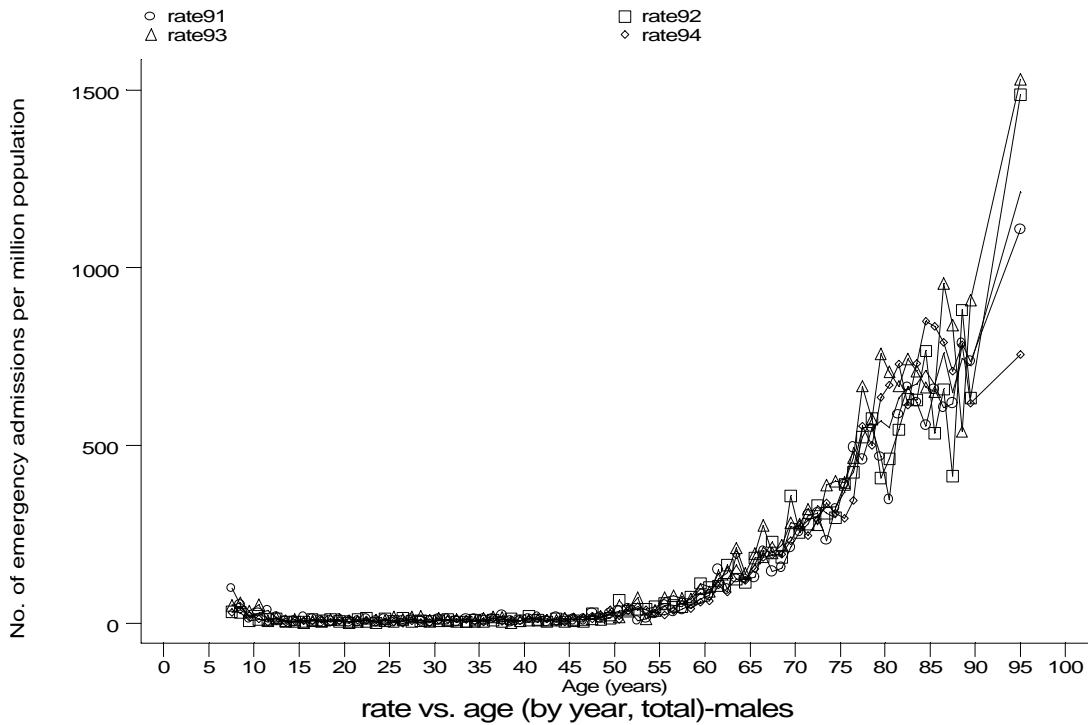
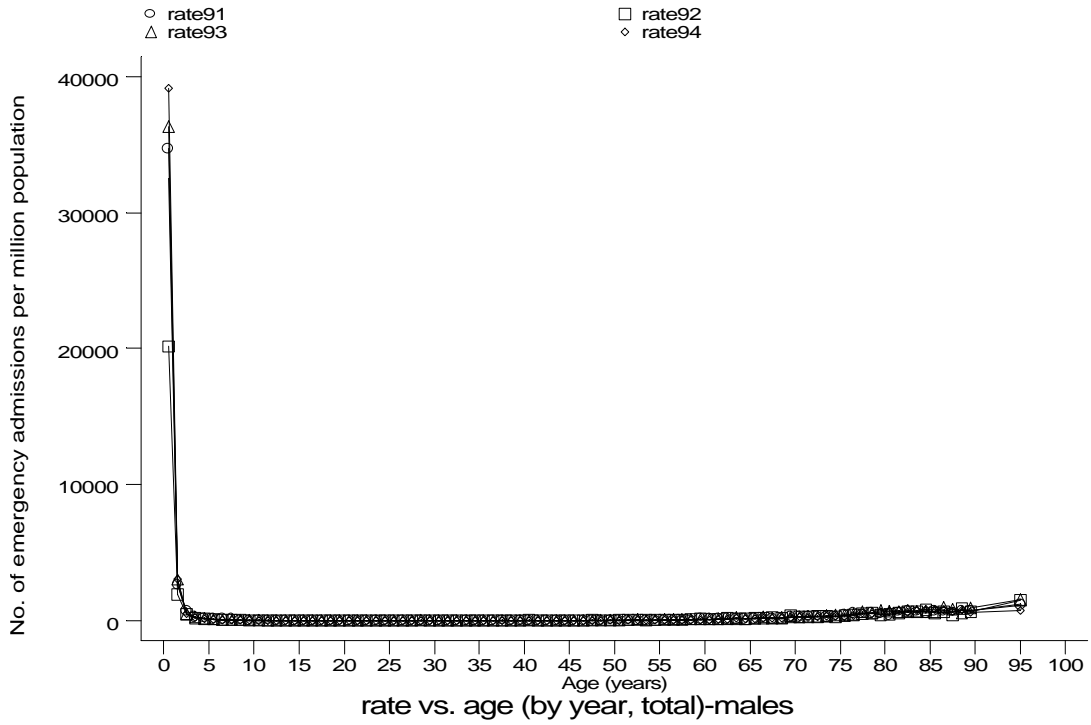
Age-sex distributions, yearly trends and cohort analysis (crude rates)

- HES Emergency admissions, England 1991-94

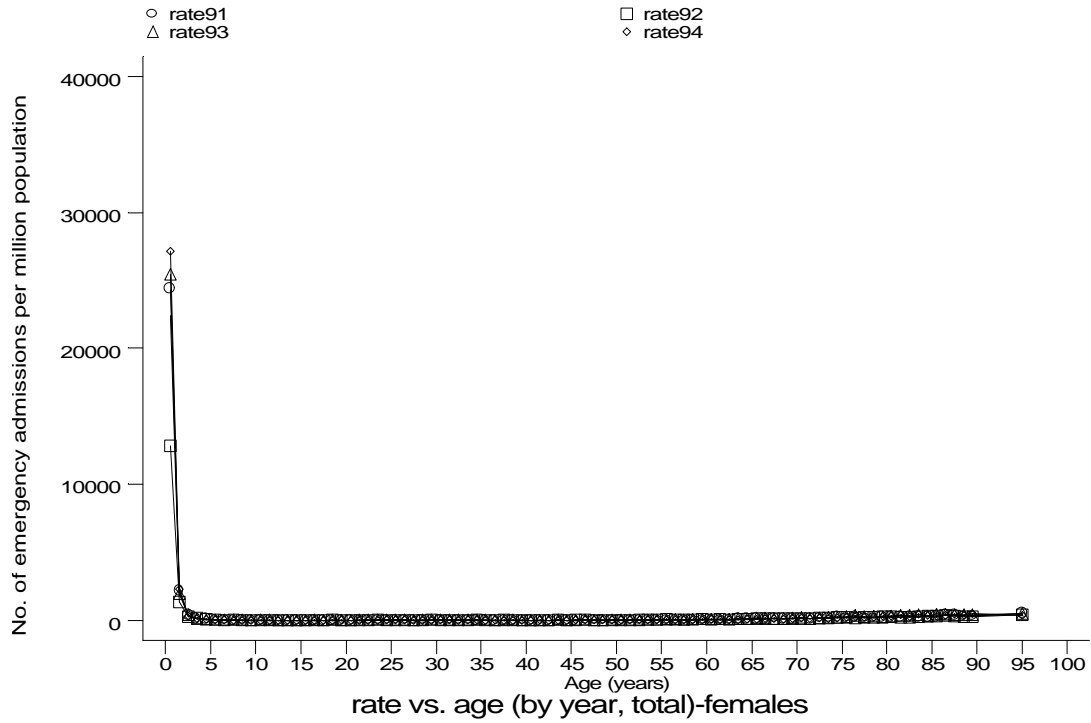


Age-sex distributions, yearly trends and cohort analysis (crude rates)

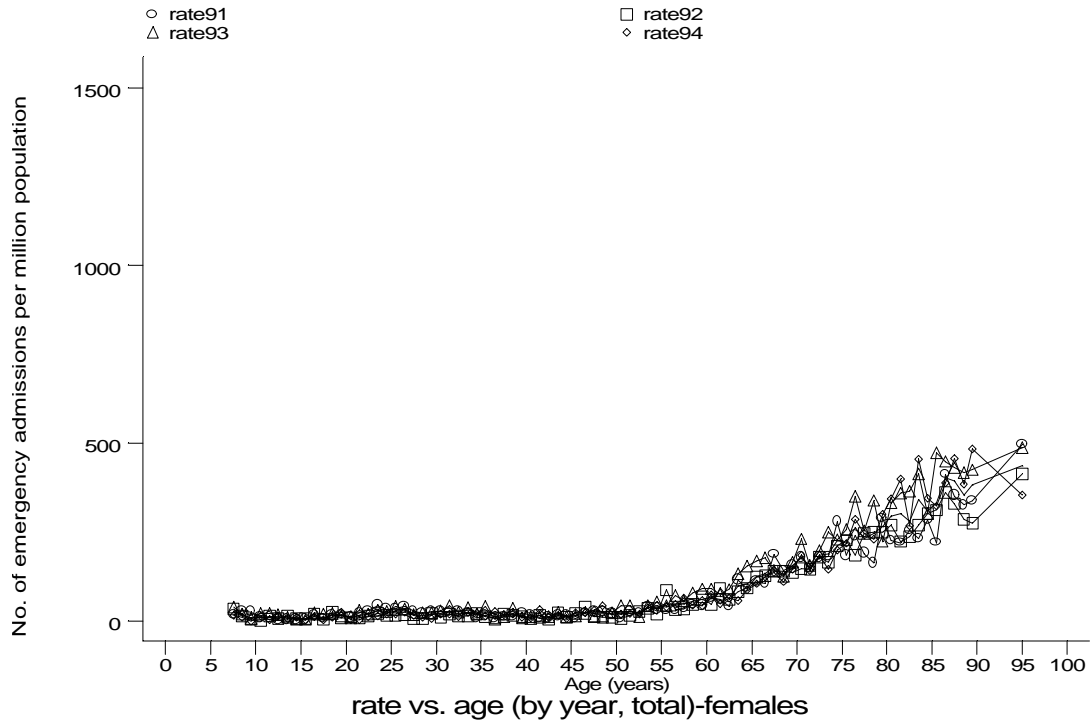
- HES Emergency admissions, England 1991-94



- HES Emergency admissions, England 1991-94



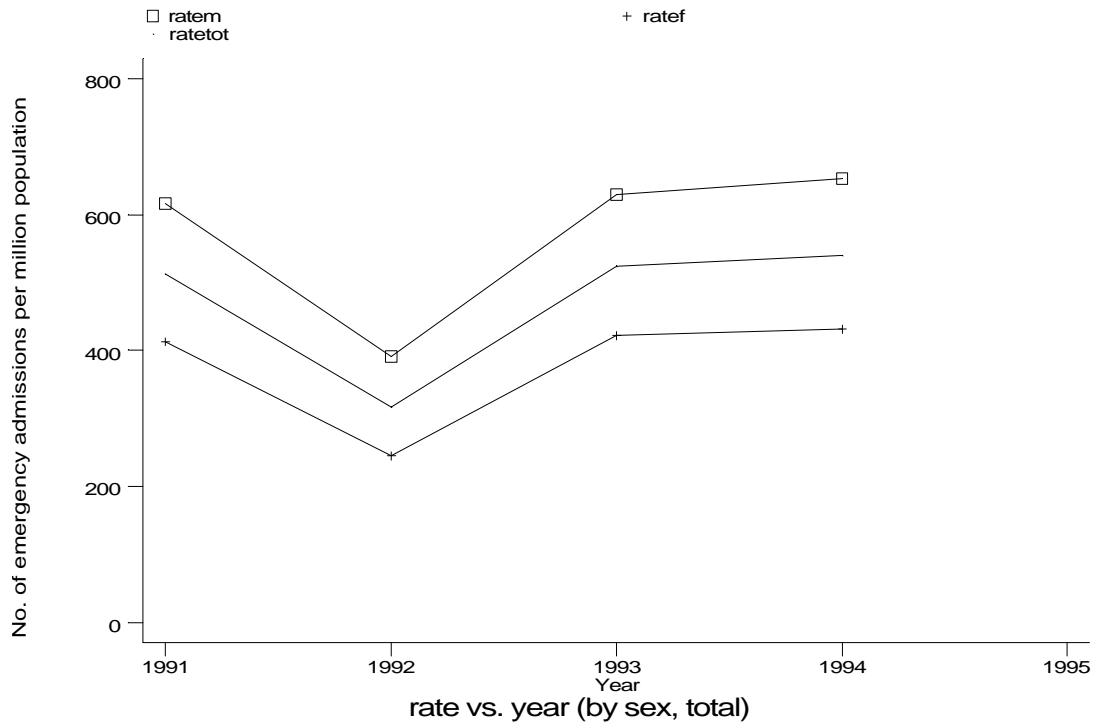
h1e4d1f.gph: FEMALES
 4. Ac bronchitis or bronchiolitis



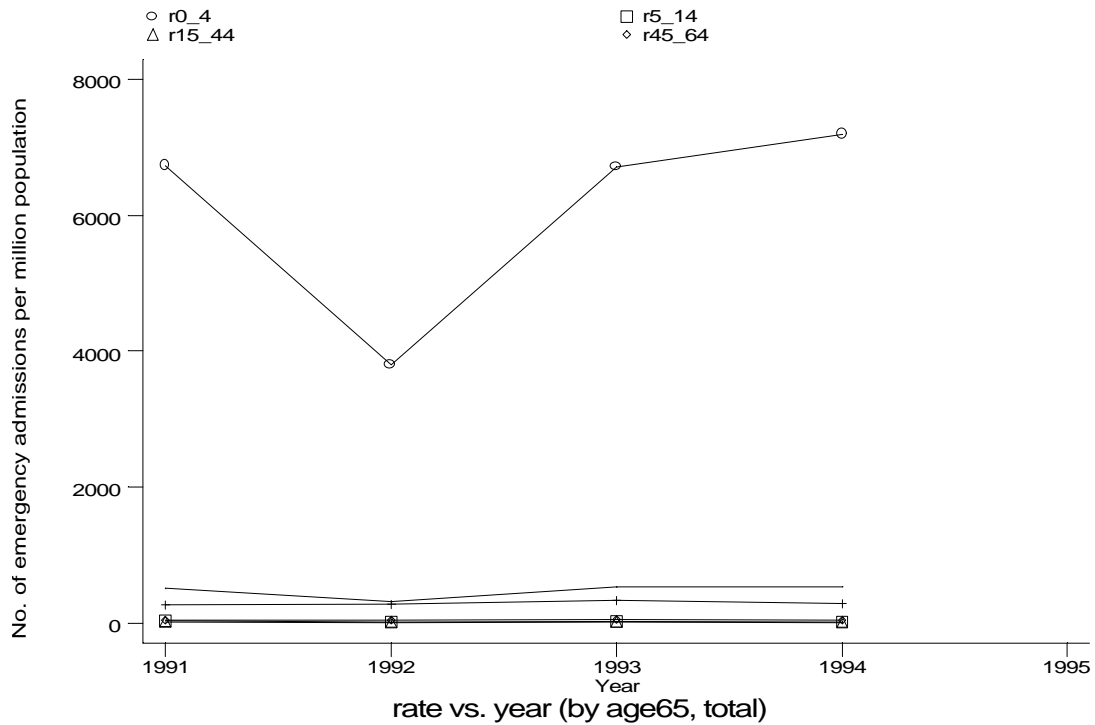
h1e4d2f.gph: FEMALES
 4. Ac bronchitis or bronchiolitis

Age-sex distributions, yearly trends and cohort analysis (crude rates)

- HES Emergency admissions, England 1991-94



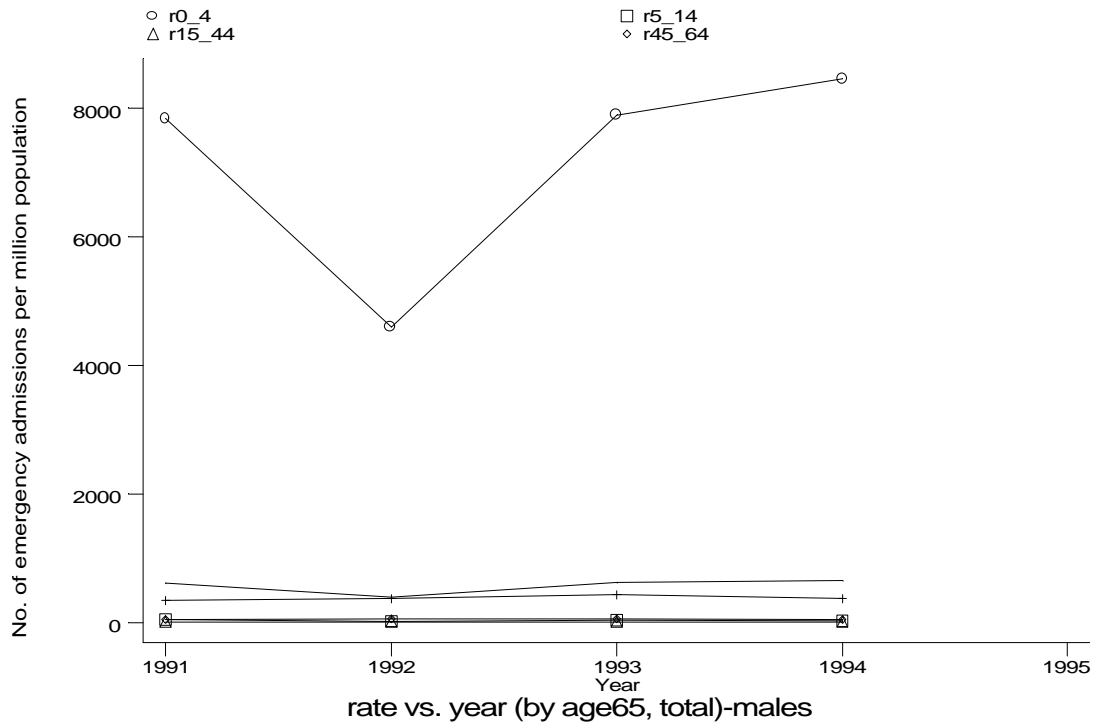
h1e4e.gph
4. Ac bronchitis or bronchiolitis



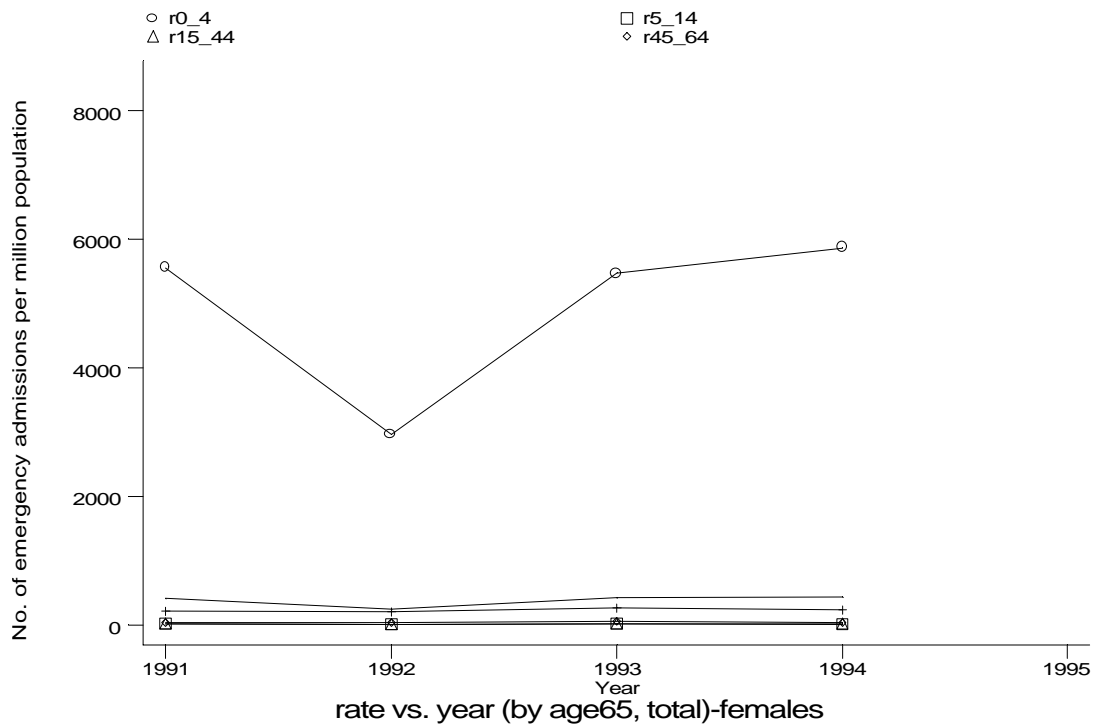
h1e4f.gph
4. Ac bronchitis or bronchiolitis

Age-sex distributions, yearly trends and cohort analysis (crude rates)

- HES Emergency admissions, England 1991-94

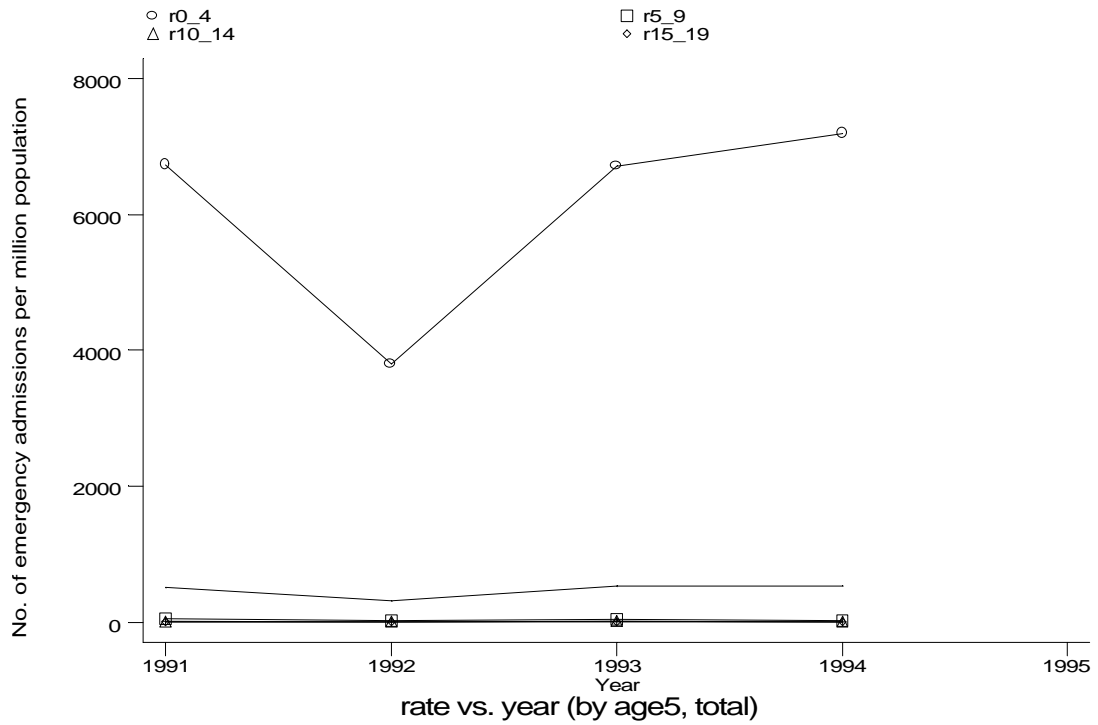


h1e4fm.gph: MALES
4. Ac bronchitis or bronchiolitis

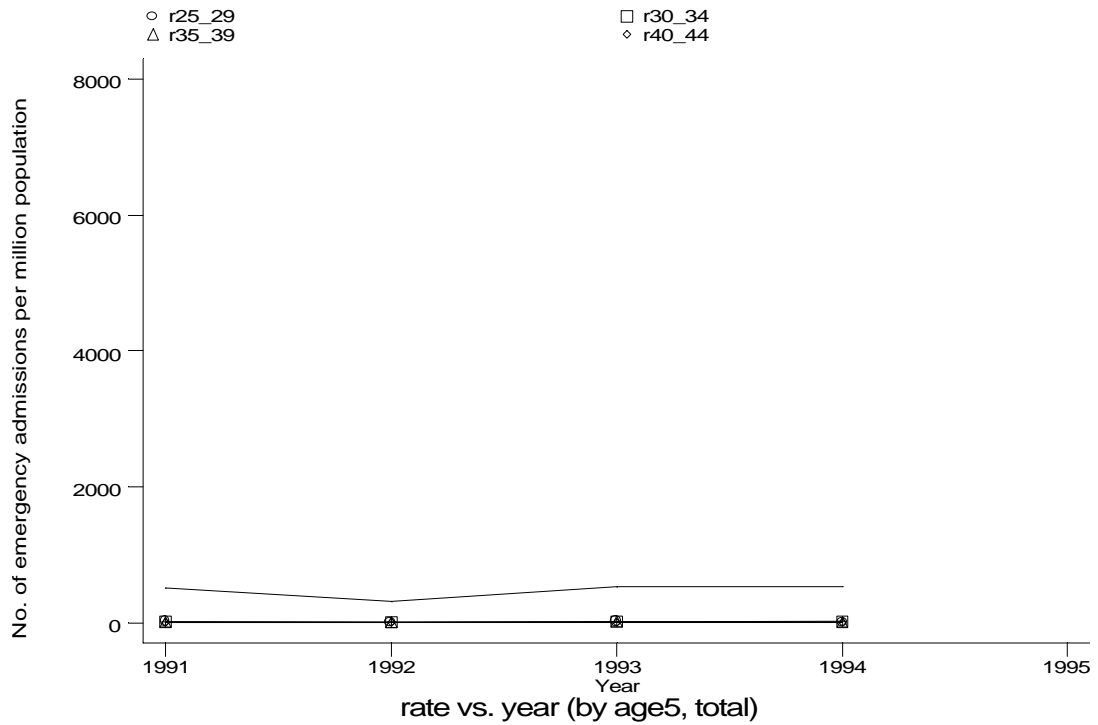


h1e4ff.gph: FEMALES
4. Ac bronchitis or bronchiolitis

• HES Emergency admissions, England 1991-94

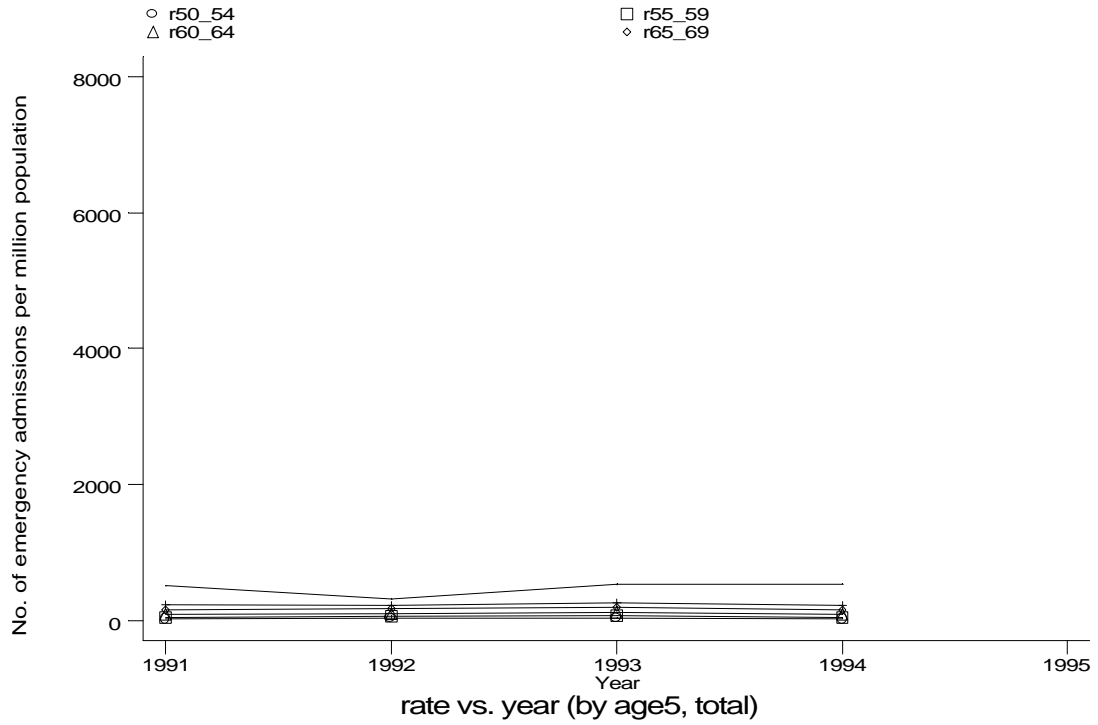


h1e4g1.gph
4. Ac bronchitis or bronchiolitis

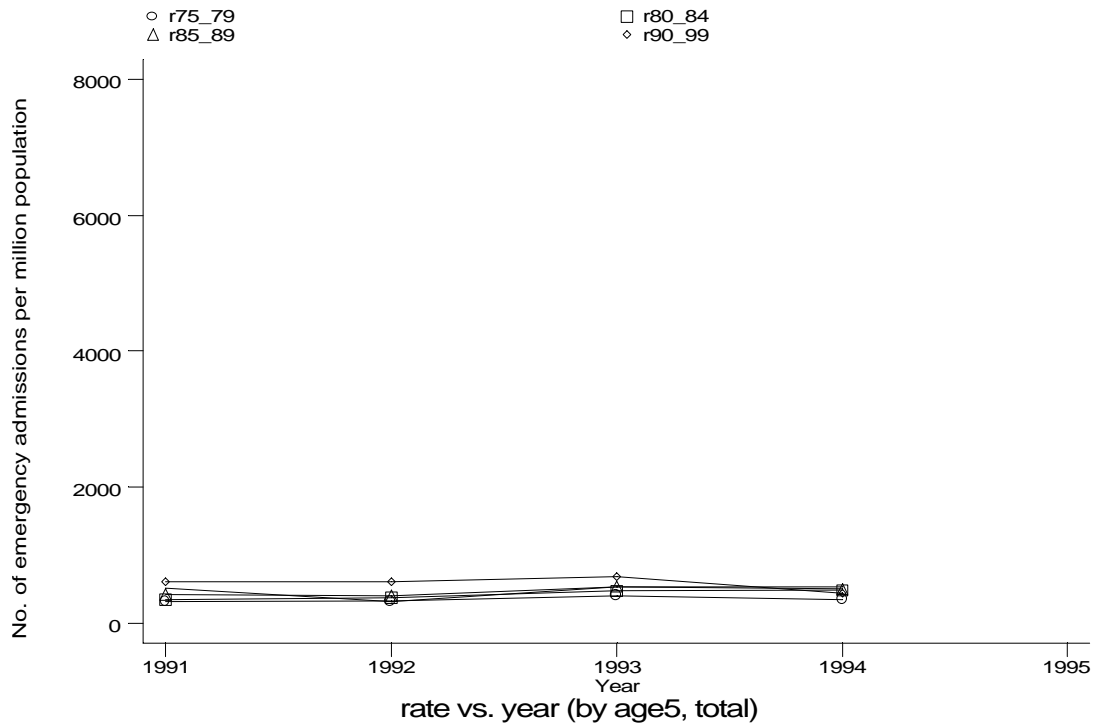


h1e4g2.gph
4. Ac bronchitis or bronchiolitis

• HES Emergency admissions, England 1991-94

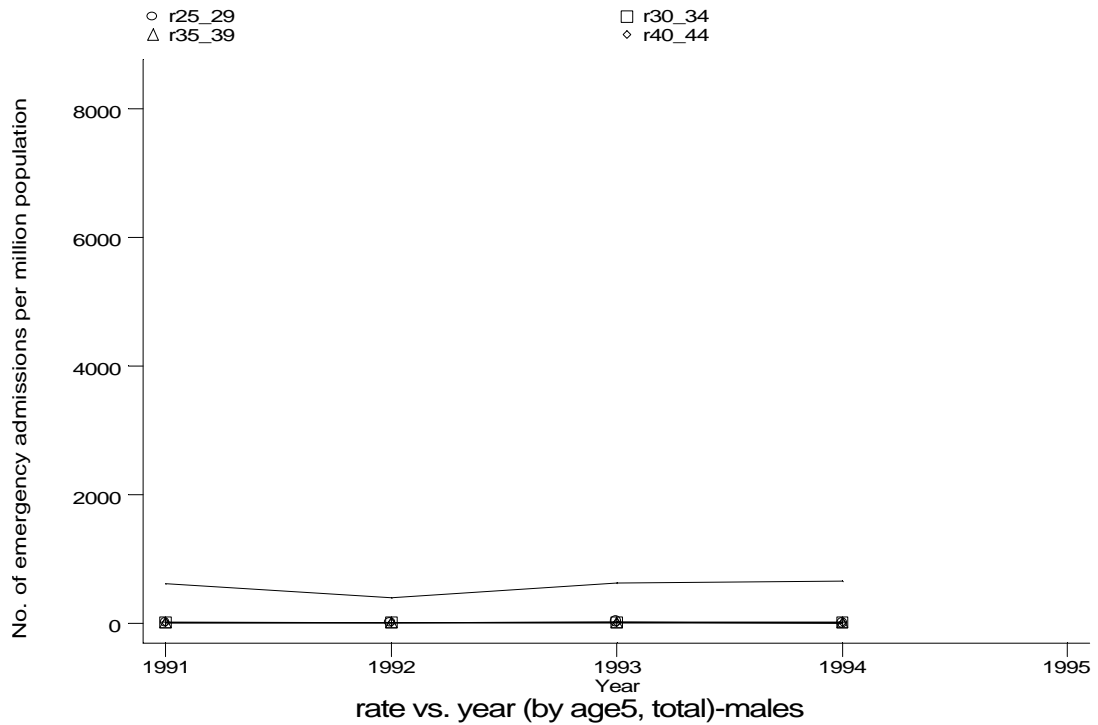
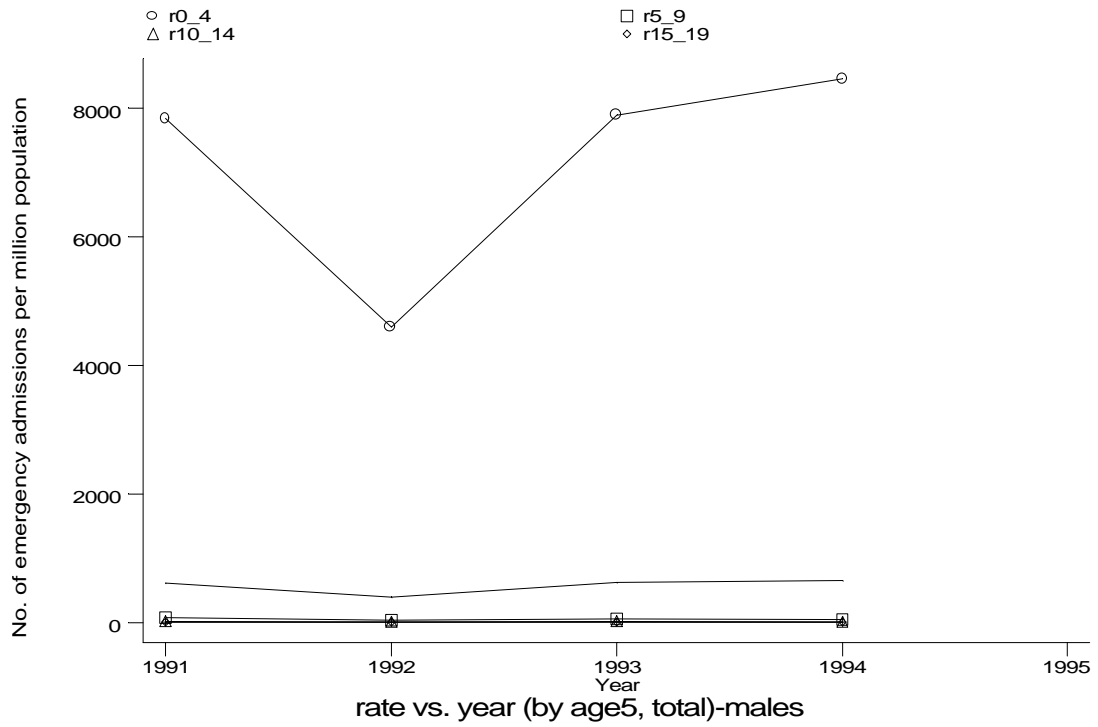


h1e4g3.gph
4. Ac bronchitis or bronchiolitis



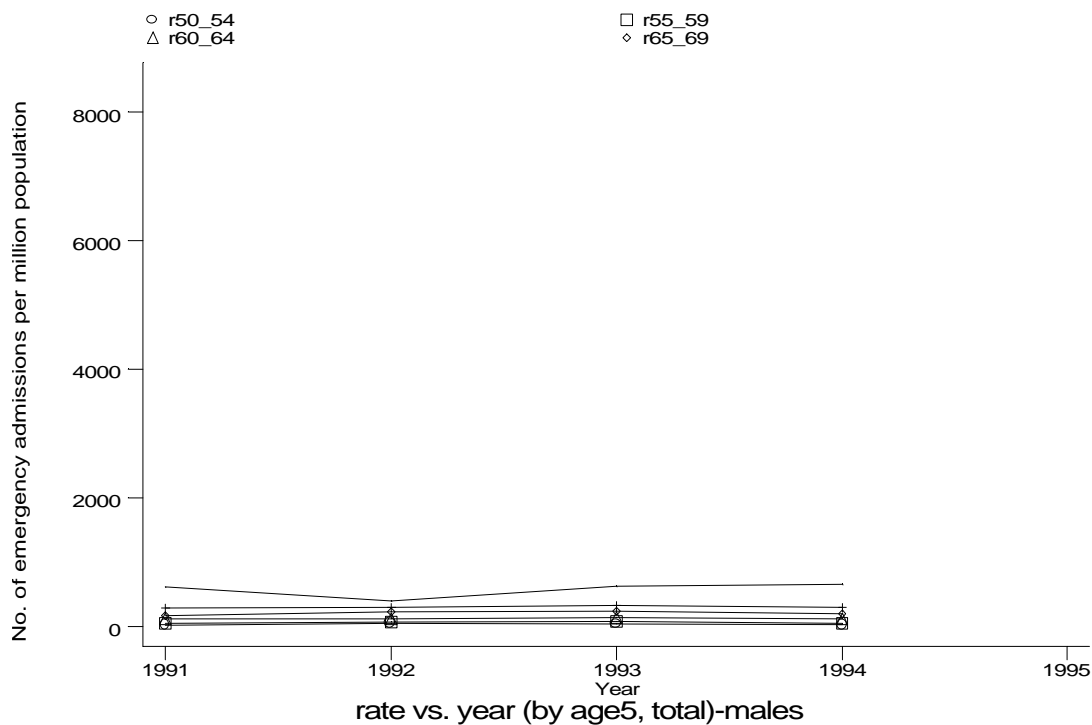
h1e4g4.gph
4. Ac bronchitis or bronchiolitis

• HES Emergency admissions, England 1991-94

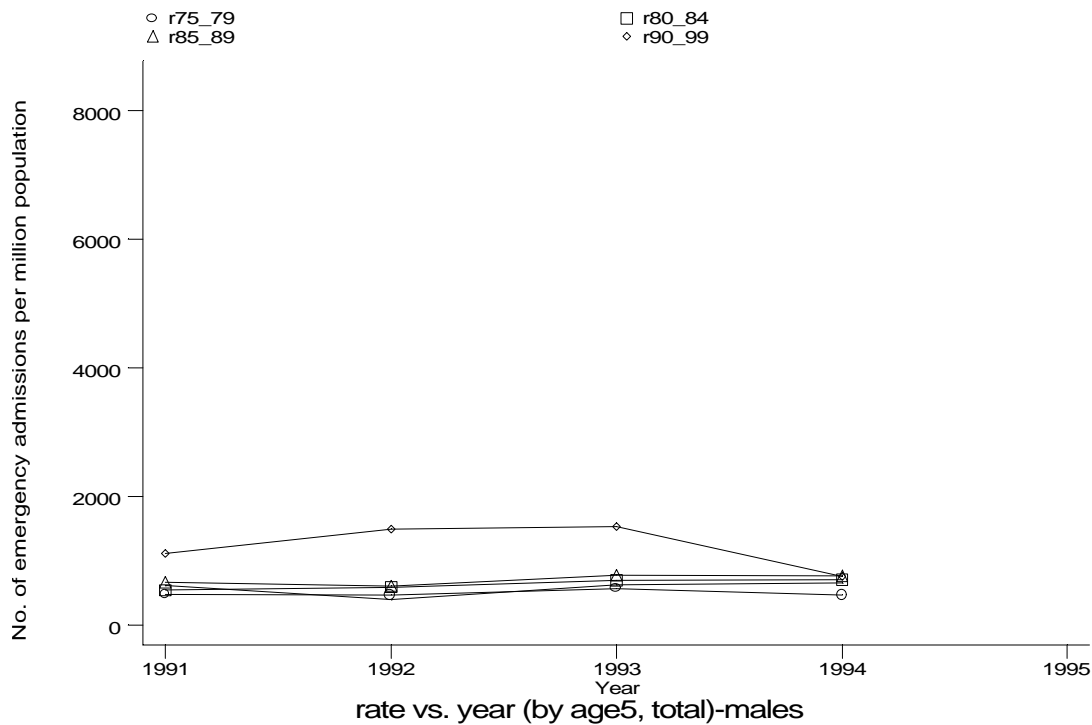


Age-sex distributions, yearly trends and cohort analysis (crude rates)

- HES Emergency admissions, England 1991-94

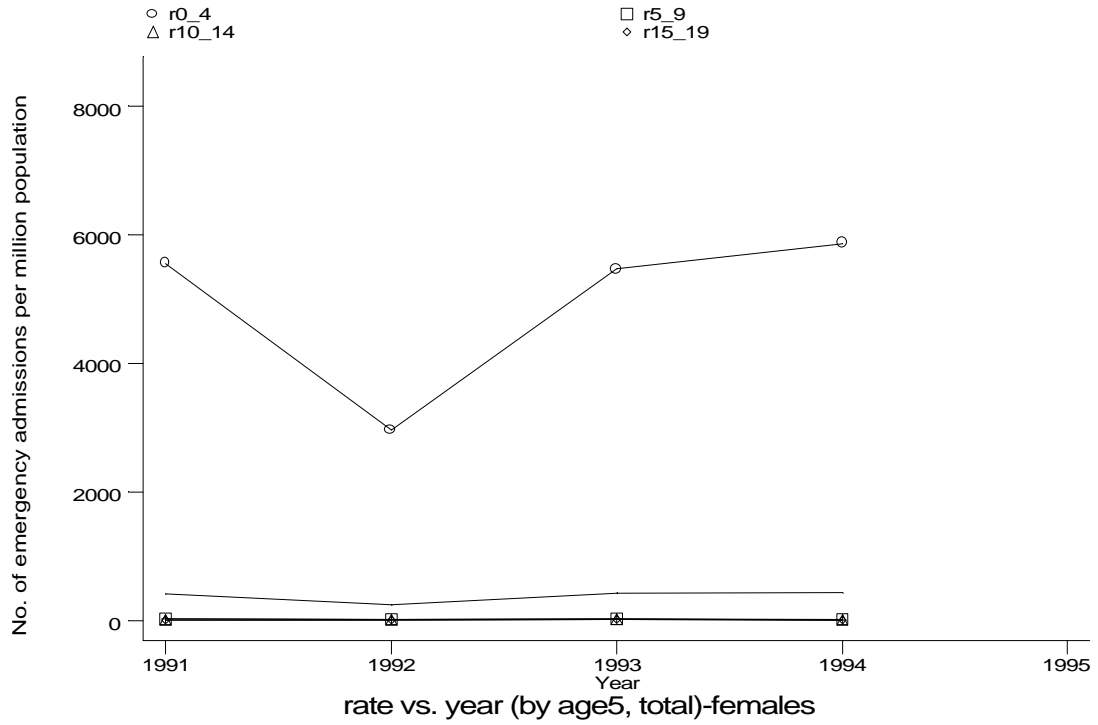


h1e4g3m.gph: MALES
4. Ac bronchitis or bronchiolitis

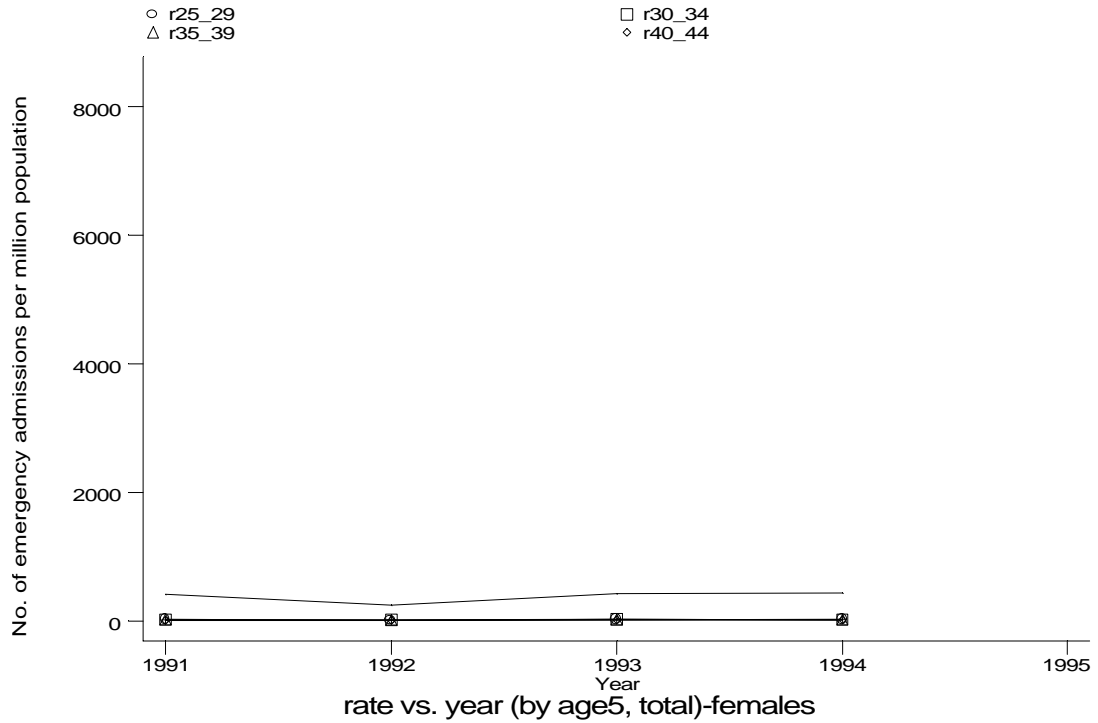


h1e4g4m.gph: MALES
4. Ac bronchitis or bronchiolitis

• HES Emergency admissions, England 1991-94

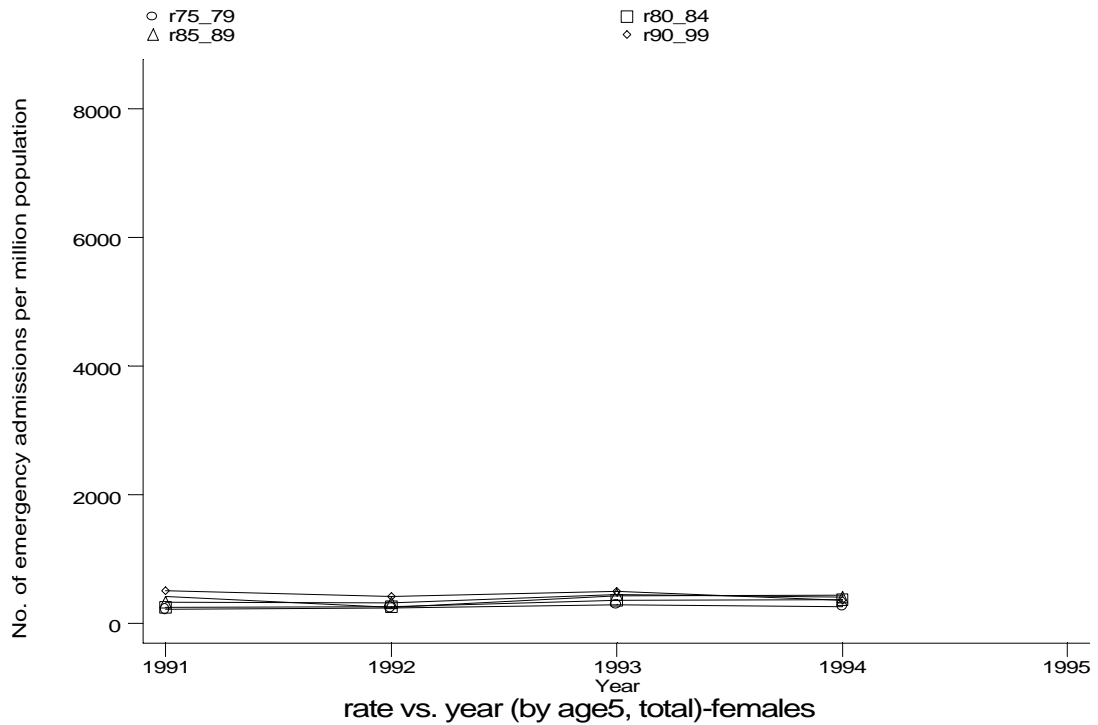
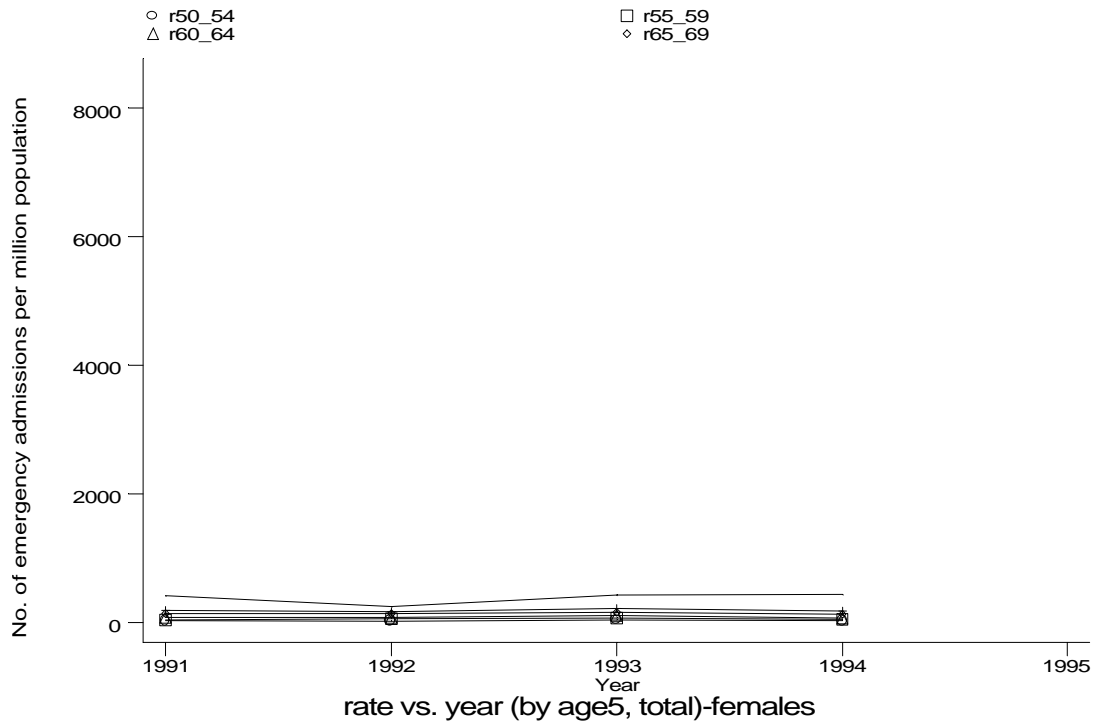


h1e4g1f.gph: FEMALES
 4. Ac bronchitis or bronchiolitis

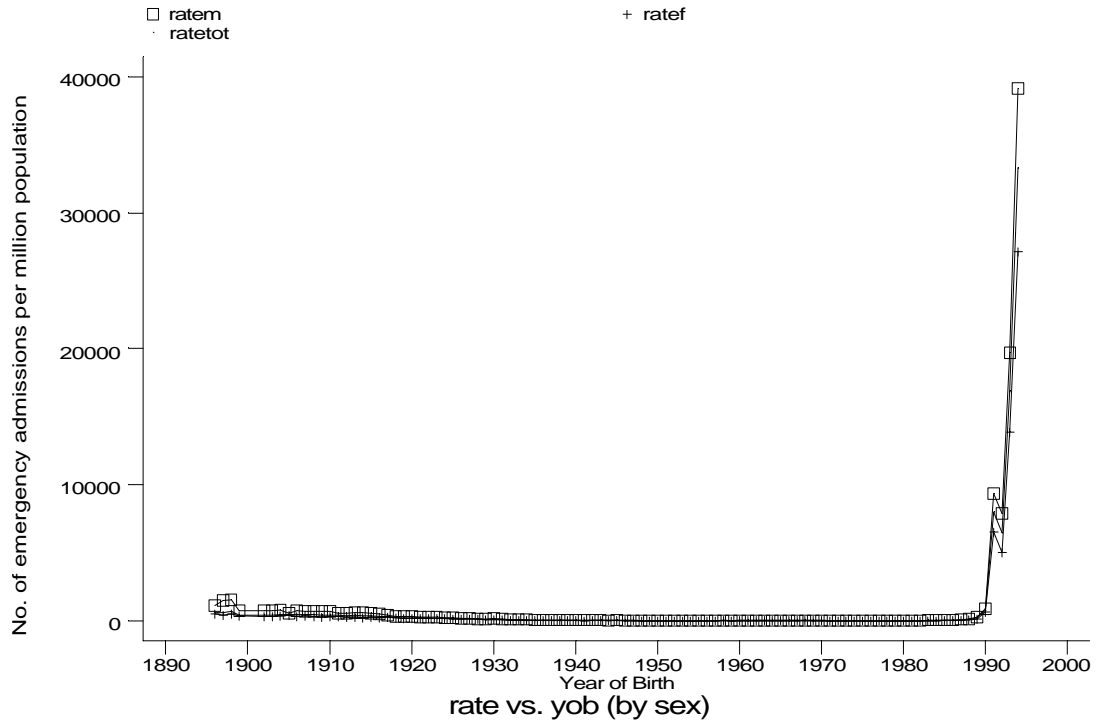


h1e4g2f.gph: FEMALES
 4. Ac bronchitis or bronchiolitis

• HES Emergency admissions, England 1991-94



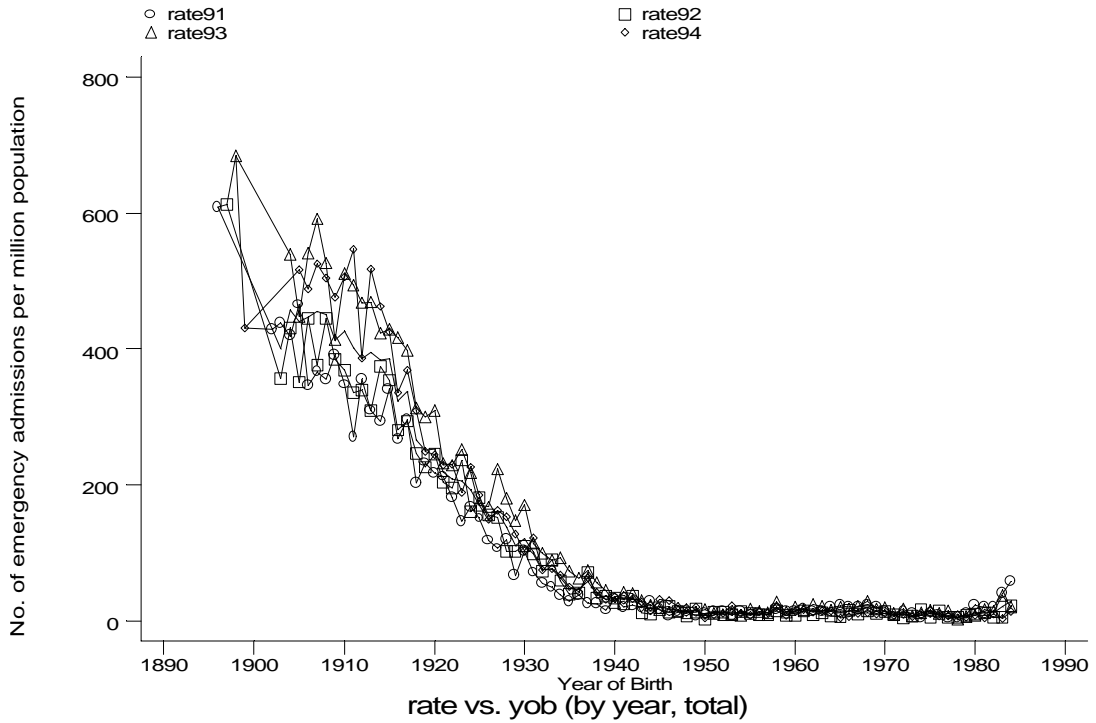
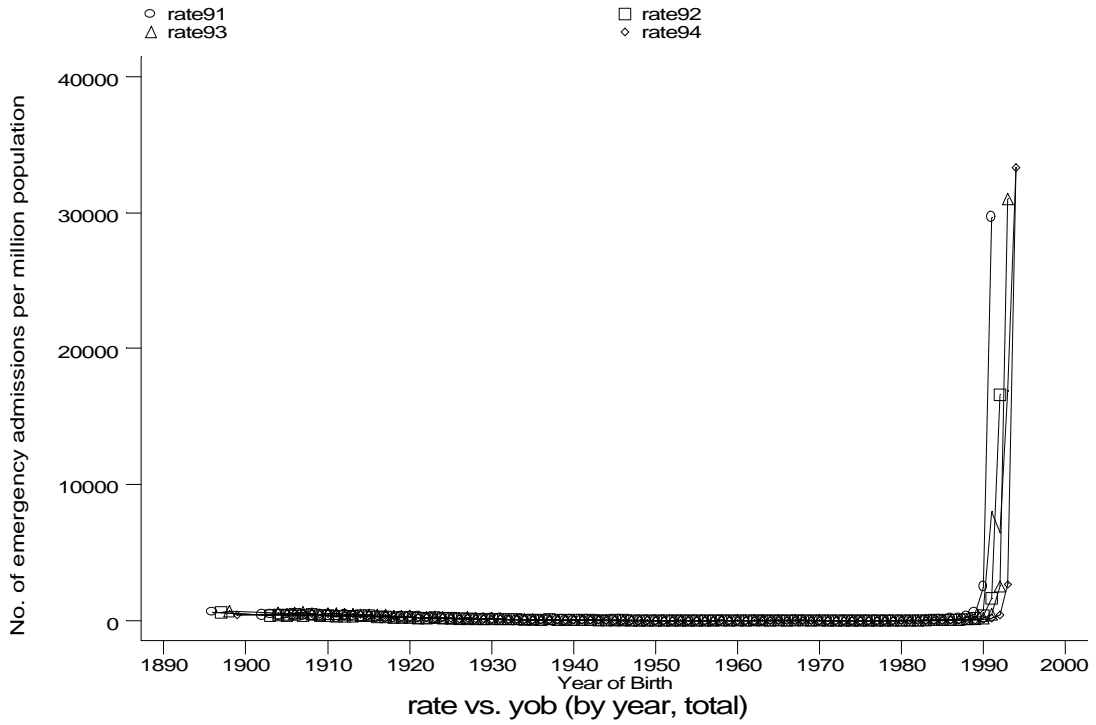
- HES Emergency admissions, England 1991-94



h1e4h.gph
4. Ac bronchitis or bronchiolitis

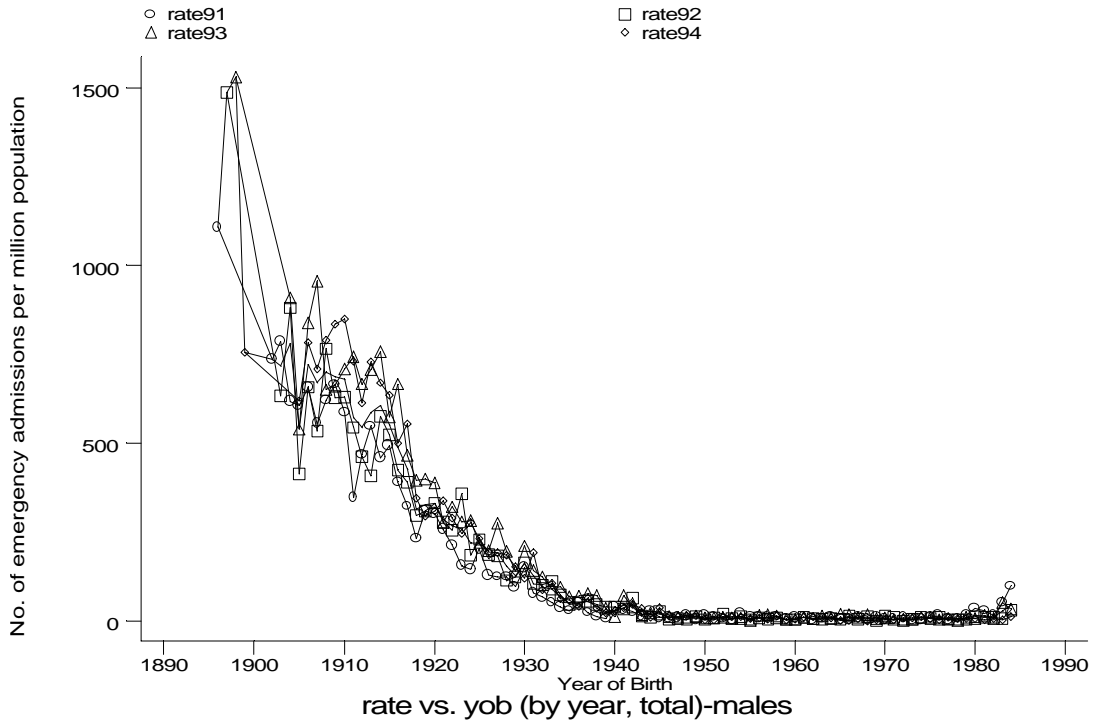
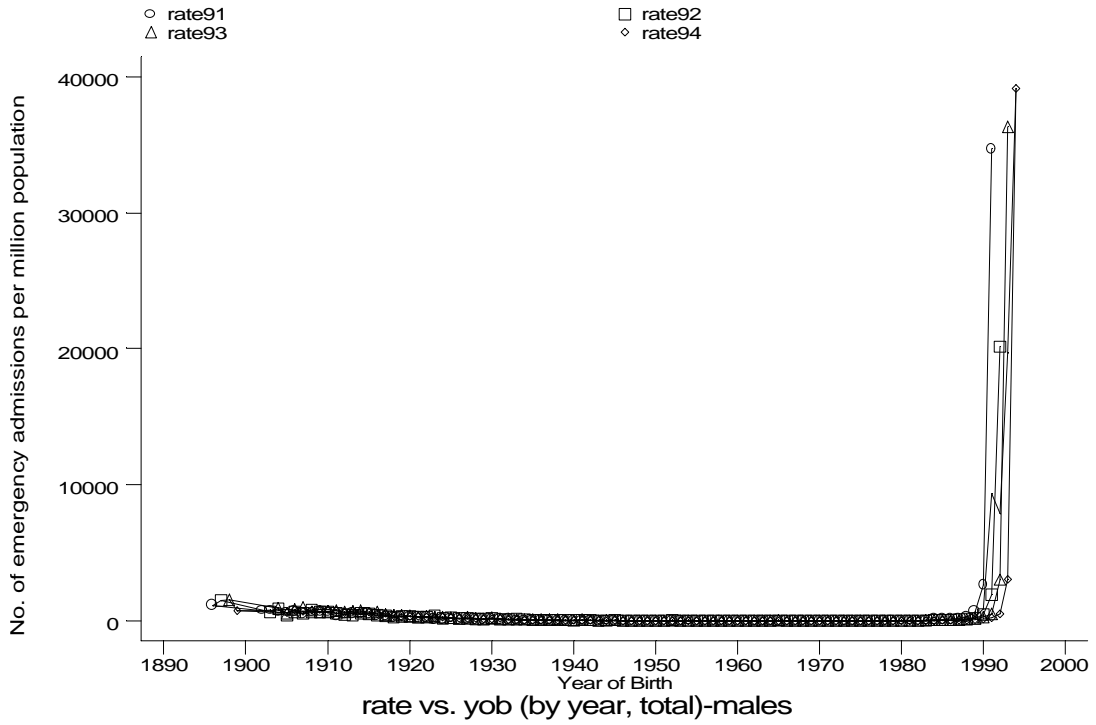
Age-sex distributions, yearly trends and cohort analysis (crude rates)

- HES Emergency admissions, England 1991-94



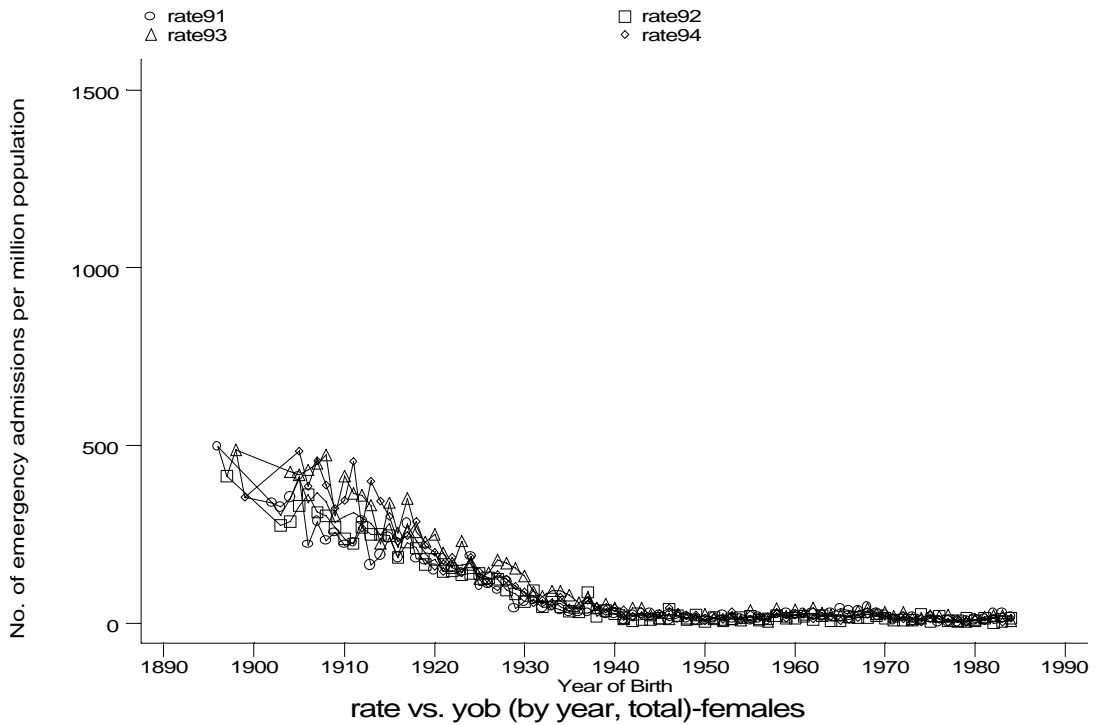
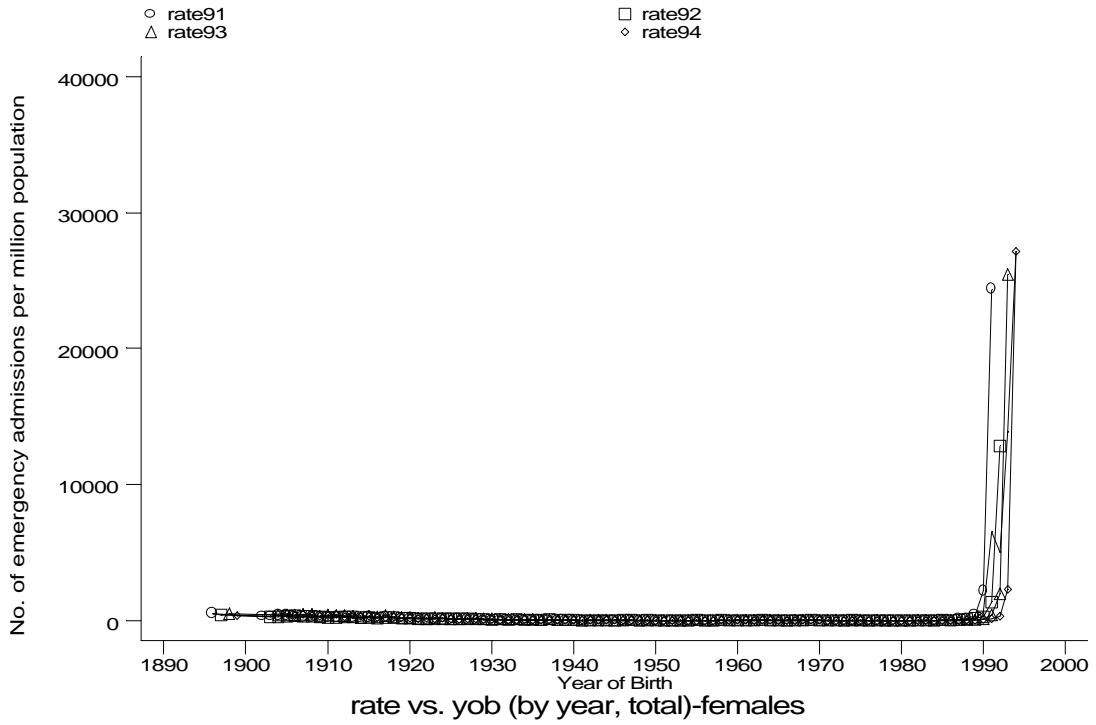
Age-sex distributions, yearly trends and cohort analysis (crude rates)

- HES Emergency admissions, England 1991-94



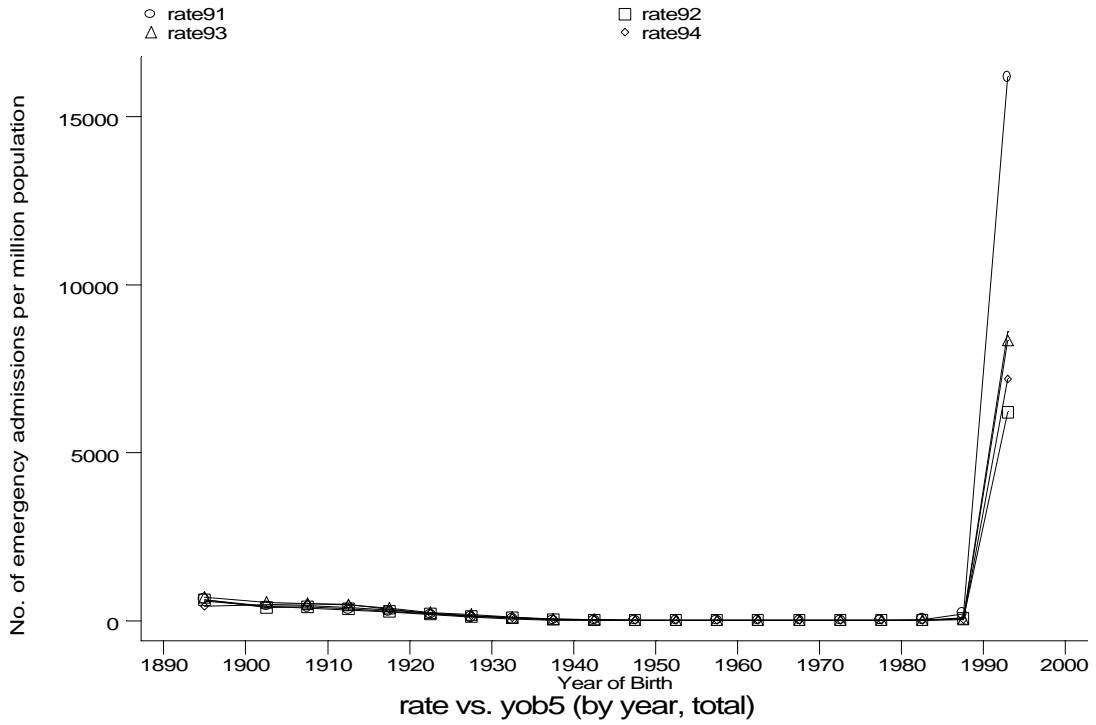
Age-sex distributions, yearly trends and cohort analysis (crude rates)

- HES Emergency admissions, England 1991-94

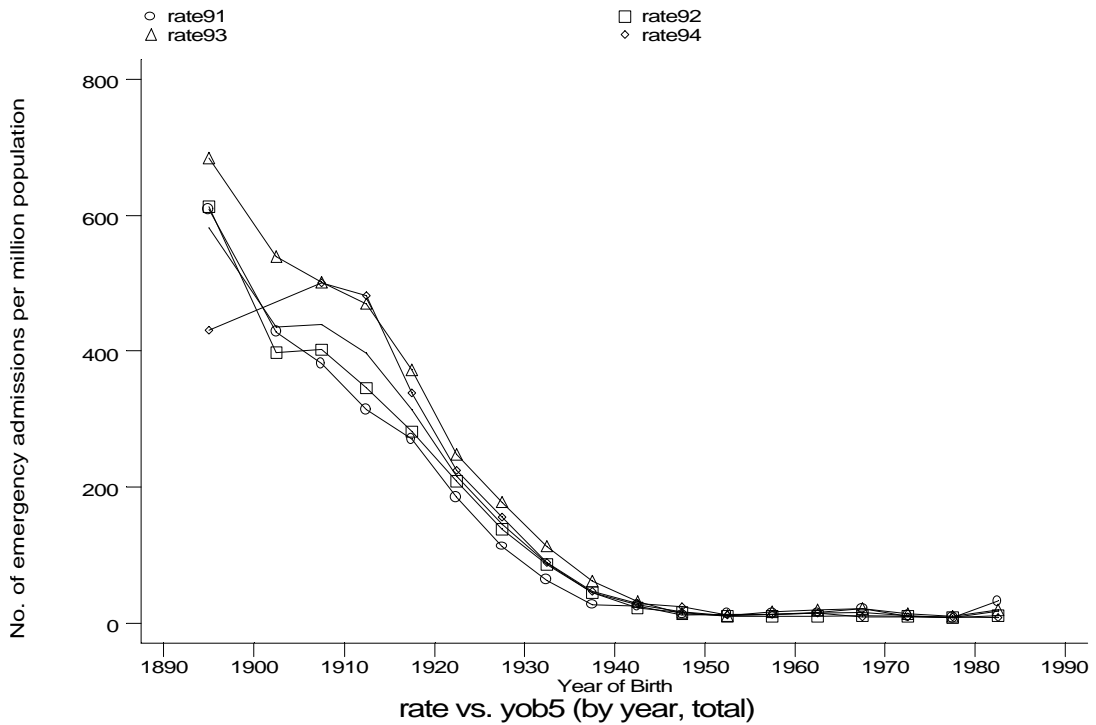


Age-sex distributions, yearly trends and cohort analysis (crude rates)

- HES Emergency admissions, England 1991-94



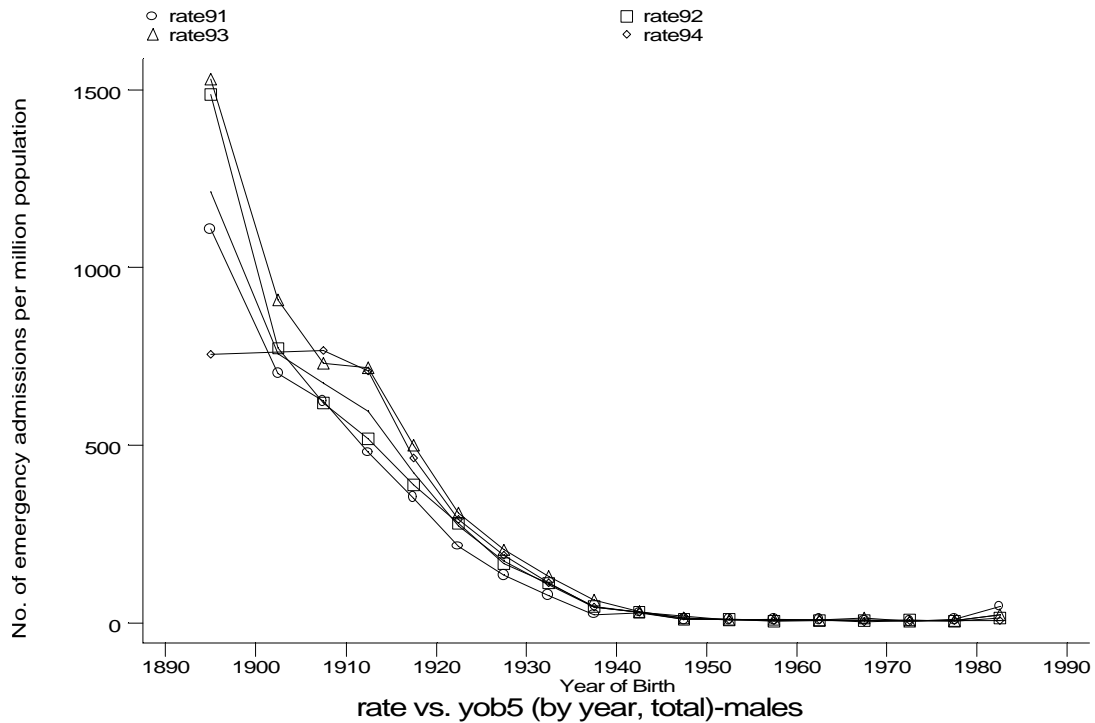
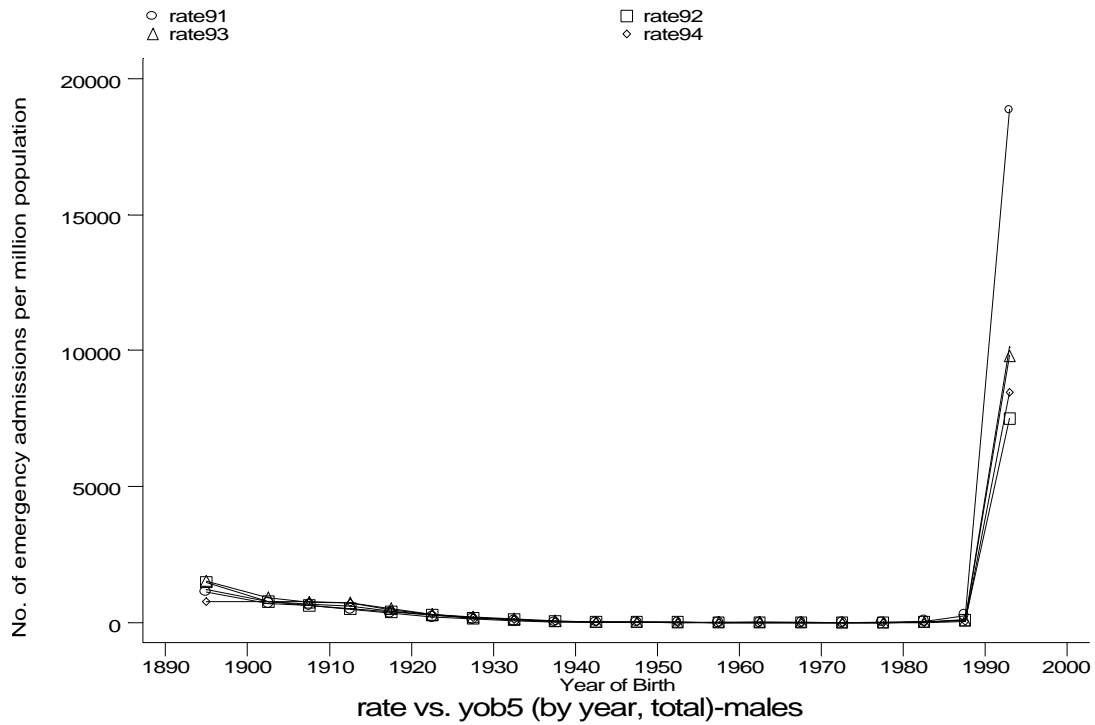
h1e4j1.gph
4. Ac bronchitis or bronchiolitis



h1e4j2.gph
4. Ac bronchitis or bronchiolitis

Age-sex distributions, yearly trends and cohort analysis (crude rates)

- HES Emergency admissions, England 1991-94



Age-sex distributions, yearly trends and cohort analysis (crude rates)

- HES Emergency admissions, England 1991-94

