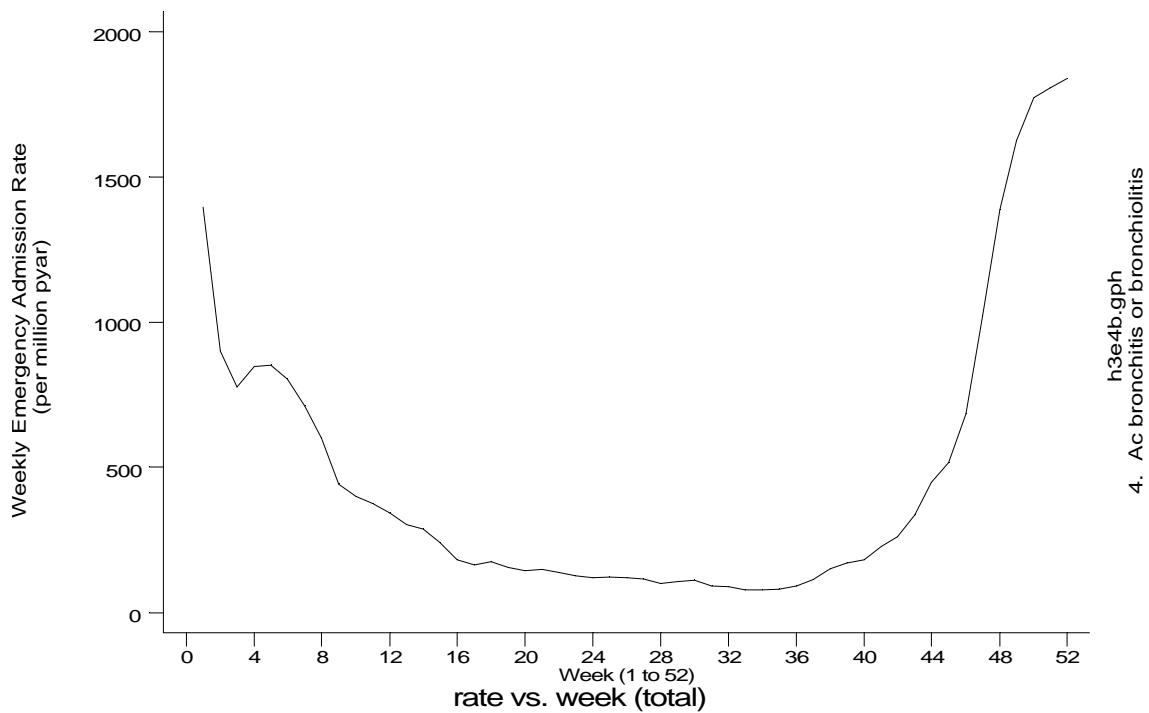
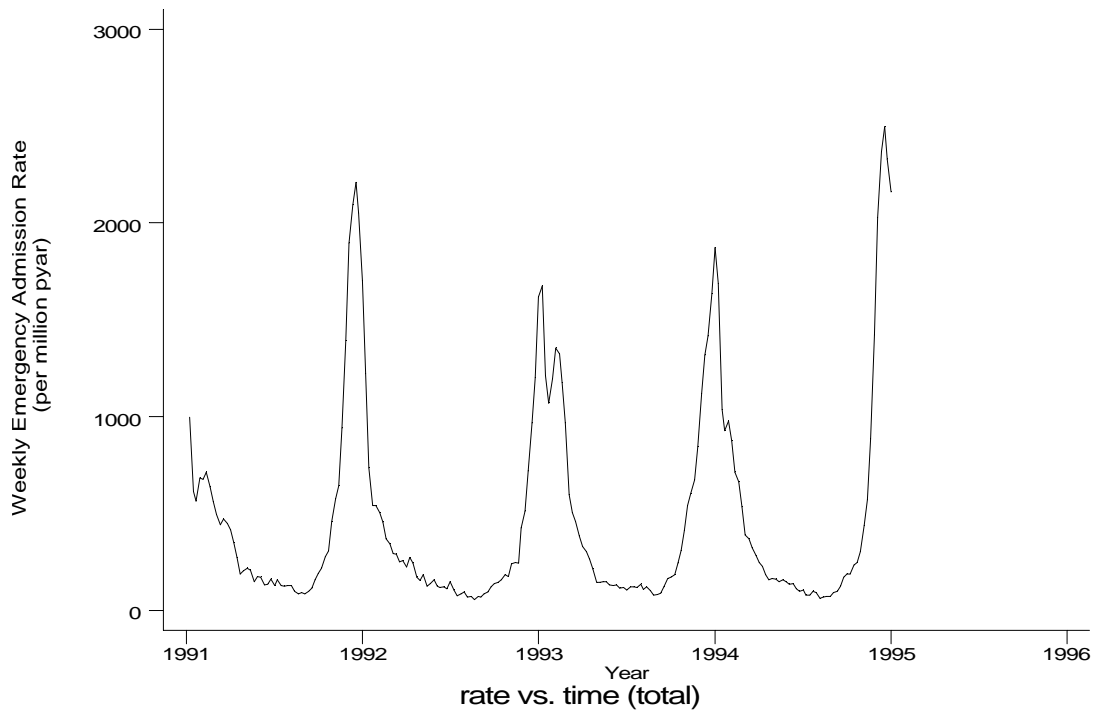


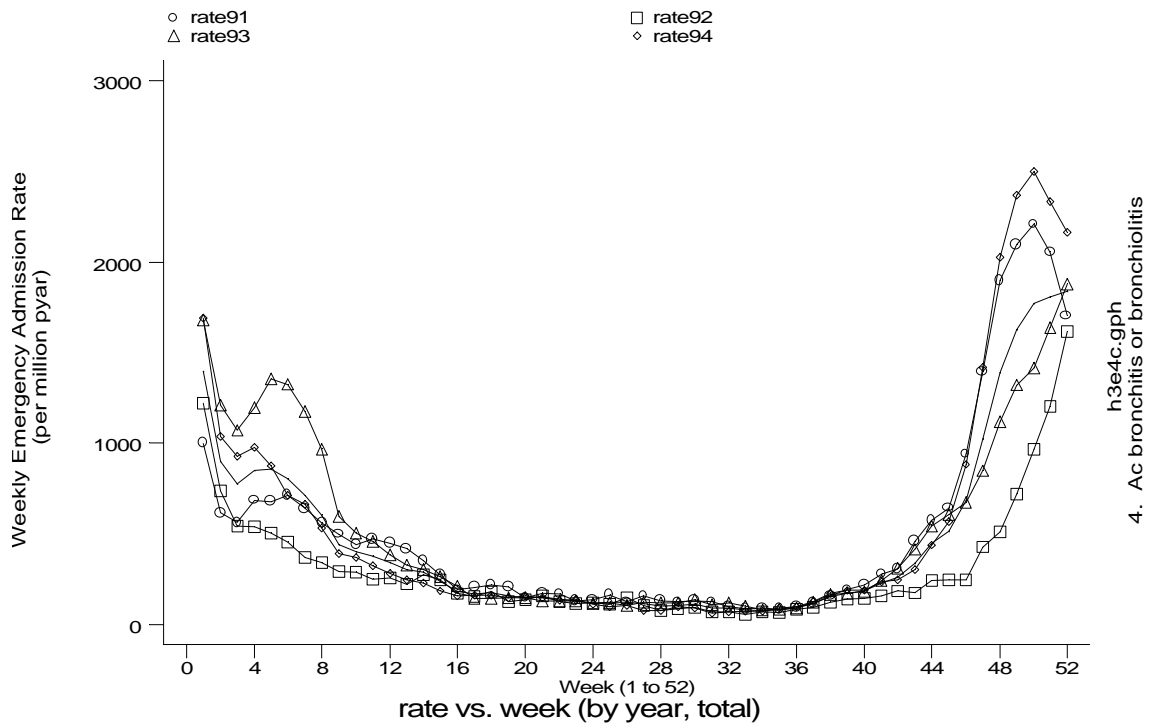
**A10 Acute bronchitis or bronchiolitis standard output graphs**  
**Seasonality (crude rates by week of year)**

- **HES Emergency admissions, England 1991-94**



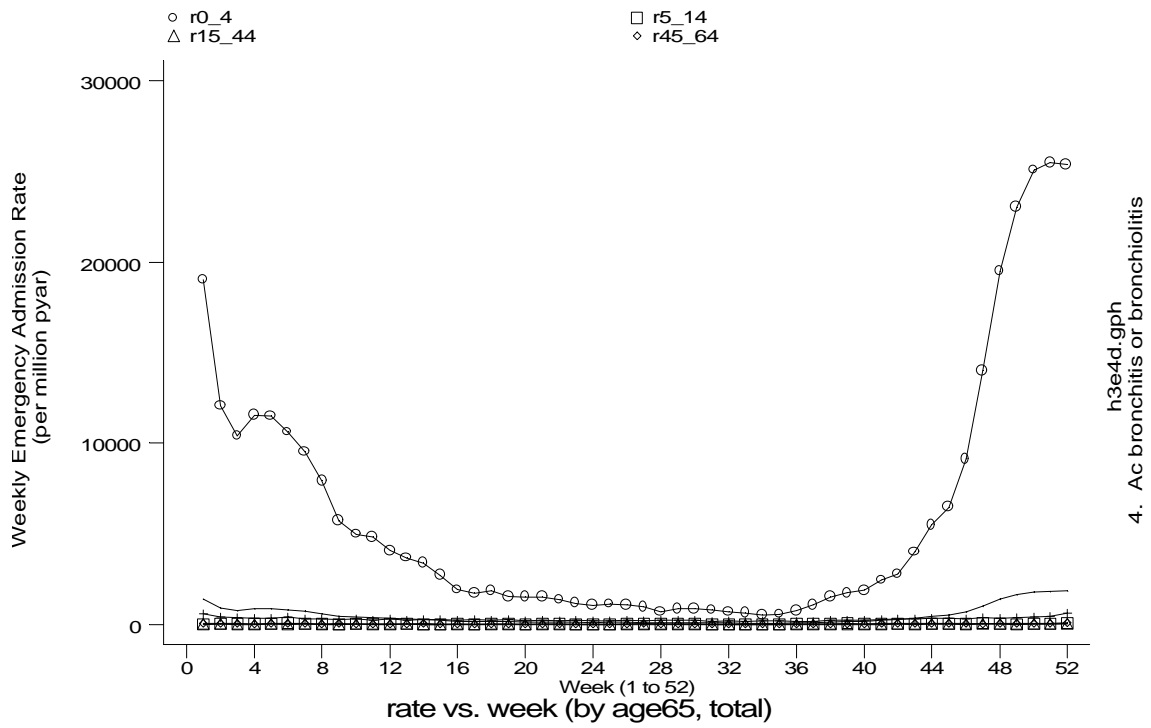
**A10 Acute bronchitis or bronchiolitis standard output graphs**  
**Seasonality (crude rates by week of year)**

- **HES Emergency admissions, England 1991-94**

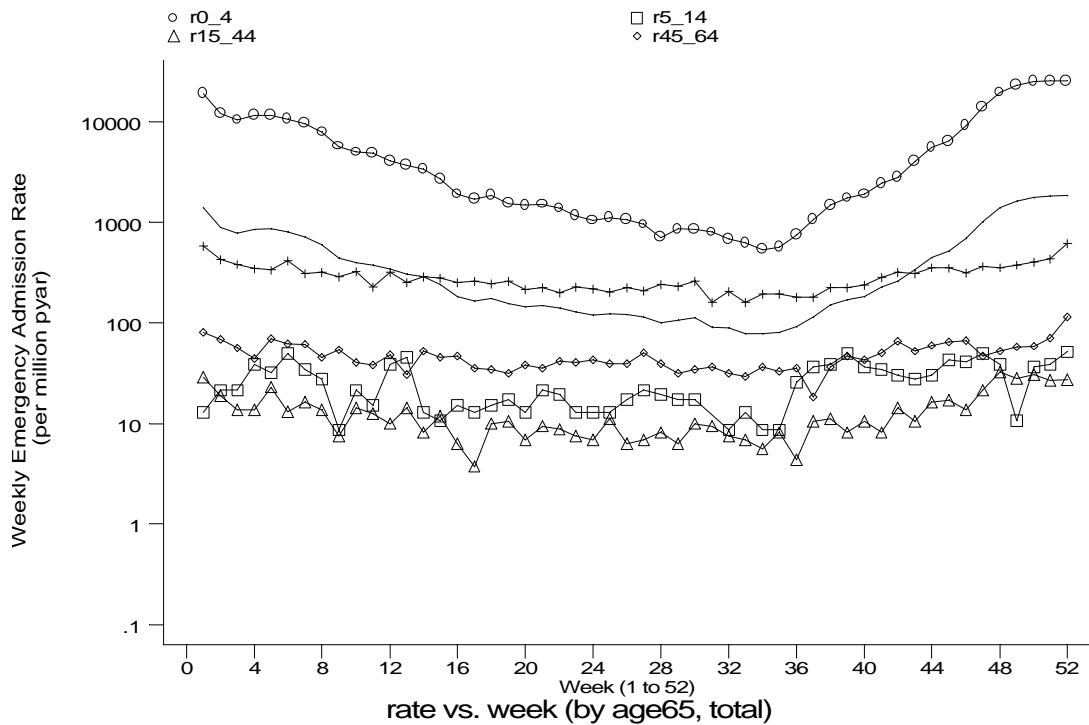


h3e4c.gph  
4. Ac bronchitis or bronchiolitis

- HES Emergency admissions, England 1991-94



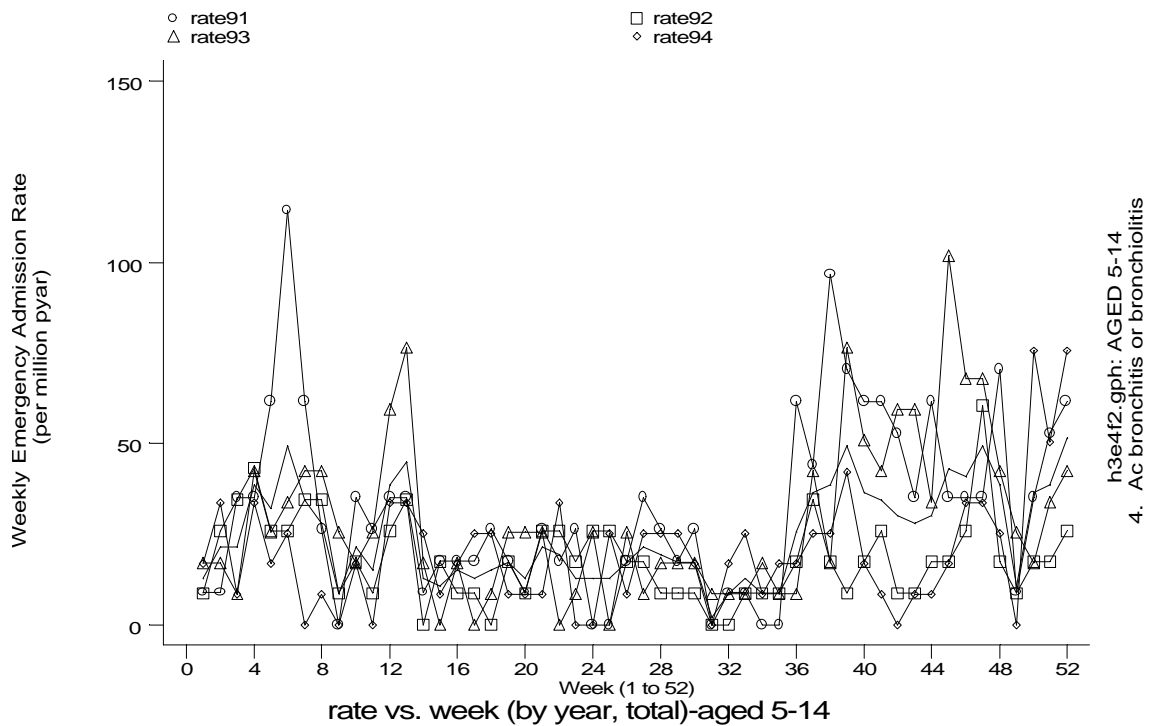
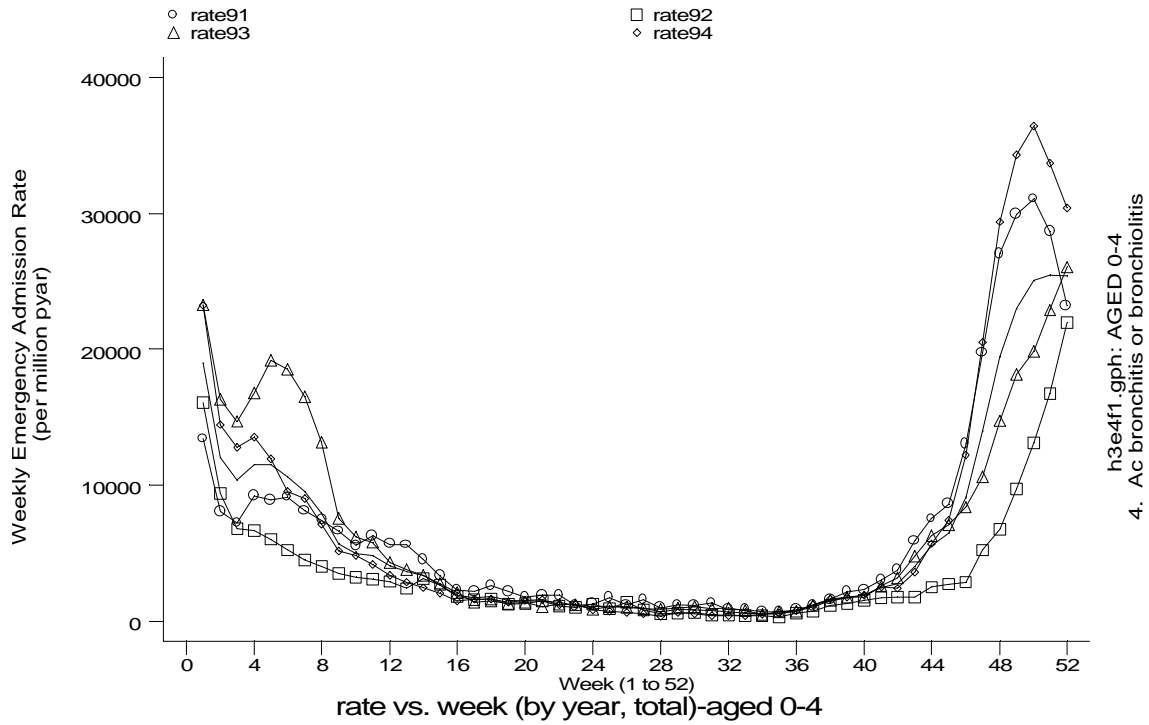
h3e4d.gph  
 4. Ac bronchitis or bronchiolitis



h3e4e.gph  
 4. Ac bronchitis or bronchiolitis

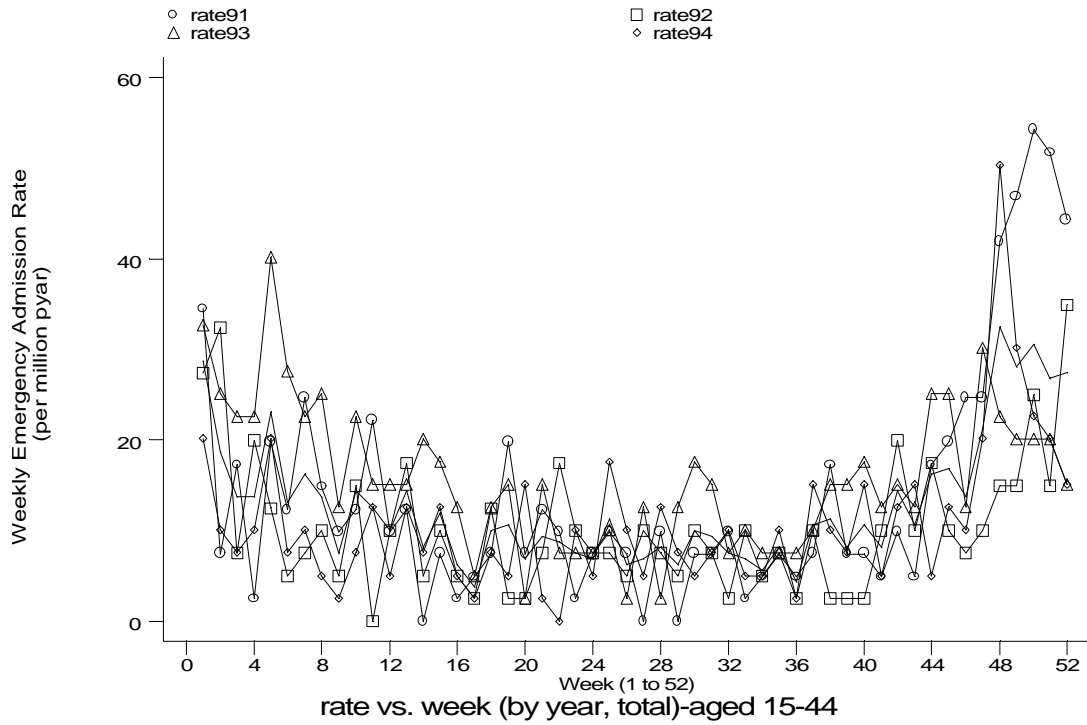
**A10 Acute bronchitis or bronchiolitis standard output graphs**  
**Seasonality (crude rates by week of year)**

- **HES Emergency admissions, England 1991-94**

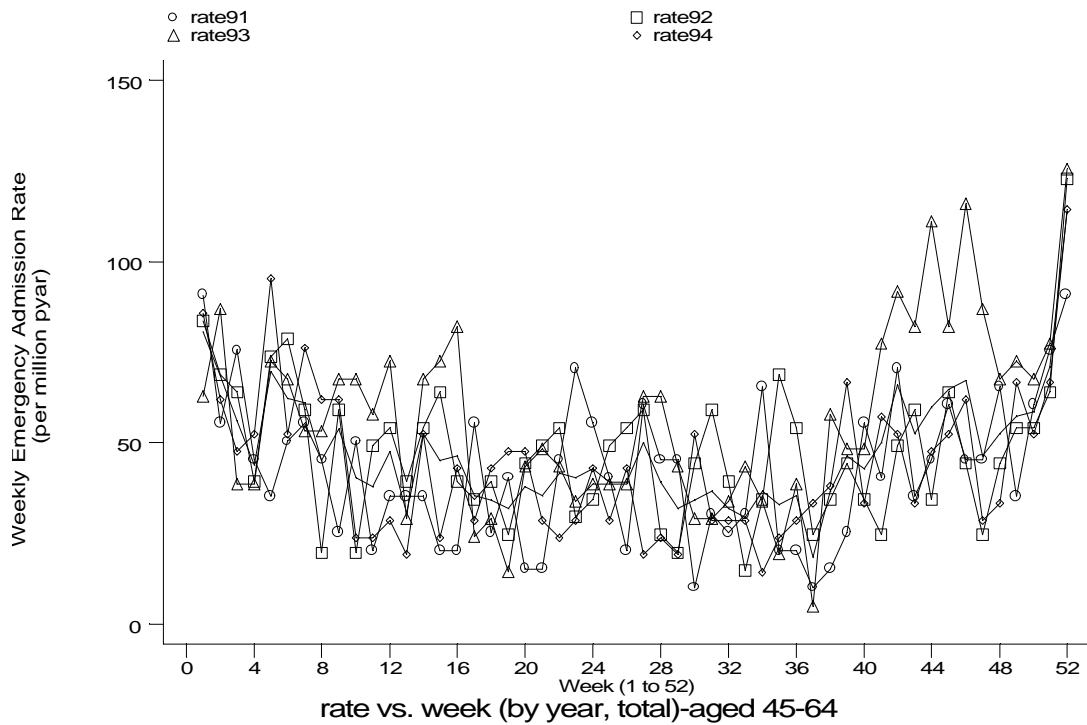


**A10 Acute bronchitis or bronchiolitis standard output graphs**  
**Seasonality (crude rates by week of year)**

- **HES Emergency admissions, England 1991-94**



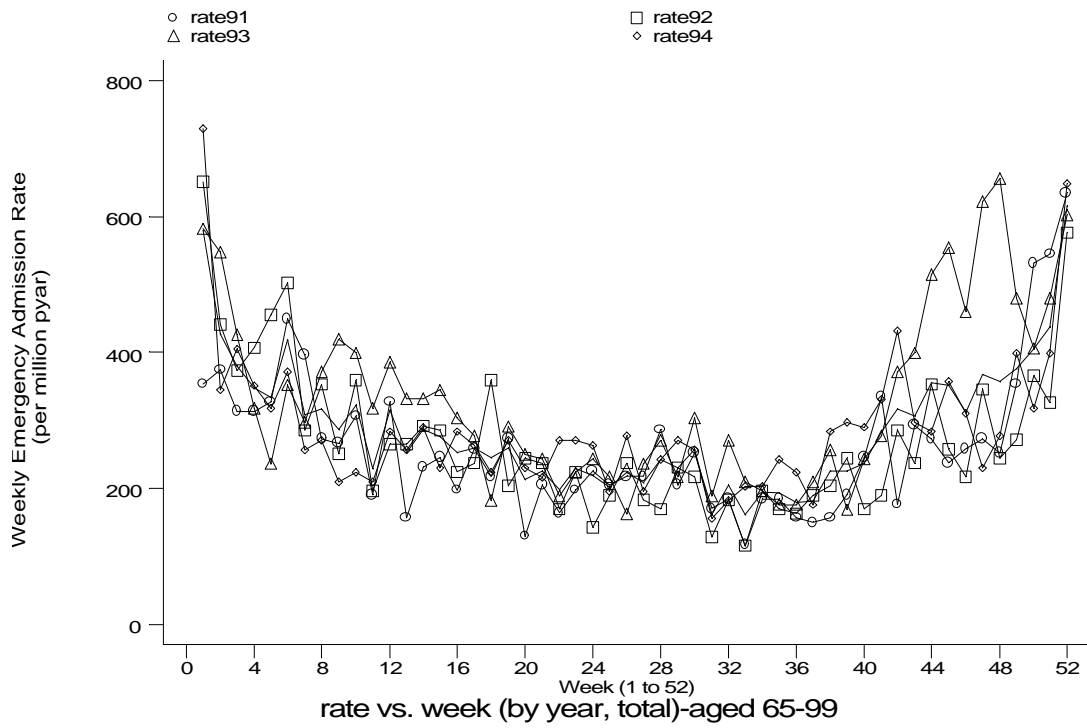
h3e4f3.gph: AGED 15-44  
4. Ac bronchitis or bronchiolitis



h3e4f4.gph: AGED 45-64  
4. Ac bronchitis or bronchiolitis

**A10 Acute bronchitis or bronchiolitis standard output graphs**  
**Seasonality (crude rates by week of year)**

- **HES Emergency admissions, England 1991-94**



h3e4f5.gph: AGED 65-99  
4. Ac bronchitis or bronchiolitis