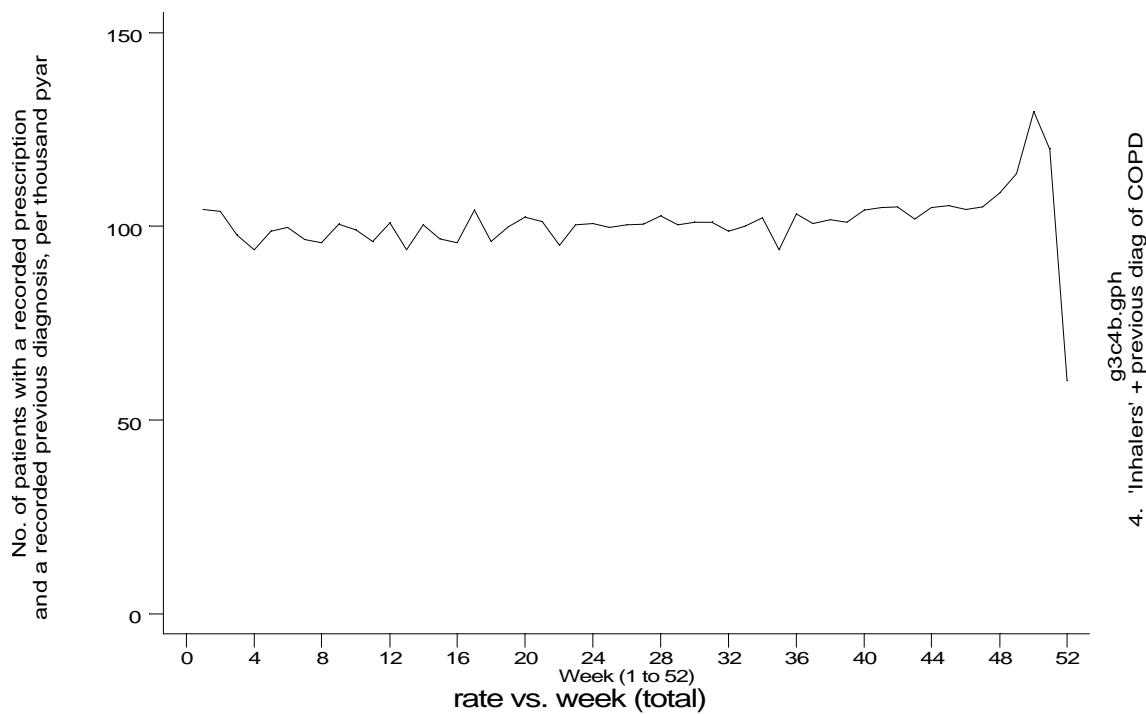
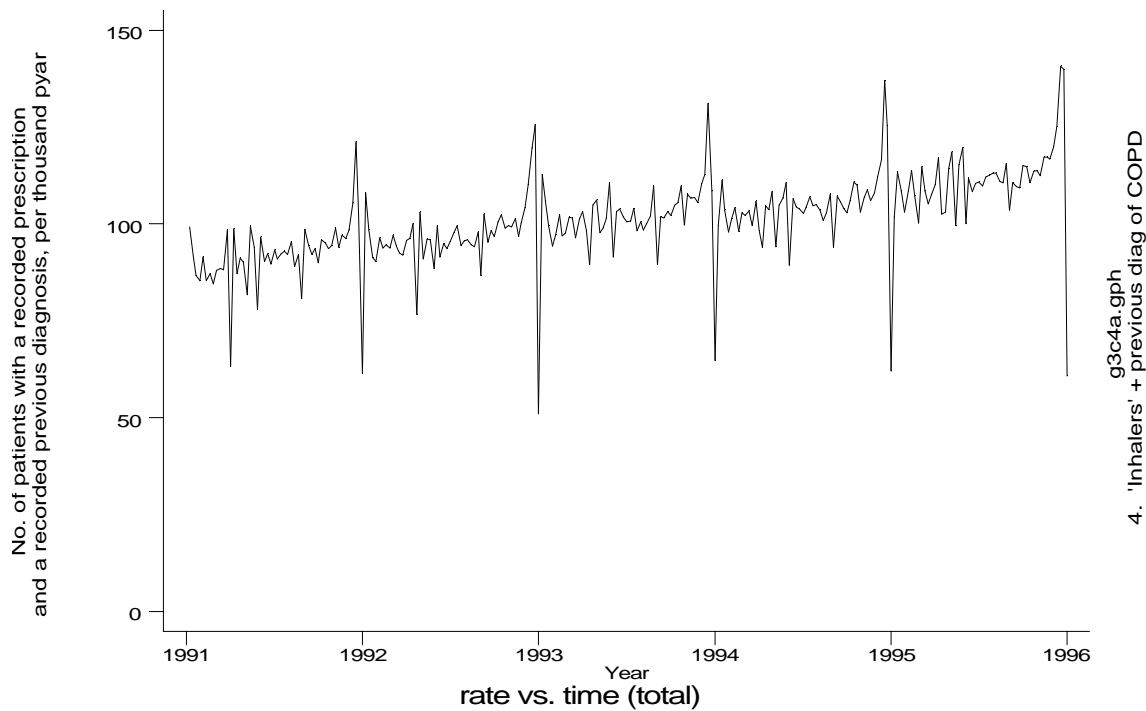
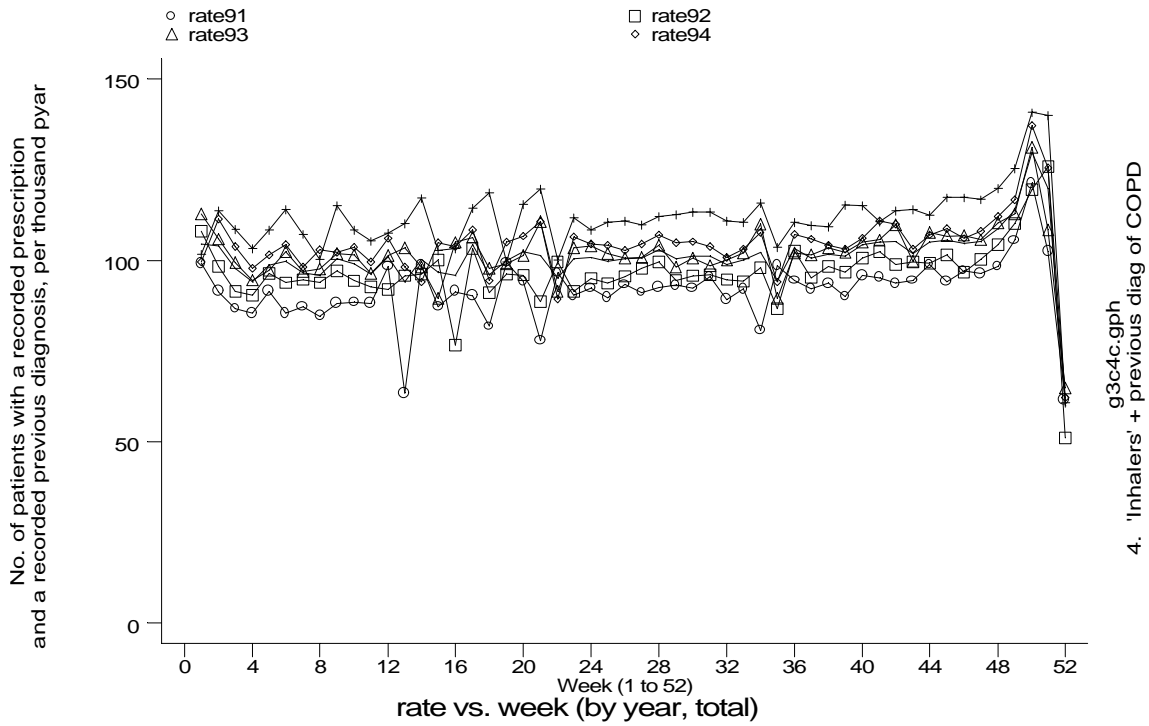


- GPRD Inhaler prescription and diagnosis of COPD, England 1991-95

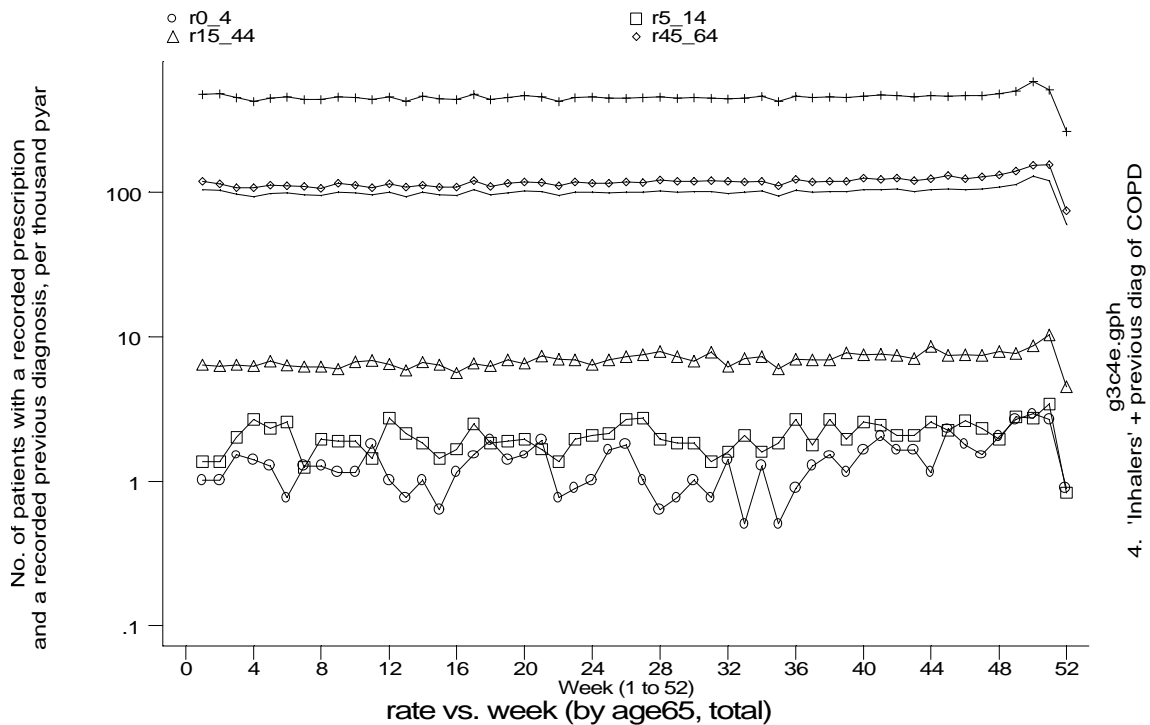
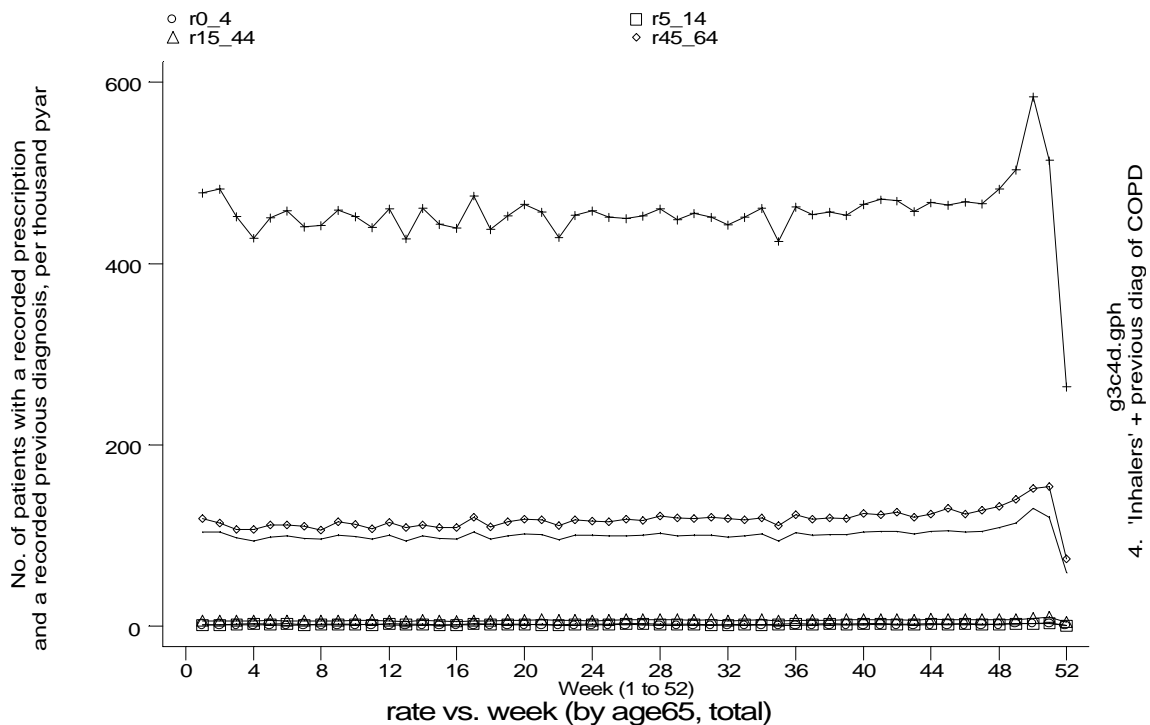


A7 COPD standard output graphs
Seasonality (crude rates by week of year)

- GPRD Inhaler prescription and diagnosis of COPD, England 1991-95

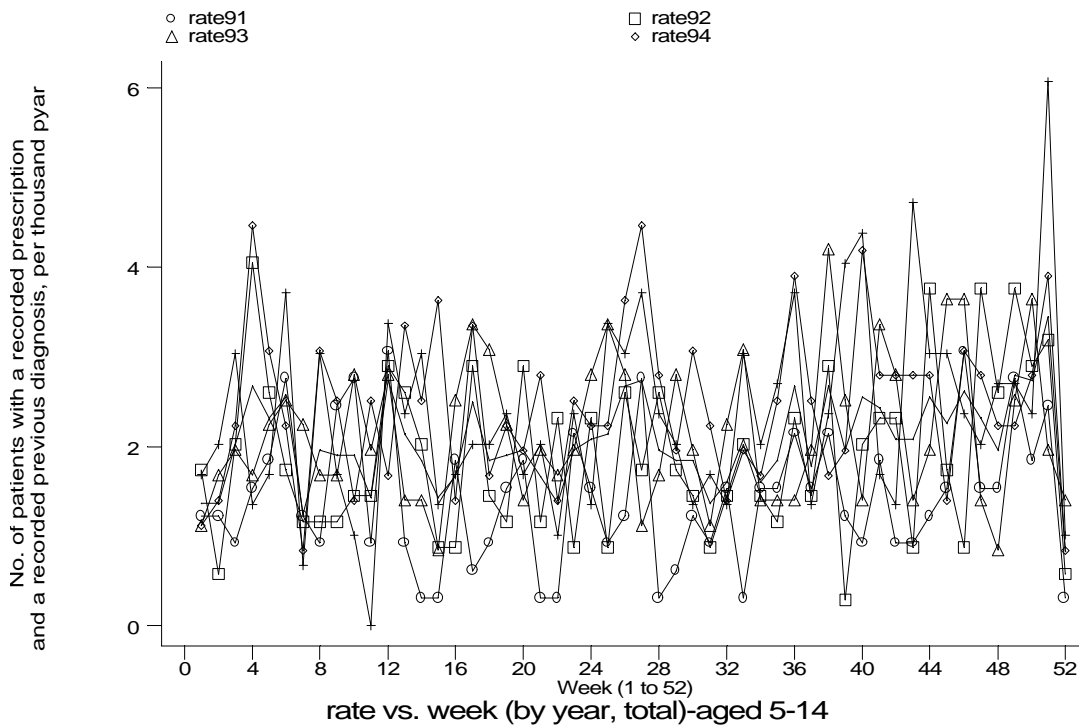
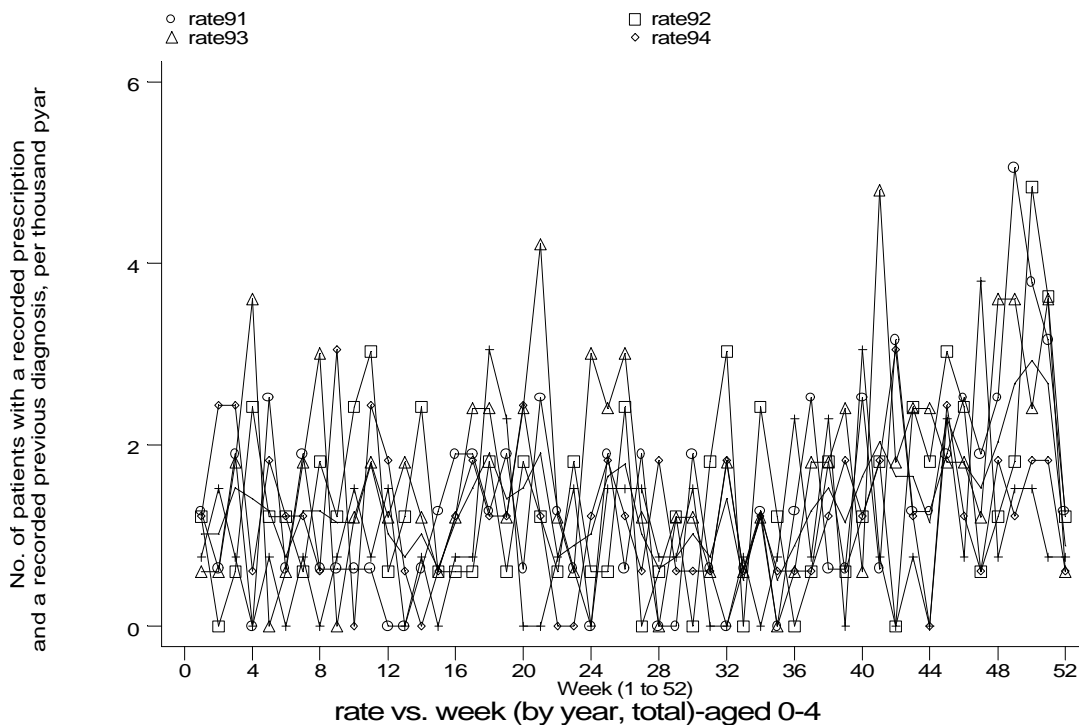


- GPRD Inhaler prescription and diagnosis of COPD, England 1991-95



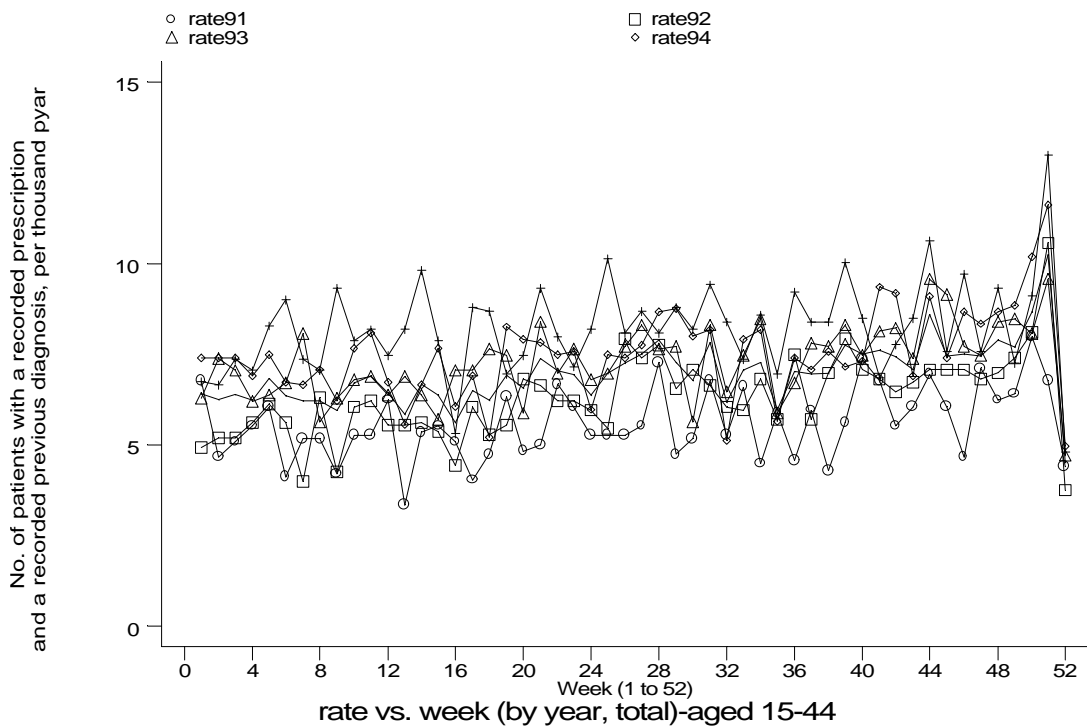
A7 COPD standard output graphs
Seasonality (crude rates by week of year)

- GPRD Inhaler prescription and diagnosis of COPD, England 1991-95

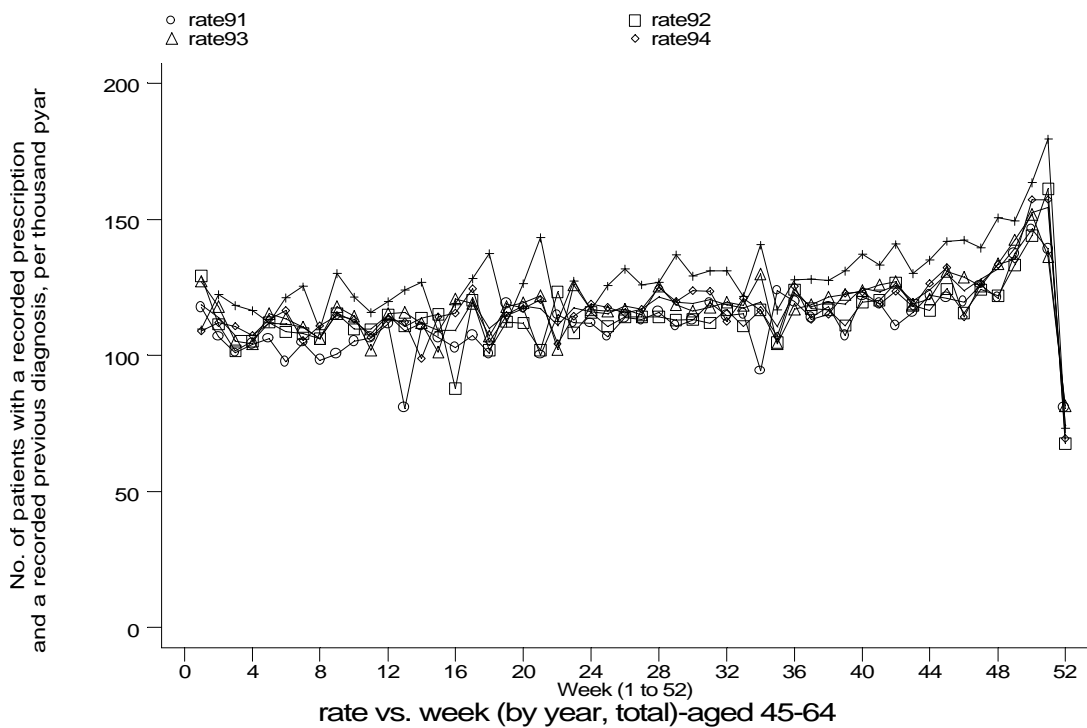


A7 COPD standard output graphs
Seasonality (crude rates by week of year)

- GPRD Inhaler prescription and diagnosis of COPD, England 1991-95



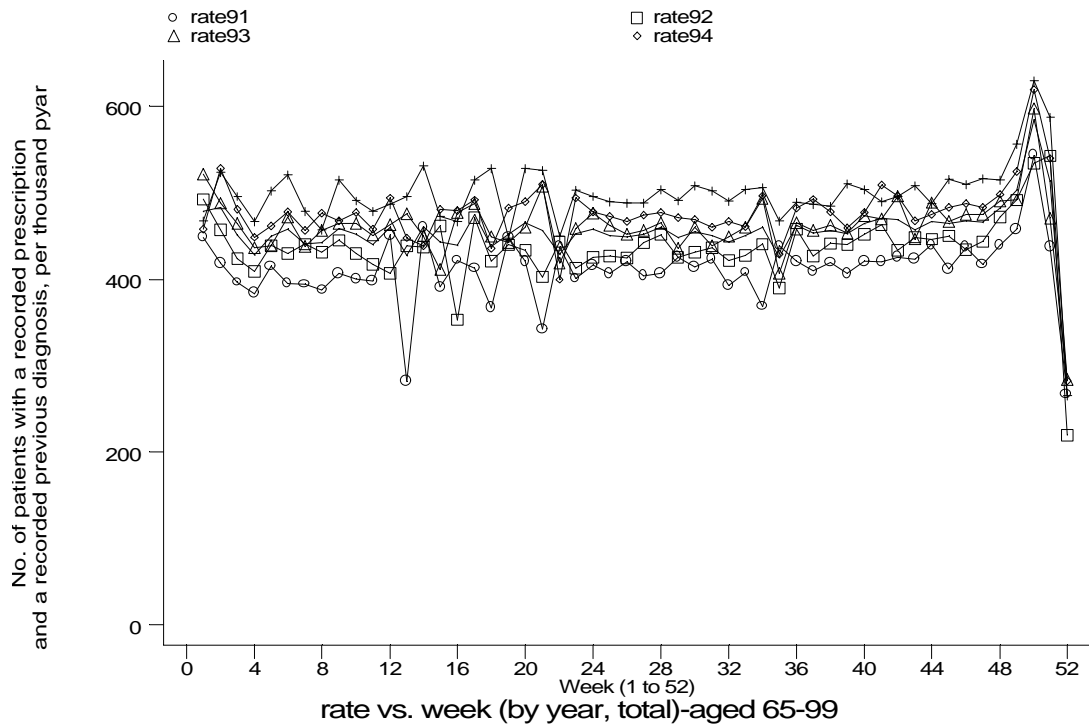
g3c4f3.gph: AGED 15-44
 4. 'Inhalers' + previous diag of COPD



g3c4f4.gph: AGED 45-64
 4. 'Inhalers' + previous diag of COPD

A7 COPD standard output graphs
Seasonality (crude rates by week of year)

- GPRD Inhaler prescription and diagnosis of COPD, England 1991-95



g3c4f5.gph: AGED 65-89
4. 'Inhalers' + previous diag of COPD