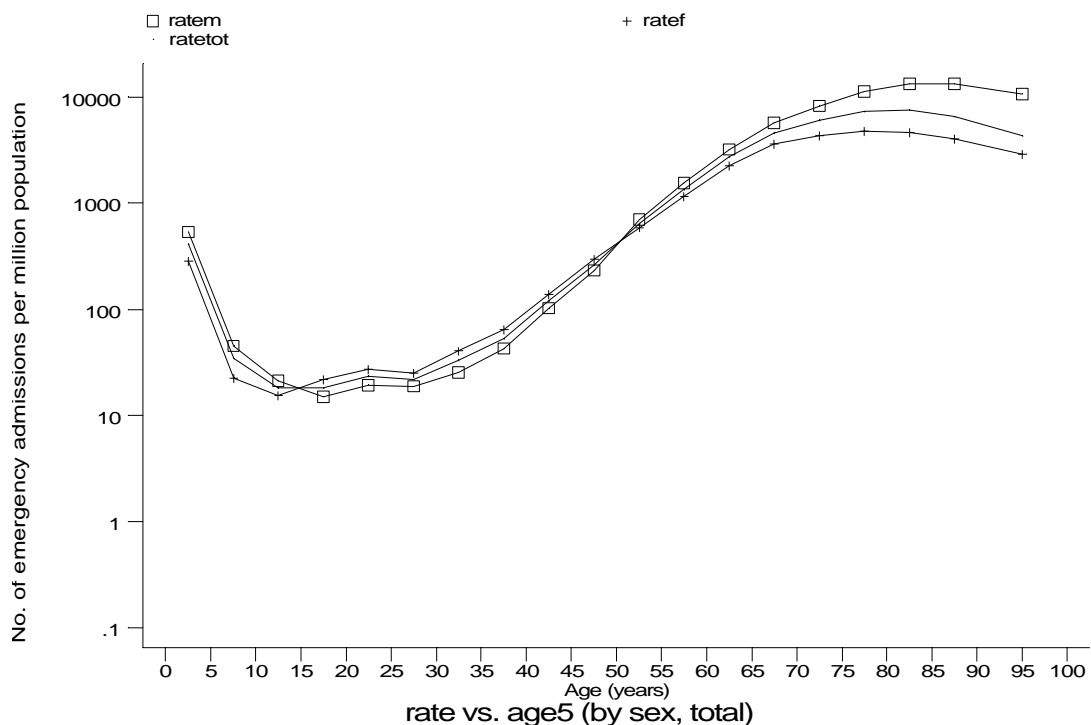
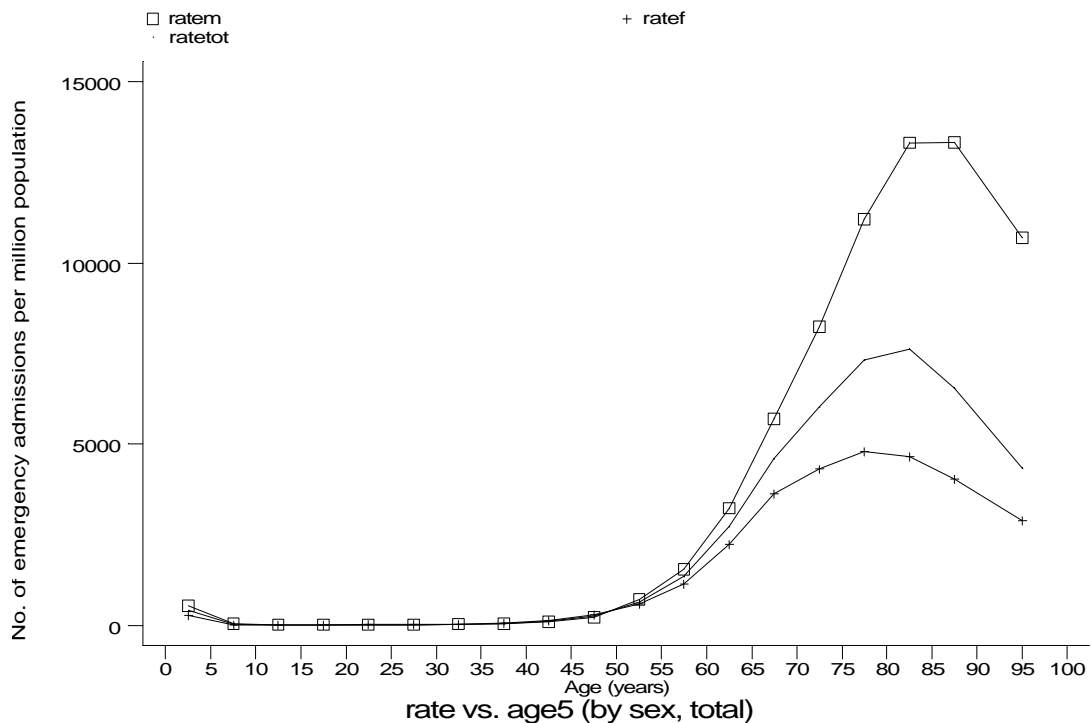


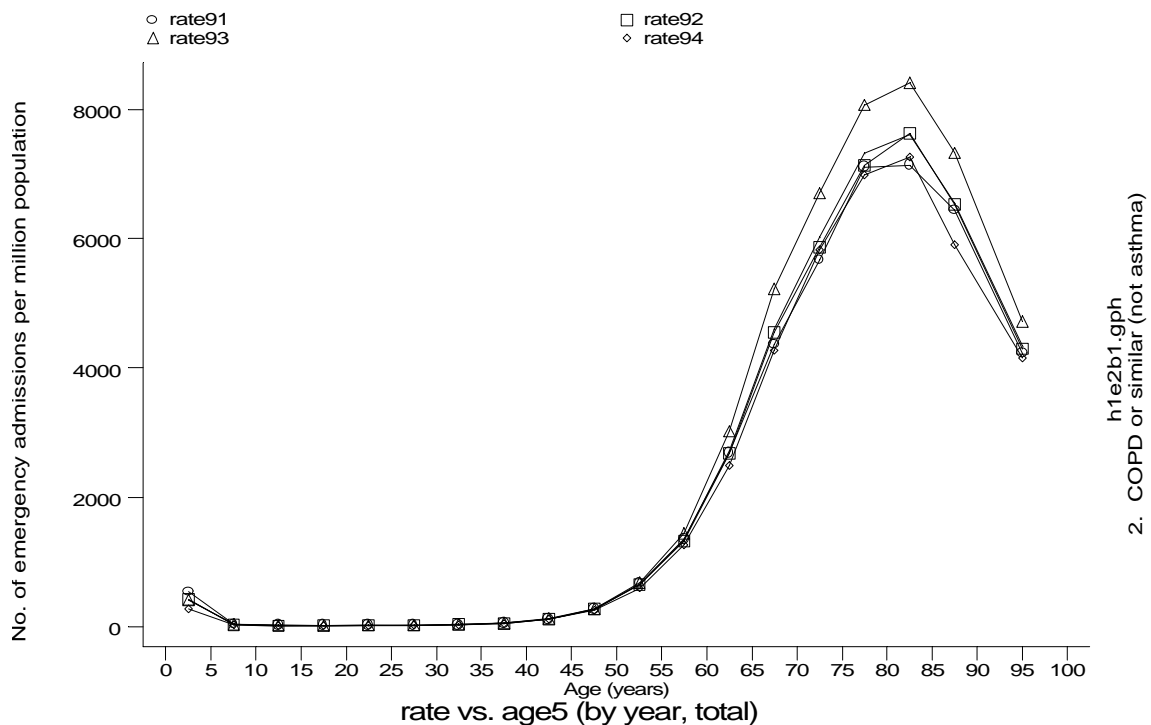
Age-sex distributions, yearly trends and cohort analysis (crude rates)

- HES Emergency admissions, England 1991-94

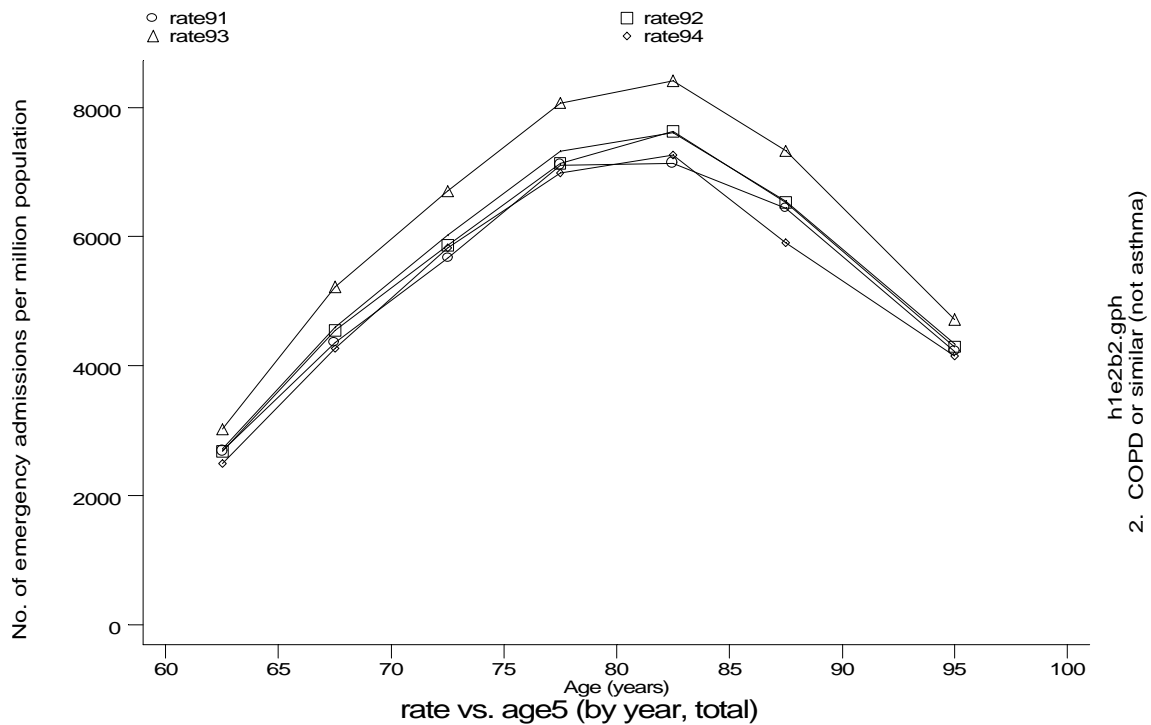


Age-sex distributions, yearly trends and cohort analysis (crude rates)

- HES Emergency admissions, England 1991-94



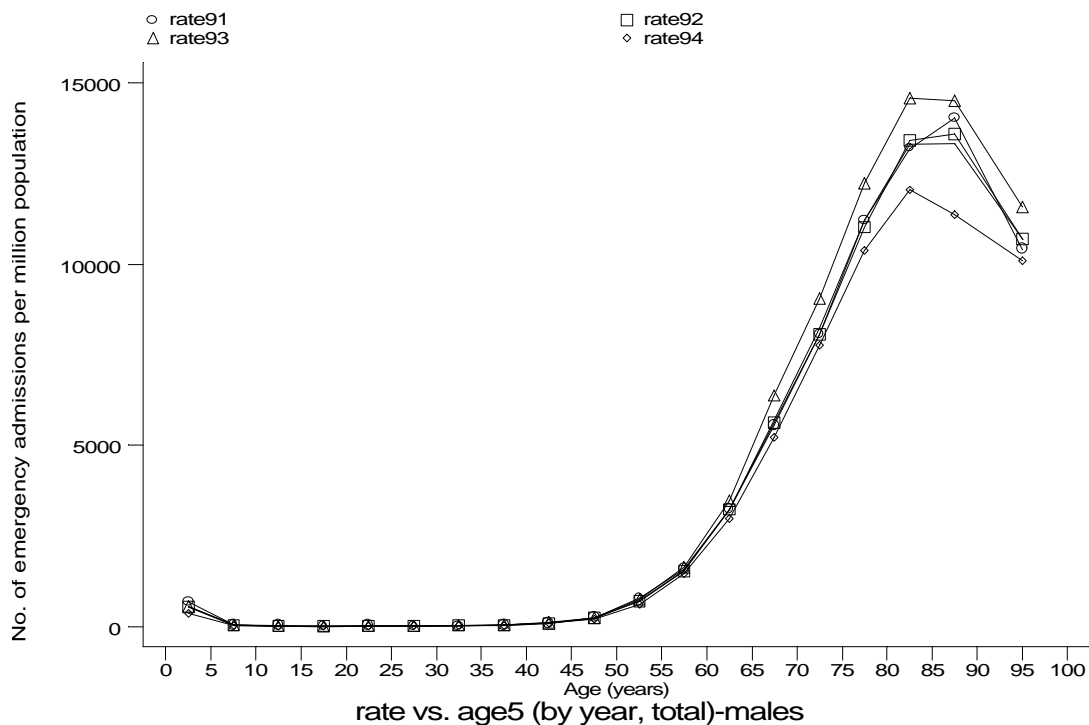
h1e2b1.gph
2. COPD or similar (not asthma)



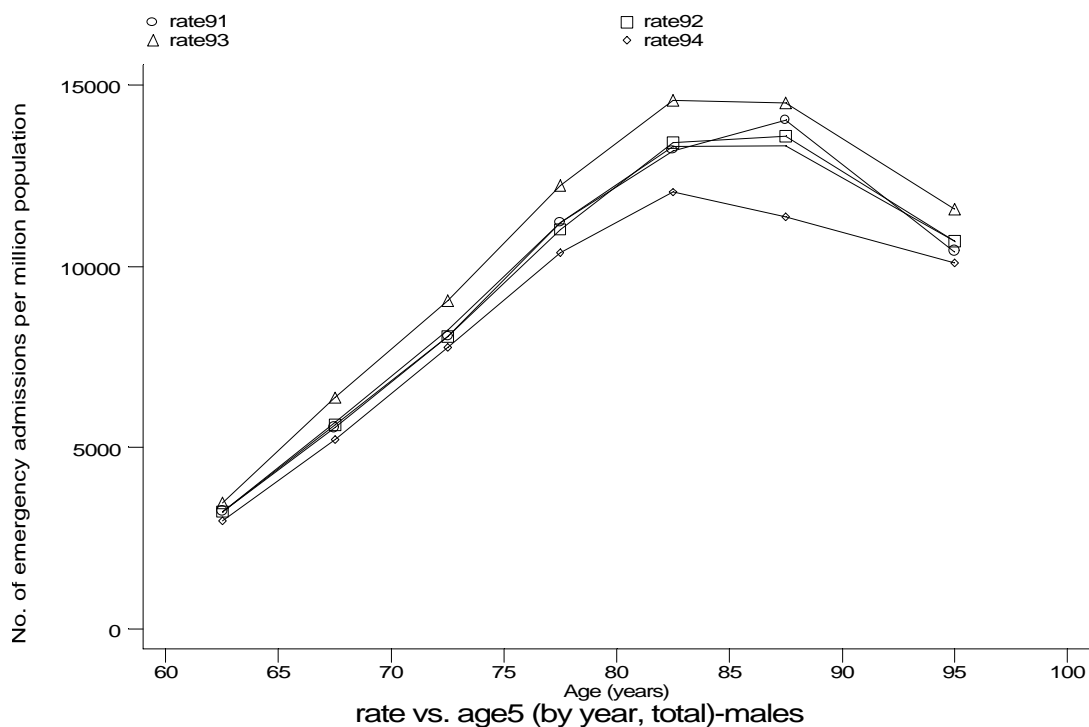
h1e2b2.gph
2. COPD or similar (not asthma)

Age-sex distributions, yearly trends and cohort analysis (crude rates)

- HES Emergency admissions, England 1991-94



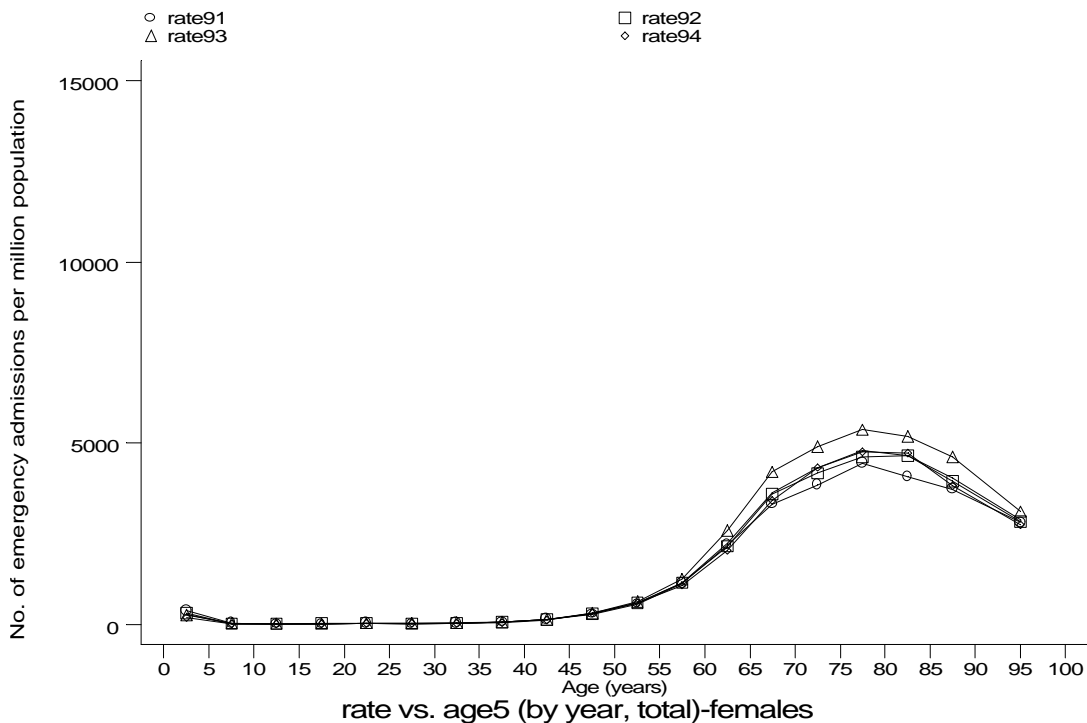
h1e2b1m.gph: MALES
2. COPD or similar (not asthma)



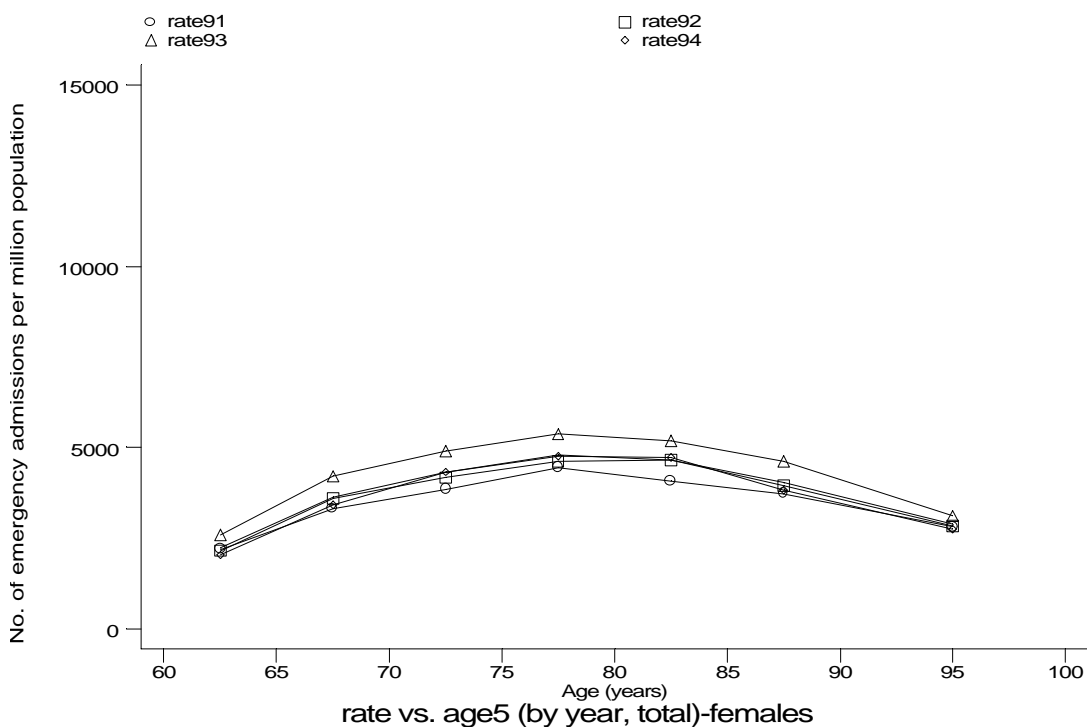
h1e2b2m.gph: MALES
2. COPD or similar (not asthma)

Age-sex distributions, yearly trends and cohort analysis (crude rates)

- HES Emergency admissions, England 1991-94



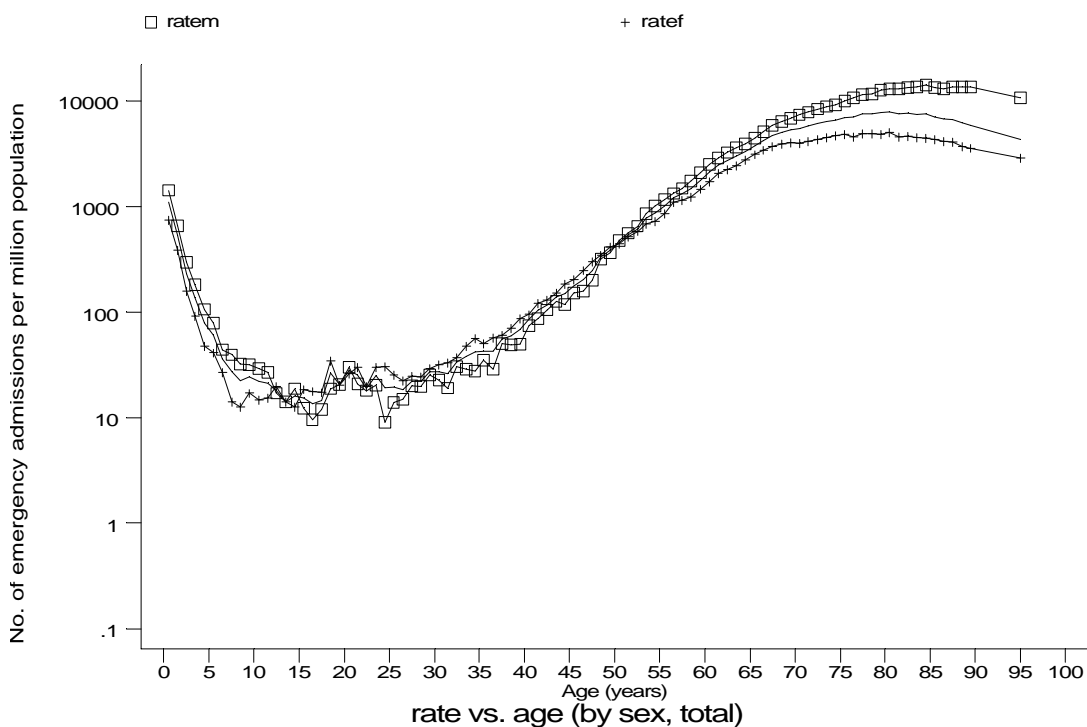
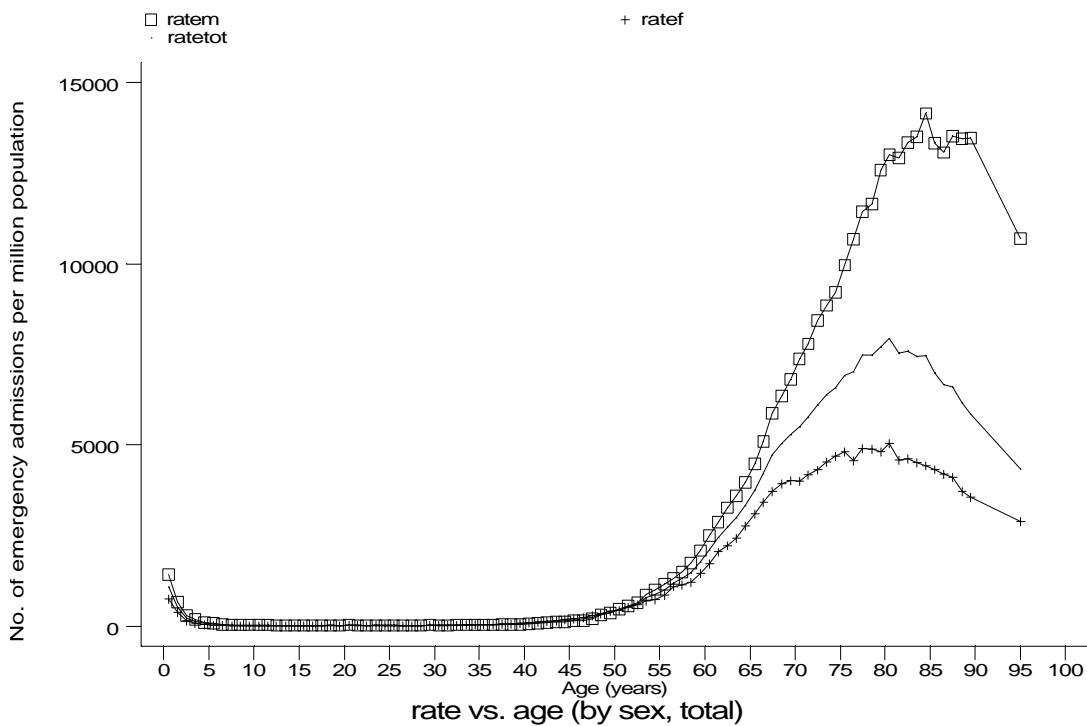
h1e2b1f.gph: FEMALES
2. COPD or similar (not asthma)



h1e2b2f.gph: FEMALES
2. COPD or similar (not asthma)

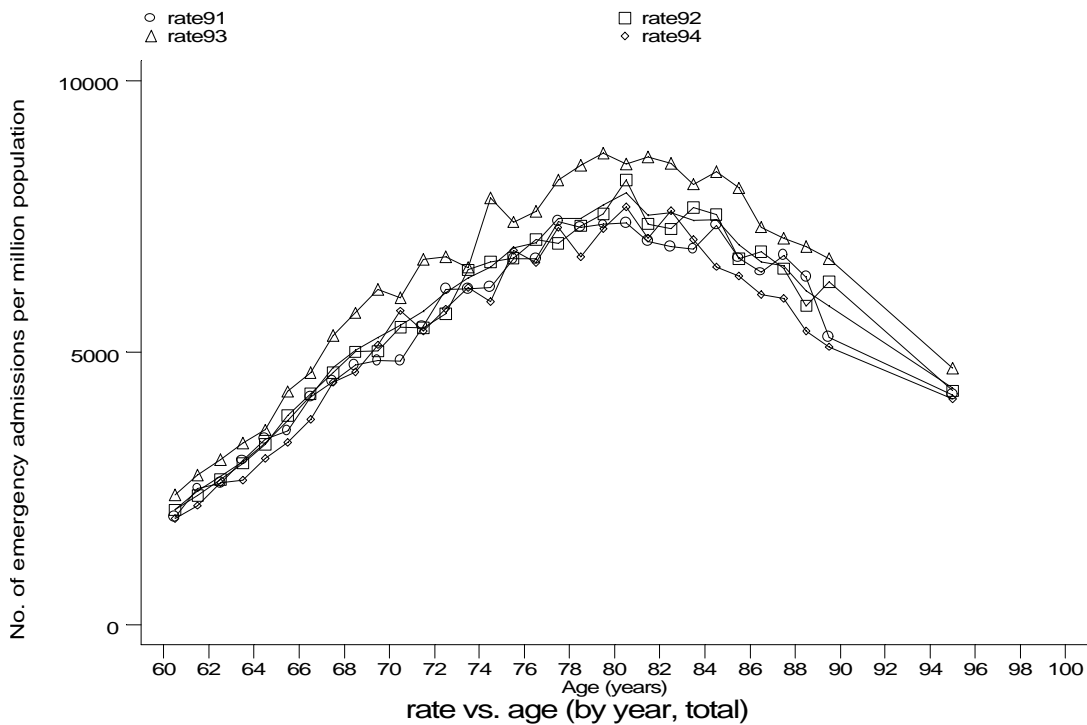
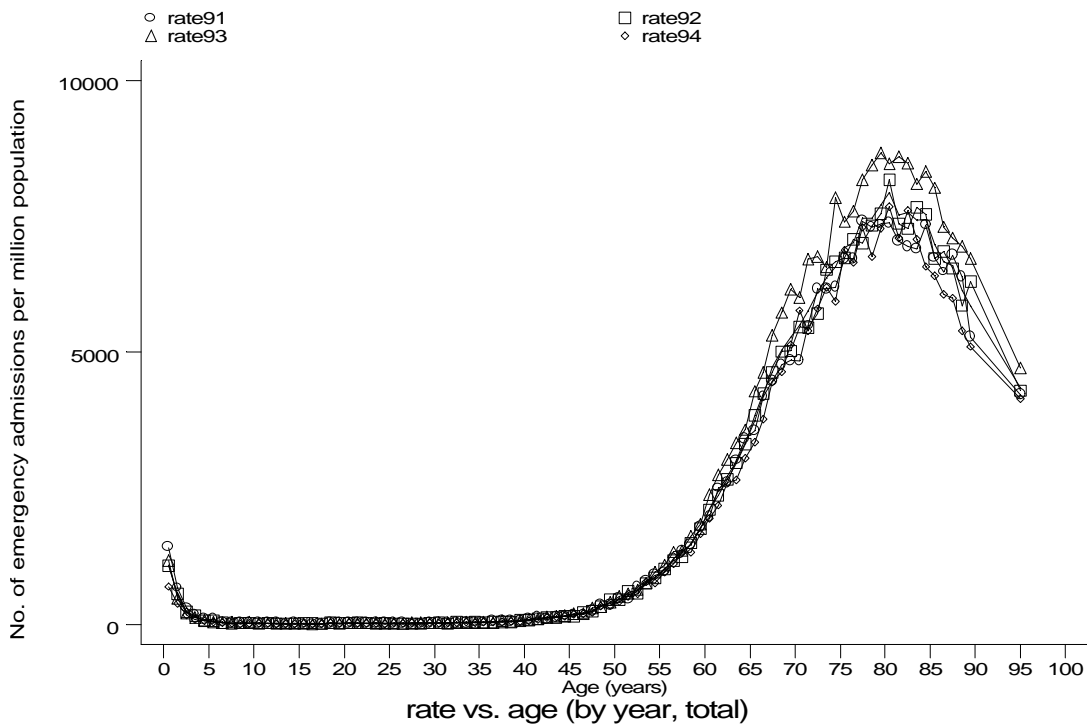
Age-sex distributions, yearly trends and cohort analysis (crude rates)

- HES Emergency admissions, England 1991-94



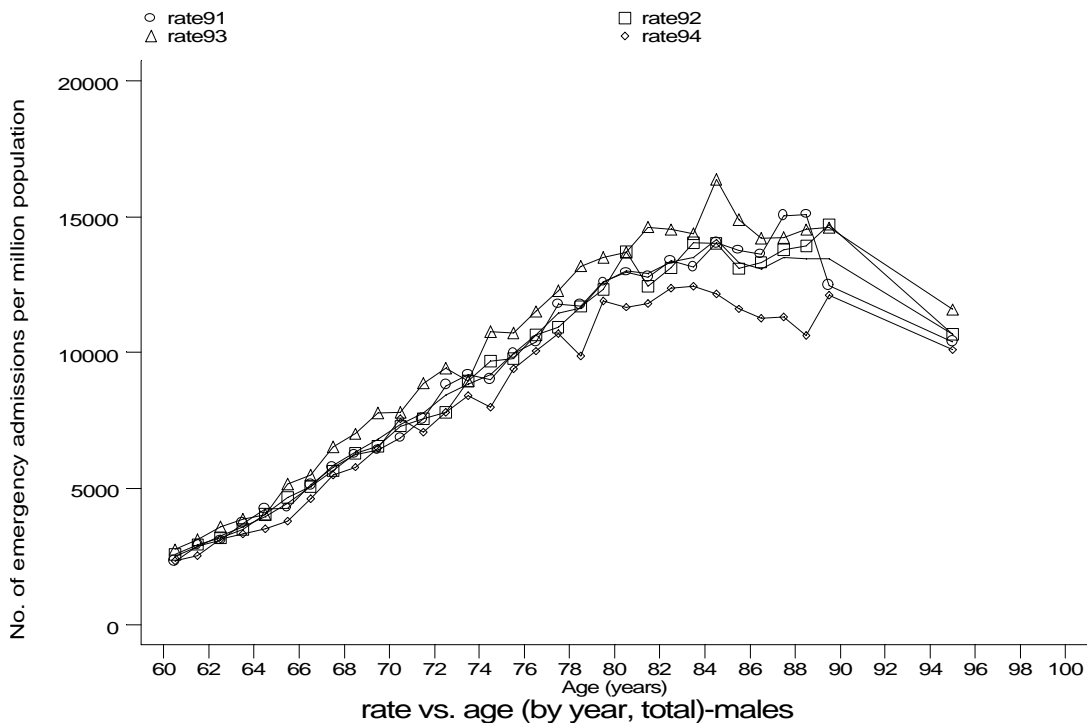
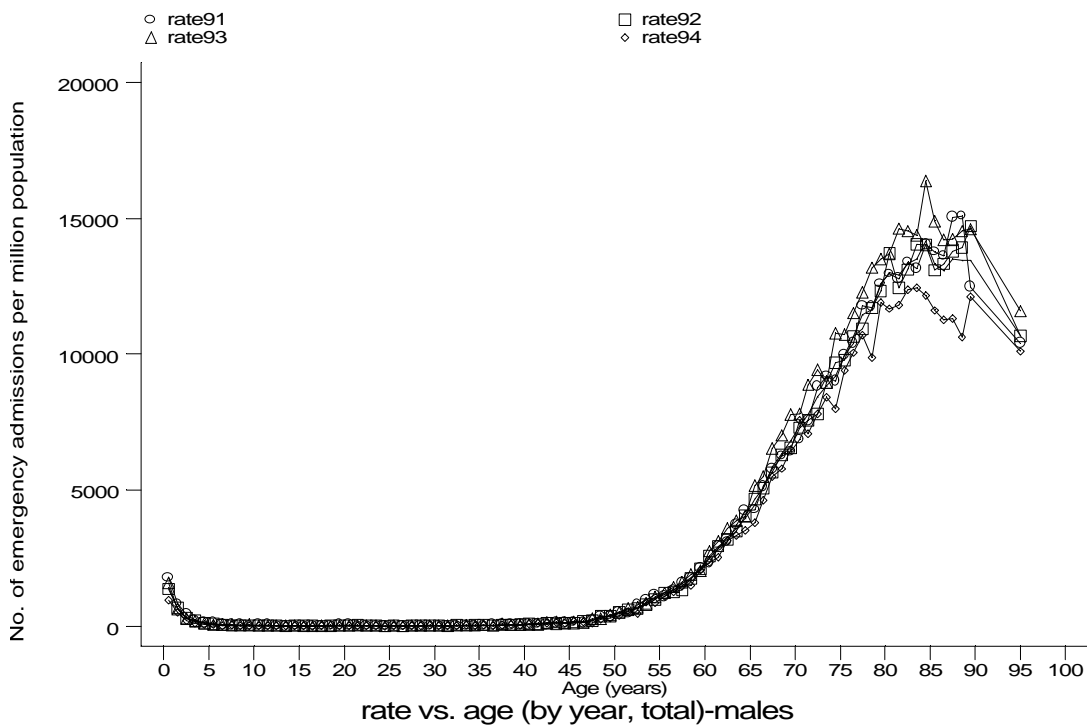
Age-sex distributions, yearly trends and cohort analysis (crude rates)

- HES Emergency admissions, England 1991-94



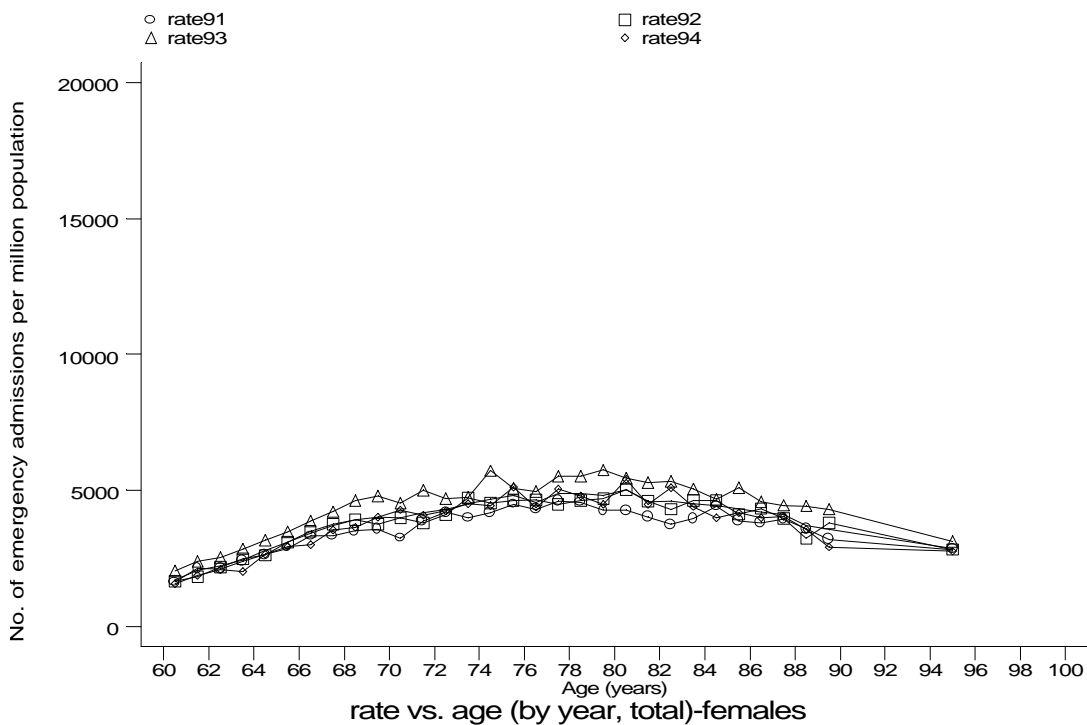
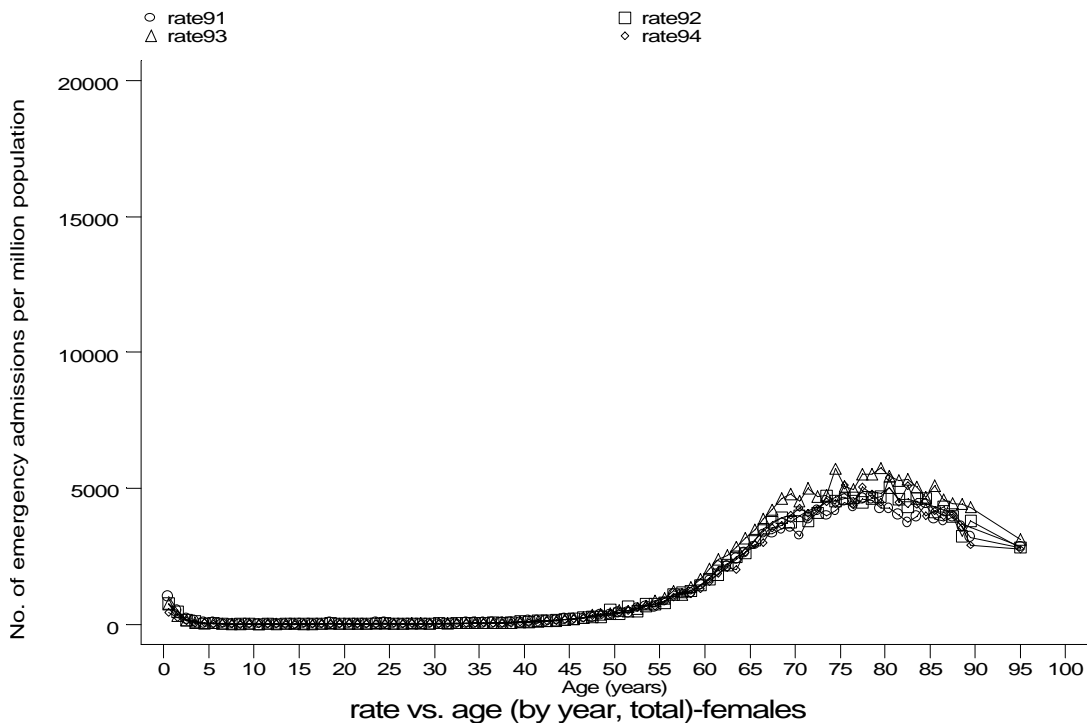
Age-sex distributions, yearly trends and cohort analysis (crude rates)

- HES Emergency admissions, England 1991-94



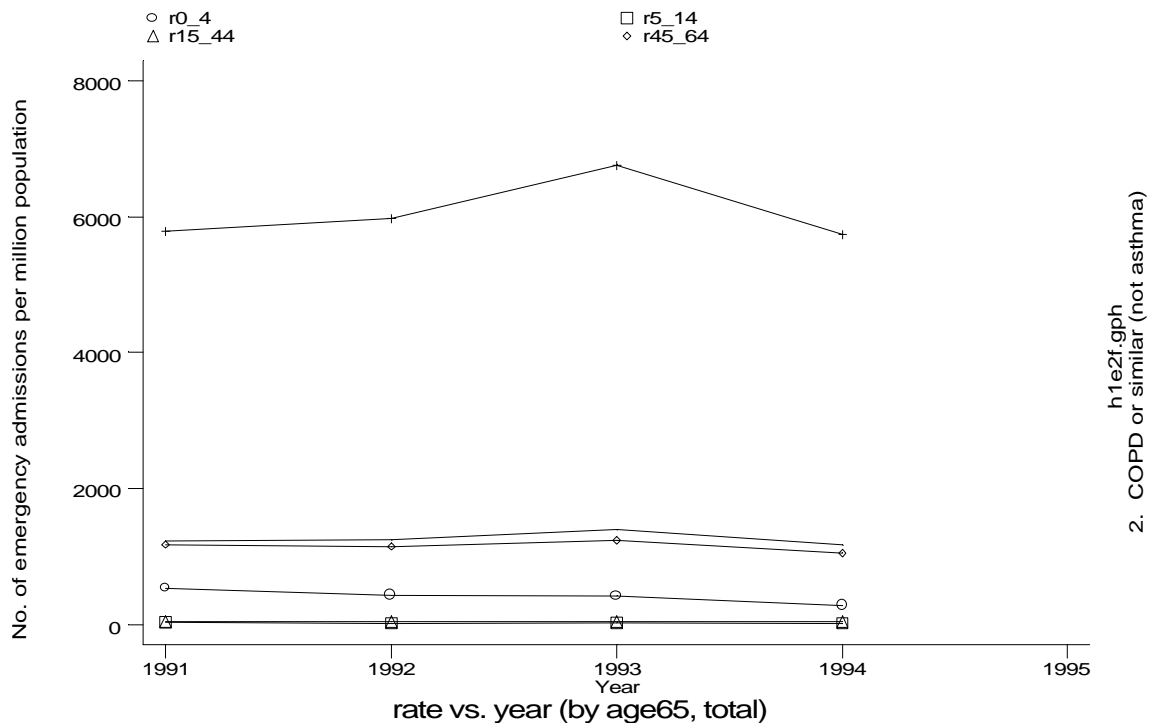
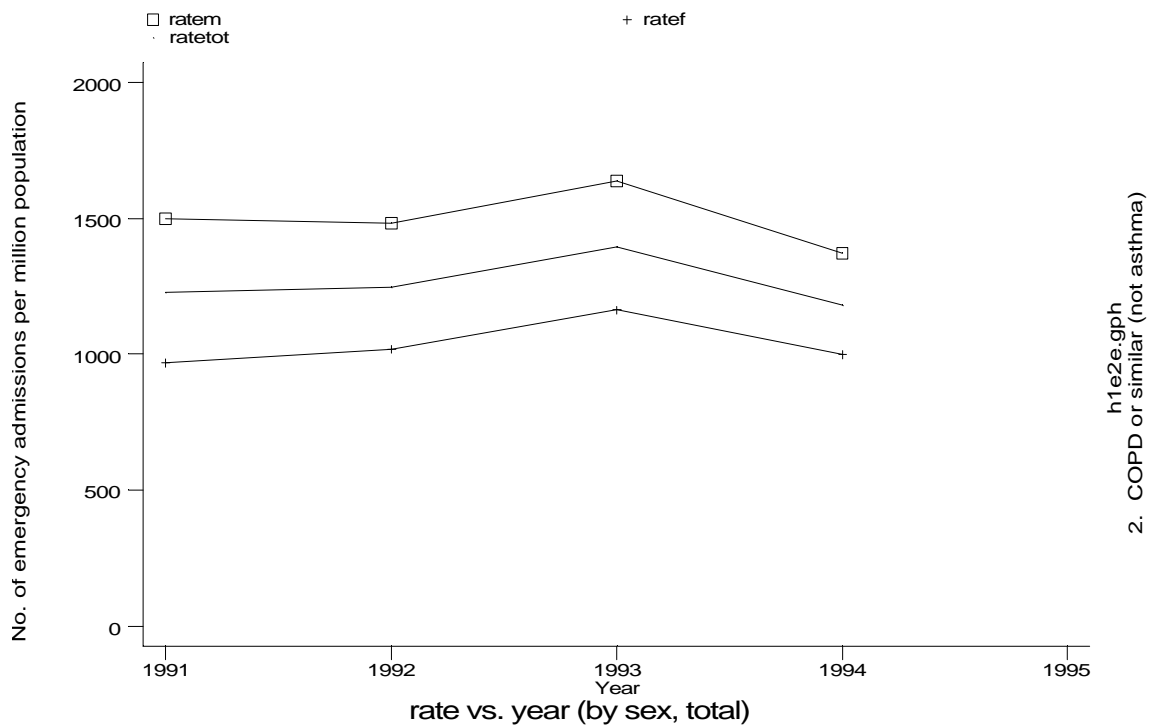
Age-sex distributions, yearly trends and cohort analysis (crude rates)

- HES Emergency admissions, England 1991-94



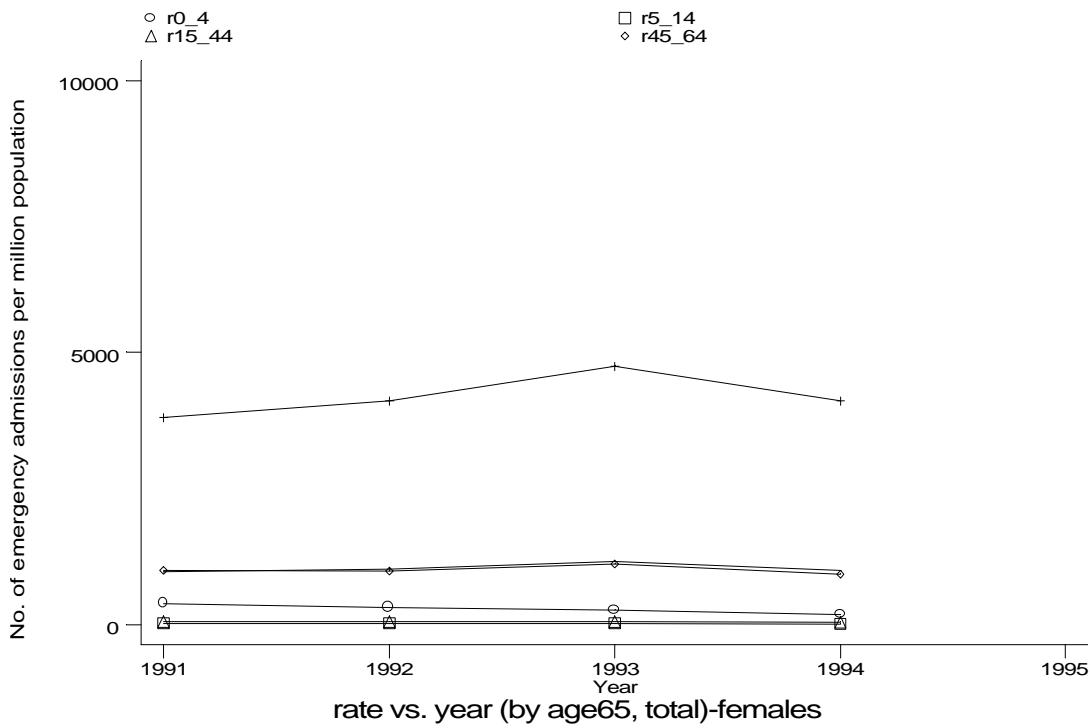
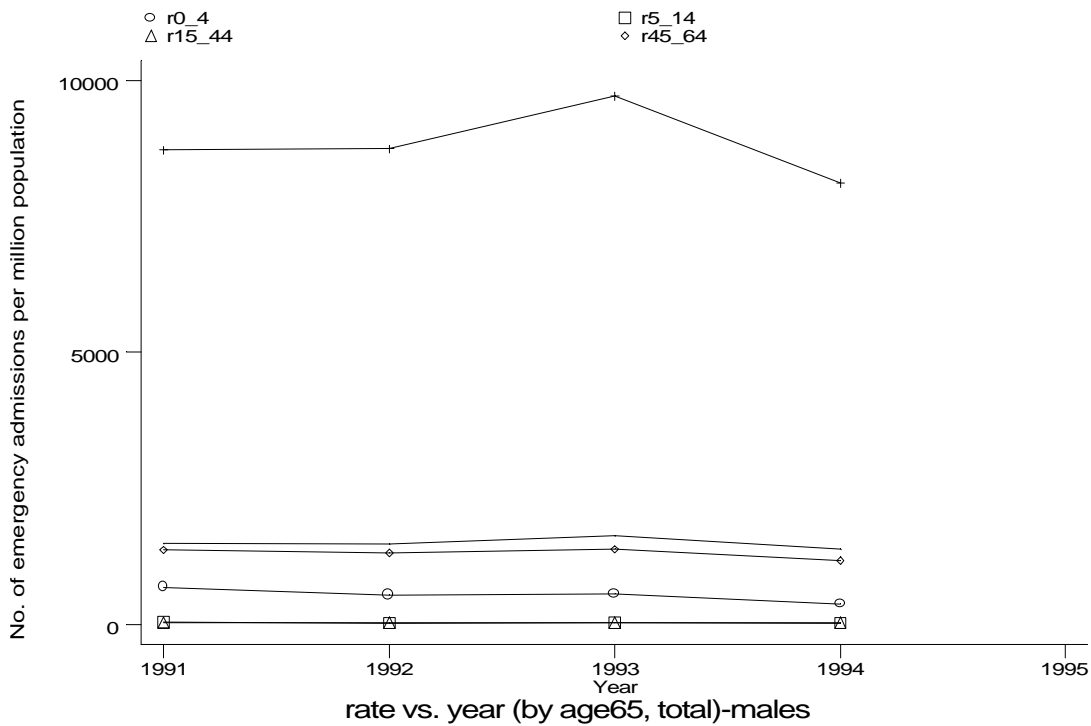
Age-sex distributions, yearly trends and cohort analysis (crude rates)

- HES Emergency admissions, England 1991-94



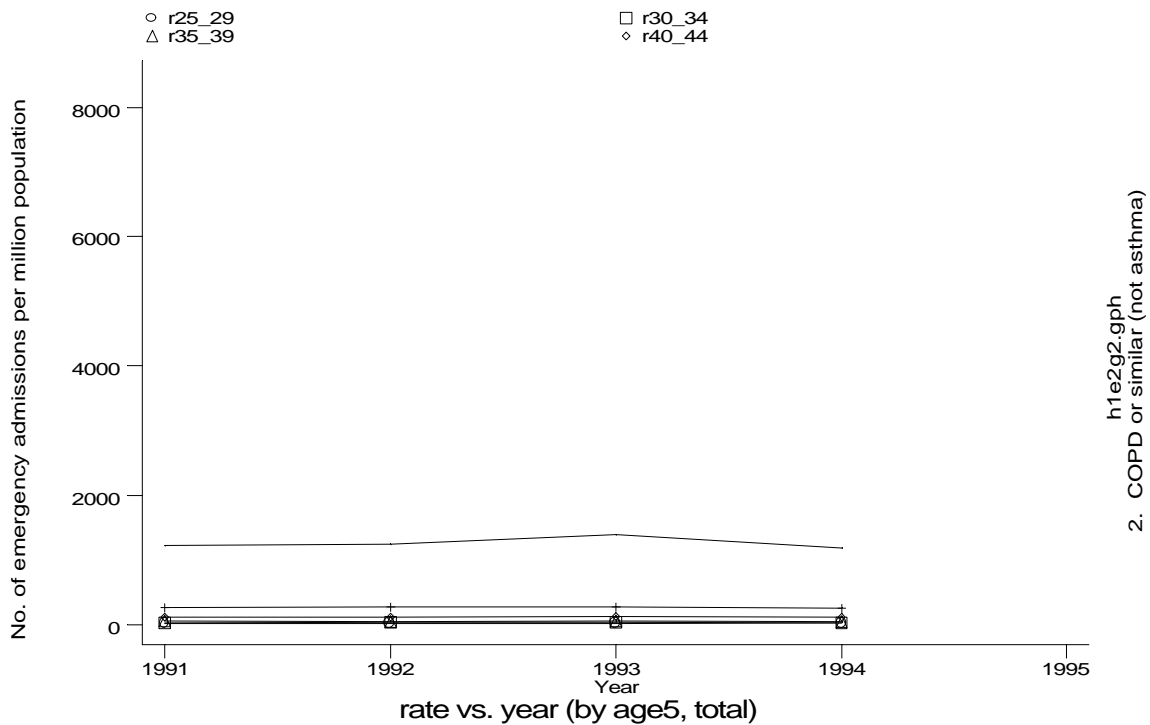
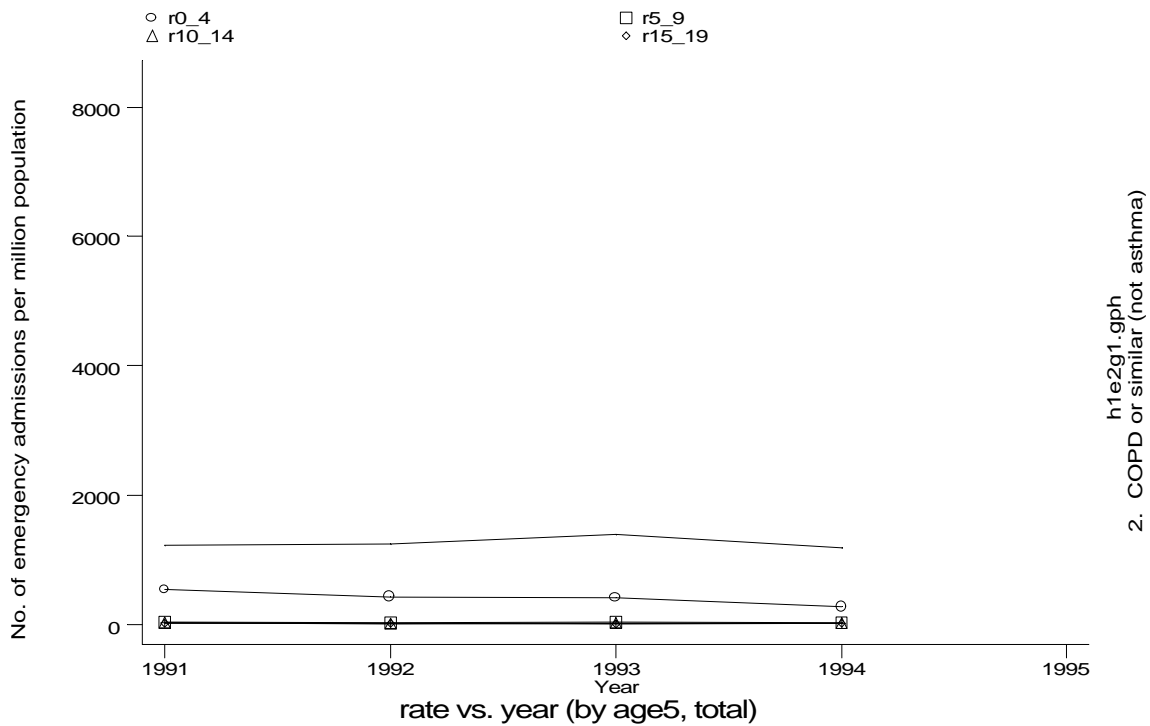
Age-sex distributions, yearly trends and cohort analysis (crude rates)

- HES Emergency admissions, England 1991-94



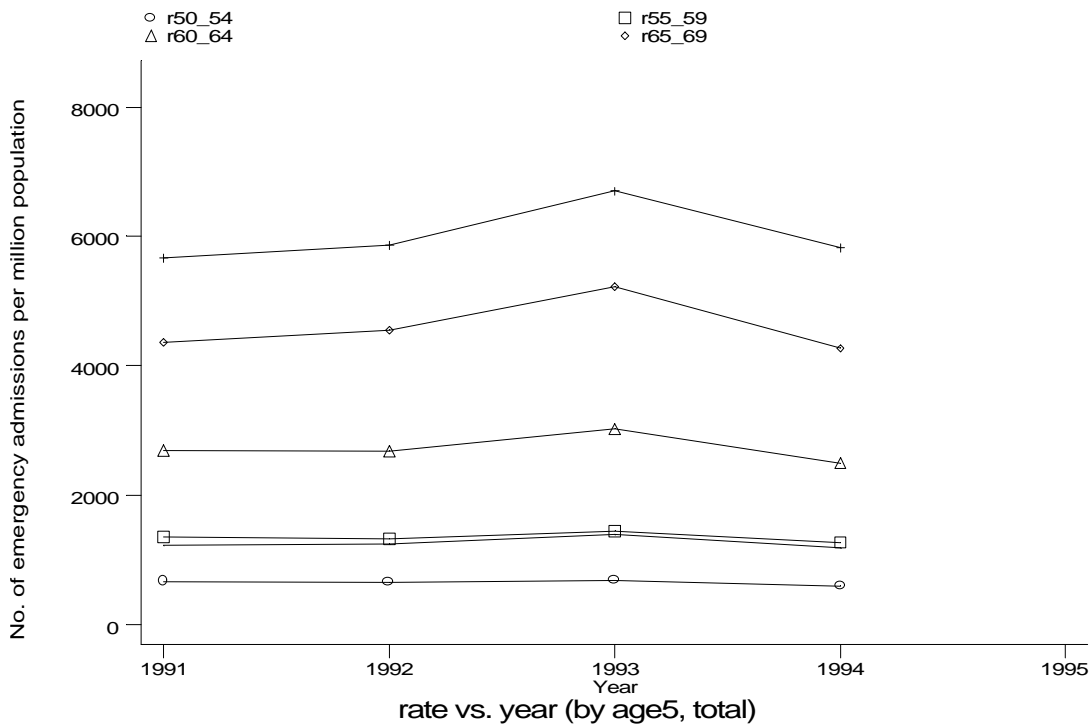
Age-sex distributions, yearly trends and cohort analysis (crude rates)

- HES Emergency admissions, England 1991-94

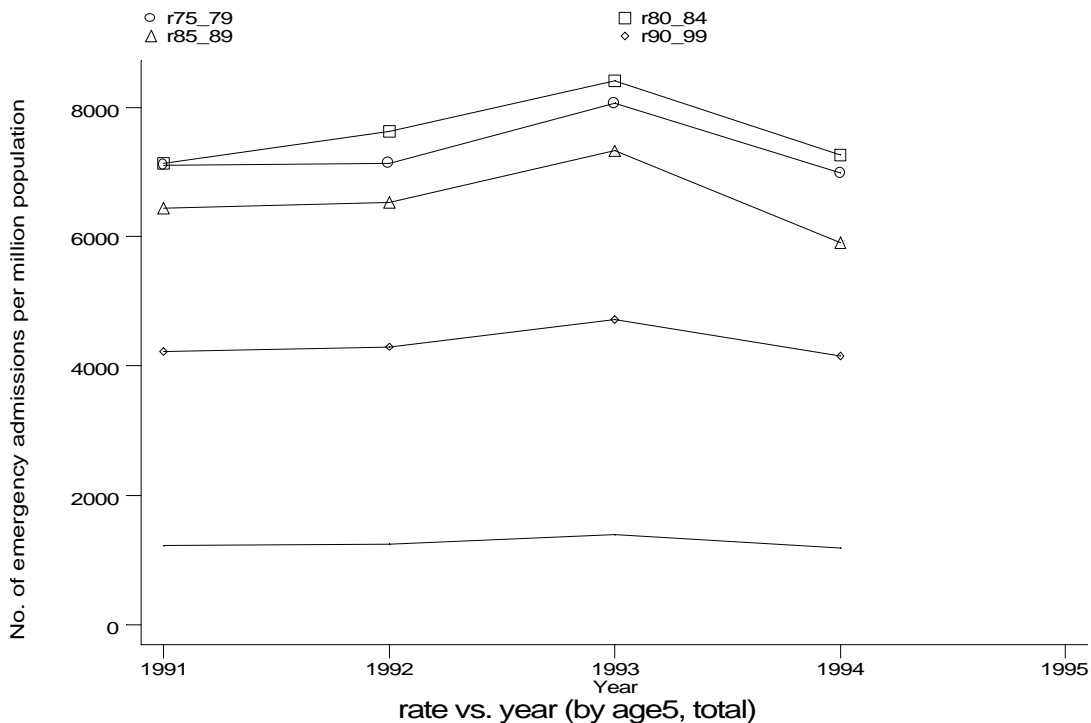


Age-sex distributions, yearly trends and cohort analysis (crude rates)

- HES Emergency admissions, England 1991-94



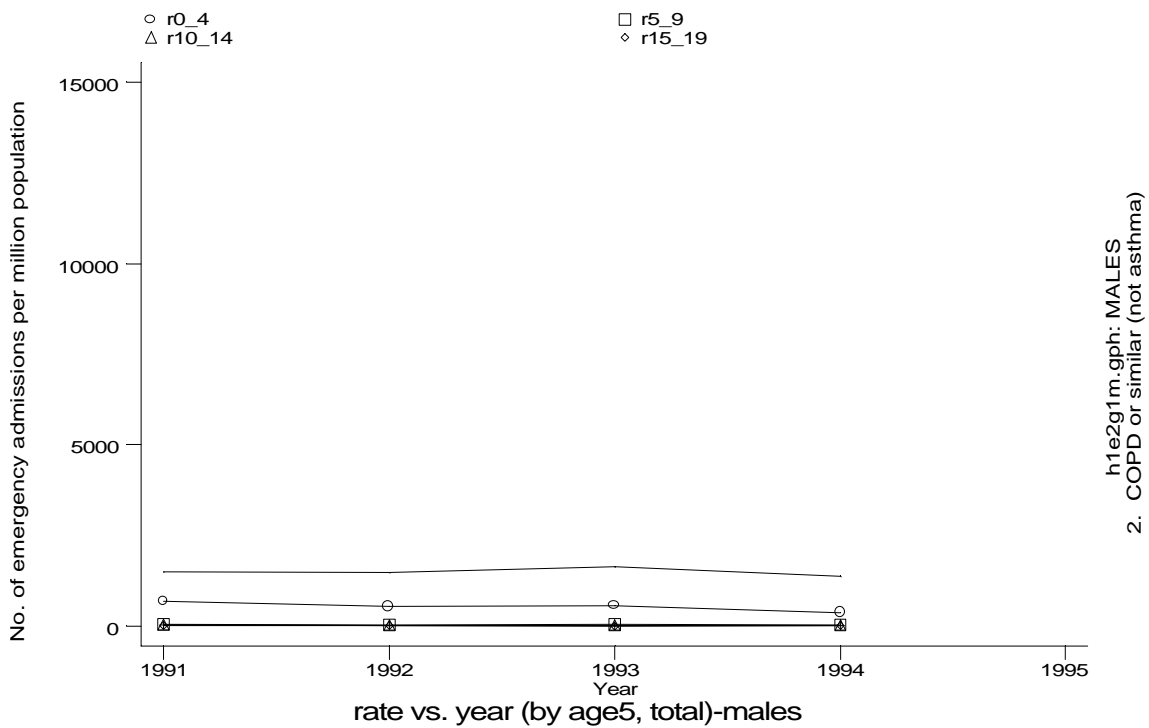
h1e2g3.gph
2. COPD or similar (not asthma)



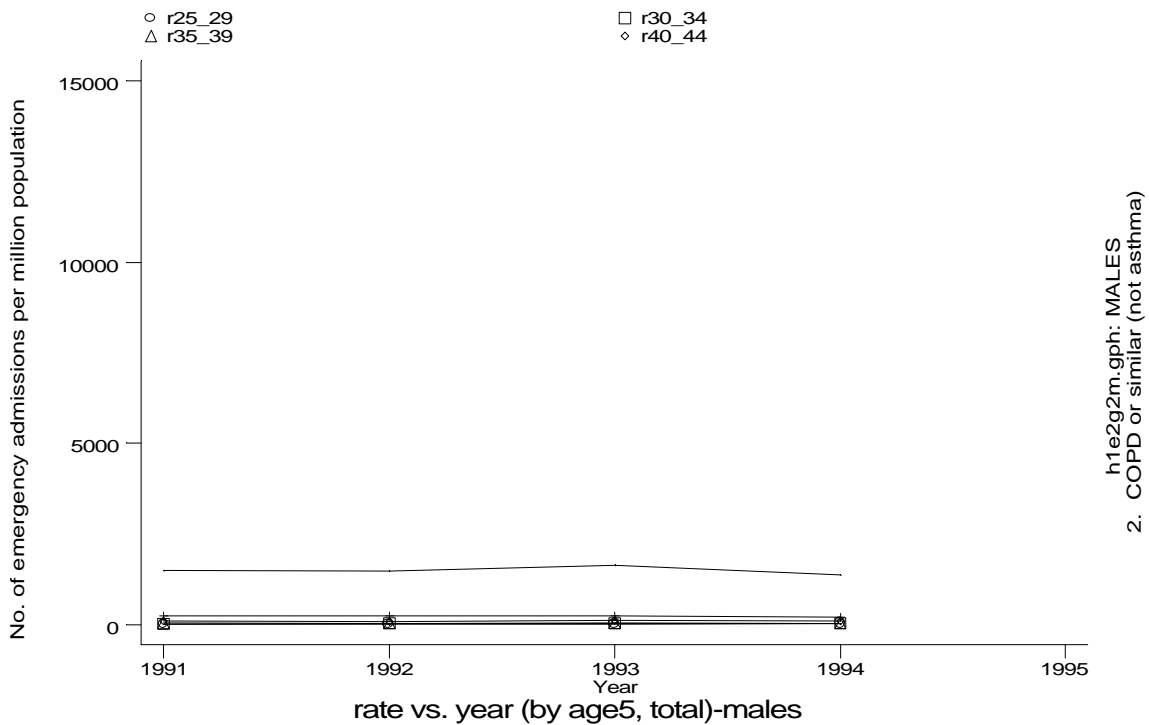
h1e2g4.gph
2. COPD or similar (not asthma)

Age-sex distributions, yearly trends and cohort analysis (crude rates)

- HES Emergency admissions, England 1991-94



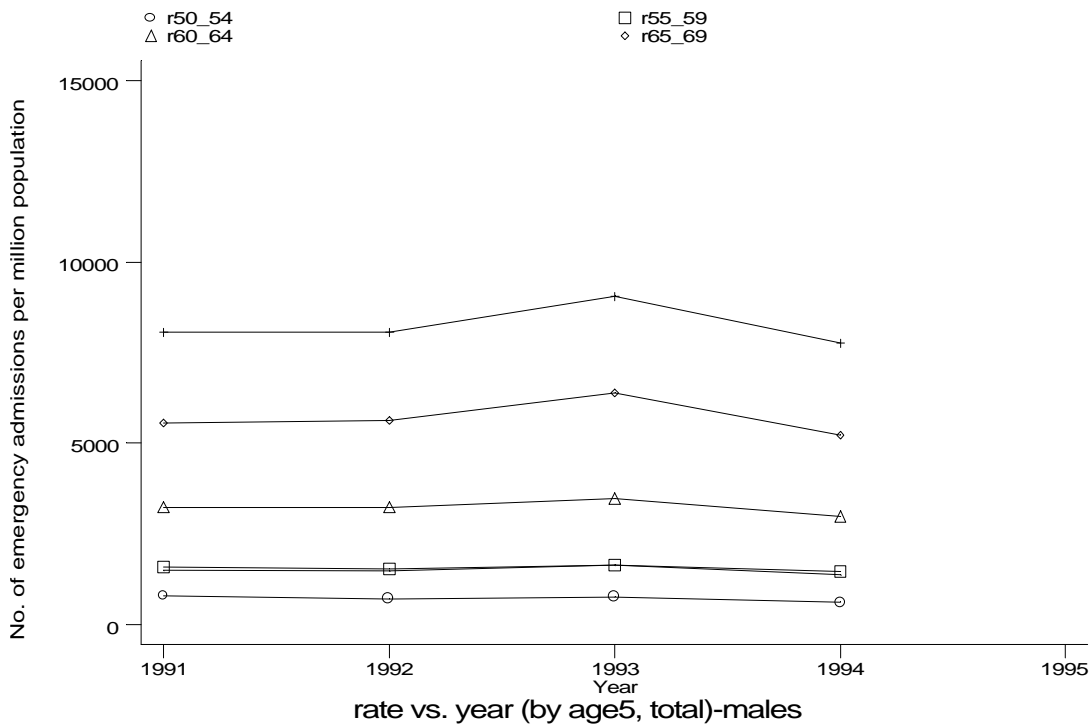
h1e2g1m.gph: MALES
2. COPD or similar (not asthma)



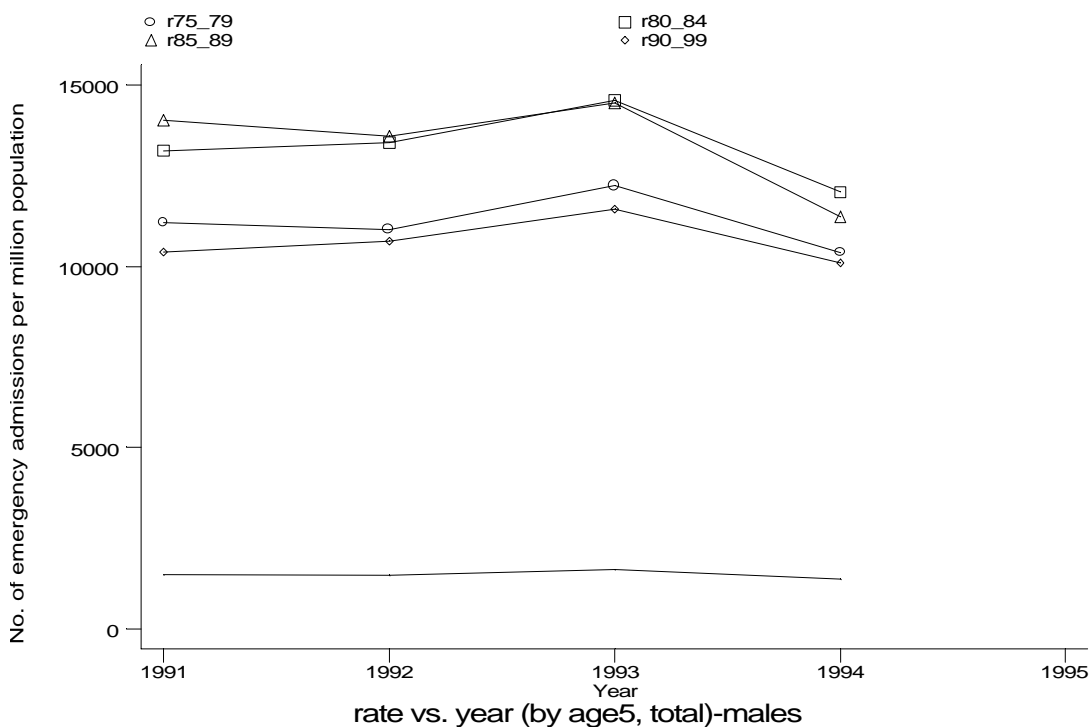
h1e2g2m.gph: MALES
2. COPD or similar (not asthma)

Age-sex distributions, yearly trends and cohort analysis (crude rates)

- HES Emergency admissions, England 1991-94



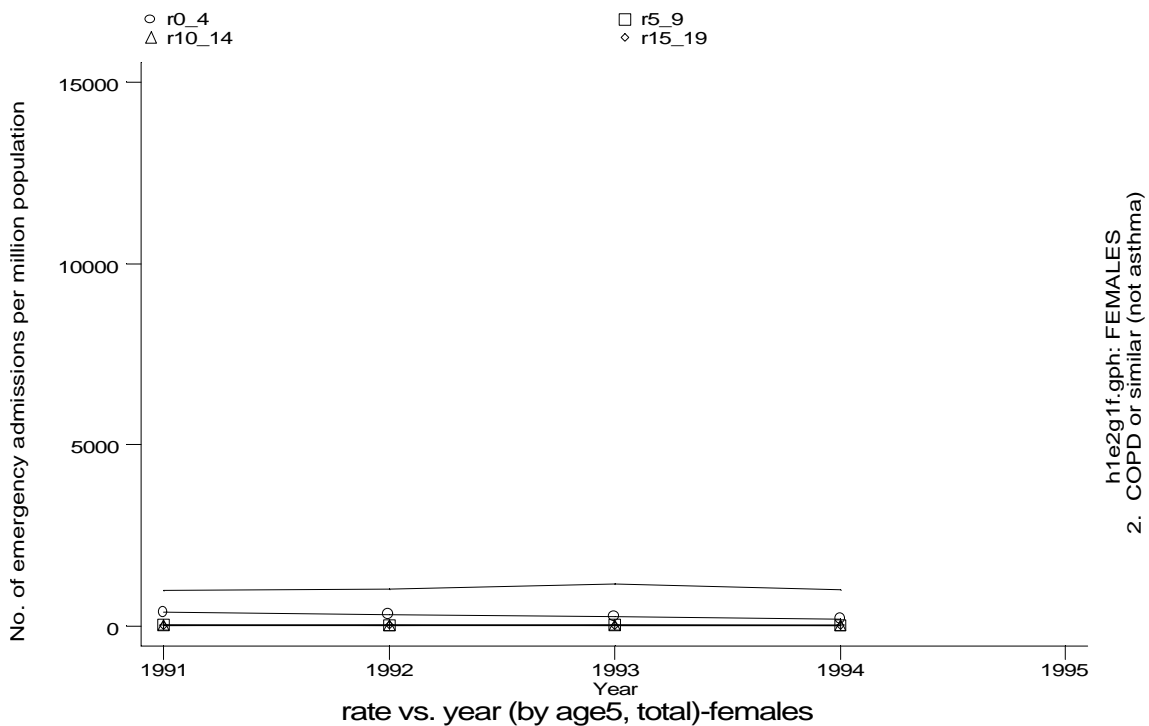
h1e2g3m.gph: MALES
2. COPD or similar (not asthma)



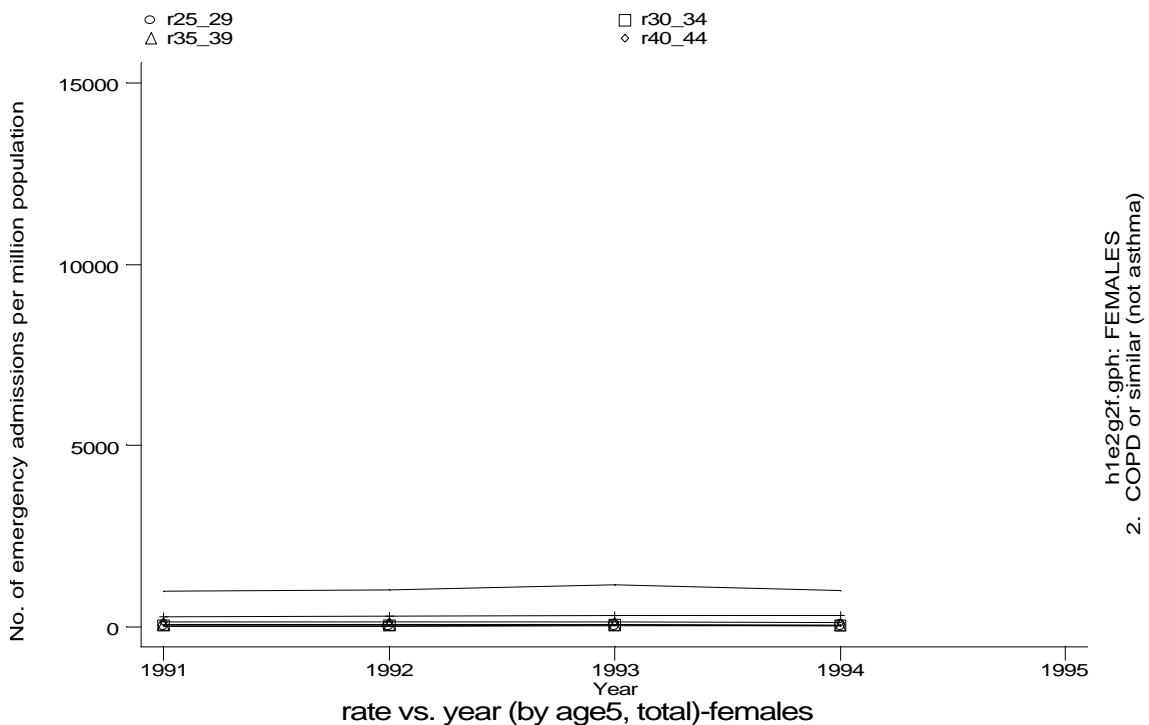
h1e2g4m.gph: MALES
2. COPD or similar (not asthma)

Age-sex distributions, yearly trends and cohort analysis (crude rates)

- HES Emergency admissions, England 1991-94



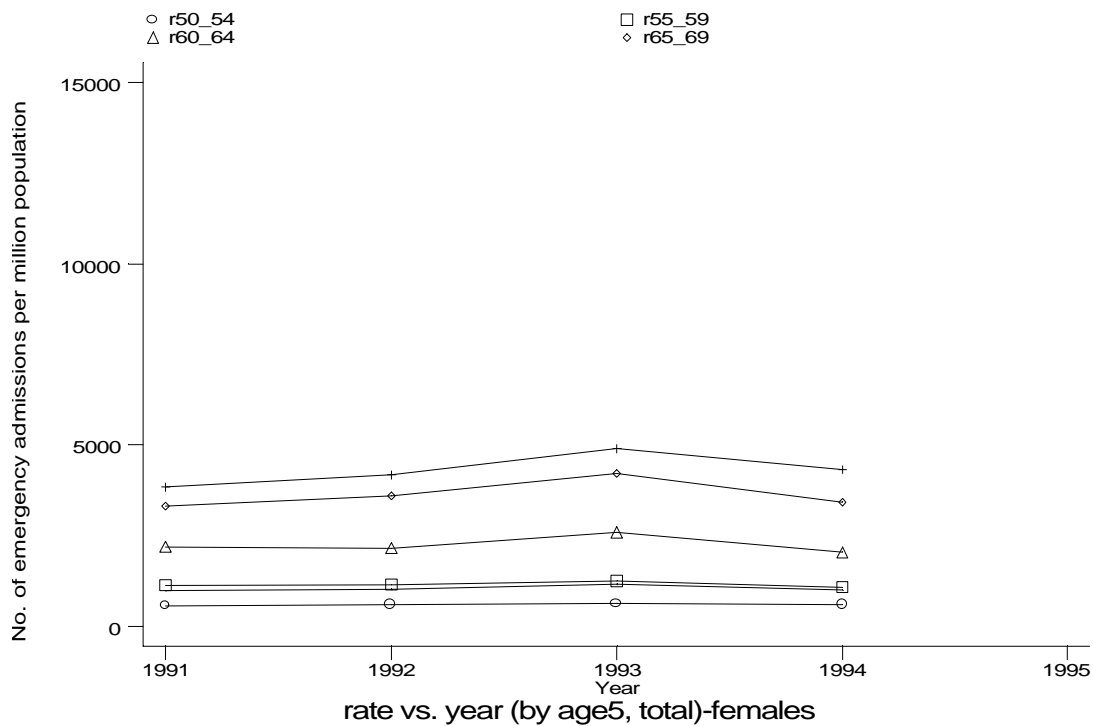
h1e2g1f.gph: FEMALES
2. COPD or similar (not asthma)



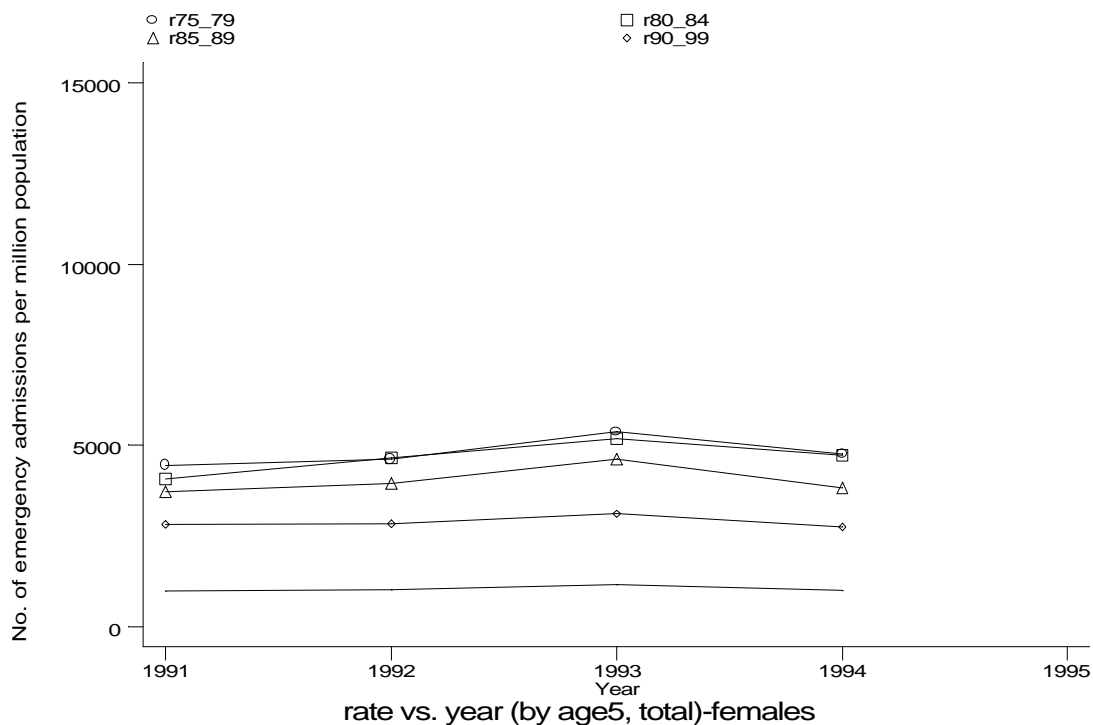
h1e2g2f.gph: FEMALES
2. COPD or similar (not asthma)

Age-sex distributions, yearly trends and cohort analysis (crude rates)

- HES Emergency admissions, England 1991-94



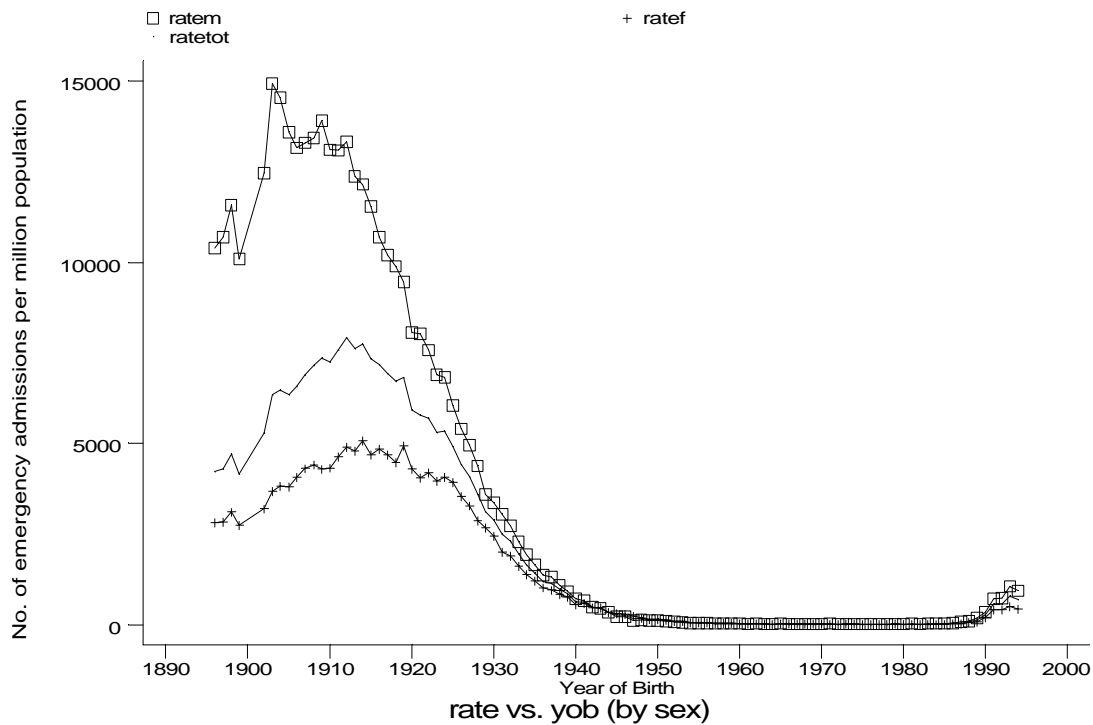
h1e2g3f.gph: FEMALES
2. COPD or similar (not asthma)



h1e2g4f.gph: FEMALES
2. COPD or similar (not asthma)

Age-sex distributions, yearly trends and cohort analysis (crude rates)

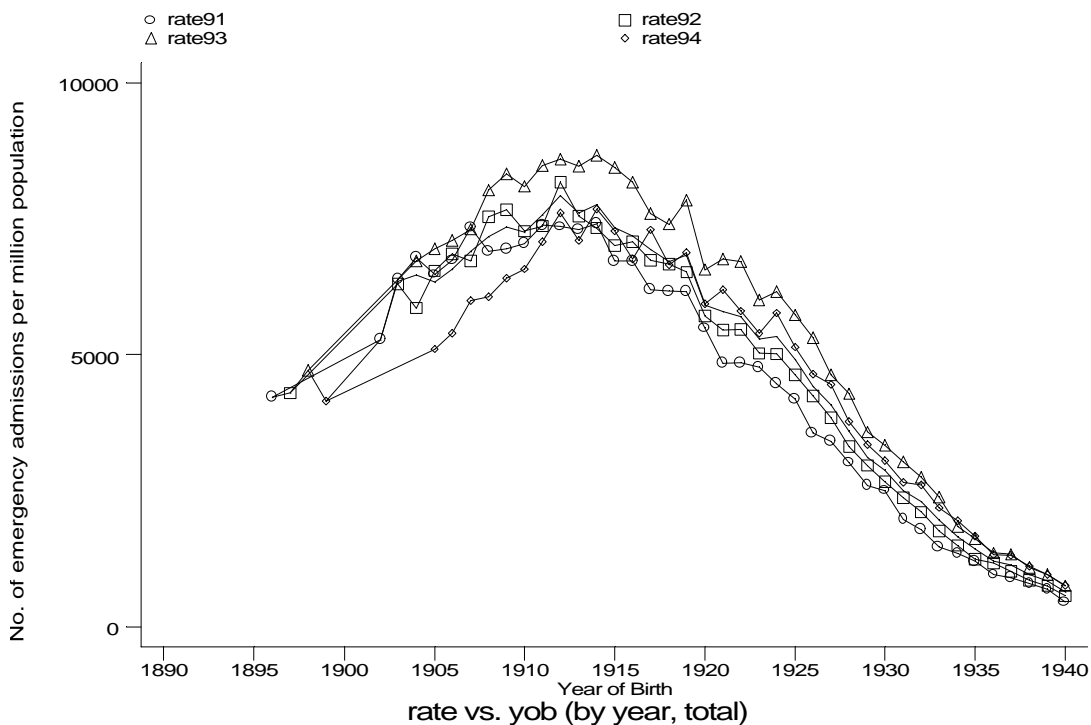
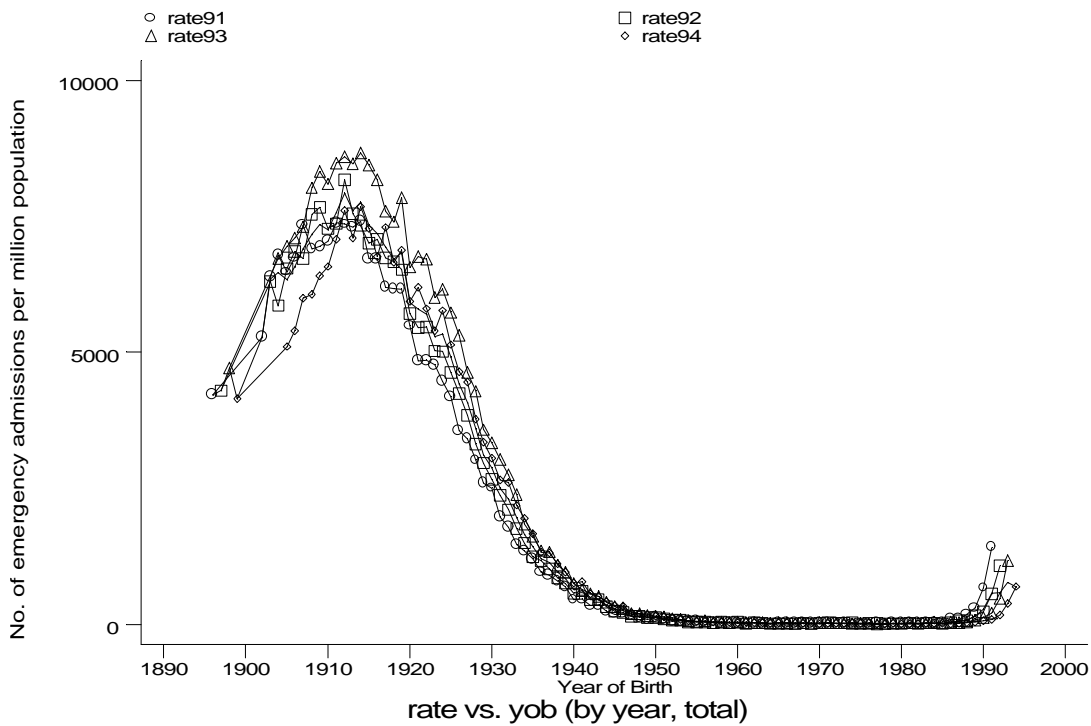
- HES Emergency admissions, England 1991-94



h1e2h.gph
2. COPD or similar (not asthma)

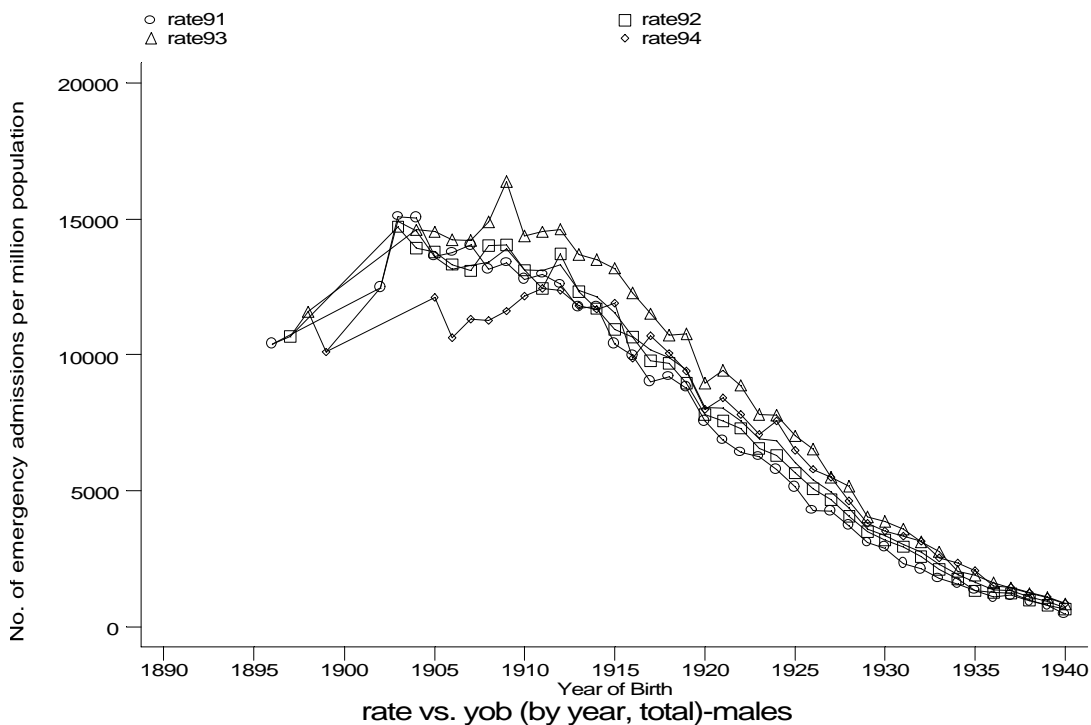
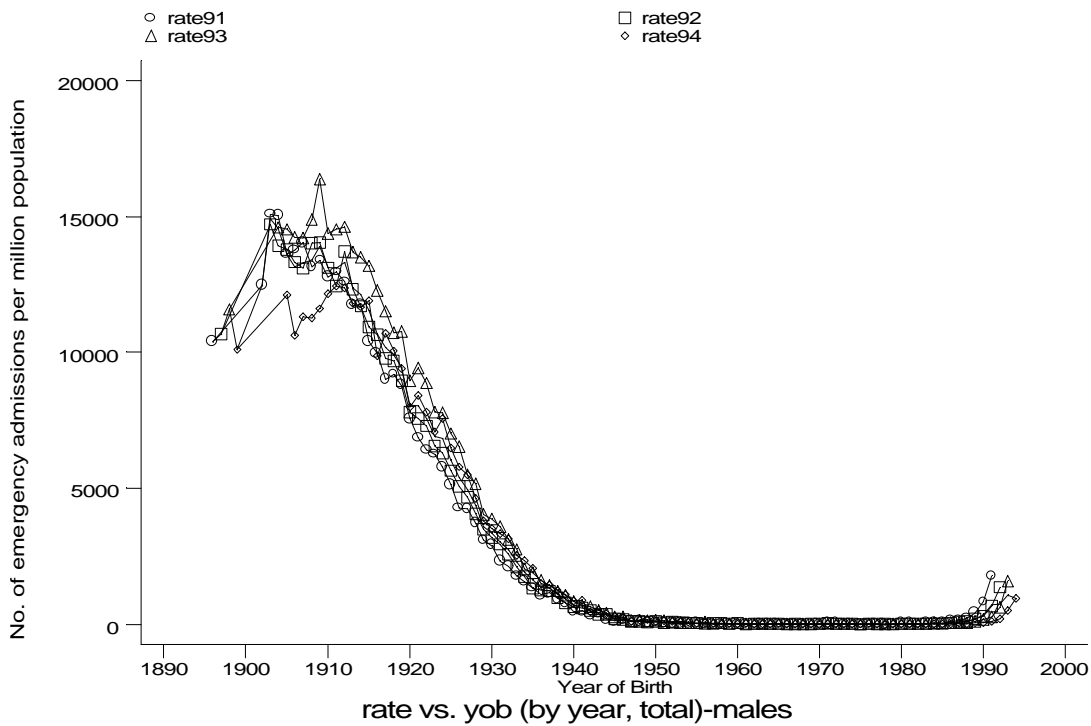
Age-sex distributions, yearly trends and cohort analysis (crude rates)

- HES Emergency admissions, England 1991-94



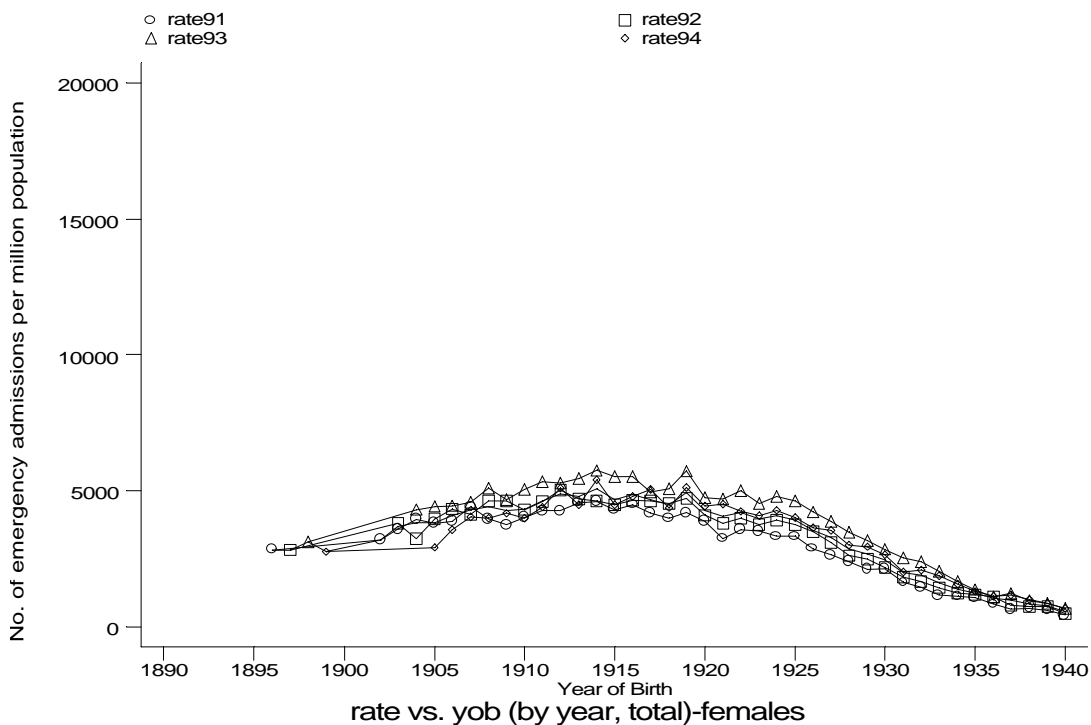
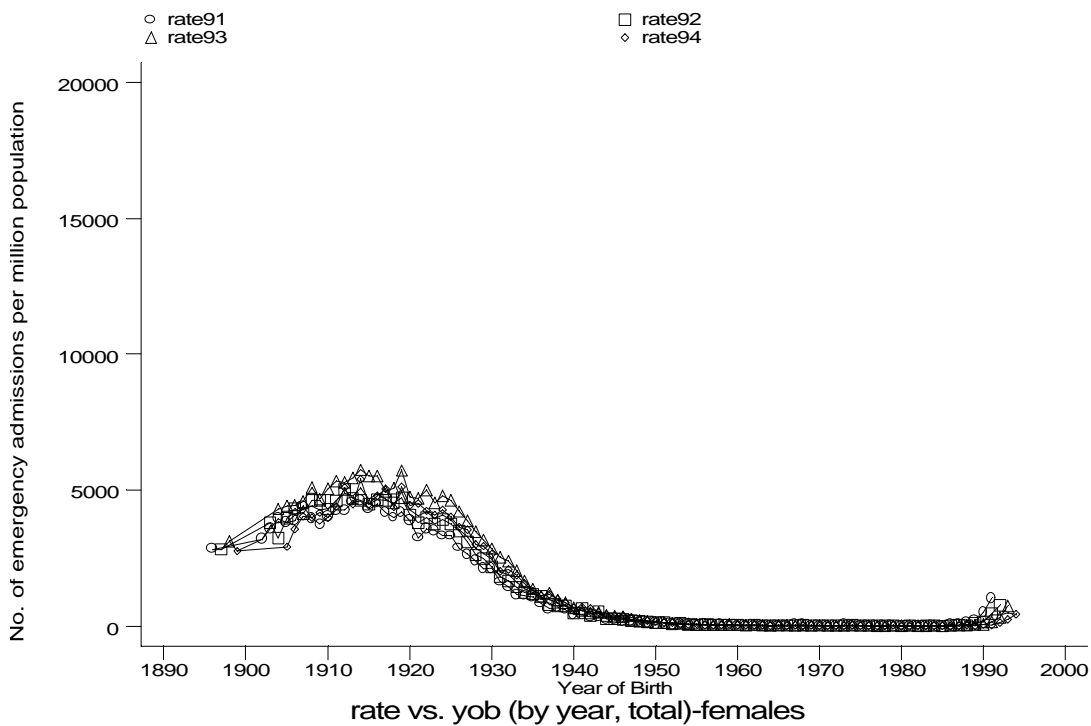
Age-sex distributions, yearly trends and cohort analysis (crude rates)

- HES Emergency admissions, England 1991-94



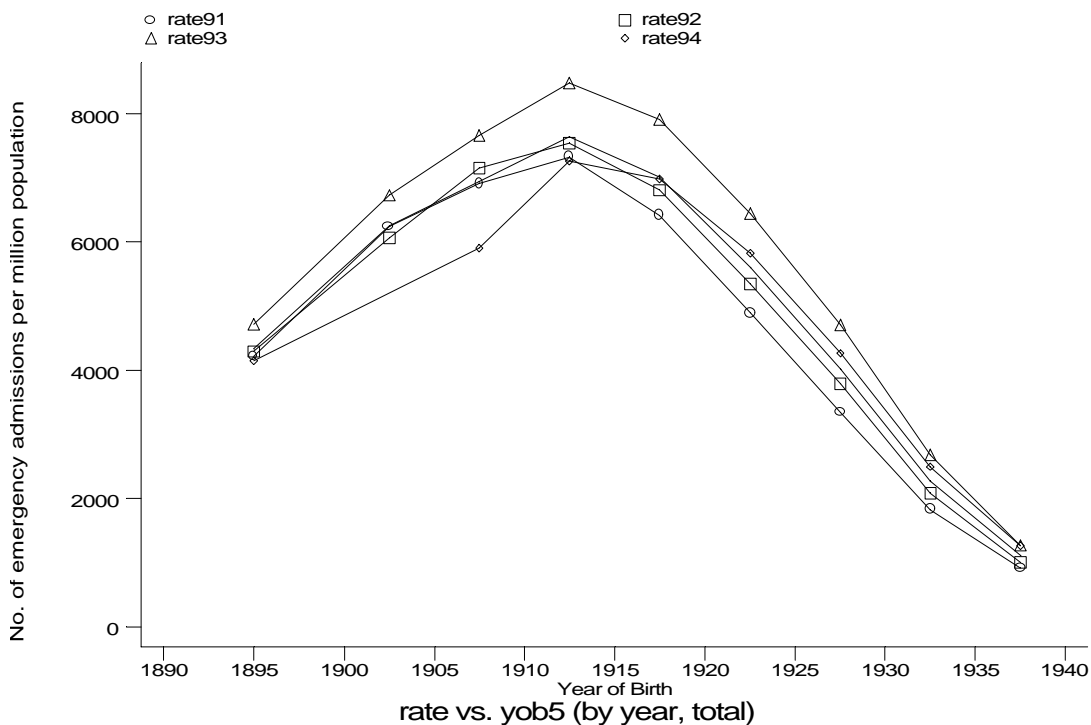
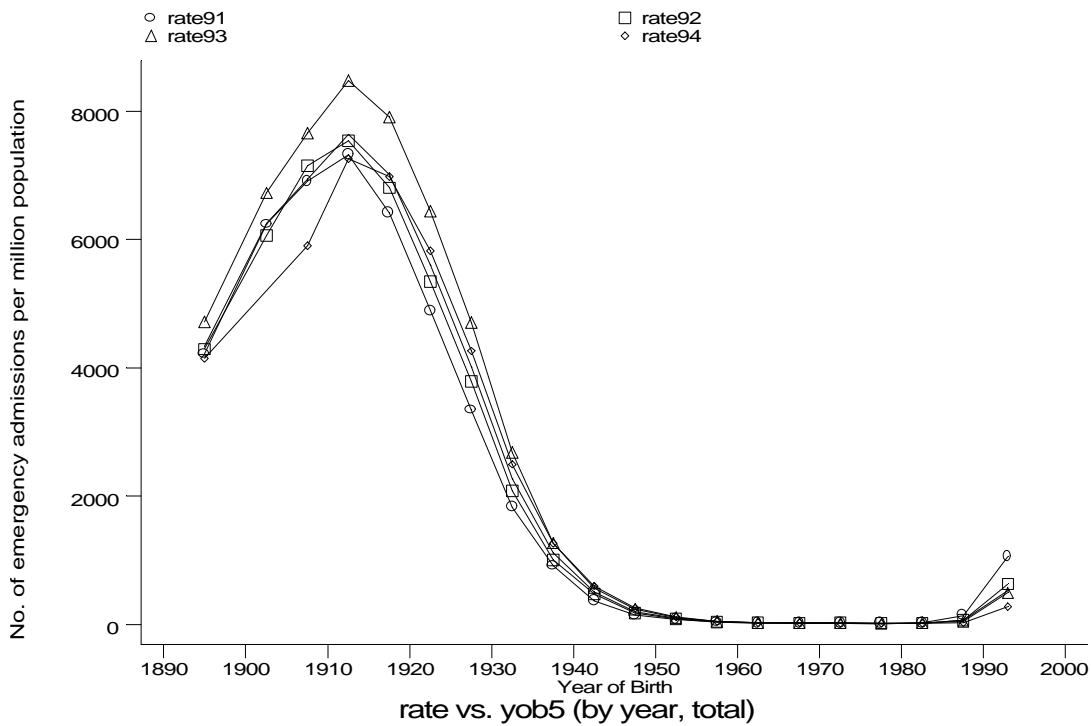
Age-sex distributions, yearly trends and cohort analysis (crude rates)

- HES Emergency admissions, England 1991-94



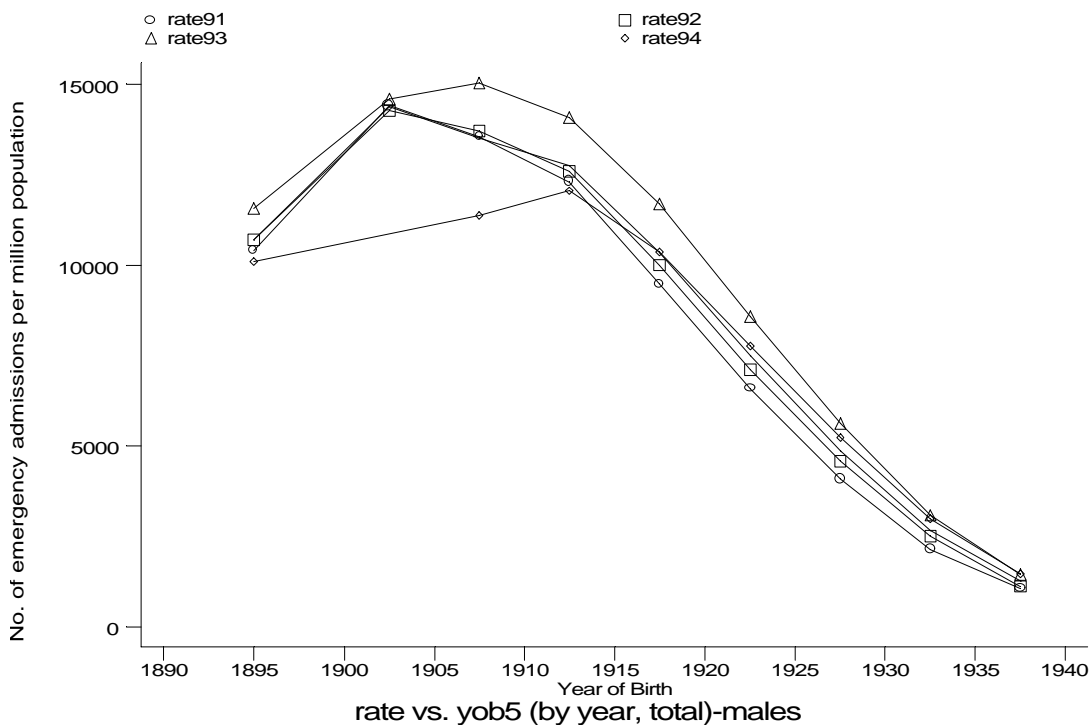
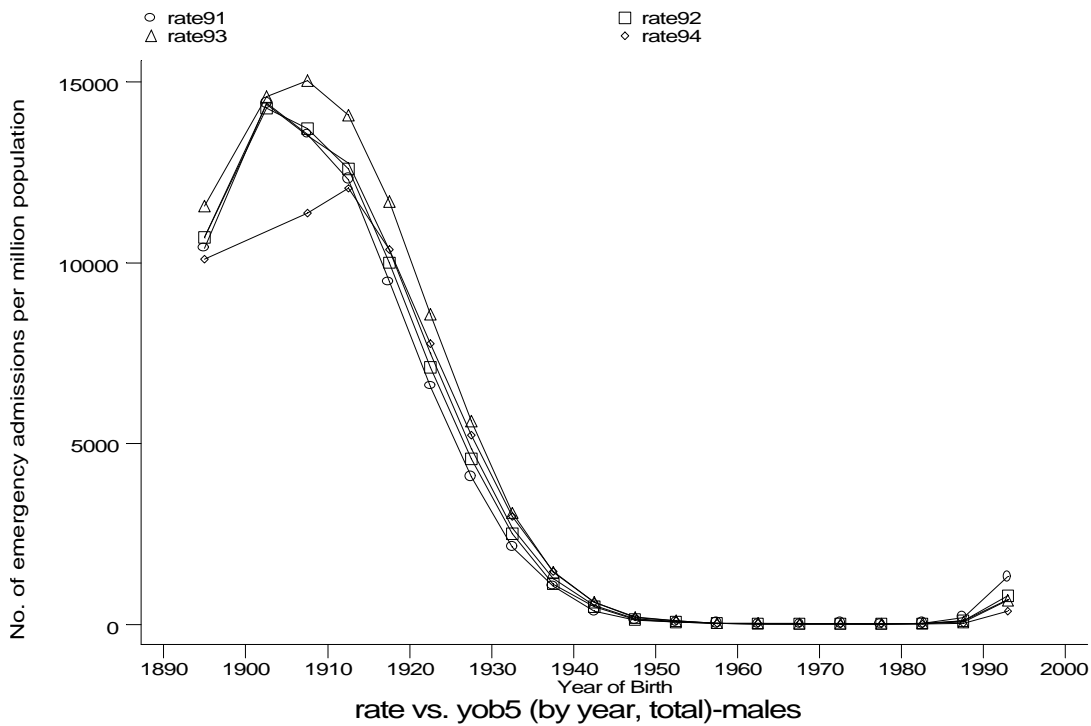
Age-sex distributions, yearly trends and cohort analysis (crude rates)

- HES Emergency admissions, England 1991-94



Age-sex distributions, yearly trends and cohort analysis (crude rates)

- HES Emergency admissions, England 1991-94



Age-sex distributions, yearly trends and cohort analysis (crude rates)

- HES Emergency admissions, England 1991-94

