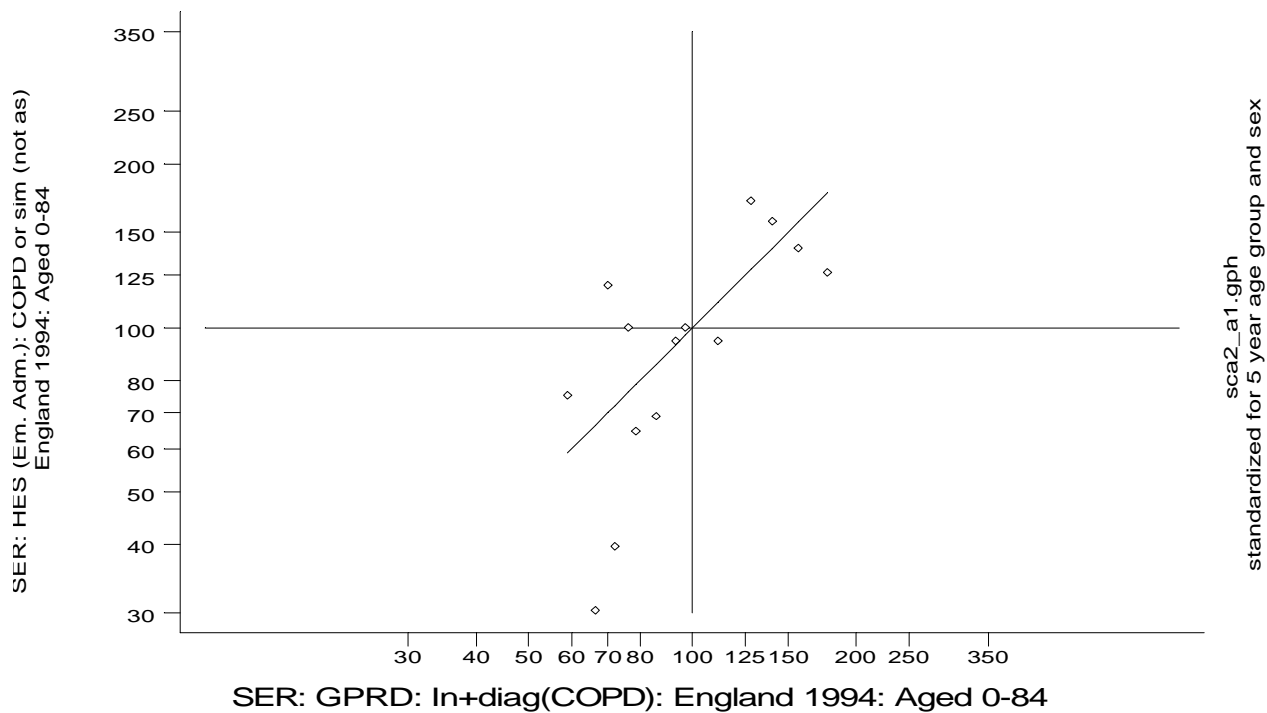


A7 COPD standard output graphs

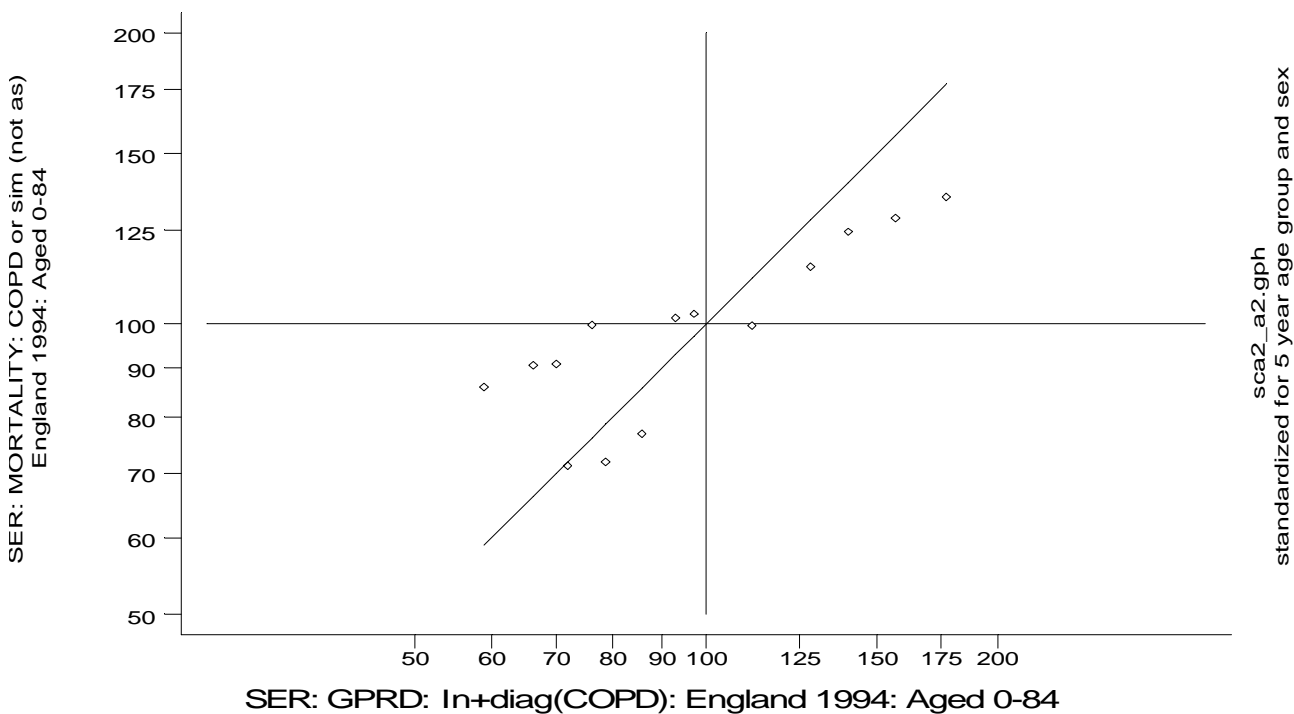
Scatterplots and correlation coefficients (standardised event ratios standardised for age and sex)

- regional comparisons between HSE95, GPRD, HES and Mortality, England 1994, ages 0-84

“HES vs. GPRD”



“MORTALITY vs. GPRD”

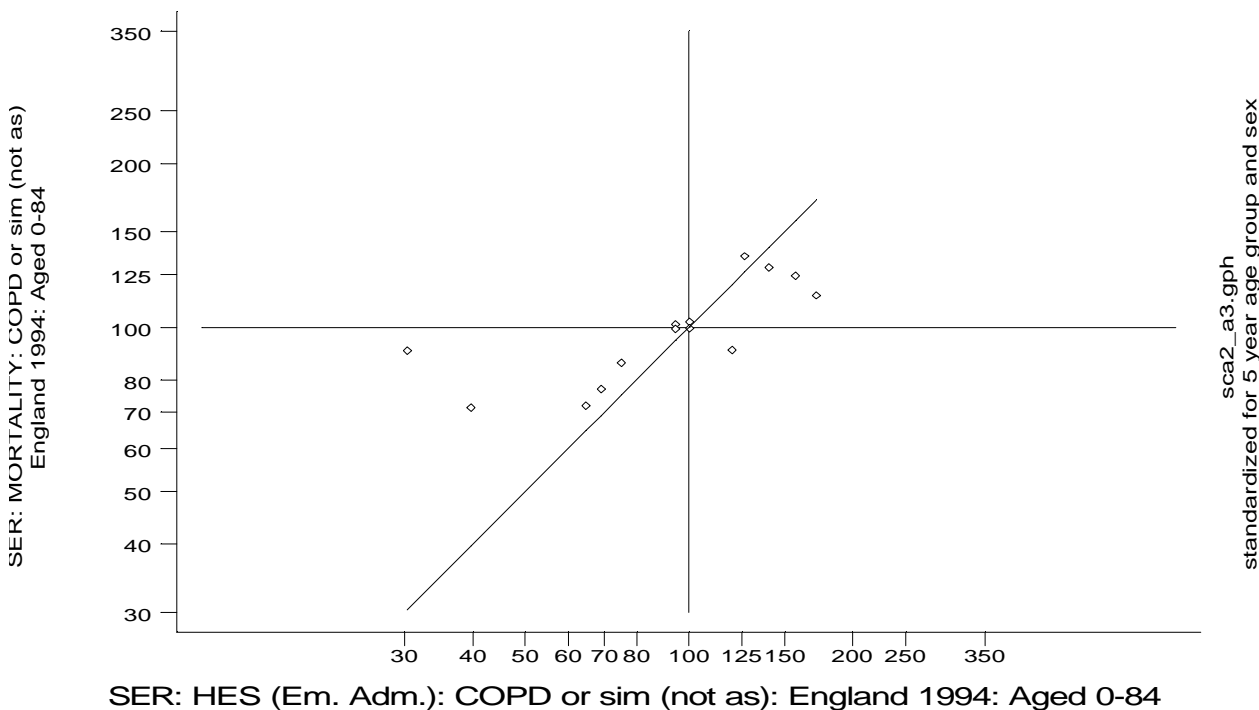


A7 COPD standard output graphs

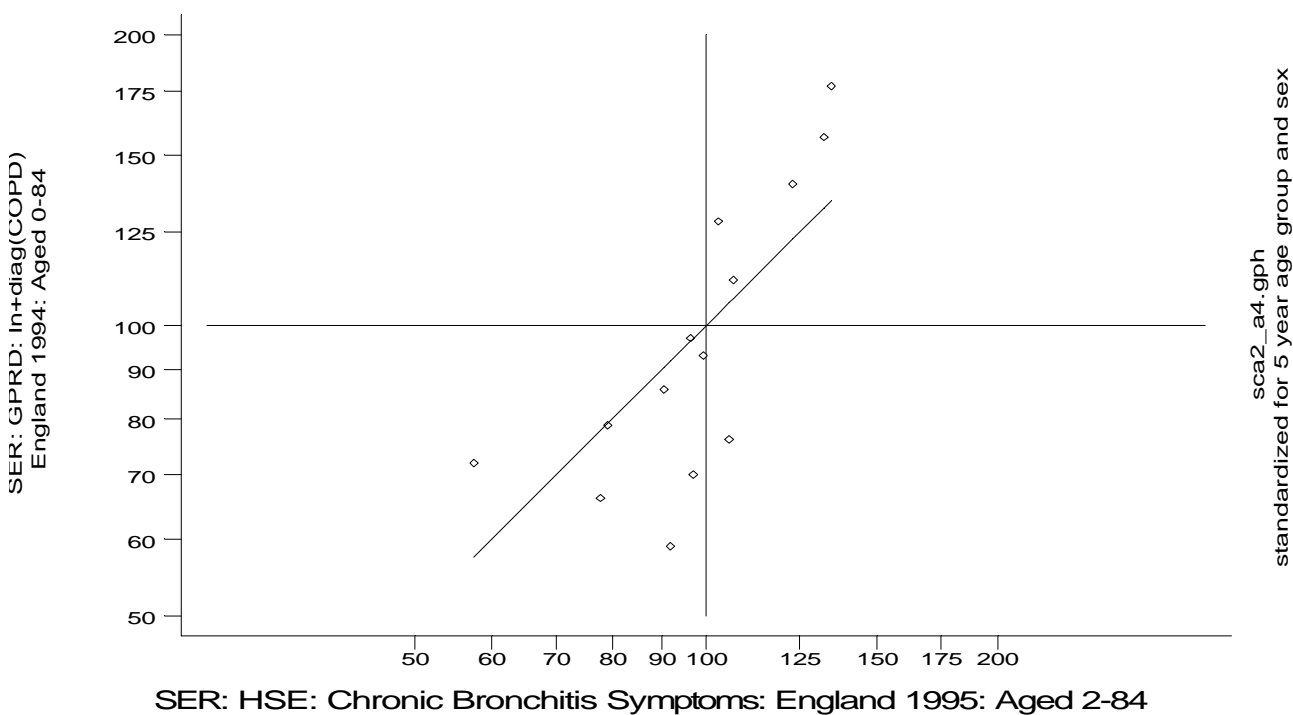
Scatterplots and correlation coefficients (standardised event ratios standardised for age and sex)

- regional comparisons between HSE95, GPRD, HES and Mortality, England 1994, ages 0-84

“MORTALITY vs. HES”



“GPRD vs. HSE”

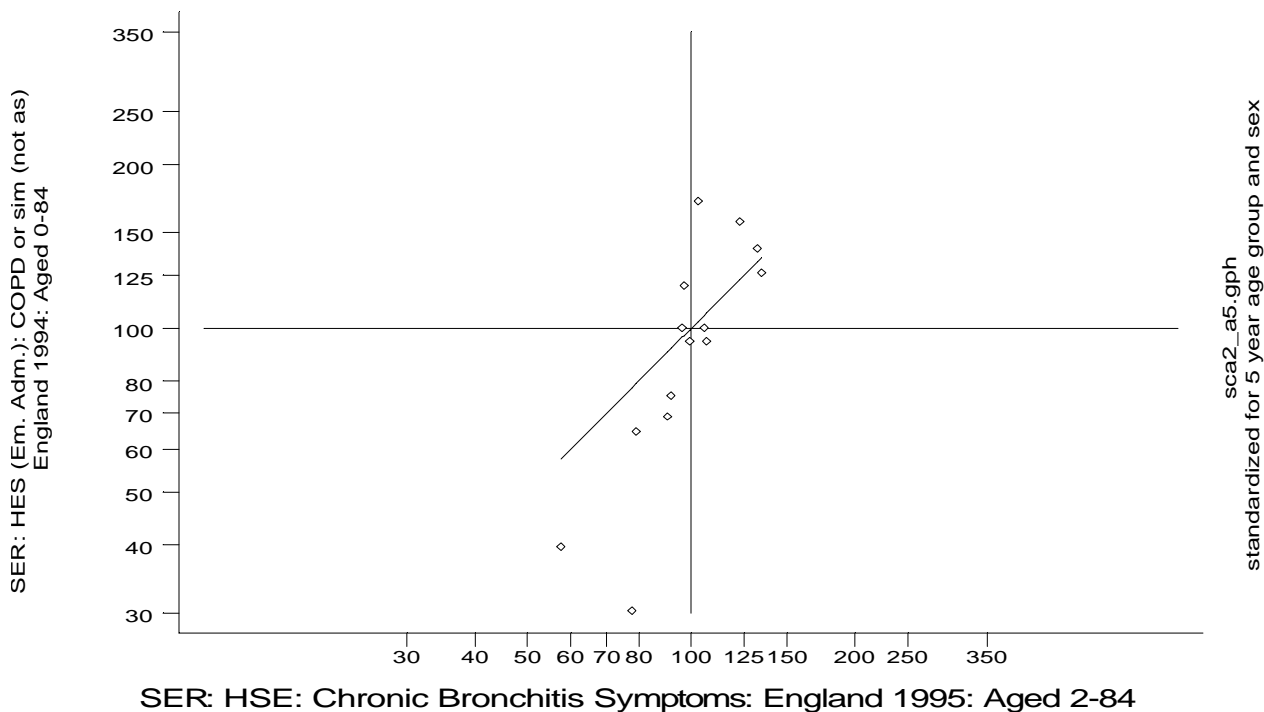


A7 COPD standard output graphs

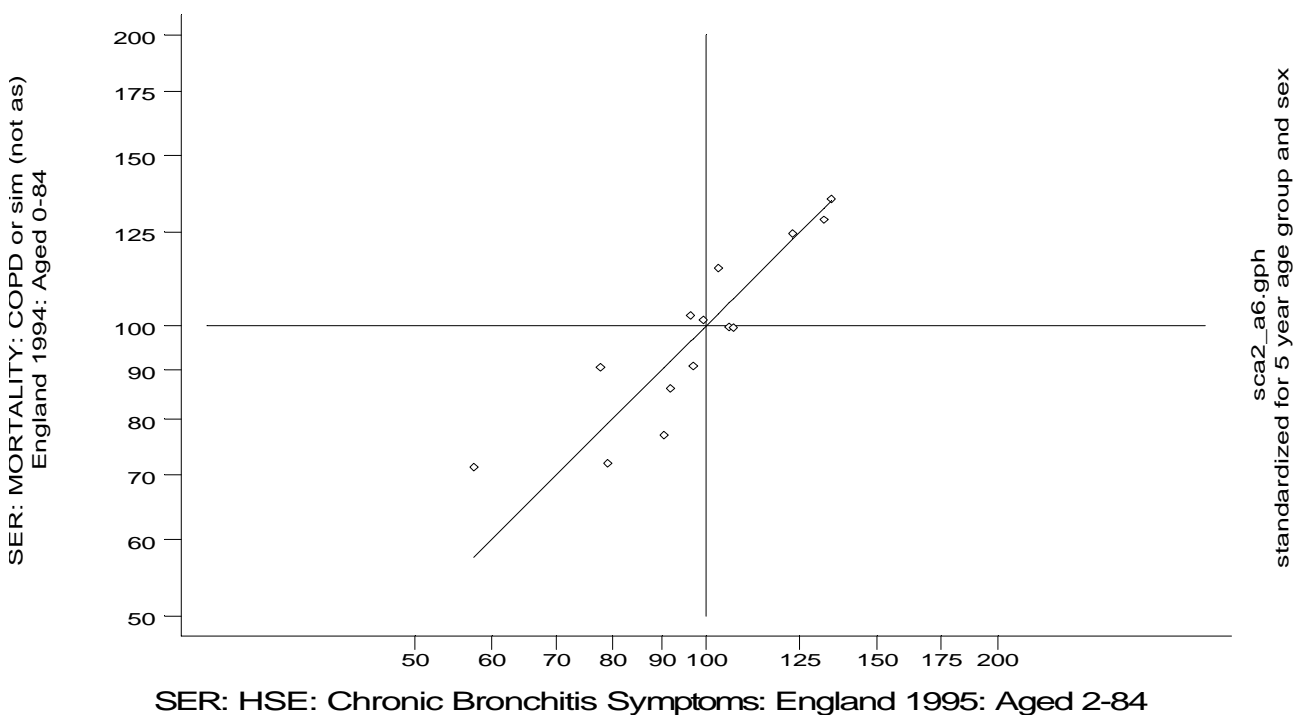
Scatterplots and correlation coefficients (standardised event ratios standardised for age and sex)

- regional comparisons between HSE95, GPRD, HES and Mortality, England 1994, ages 0-84

“HES vs. HSE”



“MORTALITY vs. HSE”



A7 COPD standard output graphs**Scatterplots and correlation coefficients (standardised event ratios standardised for age and sex)**

- regional comparisons between HSE95, GPRD, HES and Mortality, England 1994, ages 0-84

COPD: Spearman Rank Correlation Coefficients

	HSE95	MORTALITY	HES	GPRD
HSE95		0.88	0.84	0.78
MORTALITY	0.88		0.85	0.81
HES	0.84	0.85		0.70
GPRD	0.78	0.81	0.70	

a1: HES (0-84) vs. GPRD (0-84)
 Number of obs = 14
 Spearman's rho = 0.6967
 Test of Ho: hsl_2 and gsc1_4 independent
 Pr > |t| = 0.0056

a2: MORTALITY (0-84) vs. GPRD (0-84)
 Number of obs = 14
 Spearman's rho = 0.8066
 Test of Ho: msl_2 and gsc1_4 independent
 Pr > |t| = 0.0005

a3: MORTALITY (0-84) vs. HES (0-84)
 Number of obs = 14
 Spearman's rho = 0.8462
 Test of Ho: msl_2 and hsl_2 independent
 Pr > |t| = 0.0001

a4: GPRD (0-84) vs. HSE (2-84) {Chronic Bronchitis Symptoms}
 Number of obs = 14
 Spearman's rho = 0.7846
 Test of Ho: gsc1_4 and ssl_5 independent
 Pr > |t| = 0.0009

a5: HES (0-84) vs. HSE (2-84) {Chronic Bronchitis Symptoms}
 Number of obs = 14
 Spearman's rho = 0.8418
 Test of Ho: hsl_2 and ssl_5 independent
 Pr > |t| = 0.0002

a6: MORT (0-84) vs. HSE (2-84) {Chronic Bronchitis Symptoms}
 Number of obs = 14
 Spearman's rho = 0.8813
 Test of Ho: msl_2 and ssl_5 independent
 Pr > |t| = 0.0000

A7 COPD standard output graphs

Scatterplots and correlation coefficients (standardised event ratios standardised for age and sex)

- regional comparisons between HSE95, GPRD, HES and Mortality, England 1994, ages 0-84

Observed Number of COPD Events,
England 1994: Aged 0-84 (HSE: England 1995: Aged 2-84)

rha	gocl_4	hol_2	mol_2	sol_5
Northern	2058	4526	1409	102
Yorkshir	814	6898	1597	97
Trent	1453	5324	1883	123
E Anglia	926	1180	745	42
NW Thame	938	3483	910	65
NE Thame	392	3653	1330	93
SE Thame	350	4172	1468	87
SW Thame	873	2494	1012	72
Wessex	836	2547	1012	72
Oxford	315	746	757	51
S Wester	1027	2668	1062	75
W Midlan	2430	5412	1990	132
Mersey	1492	4094	1110	73
N Wester	2049	5701	2103	138

Denominator for COPD Events,
England 1994: Aged 0-84 (HSE: England 1995: Aged 2-84)

rha	gdc1_4	hd1_2	md1_2	sd1_5
Northern	104729.2	2881981	2881981	1258
Yorkshir	52152.7	3654624	3654624	1527
Trent	120996.0	4701828	4701828	2020
E Anglia	113740.5	2600991	2600991	1152
NW Thame	116975.6	2953265	2953265	1074
NE Thame	31761.7	3766006	3766006	1434
SE Thame	33977.9	3654042	3654042	1326
SW Thame	117694.8	2950819	2950819	1235
Wessex	73779.6	3110430	3110430	1232
Oxford	45680.5	2574069	2574069	1091
S Wester	96438.4	3277999	3277999	1466
W Midlan	229739.0	5213324	5213324	2112
Mersey	87252.9	2369834	2369834	929
N Wester	102013.9	4133922	4133922	1660

Crude Rate of COPD Events,
England 1994: Aged 0-84 (HSE: England 1995: Aged 2-84)

rha	grcl_4	hrl_2	mrl_2	srl_5
Northern	19.7	1570.4	488.9	8.1
Yorkshir	15.6	1887.5	437.0	6.4
Trent	12.0	1132.3	400.5	6.1
E Anglia	8.1	453.7	286.4	3.6
NW Thame	8.0	1179.4	308.1	6.1
NE Thame	12.3	970.0	353.2	6.5
SE Thame	10.3	1141.7	401.7	6.6
SW Thame	7.4	845.2	343.0	5.8
Wessex	11.3	818.9	325.4	5.8
Oxford	6.9	289.8	294.1	4.7
S Wester	10.6	813.9	324.0	5.1
W Midlan	10.6	1038.1	381.7	6.2
Mersey	17.1	1727.5	468.4	7.9
N Wester	20.1	1379.1	508.7	8.3

Expected Number of COPD Events,
England 1994: Aged 0-84 (HSE: England 1995: Aged 2-84)

rha	gecl_4	hel_2	mel_2	sel_5
Northern	1312.8	3222.3	1094.6	77.1
Yorkshir	635.3	4025.2	1392.7	94.3
Trent	1497.0	5310.7	1838.8	127.7
E Anglia	1287.4	2971.6	1044.5	73.0
NW Thame	1340.0	2906.1	1001.6	67.1
NE Thame	351.9	3863.8	1335.0	87.2
SE Thame	459.6	4155.8	1472.3	82.3
SW Thame	1480.5	3318.4	1175.5	78.4
Wessex	974.0	3695.4	1314.1	79.7
Oxford	475.4	2463.4	835.8	65.6
S Wester	1304.6	4128.5	1475.8	94.8
W Midlan	2613.2	5726.6	1962.7	133.0
Mersey	1064.4	2606.7	891.2	59.4
N Wester	1157.0	4503.4	1553.4	102.5

SER's for COPD Events, standardized for age5 and sex
England 1994: Aged 0-84 (HSE: England 1995: Aged 2-84)

rha	gscl_4	hs1_2	ms1_2	ss1_5
Northern	156.8	140.5	128.7	132.4
Yorkshir	128.1	171.4	114.7	102.8
Trent	97.1	100.3	102.4	96.3
E Anglia	71.9	39.7	71.3	57.5
NW Thame	70.0	119.9	90.9	96.9
NE Thame	111.4	94.5	99.6	106.7
SE Thame	76.2	100.4	99.7	105.6
SW Thame	59.0	75.2	86.1	91.9
Wessex	85.8	68.9	77.0	90.4
Oxford	66.3	30.3	90.6	77.8
S Wester	78.7	64.6	72.0	79.1
W Midlan	93.0	94.5	101.4	99.3
Mersey	140.2	157.1	124.5	122.9
N Wester	177.1	126.6	135.4	134.7