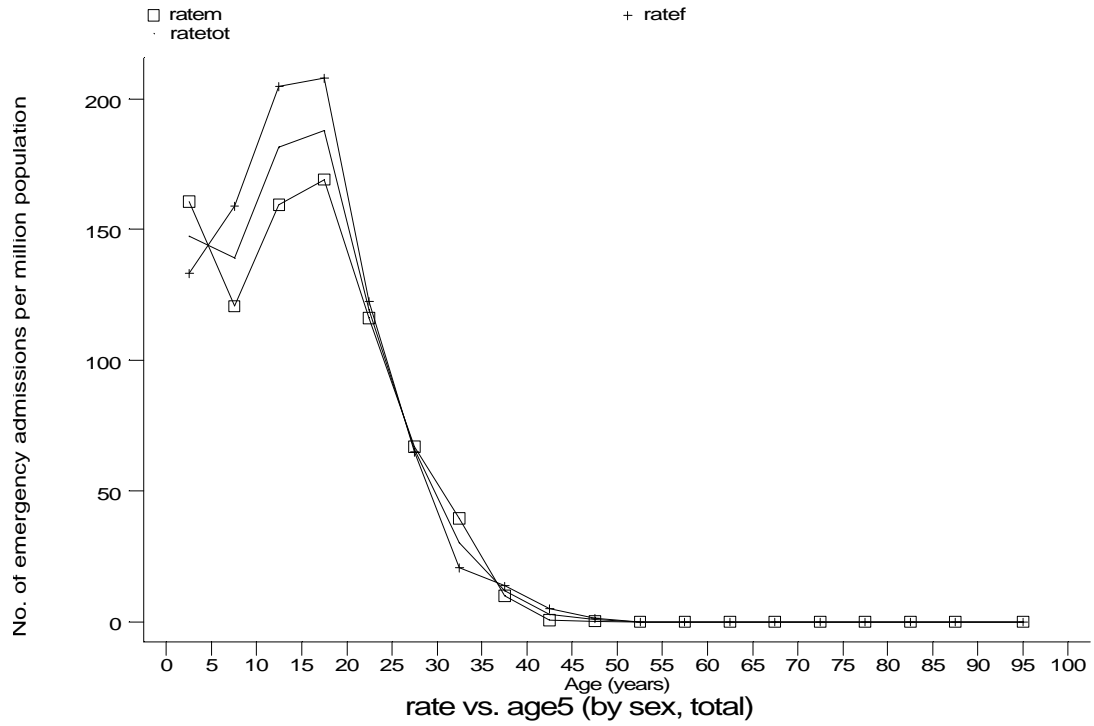
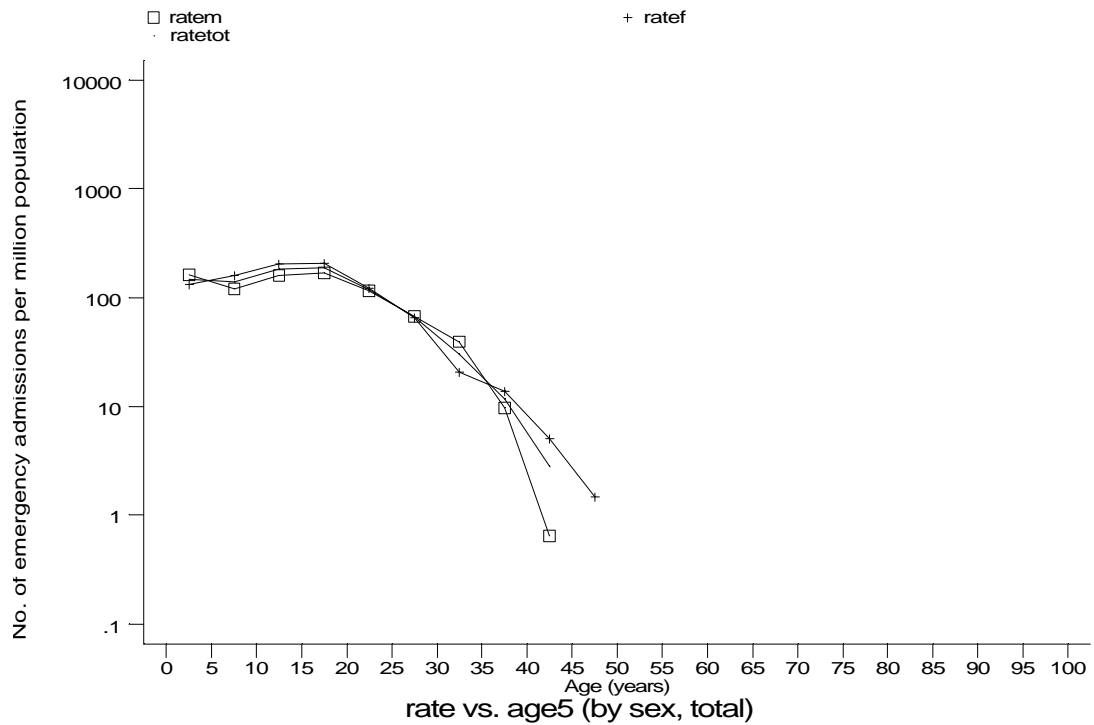


Age-sex distributions, yearly trends and cohort analysis (crude rates)

- HES Emergency admissions, England, April 1991-December 1994



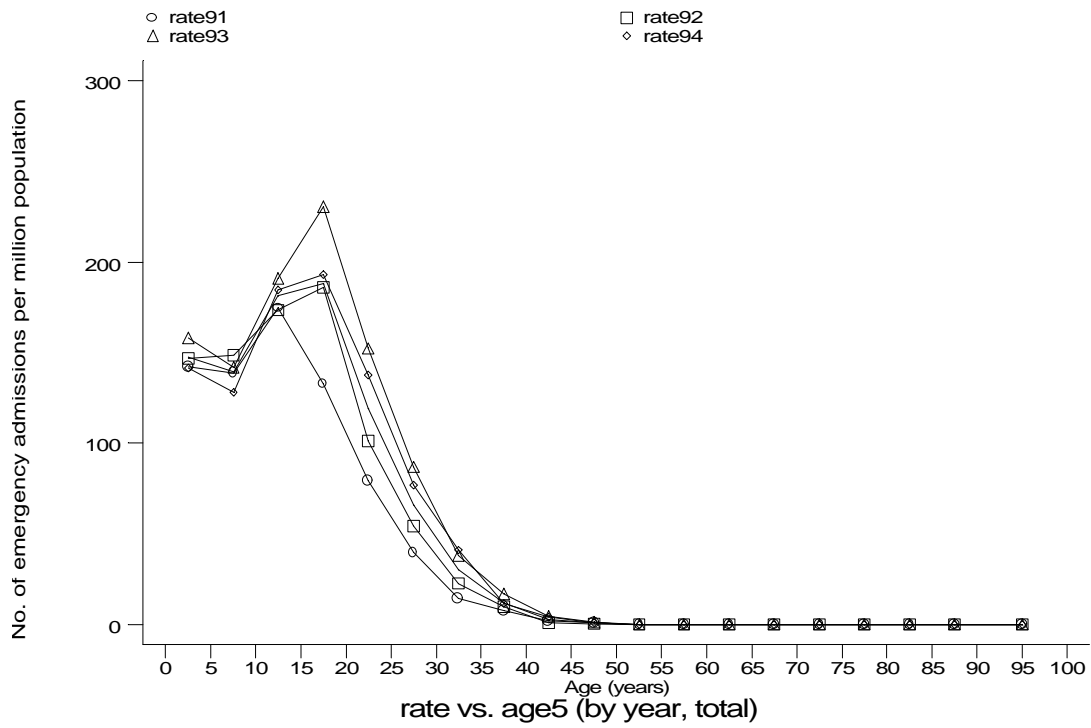
h1e7a1.gph
7. Cystic Fibrosis



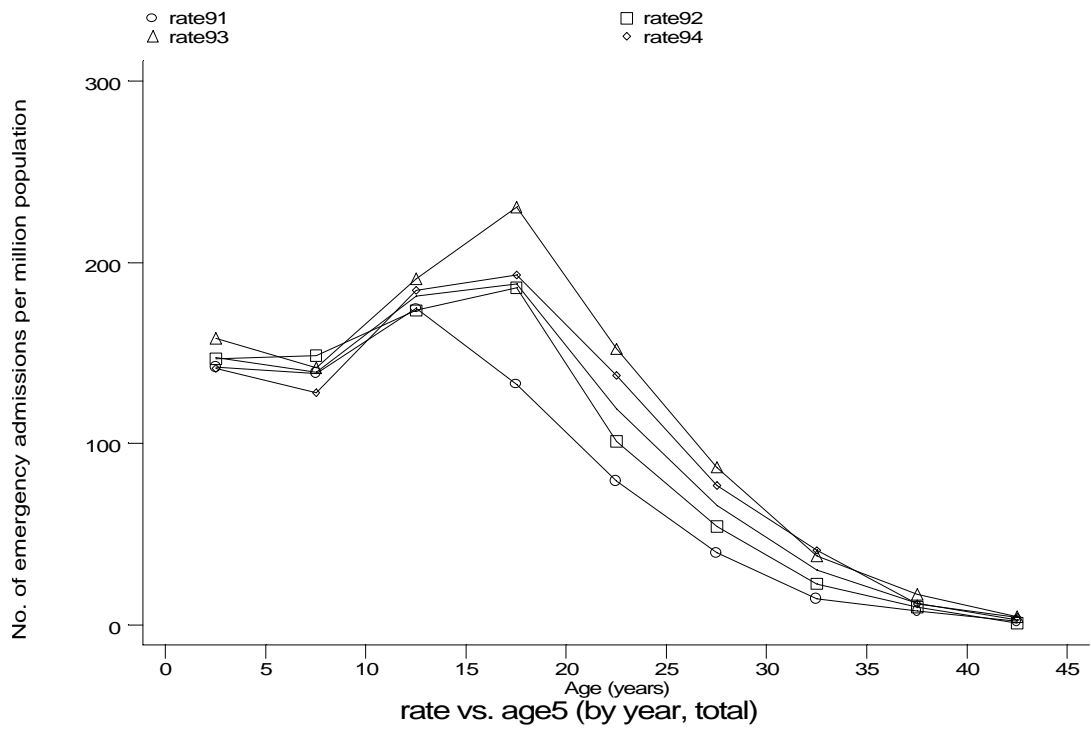
h1e7a2.gph
7. Cystic Fibrosis

Age-sex distributions, yearly trends and cohort analysis (crude rates)

- HES Emergency admissions, England, April 1991-December 1994



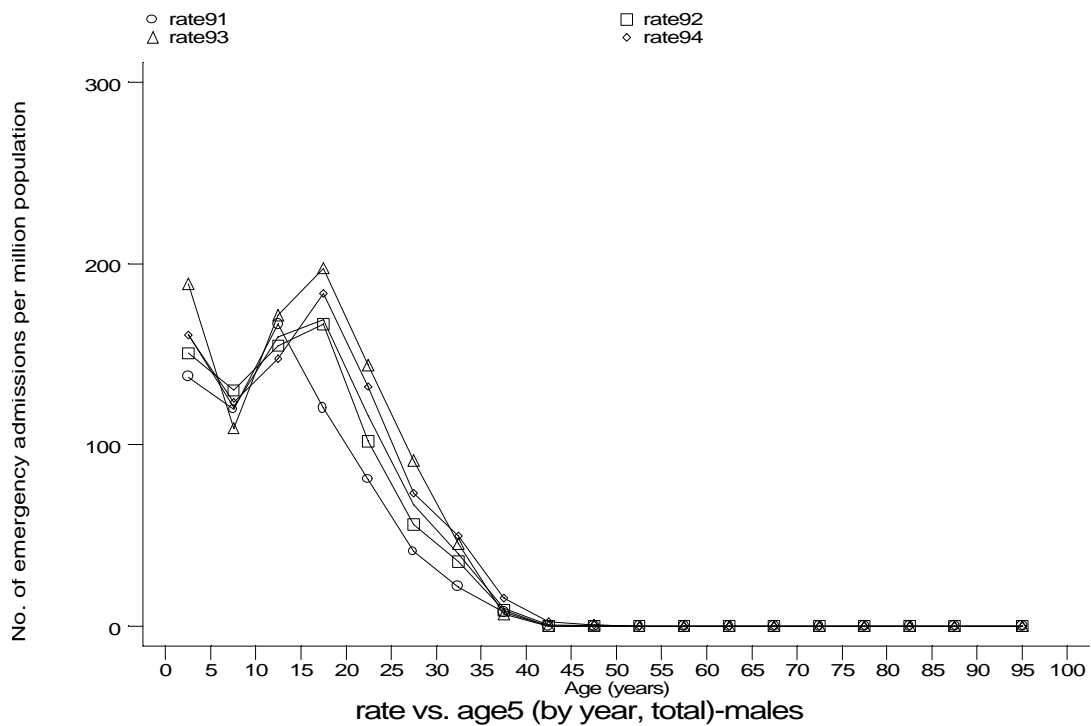
h1e7b1.gph
7. Cystic fibrosis



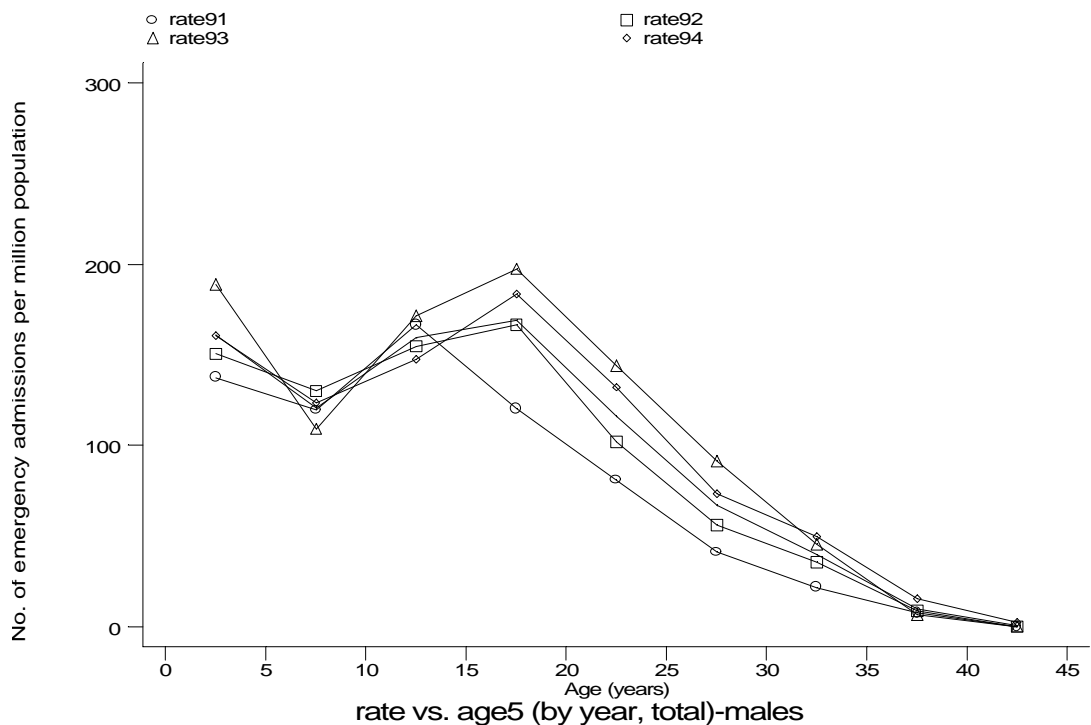
h1e7b2.gph
7. Cystic fibrosis

Age-sex distributions, yearly trends and cohort analysis (crude rates)

- HES Emergency admissions, England, April 1991-December 1994



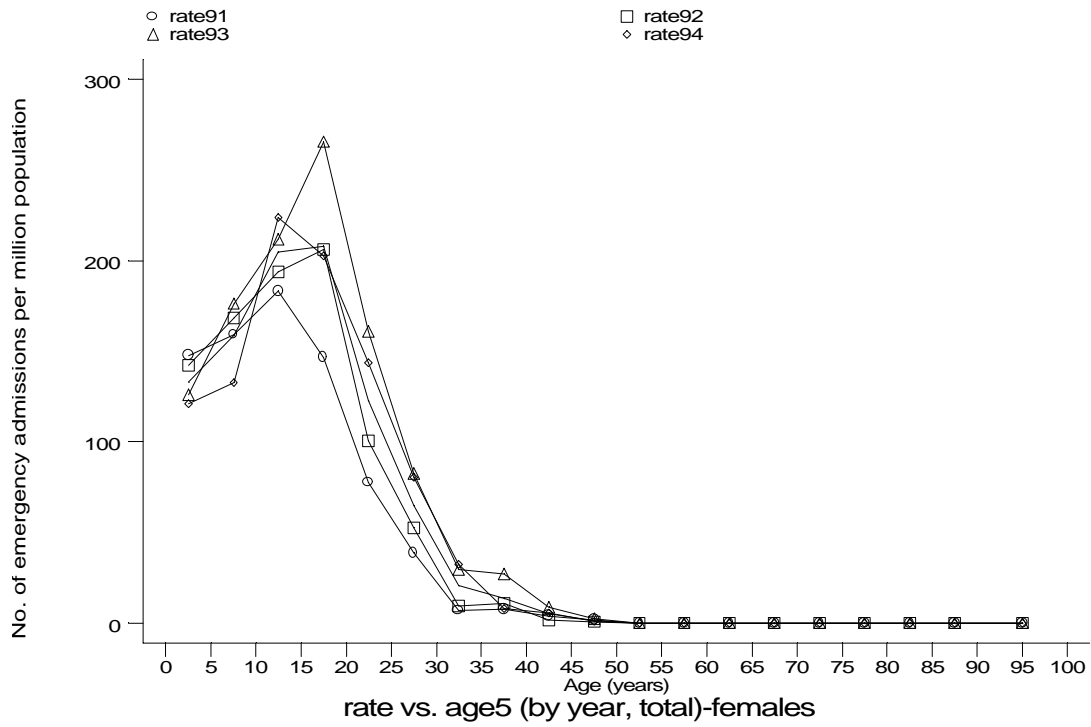
h1e7b1m.gph: MALES
7. Cystic fibrosis



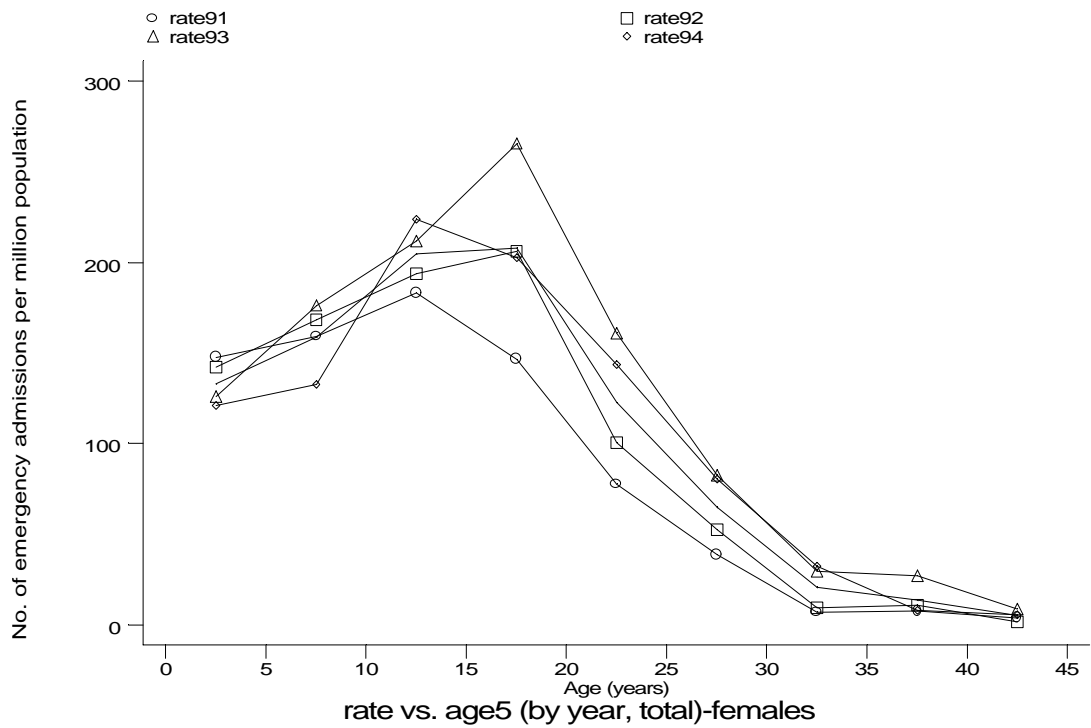
h1e7b2m.gph: MALES
7. Cystic fibrosis

Age-sex distributions, yearly trends and cohort analysis (crude rates)

- HES Emergency admissions, England, April 1991-December 1994



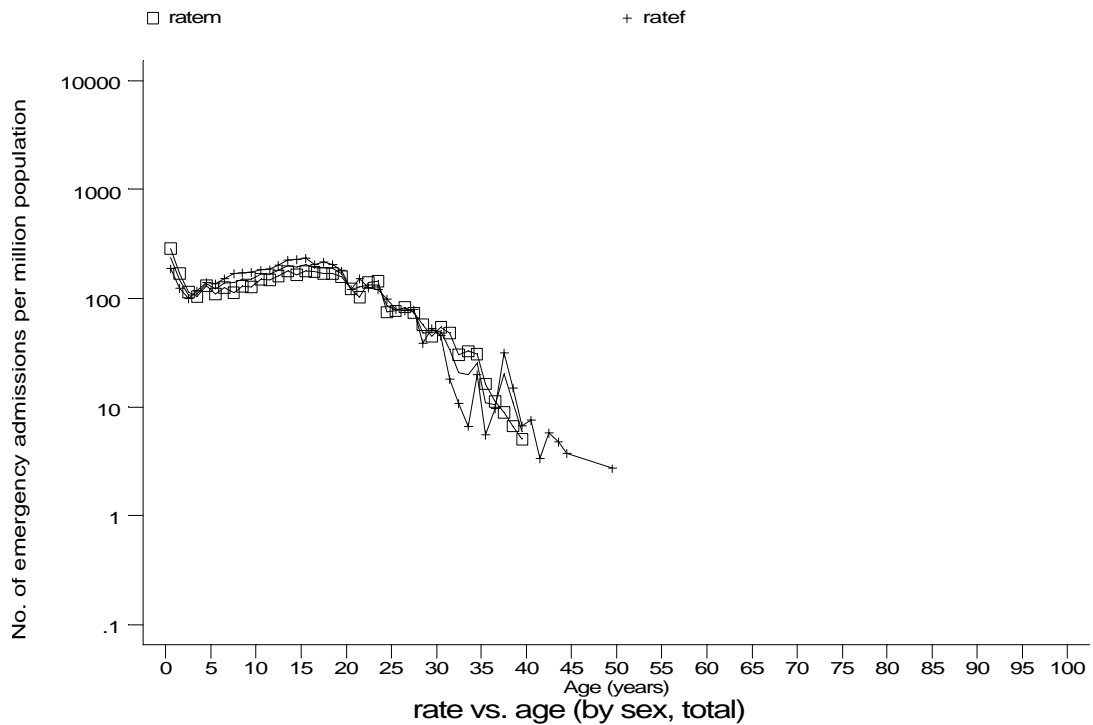
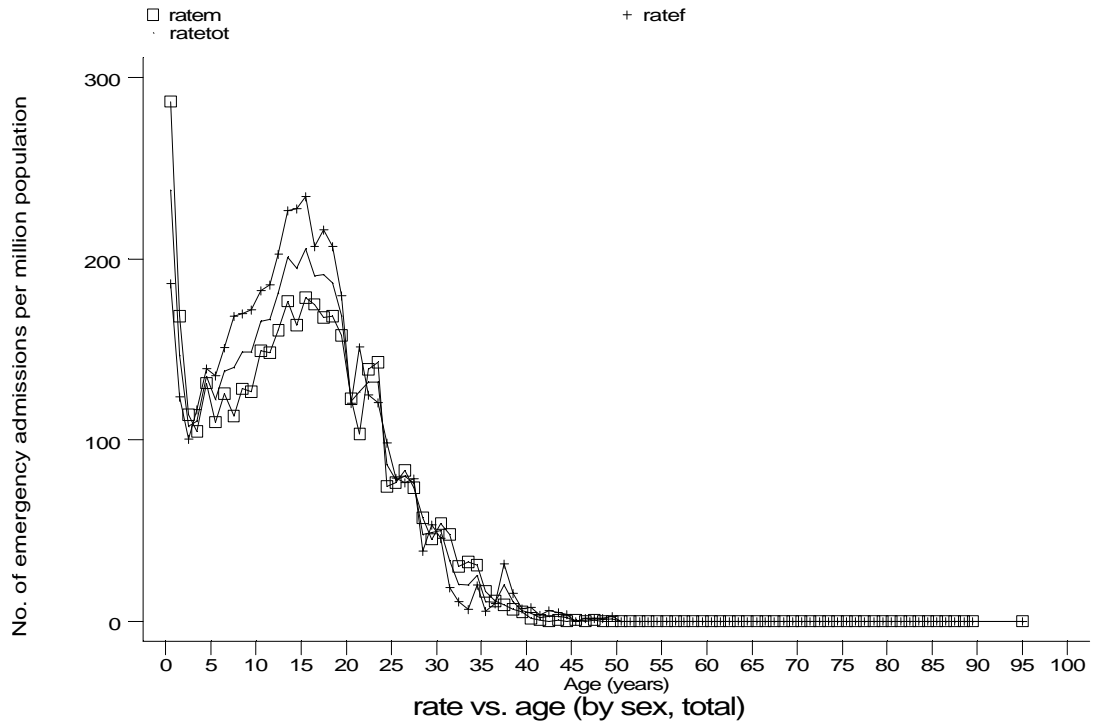
h1e7b1f.gph: FEMALES
7. Cystic fibrosis



h1e7b2f.gph: FEMALES
7. Cystic fibrosis

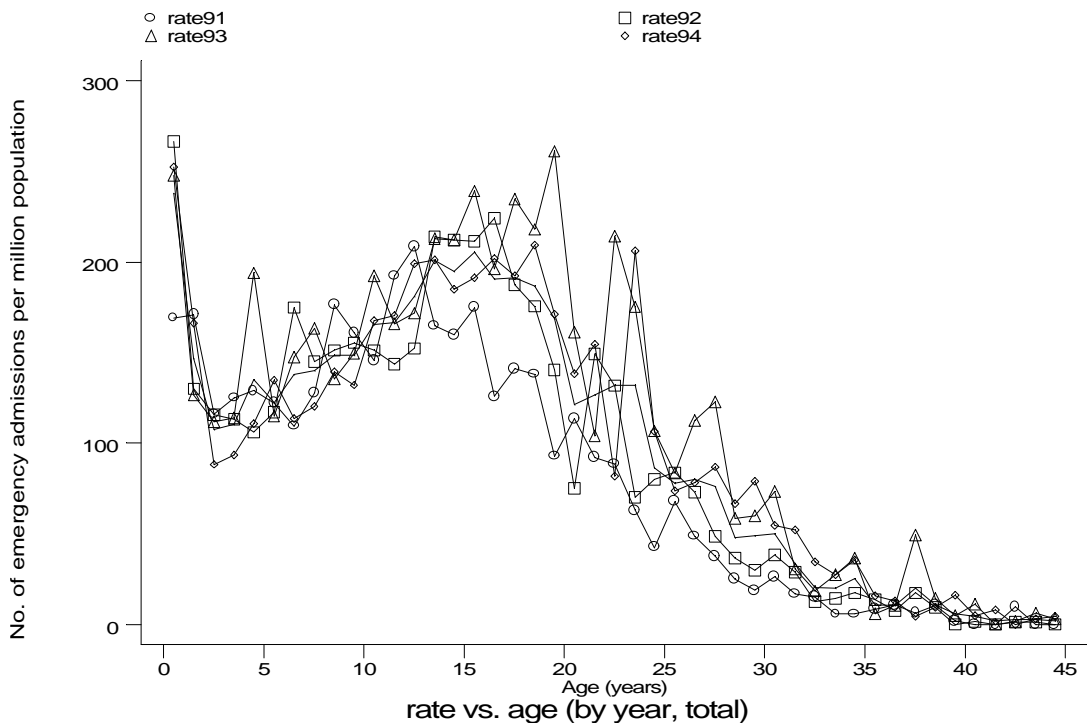
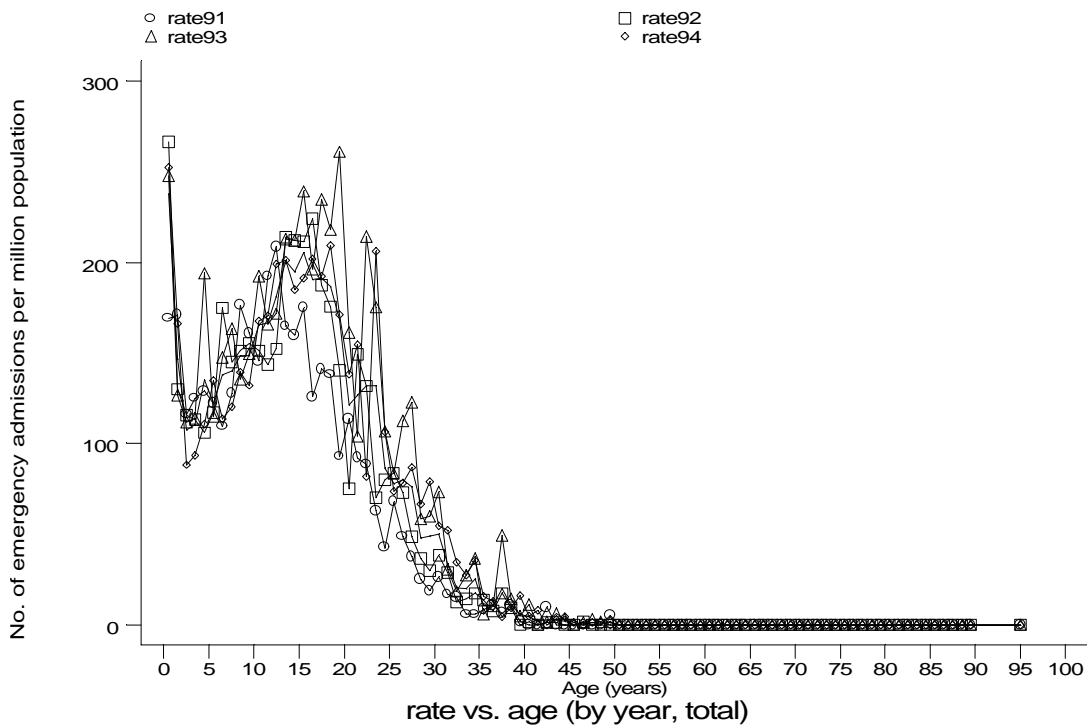
Age-sex distributions, yearly trends and cohort analysis (crude rates)

- HES Emergency admissions, England, April 1991-December 1994



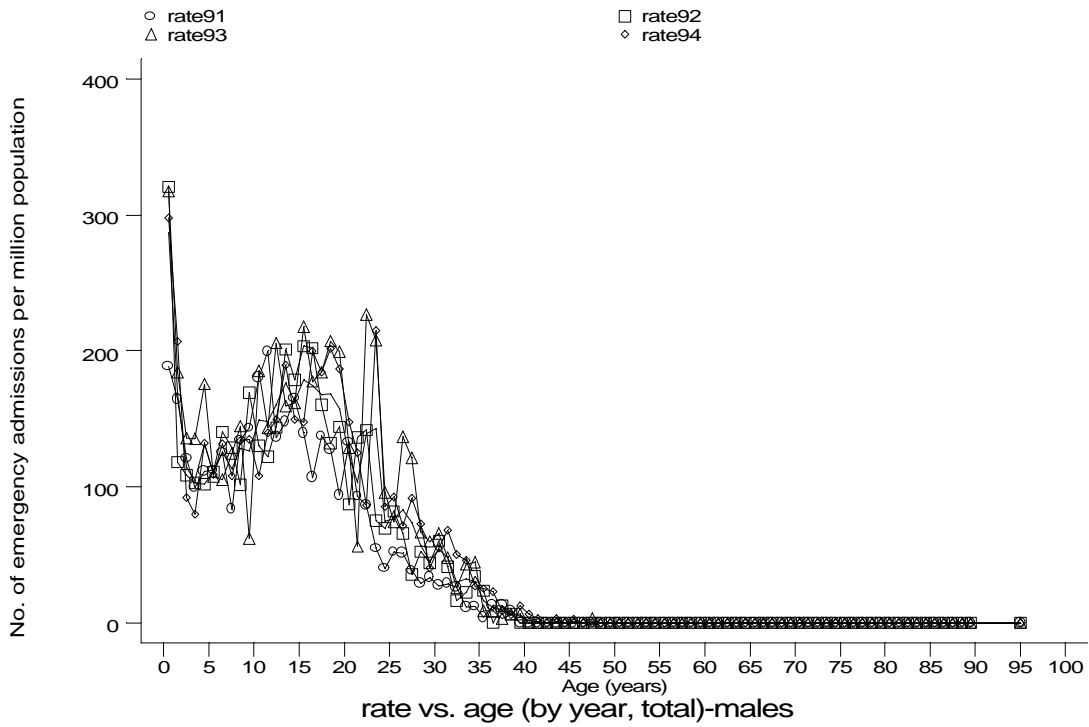
Age-sex distributions, yearly trends and cohort analysis (crude rates)

- HES Emergency admissions, England, April 1991-December 1994

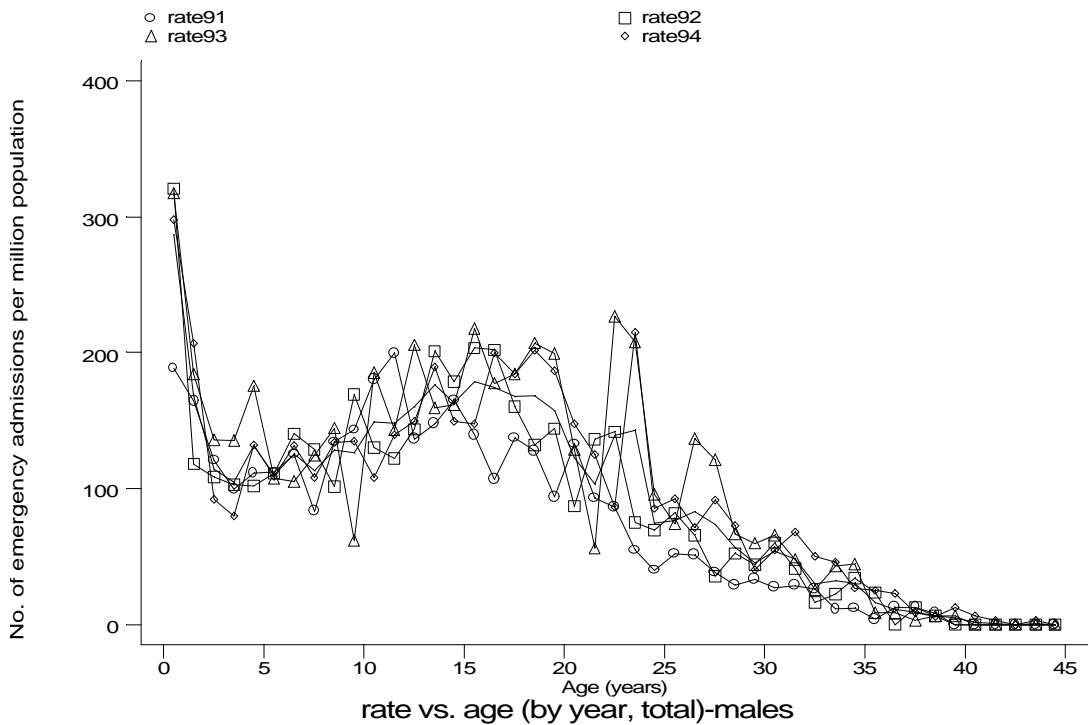


Age-sex distributions, yearly trends and cohort analysis (crude rates)

- HES Emergency admissions, England, April 1991-December 1994



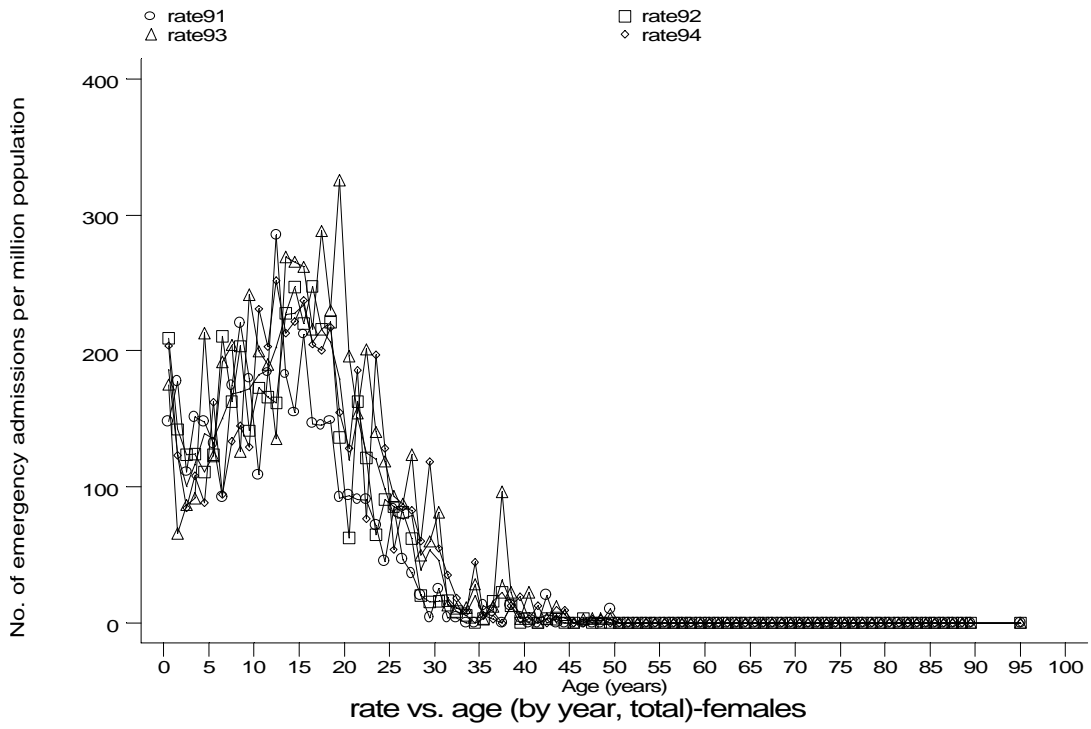
h1e7d1m.gph: MALES
7. Cystic fibrosis



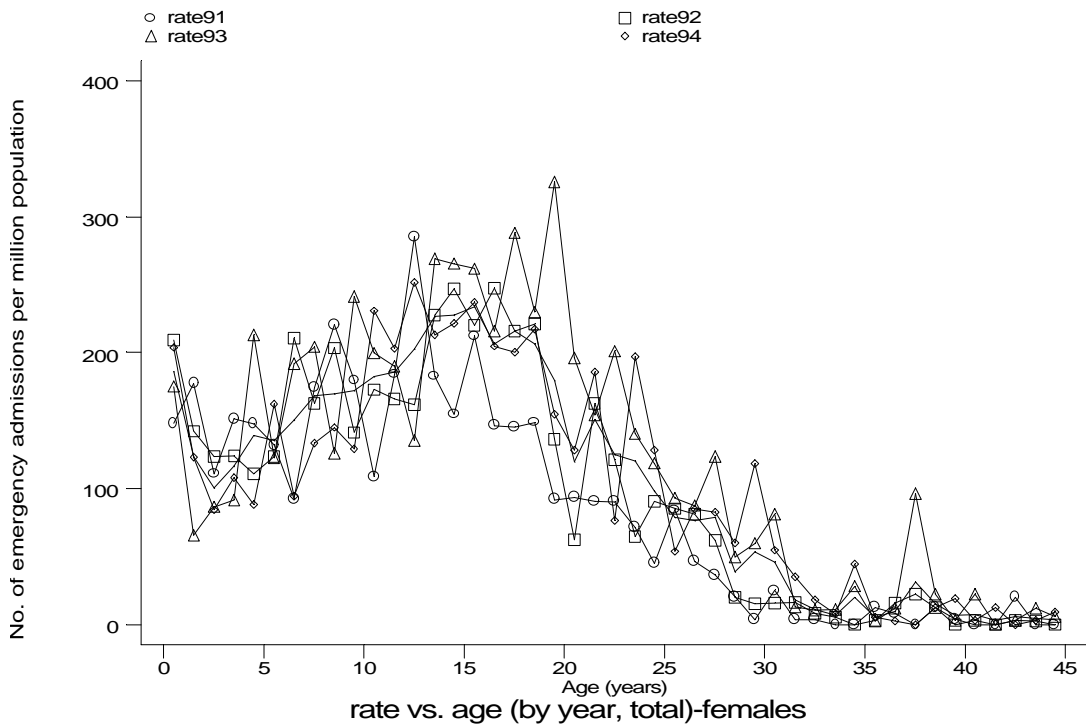
h1e7d2m.gph: MALES
7. Cystic fibrosis

Age-sex distributions, yearly trends and cohort analysis (crude rates)

- HES Emergency admissions, England, April 1991-December 1994



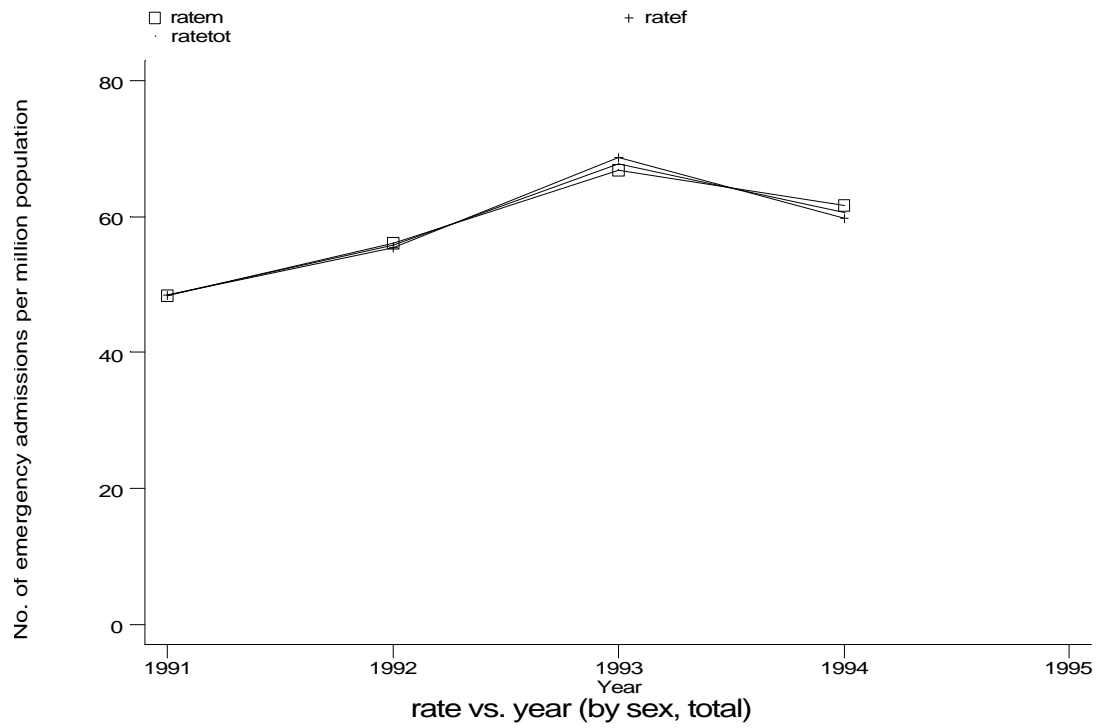
h1e7d1f.gph: FEMALES
7. Cystic fibrosis



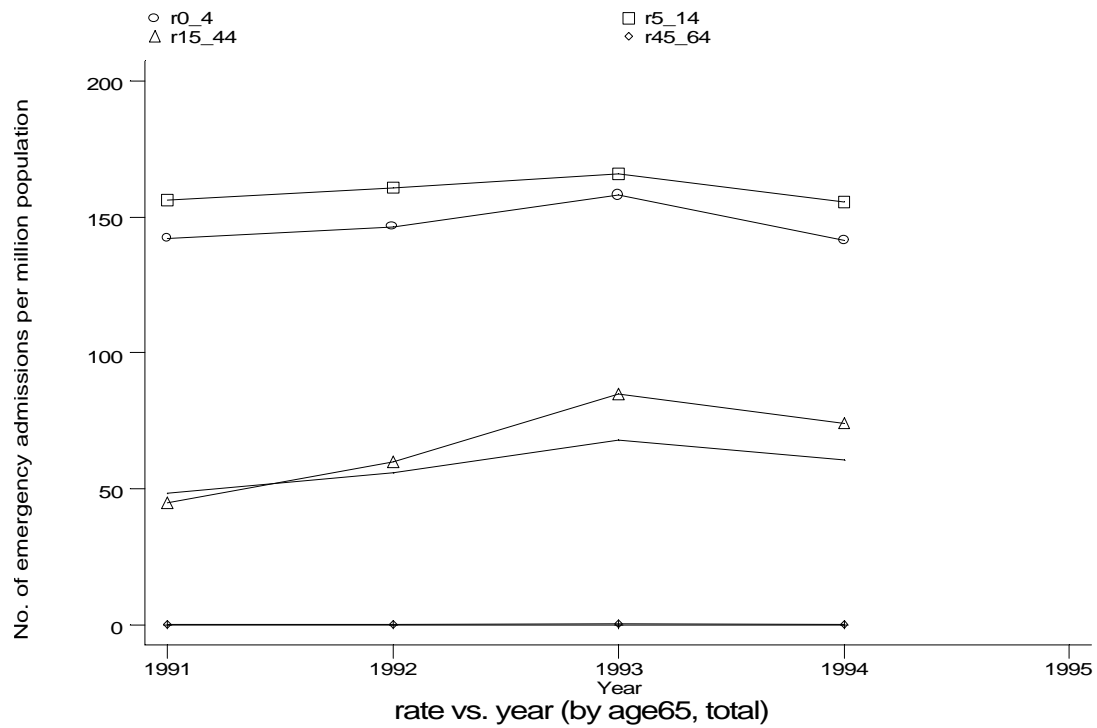
h1e7d2f.gph: FEMALES
7. Cystic fibrosis

Age-sex distributions, yearly trends and cohort analysis (crude rates)

- HES Emergency admissions, England, April 1991-December 1994



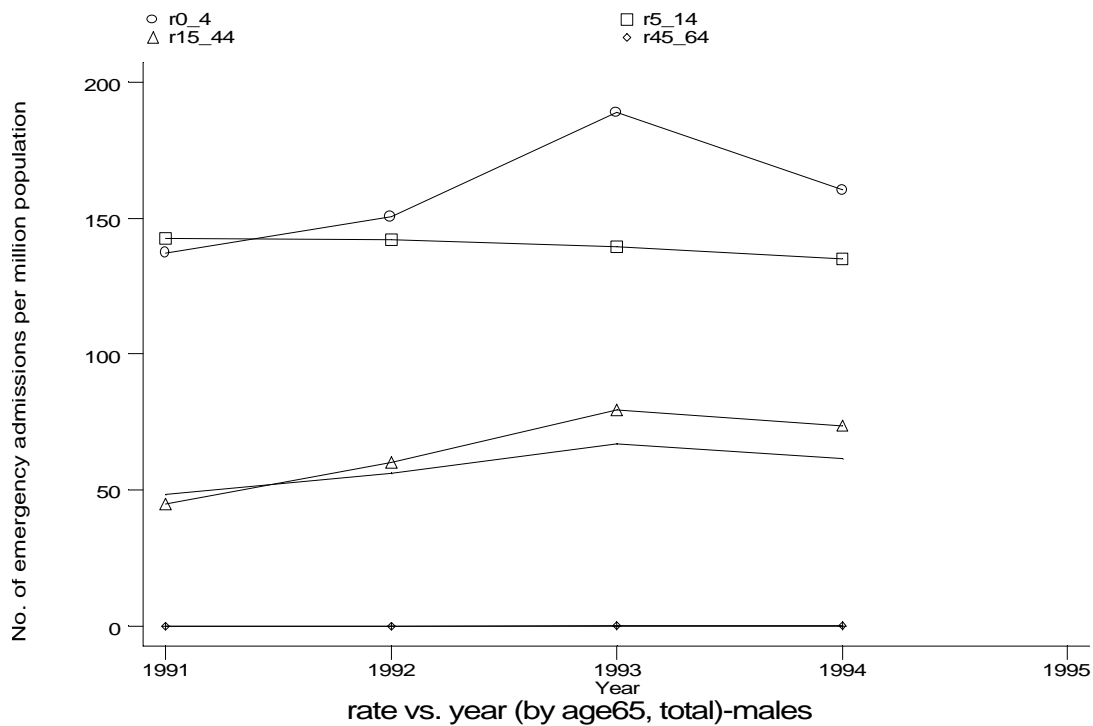
h1e7e.gph
7. Cystic fibrosis



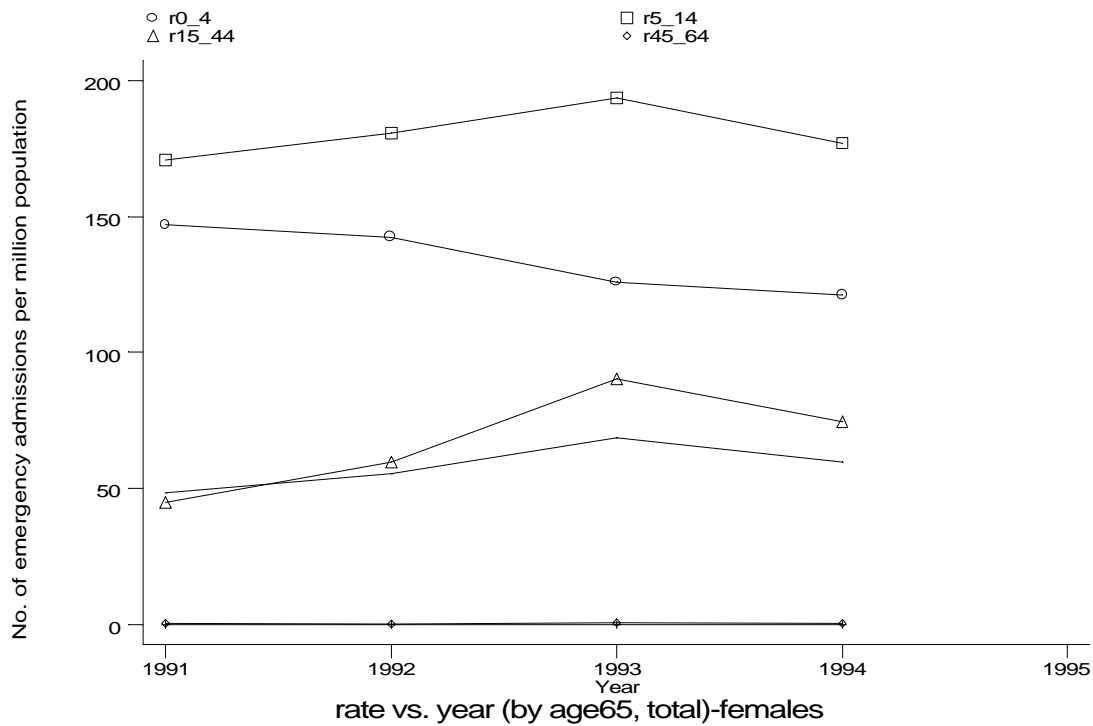
h1e7f.gph
7. Cystic fibrosis

Age-sex distributions, yearly trends and cohort analysis (crude rates)

- HES Emergency admissions, England, April 1991-December 1994



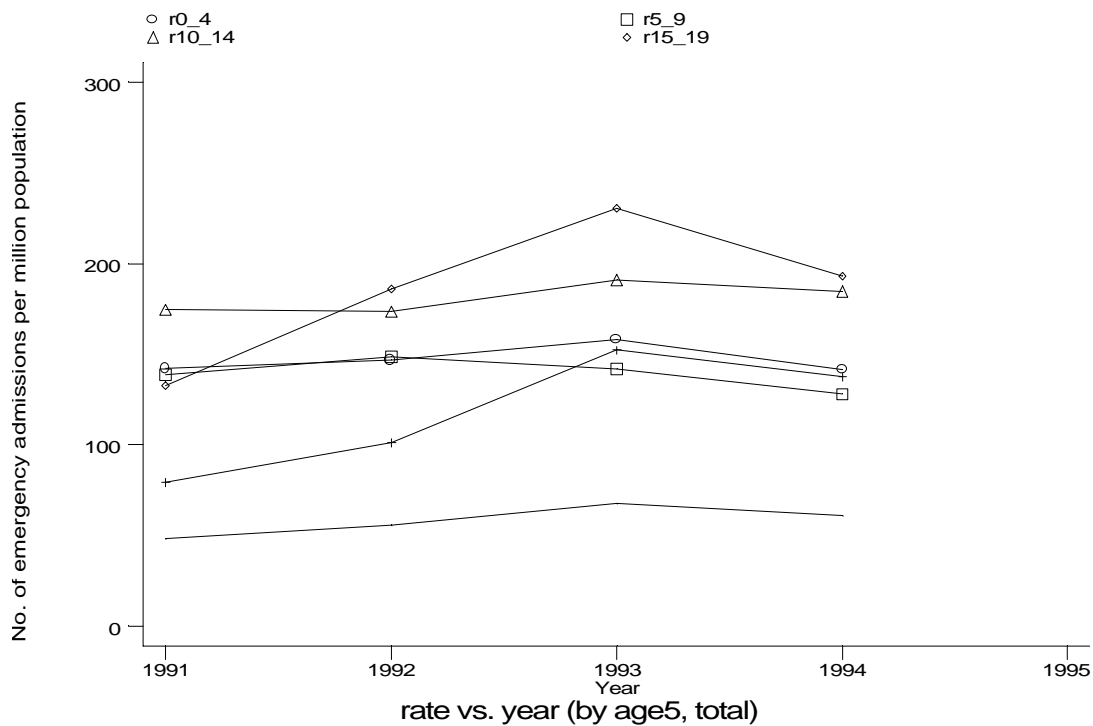
h1e7fm.gph: MALES
7. Cystic fibrosis



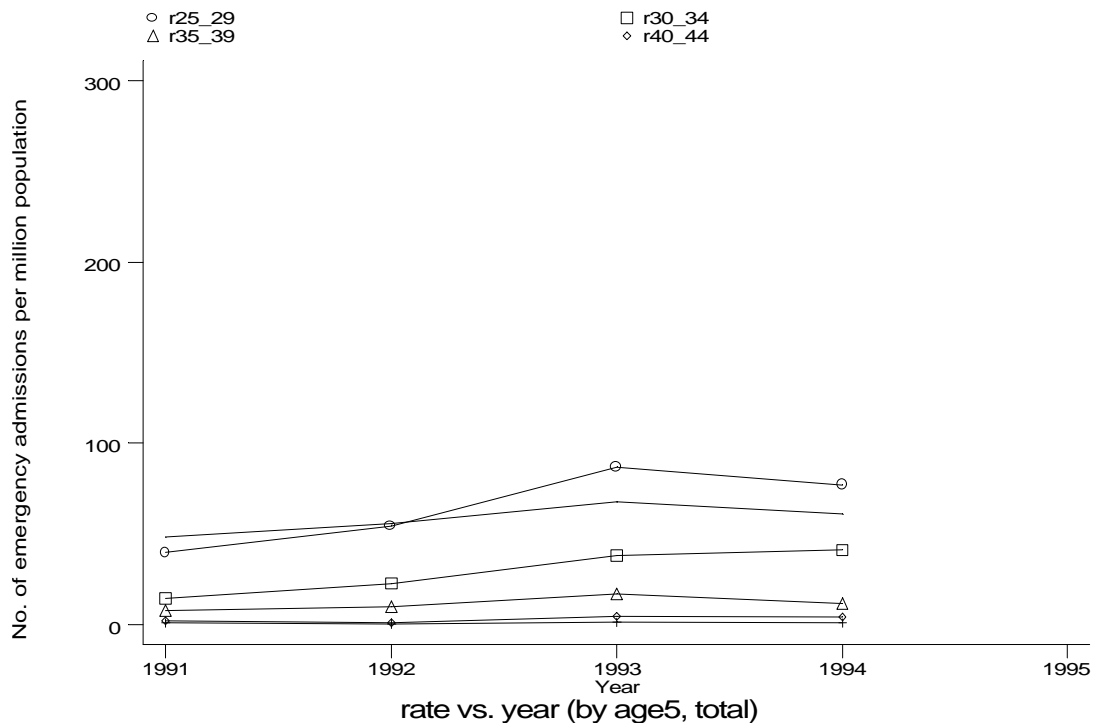
h1e7ff.gph: FEMALES
7. Cystic fibrosis

Age-sex distributions, yearly trends and cohort analysis (crude rates)

- HES Emergency admissions, England, April 1991-December 1994



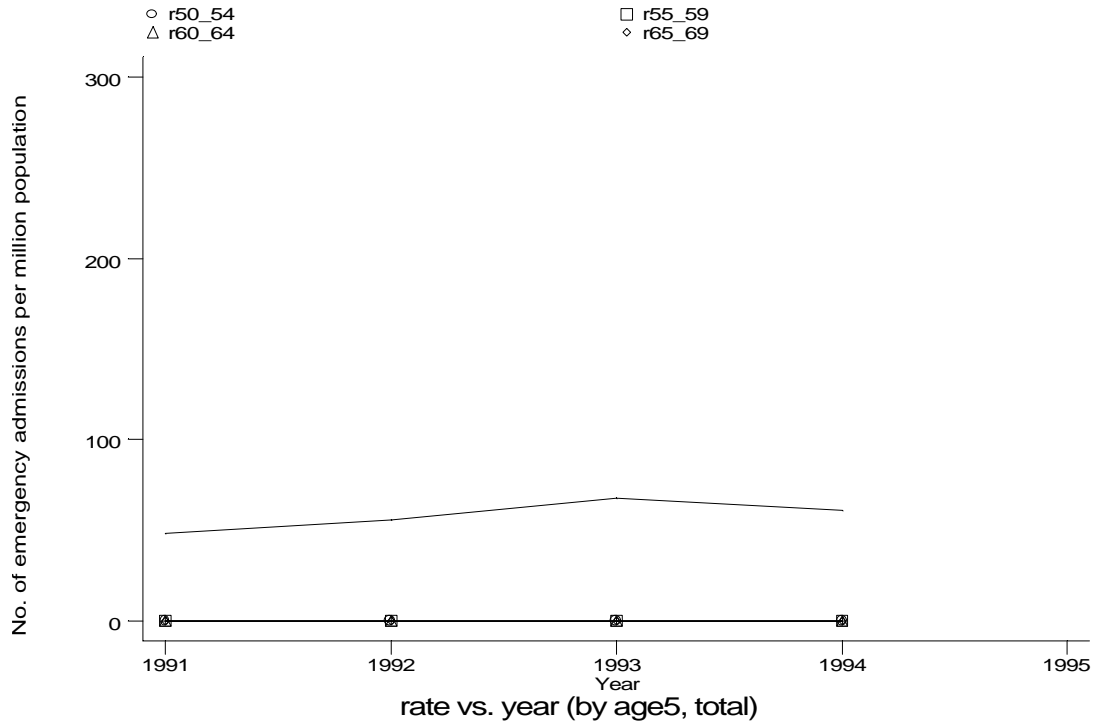
h1e7g1.gph
7. Cystic fibrosis



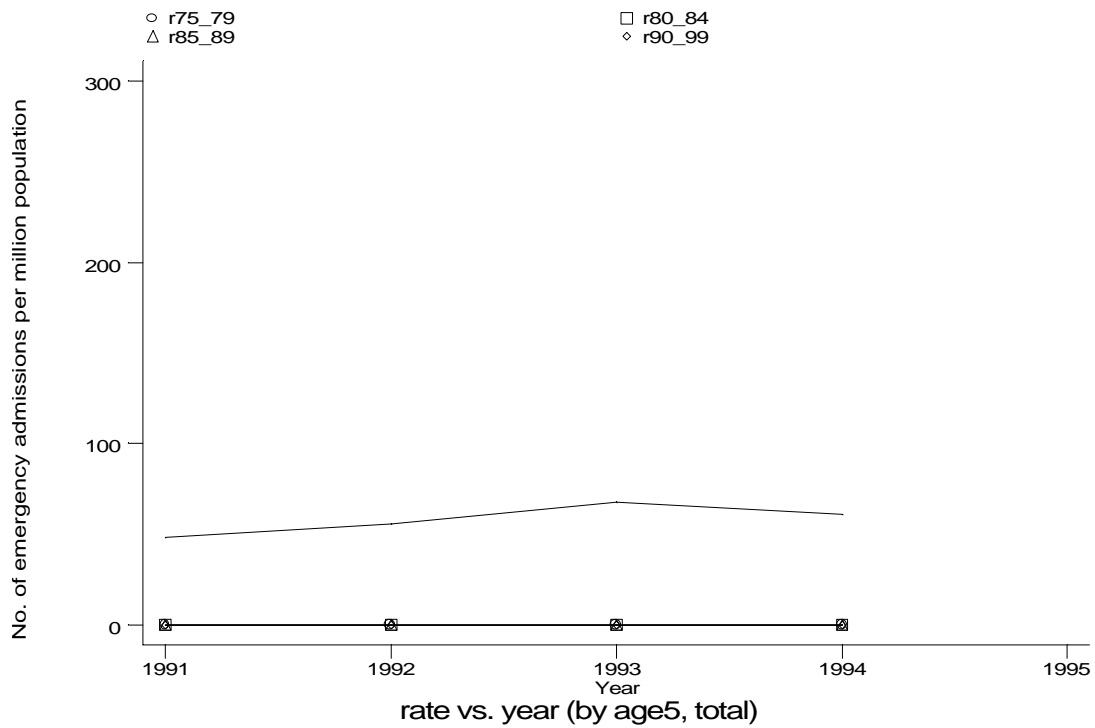
h1e7g2.gph
7. Cystic fibrosis

Age-sex distributions, yearly trends and cohort analysis (crude rates)

- HES Emergency admissions, England, April 1991-December 1994



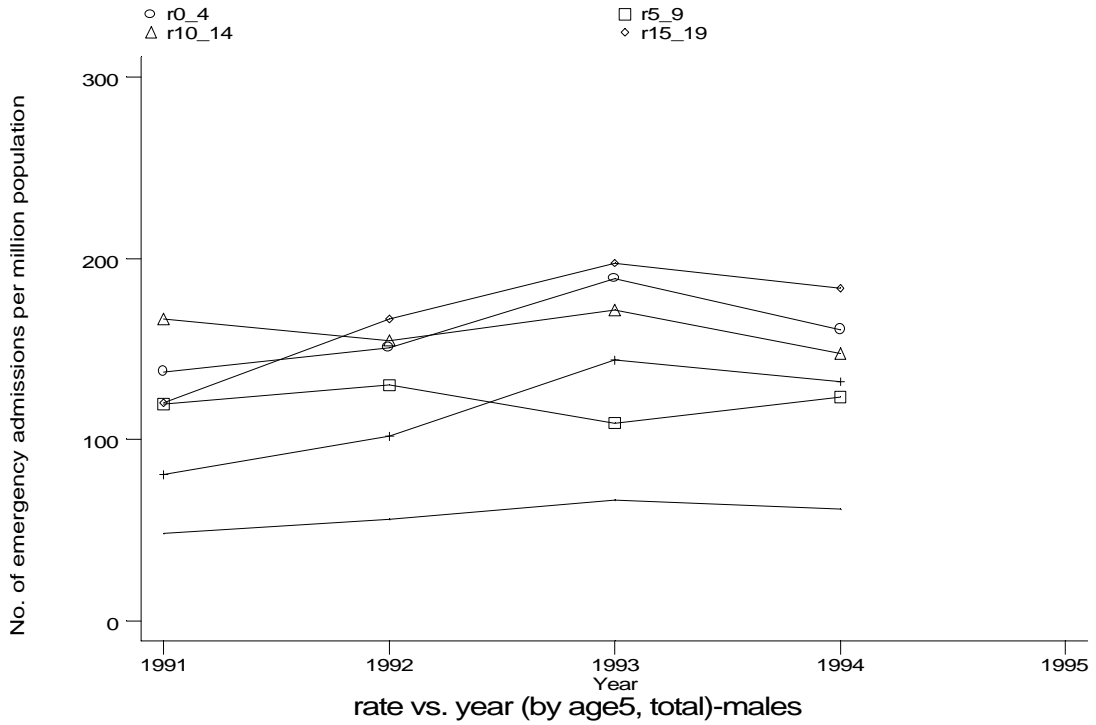
h1e7g3.gph
7. Cystic fibrosis



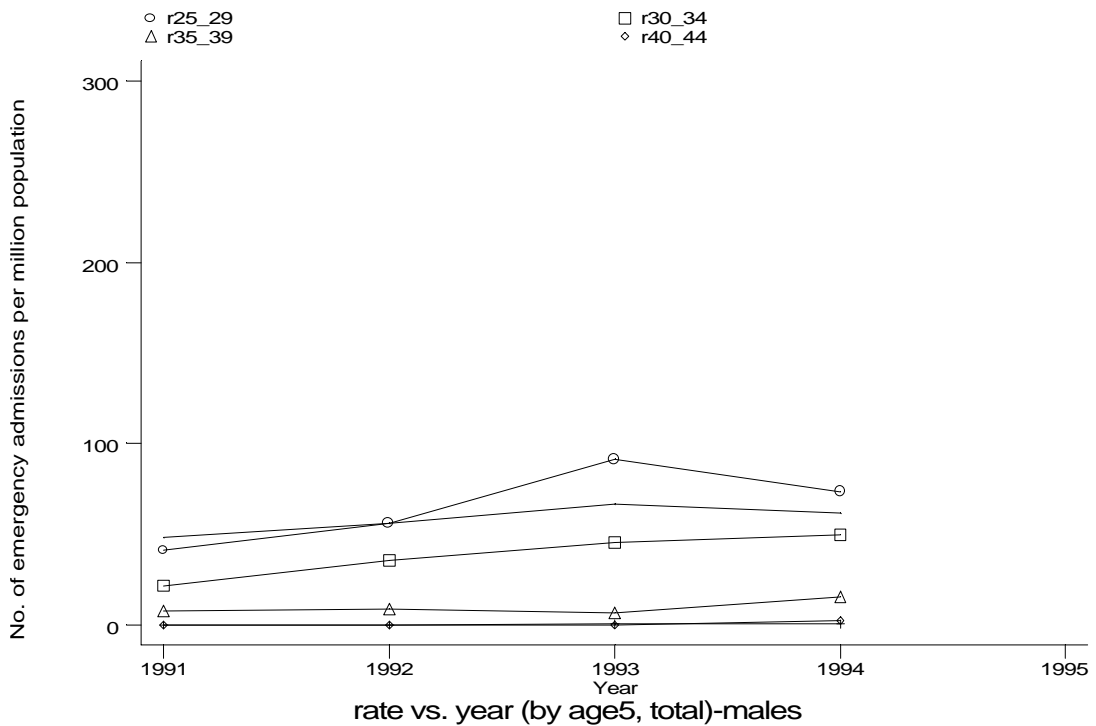
h1e7g4.gph
7. Cystic fibrosis

Age-sex distributions, yearly trends and cohort analysis (crude rates)

- HES Emergency admissions, England, April 1991-December 1994



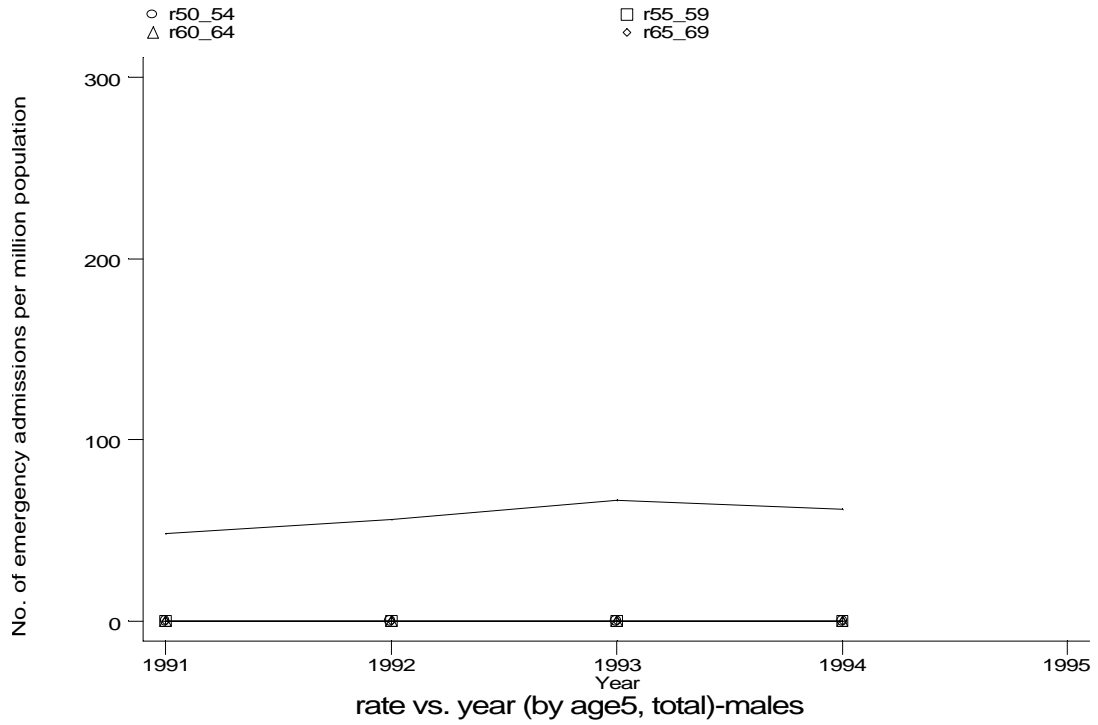
h1e7g1m.gph: MALES
7. Cystic fibrosis



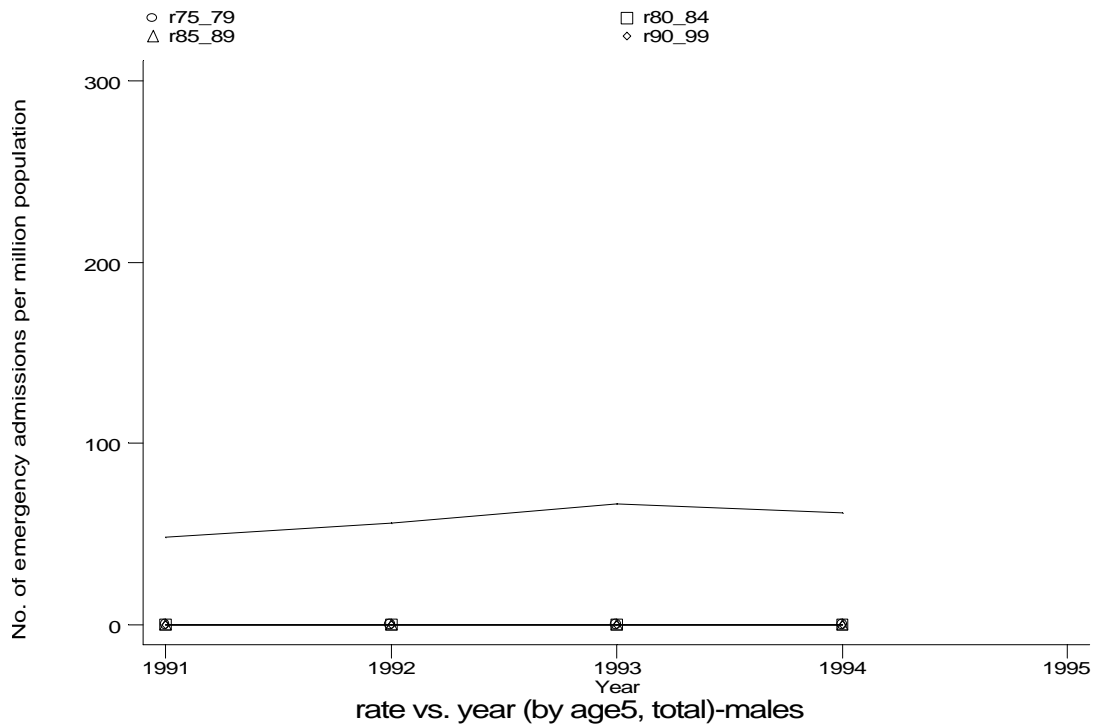
h1e7g2m.gph: MALES
7. Cystic fibrosis

Age-sex distributions, yearly trends and cohort analysis (crude rates)

- HES Emergency admissions, England, April 1991-December 1994



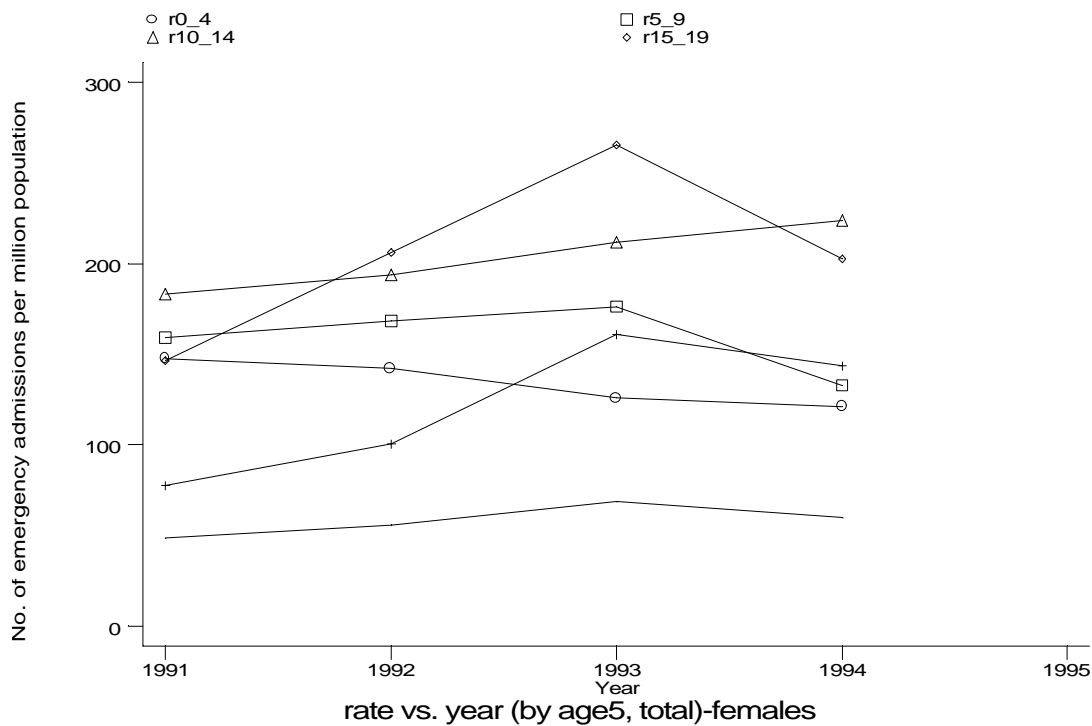
h1e7g3m.gph: MALES
7. Cystic fibrosis



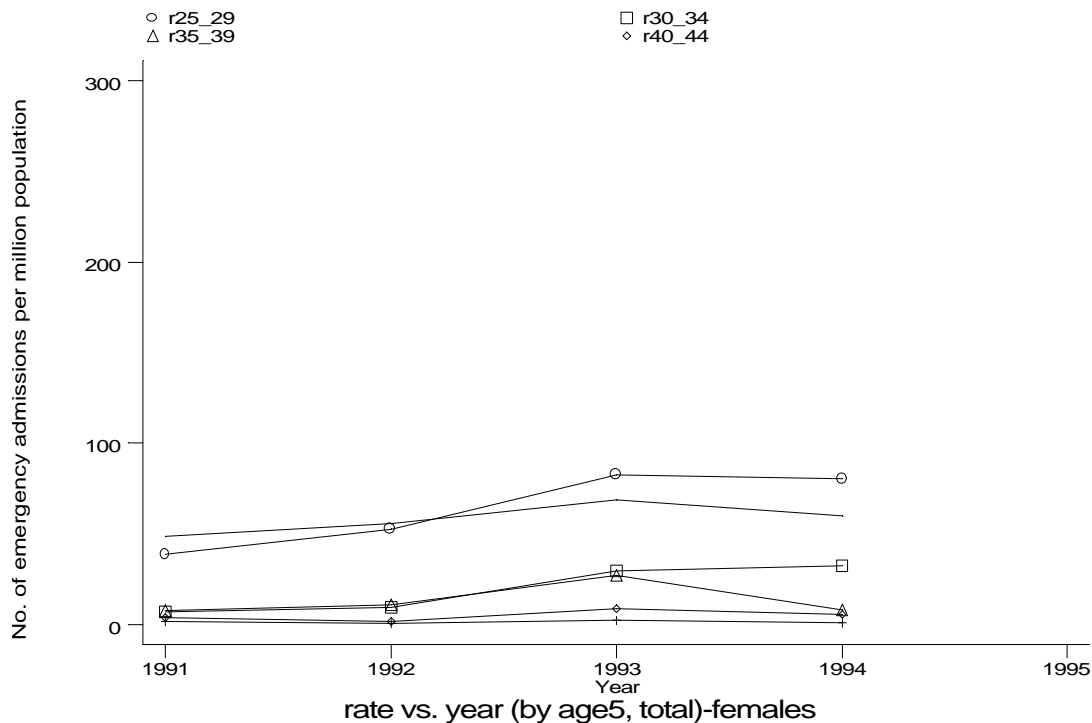
h1e7g4m.gph: MALES
7. Cystic fibrosis

Age-sex distributions, yearly trends and cohort analysis (crude rates)

- HES Emergency admissions, England, April 1991-December 1994



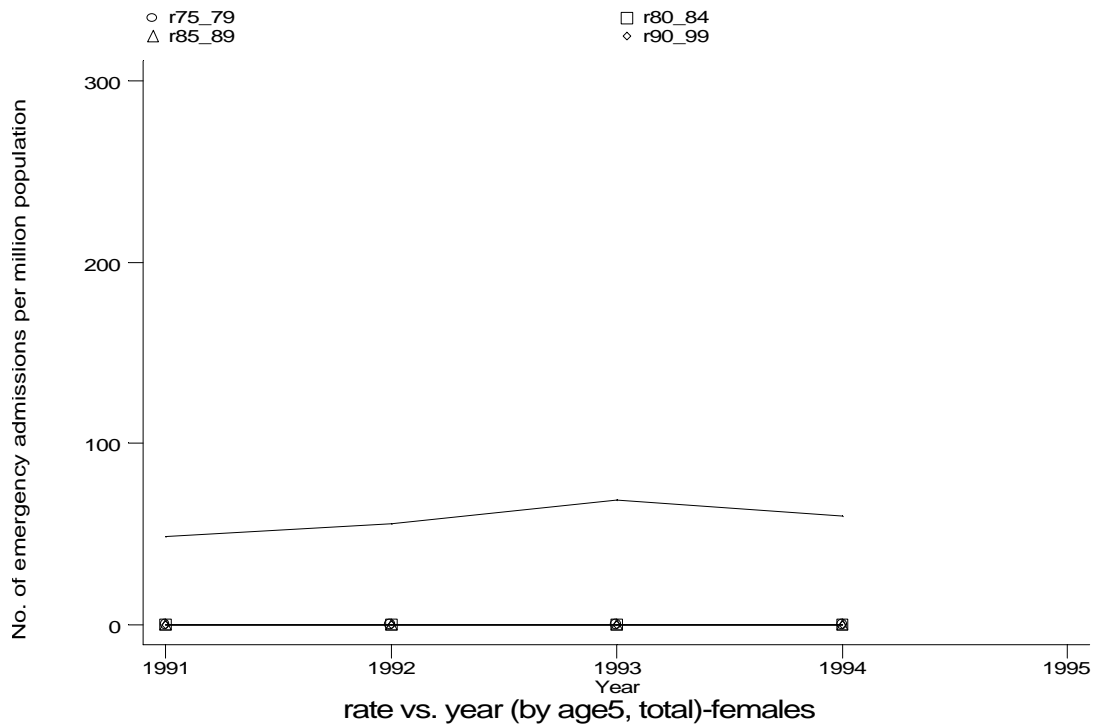
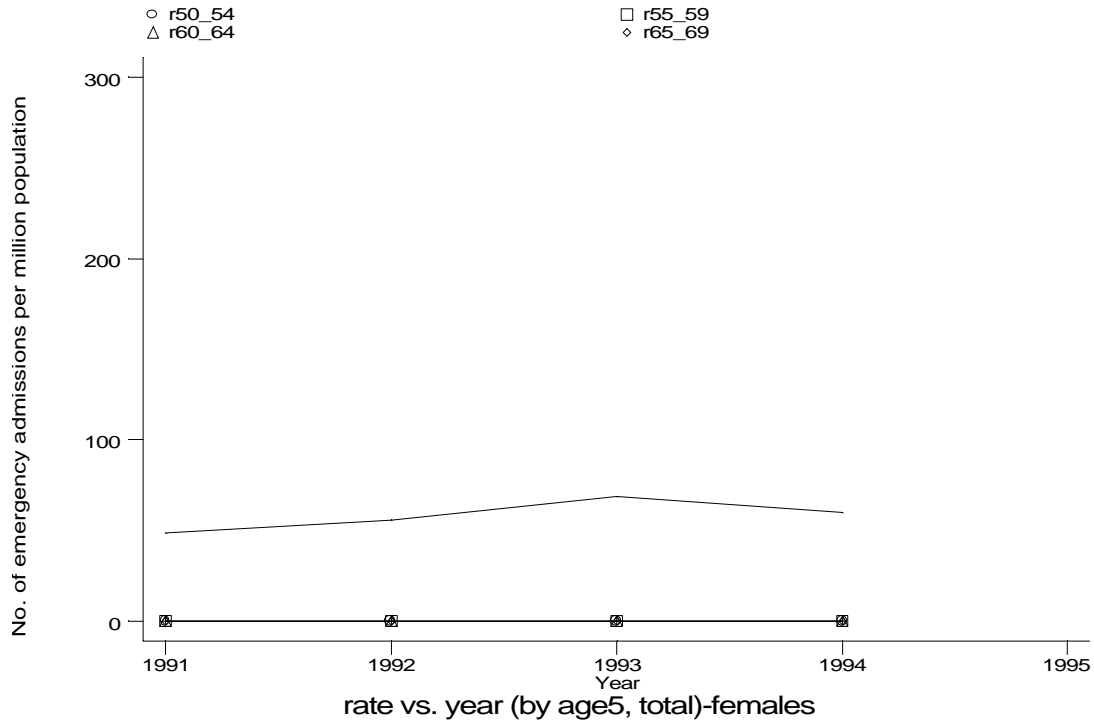
h1e7g1f.gph: FEMALES
7. Cystic fibrosis



h1e7g2f.gph: FEMALES
7. Cystic fibrosis

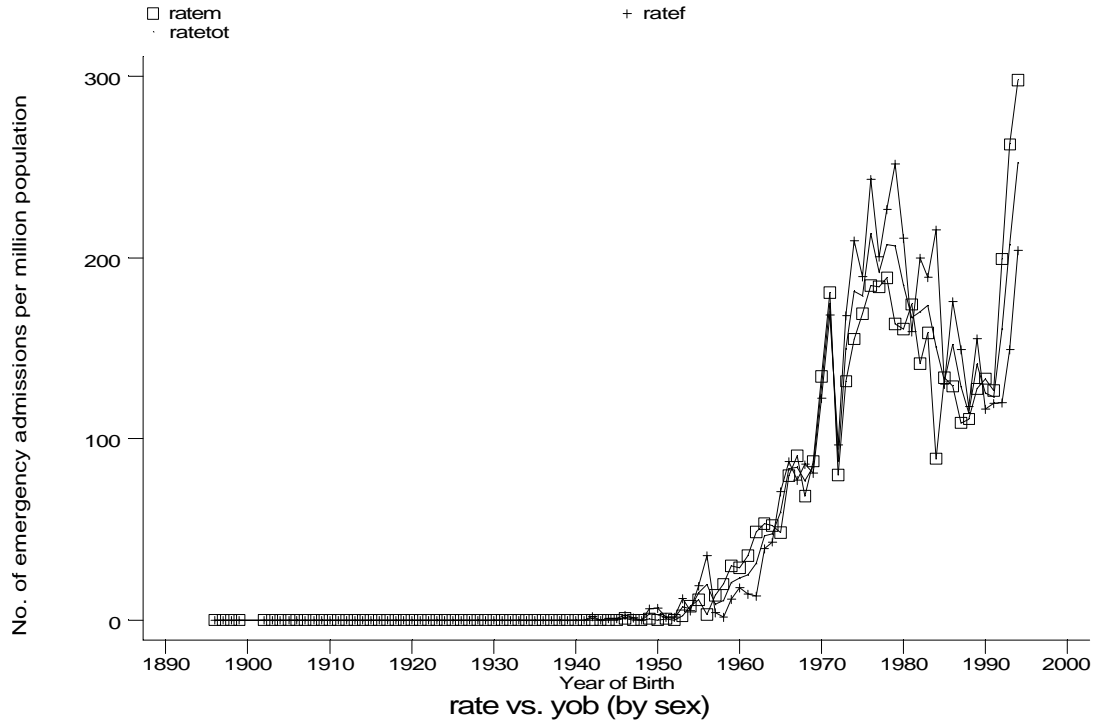
Age-sex distributions, yearly trends and cohort analysis (crude rates)

- HES Emergency admissions, England, April 1991-December 1994



Age-sex distributions, yearly trends and cohort analysis (crude rates)

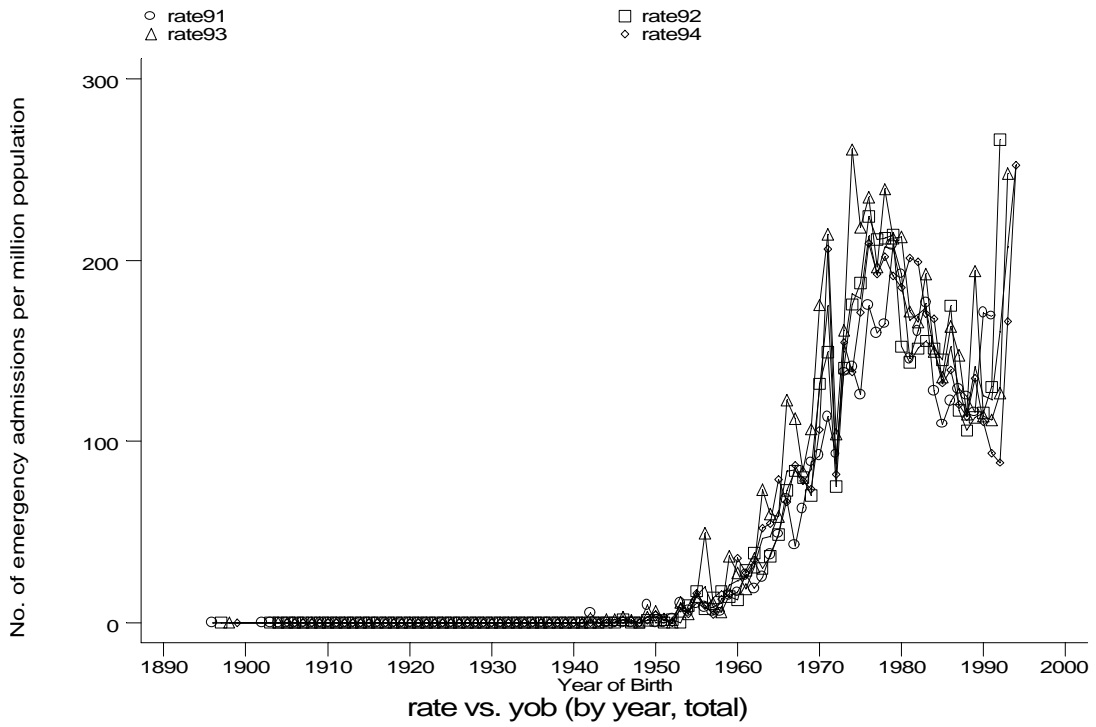
- HES Emergency admissions, England, April 1991-December 1994



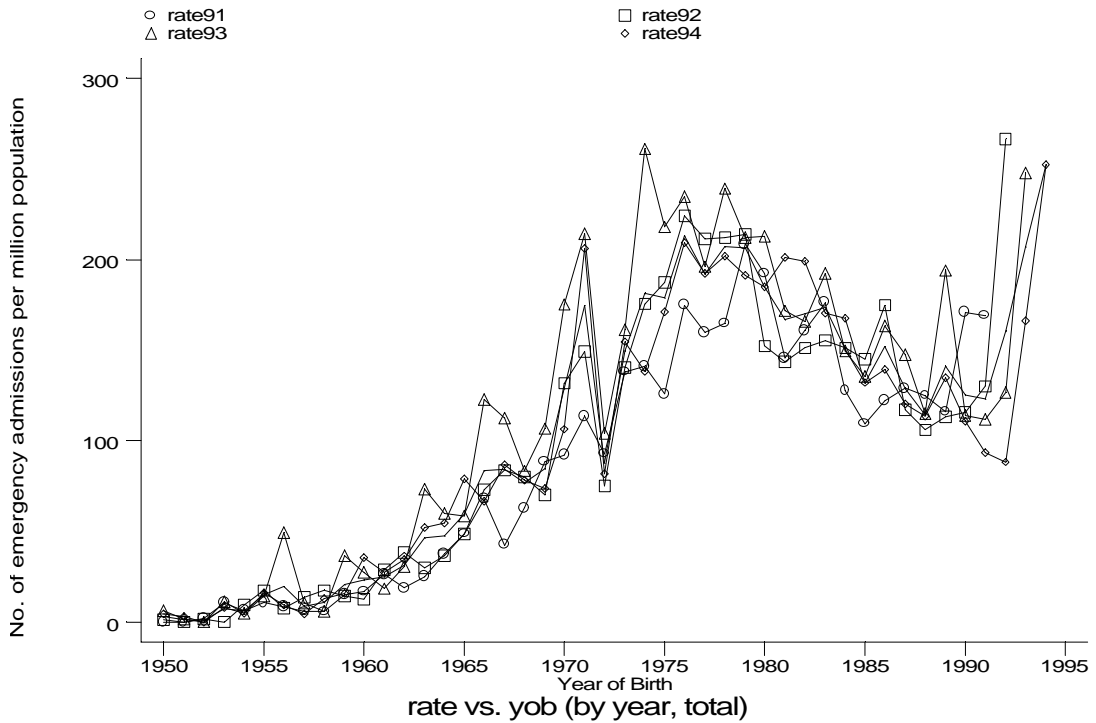
h1e7h.gph
7. Cystic fibrosis

Age-sex distributions, yearly trends and cohort analysis (crude rates)

- HES Emergency admissions, England, April 1991-December 1994



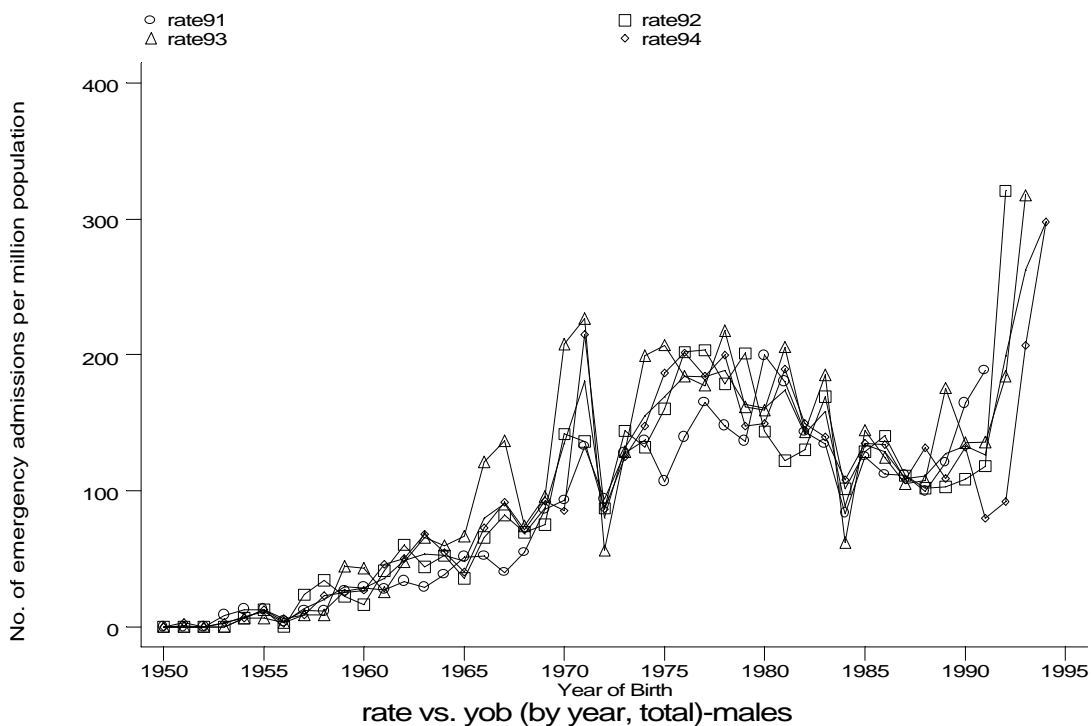
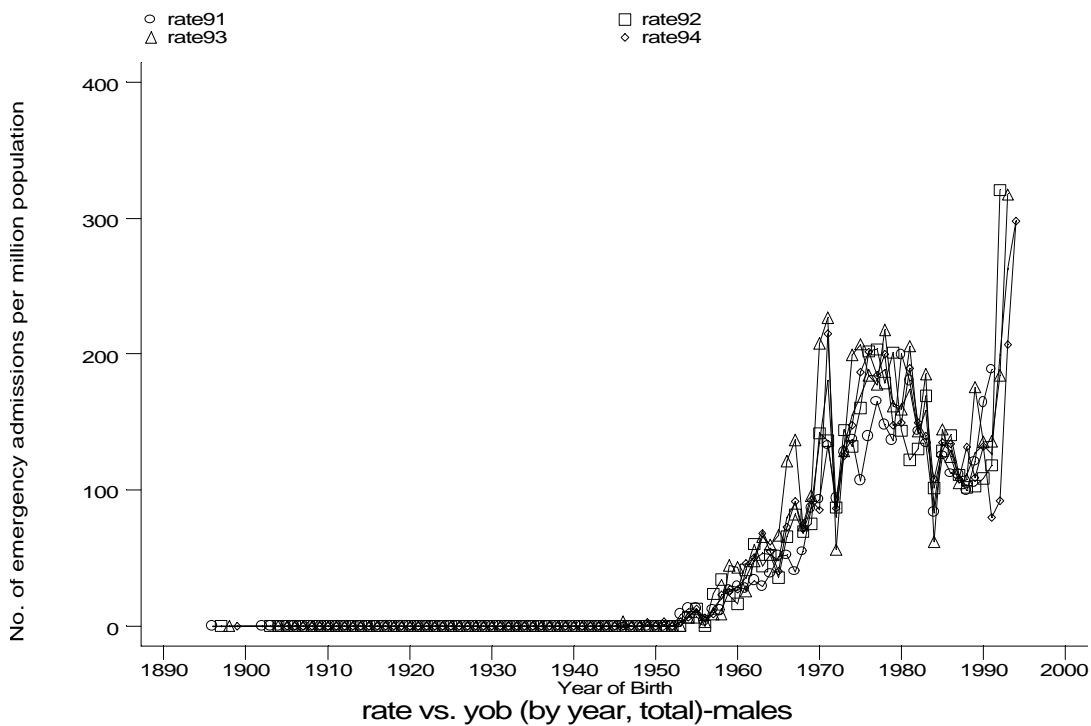
h1e7i1.gph
7. Cystic fibrosis



h1e7i2.gph
7. Cystic fibrosis

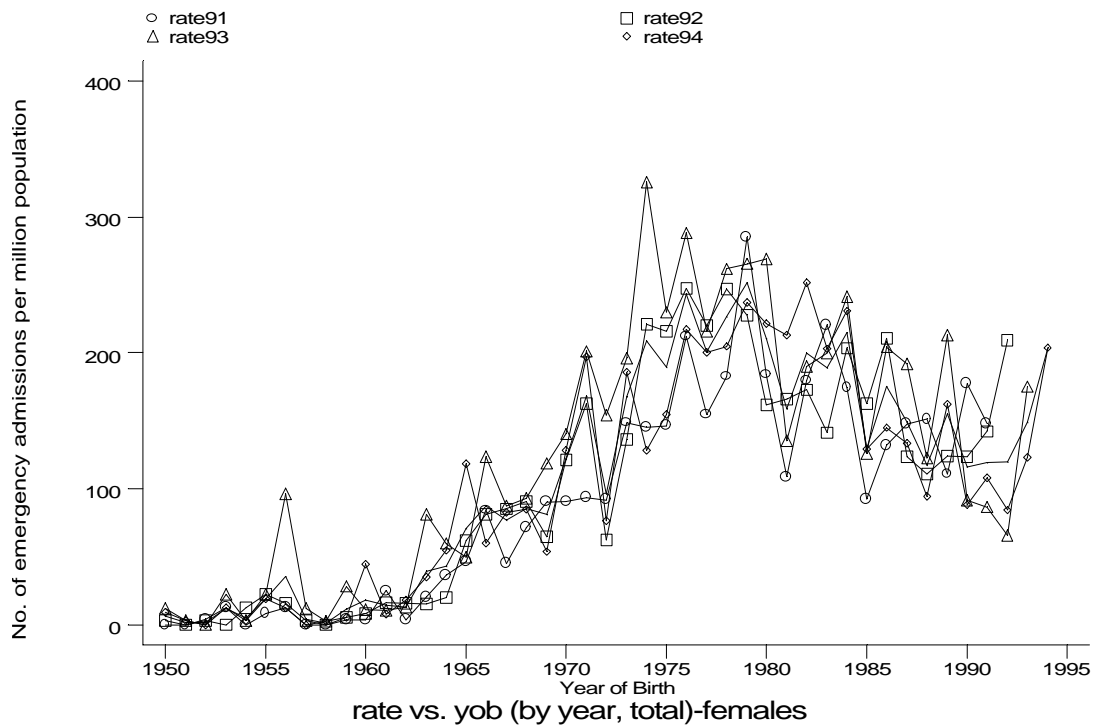
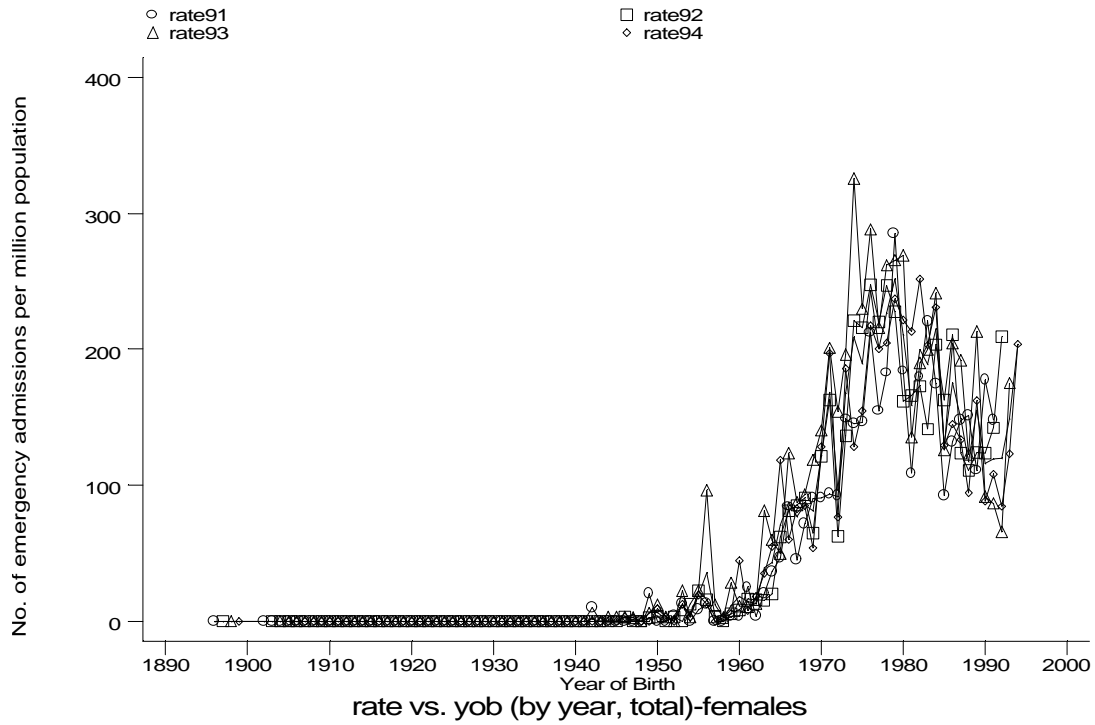
Age-sex distributions, yearly trends and cohort analysis (crude rates)

- HES Emergency admissions, England, April 1991-December 1994



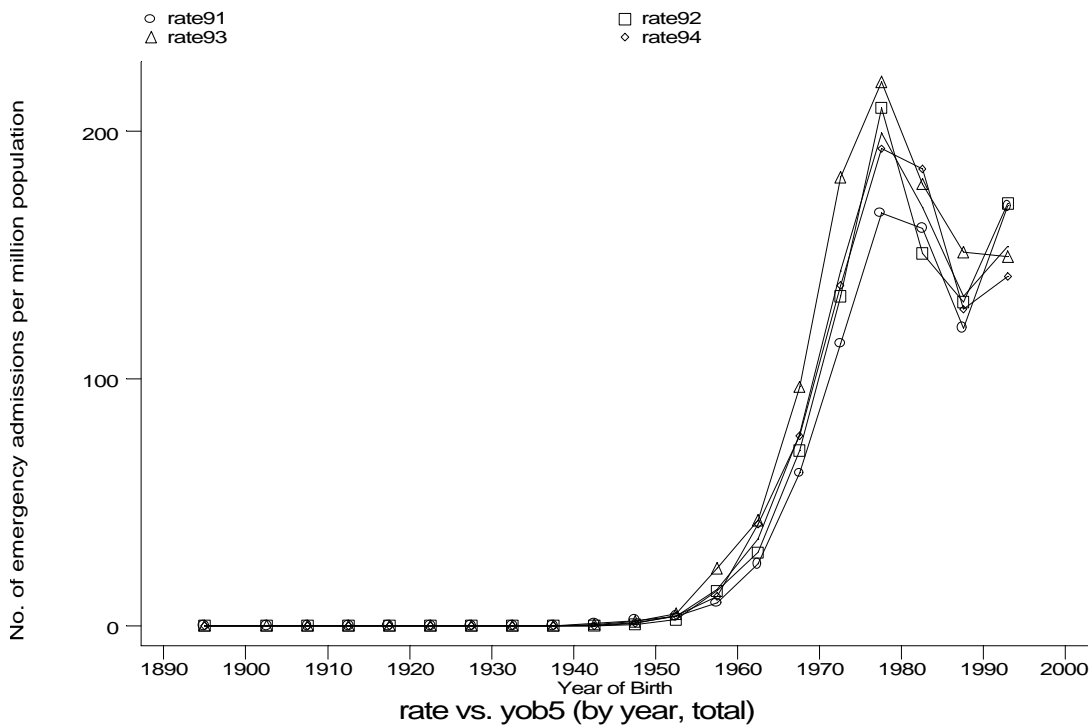
Age-sex distributions, yearly trends and cohort analysis (crude rates)

- HES Emergency admissions, England, April 1991-December 1994

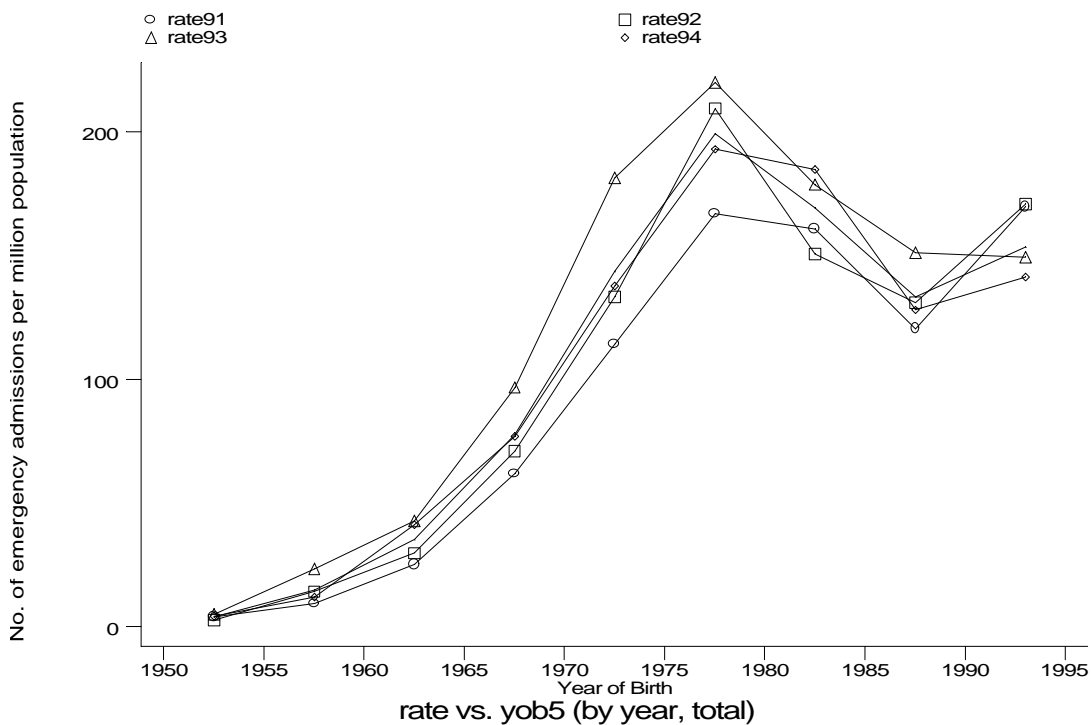


Age-sex distributions, yearly trends and cohort analysis (crude rates)

- HES Emergency admissions, England, April 1991-December 1994



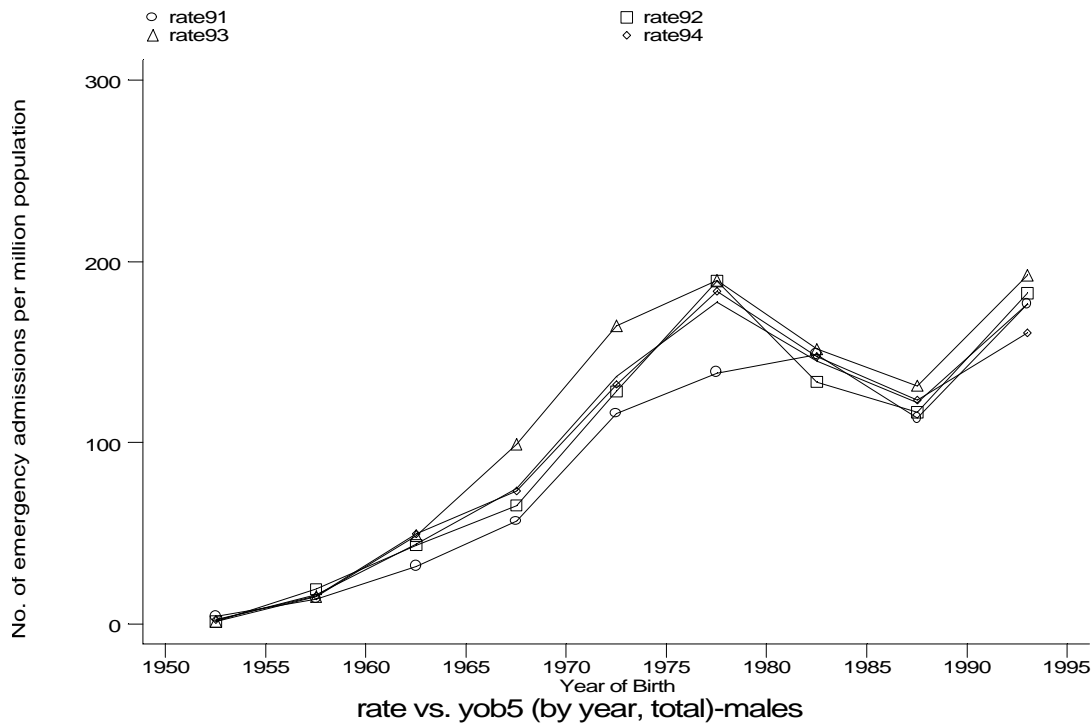
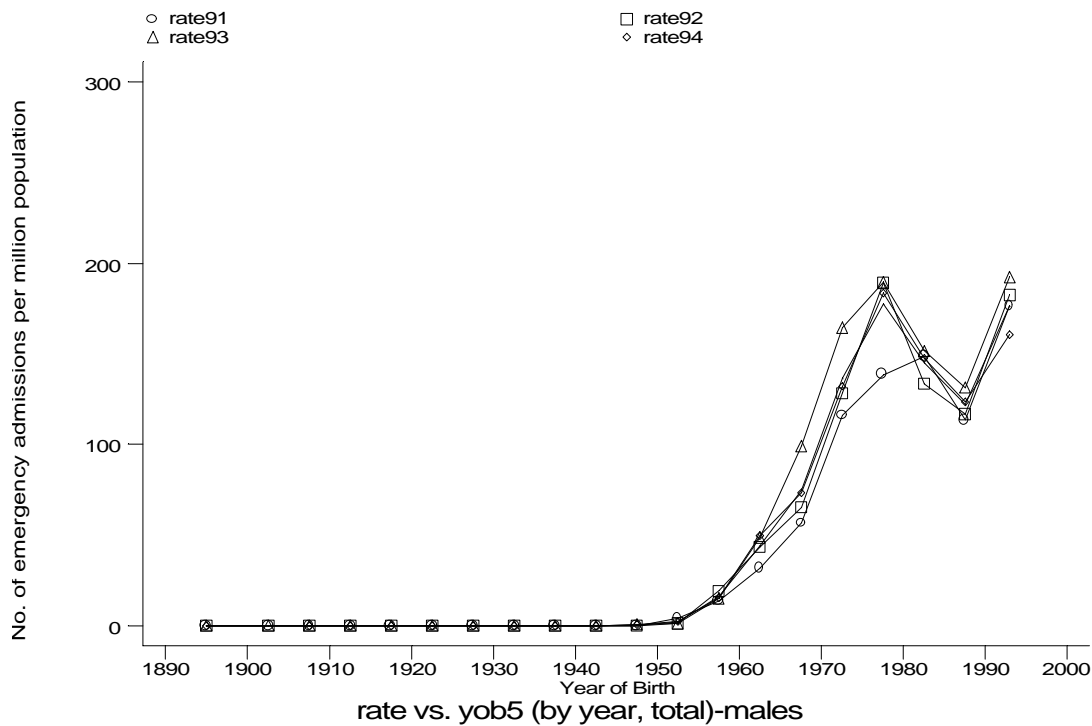
h1e7j1.gph
7. Cystic fibrosis



h1e7j2.gph
7. Cystic fibrosis

Age-sex distributions, yearly trends and cohort analysis (crude rates)

- HES Emergency admissions, England, April 1991-December 1994



Age-sex distributions, yearly trends and cohort analysis (crude rates)

- HES Emergency admissions, England, April 1991-December 1994

