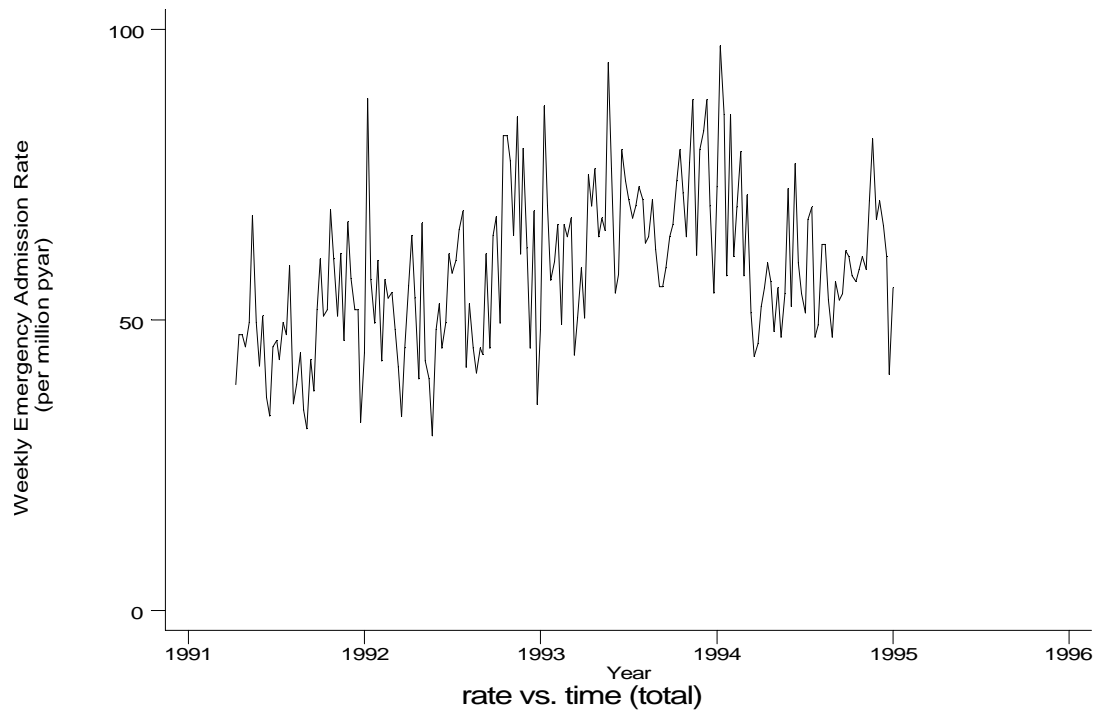
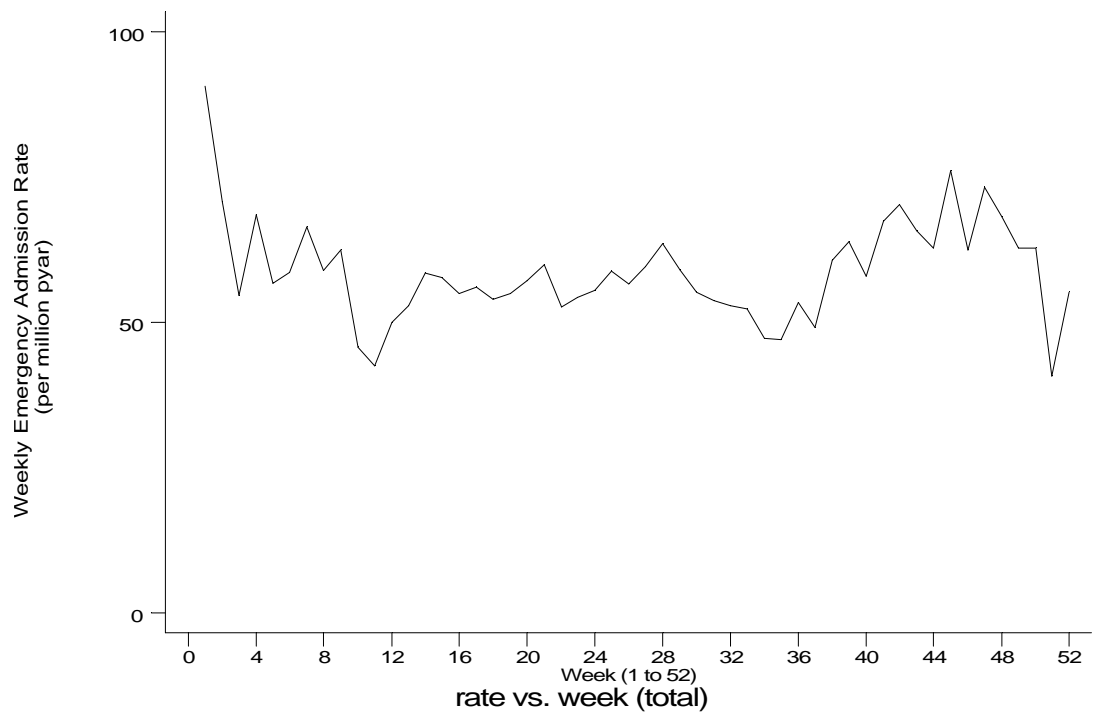


**A14 Cystic fibrosis standard output graphs**  
**Seasonality (crude rates by week of year)**

- **HES Emergency admissions, England, April 1991-December 1994**



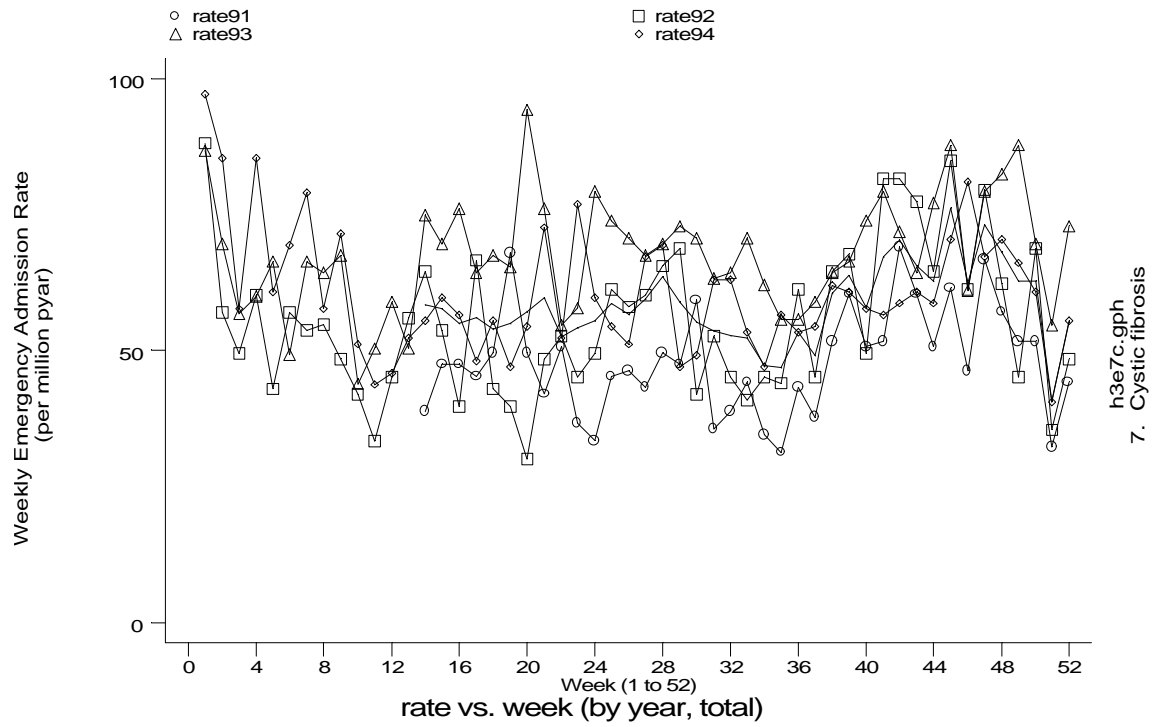
h3e7a.gph  
7. Cystic fibrosis



h3e7b.gph  
7. Cystic fibrosis

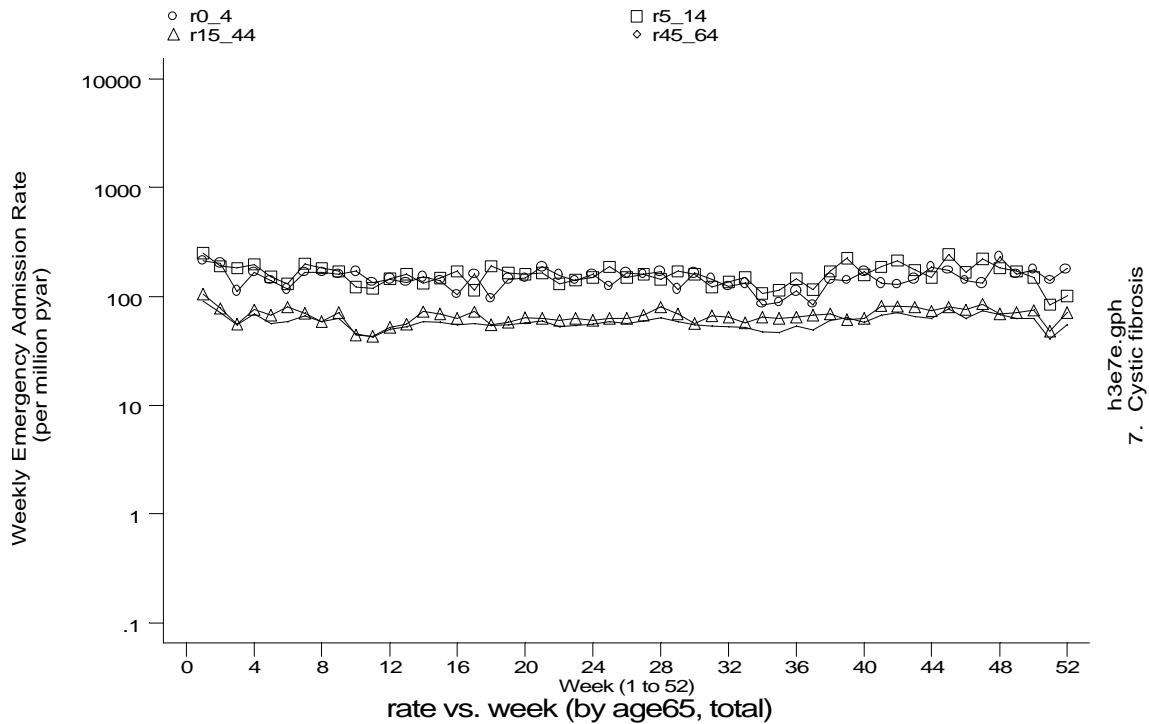
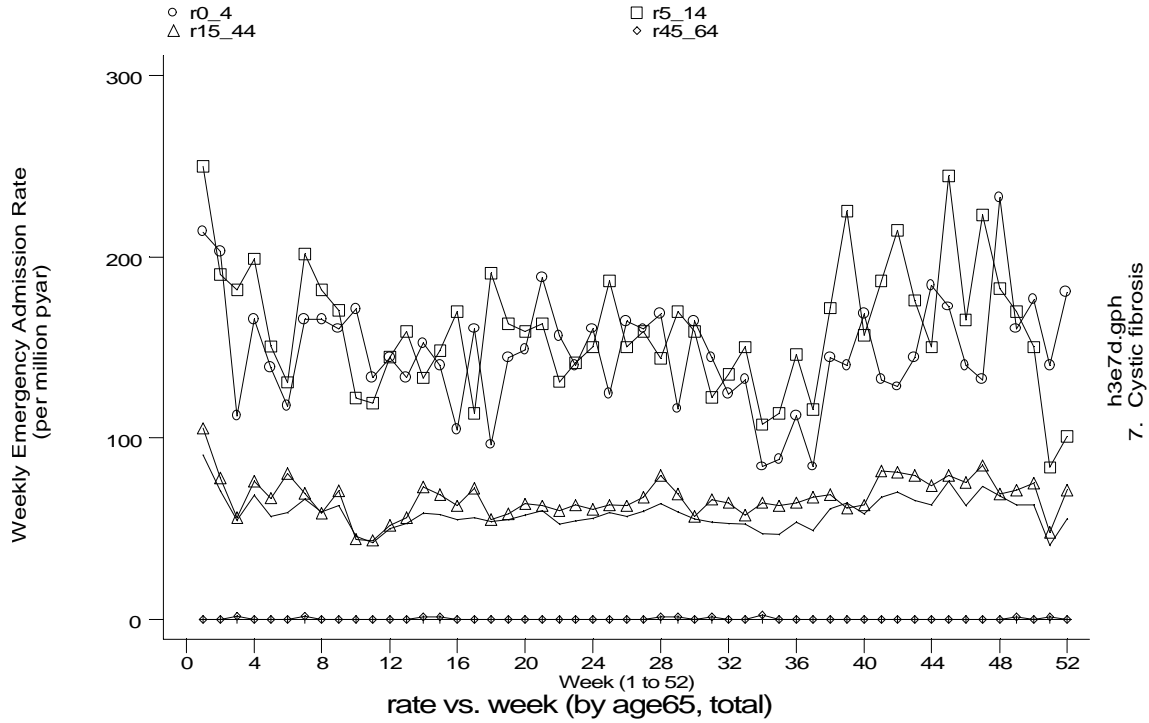
**A14 Cystic fibrosis standard output graphs**  
**Seasonality (crude rates by week of year)**

- **HES Emergency admissions, England, April 1991-December 1994**



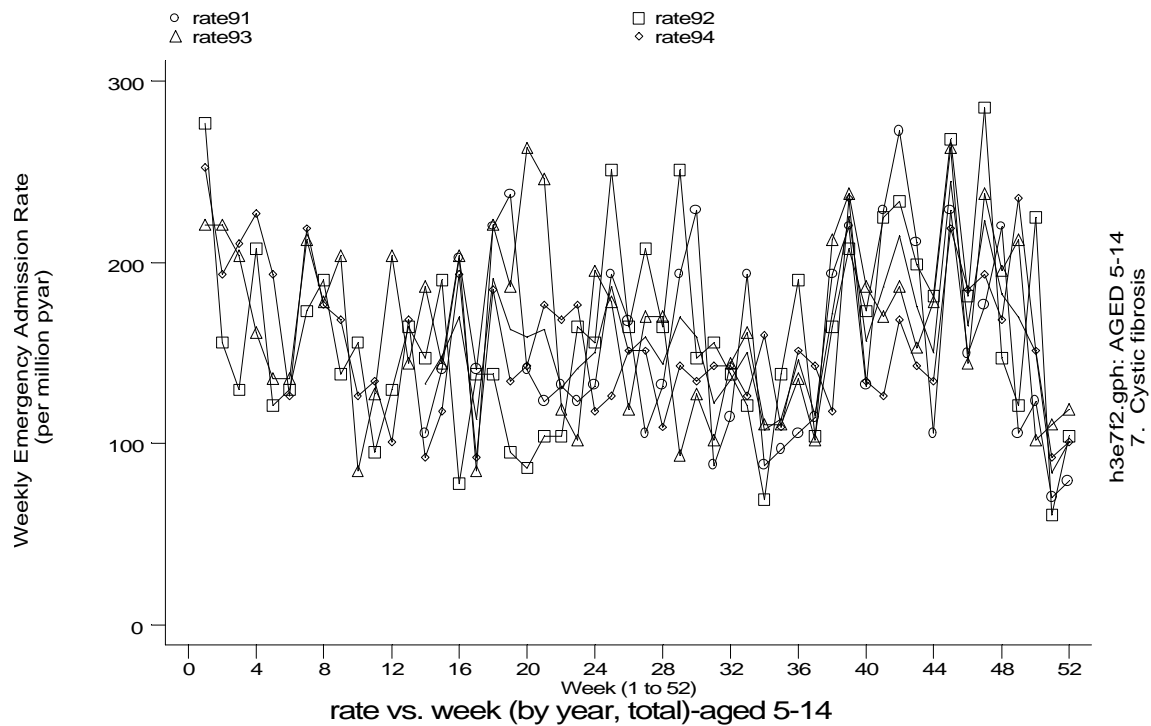
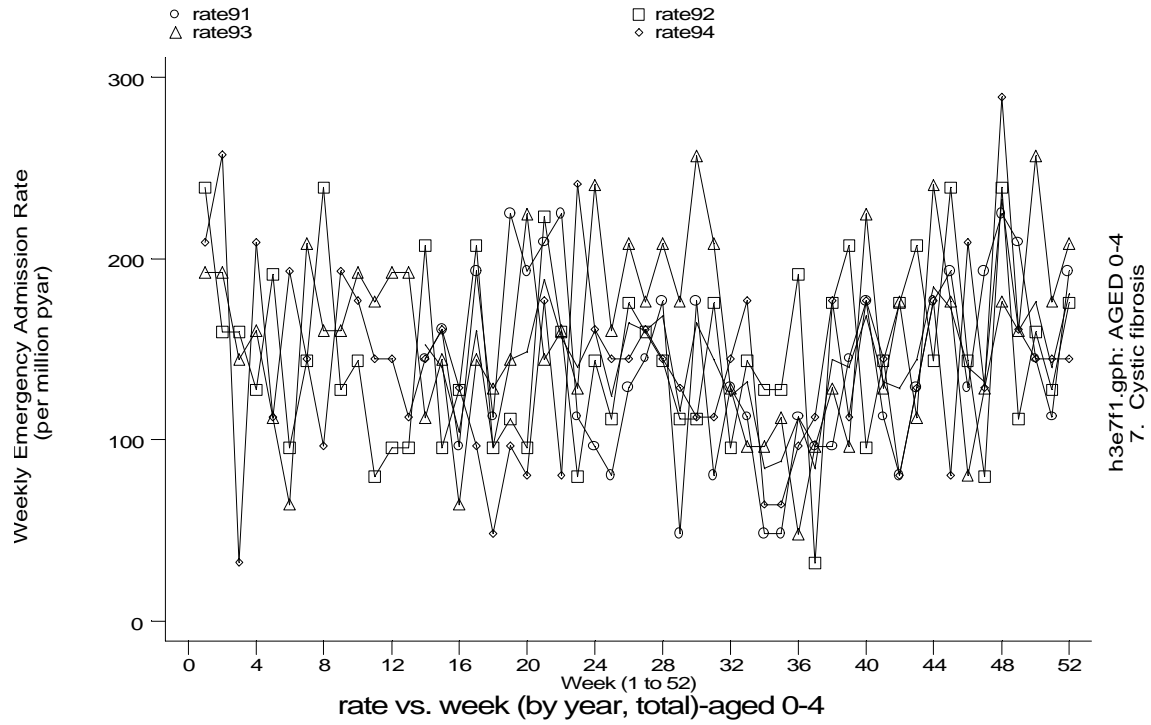
**A14 Cystic fibrosis standard output graphs**  
**Seasonality (crude rates by week of year)**

- **HES Emergency admissions, England, April 1991-December 1994**



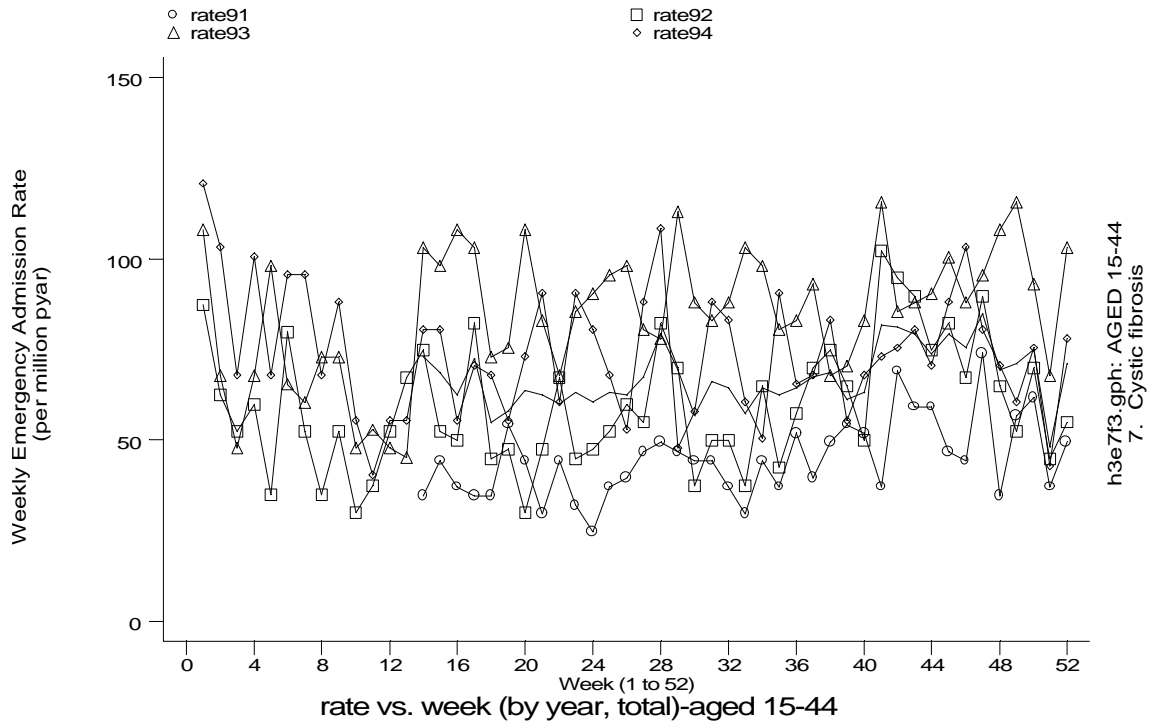
**A14 Cystic fibrosis standard output graphs**  
**Seasonality (crude rates by week of year)**

- **HES Emergency admissions, England, April 1991-December 1994**

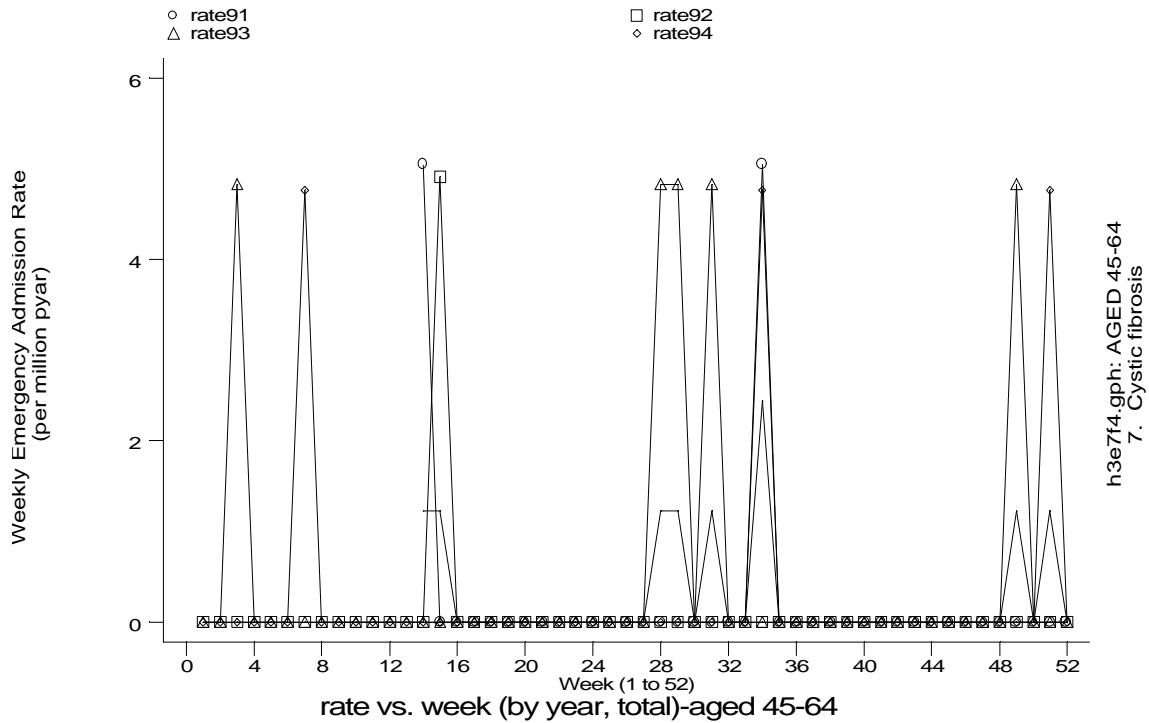


**A14 Cystic fibrosis standard output graphs**  
**Seasonality (crude rates by week of year)**

- **HES Emergency admissions, England, April 1991-December 1994**



h3e7f3.gph: AGED 15-44  
 7. Cystic fibrosis



h3e7f4.gph: AGED 45-64  
 7. Cystic fibrosis

A14 Cystic fibrosis standard output graphs  
Seasonality (crude rates by week of year)

- HES Emergency admissions, England, April 1991-December 1994

