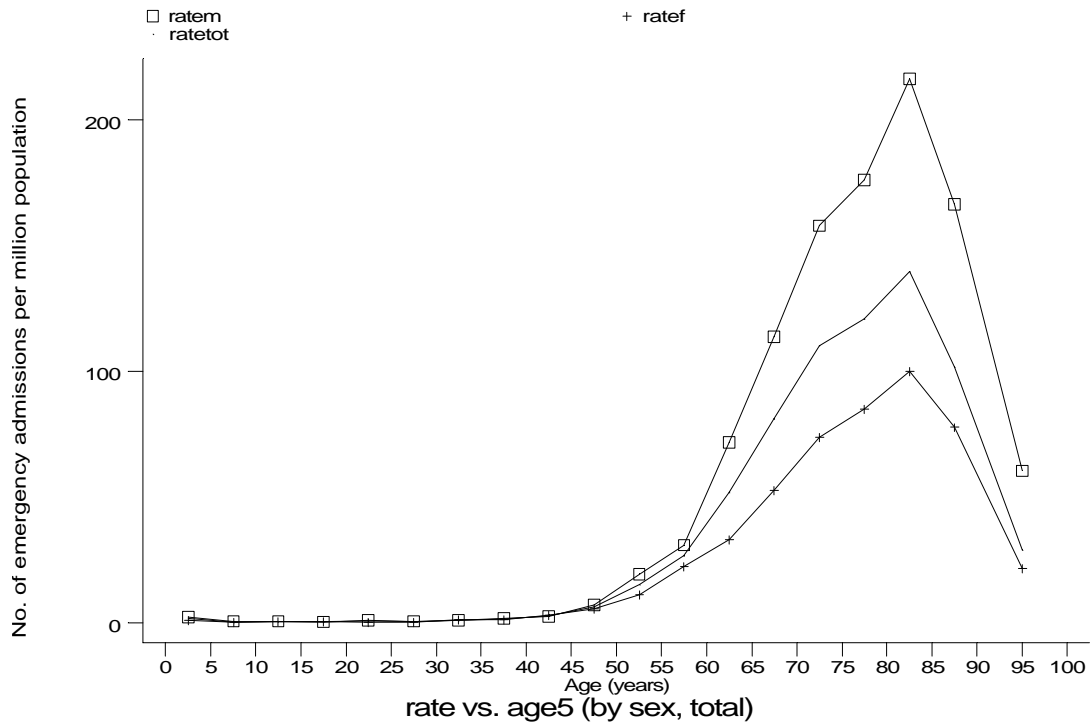
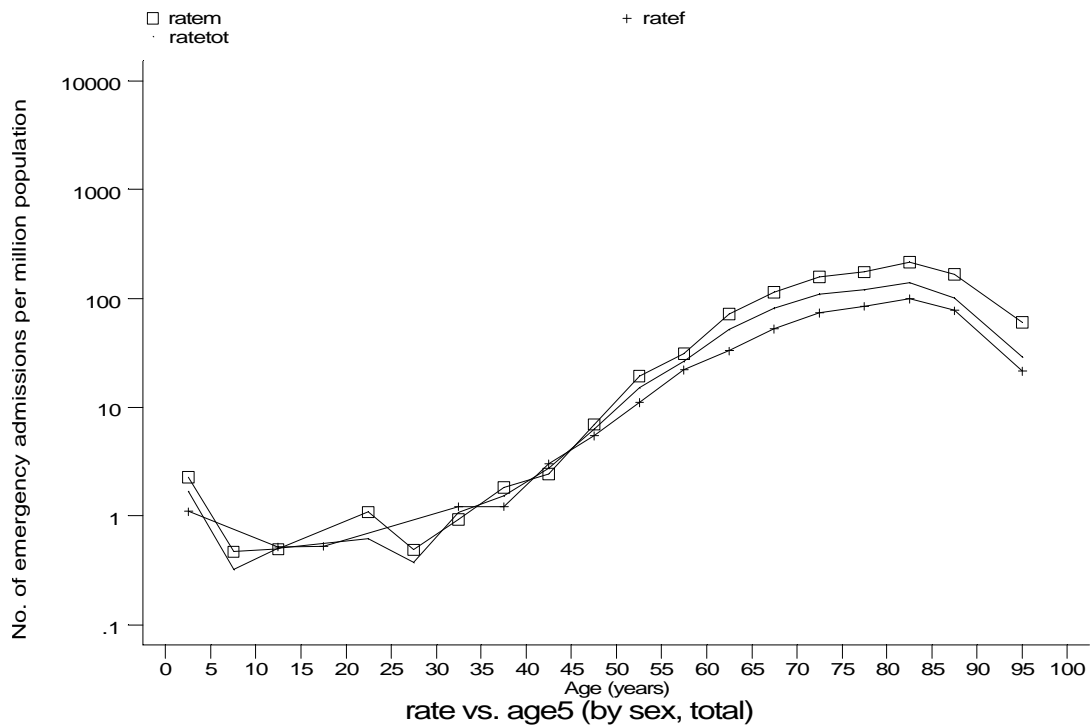


- HES Emergency admissions, England 1991-94



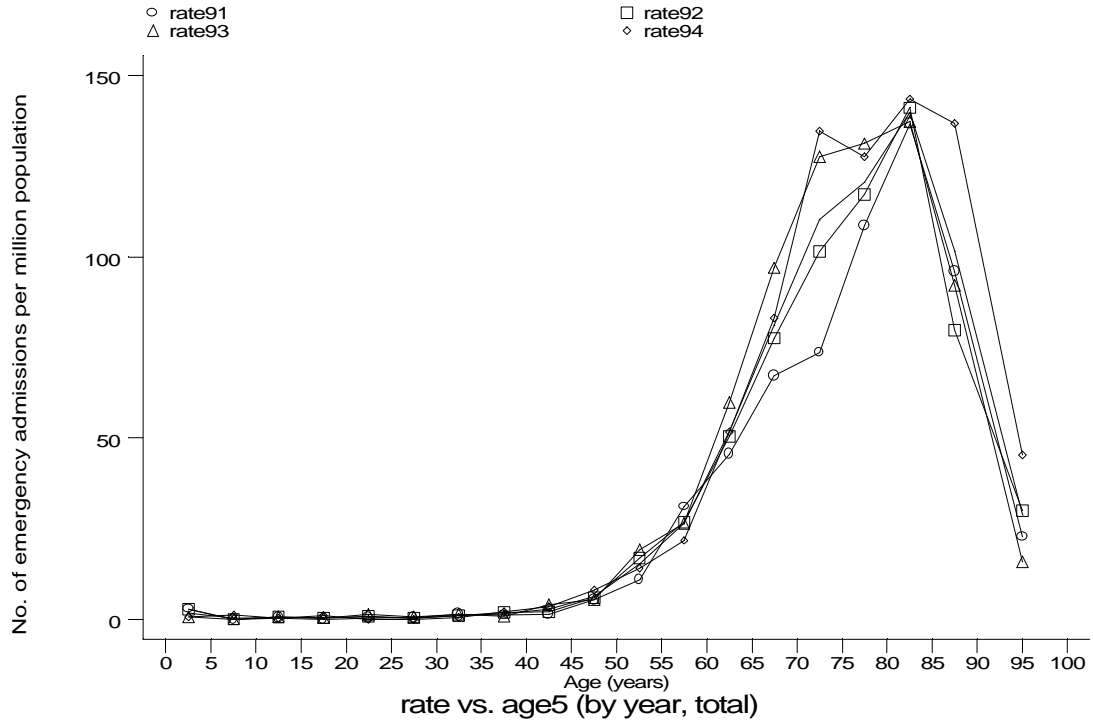
h1e9a1.gph
 9. Idiopathic fibrosing alveolitis



h1e9a2.gph
 9. Idiopathic fibrosing alveolitis

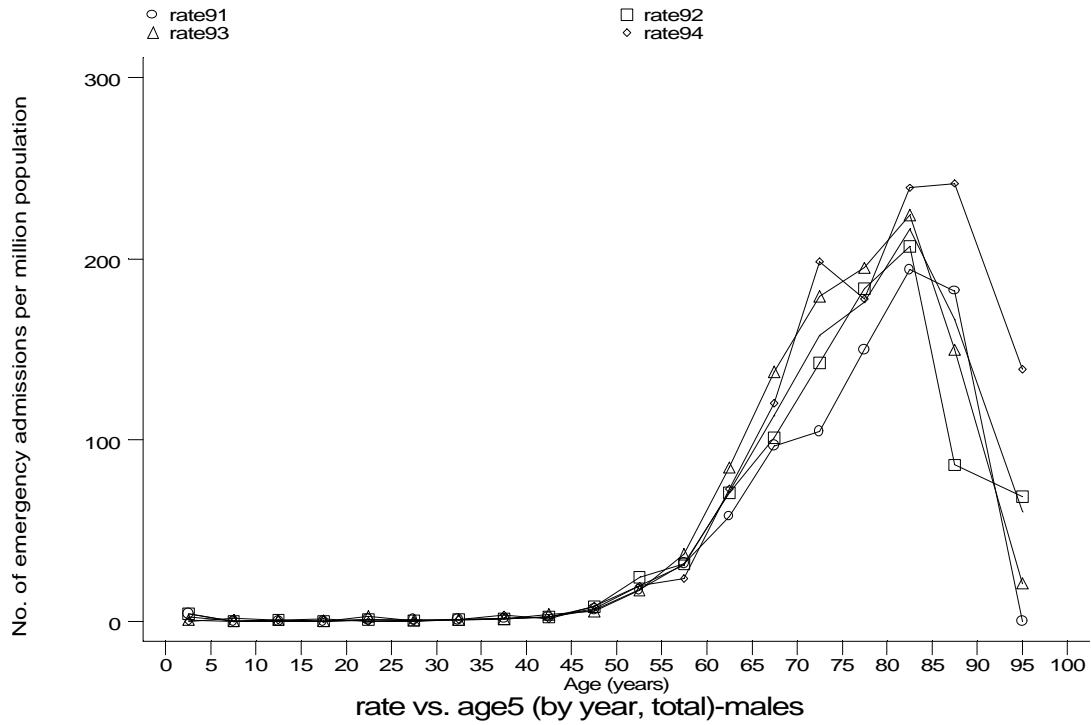
Age-sex distributions, yearly trends and cohort analysis (crude rates)

- HES Emergency admissions, England 1991-94

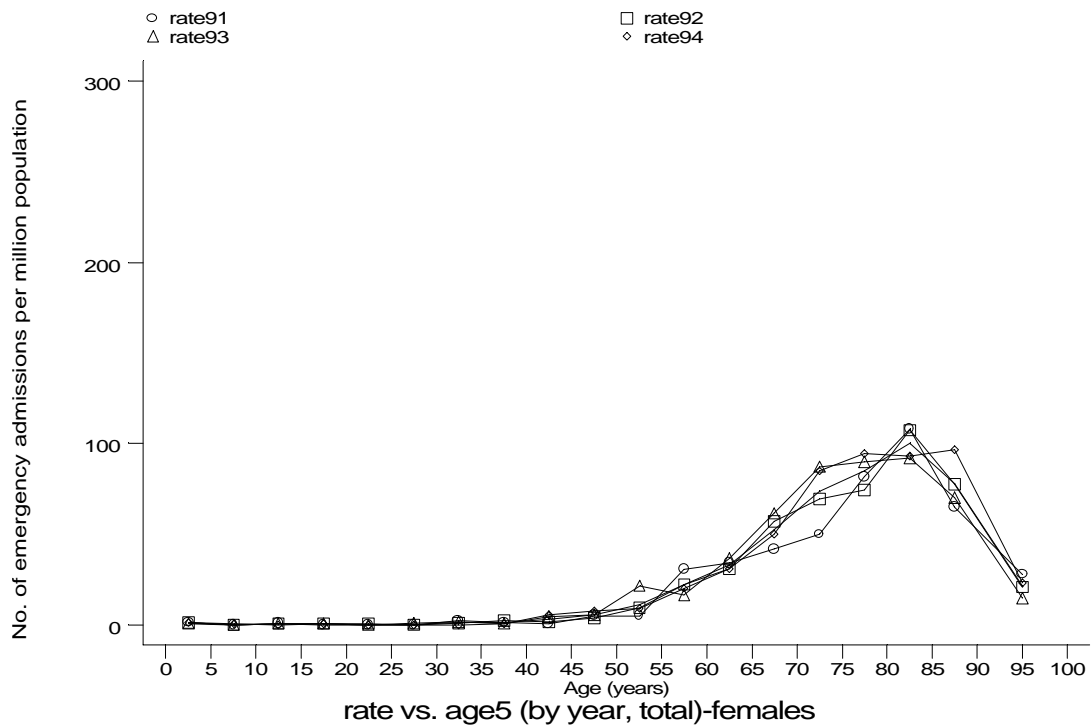


h1e9b1.gph
9. Idiopathic fibrosing alveolitis

- HES Emergency admissions, England 1991-94



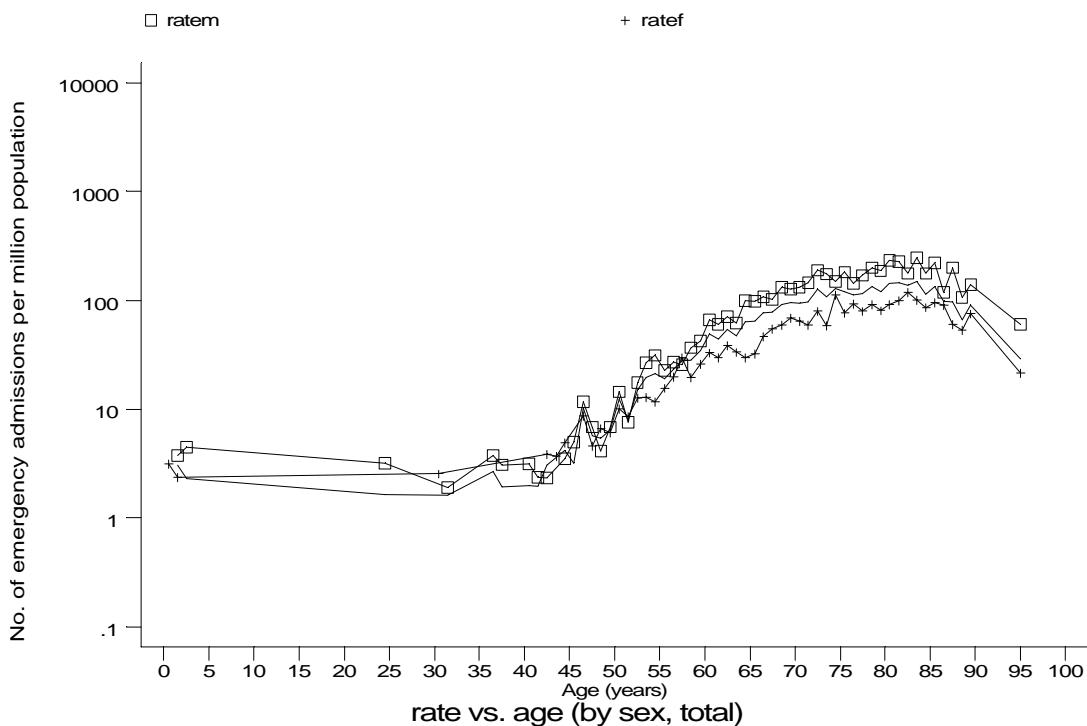
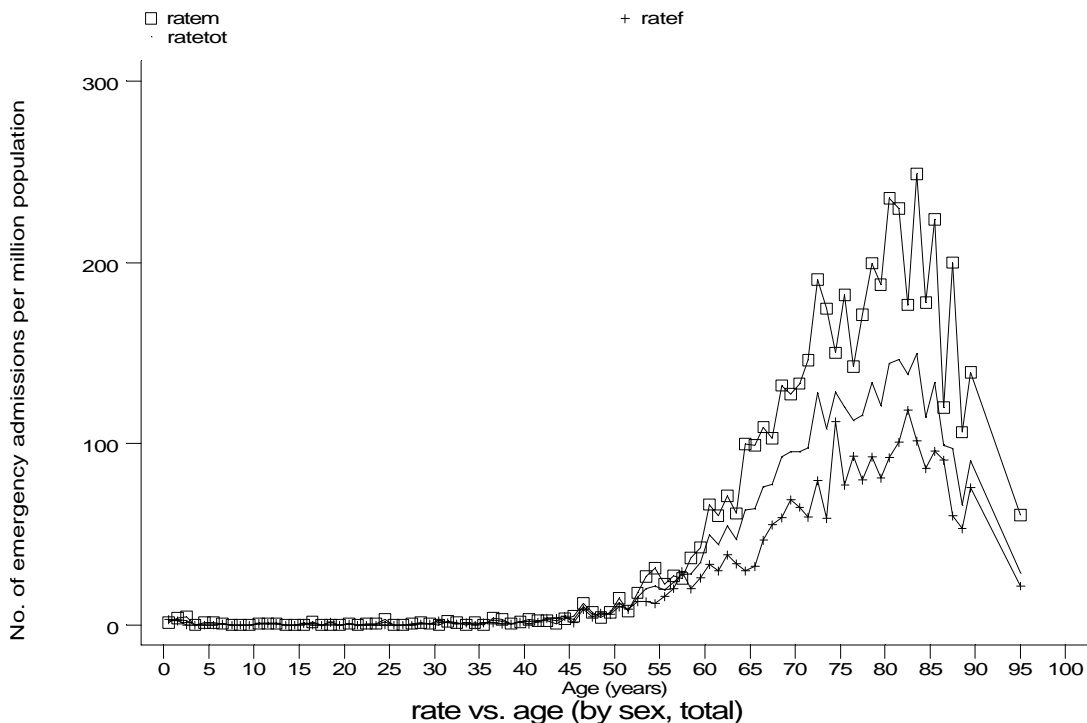
h1e9b1m.gph: MALES
 9. Idiopathic fibrosing alveolitis



h1e9b1f.gph: FEMALES
 9. Idiopathic fibrosing alveolitis

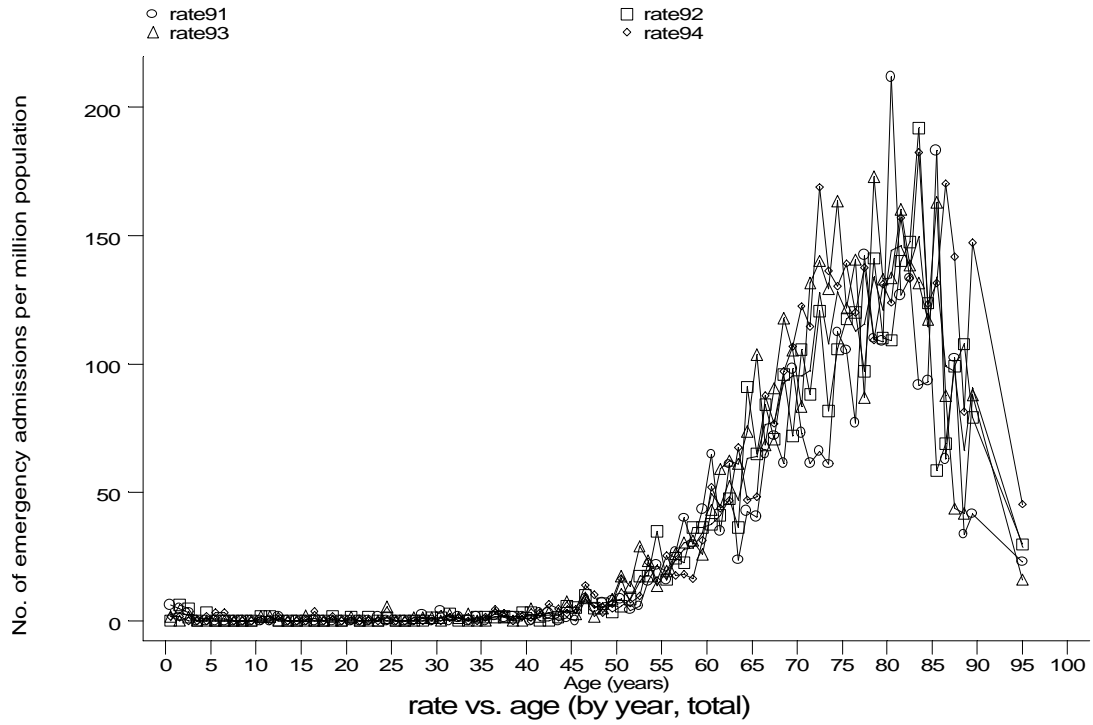
Age-sex distributions, yearly trends and cohort analysis (crude rates)

- HES Emergency admissions, England 1991-94



Age-sex distributions, yearly trends and cohort analysis (crude rates)

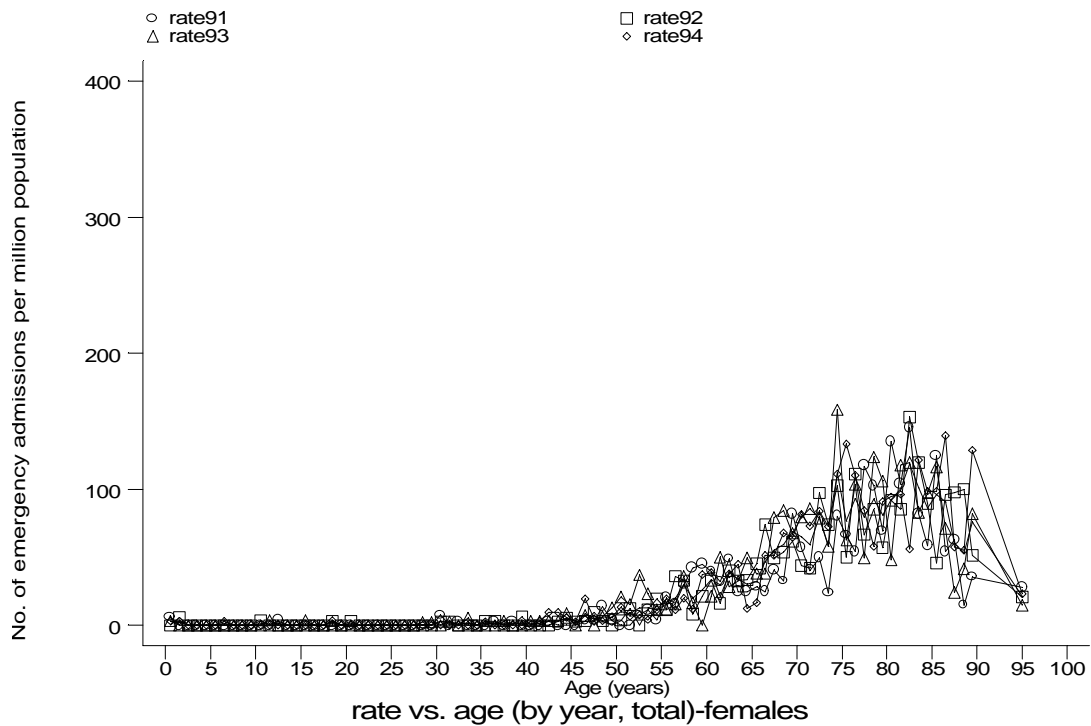
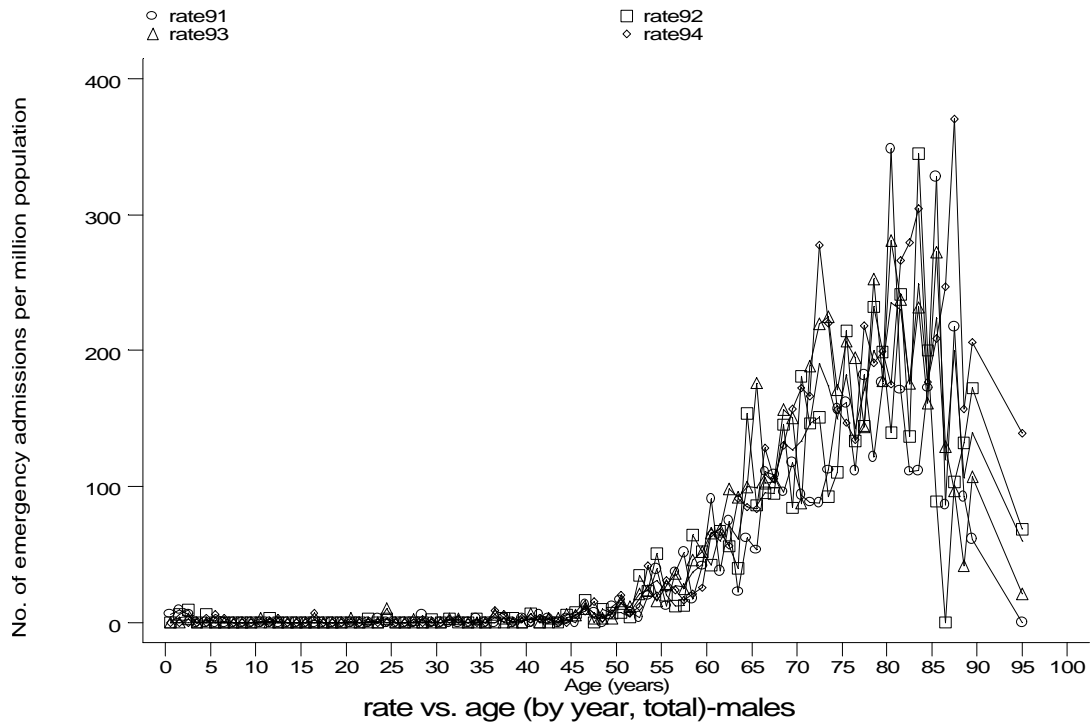
- HES Emergency admissions, England 1991-94



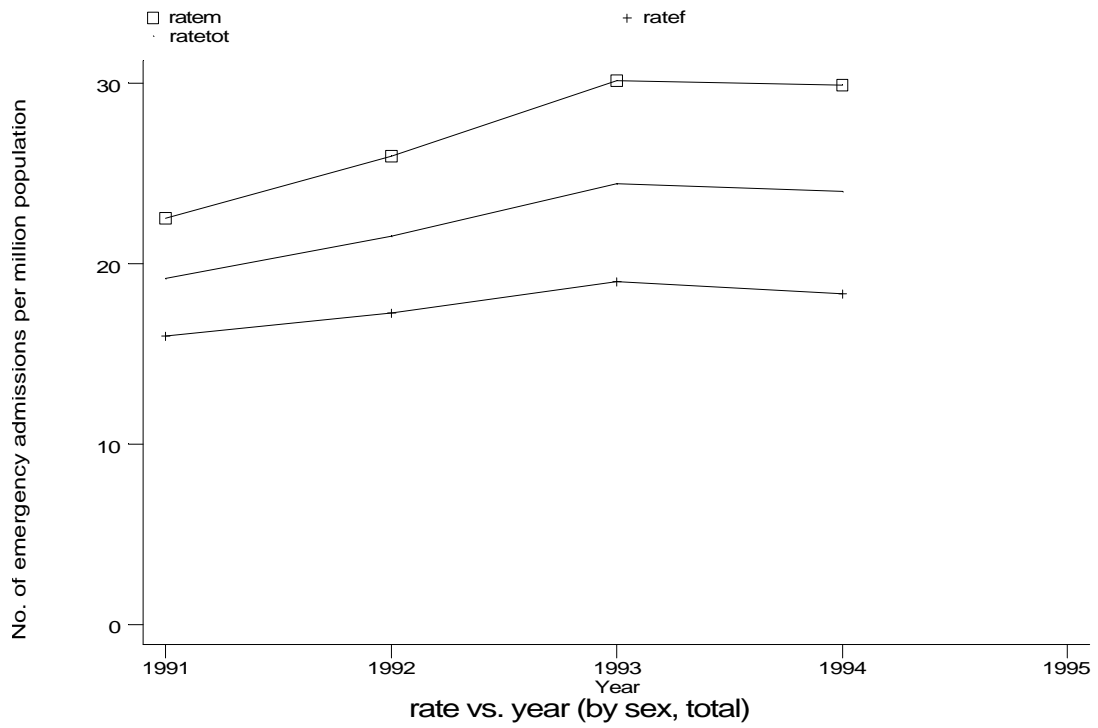
h1e9d1.gph
9. Idiopathic fibrosing alveolitis

Age-sex distributions, yearly trends and cohort analysis (crude rates)

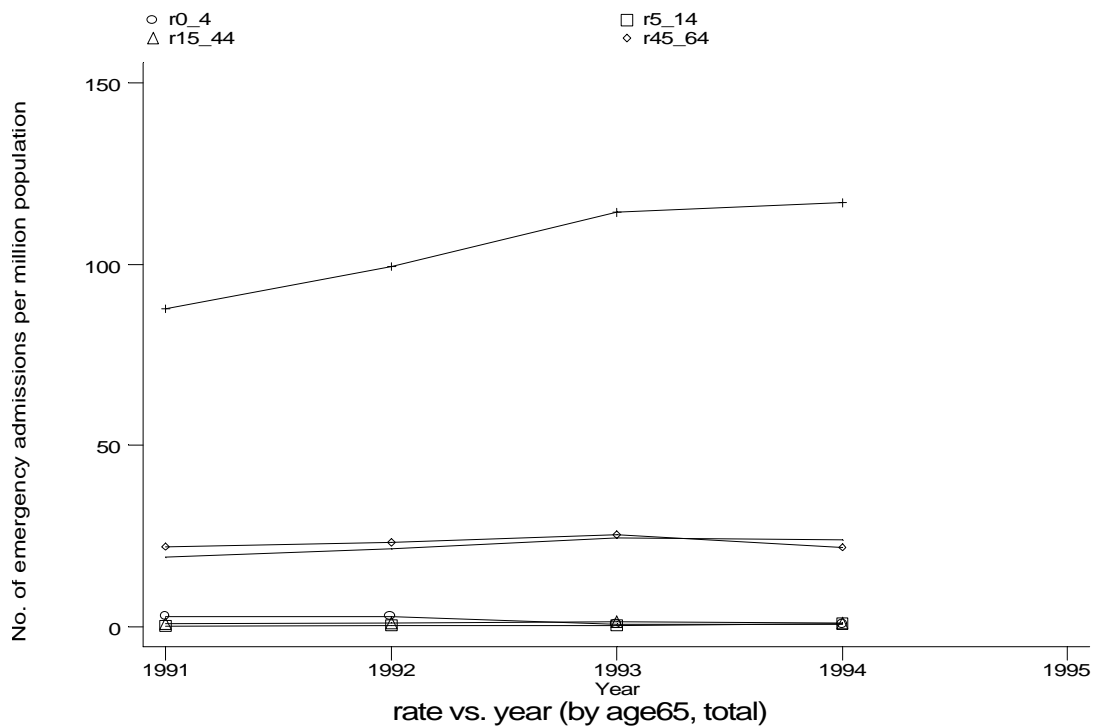
- HES Emergency admissions, England 1991-94



- HES Emergency admissions, England 1991-94



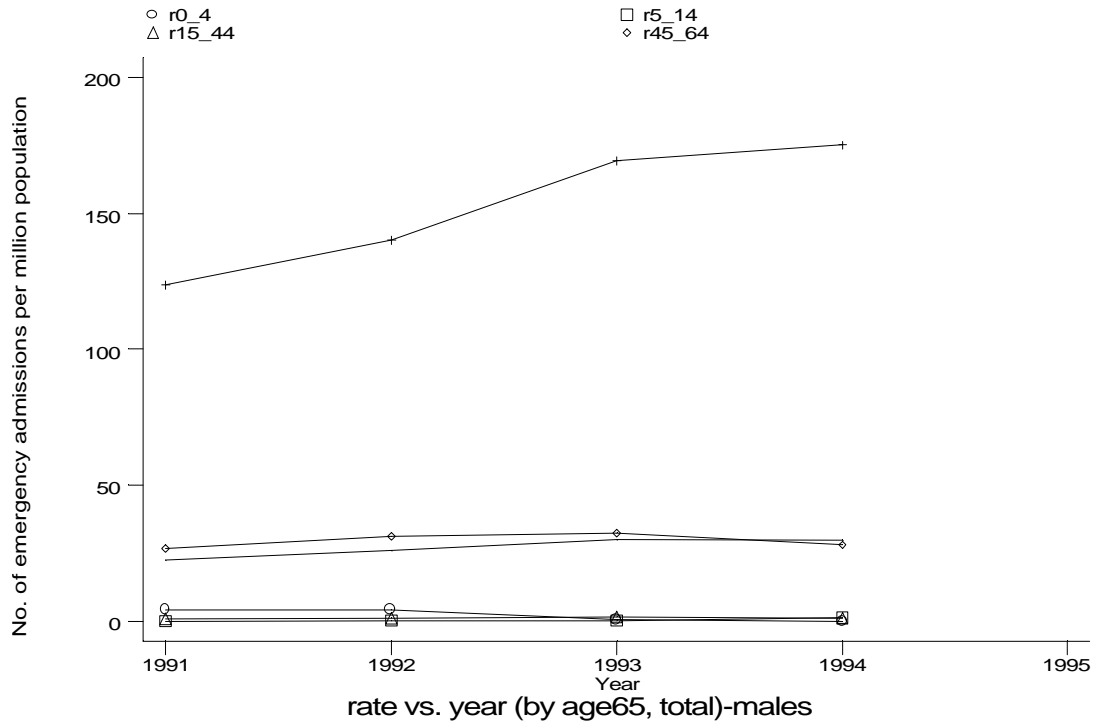
h1e9e.gph
 9. Idiopathic fibrosing alveolitis



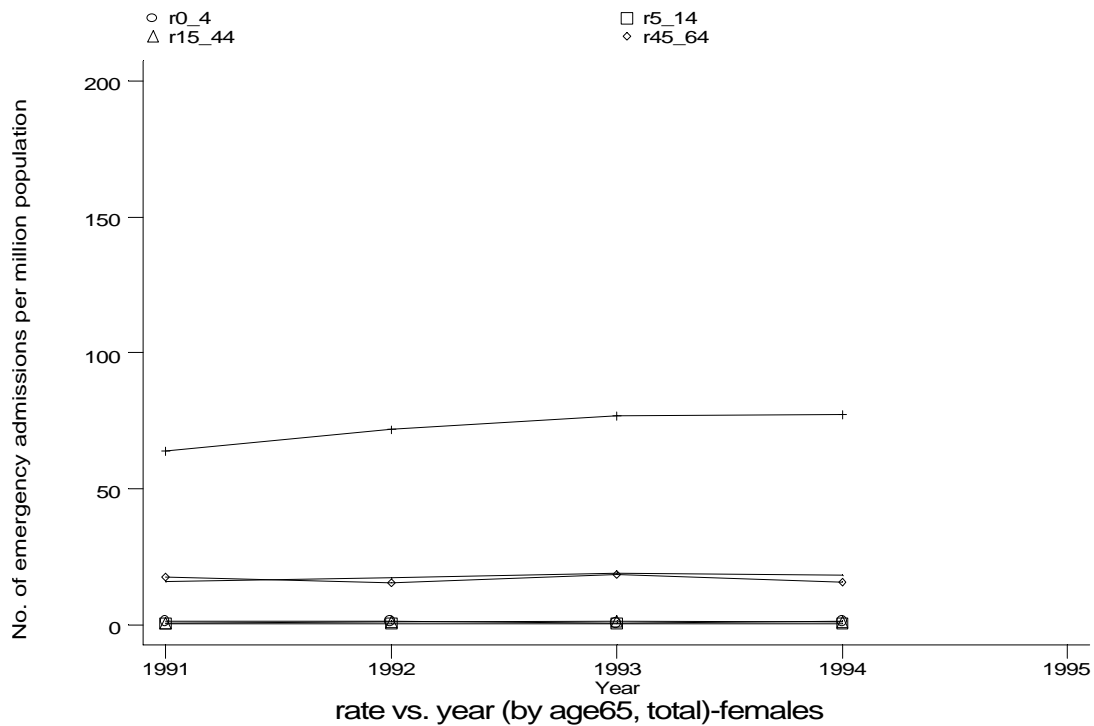
h1e9f.gph
 9. Idiopathic fibrosing alveolitis

Age-sex distributions, yearly trends and cohort analysis (crude rates)

- HES Emergency admissions, England 1991-94



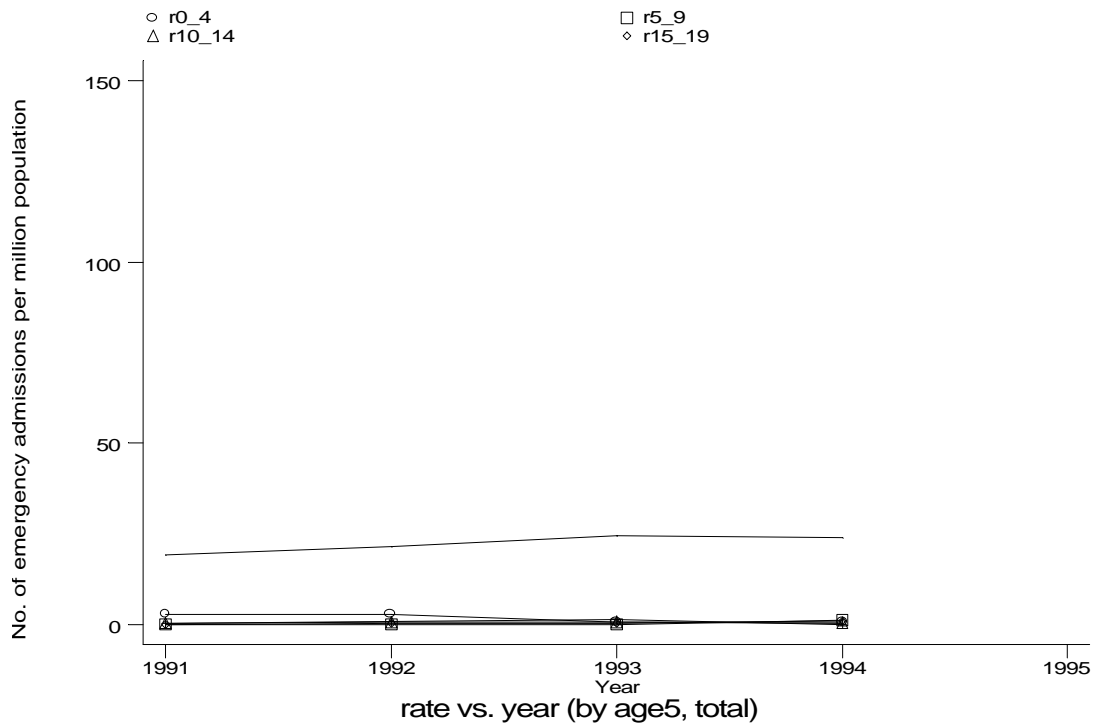
h1e9fm.gph: MALES
9. Idiopathic fibrosing alveolitis



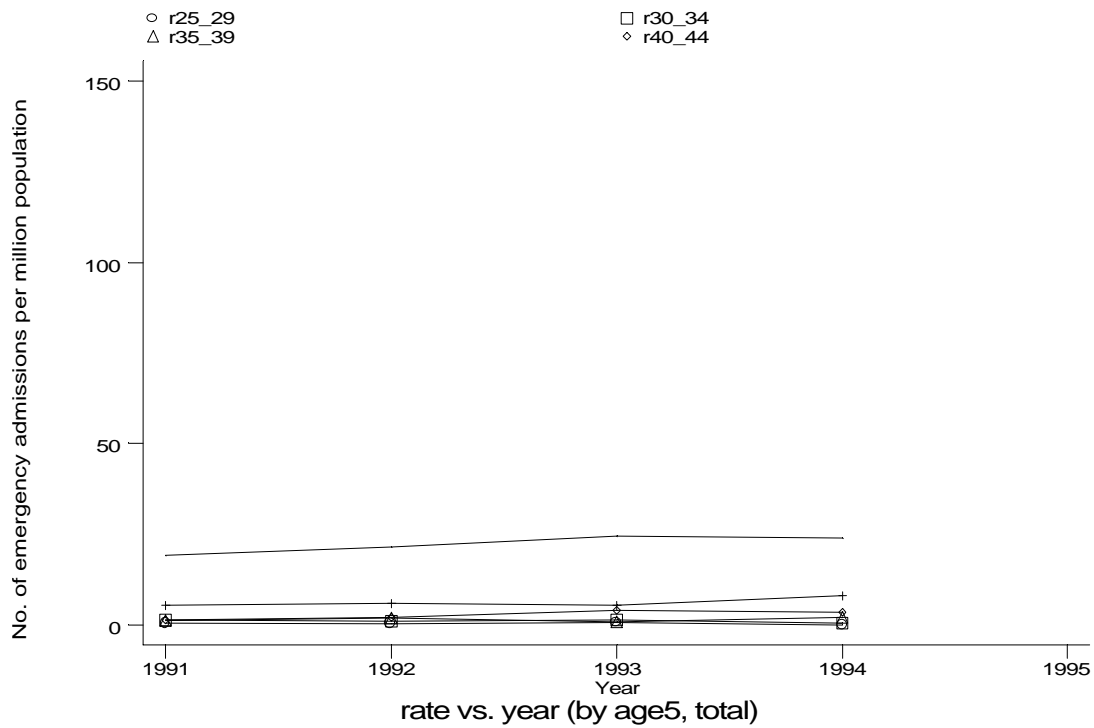
h1e9ff.gph: FEMALES
9. Idiopathic fibrosing alveolitis

Age-sex distributions, yearly trends and cohort analysis (crude rates)

- HES Emergency admissions, England 1991-94



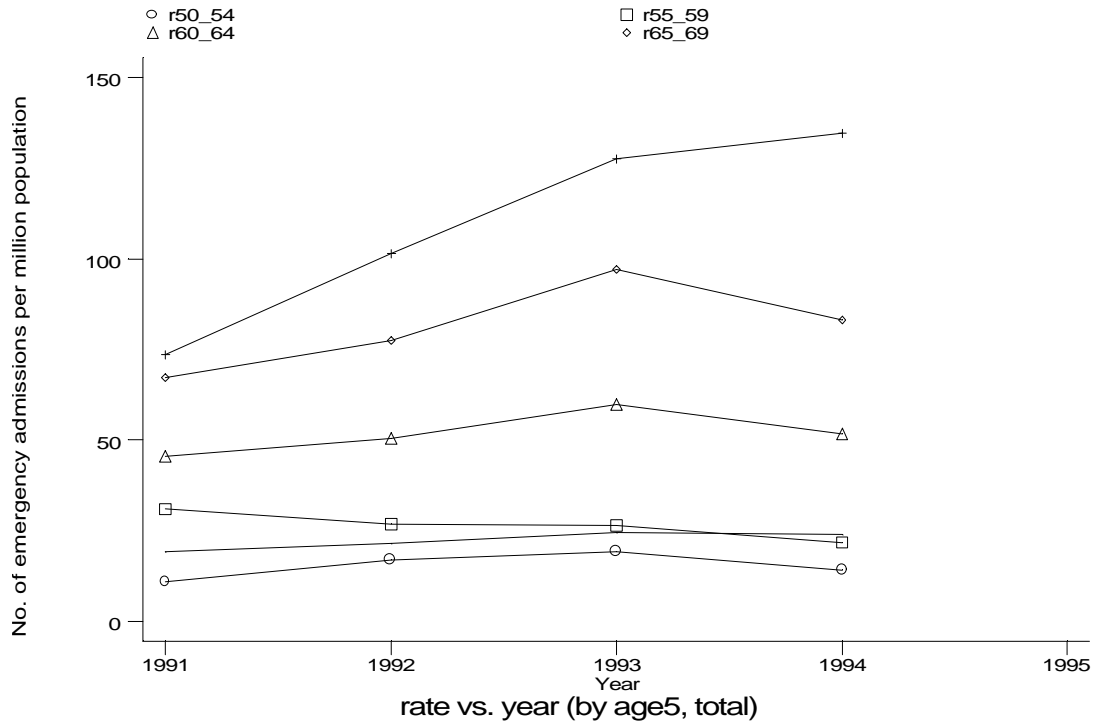
h1e9g1.gph
9. Idiopathic fibrosing alveolitis



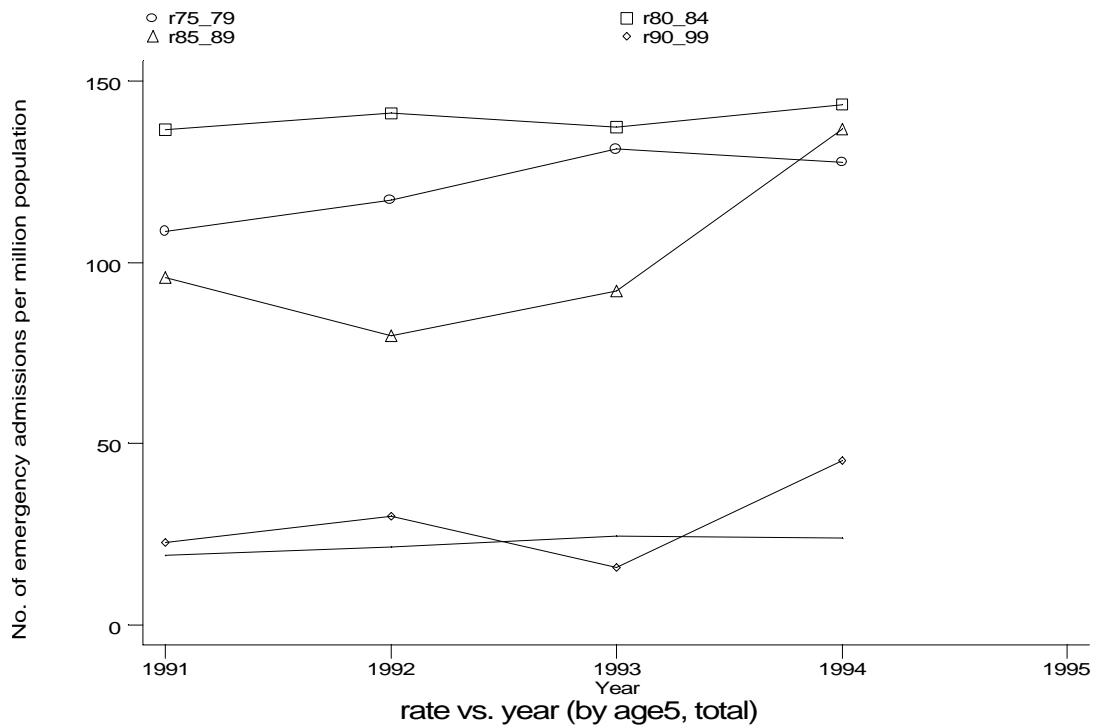
h1e9g2.gph
9. Idiopathic fibrosing alveolitis

Age-sex distributions, yearly trends and cohort analysis (crude rates)

- HES Emergency admissions, England 1991-94



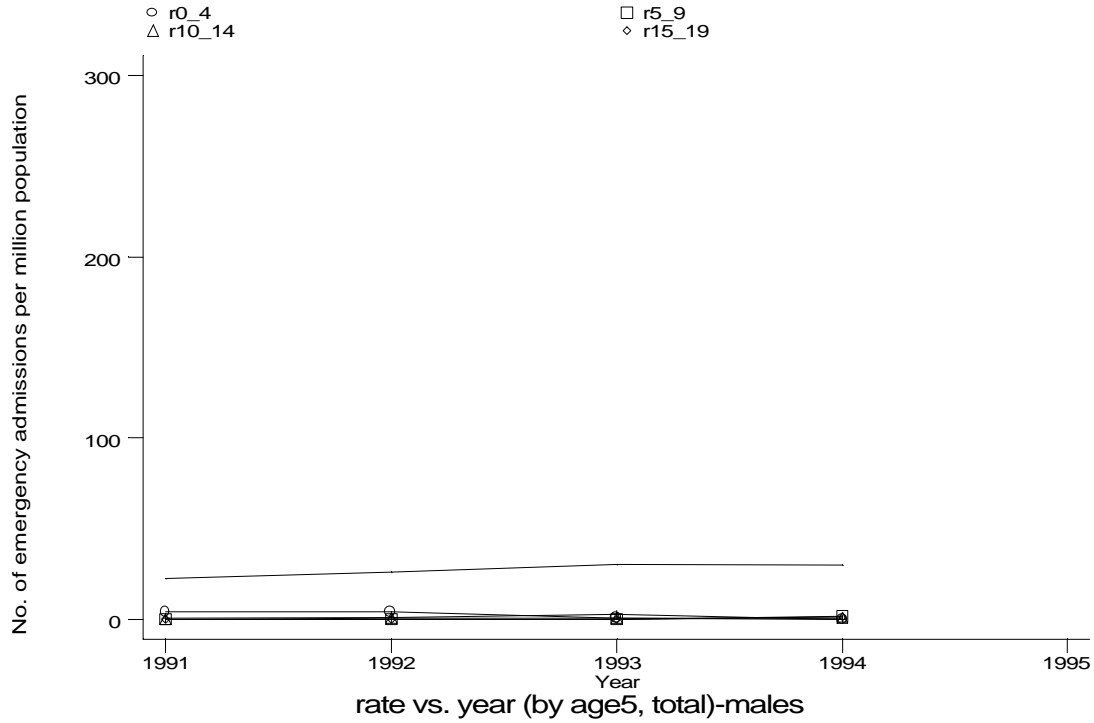
h1e9g3.gph
9. Idiopathic fibrosing alveolitis



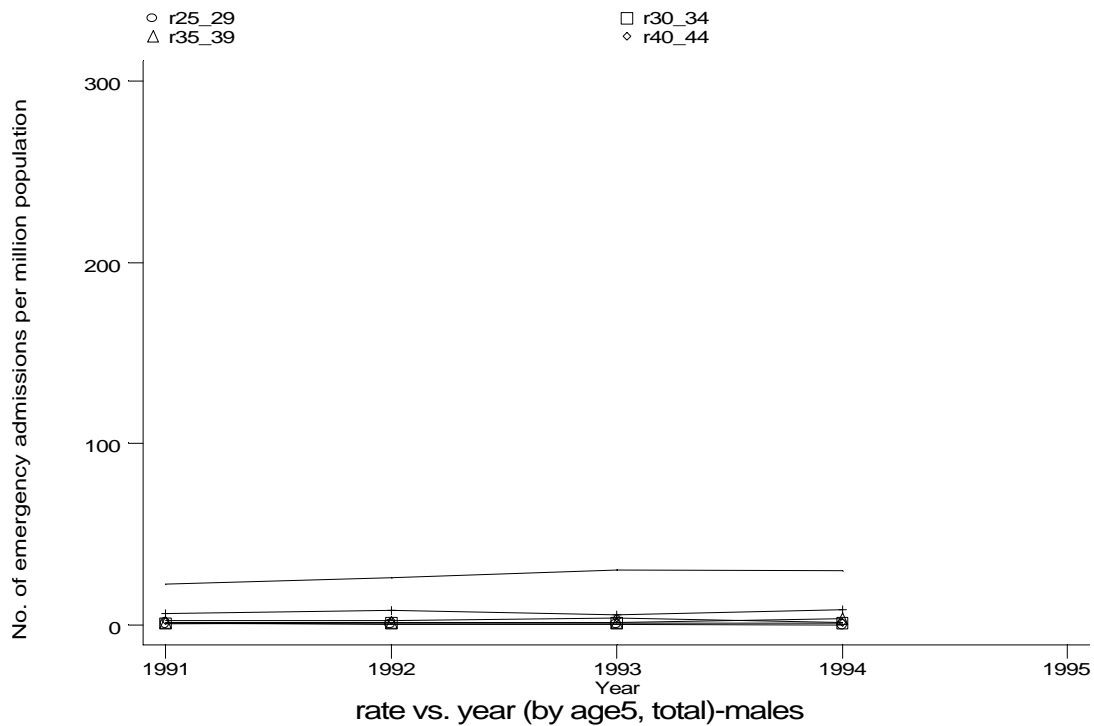
h1e9g4.gph
9. Idiopathic fibrosing alveolitis

Age-sex distributions, yearly trends and cohort analysis (crude rates)

- HES Emergency admissions, England 1991-94



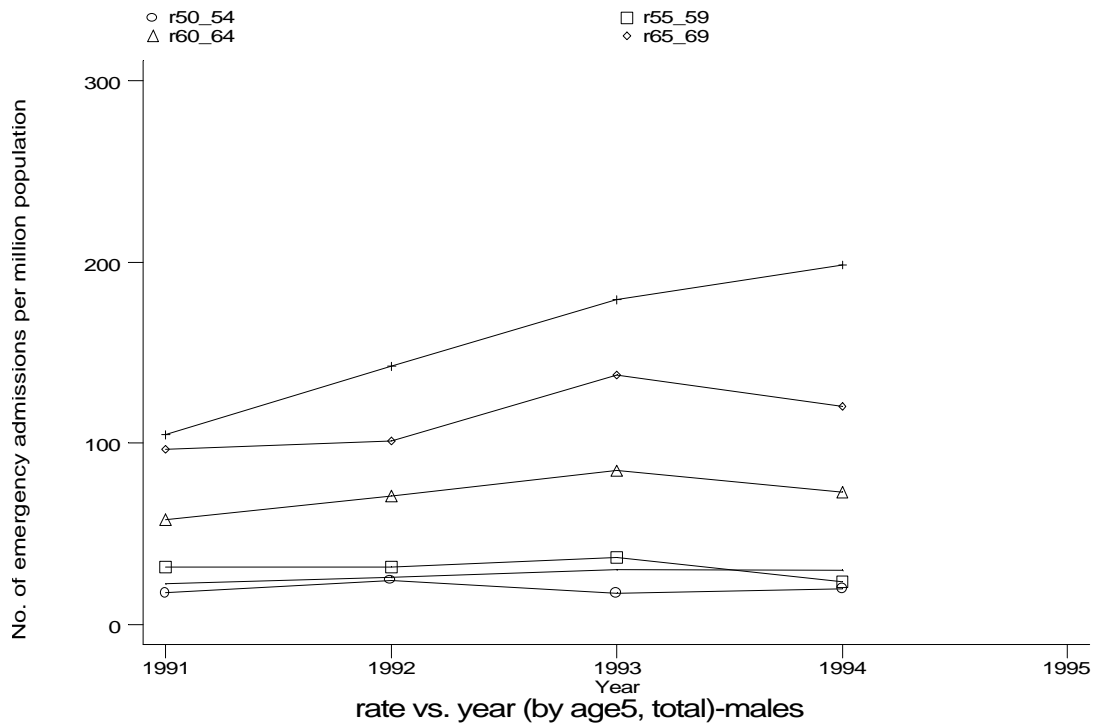
h1e9g1m.gph: MALES
9. Idiopathic fibrosing alveolitis



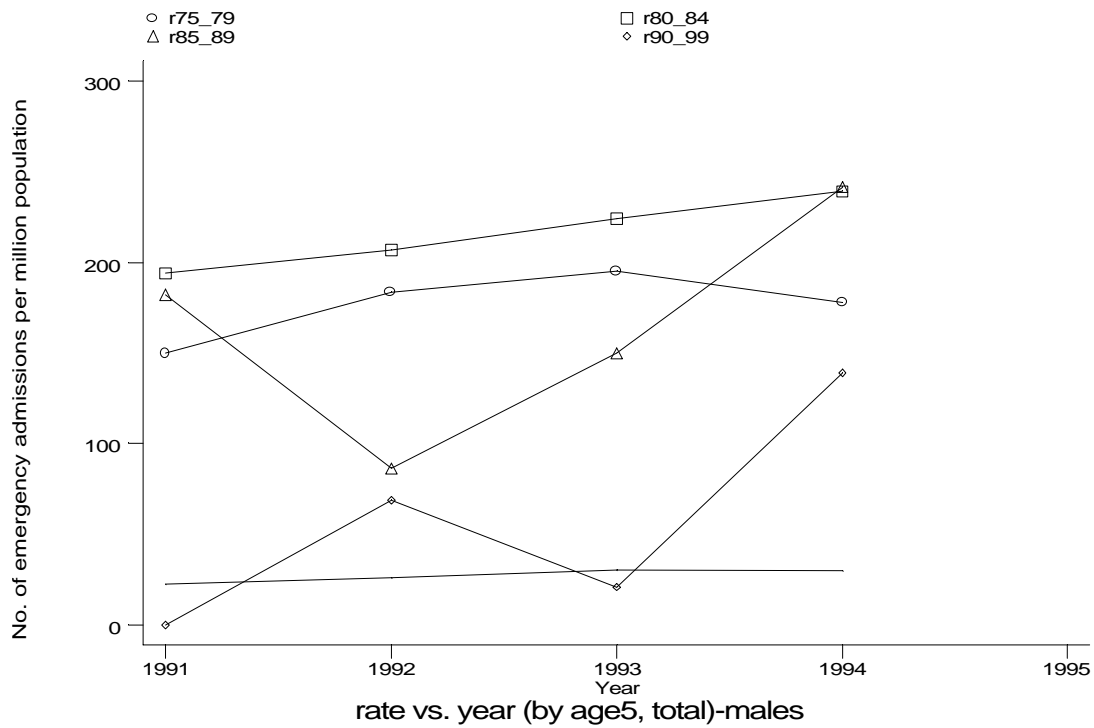
h1e9g2m.gph: MALES
9. Idiopathic fibrosing alveolitis

Age-sex distributions, yearly trends and cohort analysis (crude rates)

- HES Emergency admissions, England 1991-94

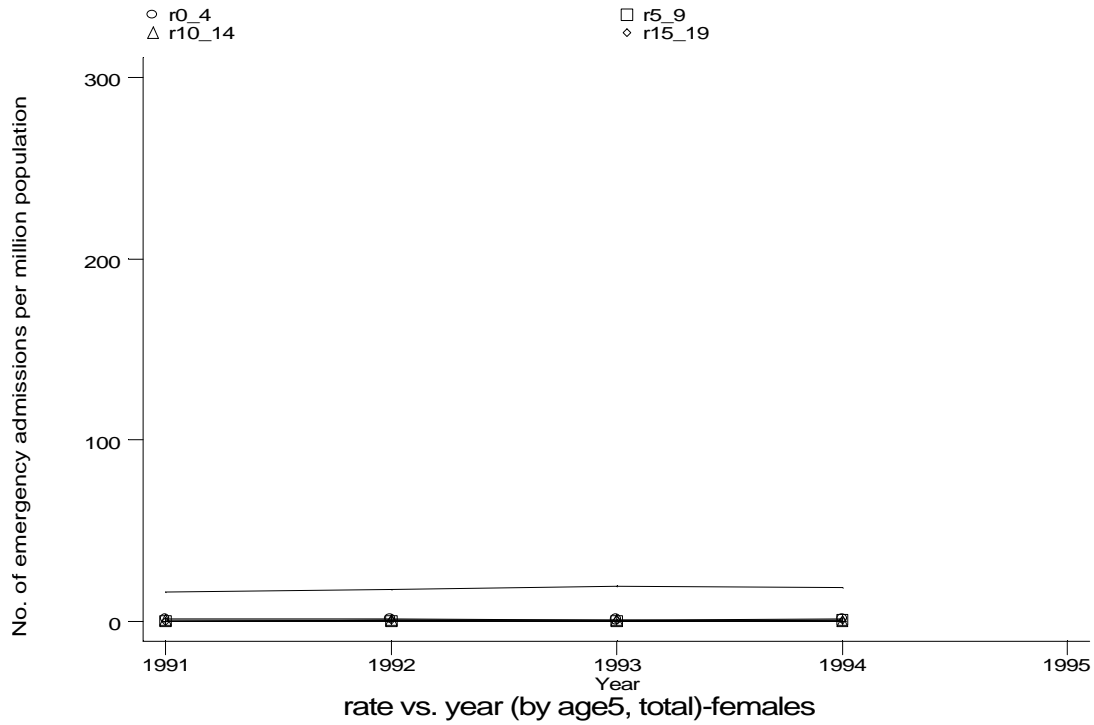


h1e9g3m.gph: MALES
9. Idiopathic fibrosing alveolitis

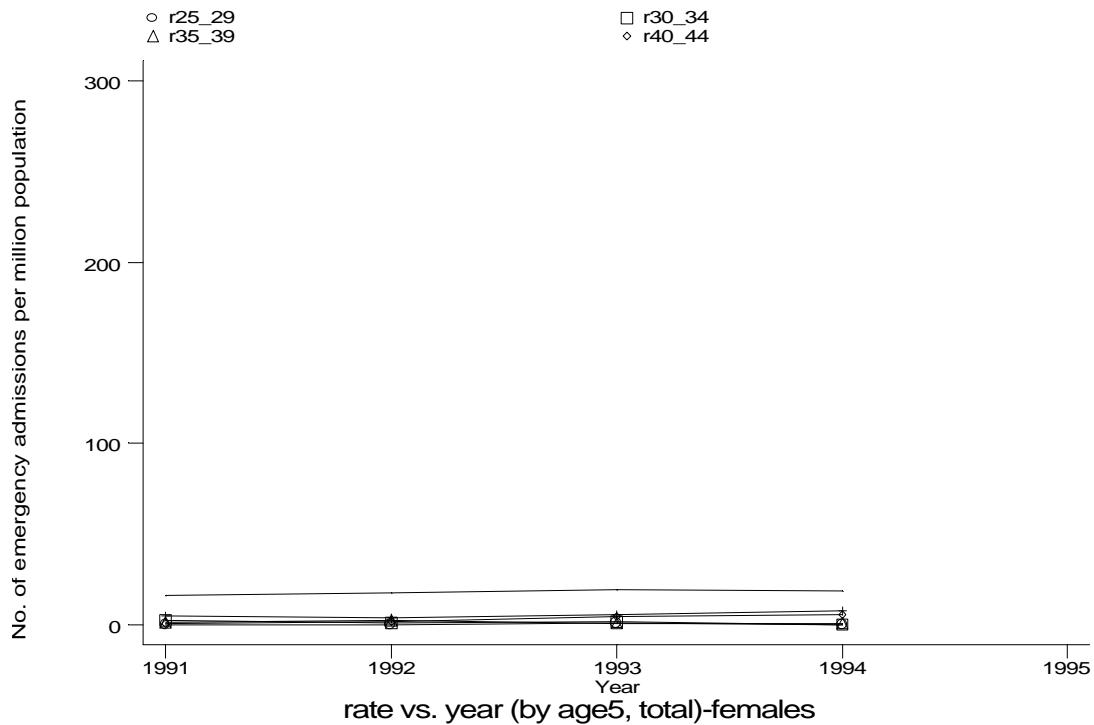


h1e9g4m.gph: MALES
9. Idiopathic fibrosing alveolitis

- HES Emergency admissions, England 1991-94



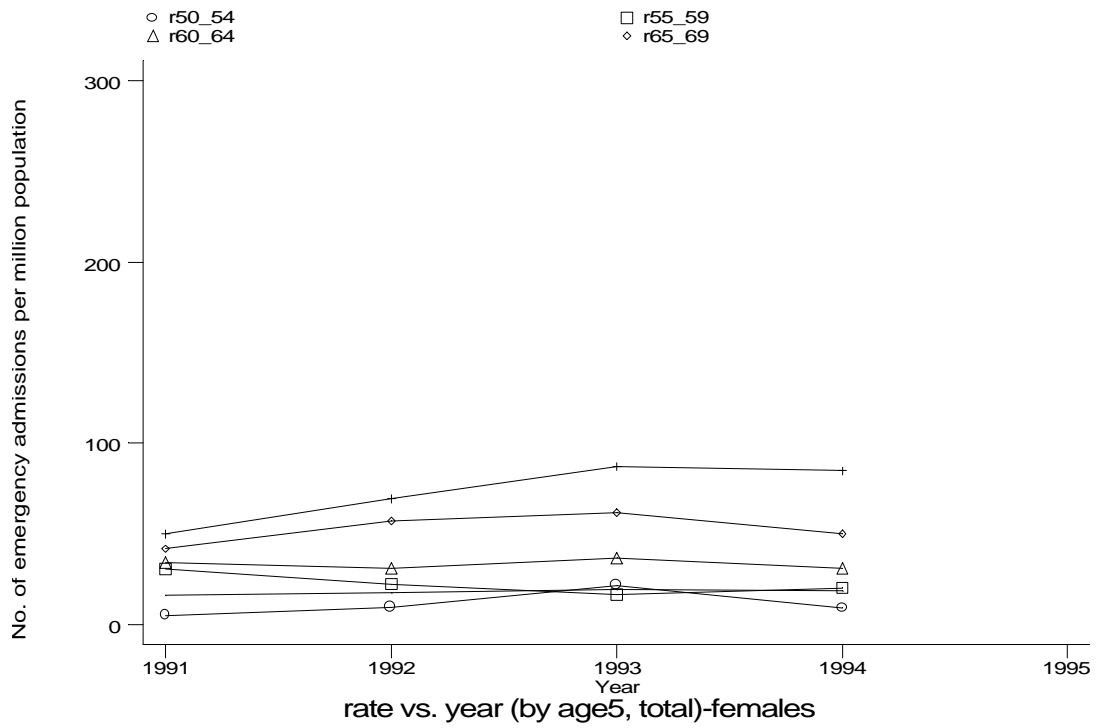
h1e9g1f.gph: FEMALES
 9. Idiopathic fibrosing alveolitis



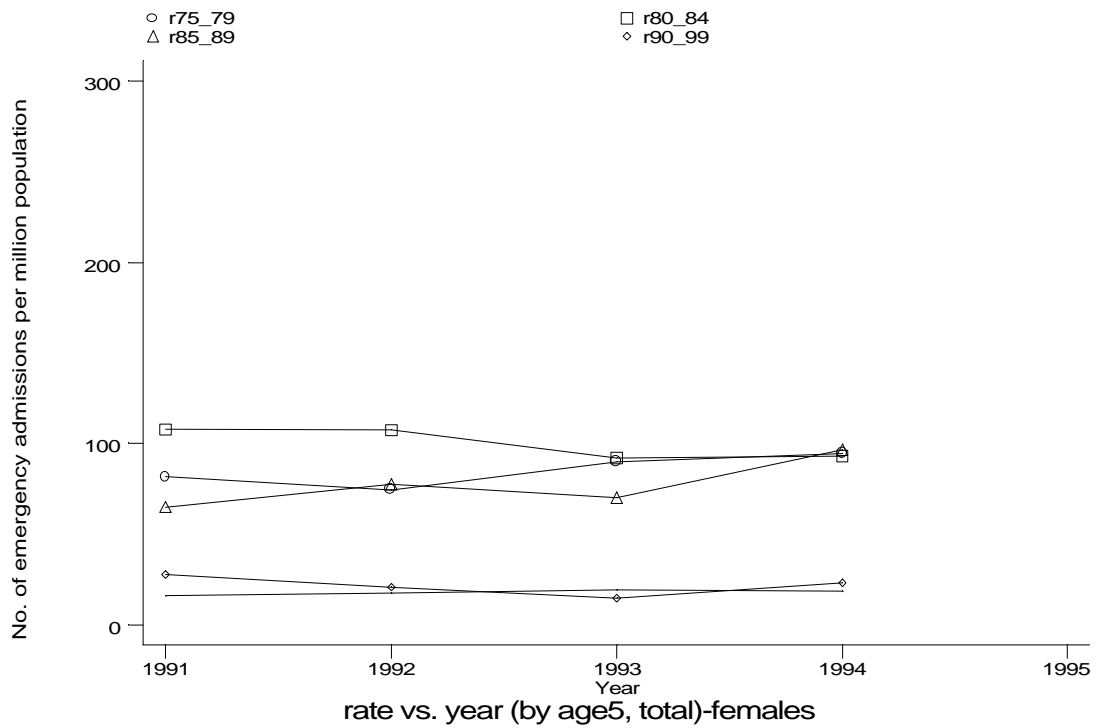
h1e9g2f.gph: FEMALES
 9. Idiopathic fibrosing alveolitis

Age-sex distributions, yearly trends and cohort analysis (crude rates)

- HES Emergency admissions, England 1991-94



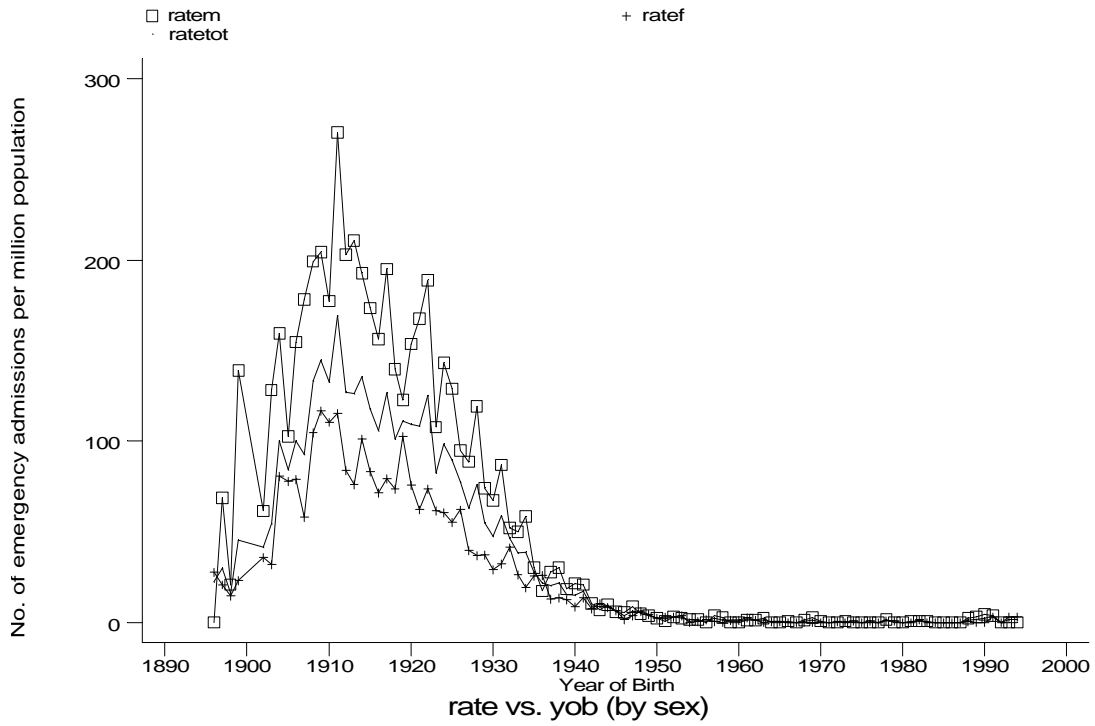
h1e9g3f.gph: FEMALES
9. Idiopathic fibrosing alveolitis



h1e9g4f.gph: FEMALES
9. Idiopathic fibrosing alveolitis

Age-sex distributions, yearly trends and cohort analysis (crude rates)

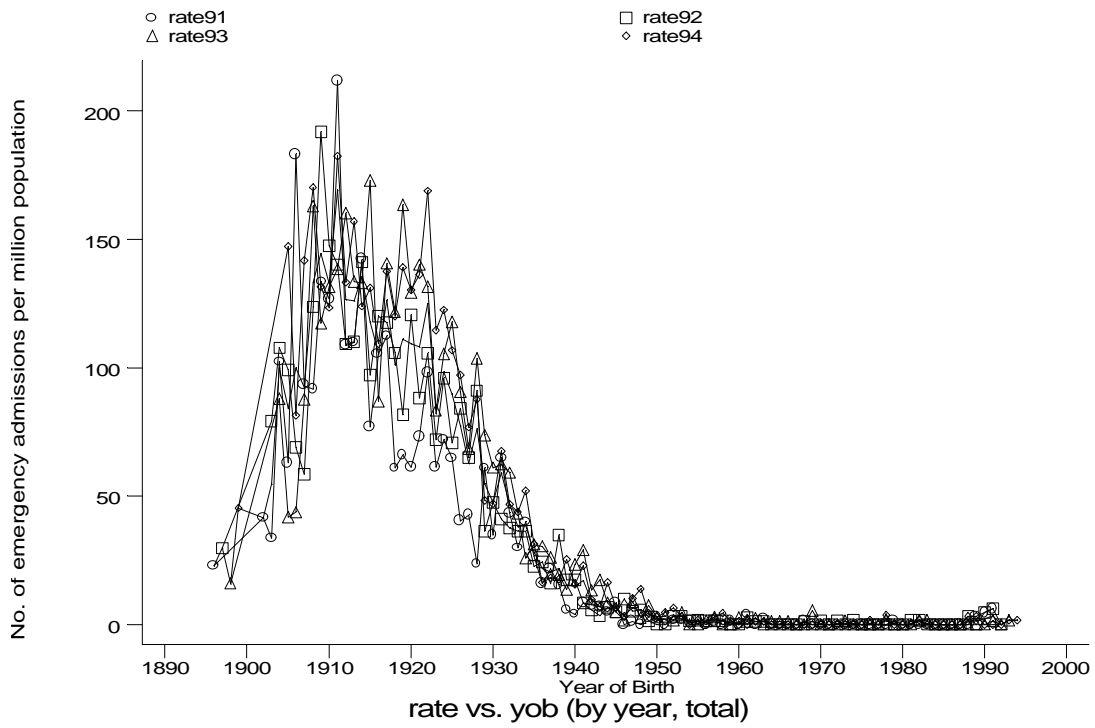
- HES Emergency admissions, England 1991-94



h1e9h.gph
9. Idiopathic fibrosing alveolitis

Age-sex distributions, yearly trends and cohort analysis (crude rates)

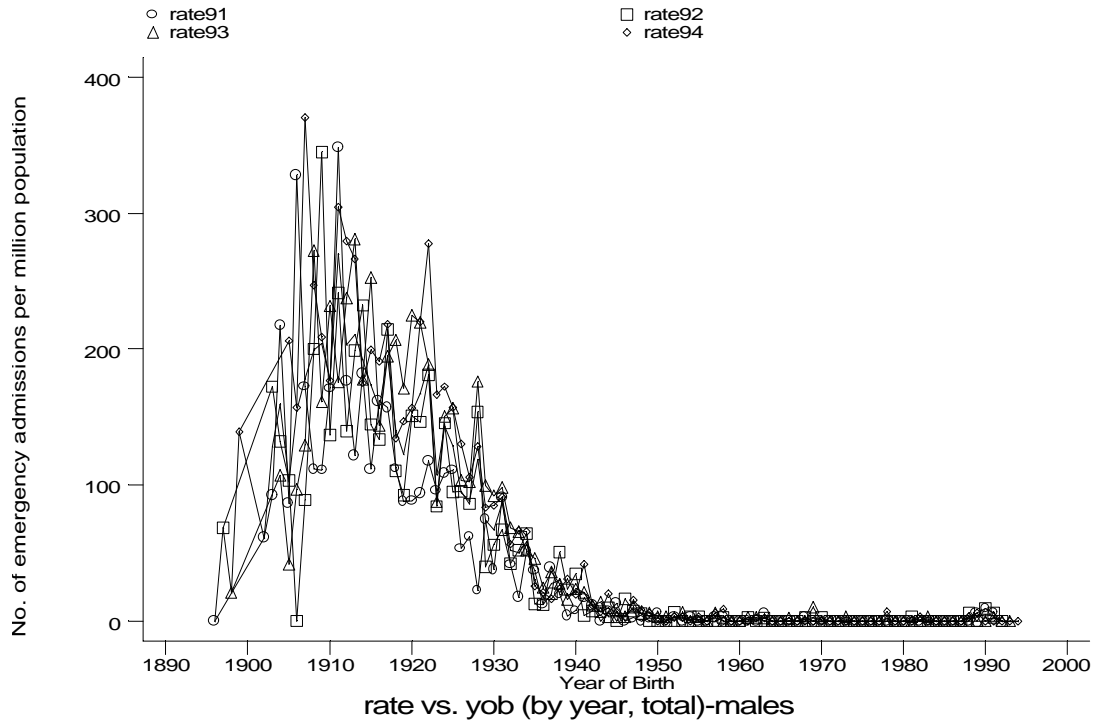
- HES Emergency admissions, England 1991-94



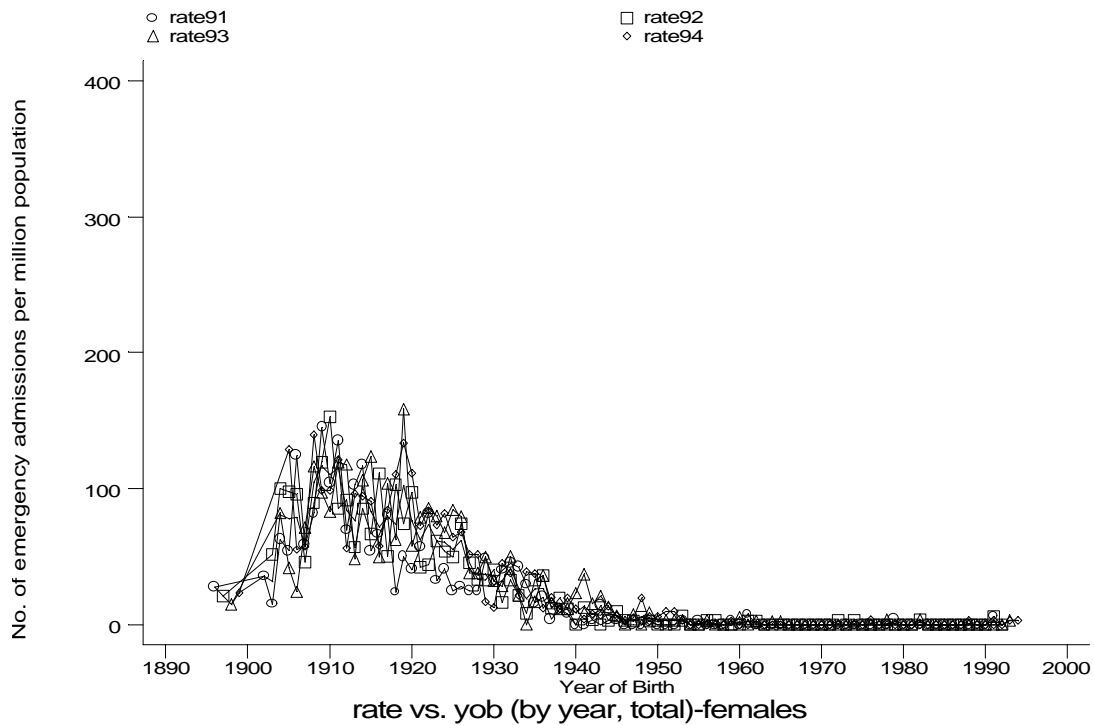
h1e9i1.gph
9. Idiopathic fibrosing alveolitis

Age-sex distributions, yearly trends and cohort analysis (crude rates)

- HES Emergency admissions, England 1991-94

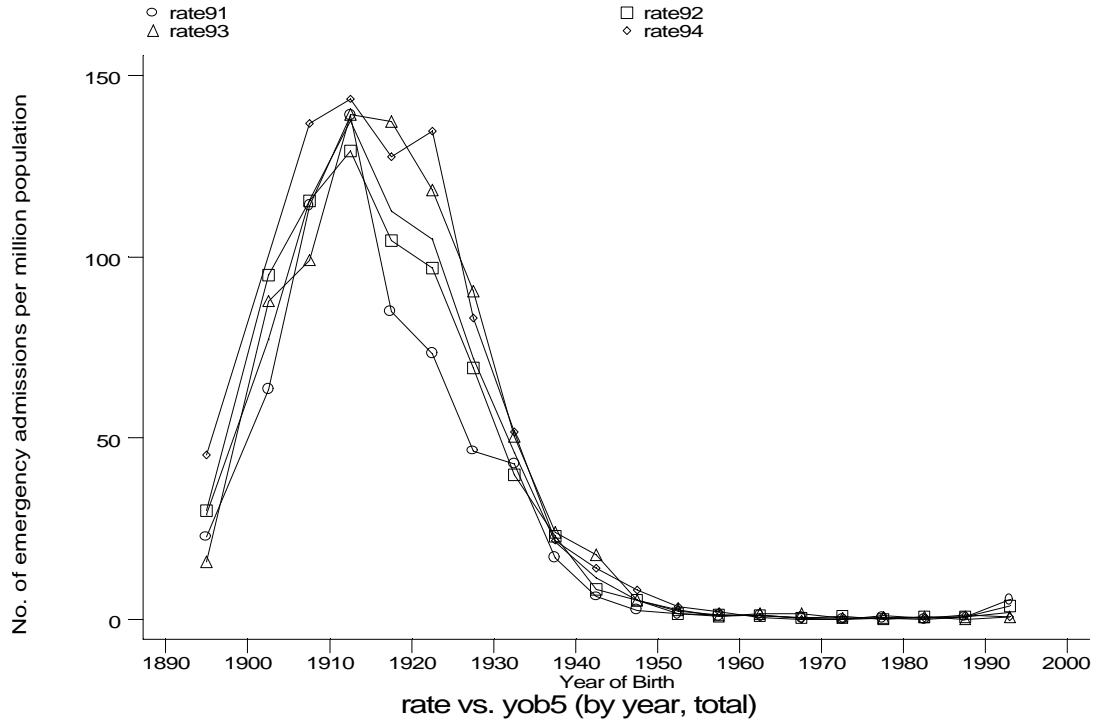


h1e91m.gph: MALES
9. Idiopathic fibrosing alveolitis

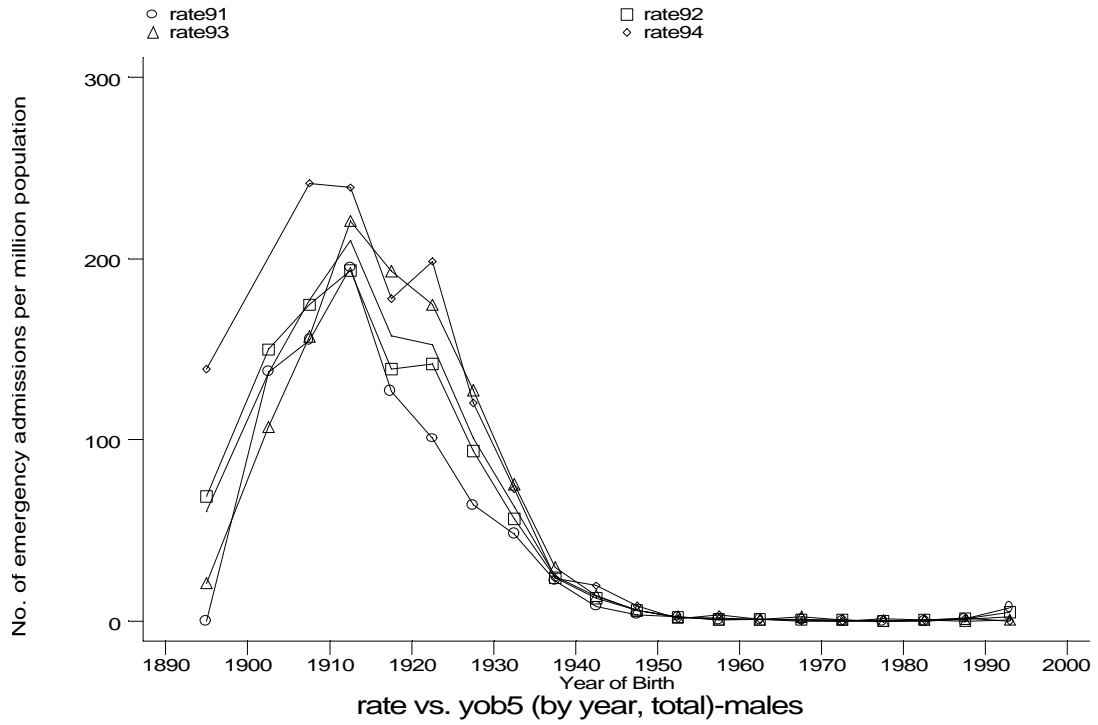


h1e91f.gph: FEMALES
9. Idiopathic fibrosing alveolitis

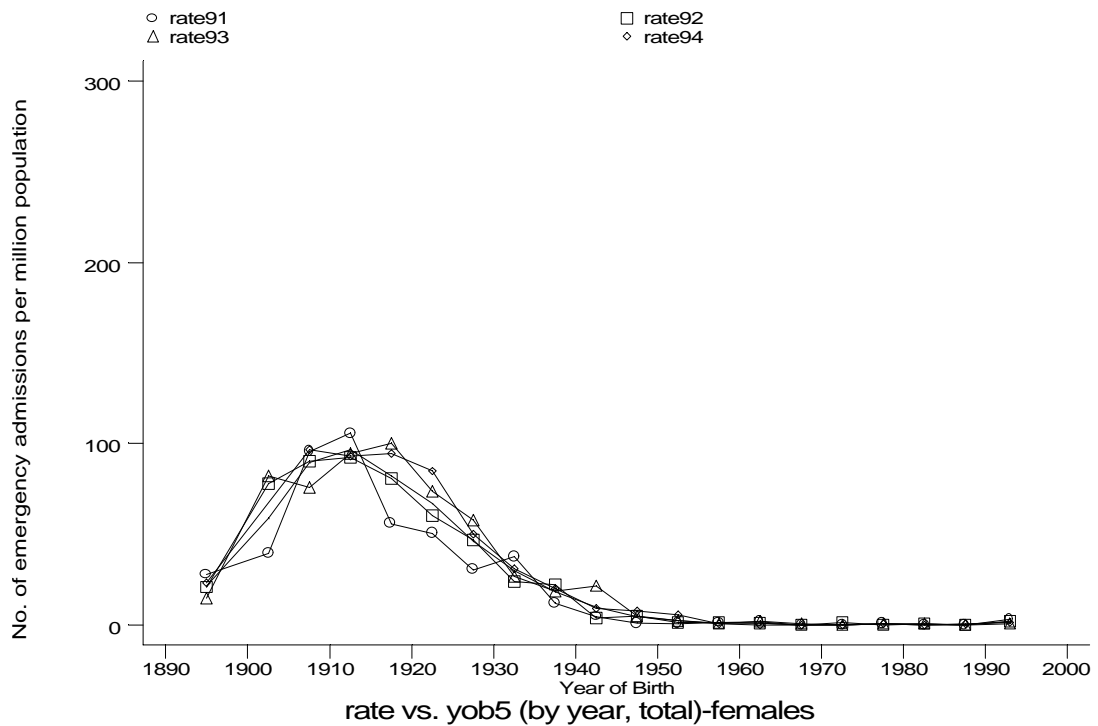
- HES Emergency admissions, England 1991-94



- HES Emergency admissions, England 1991-94



h1e91m.gph: MALES
 9. Idiopathic fibrosing alveolitis



h1e91f.gph: FEMALES
 9. Idiopathic fibrosing alveolitis