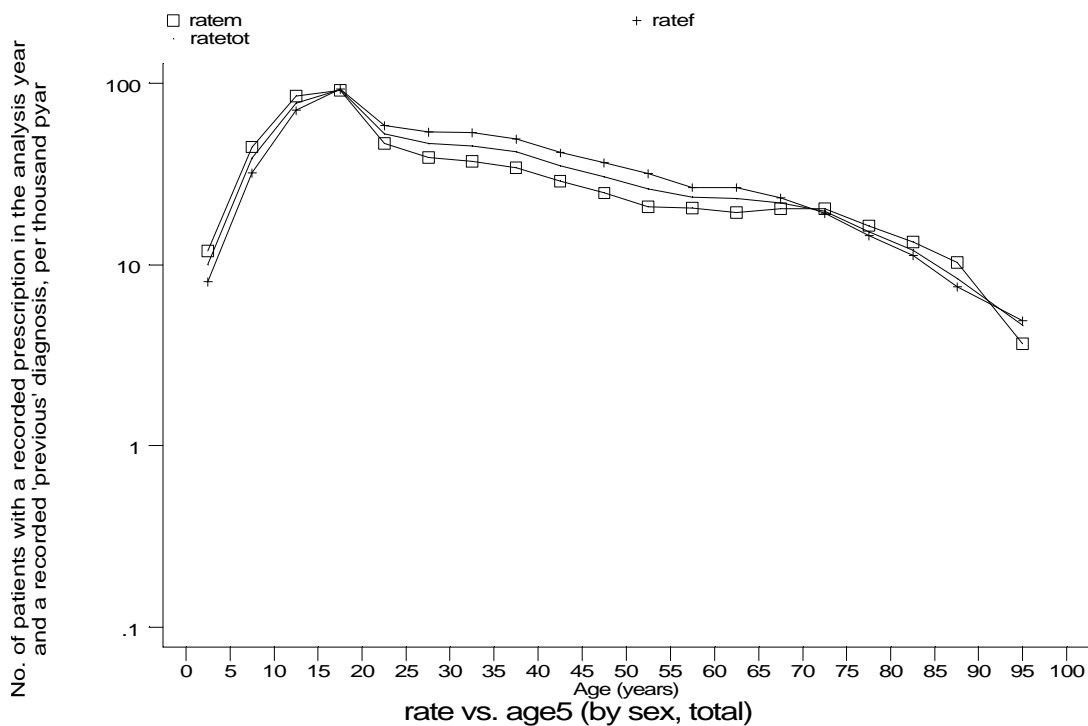
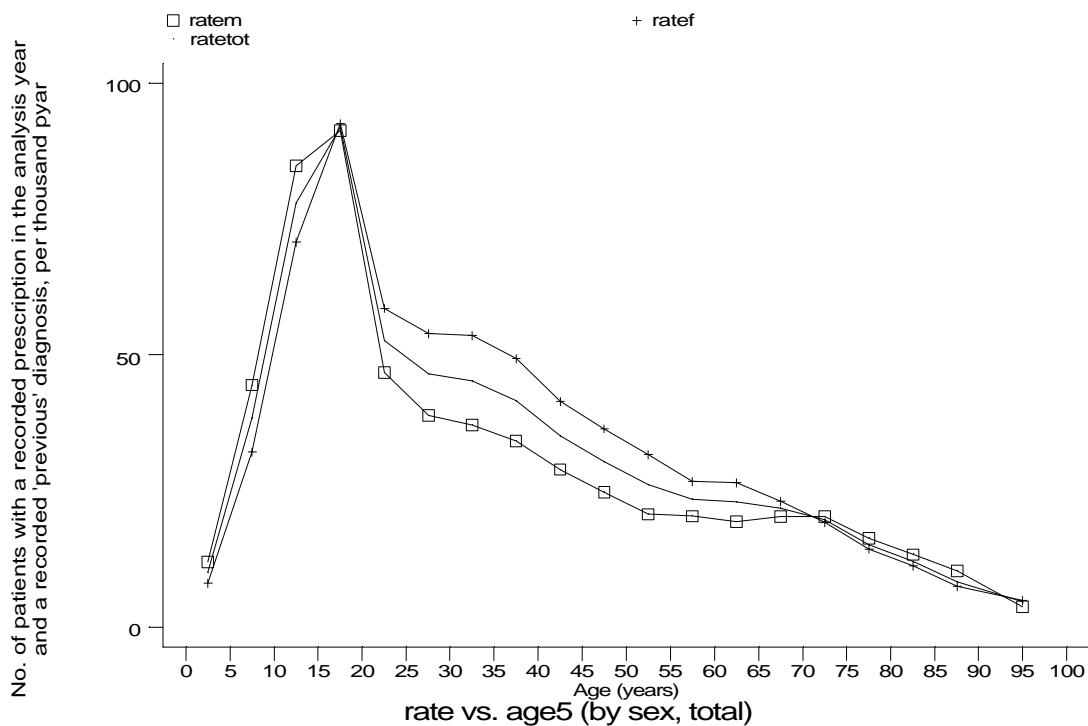


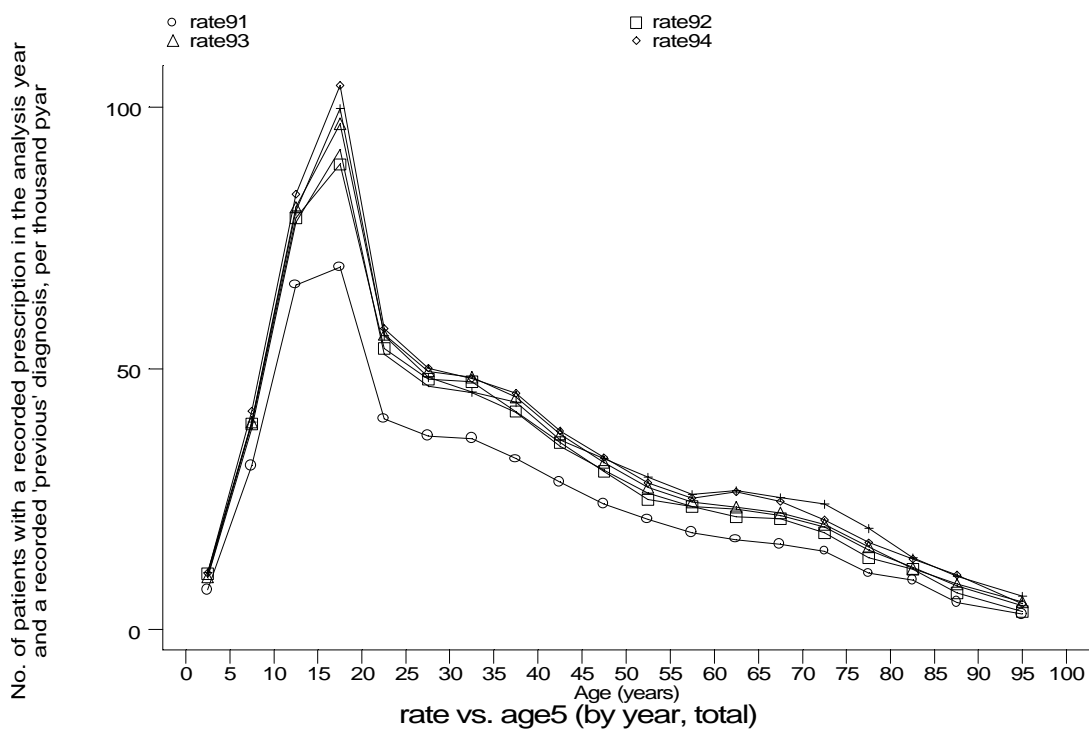
Age-sex distributions, yearly trends and cohort analysis (crude rates)

- GPRD Prescription for hayfever and diagnosis of hayfever, England 1991-95

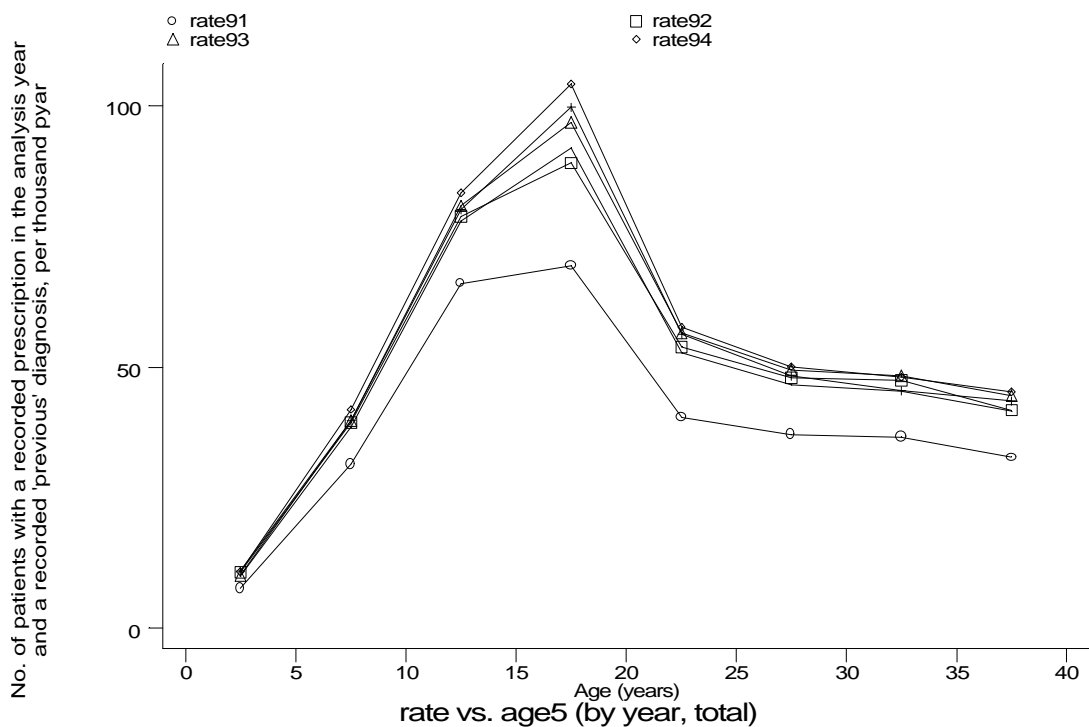


Age-sex distributions, yearly trends and cohort analysis (crude rates)

- GPRD Prescription for hayfever and diagnosis of hayfever, England 1991-95



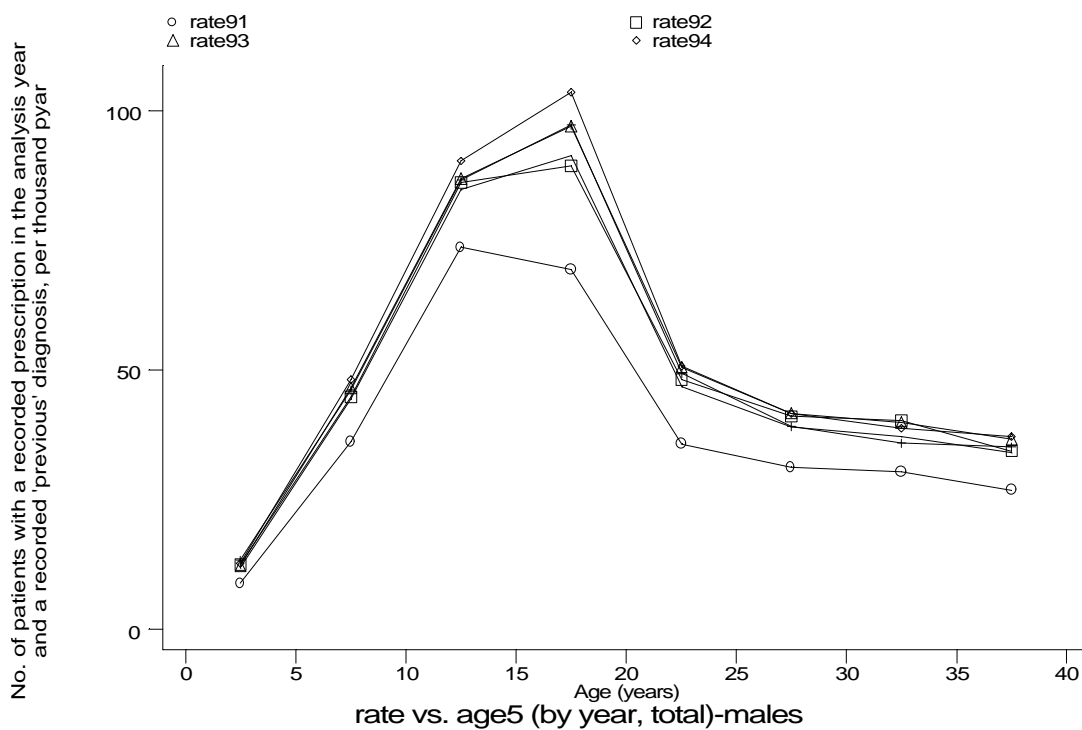
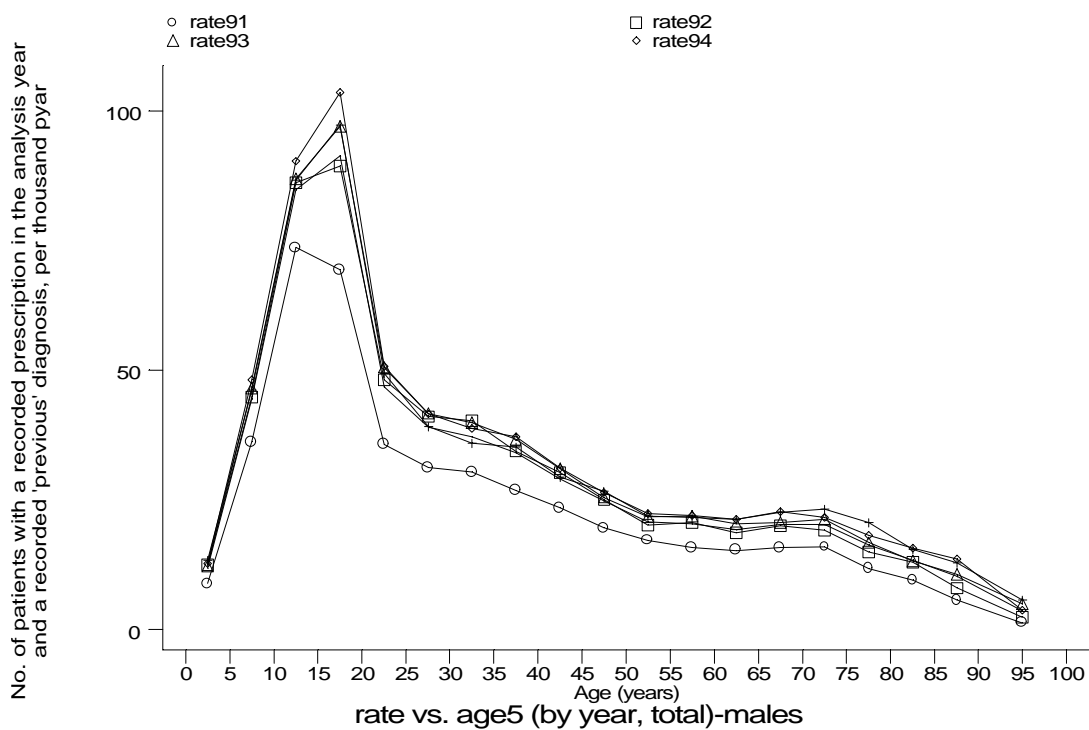
g1c2b1.gph
2. HF drugs + 'previous' diag of HF



g1c2b2.gph
2. HF drugs + 'previous' diag of HF

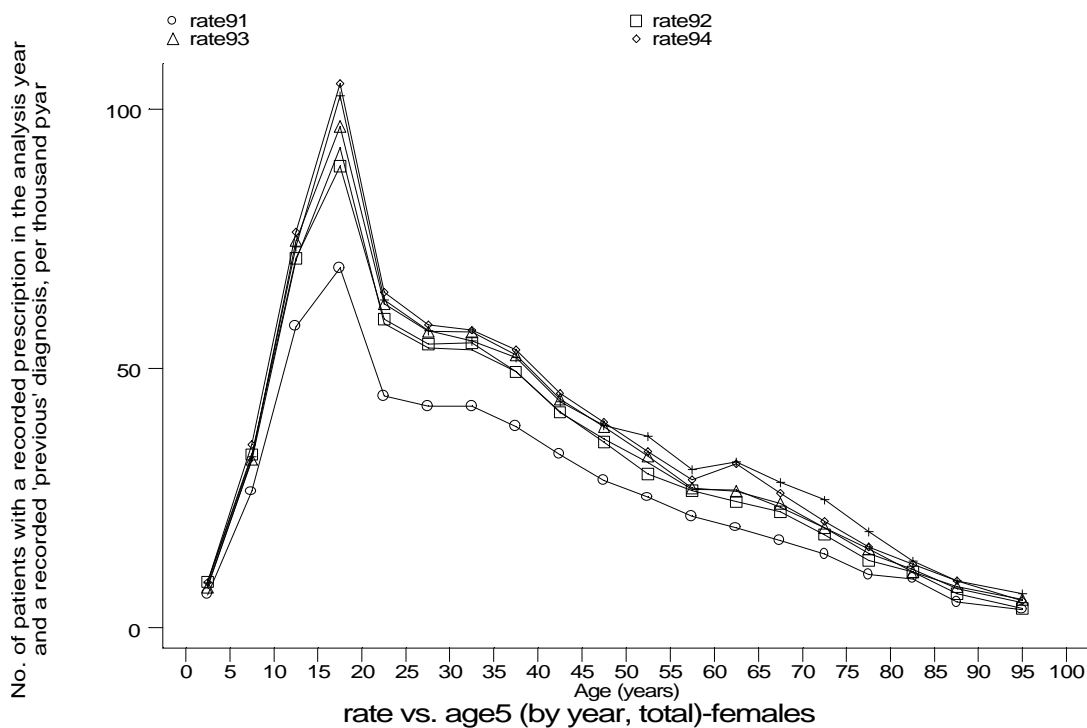
Age-sex distributions, yearly trends and cohort analysis (crude rates)

- GPRD Prescription for hayfever and diagnosis of hayfever, England 1991-95

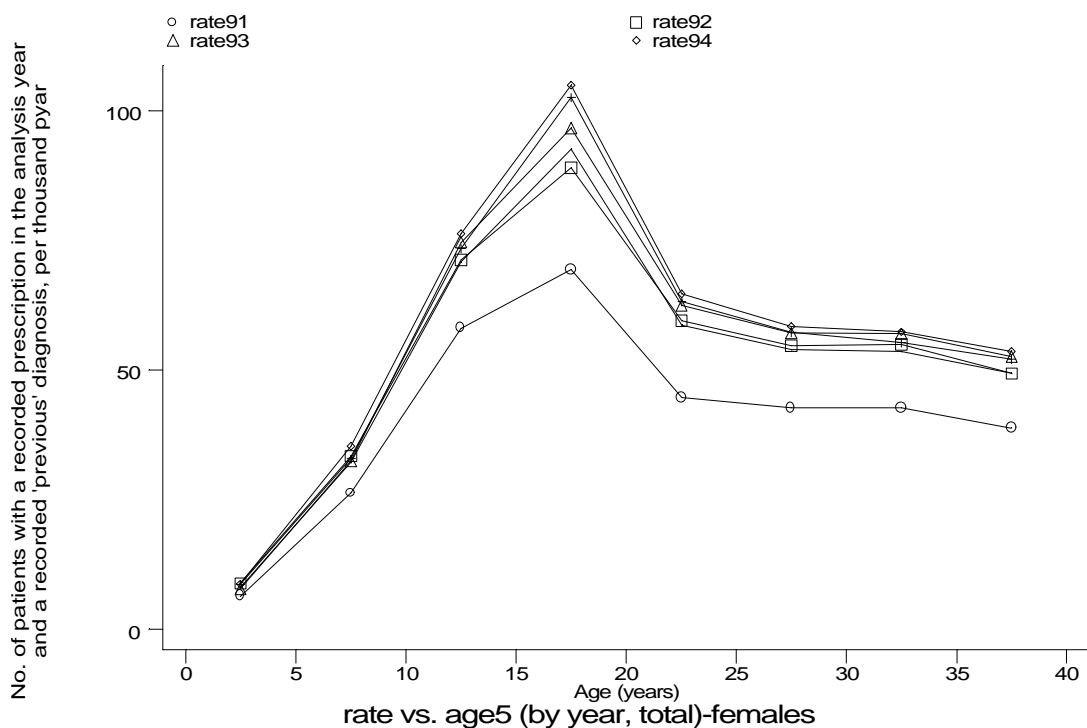


Age-sex distributions, yearly trends and cohort analysis (crude rates)

- GPRD Prescription for hayfever and diagnosis of hayfever, England 1991-95



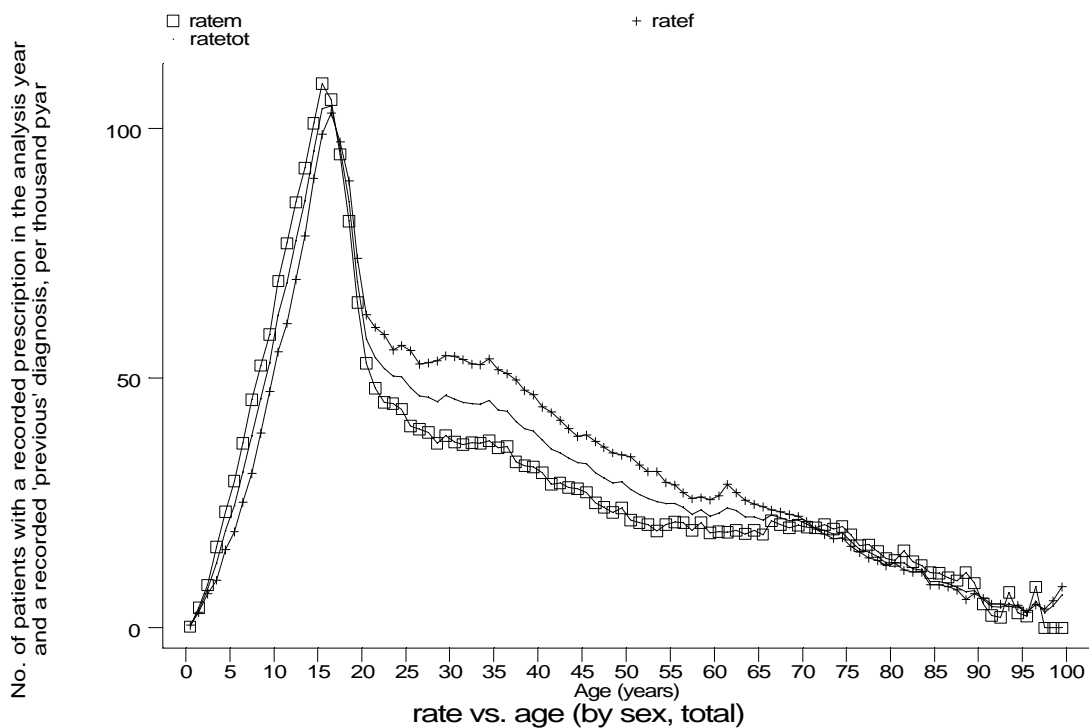
g1c2b1f.gph: FEMALES
2. HF drugs + 'previous' diag of HF



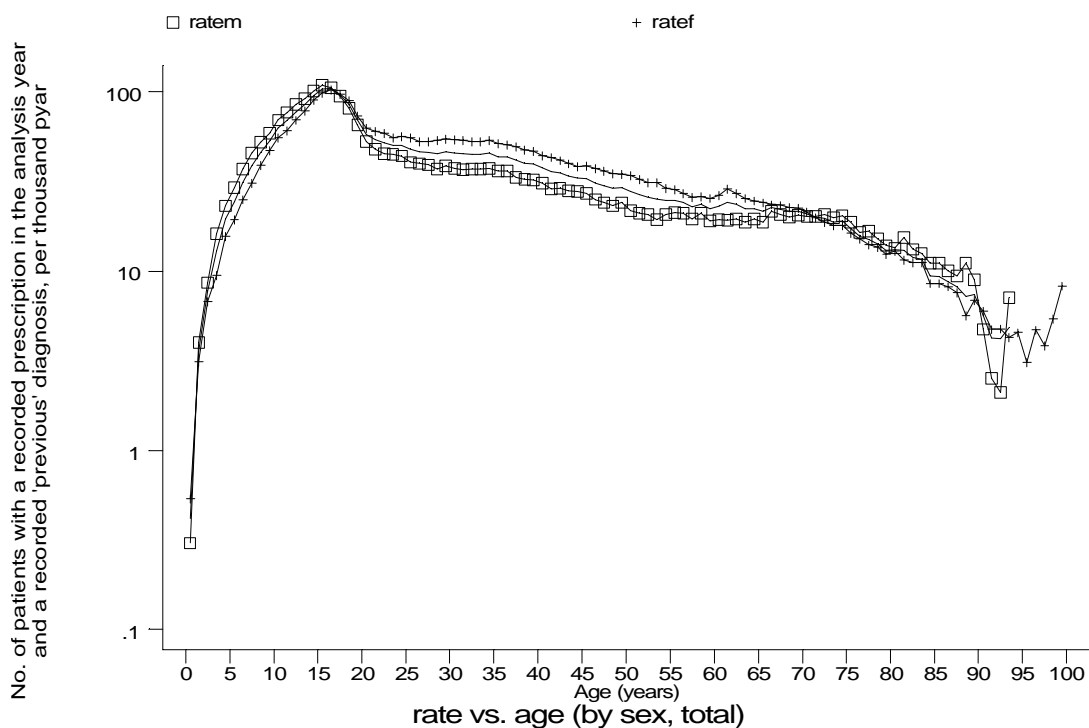
g1c2b2f.gph: FEMALES
2. HF drugs + 'previous' diag of HF

Age-sex distributions, yearly trends and cohort analysis (crude rates)

- GPRD Prescription for hayfever and diagnosis of hayfever, England 1991-95



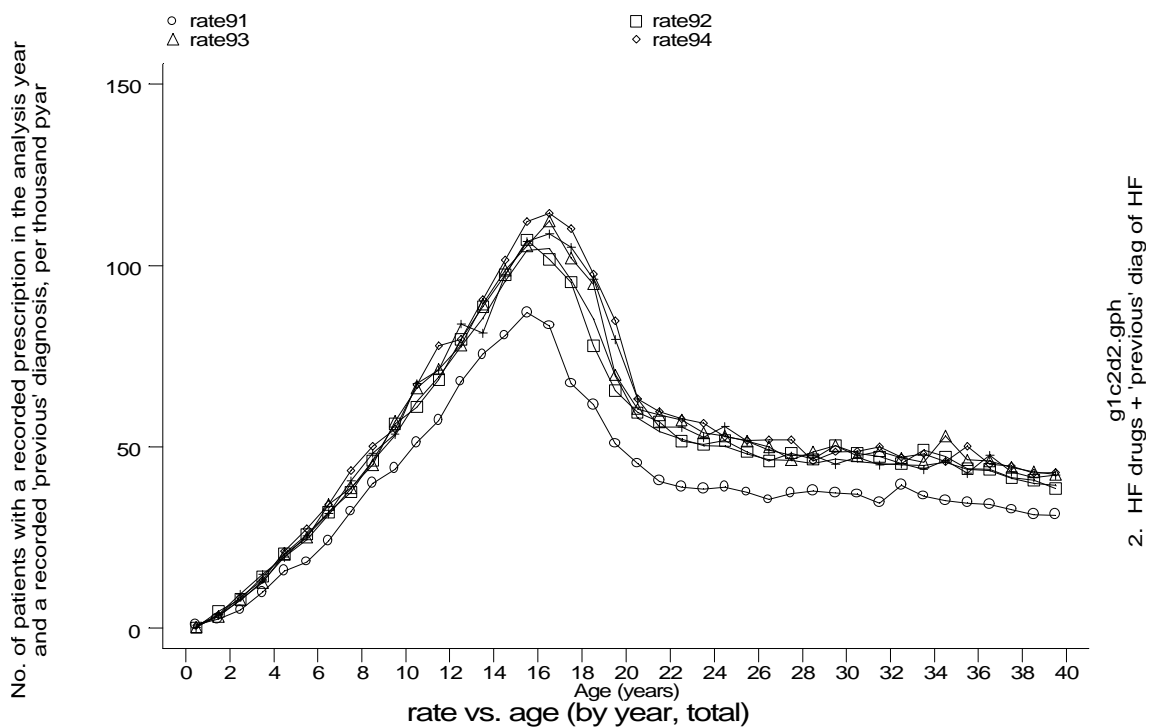
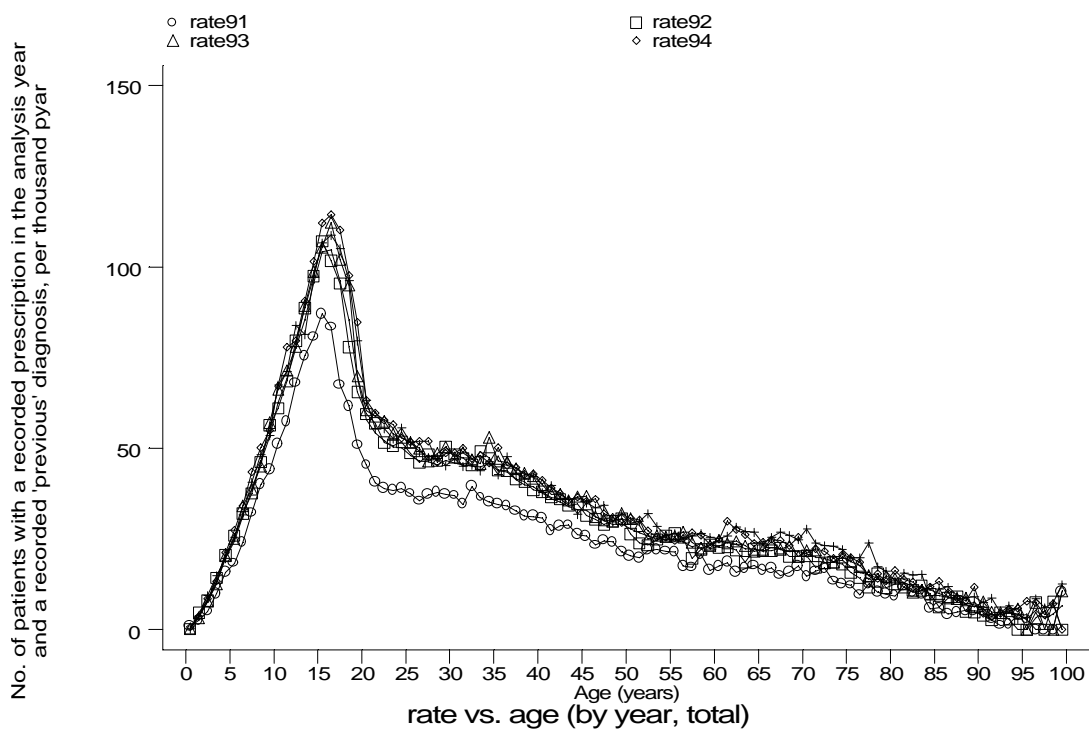
g1c2c1.gph
2. HF drugs + 'previous' diag of HF



g1c2c2.gph
2. HF drugs + 'previous' diag of HF

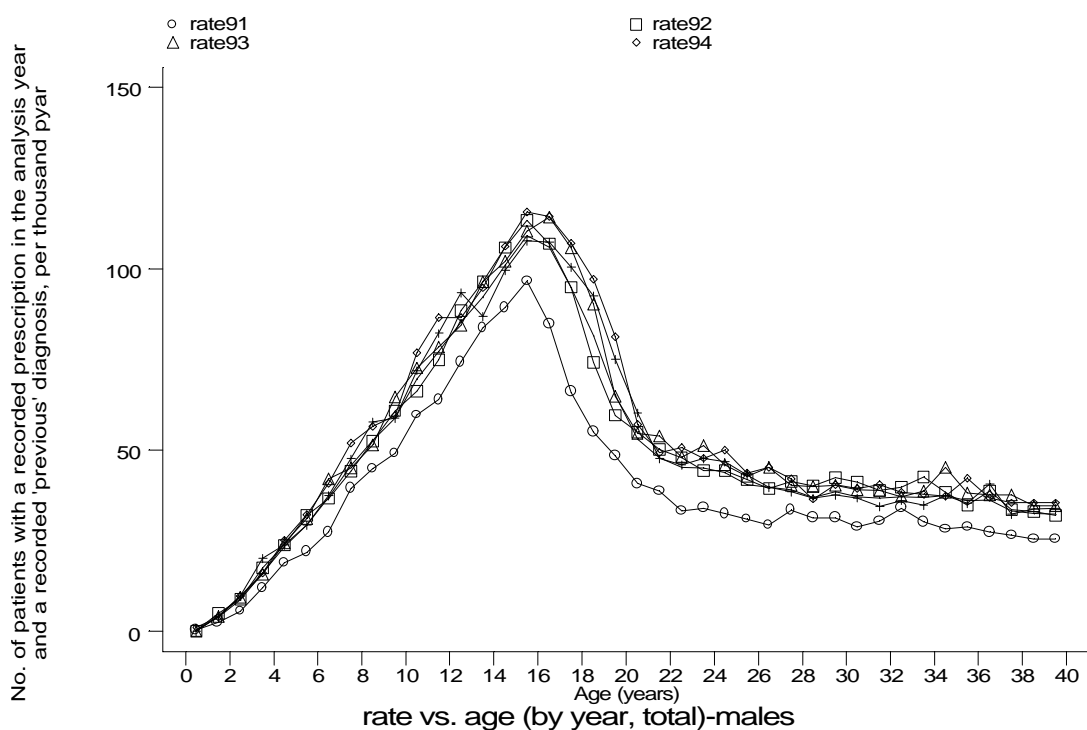
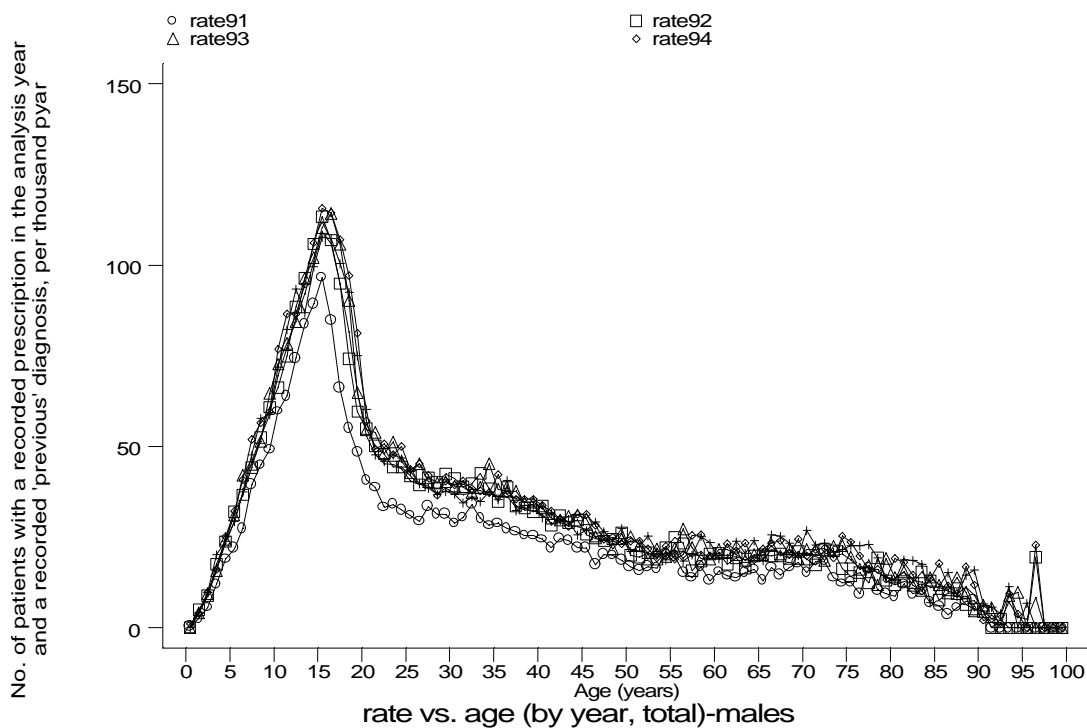
Age-sex distributions, yearly trends and cohort analysis (crude rates)

- GPRD Prescription for hayfever and diagnosis of hayfever, England 1991-95



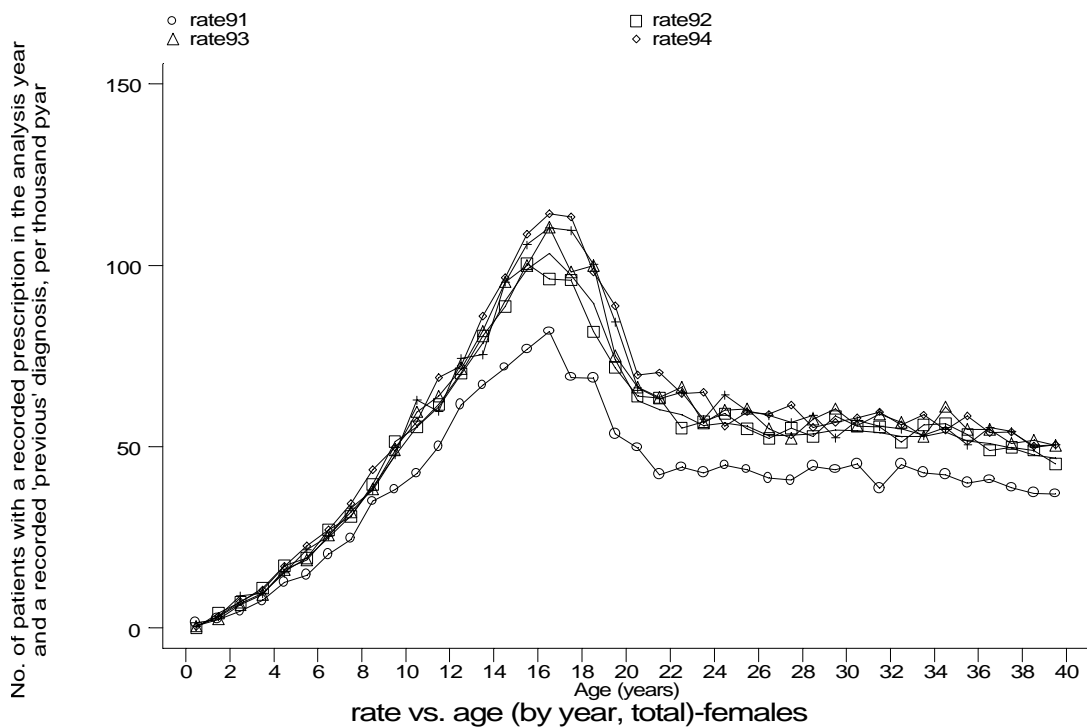
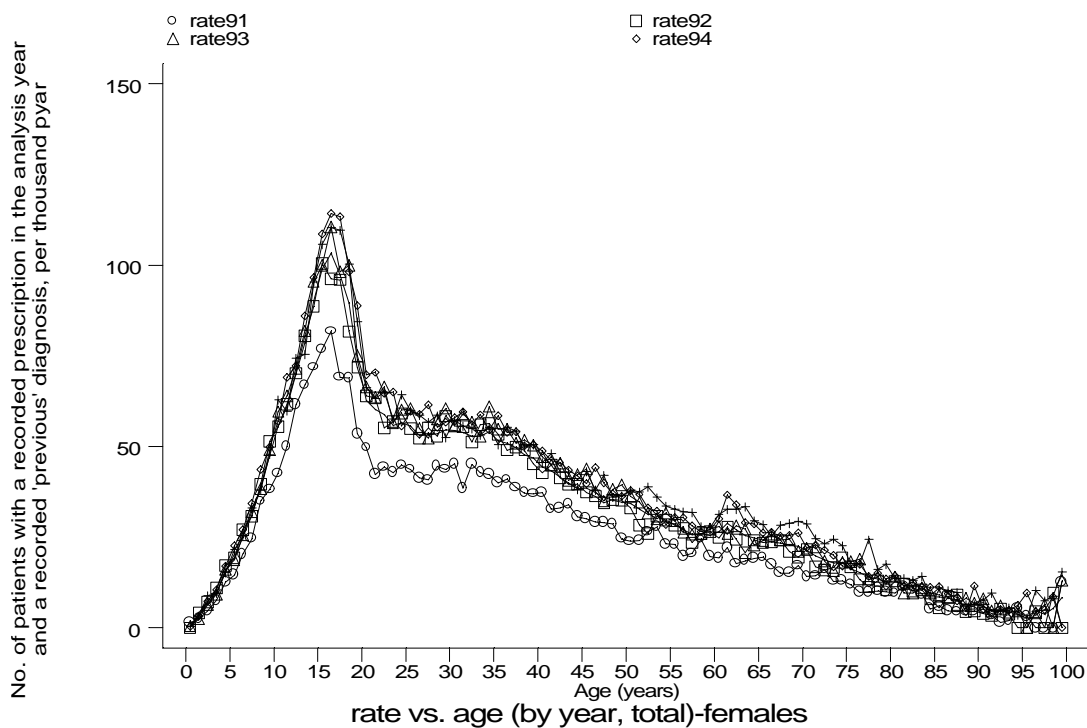
Age-sex distributions, yearly trends and cohort analysis (crude rates)

- GPRD Prescription for hayfever and diagnosis of hayfever, England 1991-95



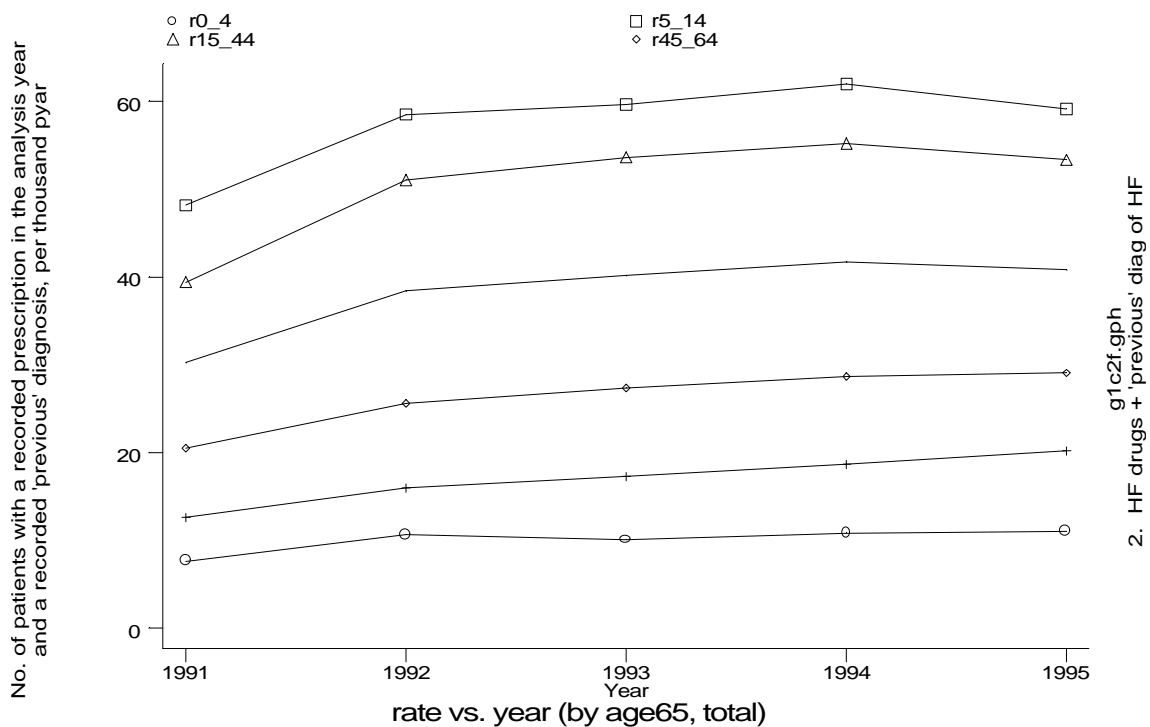
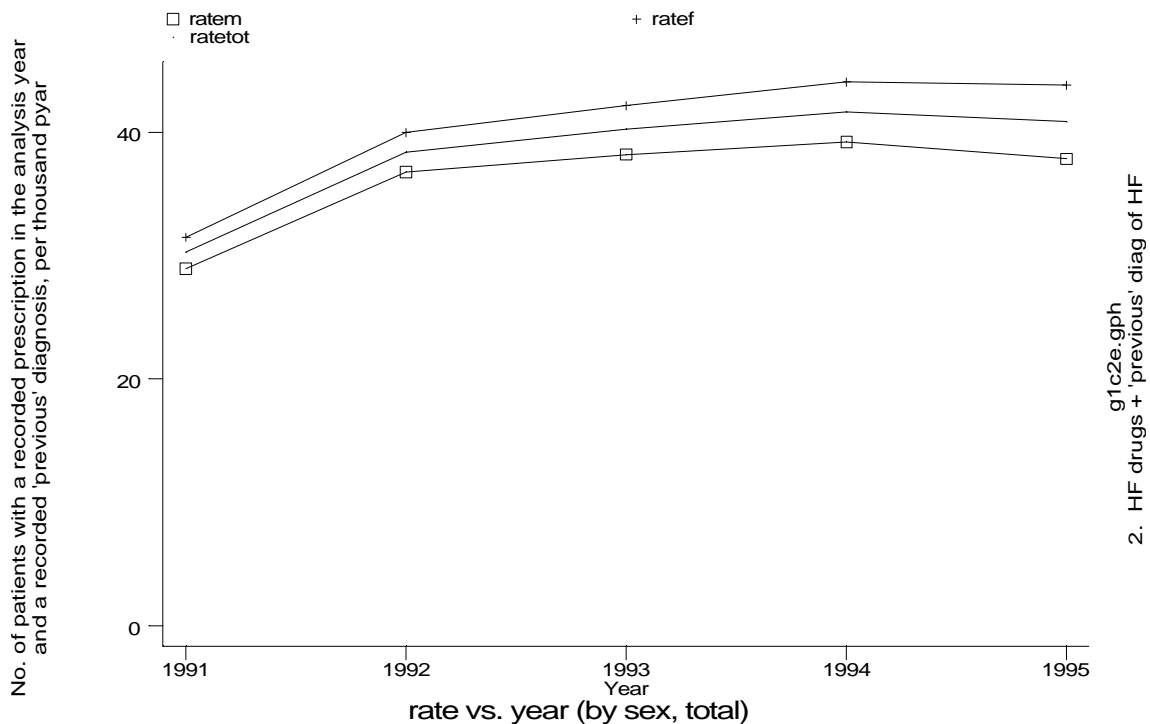
Age-sex distributions, yearly trends and cohort analysis (crude rates)

- GPRD Prescription for hayfever and diagnosis of hayfever, England 1991-95



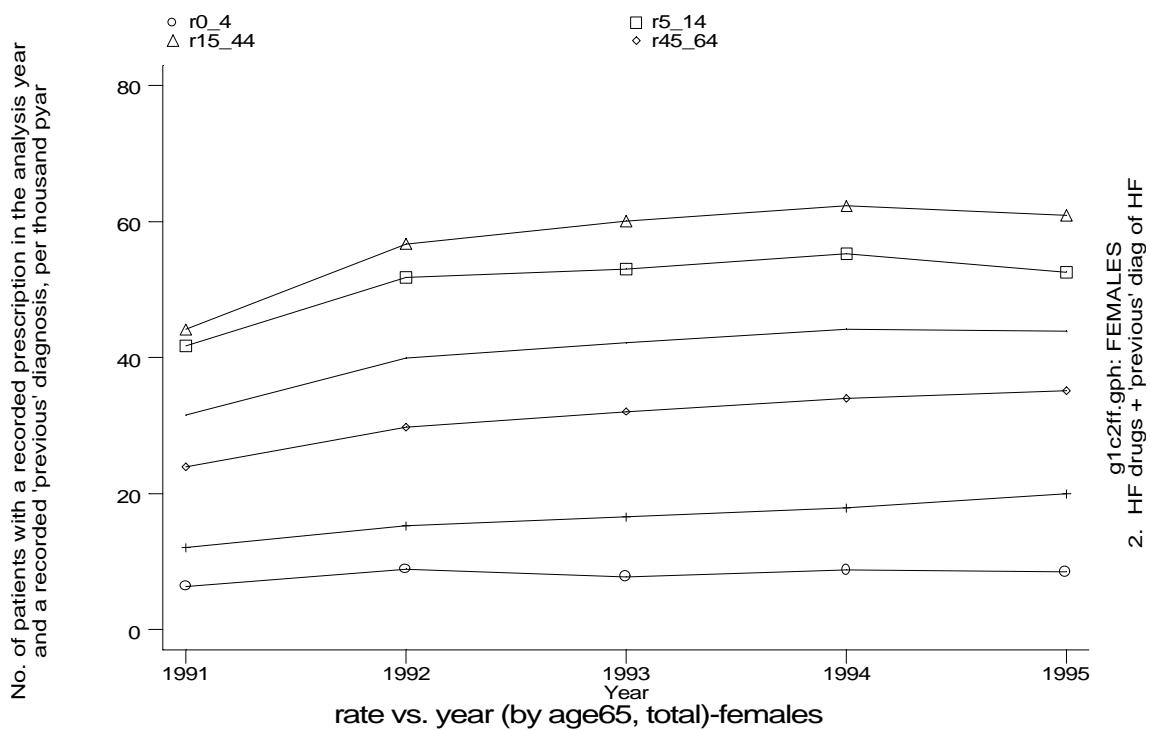
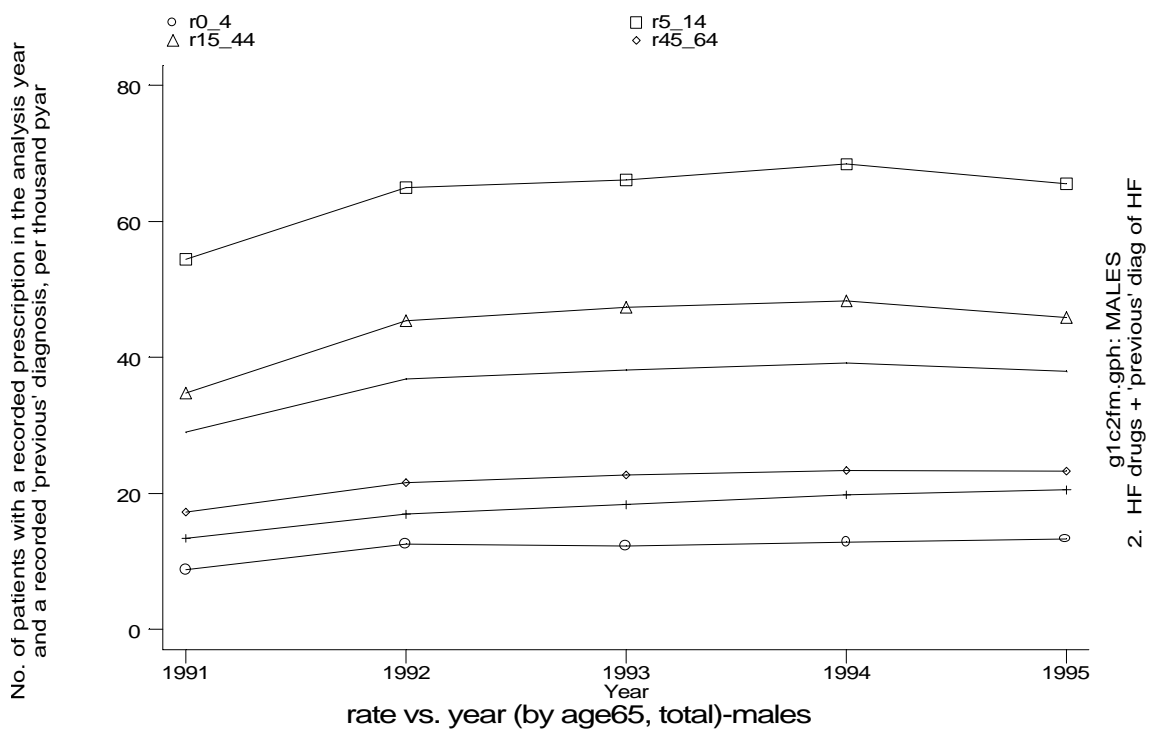
Age-sex distributions, yearly trends and cohort analysis (crude rates)

- GPRD Prescription for hayfever and diagnosis of hayfever, England 1991-95



Age-sex distributions, yearly trends and cohort analysis (crude rates)

- GPRD Prescription for hayfever and diagnosis of hayfever, England 1991-95

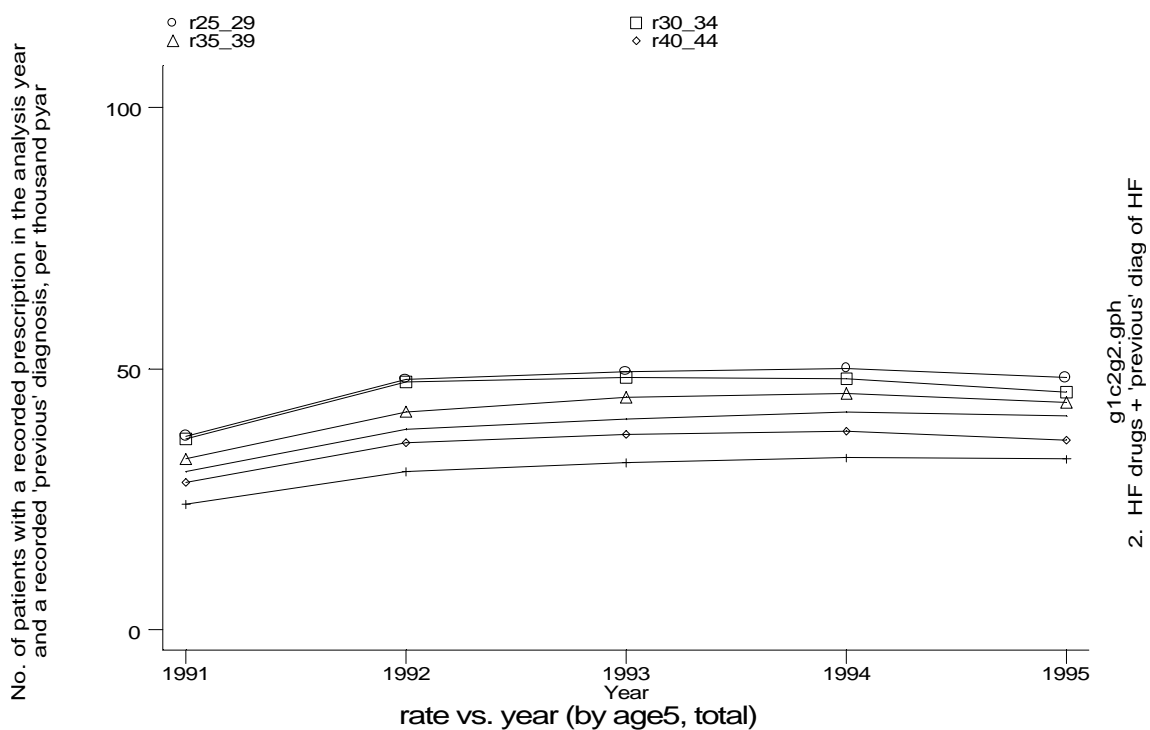
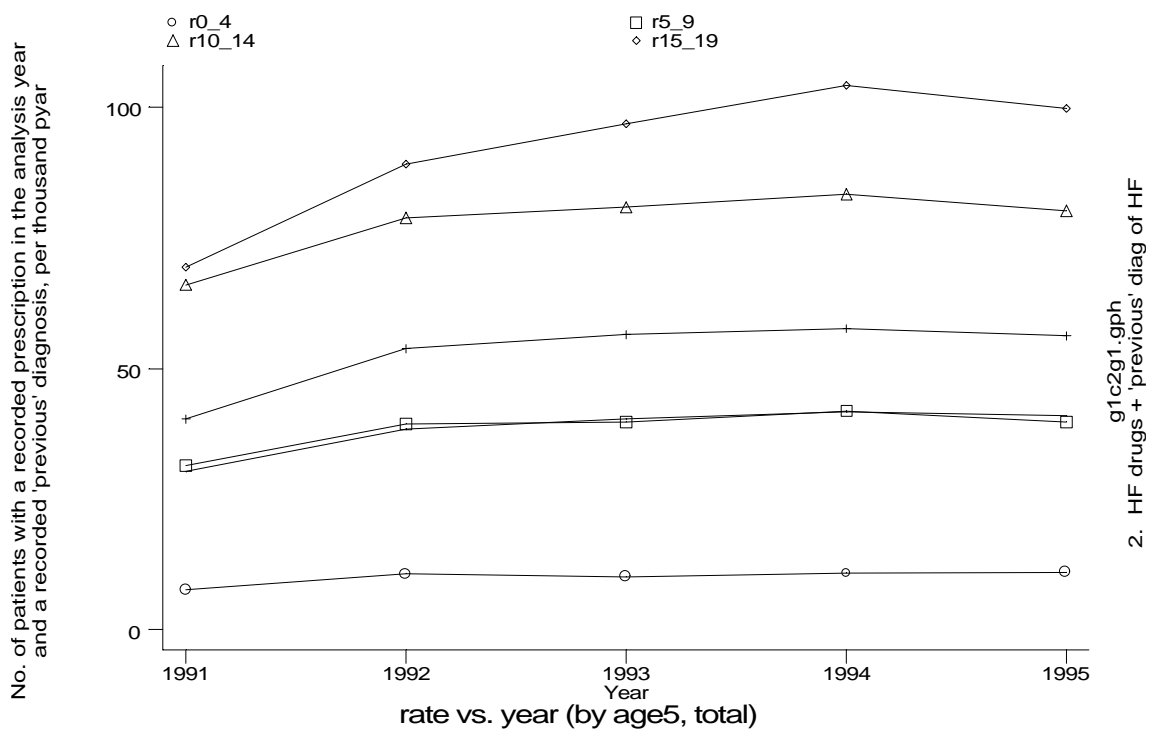


g1c2fm.gph: MALES
2. HF drugs + 'previous' diag of HF

g1c2ff.gph: FEMALES
2. HF drugs + 'previous' diag of HF

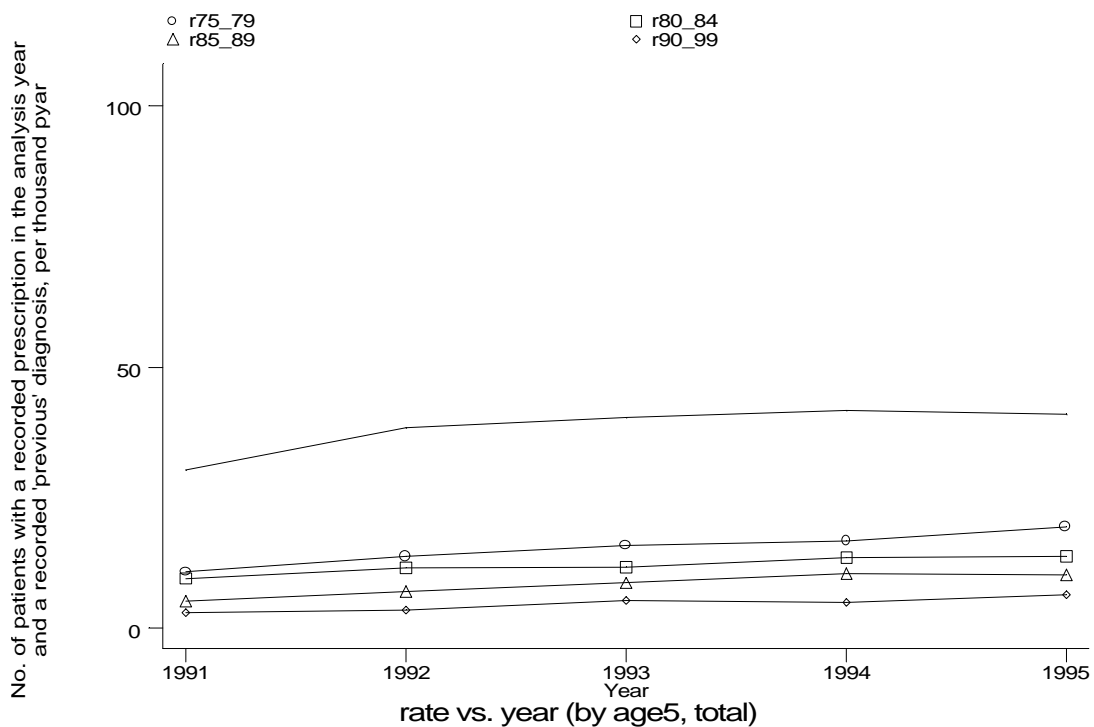
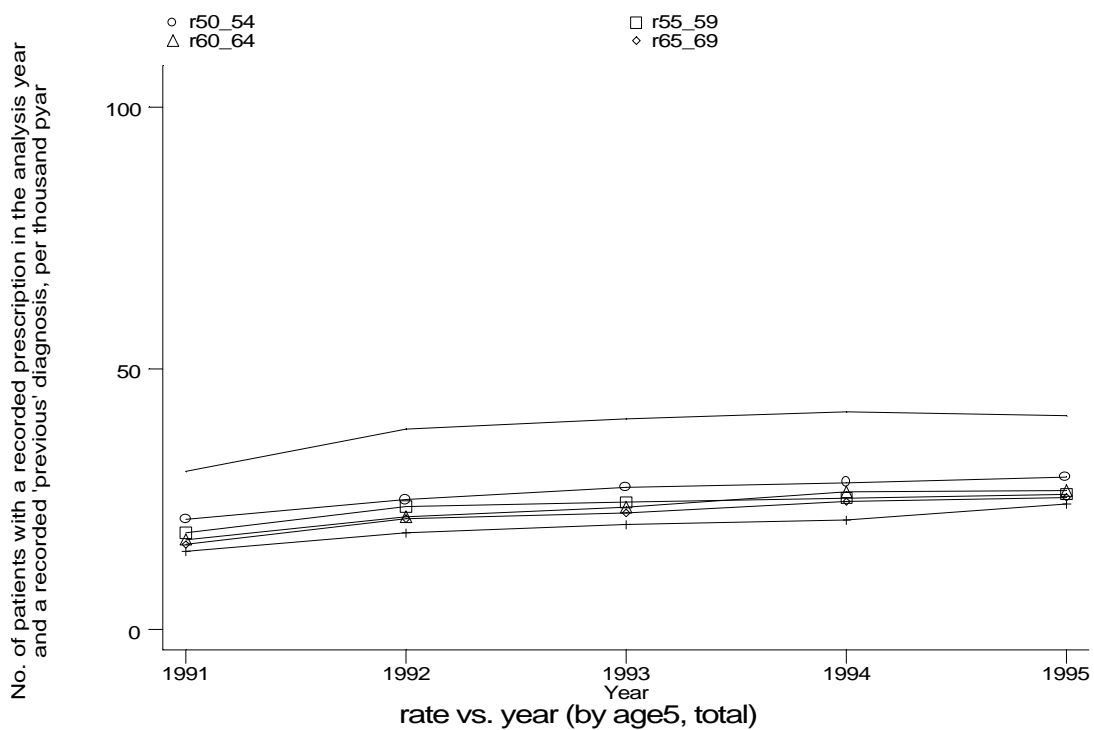
Age-sex distributions, yearly trends and cohort analysis (crude rates)

- GPRD Prescription for hayfever and diagnosis of hayfever, England 1991-95



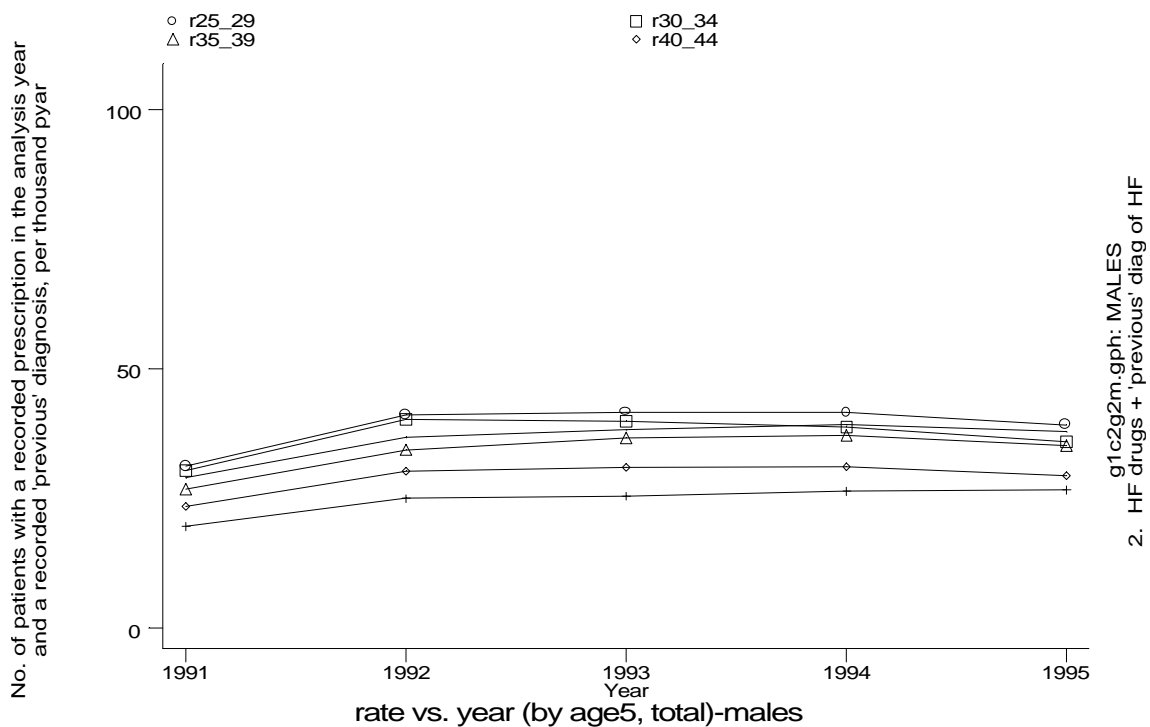
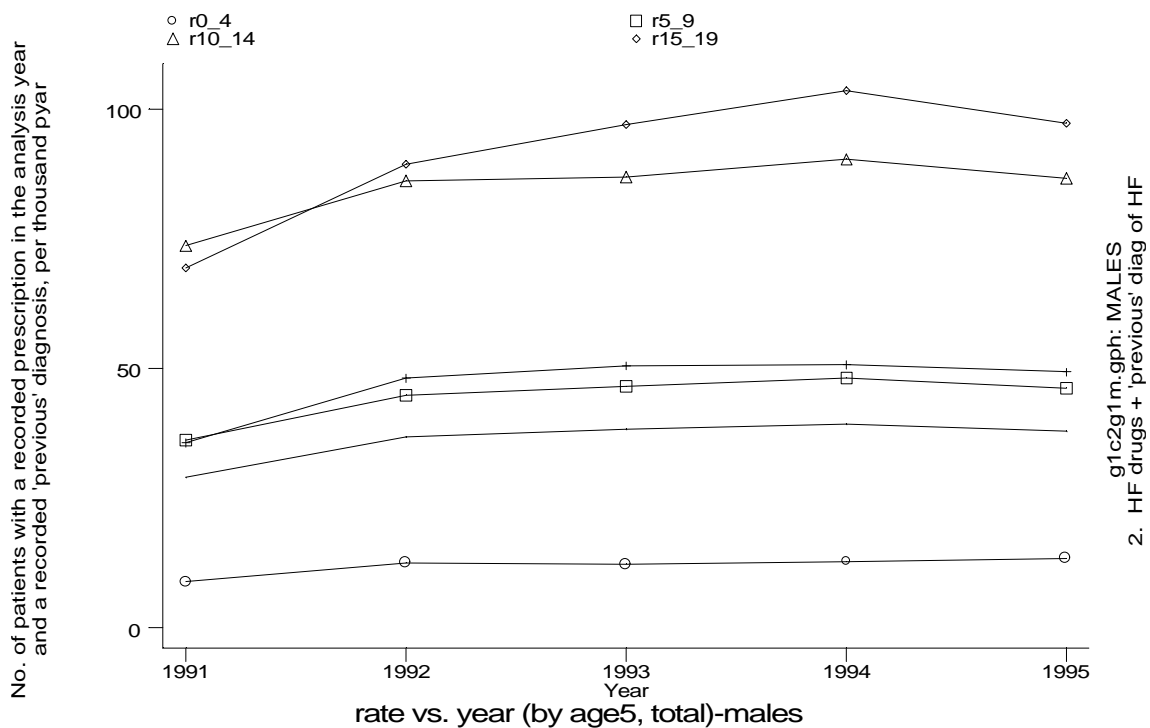
Age-sex distributions, yearly trends and cohort analysis (crude rates)

- GPRD Prescription for hayfever and diagnosis of hayfever, England 1991-95



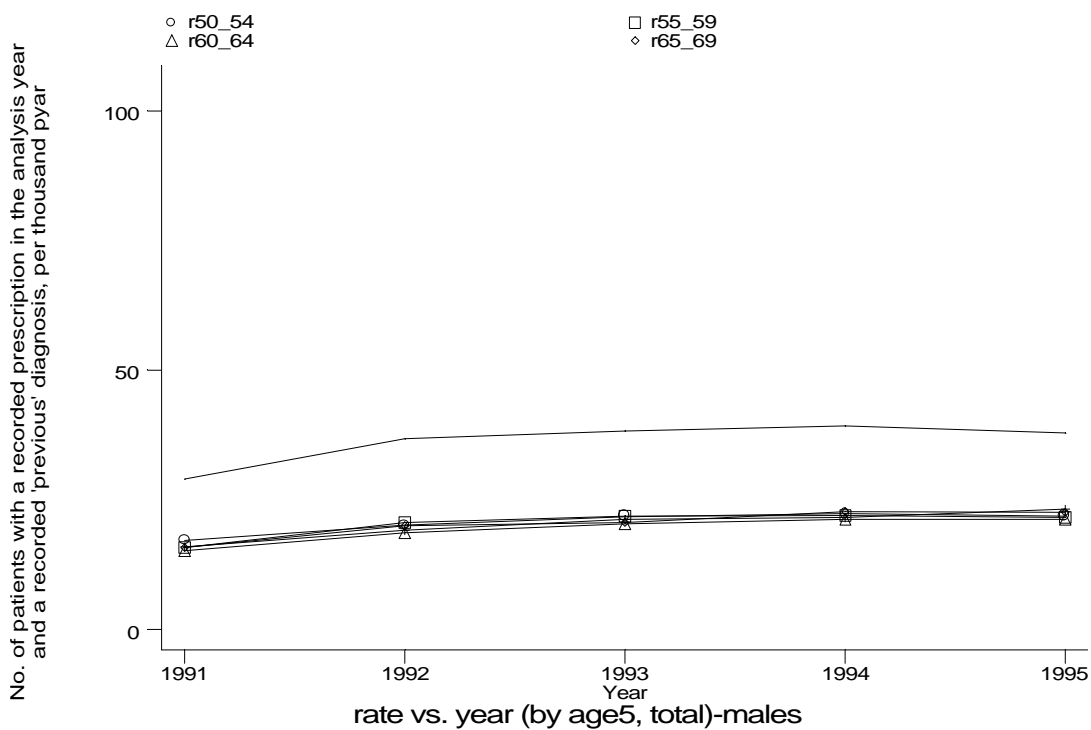
Age-sex distributions, yearly trends and cohort analysis (crude rates)

- GPRD Prescription for hayfever and diagnosis of hayfever, England 1991-95

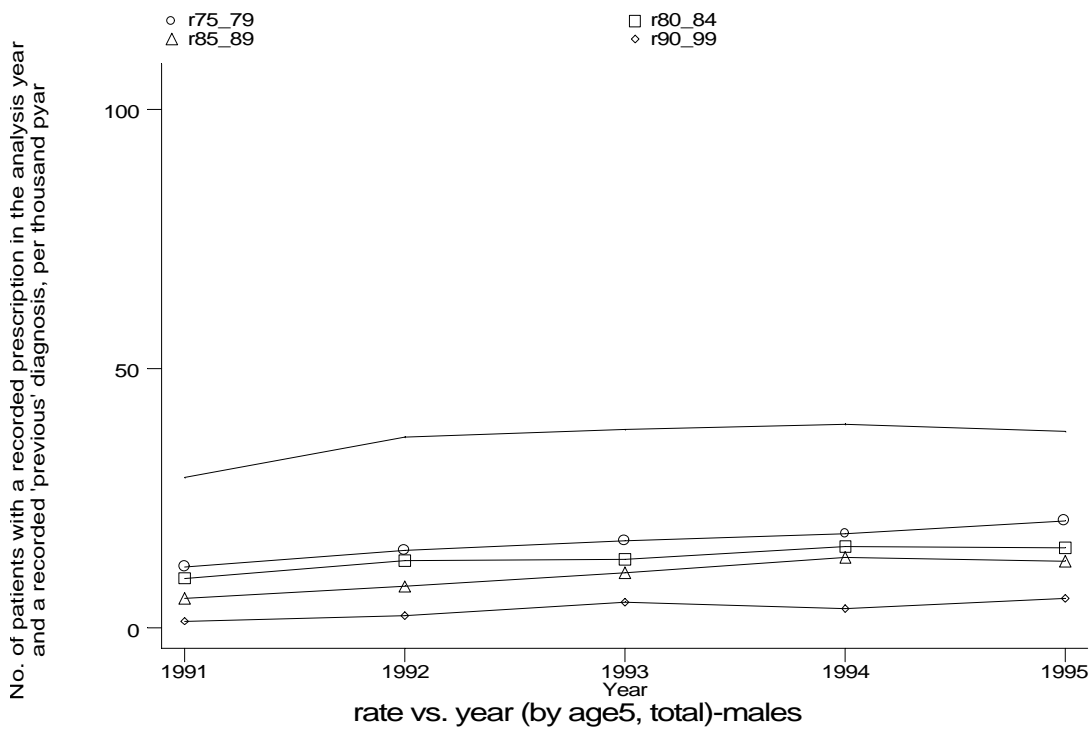


Age-sex distributions, yearly trends and cohort analysis (crude rates)

- GPRD Prescription for hayfever and diagnosis of hayfever, England 1991-95



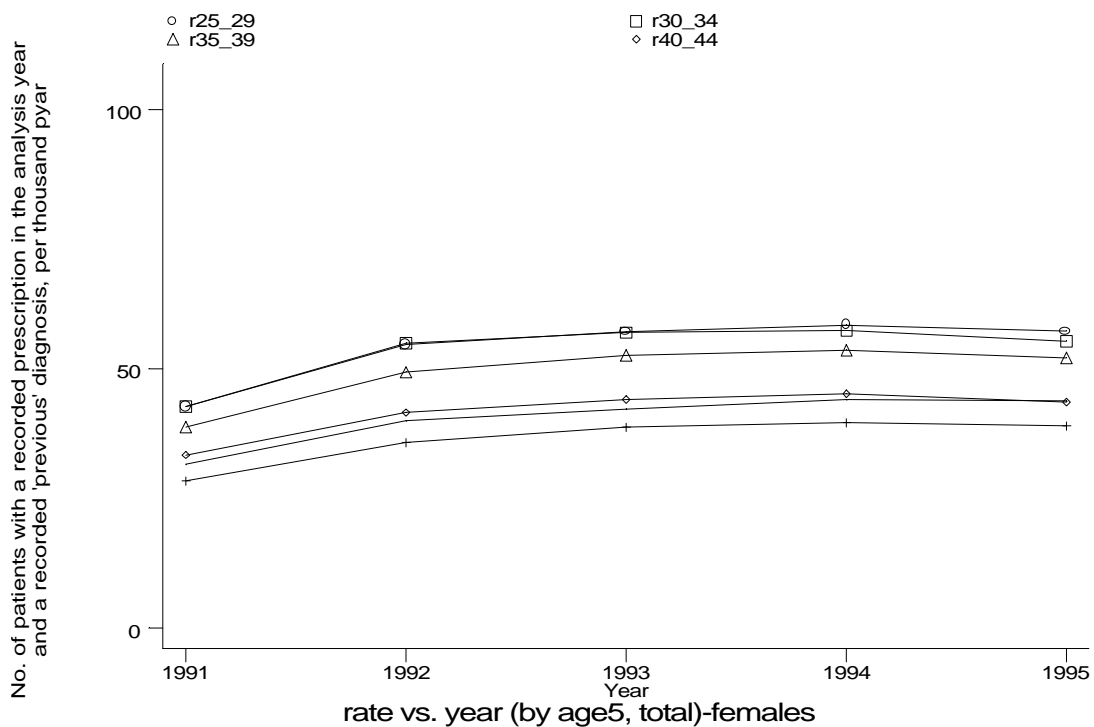
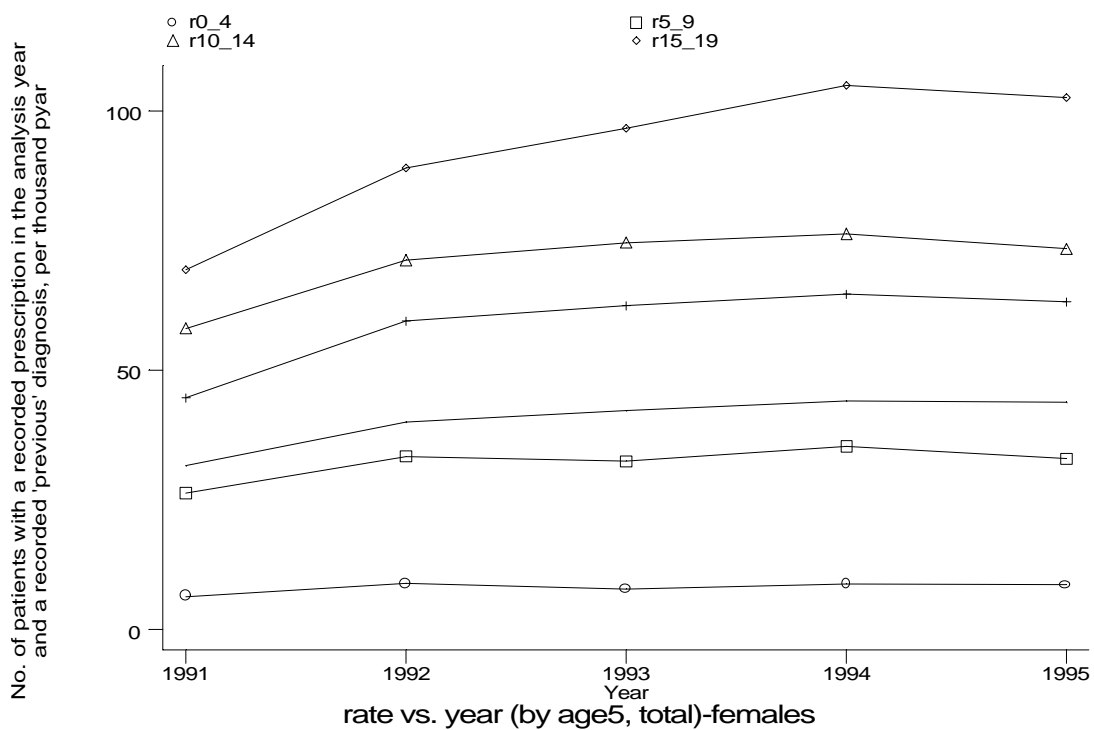
g1c2g3m.gph: MALES
2. HF drugs + 'previous' diag of HF



g1c2g4m.gph: MALES
2. HF drugs + 'previous' diag of HF

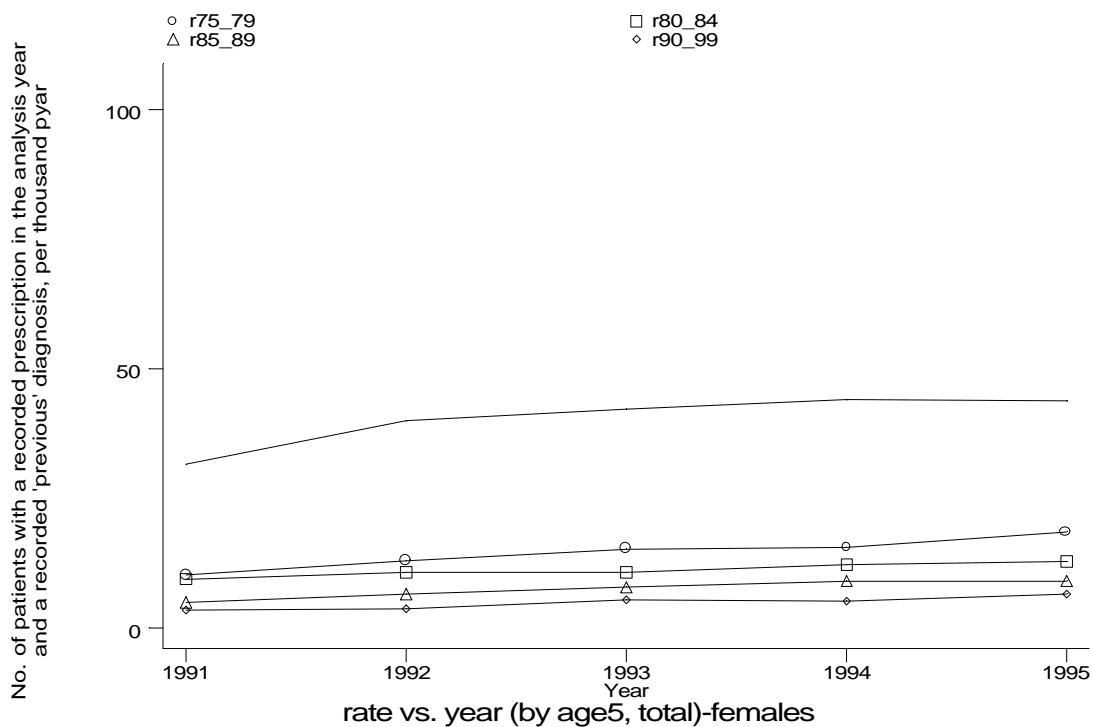
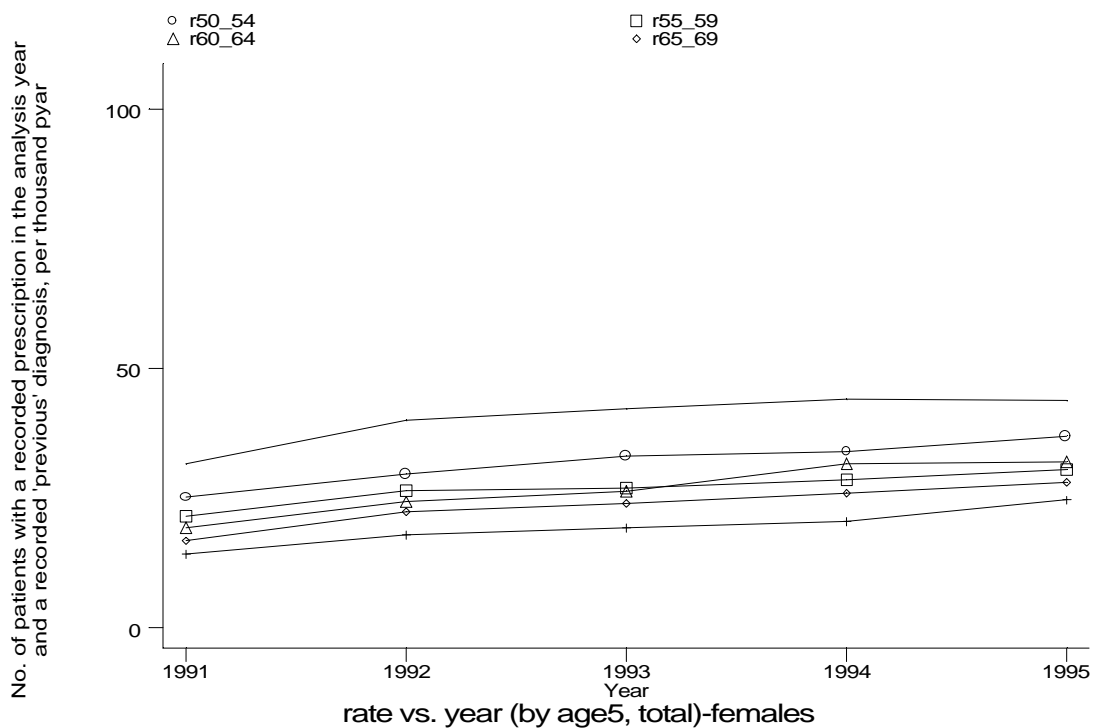
Age-sex distributions, yearly trends and cohort analysis (crude rates)

- GPRD Prescription for hayfever and diagnosis of hayfever, England 1991-95



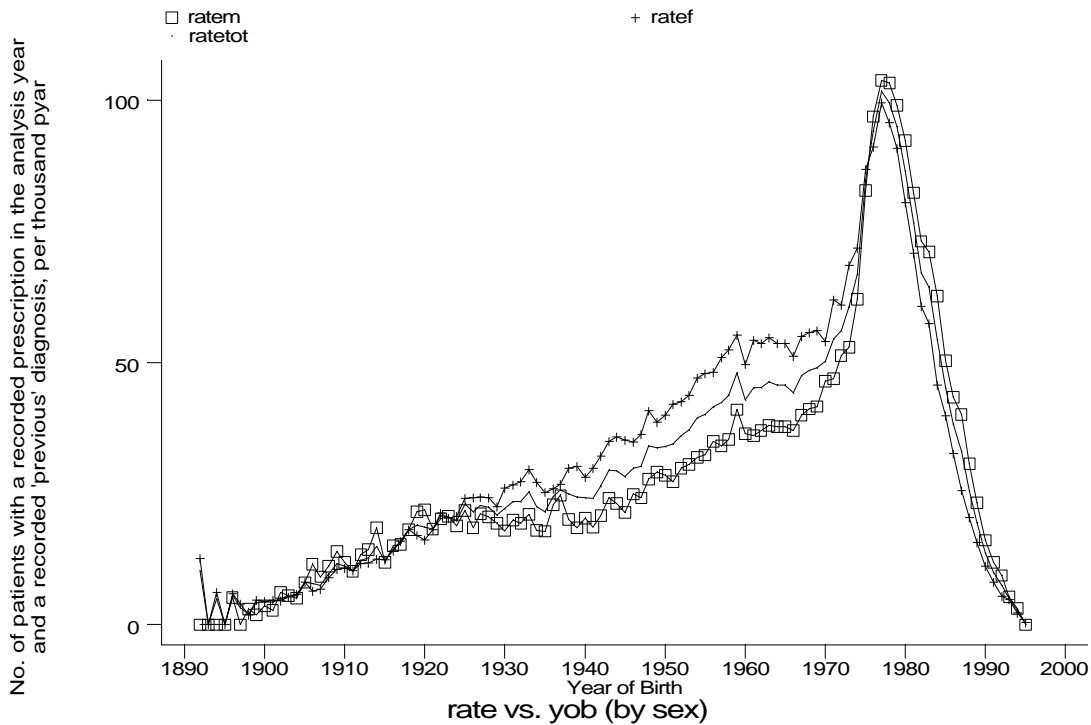
Age-sex distributions, yearly trends and cohort analysis (crude rates)

- GPRD Prescription for hayfever and diagnosis of hayfever, England 1991-95



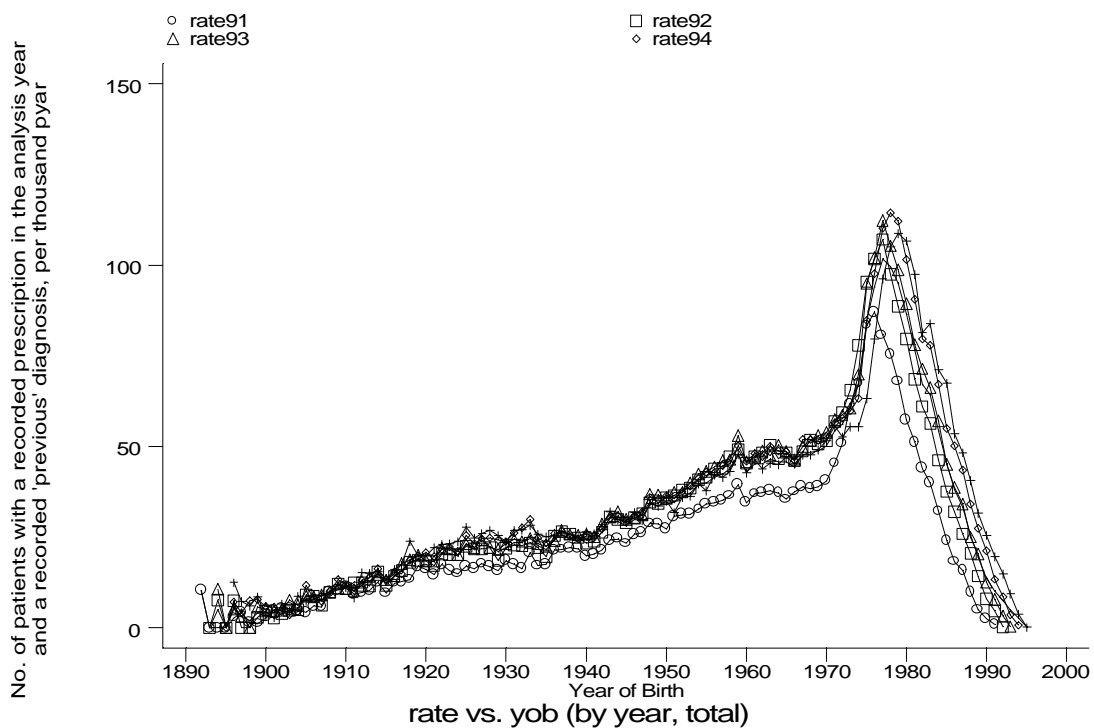
Age-sex distributions, yearly trends and cohort analysis (crude rates)

- GPRD Prescription for hayfever and diagnosis of hayfever, England 1991-95

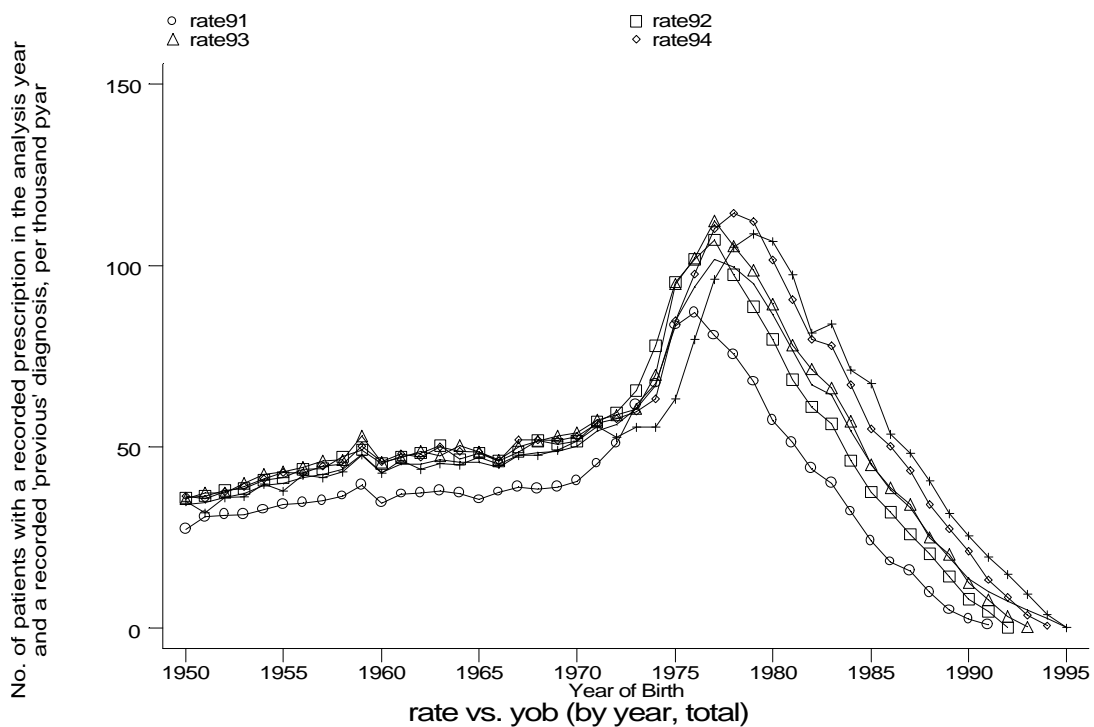


Age-sex distributions, yearly trends and cohort analysis (crude rates)

- GPRD Prescription for hayfever and diagnosis of hayfever, England 1991-95



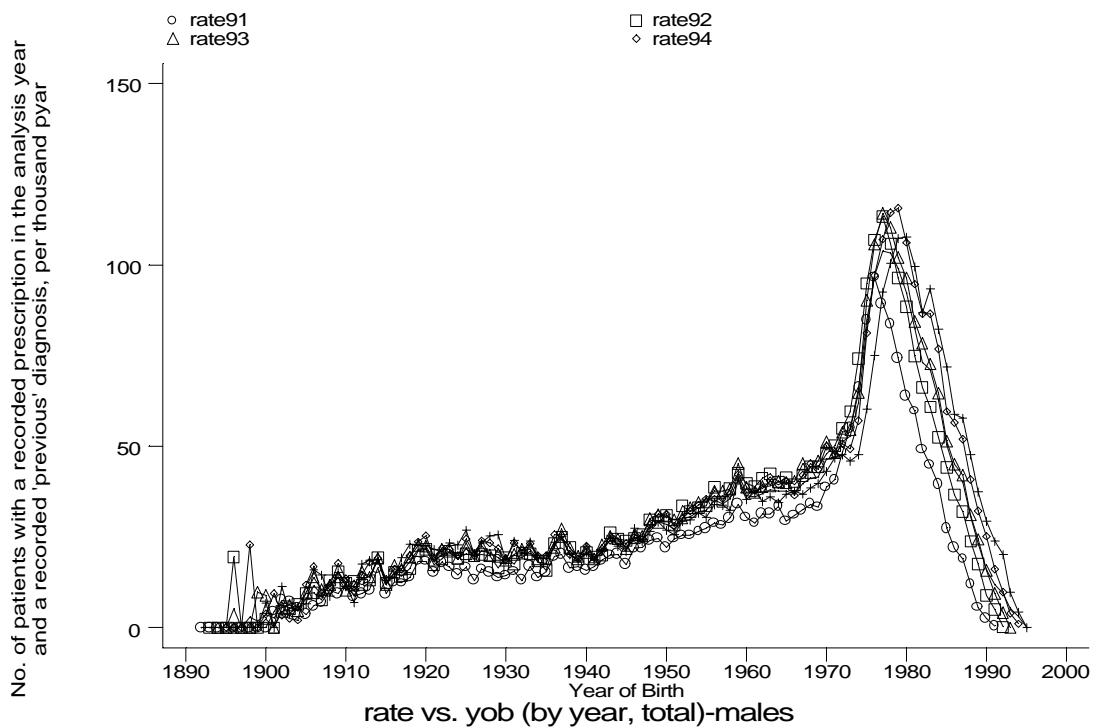
g1c2i1.gph
2. HF drugs + 'previous' diag of HF



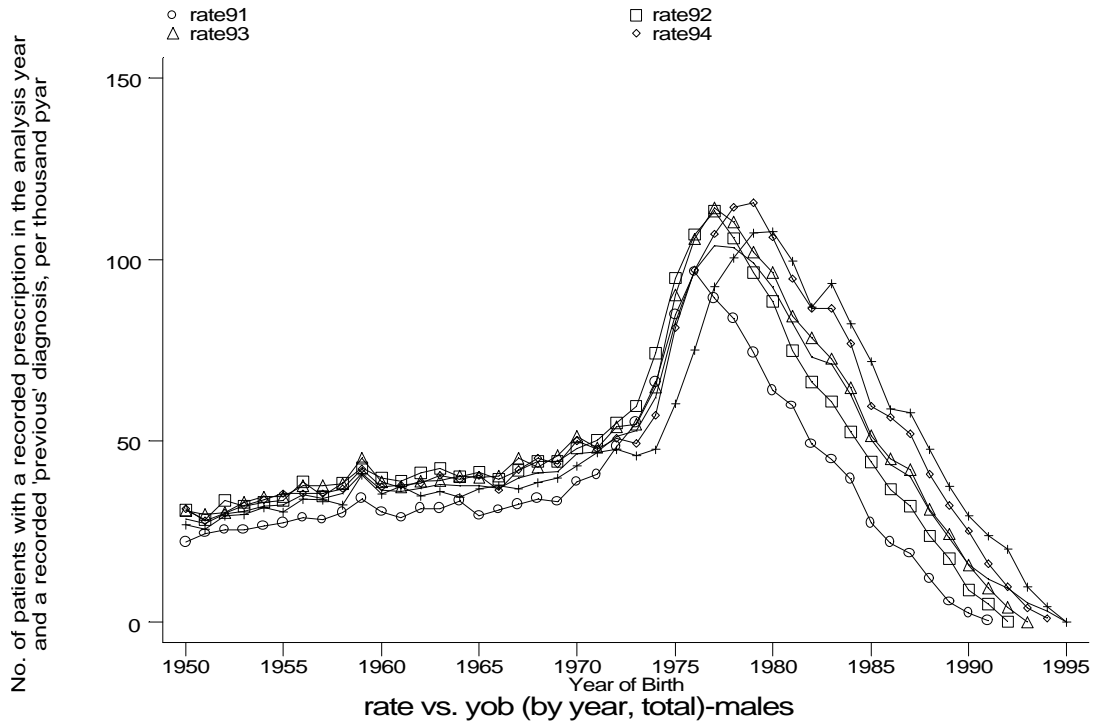
g1c2i2.gph
2. HF drugs + 'previous' diag of HF

Age-sex distributions, yearly trends and cohort analysis (crude rates)

- GPRD Prescription for hayfever and diagnosis of hayfever, England 1991-95



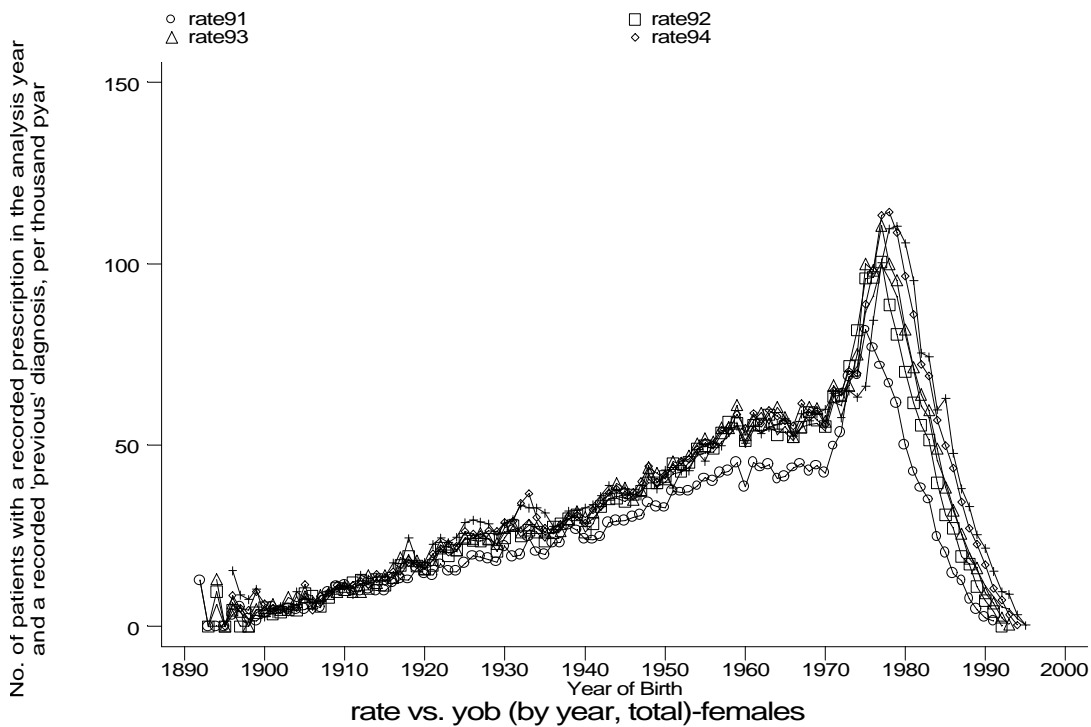
g1c2i1m.gph: MALES
2. HF drugs + 'previous' diag of HF



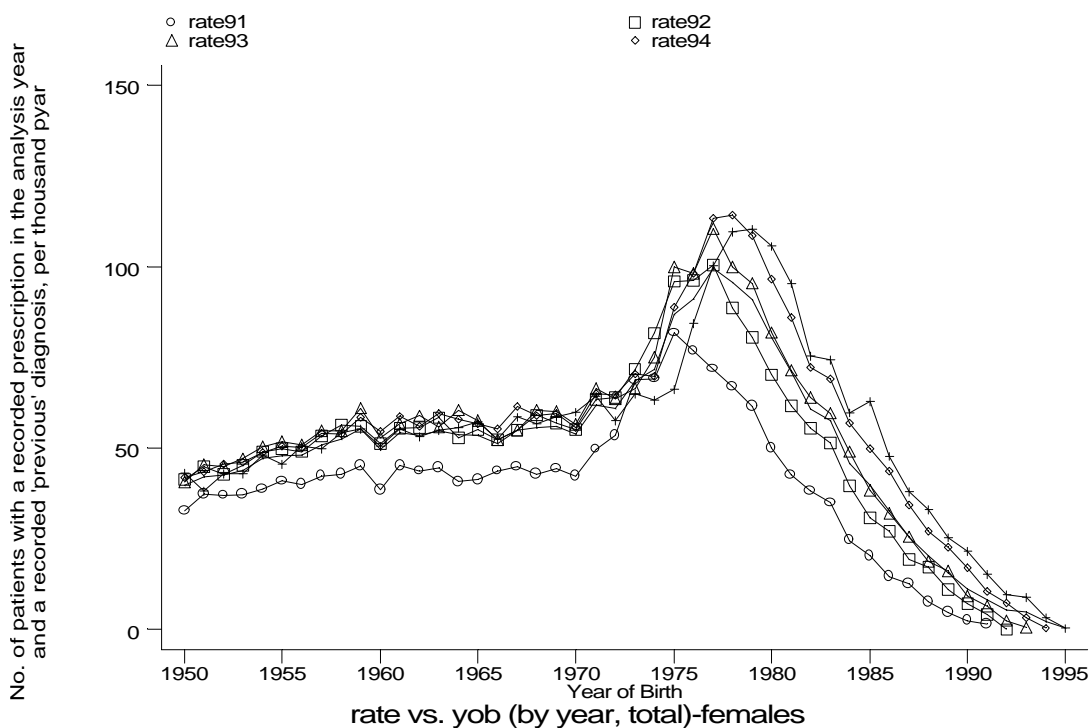
g1c2i2m.gph: MALES
2. HF drugs + 'previous' diag of HF

Age-sex distributions, yearly trends and cohort analysis (crude rates)

- GPRD Prescription for hayfever and diagnosis of hayfever, England 1991-95



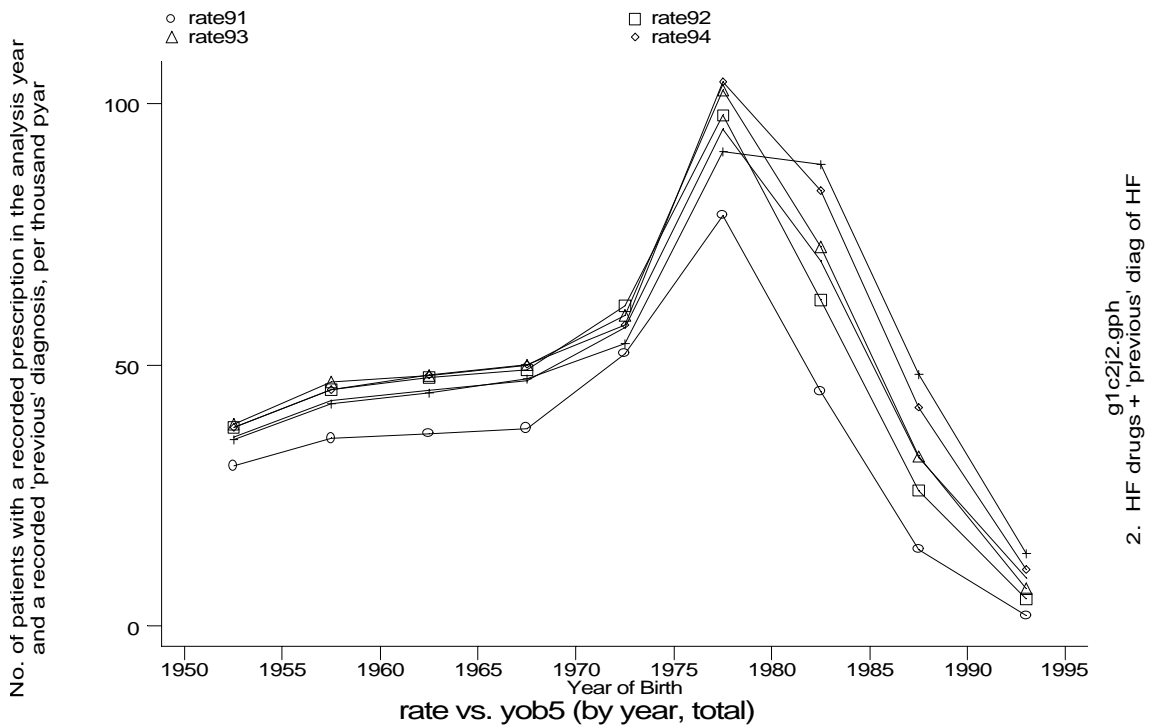
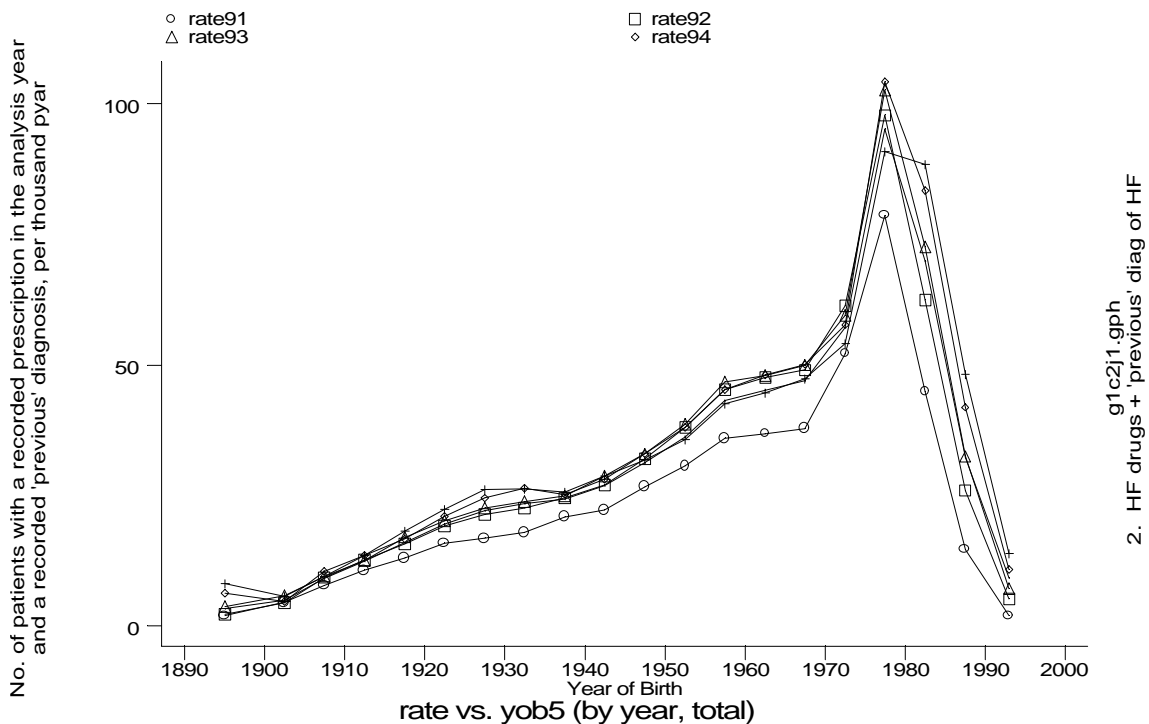
g1c2i1f.gph: FEMALES
2. HF drugs + 'previous' diag of HF



g1c2i2f.gph: FEMALES
2. HF drugs + 'previous' diag of HF

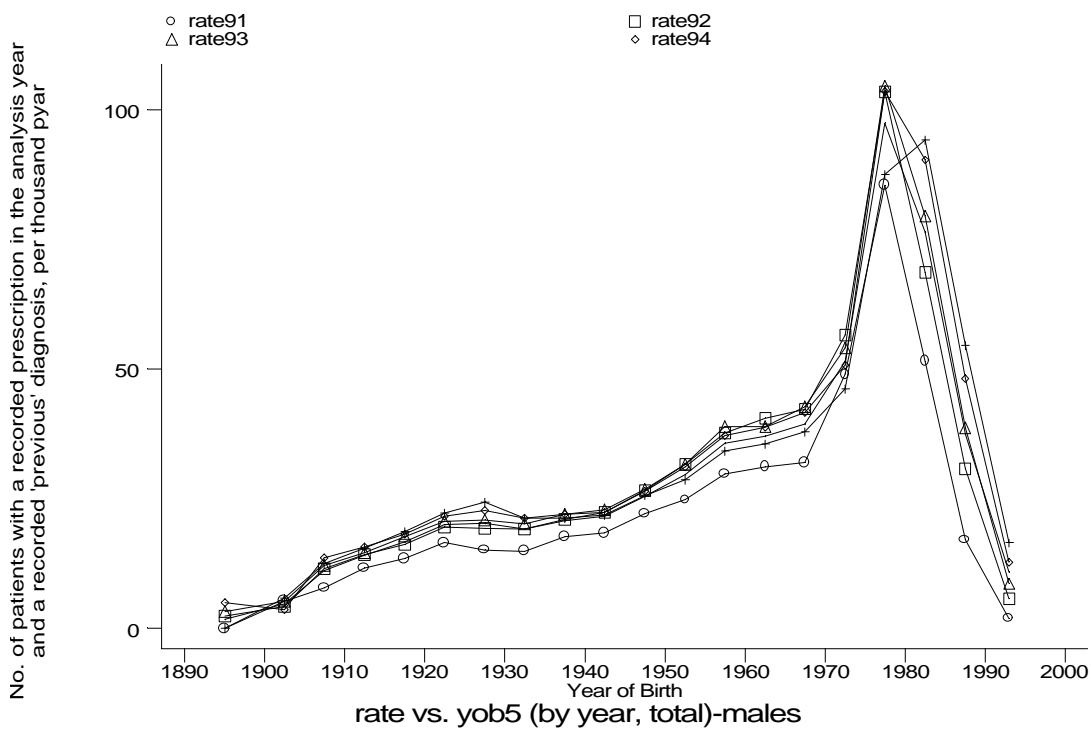
Age-sex distributions, yearly trends and cohort analysis (crude rates)

- GPRD Prescription for hayfever and diagnosis of hayfever, England 1991-95

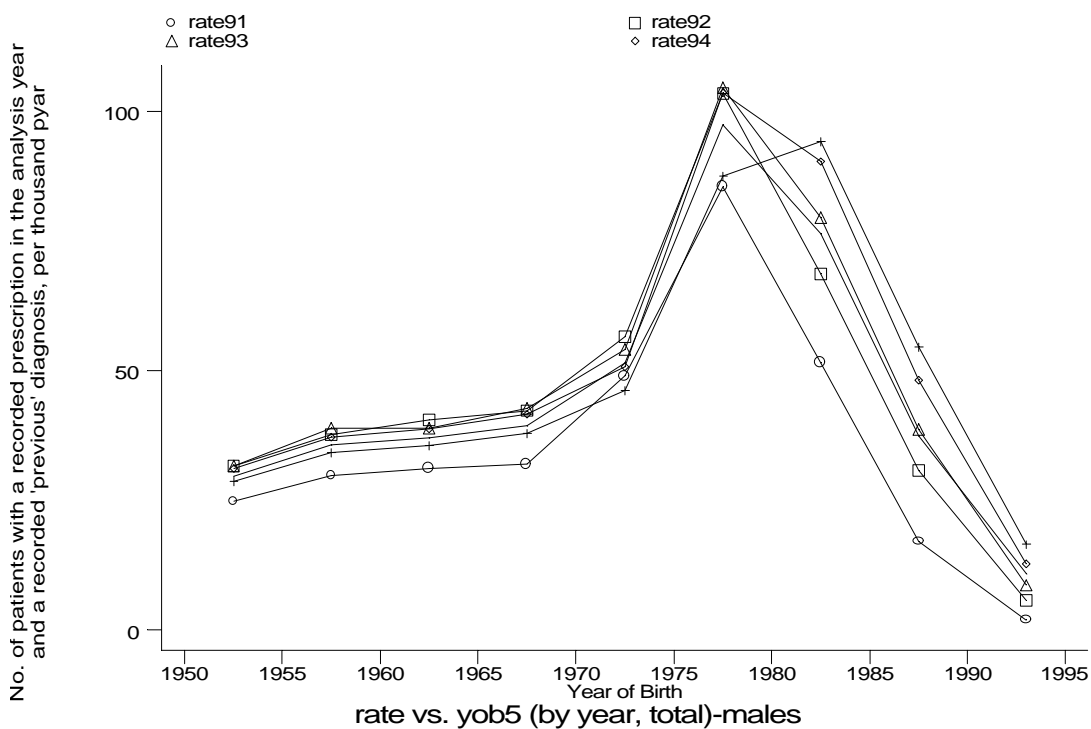


Age-sex distributions, yearly trends and cohort analysis (crude rates)

- GPRD Prescription for hayfever and diagnosis of hayfever, England 1991-95



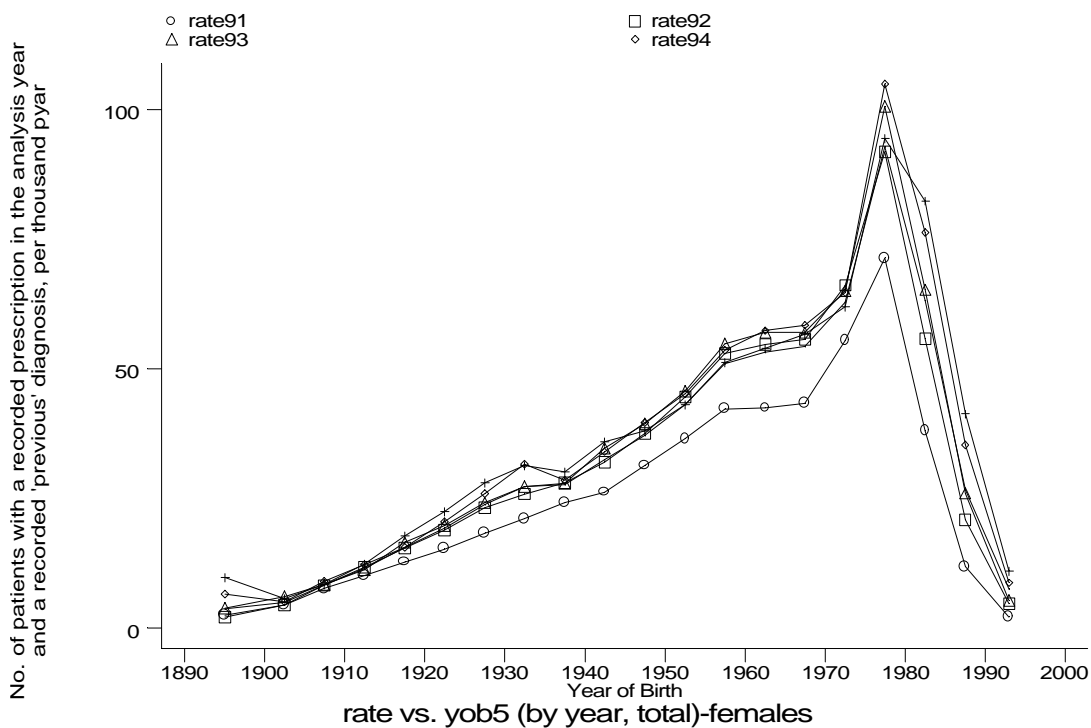
g1c2j1m.gph: MALES
2. HF drugs + 'previous' diag of HF



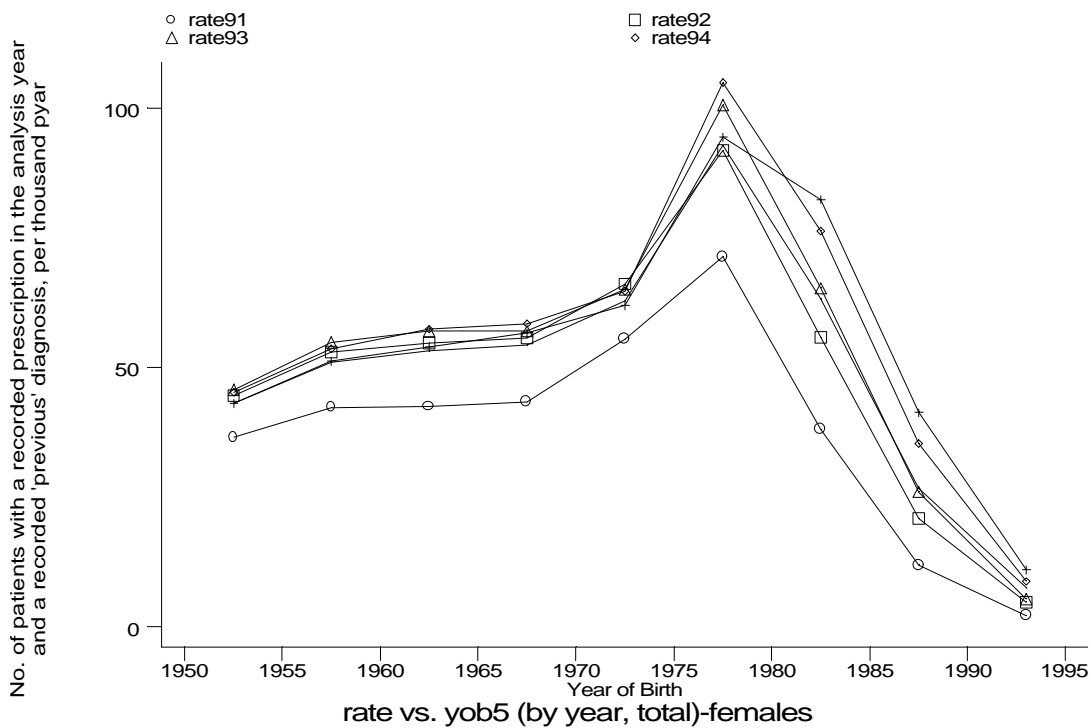
g1c2j2m.gph: MALES
2. HF drugs + 'previous' diag of HF

Age-sex distributions, yearly trends and cohort analysis (crude rates)

- GPRD Prescription for hayfever and diagnosis of hayfever, England 1991-95



g1c2j1f.gph: FEMALES
2. HF drugs + 'previous' diag of HF



g1c2j2f.gph: FEMALES
2. HF drugs + 'previous' diag of HF