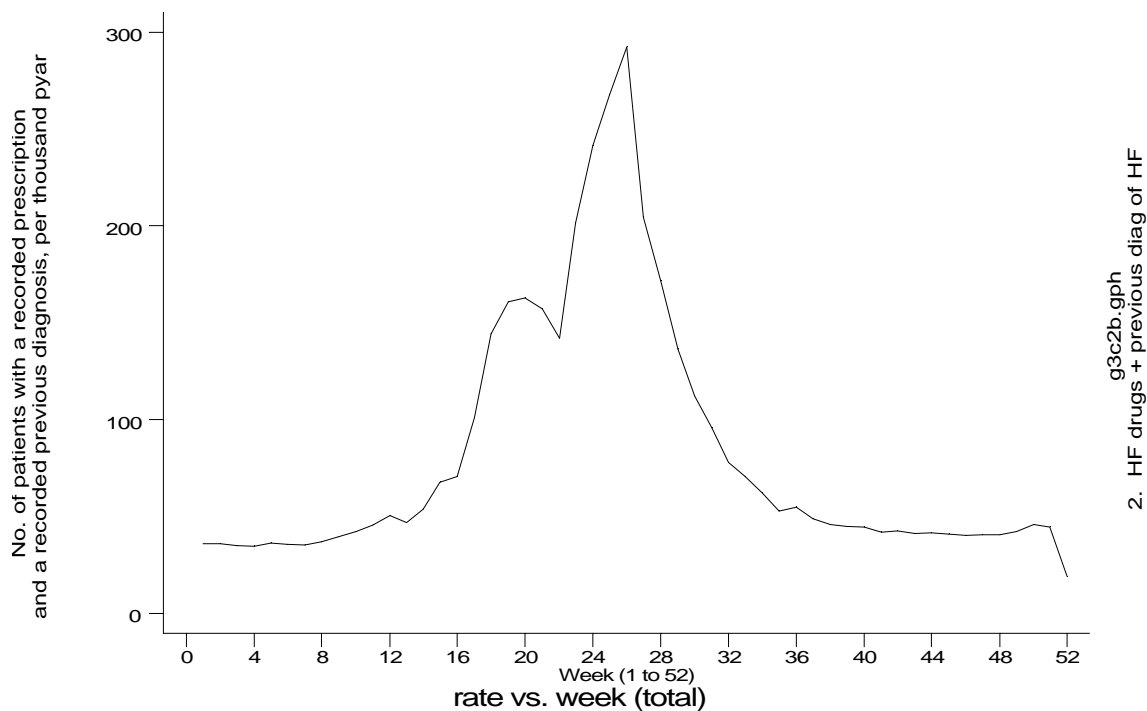
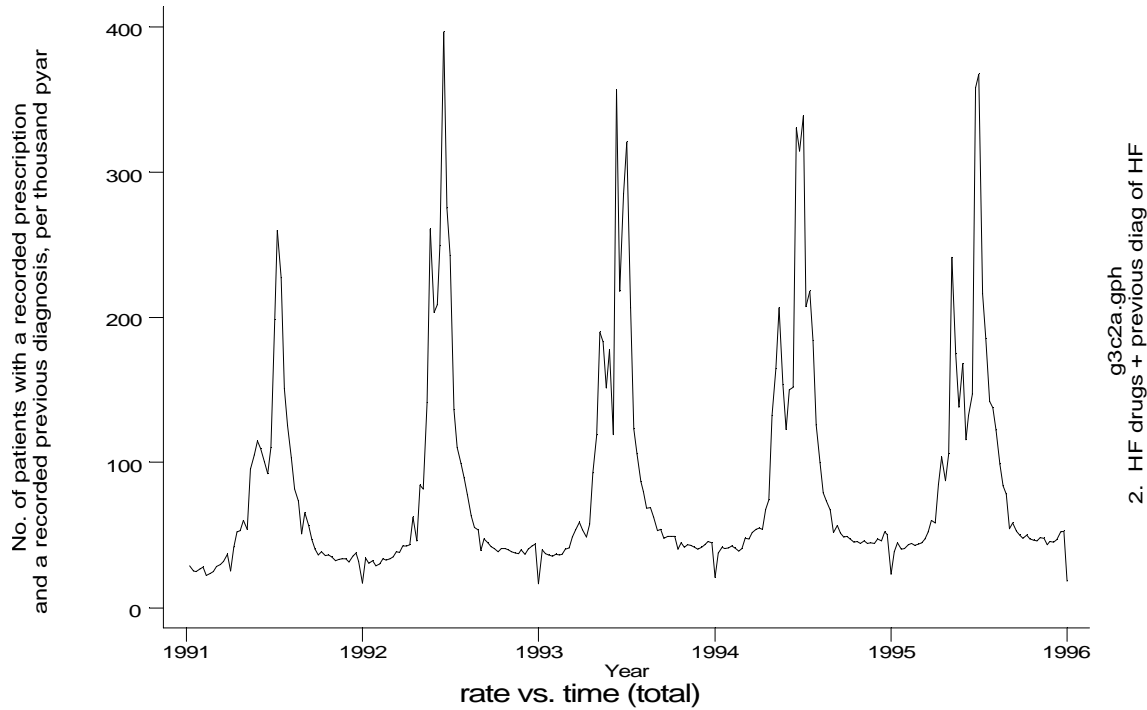


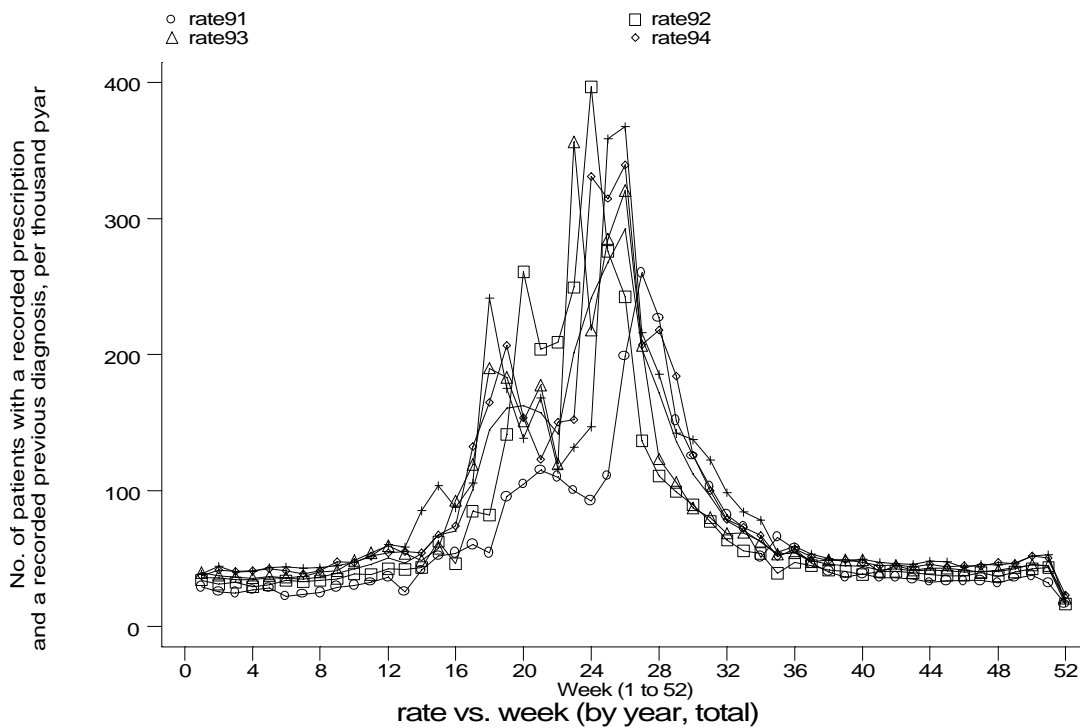
**A8 Hayfever standard output graphs**  
**Seasonality (crude rates by week of year)**

- GPRD Prescription for hayfever and diagnosis of hayfever, England 1991-95



**A8 Hayfever standard output graphs**  
**Seasonality (crude rates by week of year)**

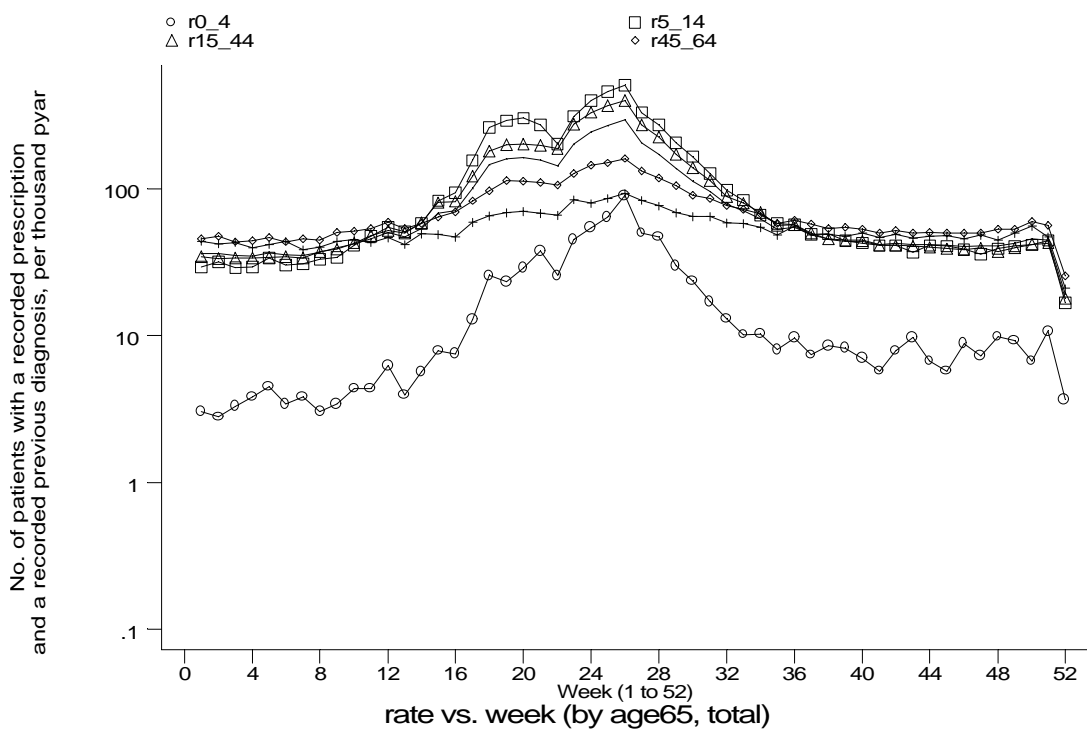
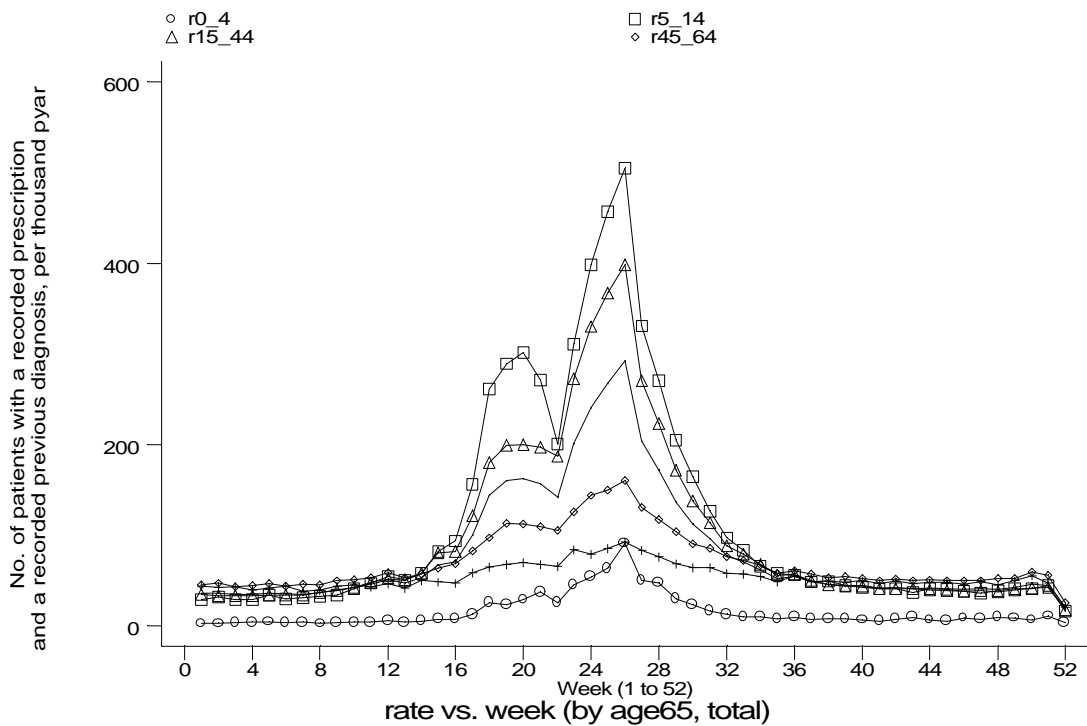
- GPRD Prescription for hayfever and diagnosis of hayfever, England 1991-95



g3c2c.gph  
2. HF drugs + previous diag of HF

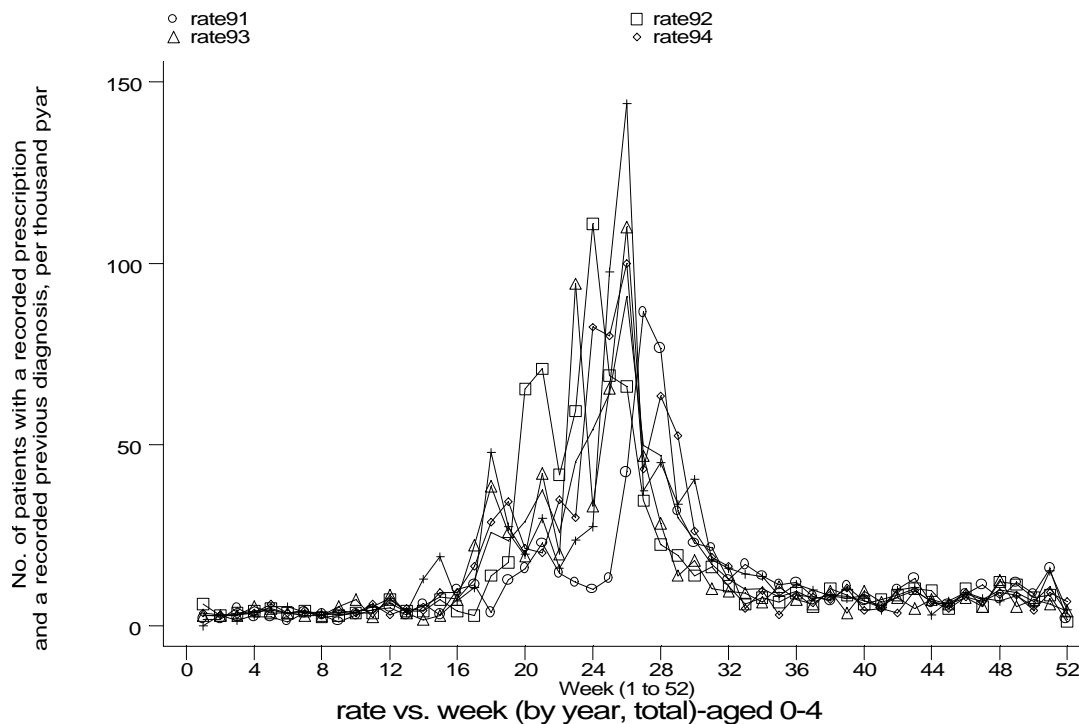
**A8 Hayfever standard output graphs**  
**Seasonality (crude rates by week of year)**

- GPRD Prescription for hayfever and diagnosis of hayfever, England 1991-95

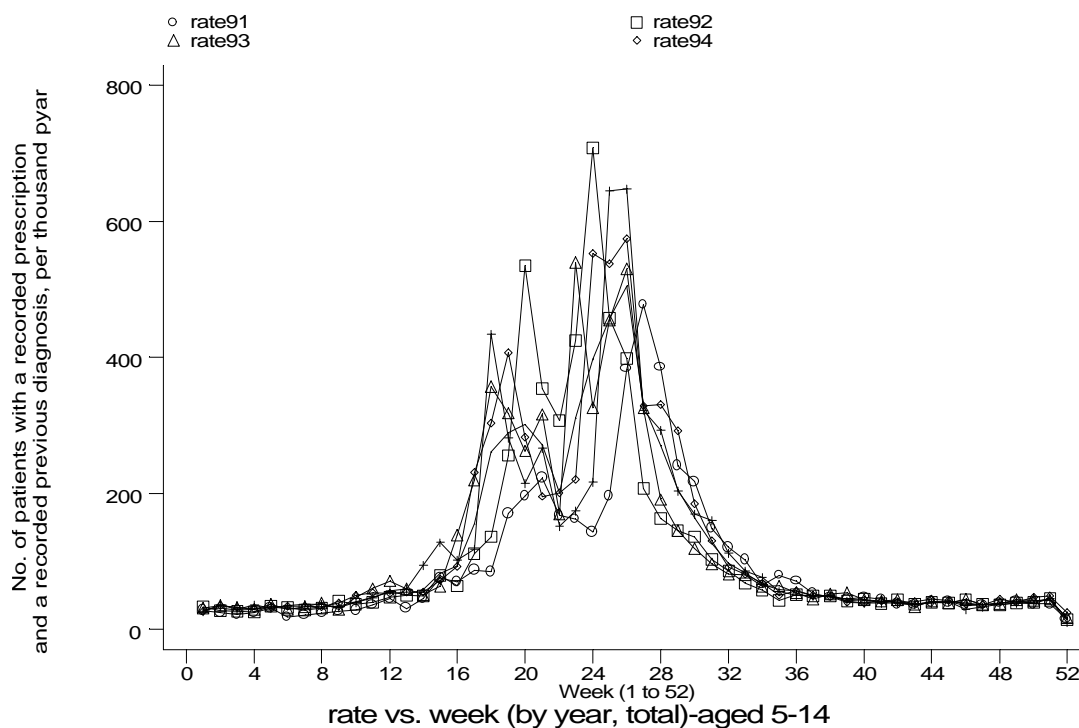


**A8 Hayfever standard output graphs**  
**Seasonality (crude rates by week of year)**

- GPRD Prescription for hayfever and diagnosis of hayfever, England 1991-95



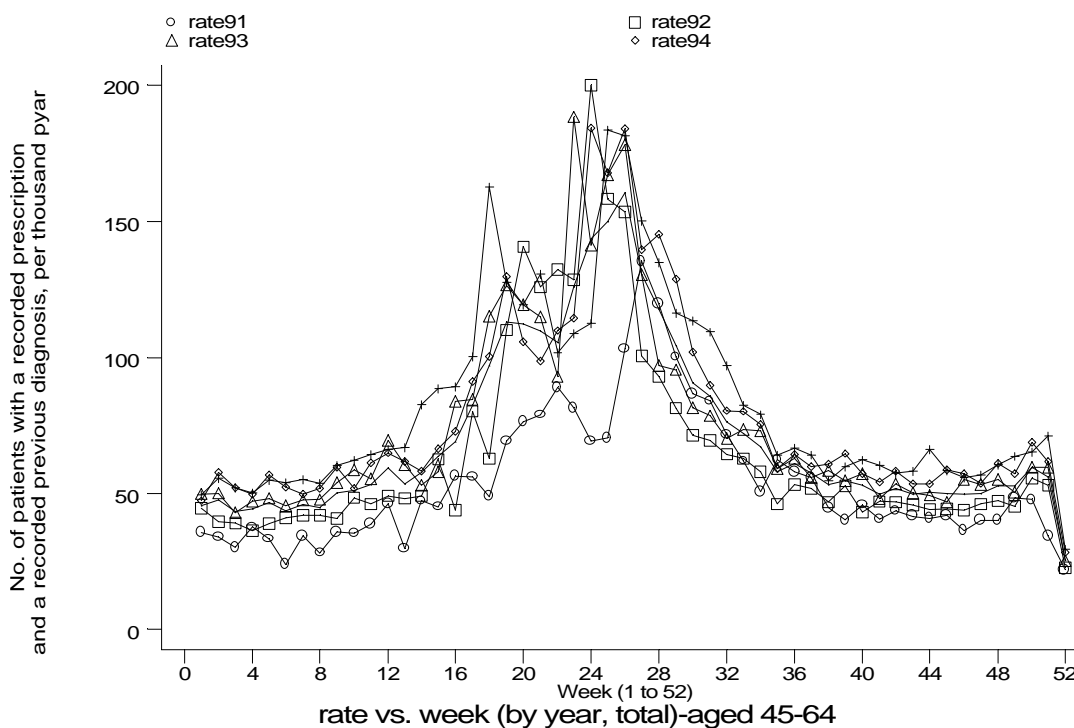
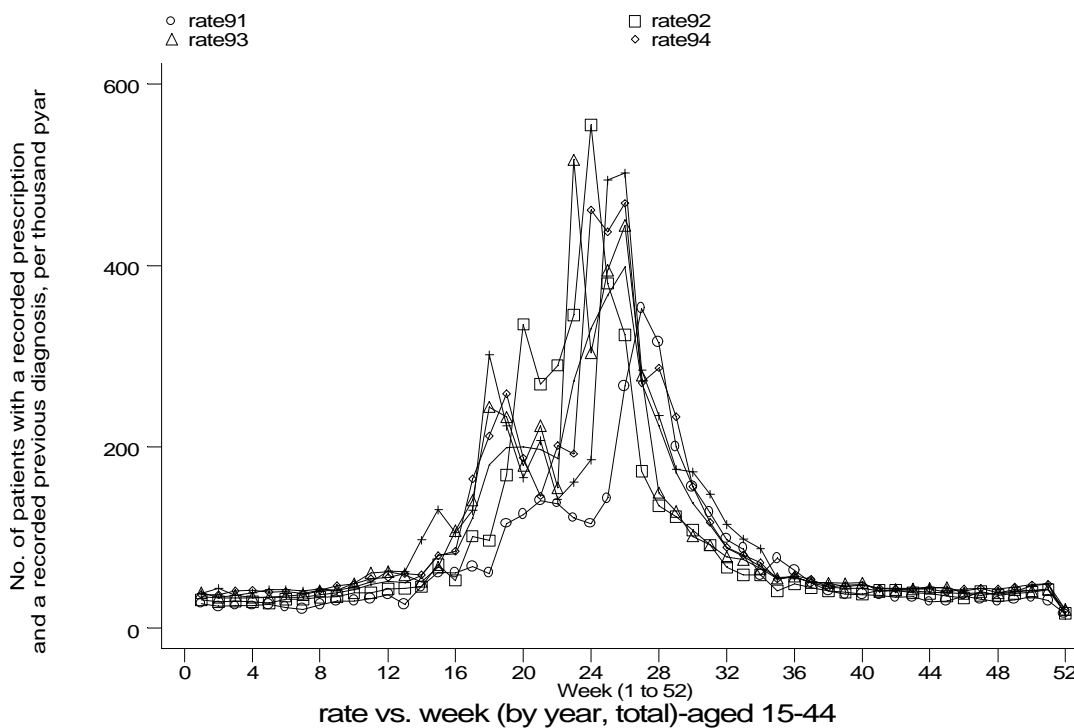
g3c2f1.gph: AGED 0-4  
2. HF drugs + previous diag of HF



g3c2f2.gph: AGED 5-14  
2. HF drugs + previous diag of HF

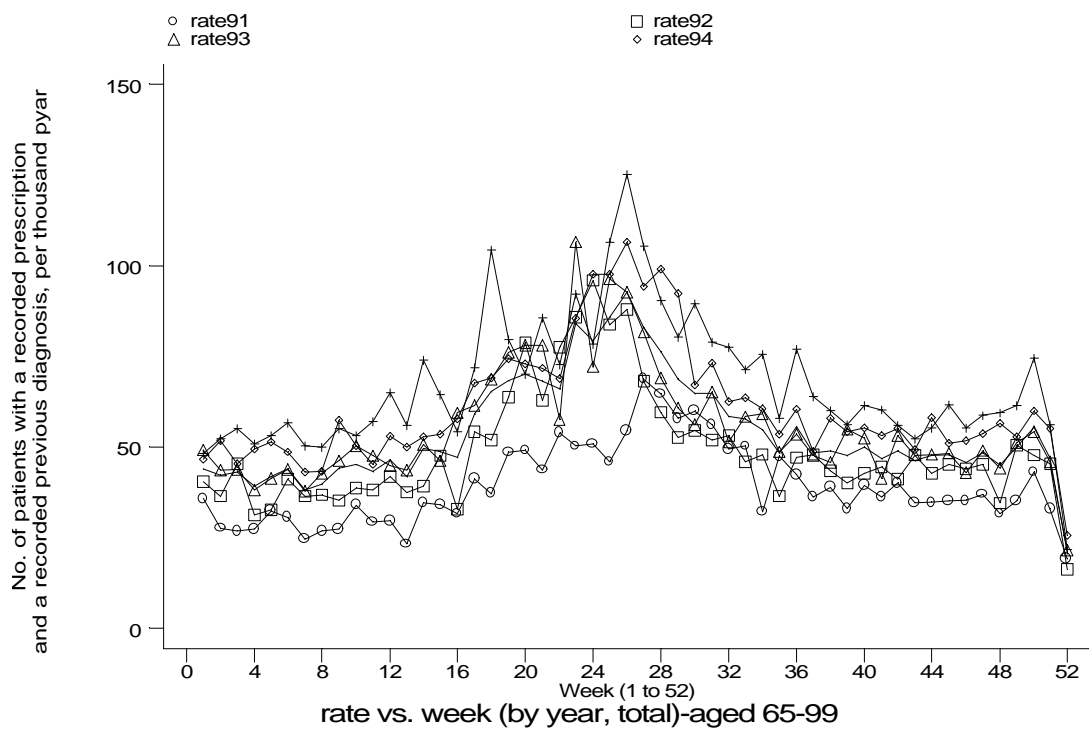
**A8 Hayfever standard output graphs**  
**Seasonality (crude rates by week of year)**

- GPRD Prescription for hayfever and diagnosis of hayfever, England 1991-95



**A8 Hayfever standard output graphs**  
**Seasonality (crude rates by week of year)**

- GPRD Prescription for hayfever and diagnosis of hayfever, England 1991-95



g3c2f5.gph: AGED 65-89  
2. HF drugs + previous diag of HF