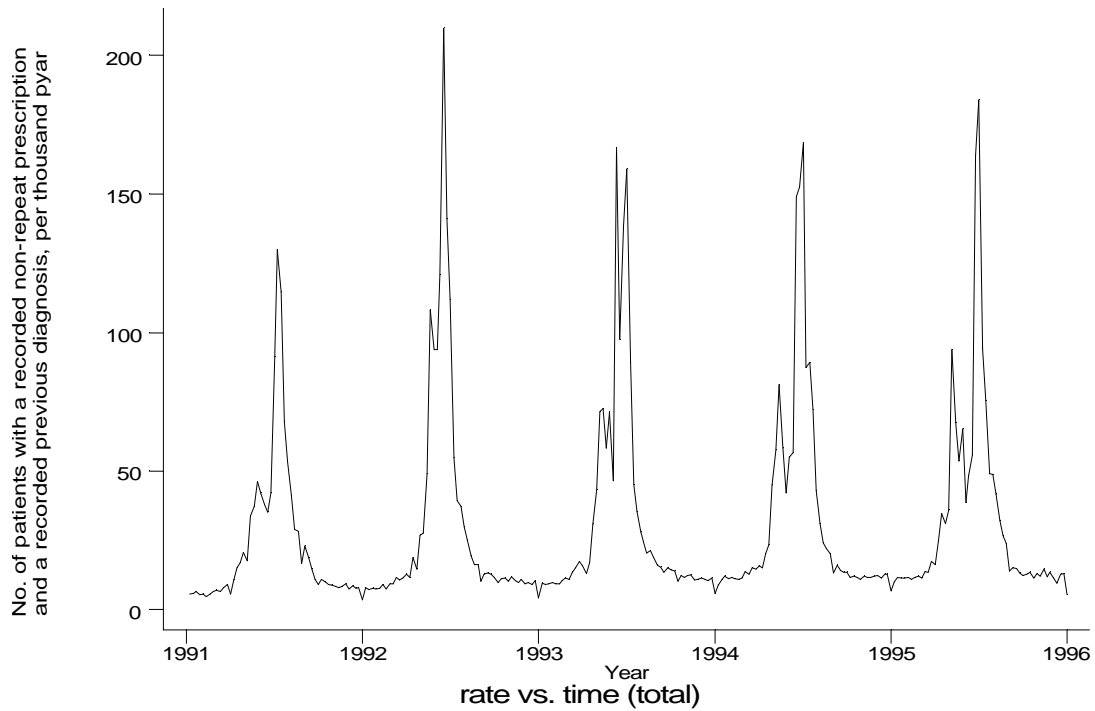
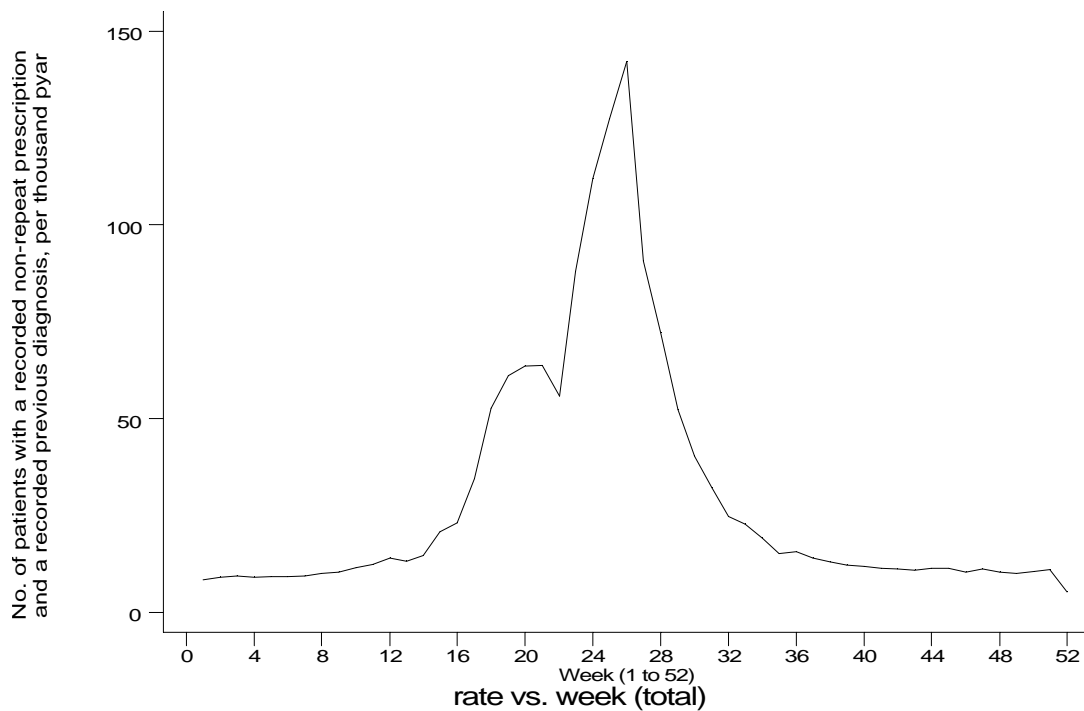


A8 Hayfever standard output graphs
Seasonality (crude rates by week of year)

- GPRD Non-repeat prescription for hayfever and diagnosis of hayfever, England 1991-95



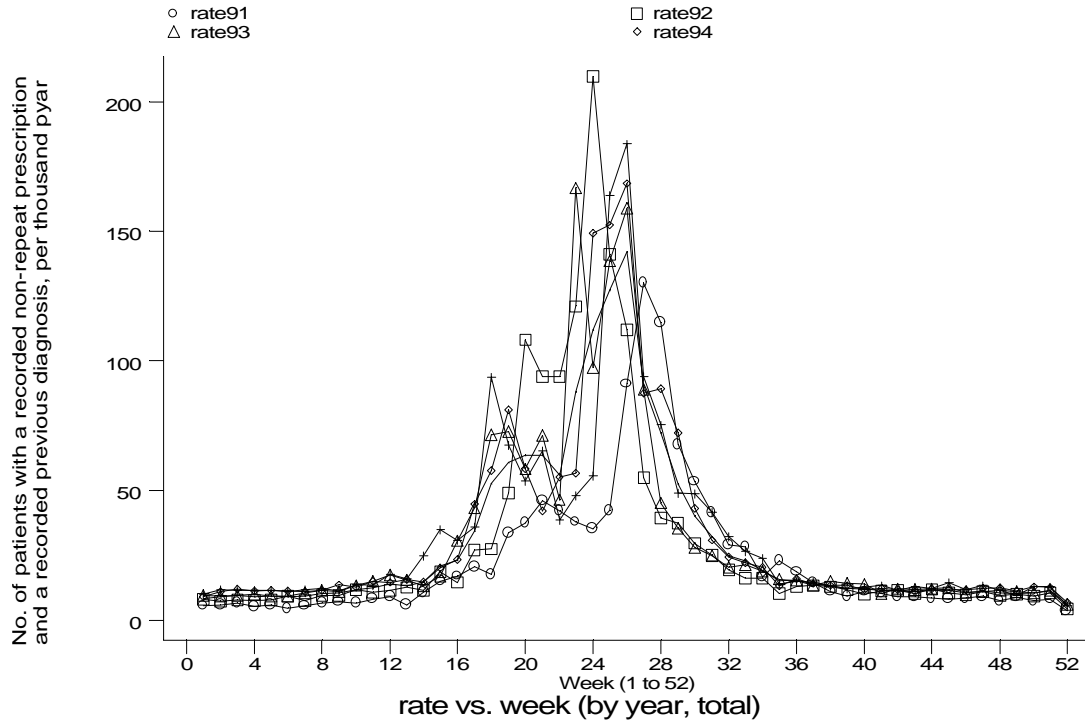
g3d2a.gph
2. HF drugs + previous diag of HF



g3d2b.gph
2. HF drugs + previous diag of HF

A8 Hayfever standard output graphs
Seasonality (crude rates by week of year)

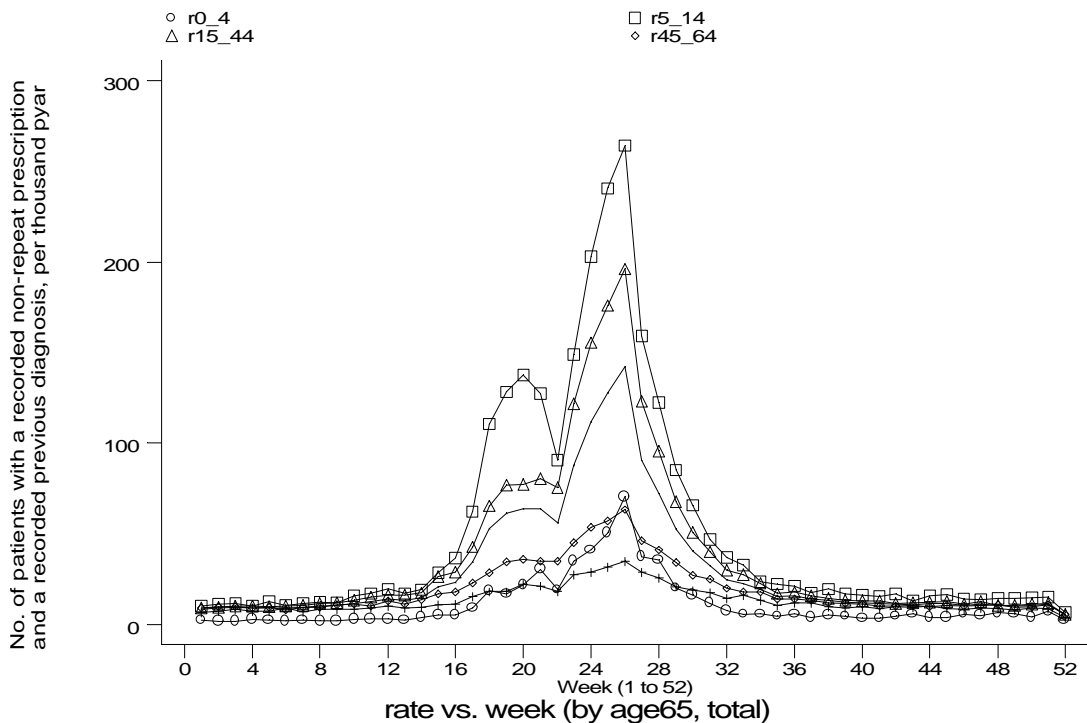
- GPRD Non-repeat prescription for hayfever and diagnosis of hayfever, England 1991-95



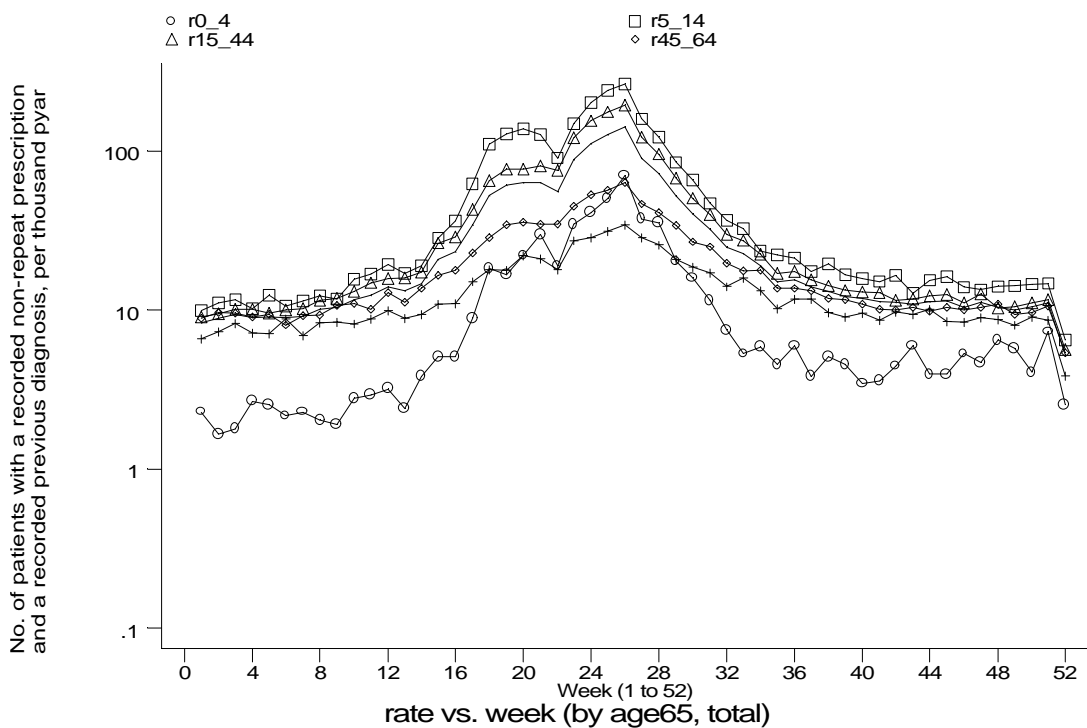
g3d2c.gph
2. HF drugs + previous diag of HF

A8 Hayfever standard output graphs
Seasonality (crude rates by week of year)

- GPRD Non-repeat prescription for hayfever and diagnosis of hayfever, England 1991-95



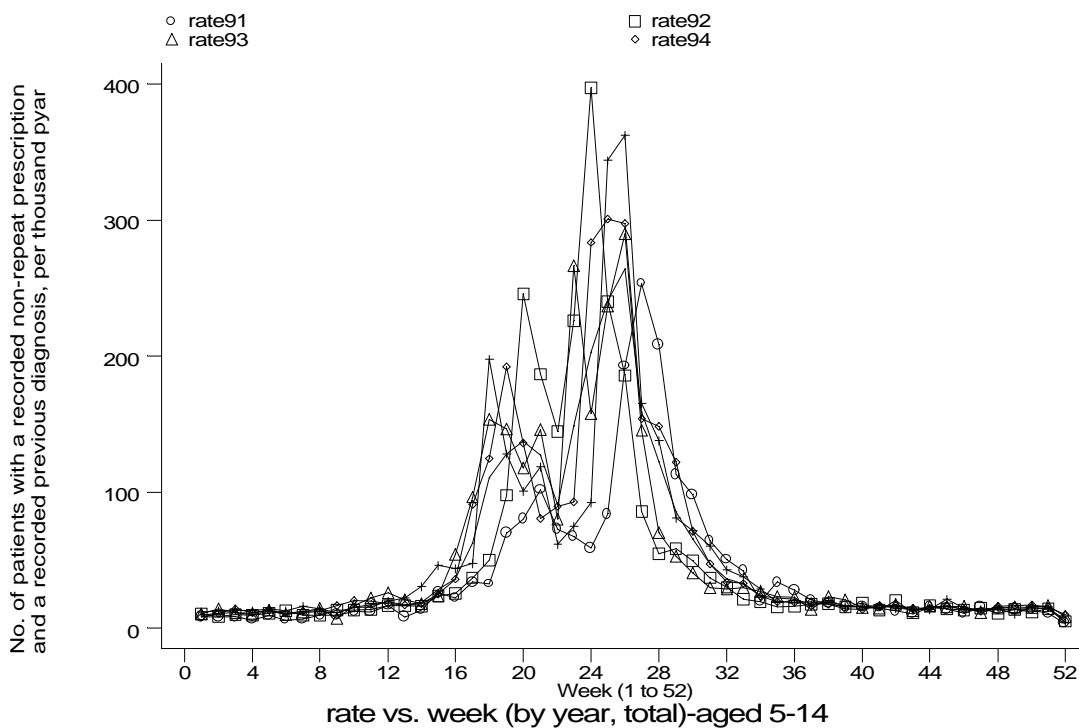
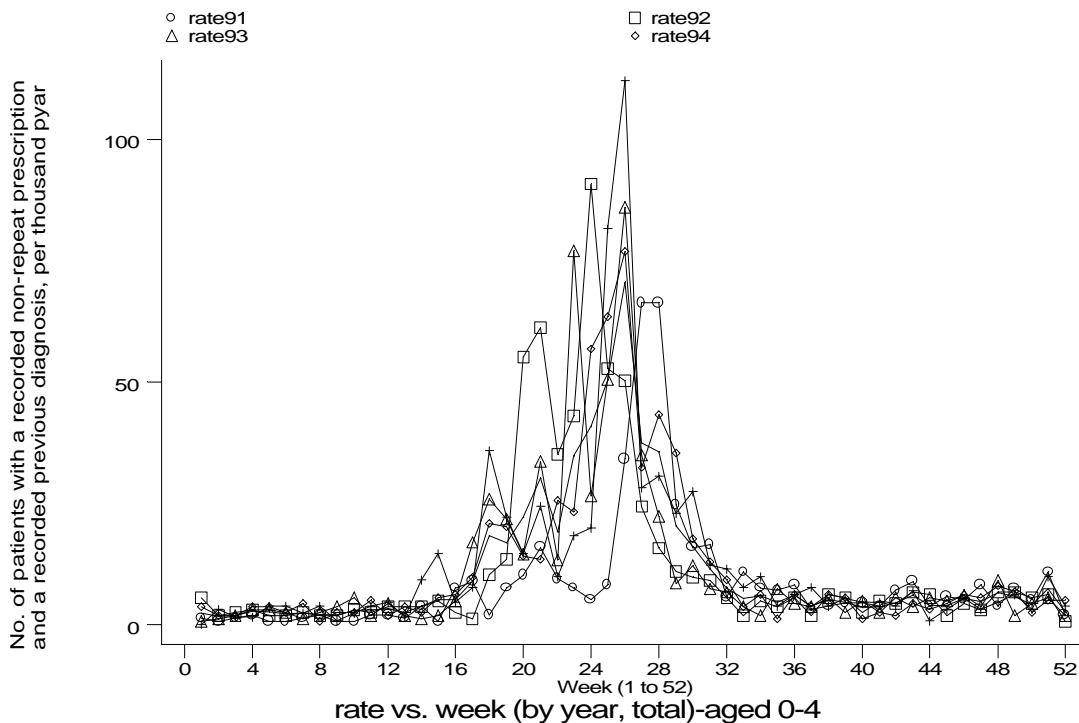
g3d2d.gph
 2. HF drugs + previous diag of HF



g3d2e.gph
 2. HF drugs + previous diag of HF

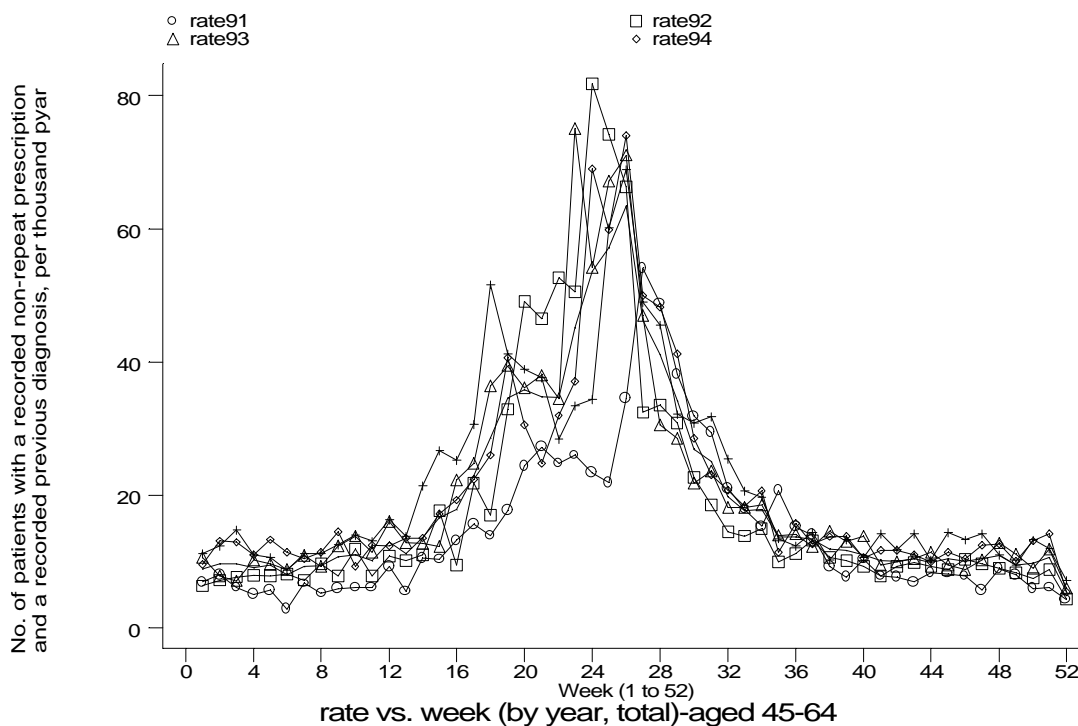
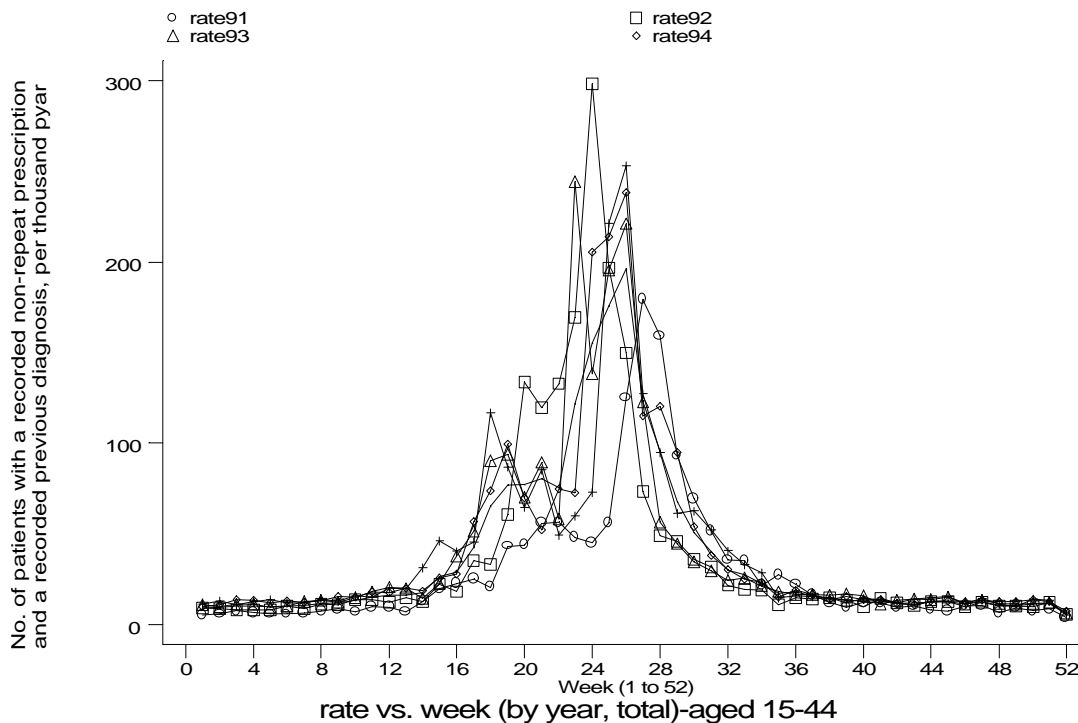
A8 Hayfever standard output graphs
Seasonality (crude rates by week of year)

- GPRD Non-repeat prescription for hayfever and diagnosis of hayfever, England 1991-95



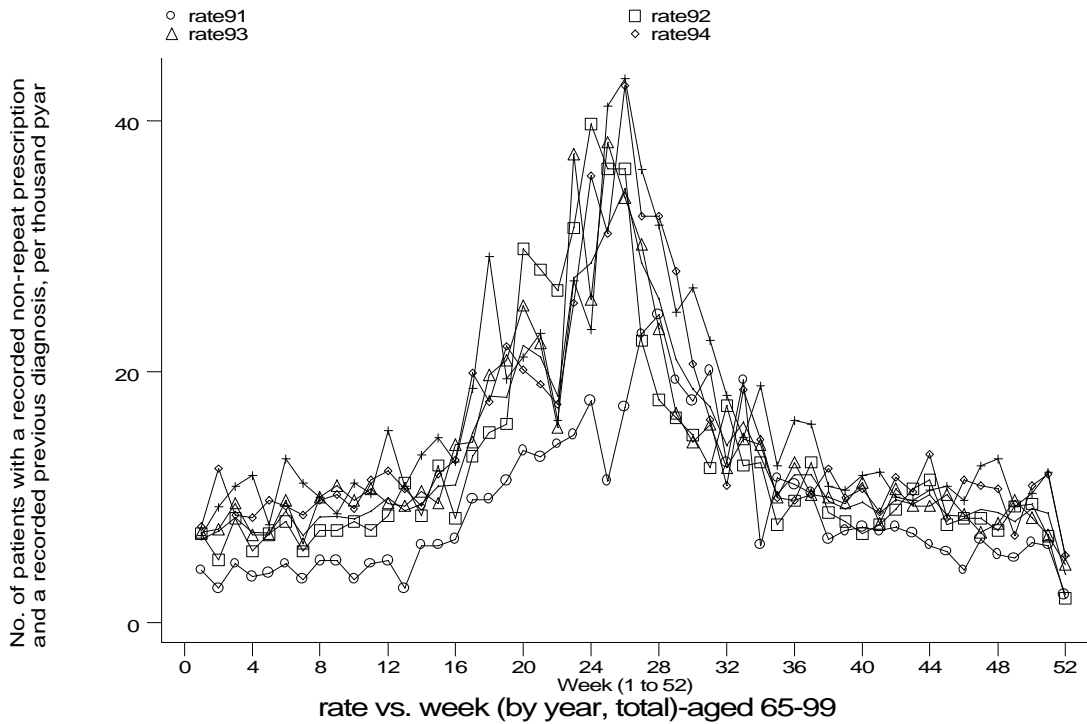
A8 Hayfever standard output graphs
Seasonality (crude rates by week of year)

- GPRD Non-repeat prescription for hayfever and diagnosis of hayfever, England 1991-95



A8 Hayfever standard output graphs
Seasonality (crude rates by week of year)

- GPRD Non-repeat prescription for hayfever and diagnosis of hayfever, England 1991-95



g3d2f5.gph: AGED 65-89
2. HF drugs + previous diag of HF