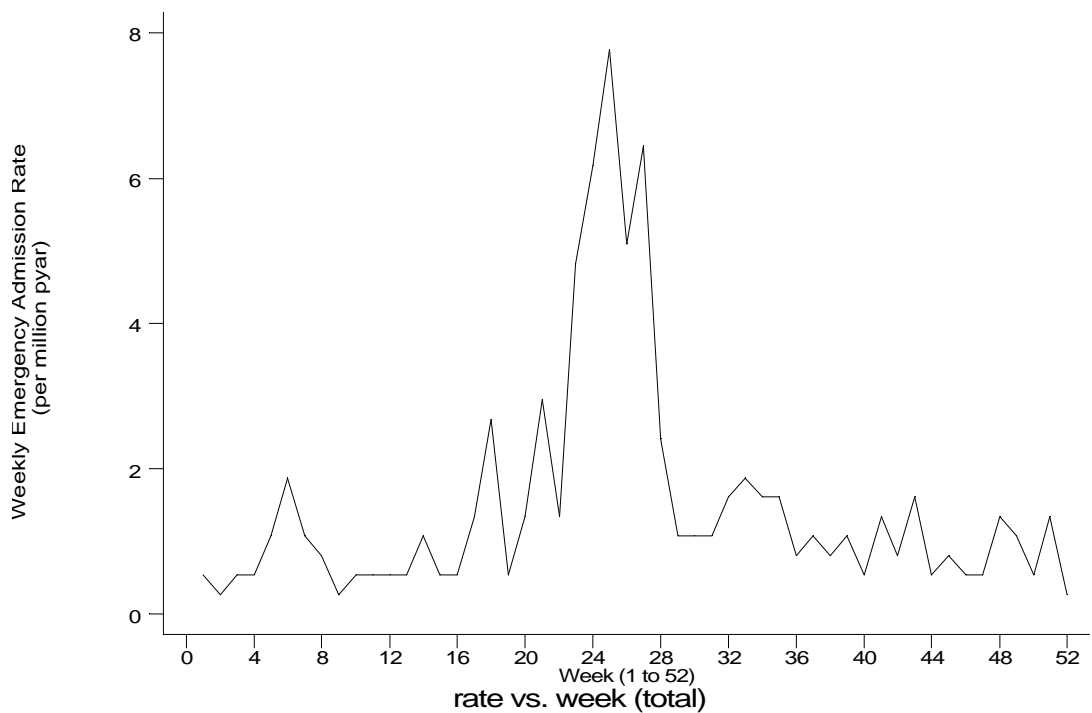
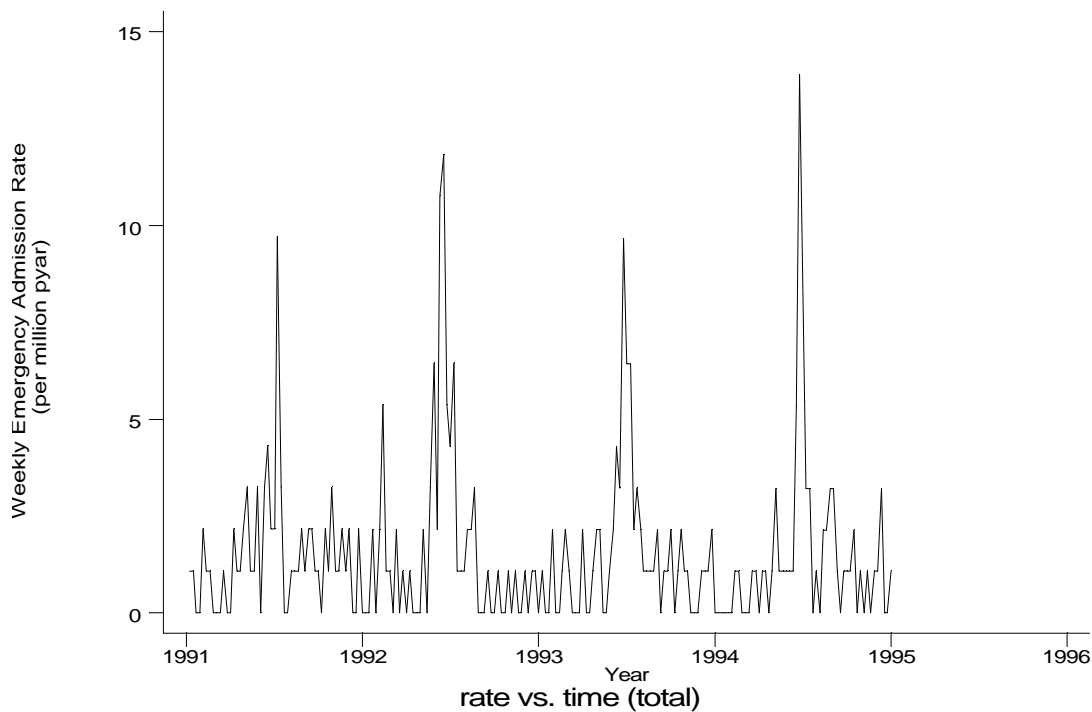


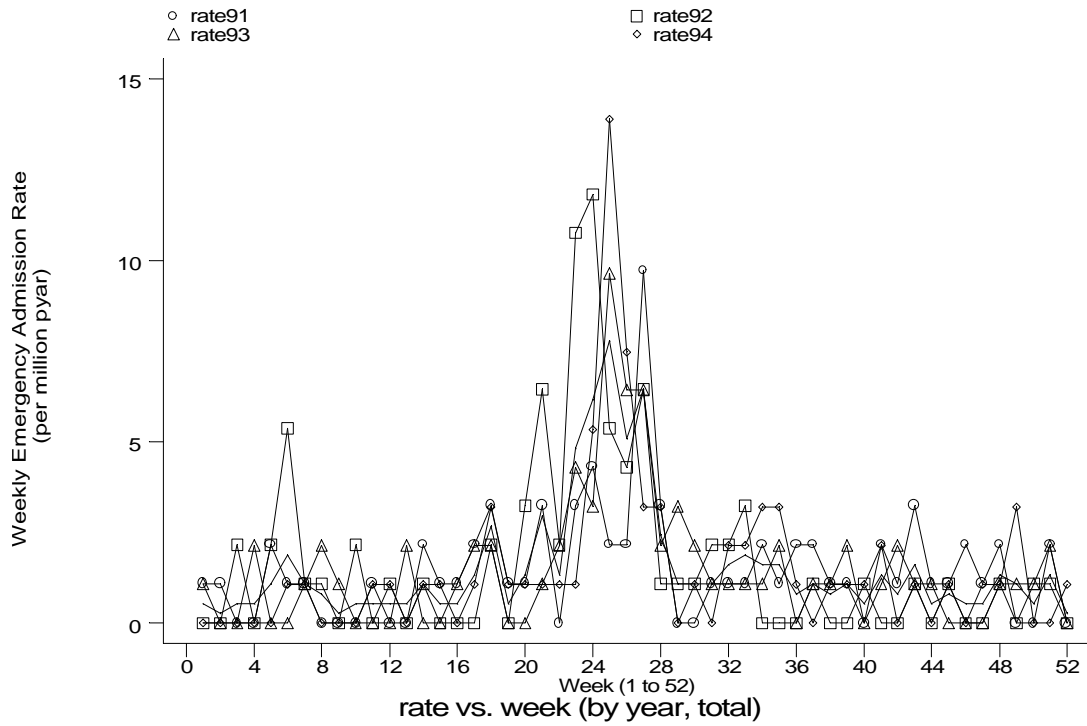
**A8 Hayfever standard output graphs**  
**Seasonality (crude rates by week of year)**

- **HES Emergency admissions, England 1991-94**



**A8 Hayfever standard output graphs**  
**Seasonality (crude rates by week of year)**

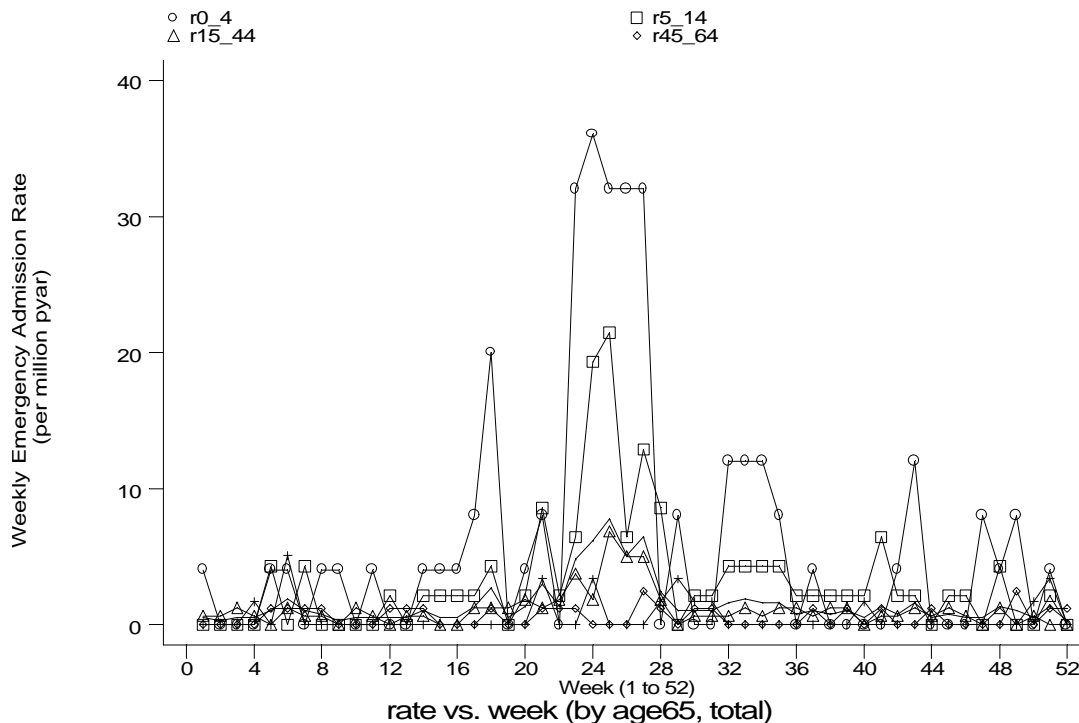
- **HES Emergency admissions, England 1991-94**



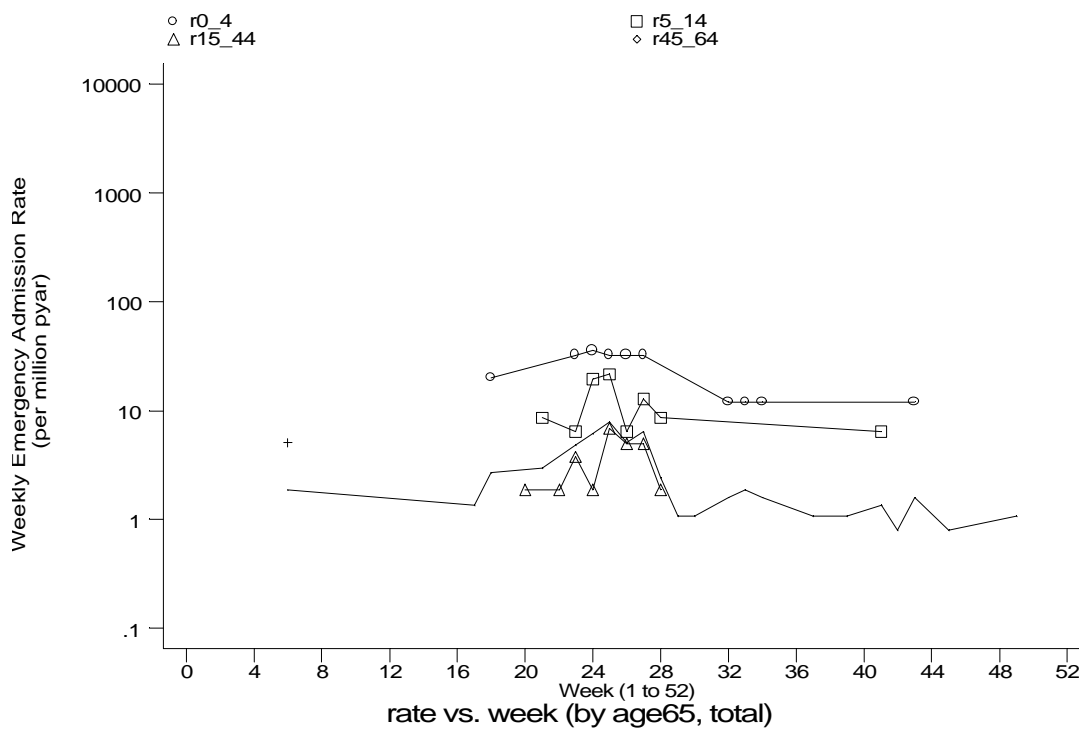
h3e5c.gph  
5. Hayfever or allergic rhinitis

**A8 Hayfever standard output graphs**  
**Seasonality (crude rates by week of year)**

- HES Emergency admissions, England 1991-94



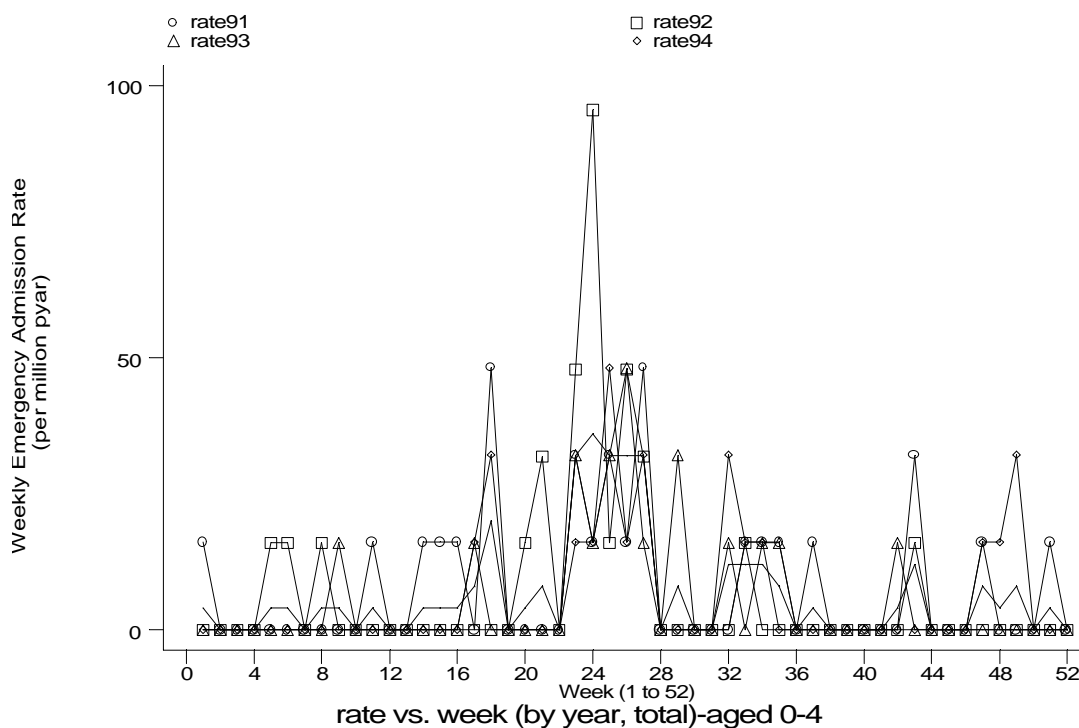
h3e5d.gph  
 5. Hayfever or allergic rhinitis



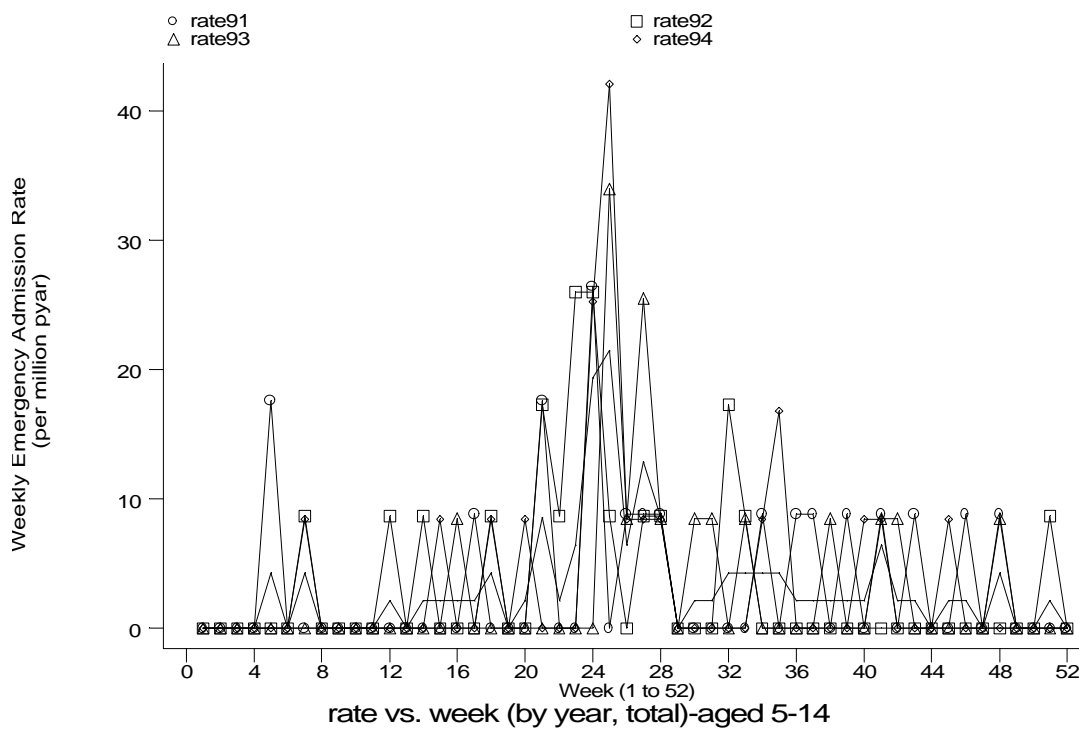
h3e5e.gph  
 5. Hayfever or allergic rhinitis

# A8 Hayfever standard output graphs Seasonality (crude rates by week of year)

- HES Emergency admissions, England 1991-94



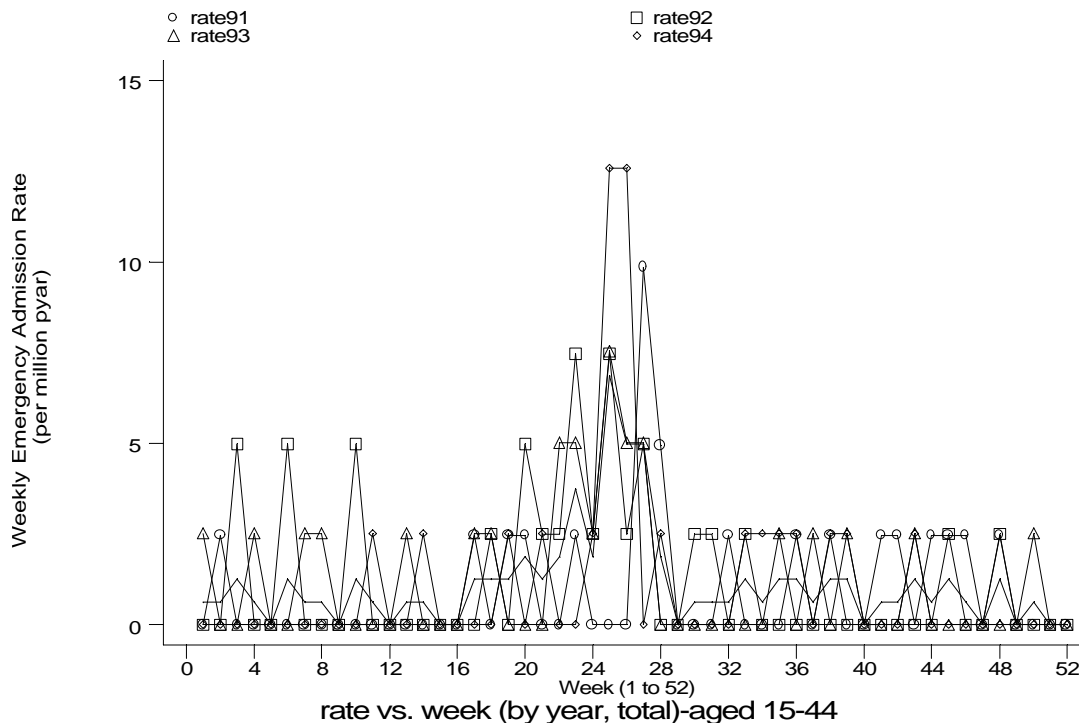
h3e5f1.gph: AGED 0-4  
5. Hayfever or allergic rhinitis



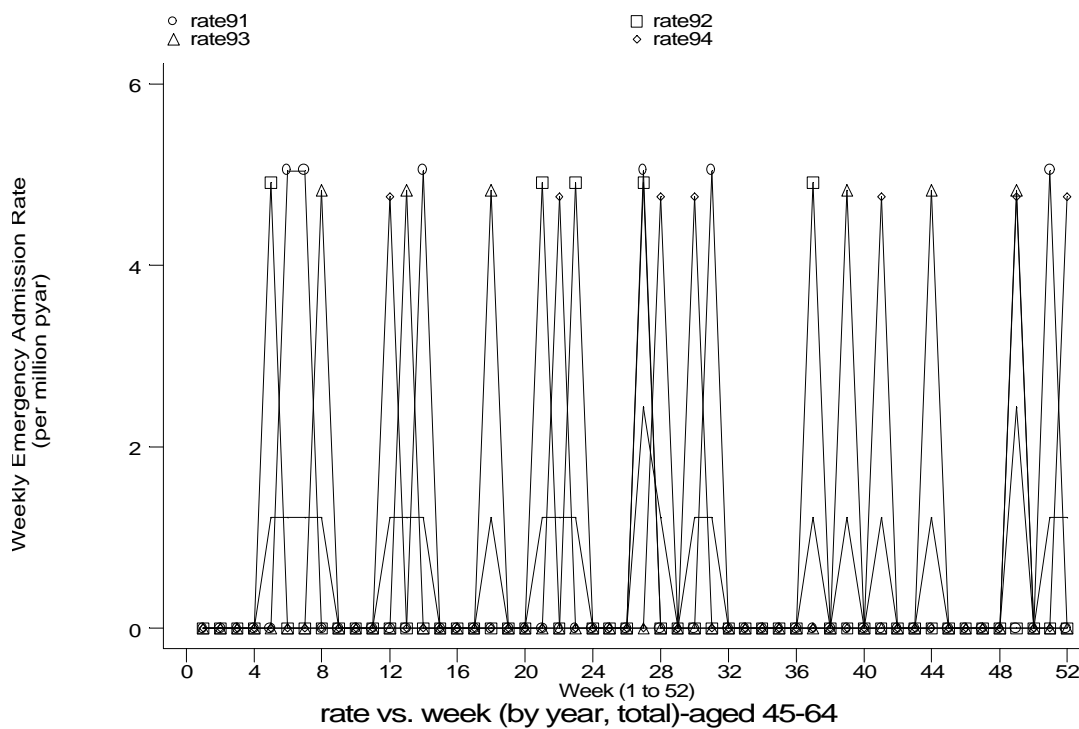
h3e5f2.gph: AGED 5-14  
5. Hayfever or allergic rhinitis

**A8 Hayfever standard output graphs**  
**Seasonality (crude rates by week of year)**

- HES Emergency admissions, England 1991-94



h3e5f3.gph: AGED 15-44  
5. Hayfever or allergic rhinitis



h3e5f4.gph: AGED 45-64  
5. Hayfever or allergic rhinitis

**A8 Hayfever standard output graphs**  
**Seasonality (crude rates by week of year)**

- **HES Emergency admissions, England 1991-94**

