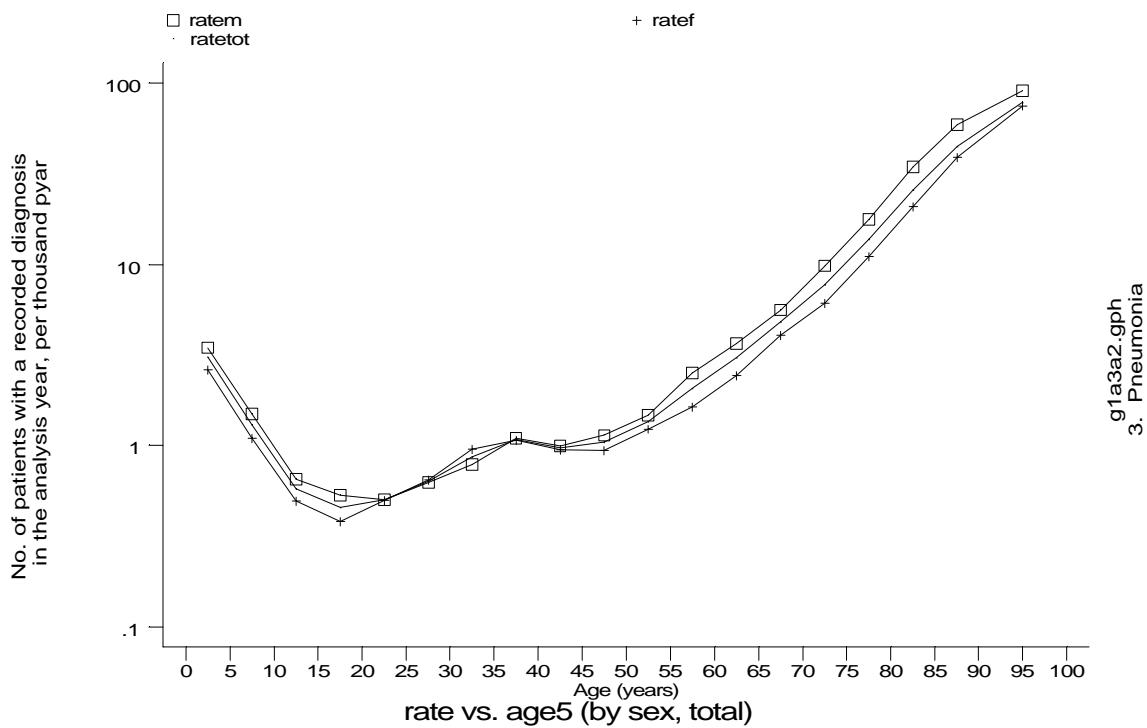
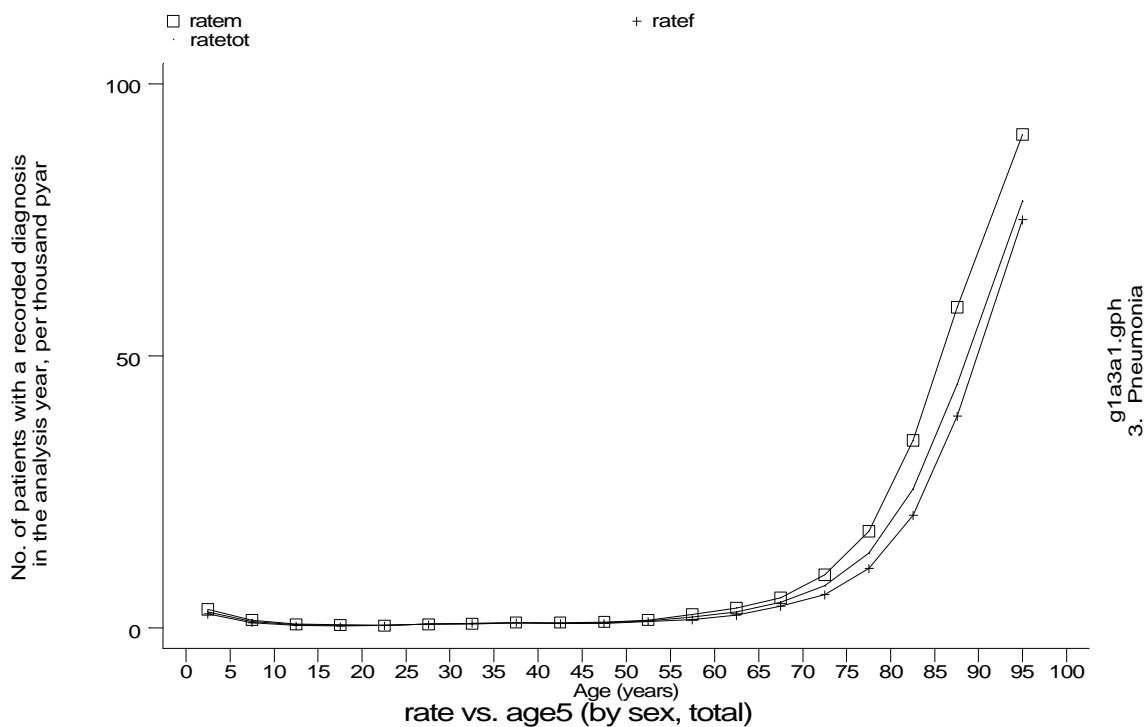


A9 Pneumonia standard output graphs

Age-sex distributions, yearly trends and cohort analysis (crude rates)

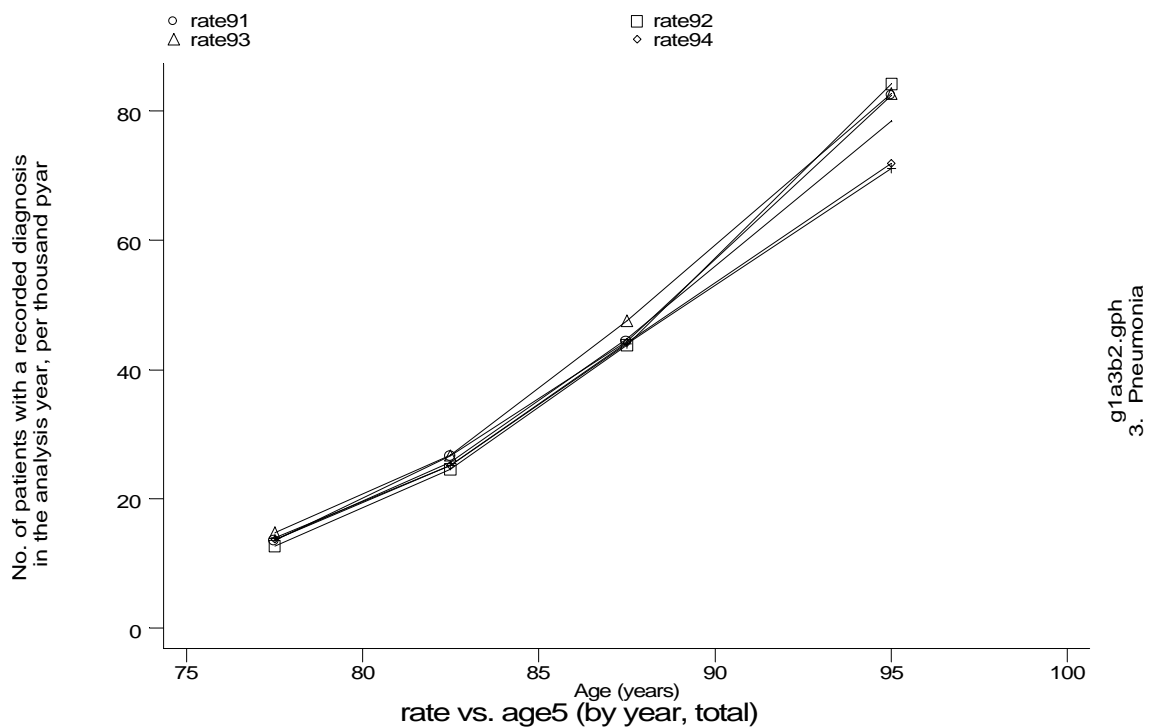
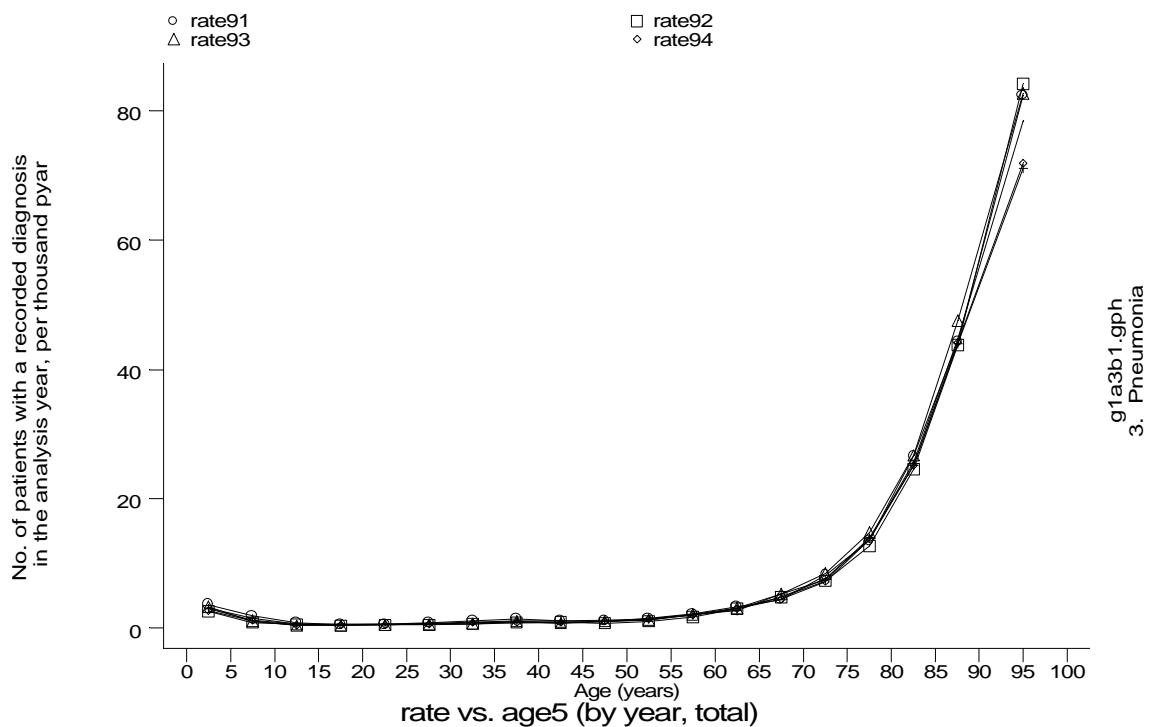
- GPRD Diagnosis, England 1991-95



A9 Pneumonia standard output graphs

Age-sex distributions, yearly trends and cohort analysis (crude rates)

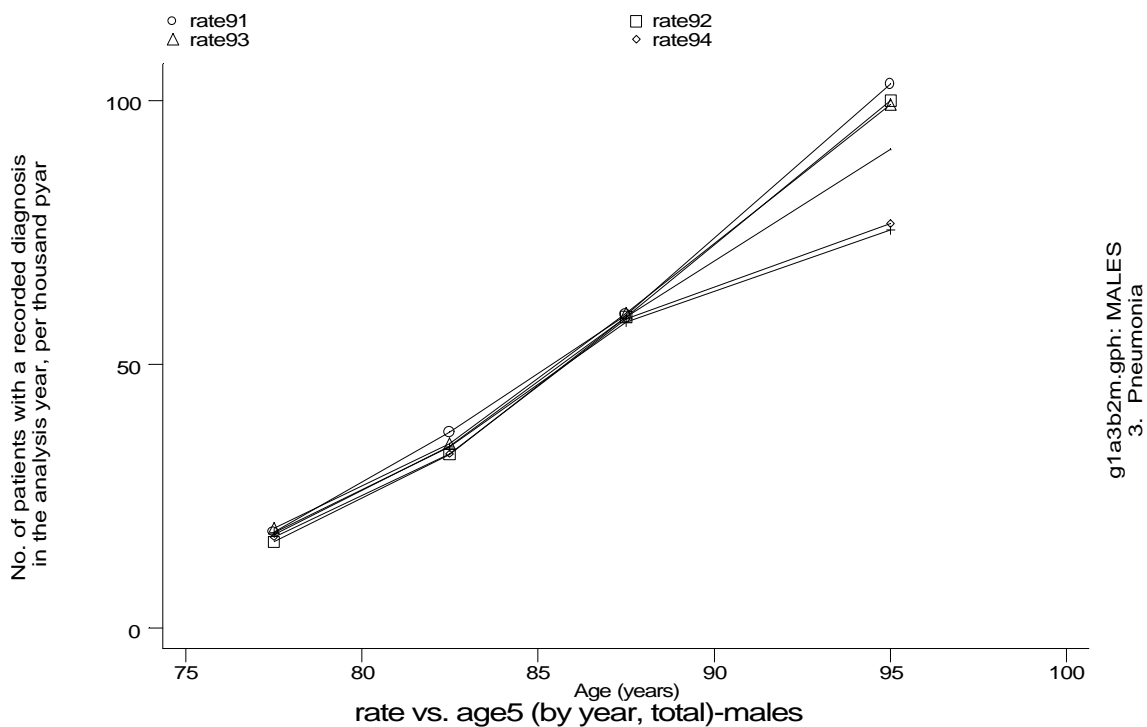
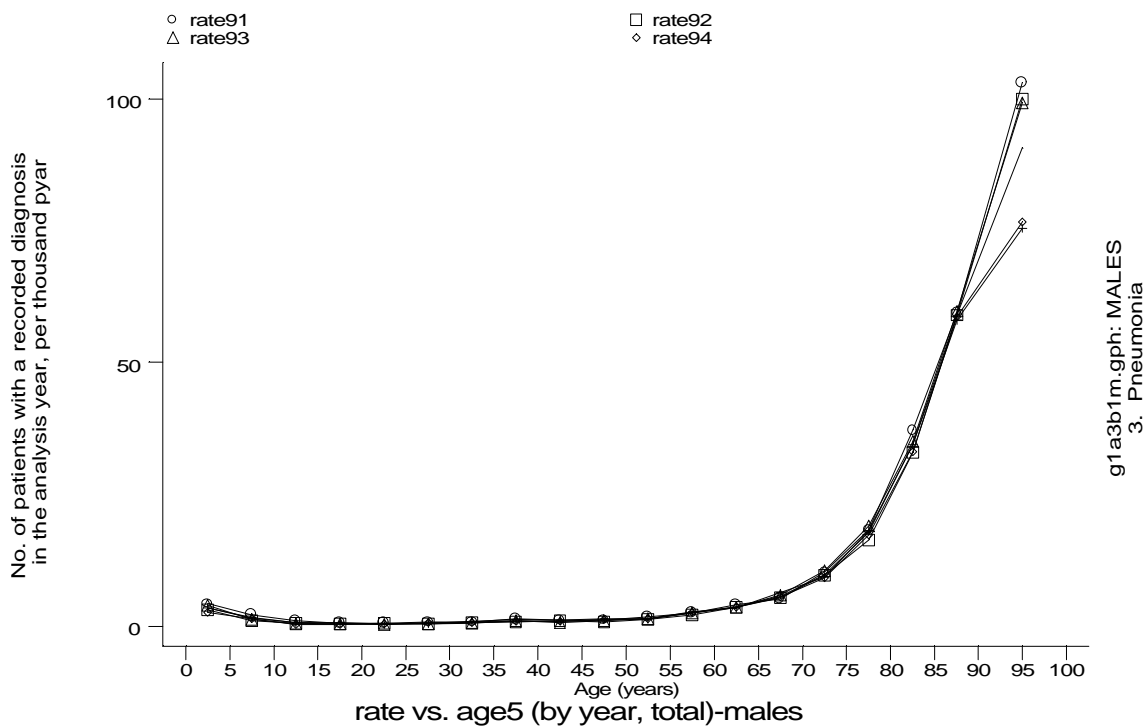
- GPRD Diagnosis, England 1991-95



A9 Pneumonia standard output graphs

Age-sex distributions, yearly trends and cohort analysis (crude rates)

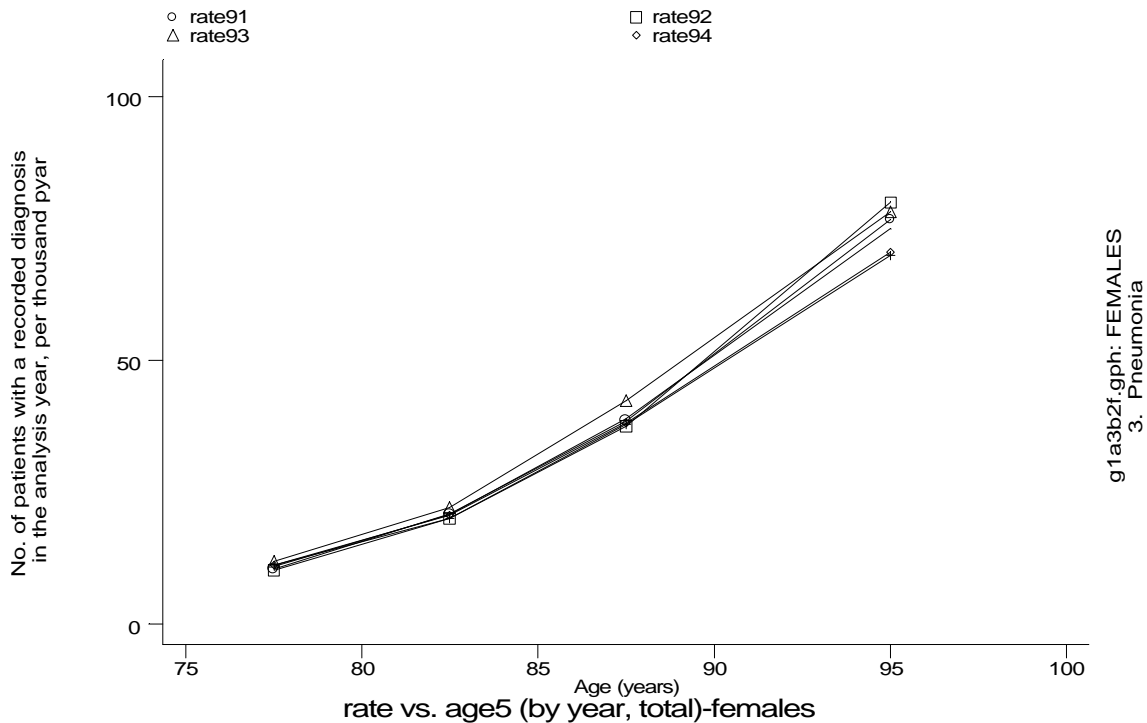
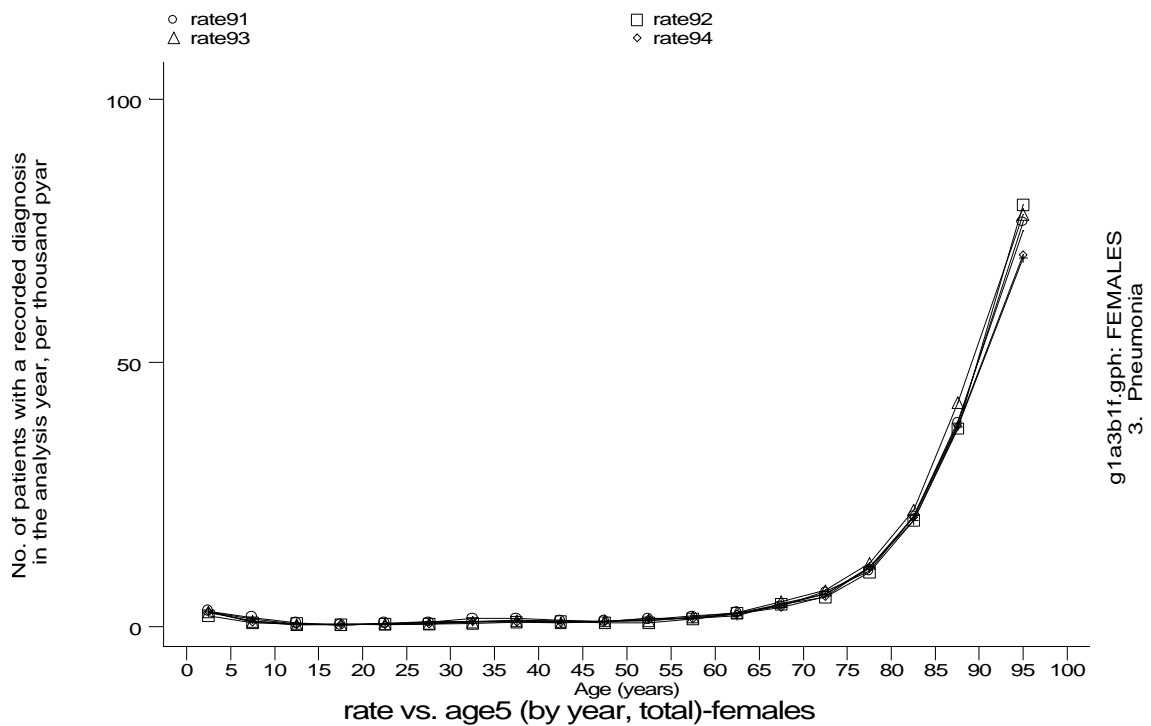
- GPRD Diagnosis, England 1991-95



A9 Pneumonia standard output graphs

Age-sex distributions, yearly trends and cohort analysis (crude rates)

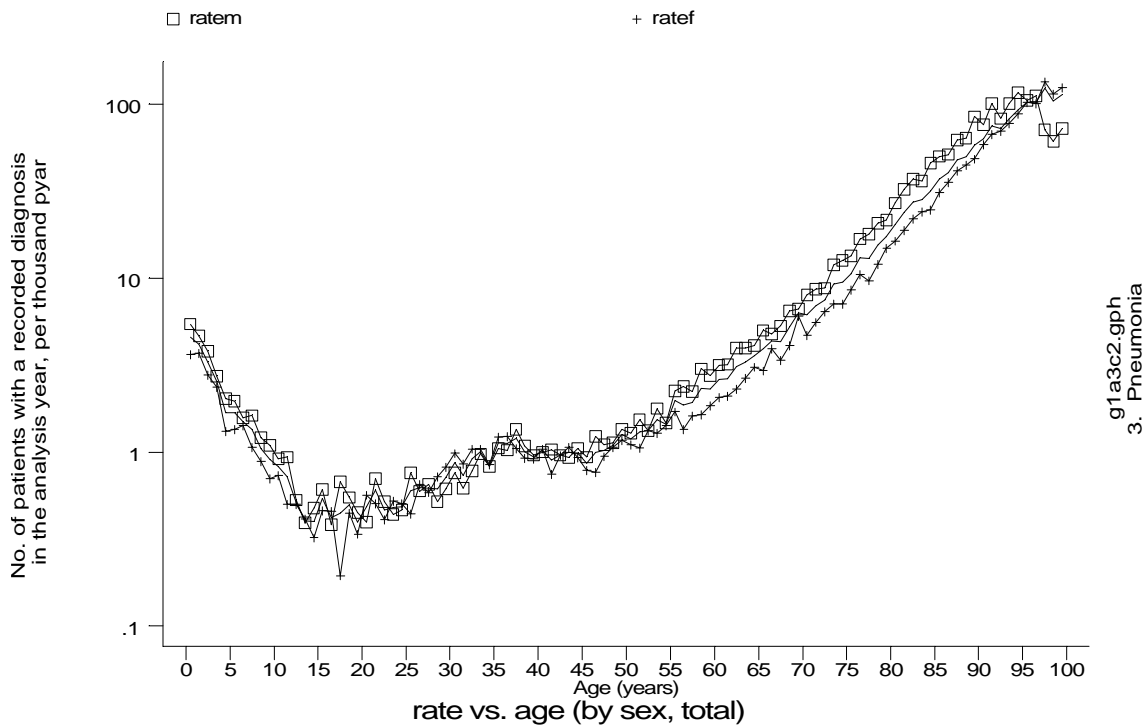
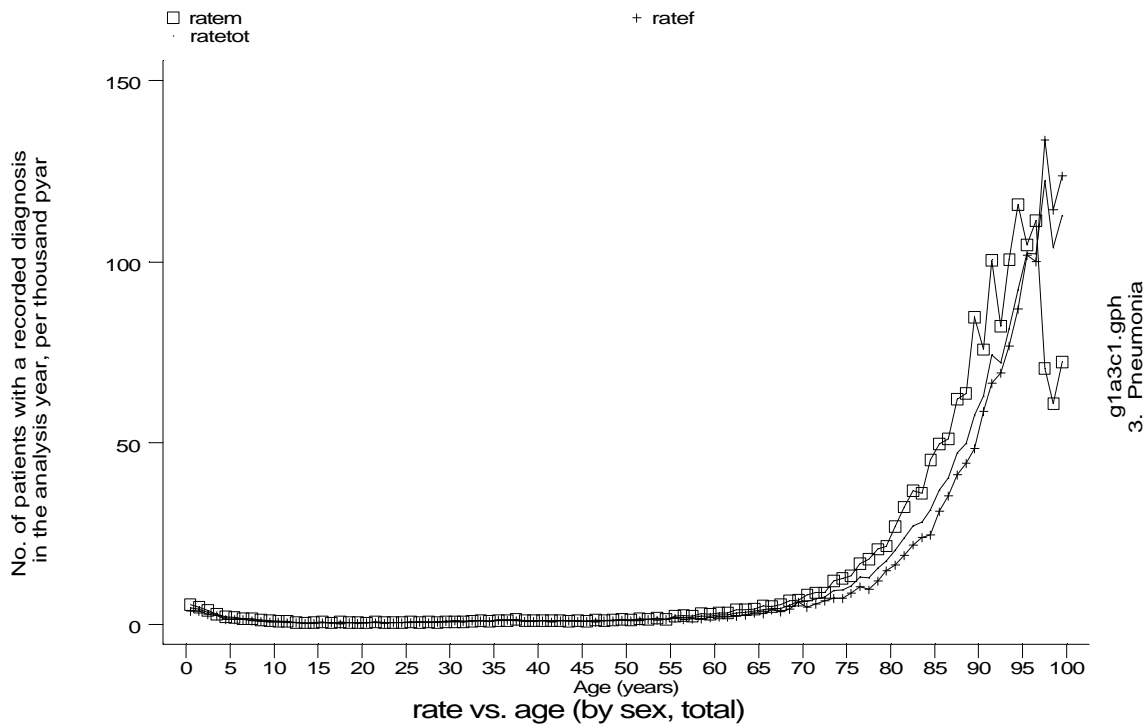
- GPRD Diagnosis, England 1991-95



A9 Pneumonia standard output graphs

Age-sex distributions, yearly trends and cohort analysis (crude rates)

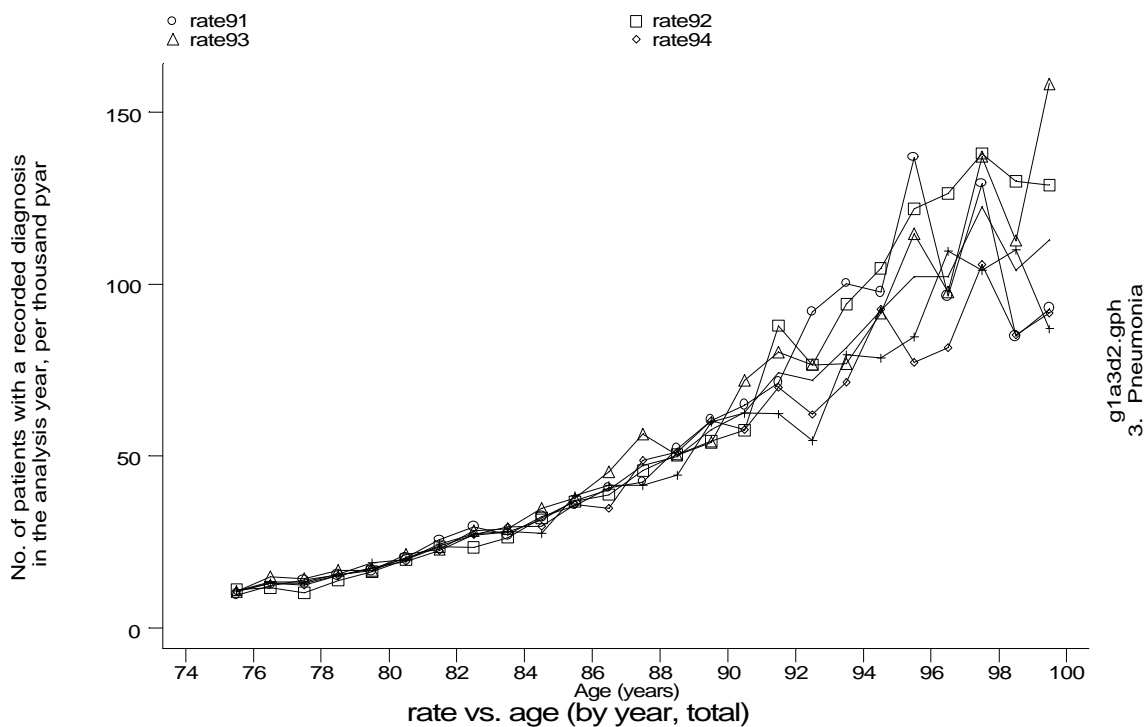
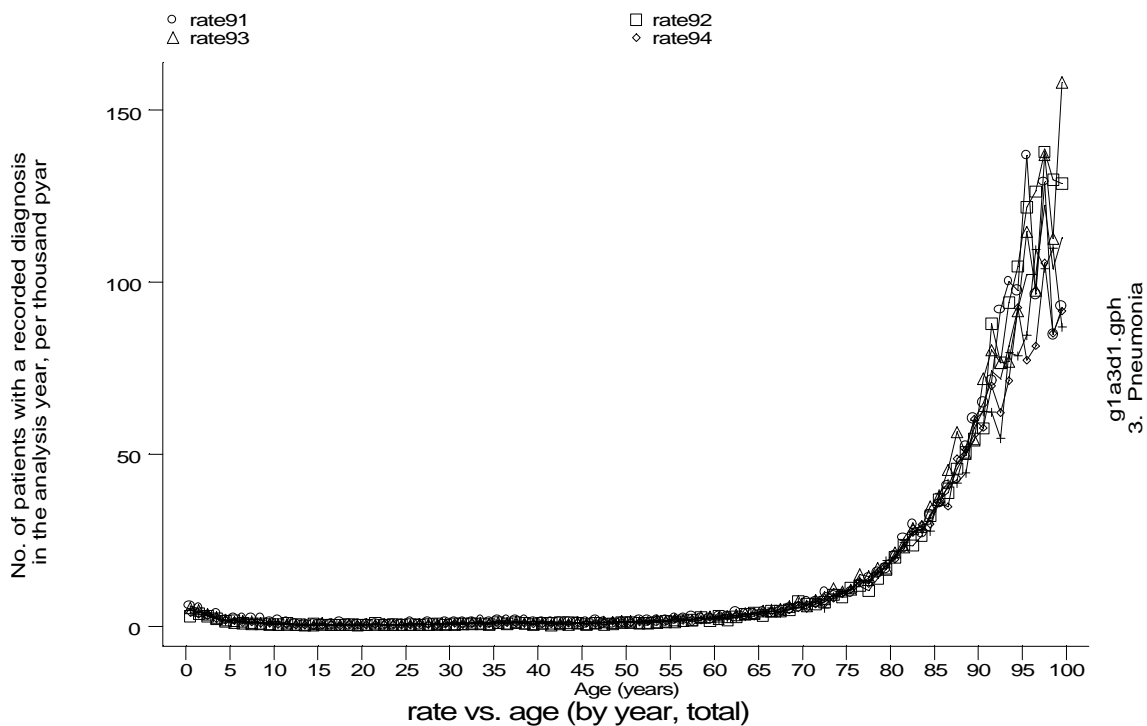
- GPRD Diagnosis, England 1991-95



A9 Pneumonia standard output graphs

Age-sex distributions, yearly trends and cohort analysis (crude rates)

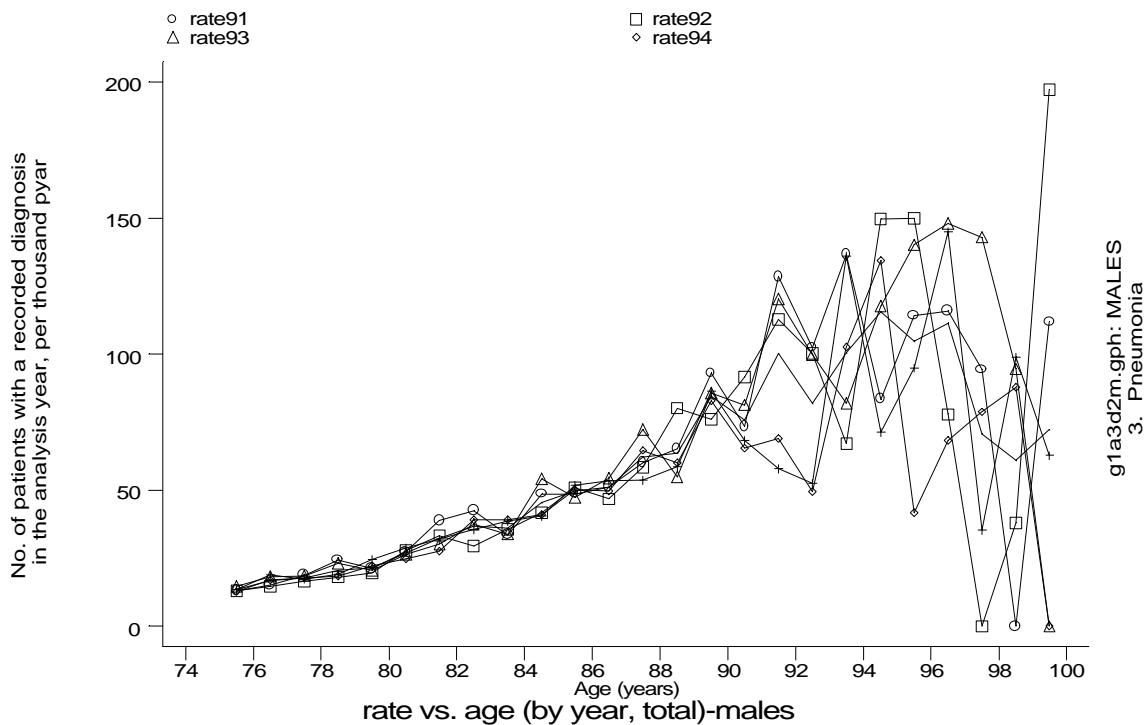
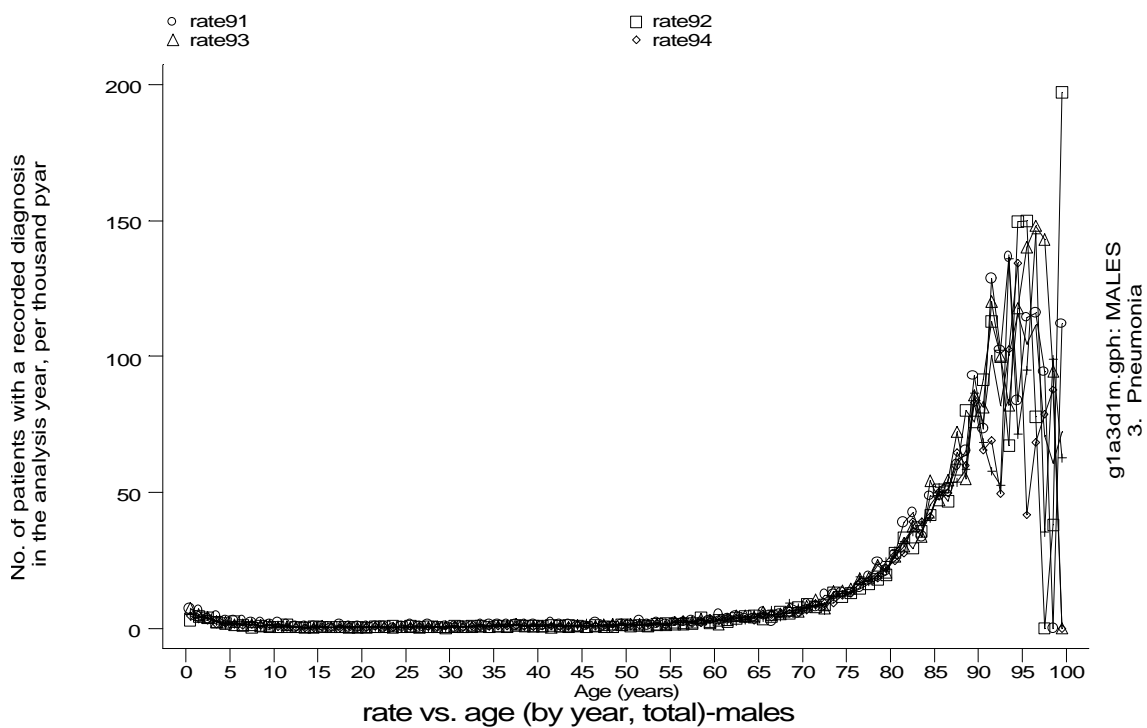
- GPRD Diagnosis, England 1991-95



A9 Pneumonia standard output graphs

Age-sex distributions, yearly trends and cohort analysis (crude rates)

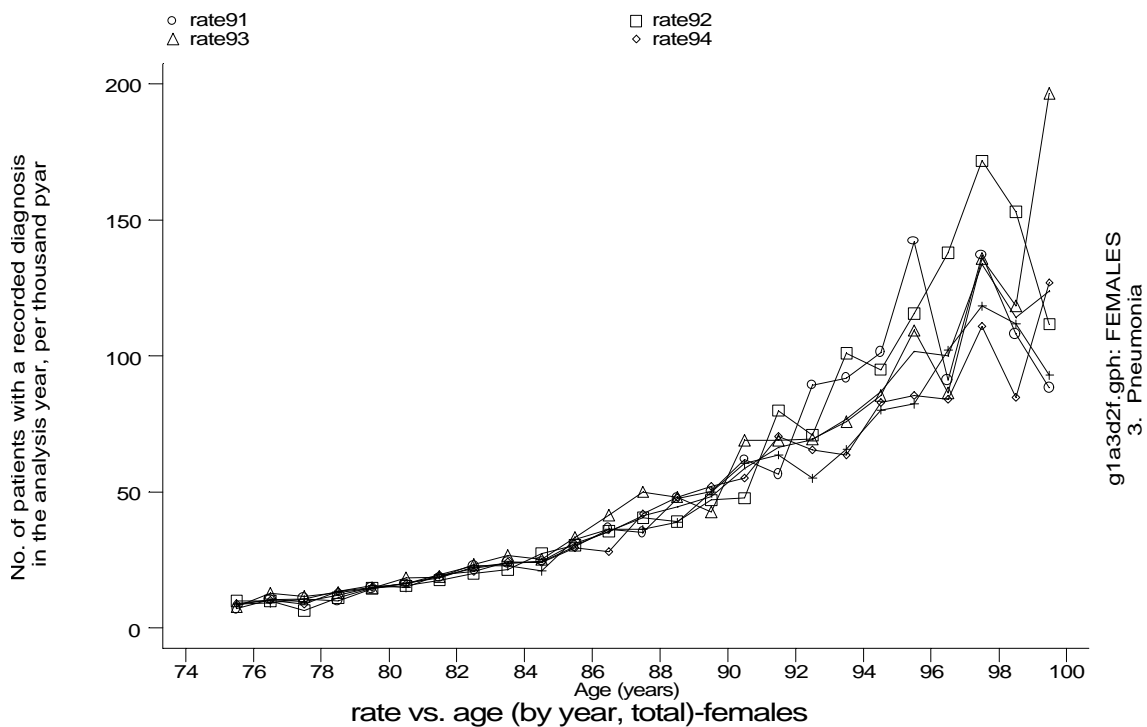
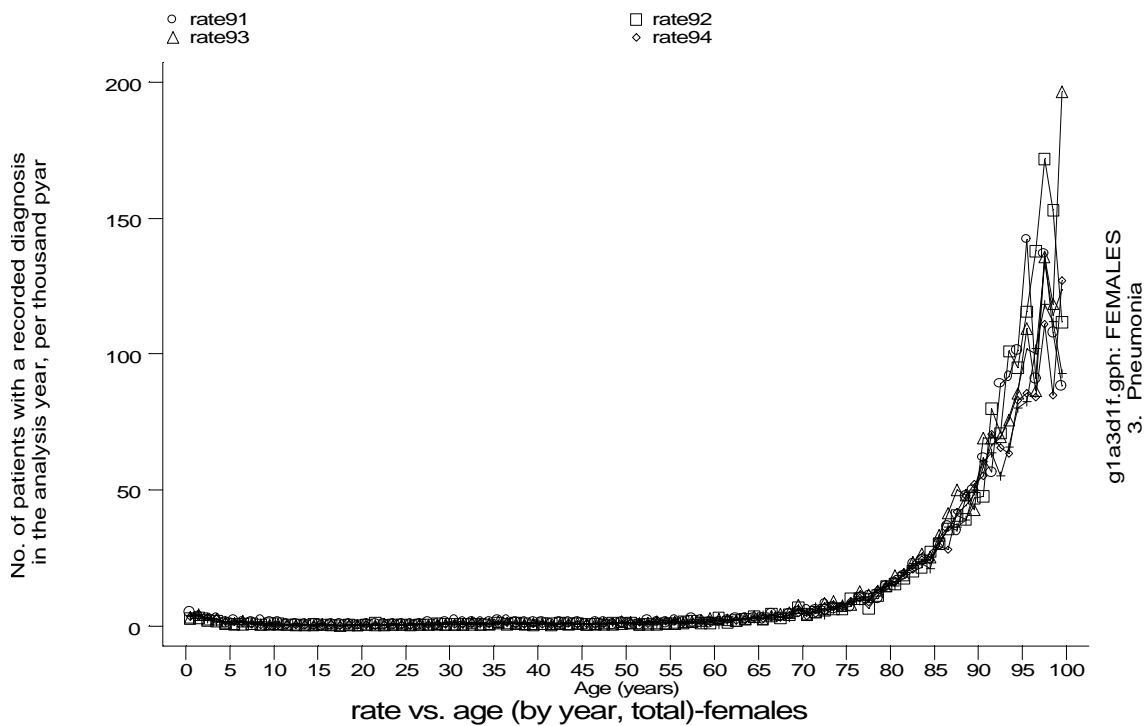
- GPRD Diagnosis, England 1991-95



A9 Pneumonia standard output graphs

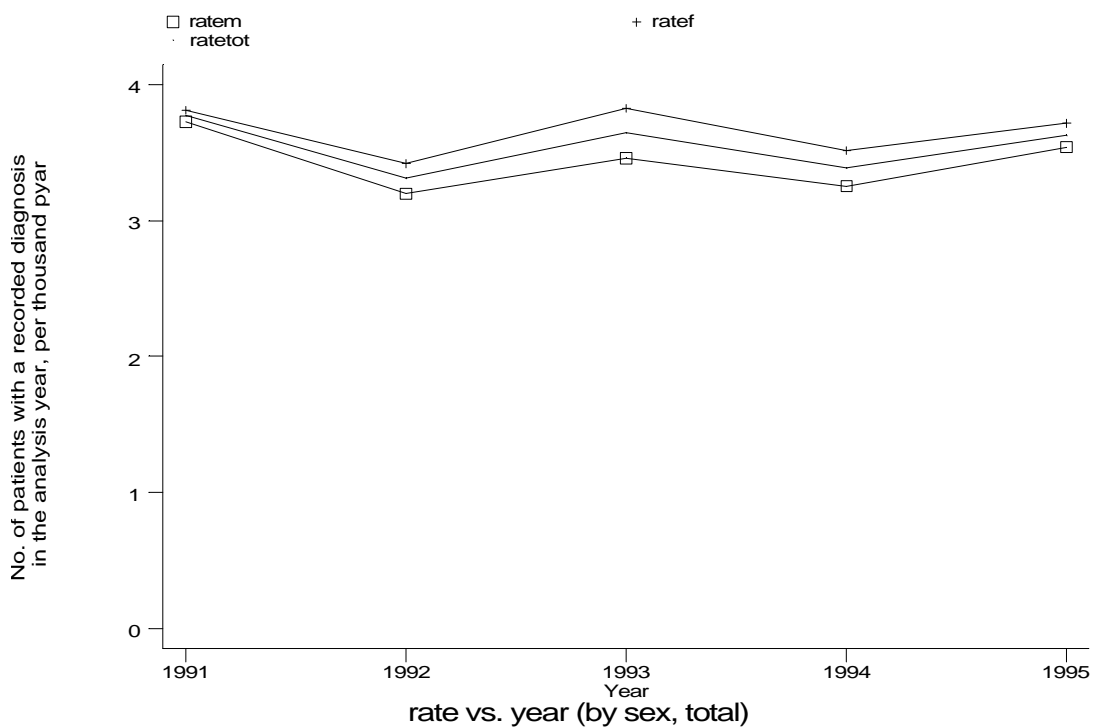
Age-sex distributions, yearly trends and cohort analysis (crude rates)

- GPRD Diagnosis, England 1991-95

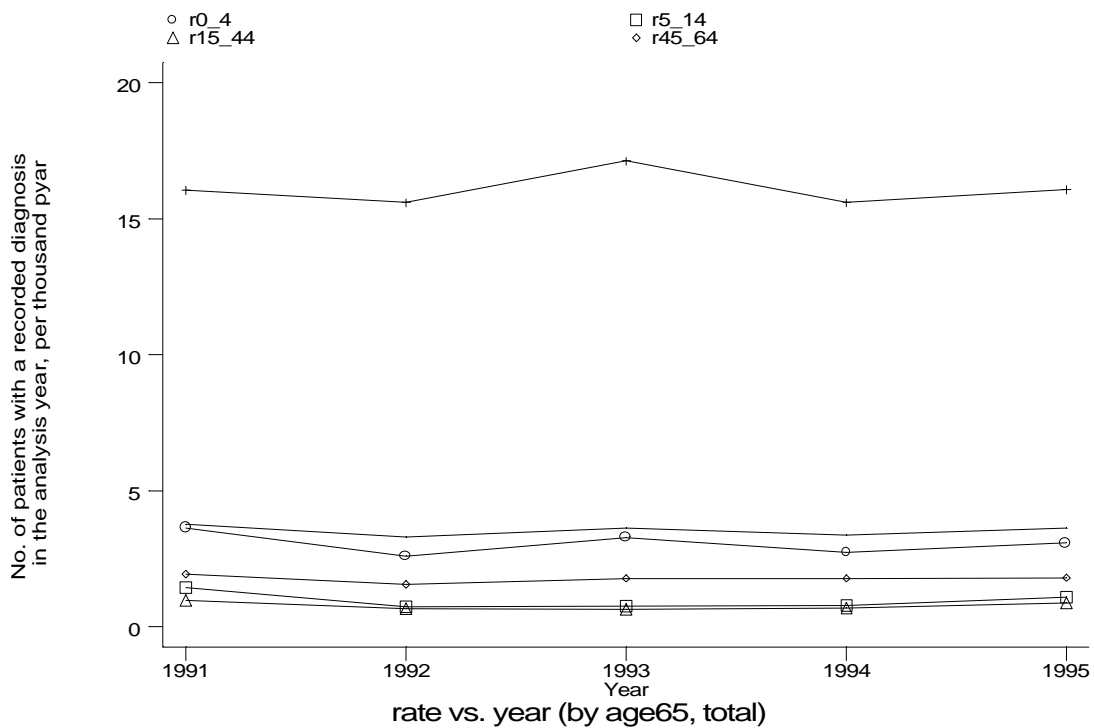


Age-sex distributions, yearly trends and cohort analysis (crude rates)

- GPRD Diagnosis, England 1991-95



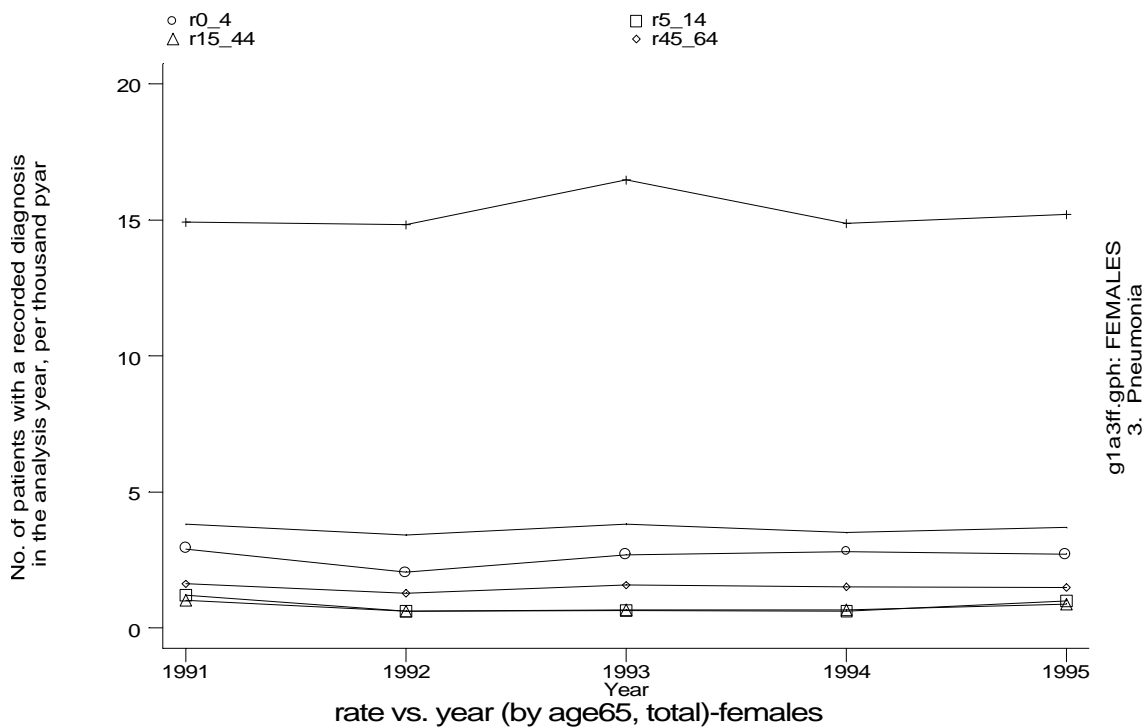
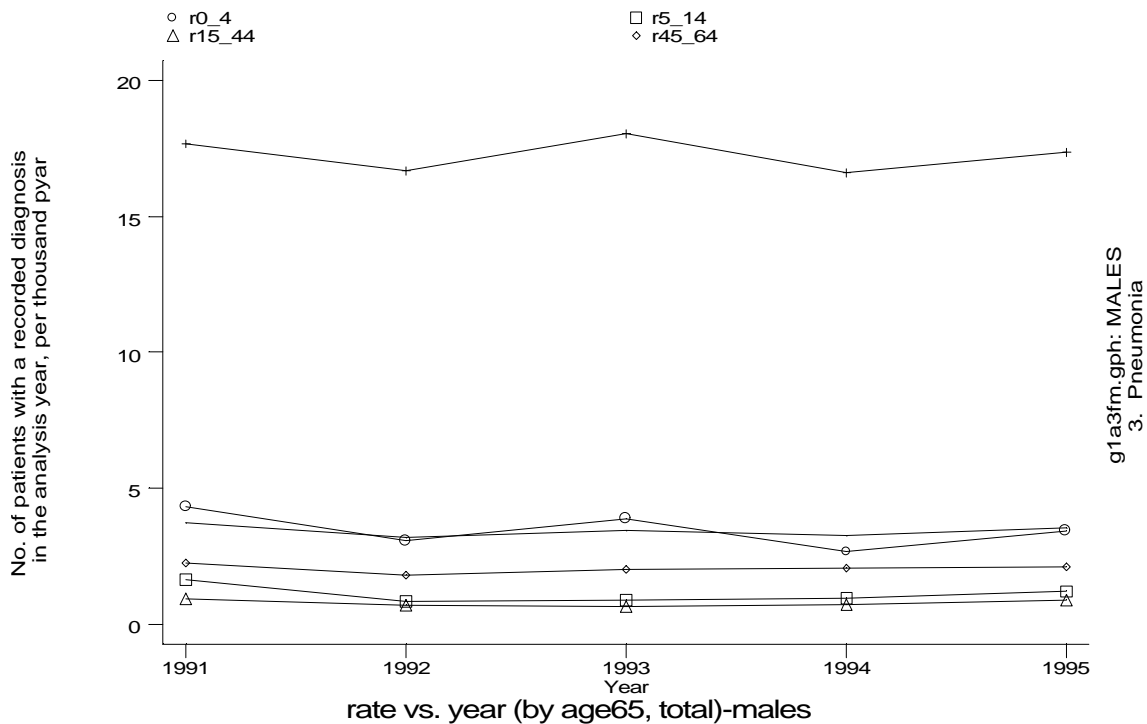
g1a3e.gph
3. Pneumonia



g1a3f.gph
3. Pneumonia

Age-sex distributions, yearly trends and cohort analysis (crude rates)

- GPRD Diagnosis, England 1991-95

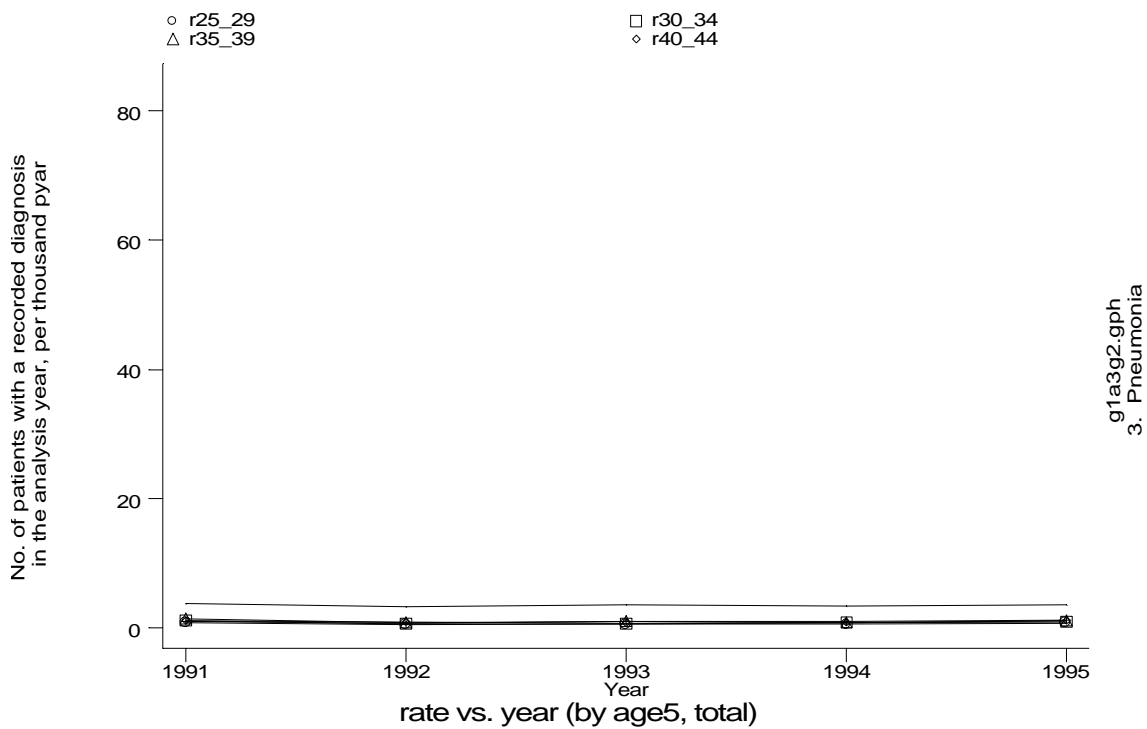
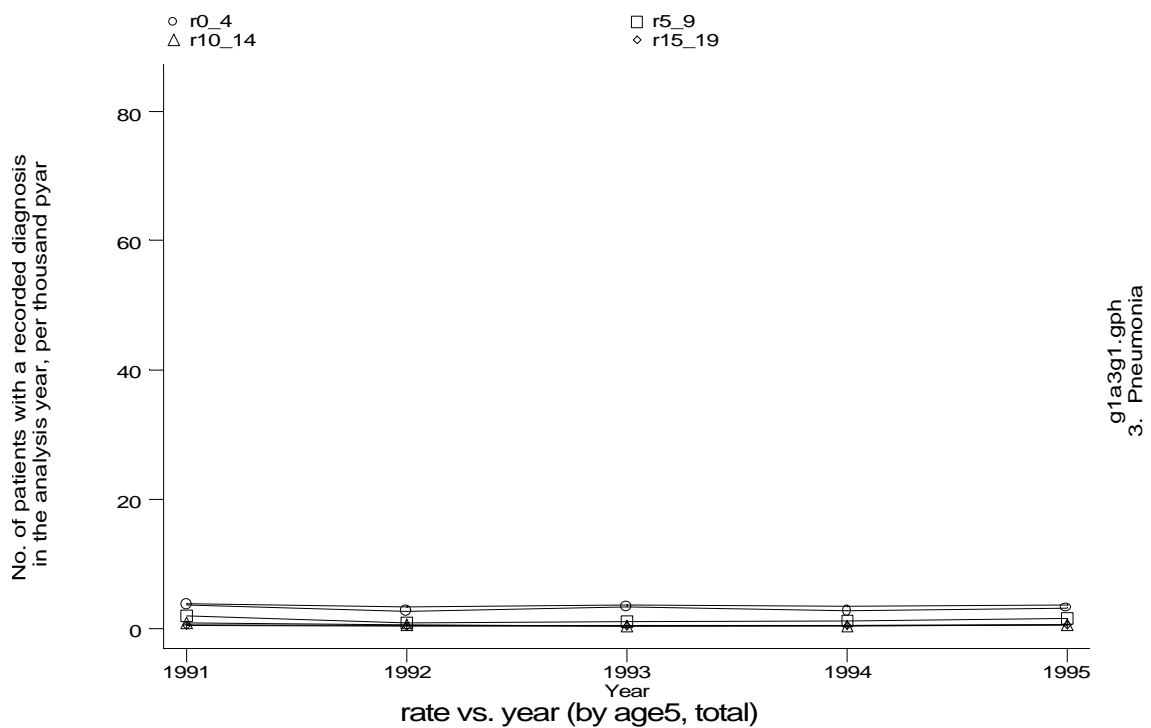


g1a3fm.gph: MALES
3. Pneumonia

g1a3ff.gph: FEMALES
3. Pneumonia

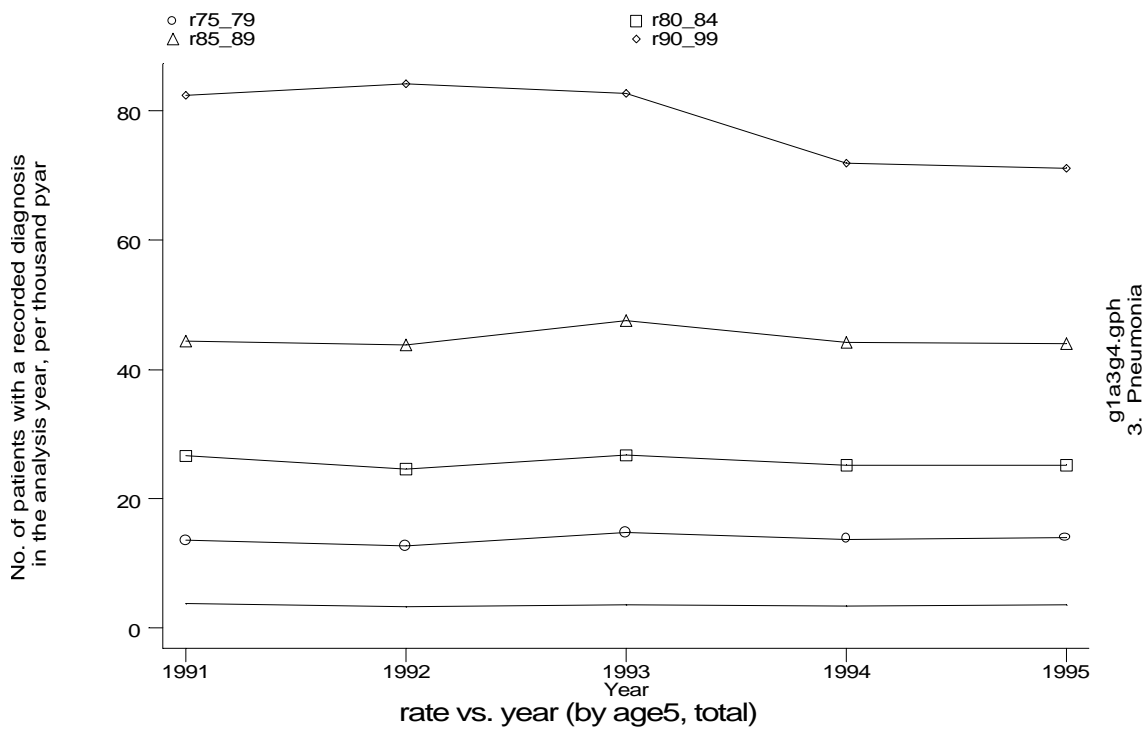
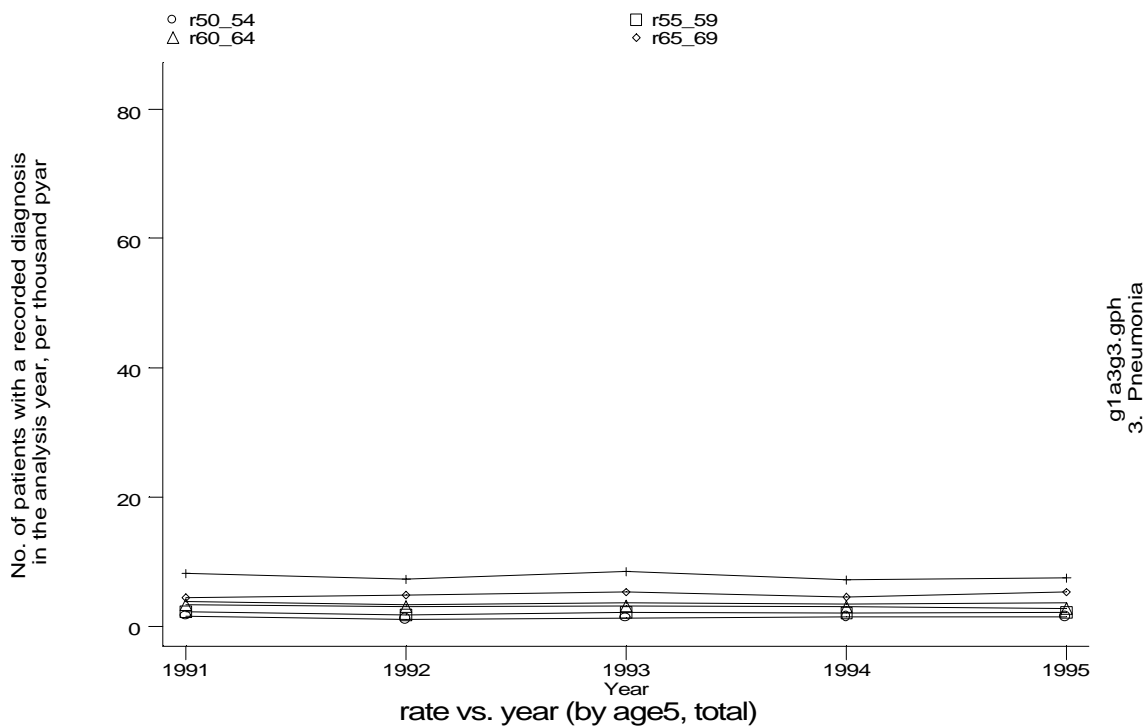
Age-sex distributions, yearly trends and cohort analysis (crude rates)

- GPRD Diagnosis, England 1991-95



Age-sex distributions, yearly trends and cohort analysis (crude rates)

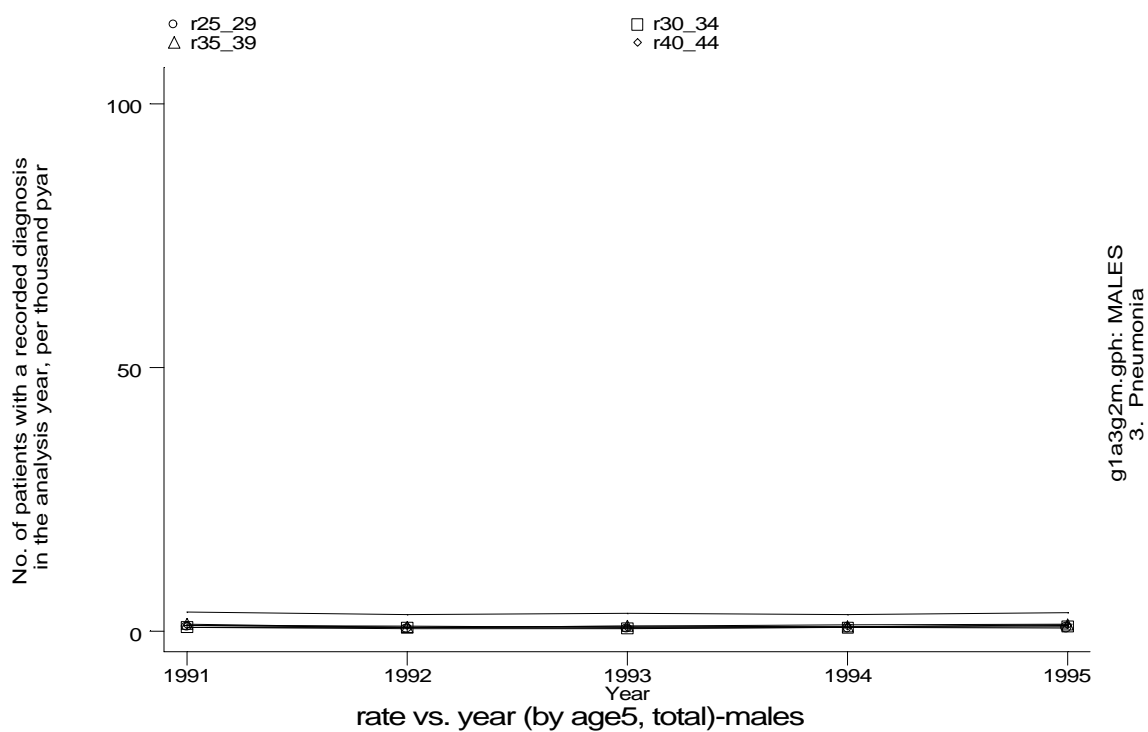
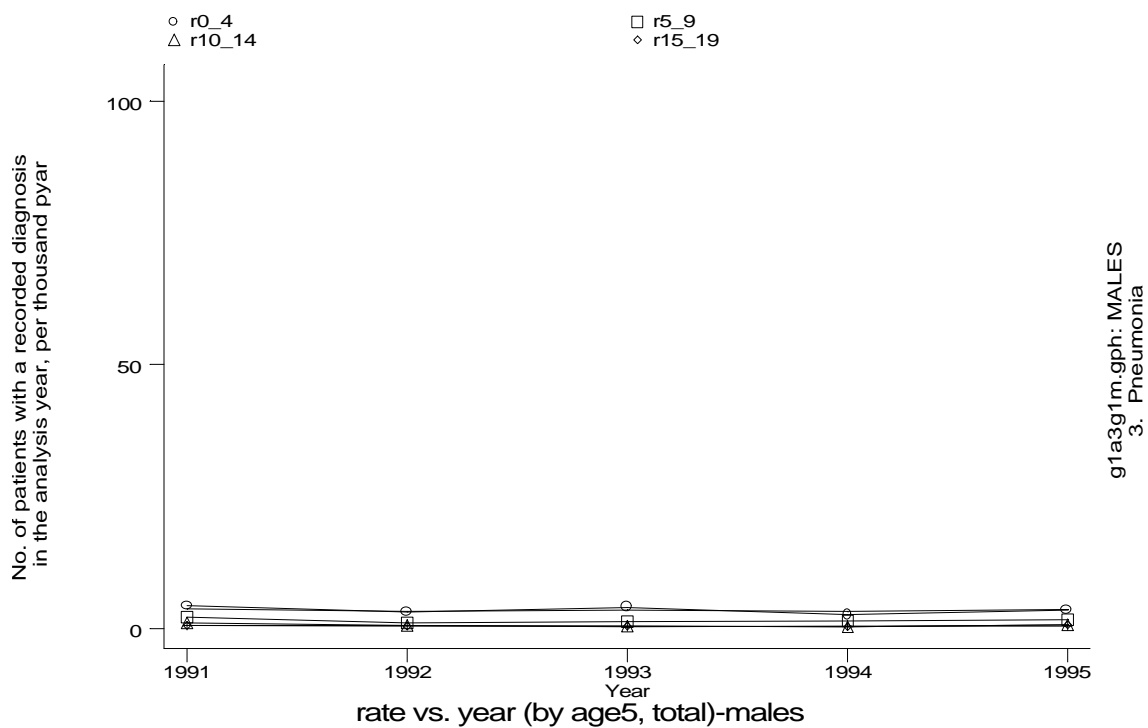
- GPRD Diagnosis, England 1991-95



A9 Pneumonia standard output graphs

Age-sex distributions, yearly trends and cohort analysis (crude rates)

- **GPRD Diagnosis, England 1991-95**

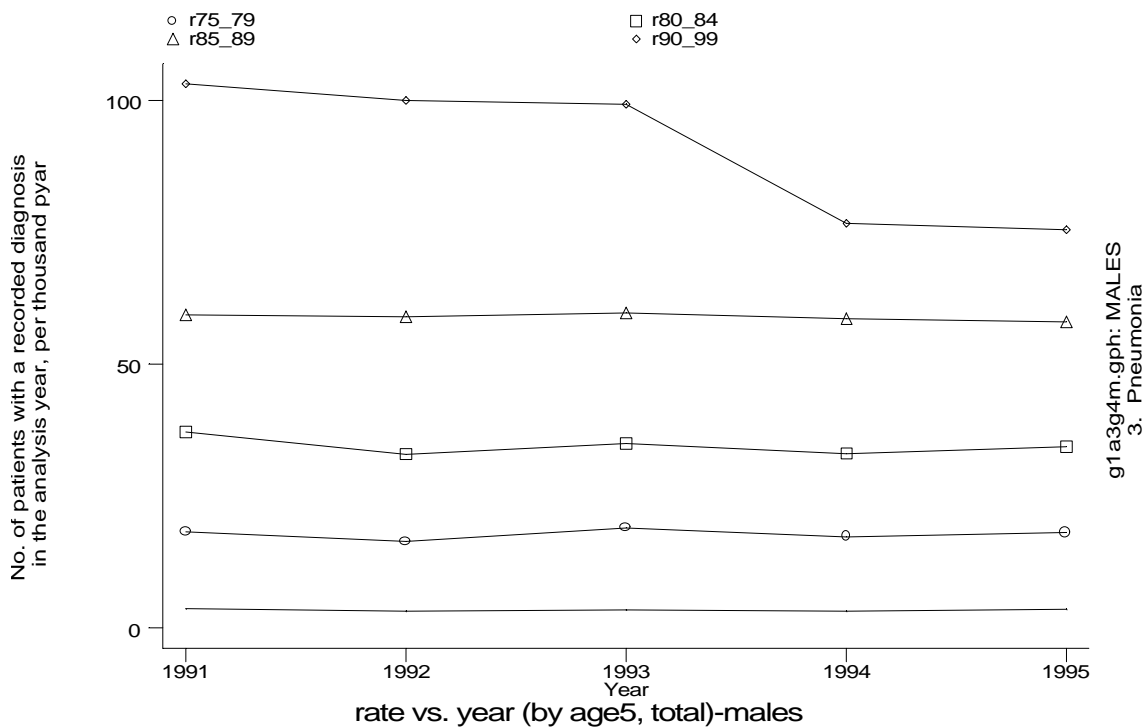
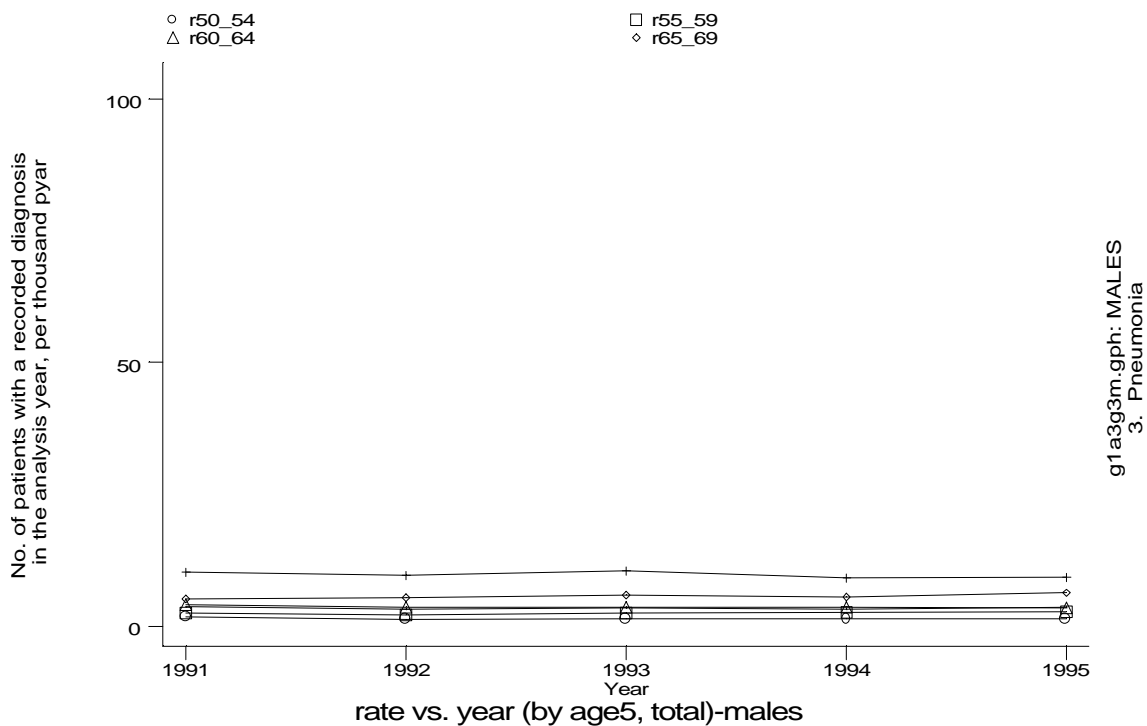


g1a3g1m.gph: MALES
3. Pneumonia

g1a3g2m.gph: MALES
3. Pneumonia

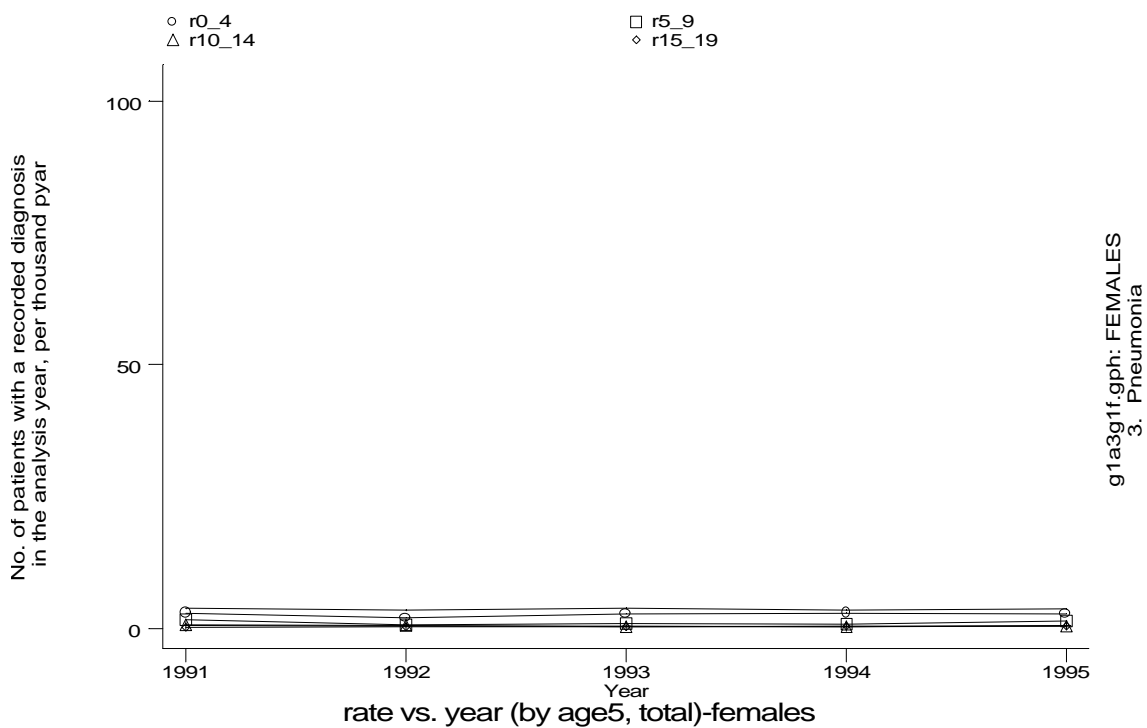
Age-sex distributions, yearly trends and cohort analysis (crude rates)

- GPRD Diagnosis, England 1991-95

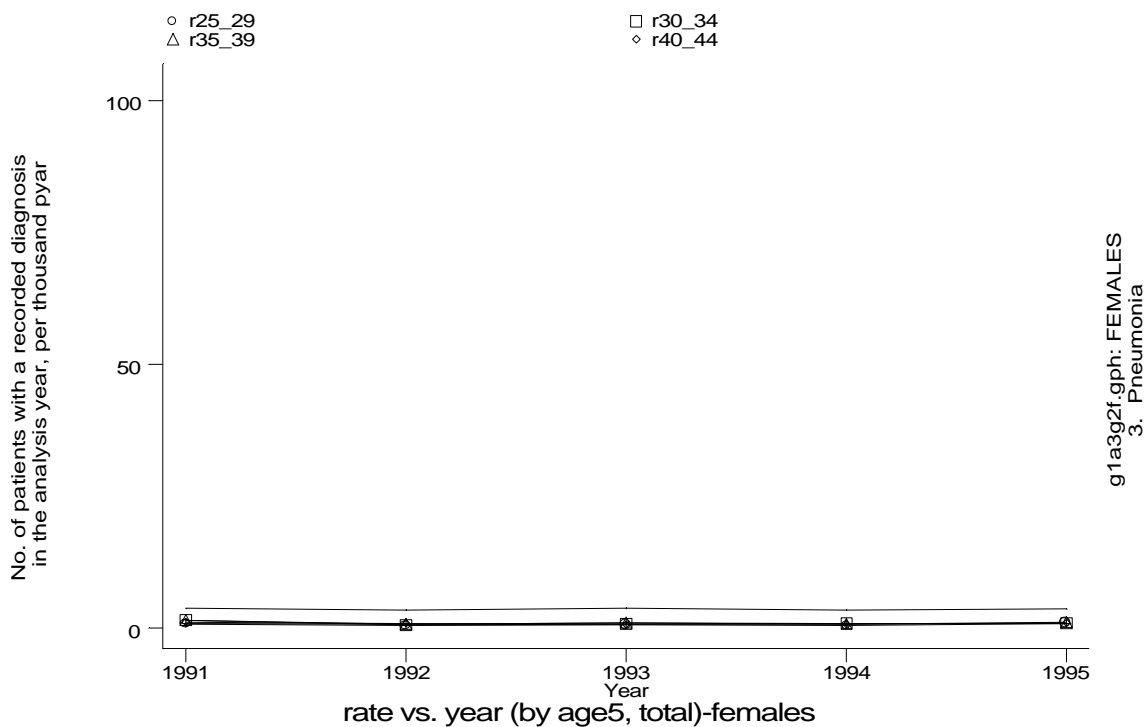


Age-sex distributions, yearly trends and cohort analysis (crude rates)

- GPRD Diagnosis, England 1991-95



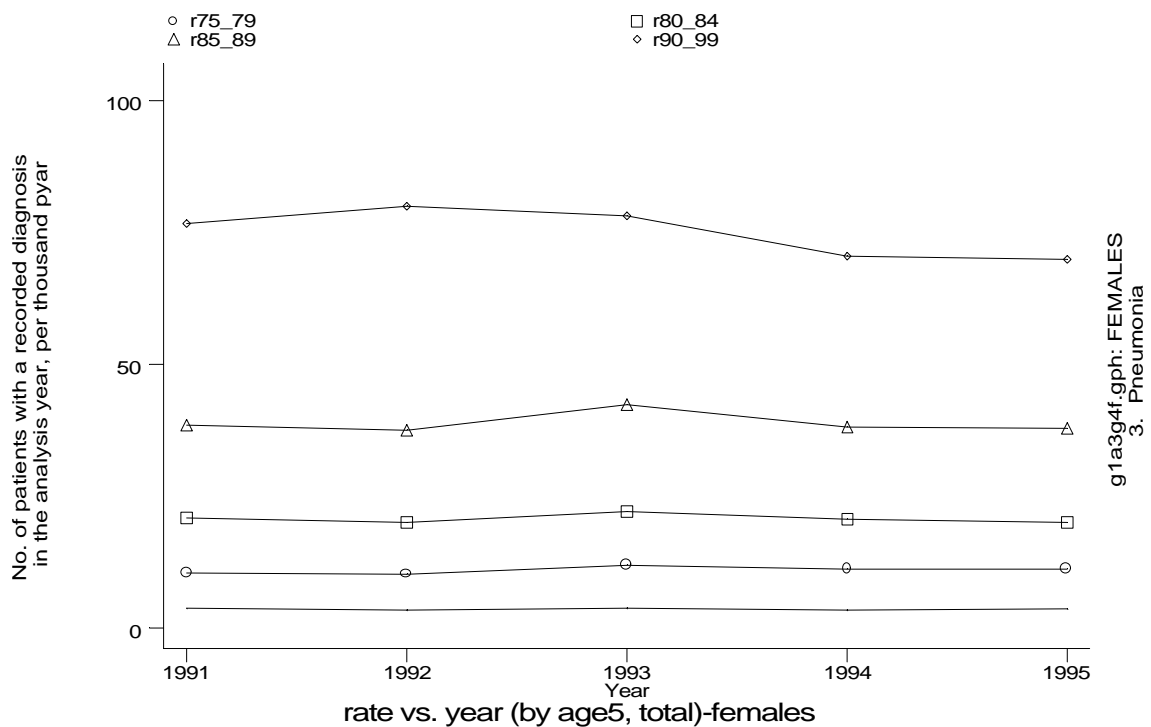
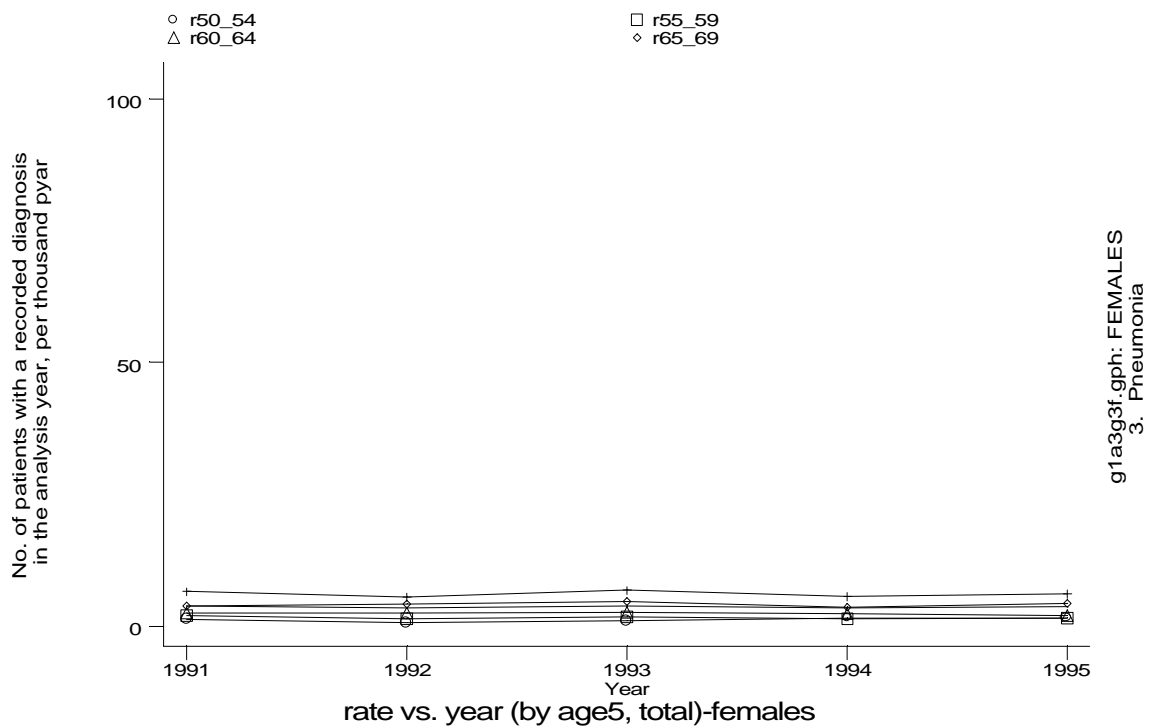
g1a3g1f.gph: FEMALES
3. Pneumonia



g1a3g2f.gph: FEMALES
3. Pneumonia

Age-sex distributions, yearly trends and cohort analysis (crude rates)

- GPRD Diagnosis, England 1991-95

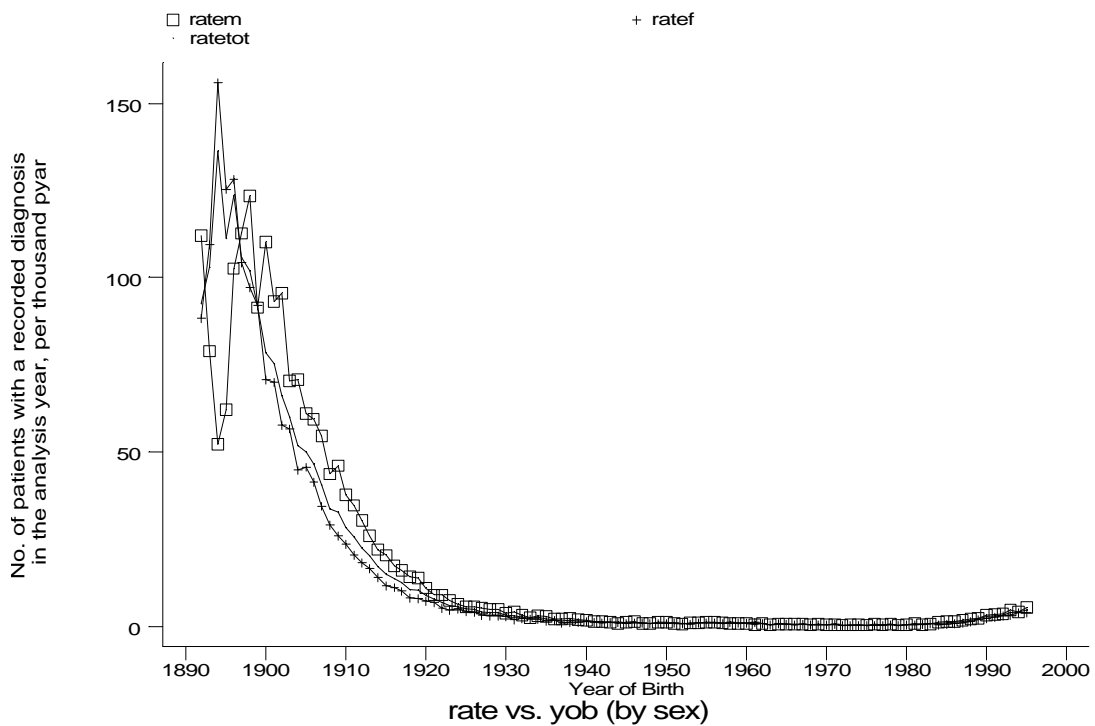


g1a3g3f.gph: FEMALES
3. Pneumonia

g1a3g4f.gph: FEMALES
3. Pneumonia

Age-sex distributions, yearly trends and cohort analysis (crude rates)

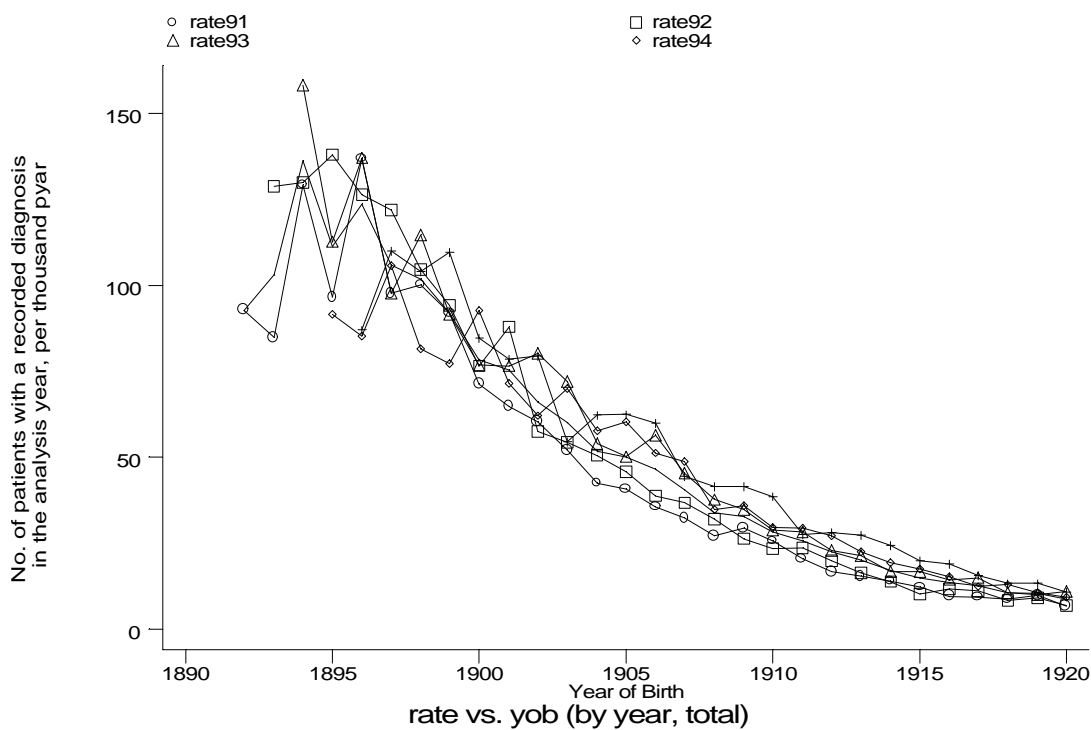
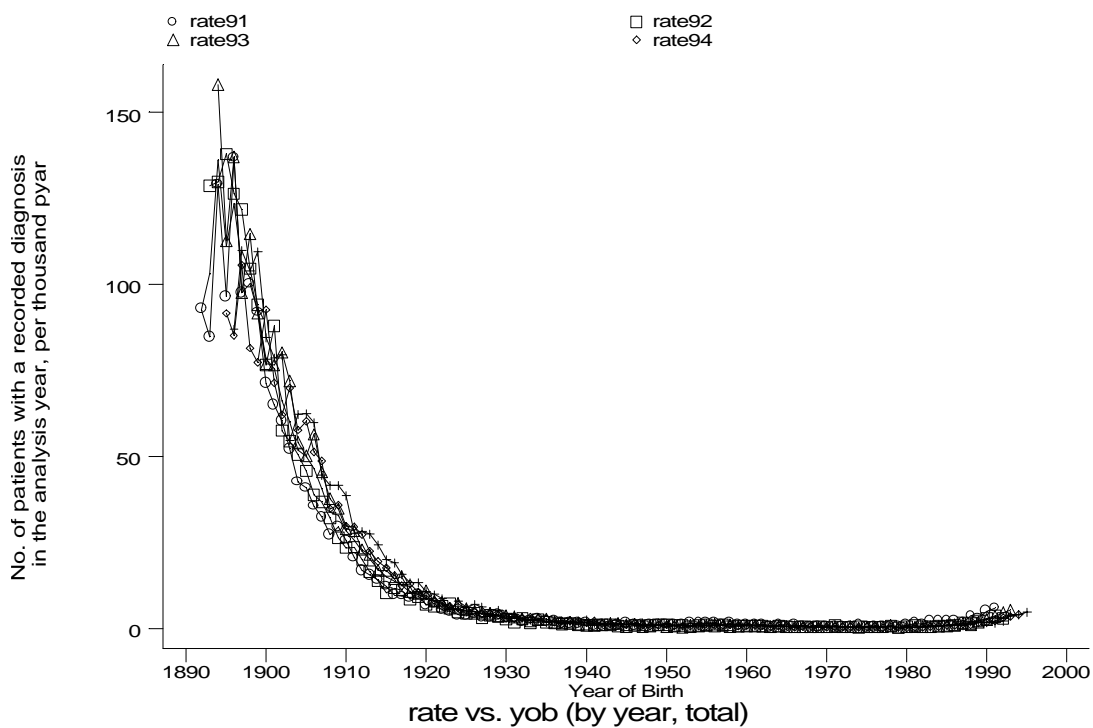
- GPRD Diagnosis, England 1991-95



g1a3h.gph
3. Pneumonia

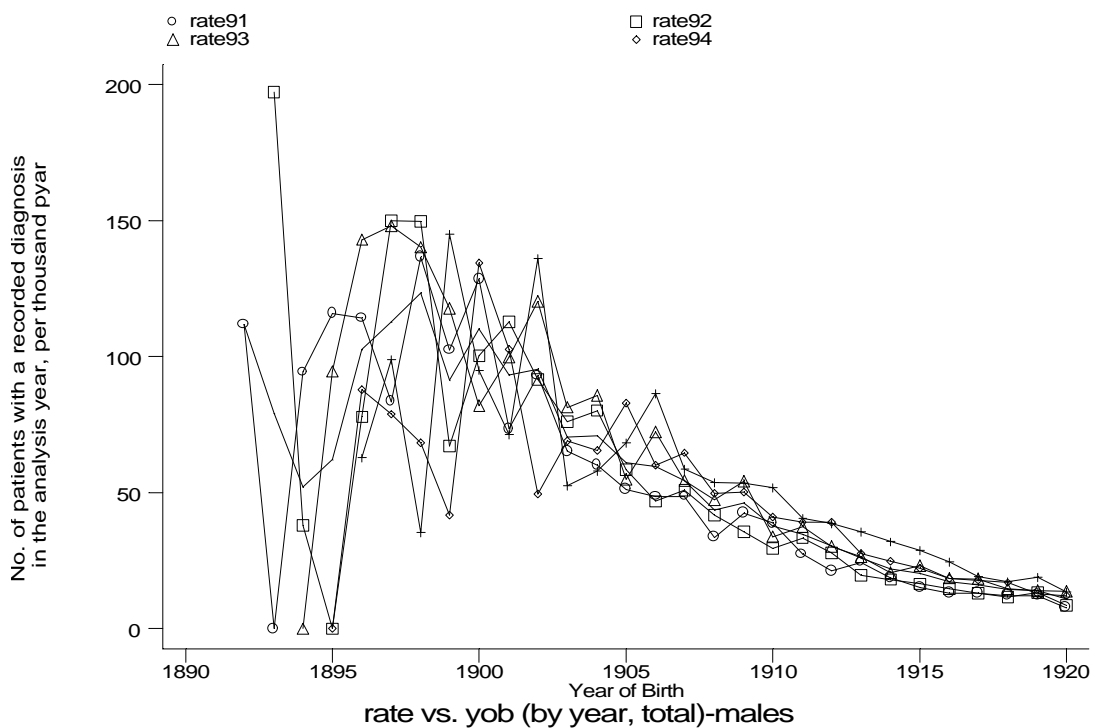
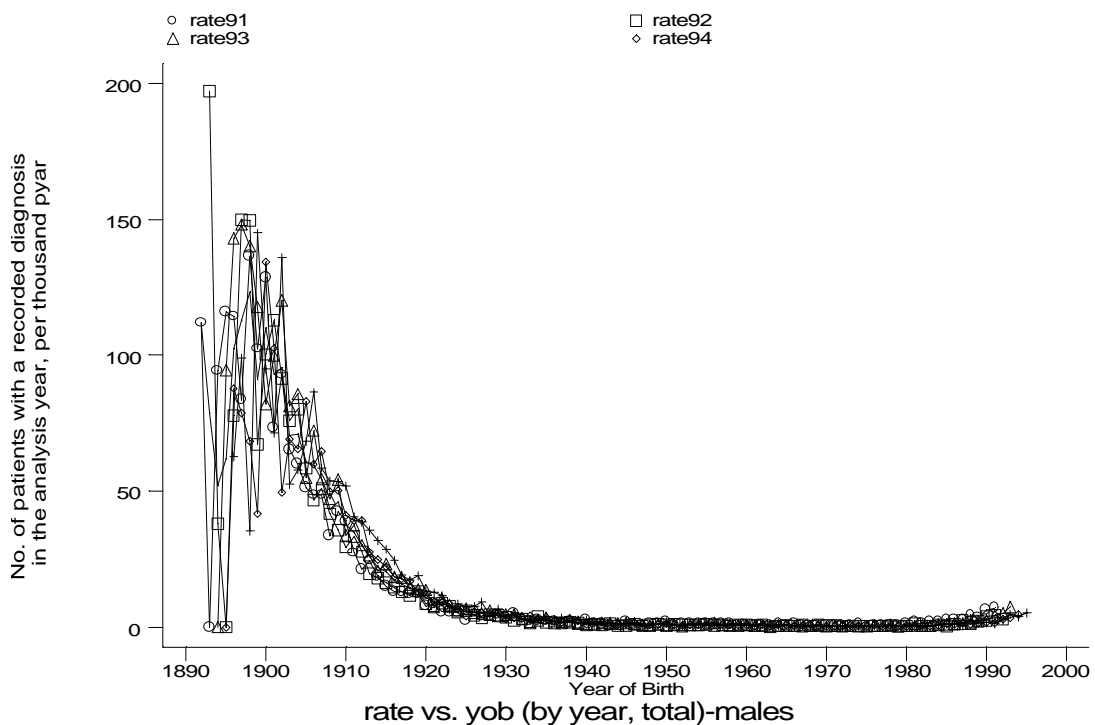
Age-sex distributions, yearly trends and cohort analysis (crude rates)

- GPRD Diagnosis, England 1991-95



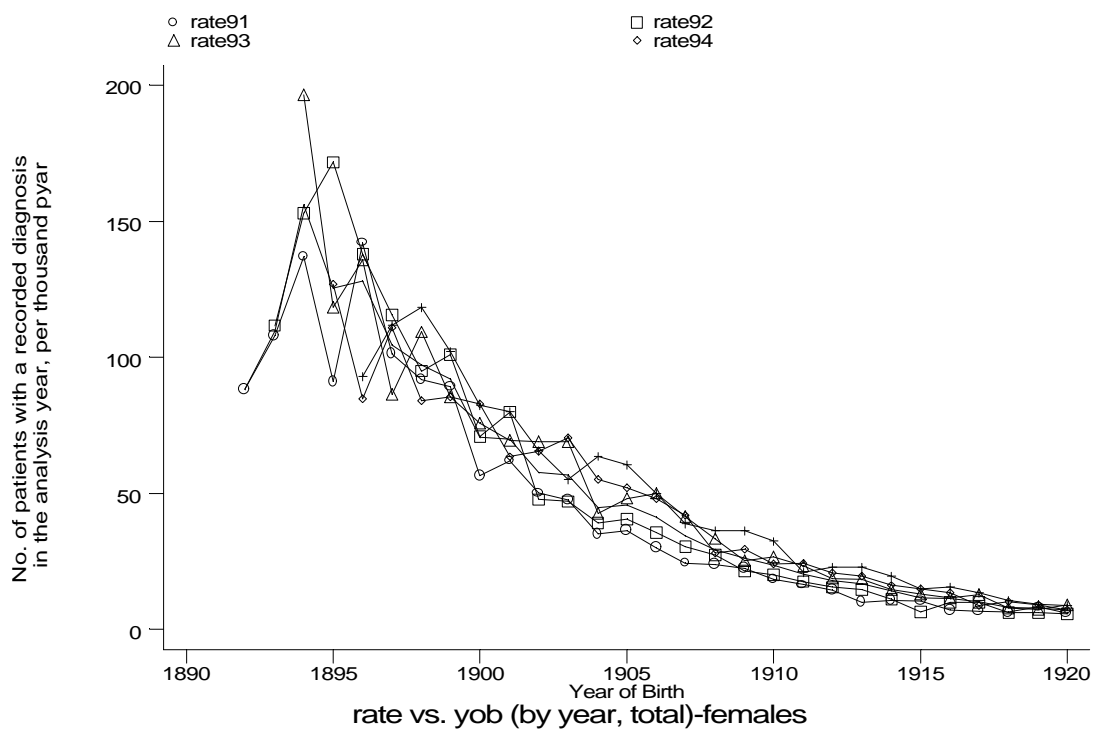
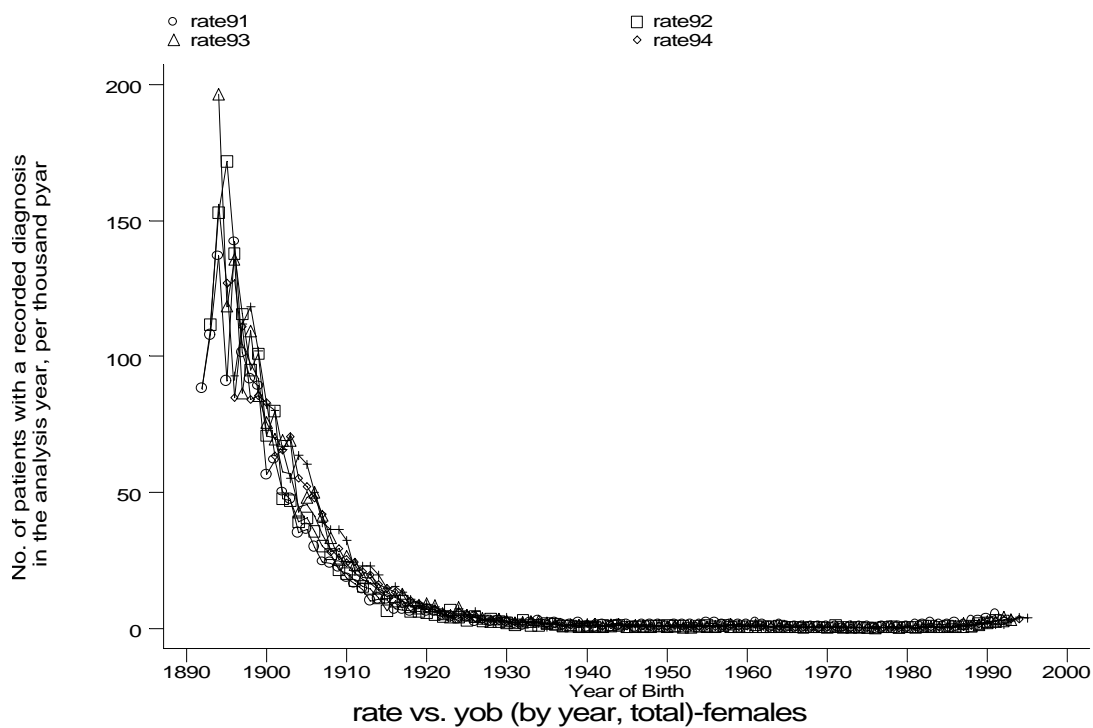
Age-sex distributions, yearly trends and cohort analysis (crude rates)

- GPRD Diagnosis, England 1991-95



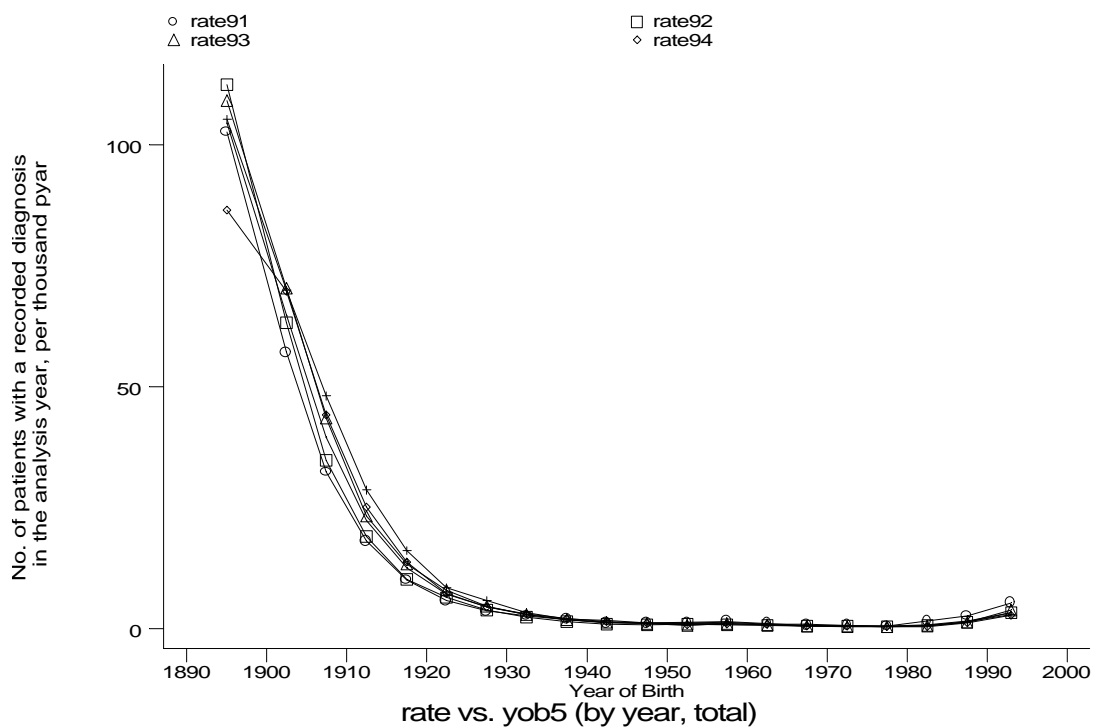
Age-sex distributions, yearly trends and cohort analysis (crude rates)

- GPRD Diagnosis, England 1991-95

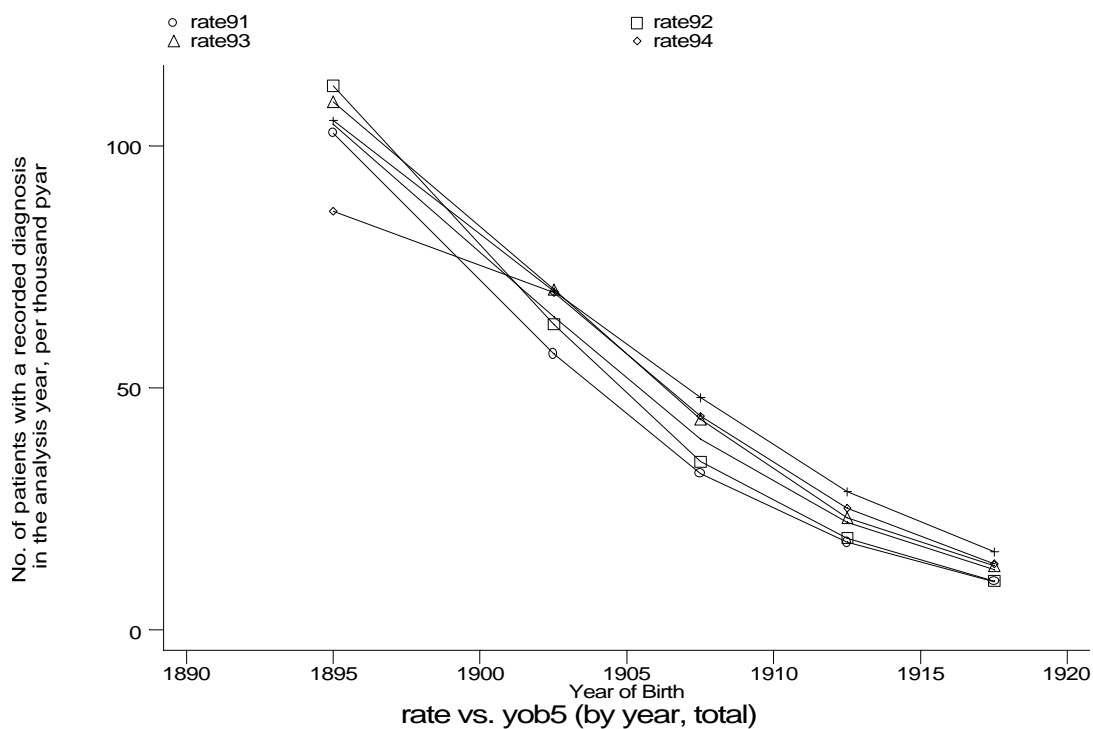


Age-sex distributions, yearly trends and cohort analysis (crude rates)

- GPRD Diagnosis, England 1991-95



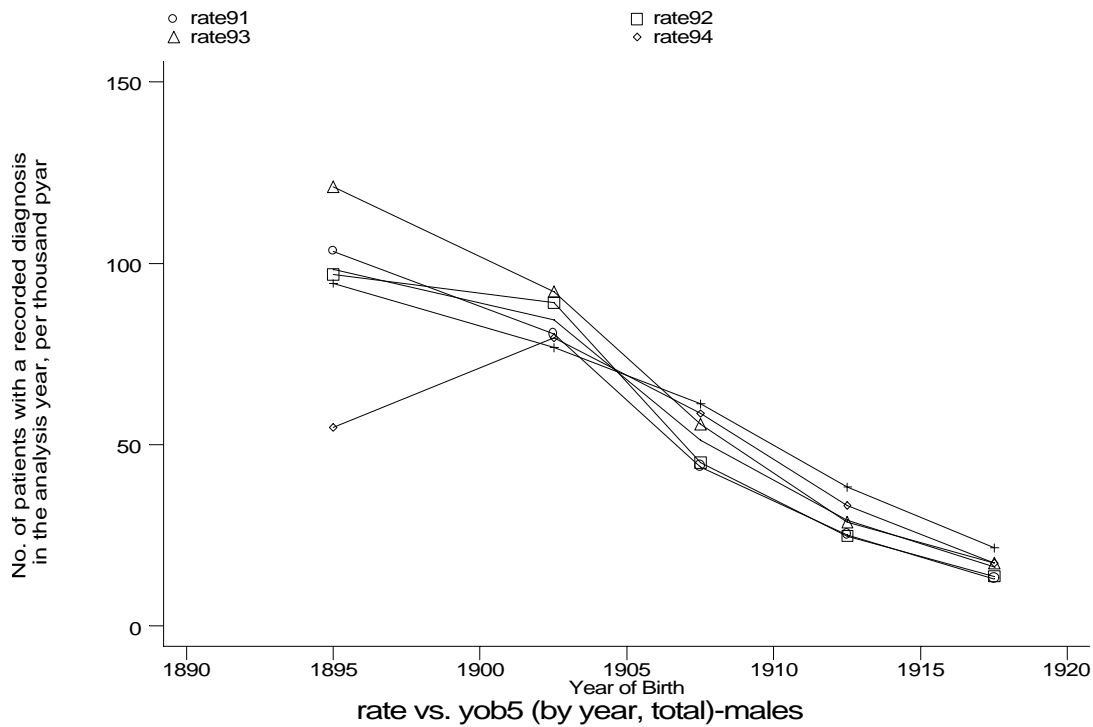
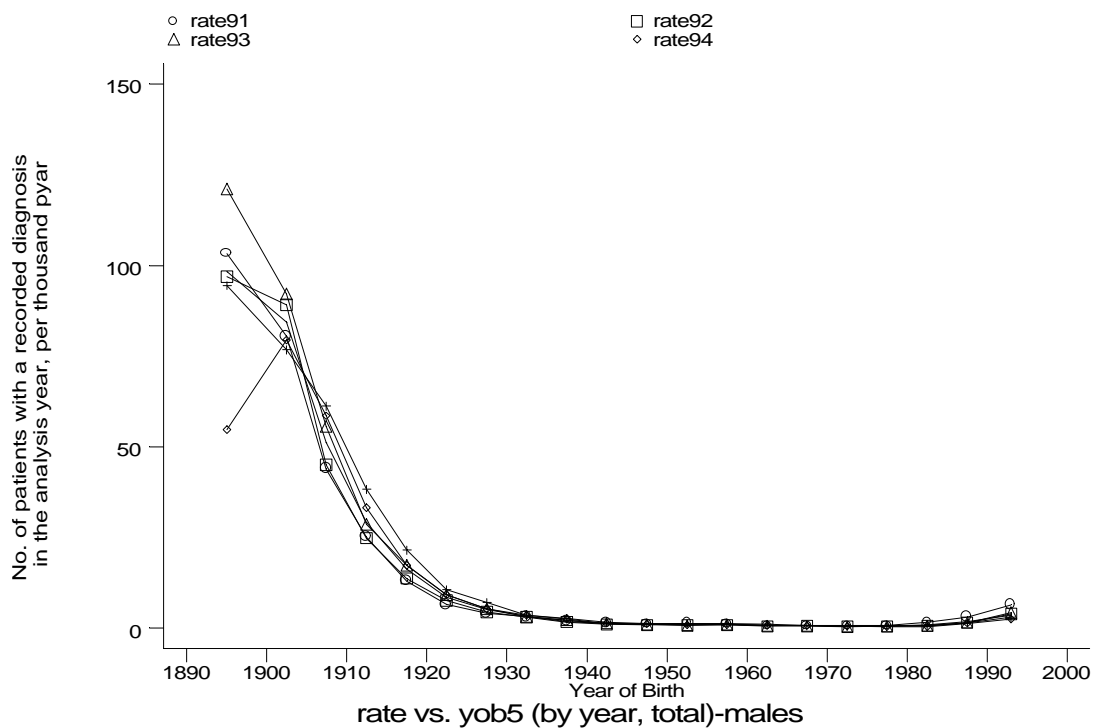
g1a3j1.gph
3. Pneumonia



g1a3j2.gph
3. Pneumonia

Age-sex distributions, yearly trends and cohort analysis (crude rates)

- GPRD Diagnosis, England 1991-95



Age-sex distributions, yearly trends and cohort analysis (crude rates)

- GPRD Diagnosis, England 1991-95

