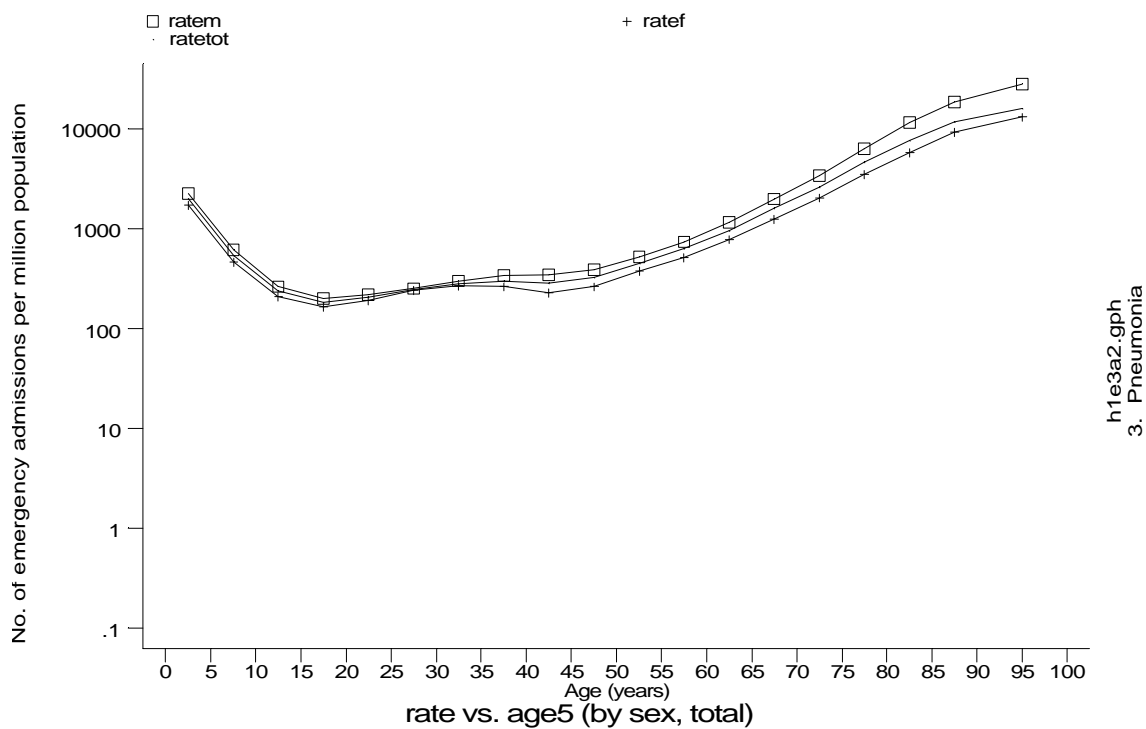
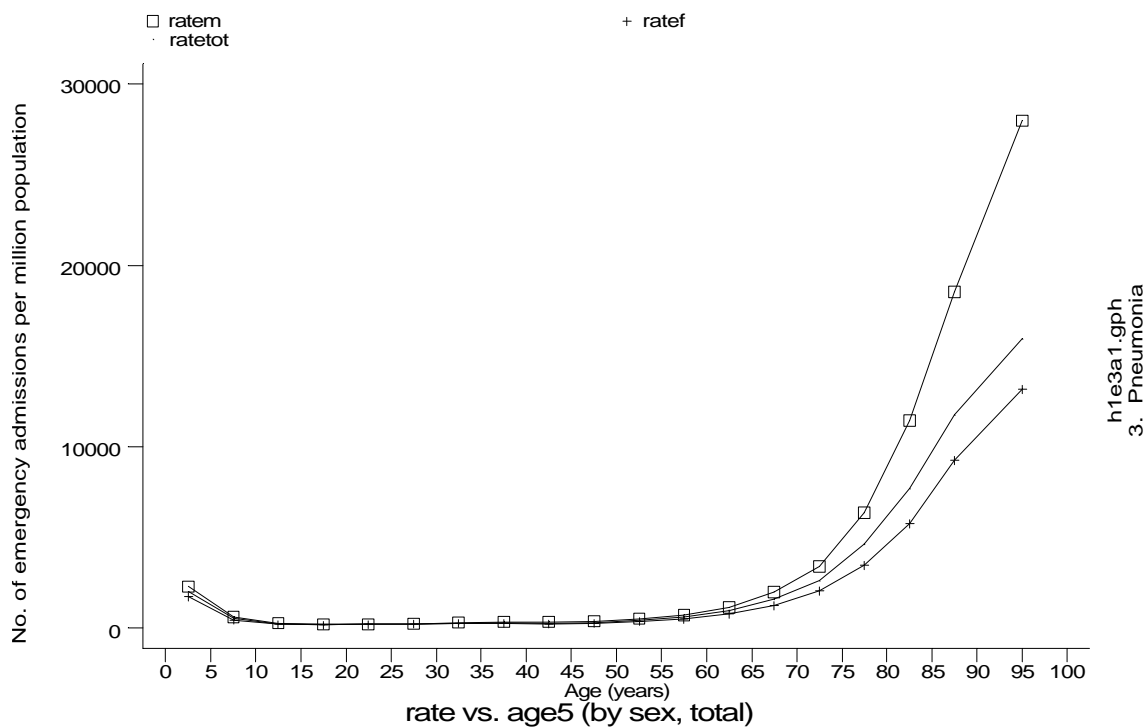


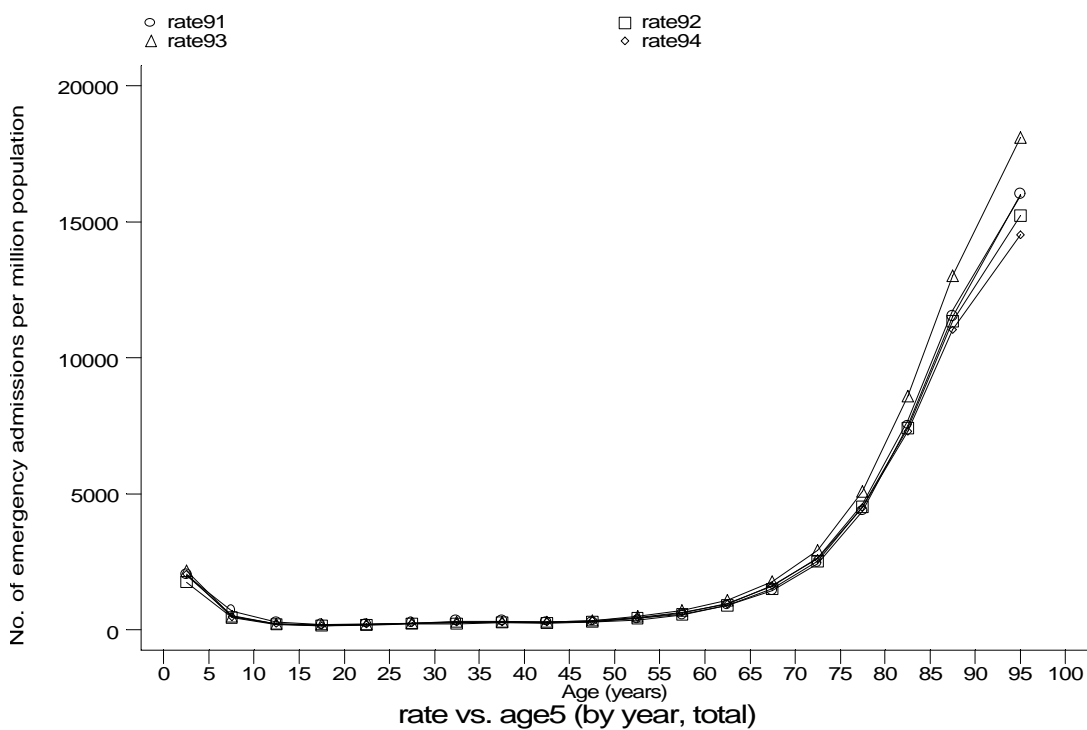
Age-sex distributions, yearly trends and cohort analysis (crude rates)

- HES Emergency admissions, England 1991-94

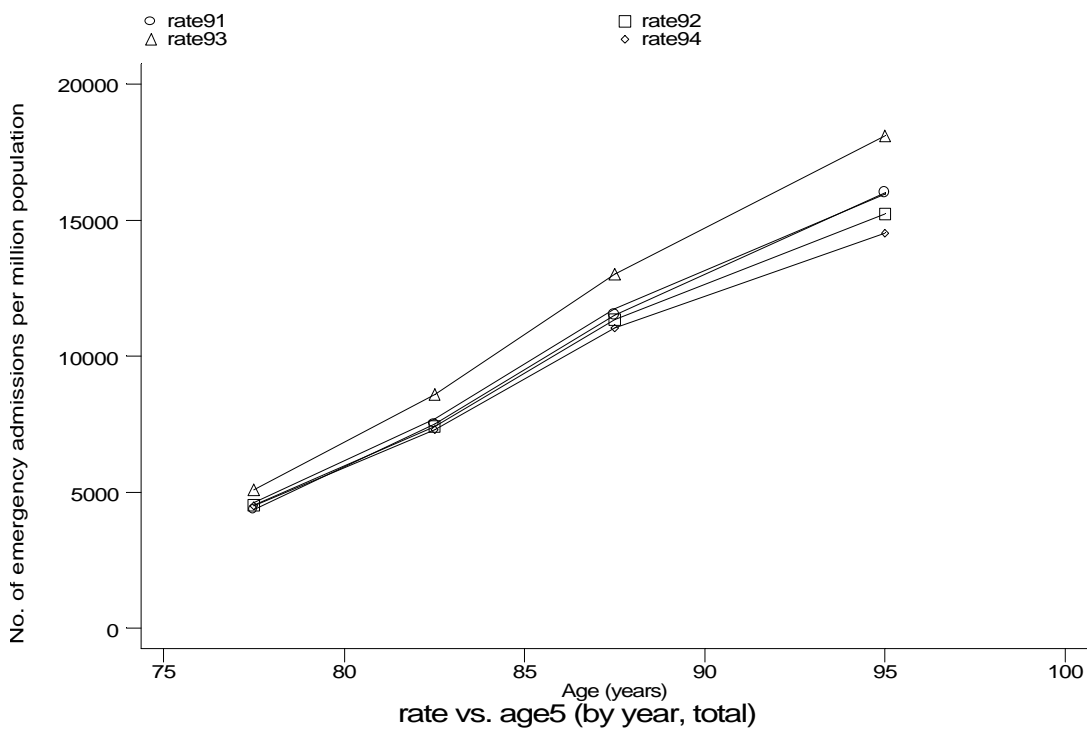


Age-sex distributions, yearly trends and cohort analysis (crude rates)

- HES Emergency admissions, England 1991-94



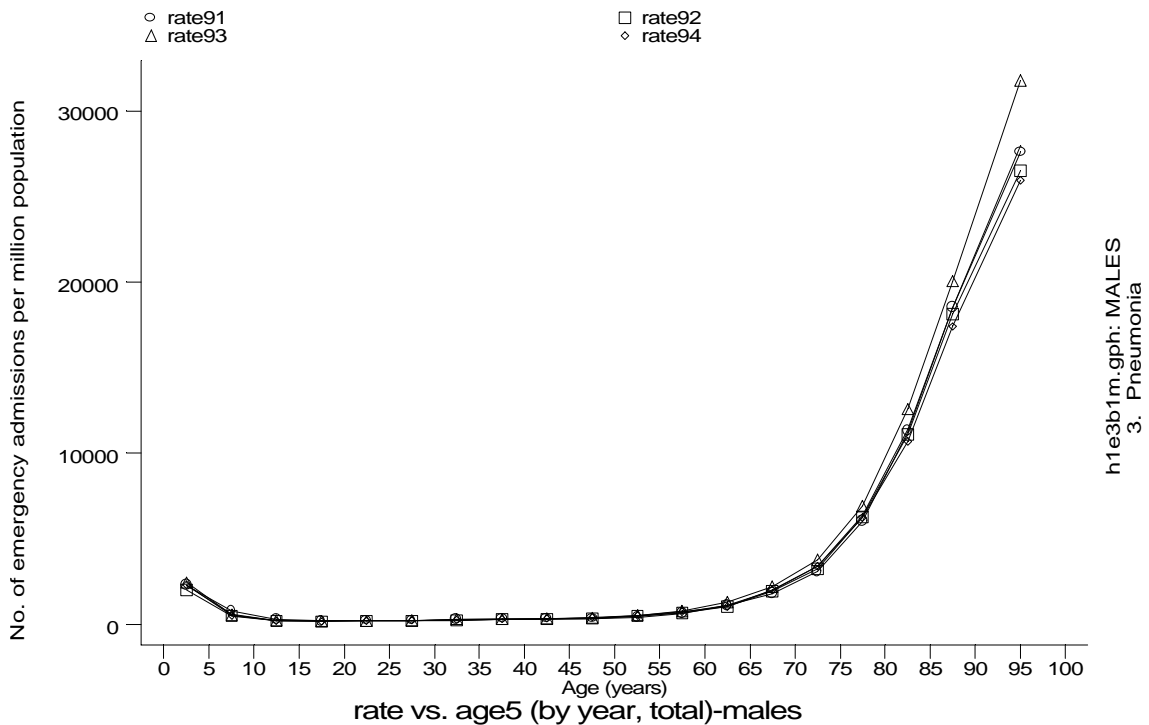
h1e3b1.gph
3. Pneumonia



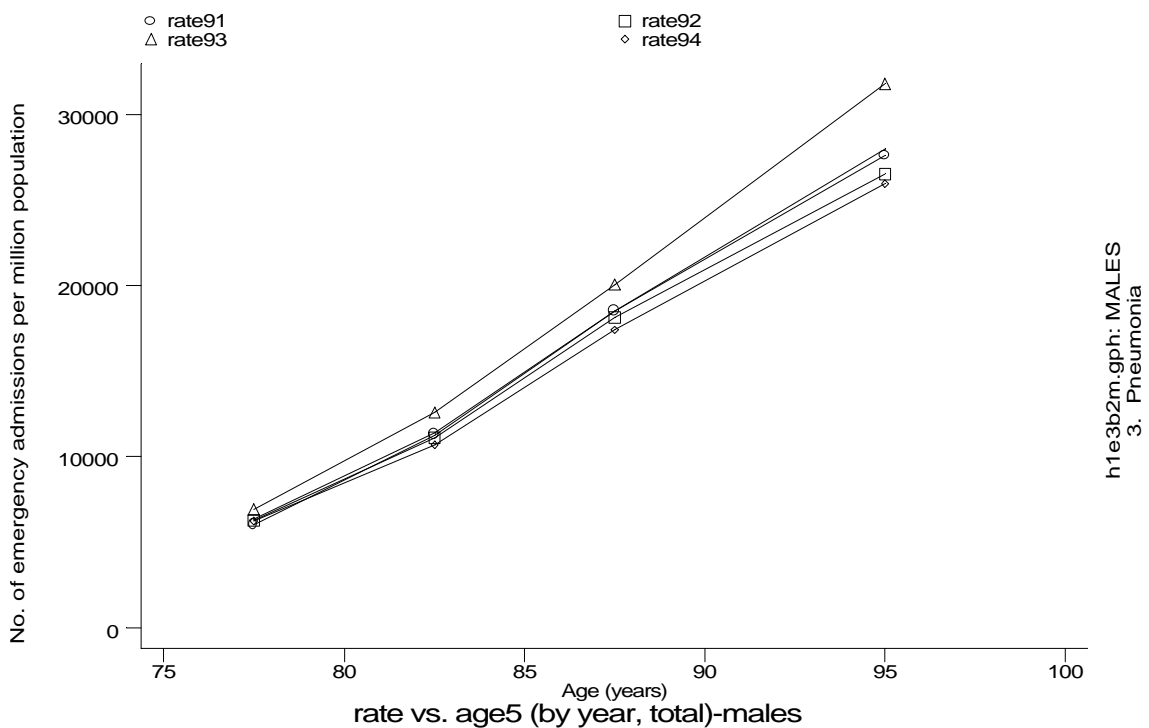
h1e3b2.gph
3. Pneumonia

Age-sex distributions, yearly trends and cohort analysis (crude rates)

- HES Emergency admissions, England 1991-94



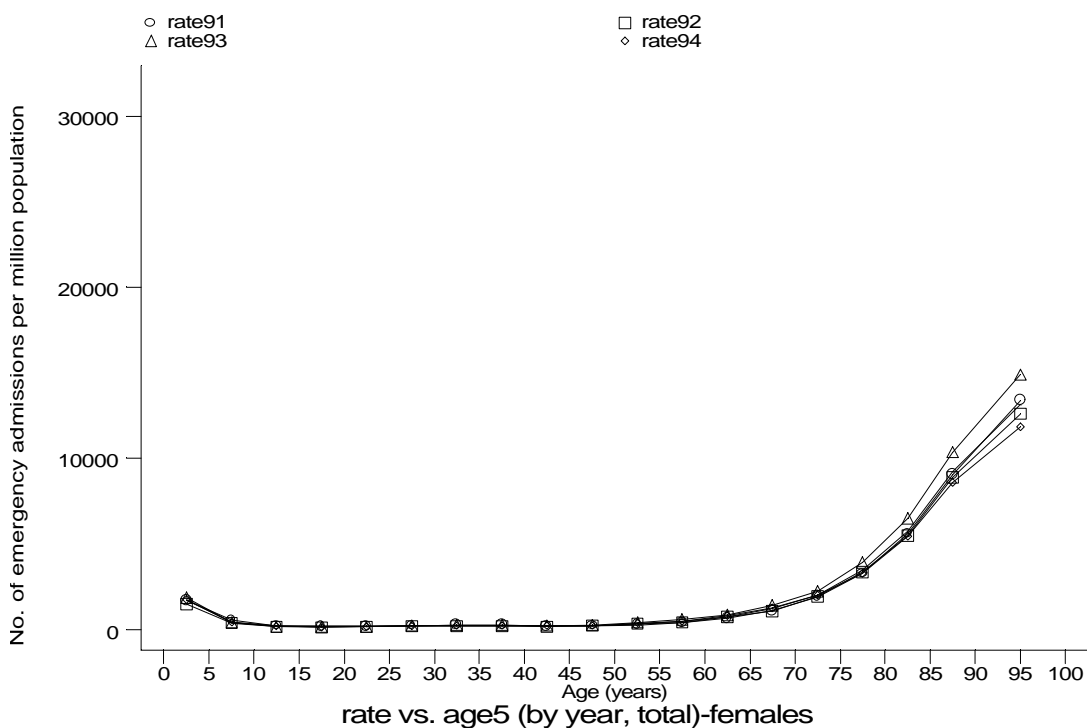
h1e3b1m.gph: MALES
3. Pneumonia



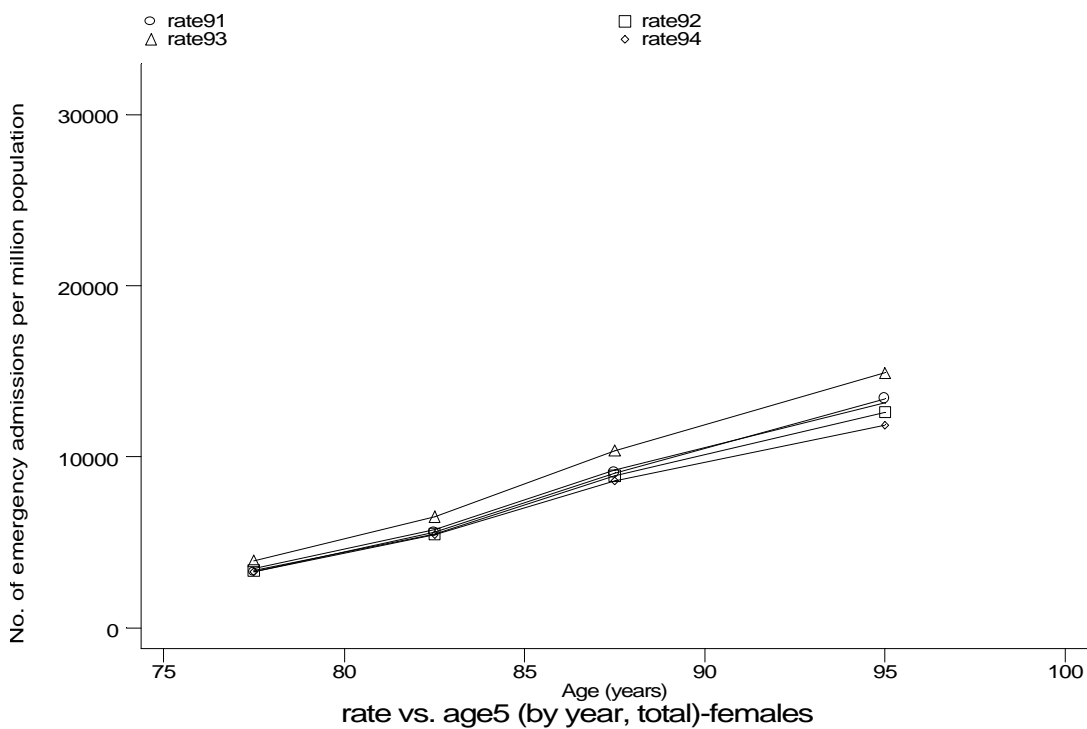
h1e3b2m.gph: MALES
3. Pneumonia

Age-sex distributions, yearly trends and cohort analysis (crude rates)

- HES Emergency admissions, England 1991-94



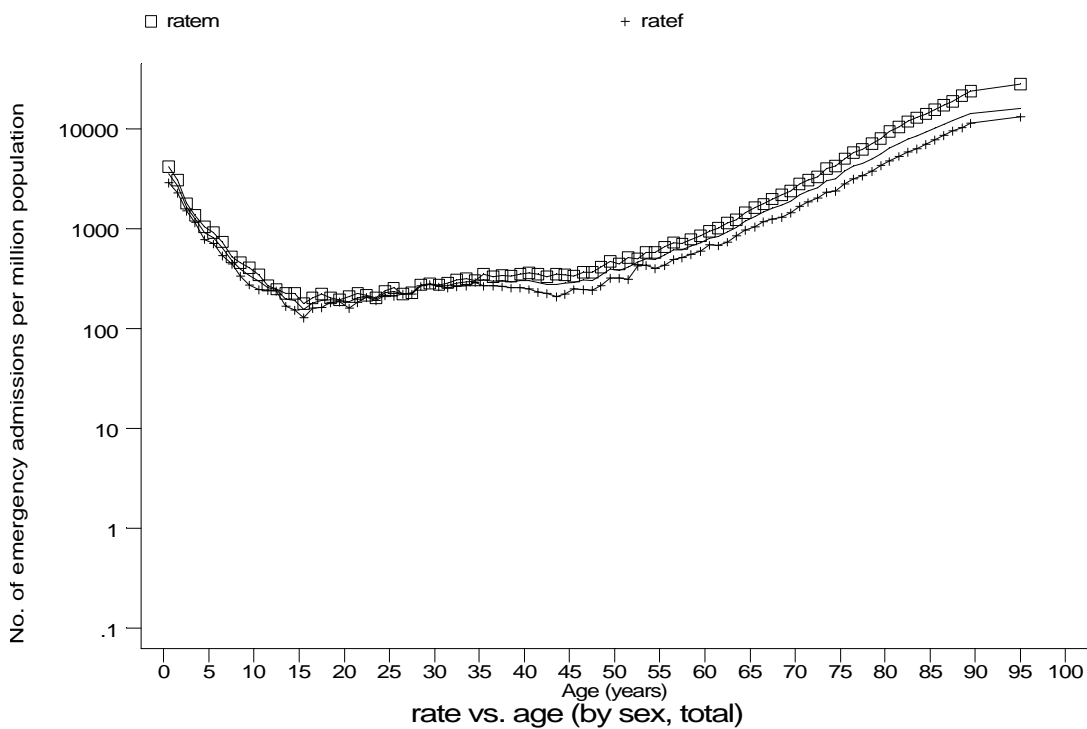
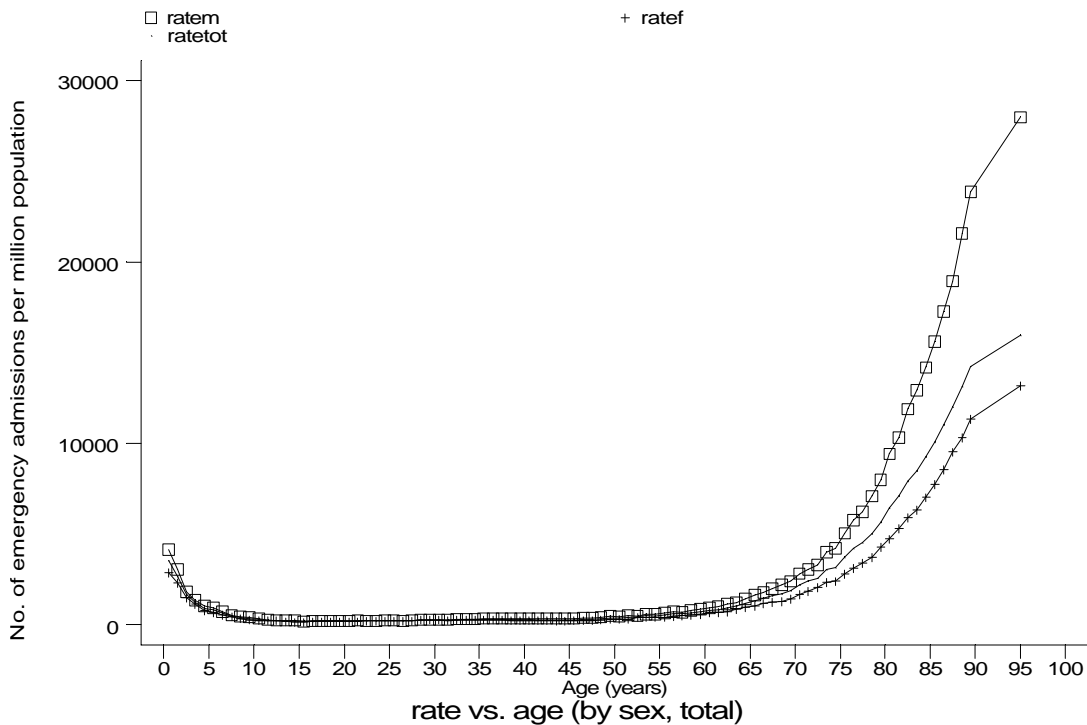
h1e3b1f.gph: FEMALES
3. Pneumonia



h1e3b2f.gph: FEMALES
3. Pneumonia

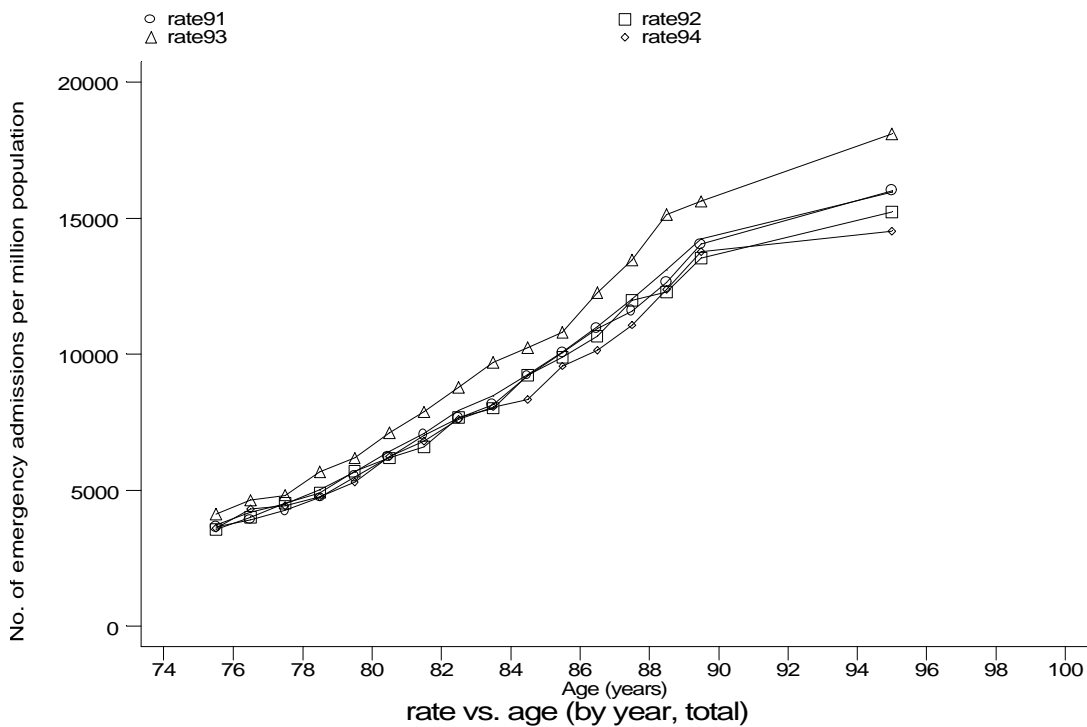
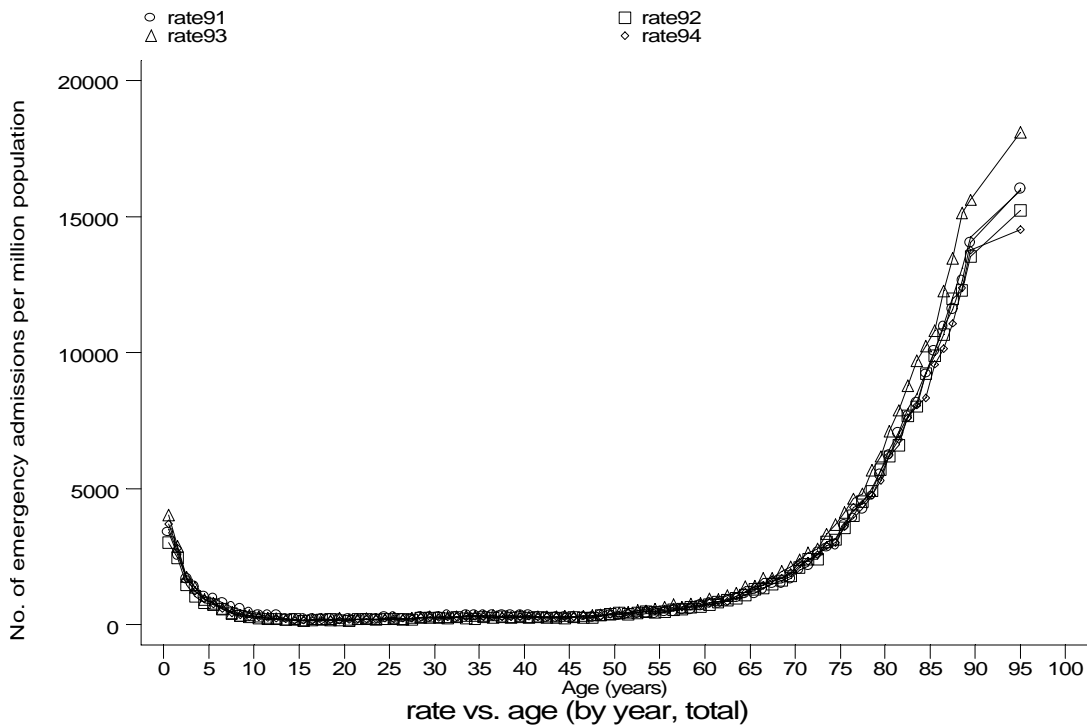
Age-sex distributions, yearly trends and cohort analysis (crude rates)

- HES Emergency admissions, England 1991-94



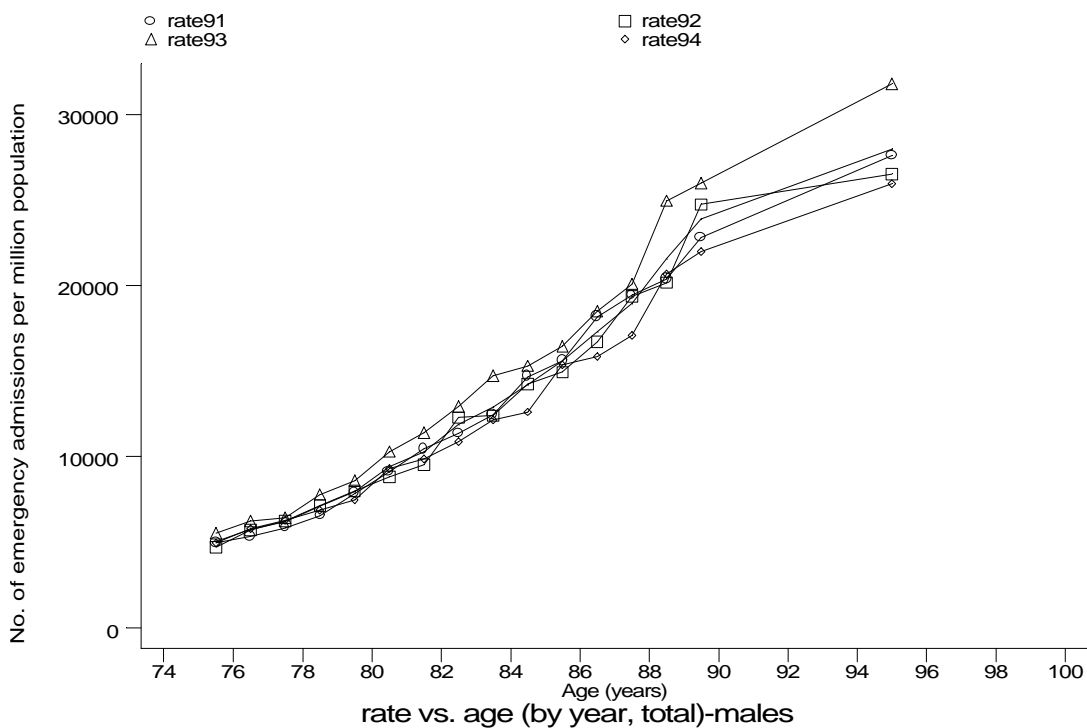
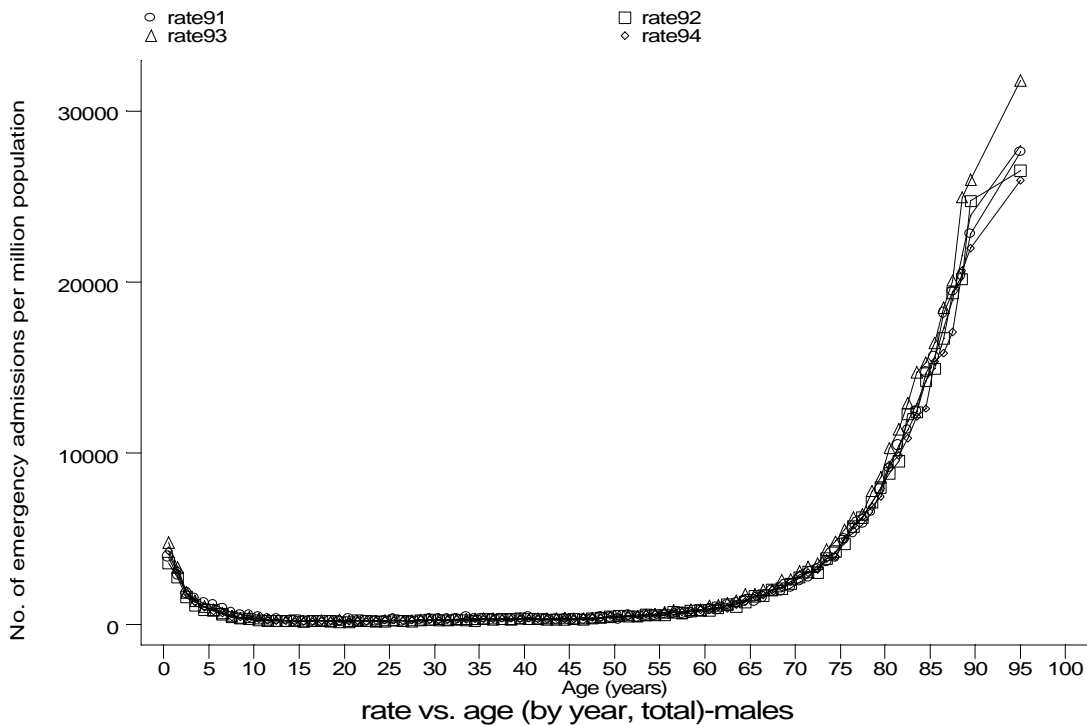
Age-sex distributions, yearly trends and cohort analysis (crude rates)

- HES Emergency admissions, England 1991-94



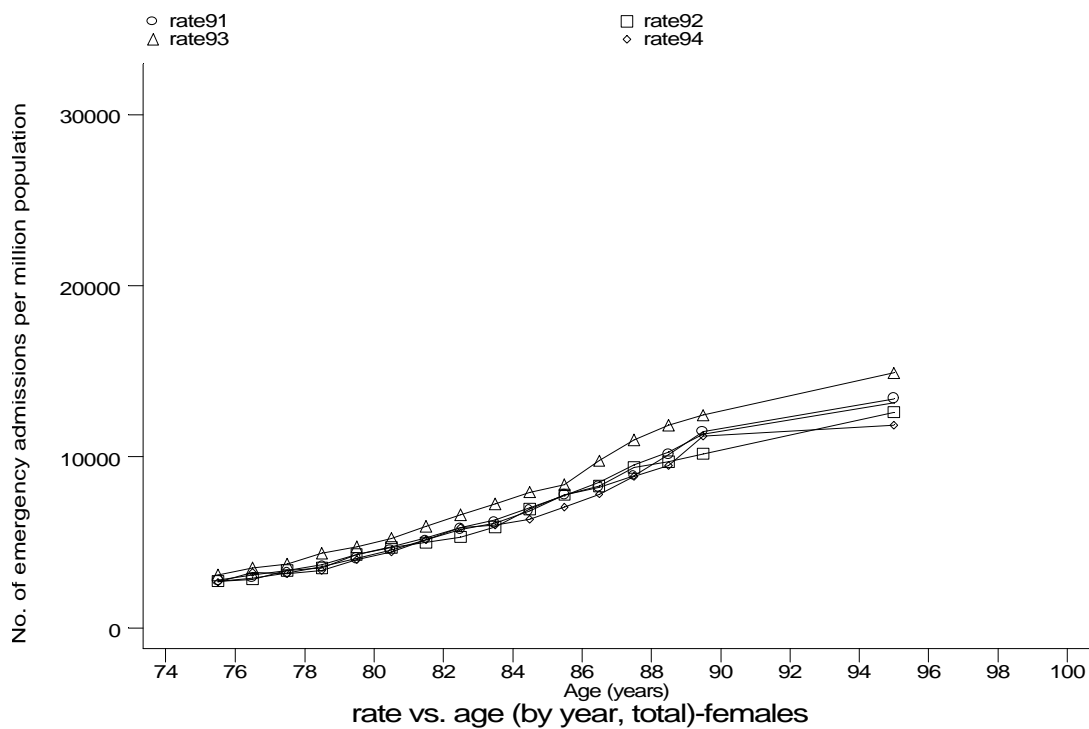
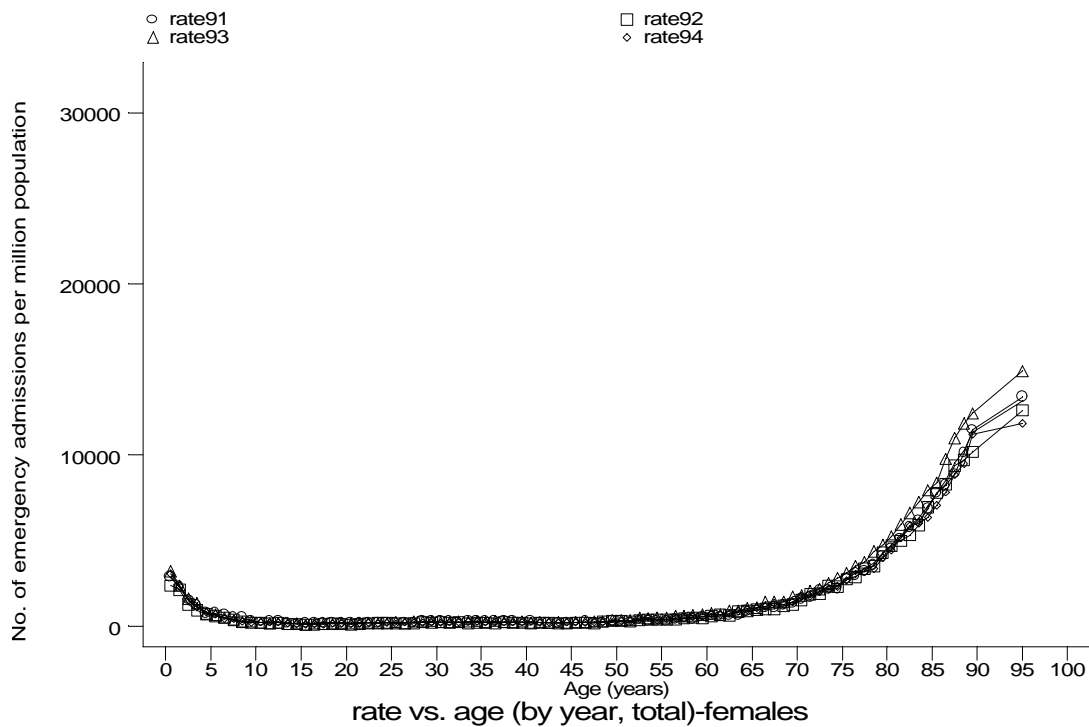
Age-sex distributions, yearly trends and cohort analysis (crude rates)

- HES Emergency admissions, England 1991-94



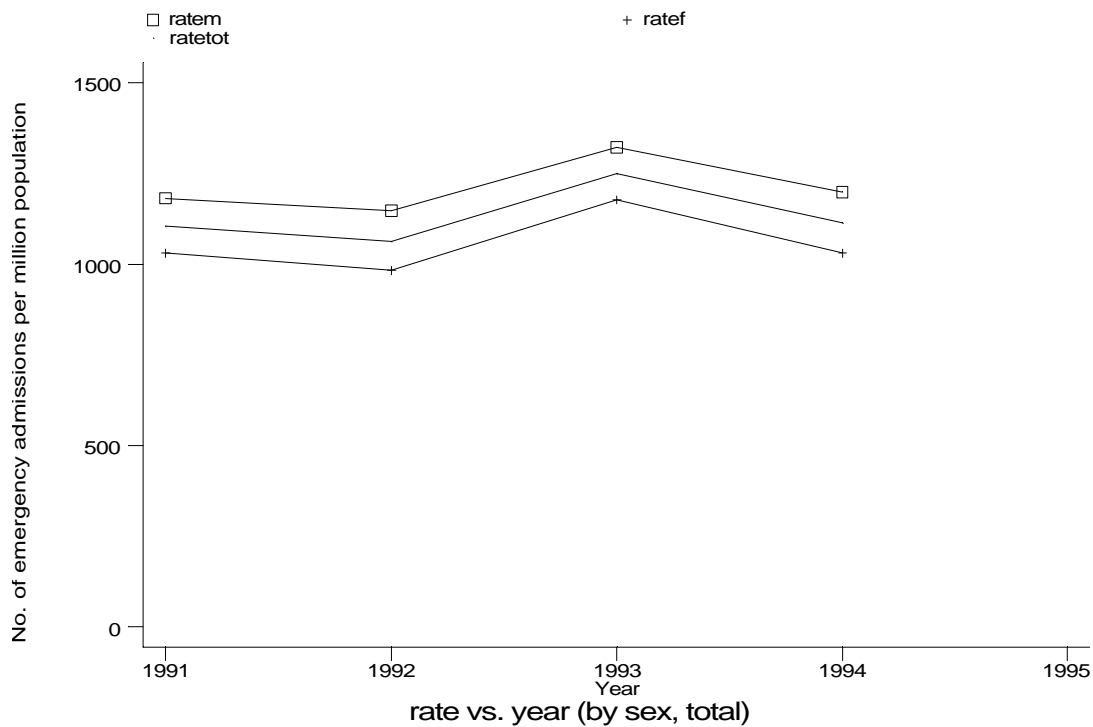
Age-sex distributions, yearly trends and cohort analysis (crude rates)

- HES Emergency admissions, England 1991-94

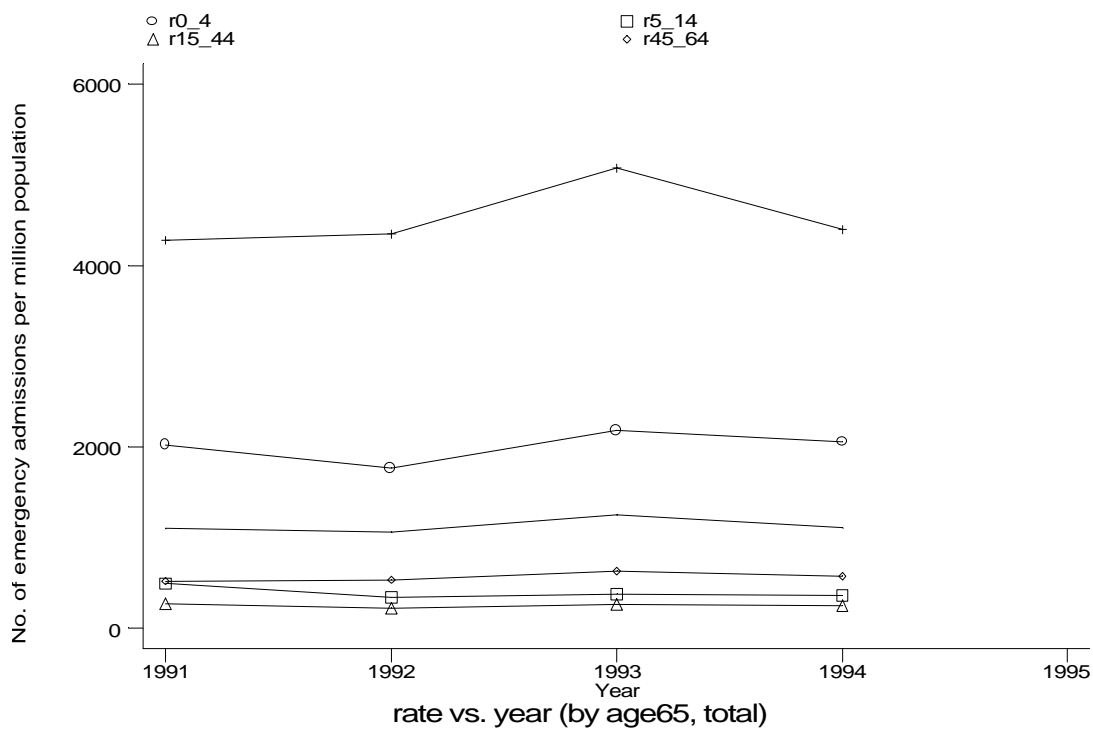


Age-sex distributions, yearly trends and cohort analysis (crude rates)

- HES Emergency admissions, England 1991-94



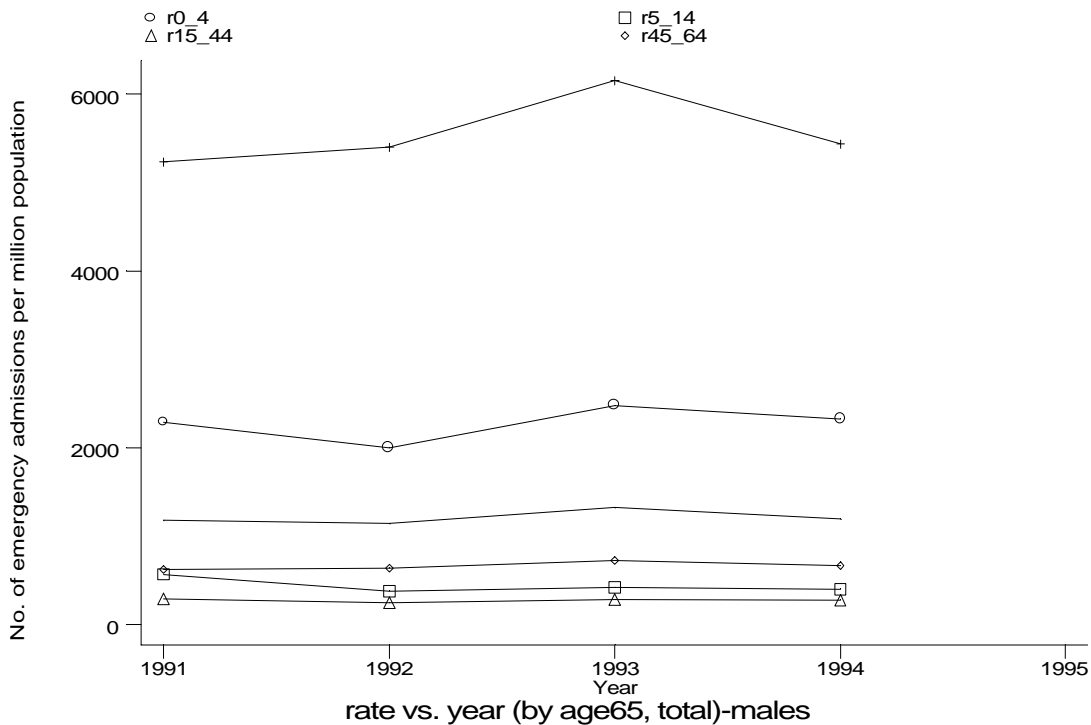
h1e3e.gph
3. Pneumonia



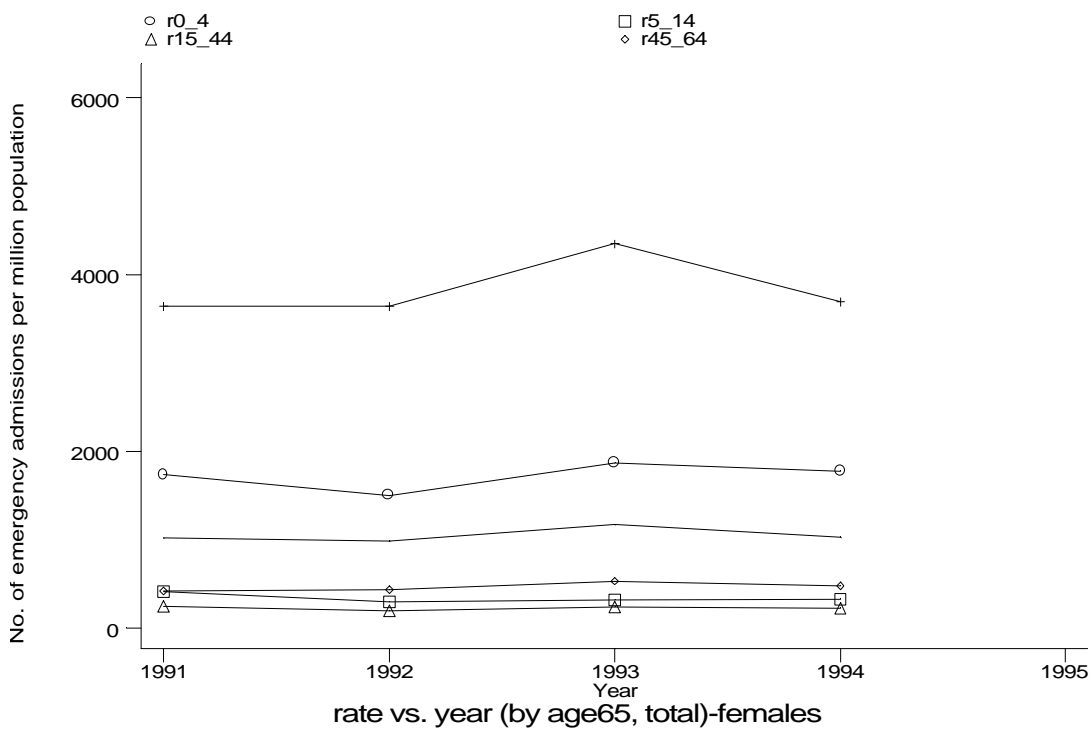
h1e3f.gph
3. Pneumonia

Age-sex distributions, yearly trends and cohort analysis (crude rates)

- HES Emergency admissions, England 1991-94



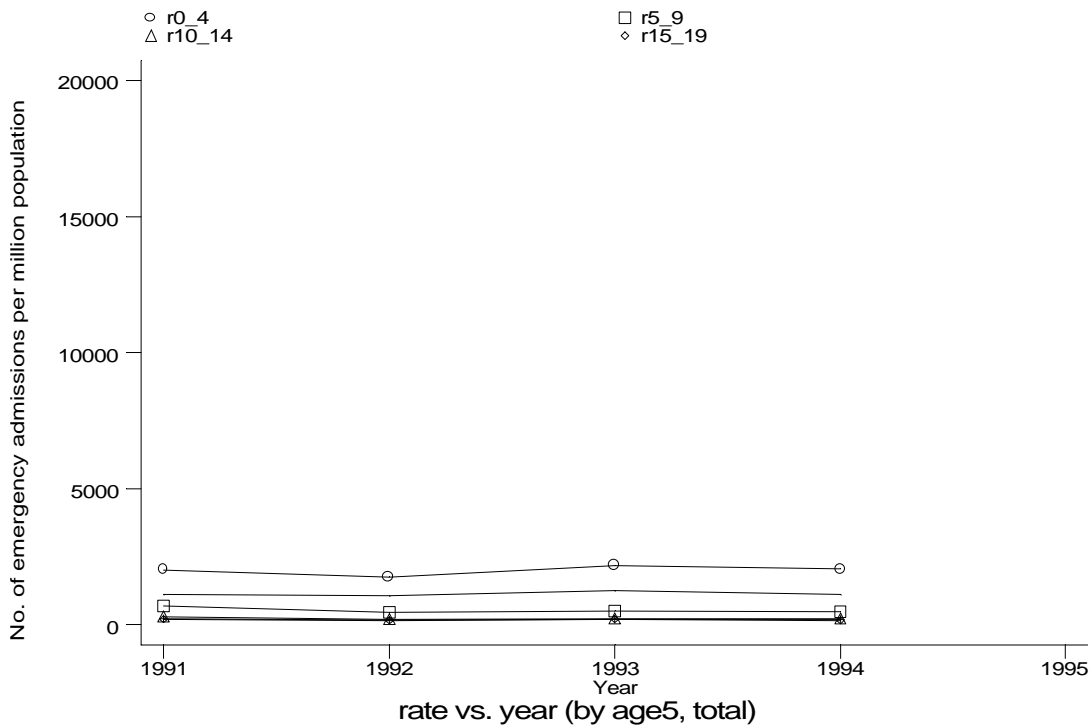
h1e3fm.gph: MALES
3. Pneumonia



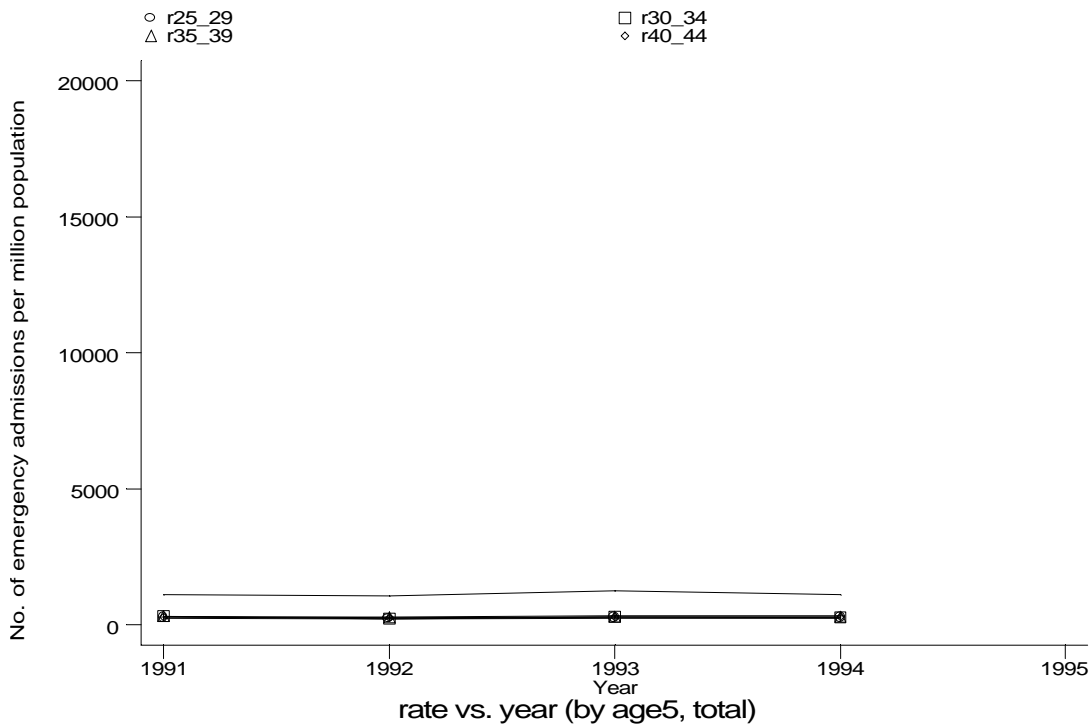
h1e3ff.gph: FEMALES
3. Pneumonia

Age-sex distributions, yearly trends and cohort analysis (crude rates)

- HES Emergency admissions, England 1991-94



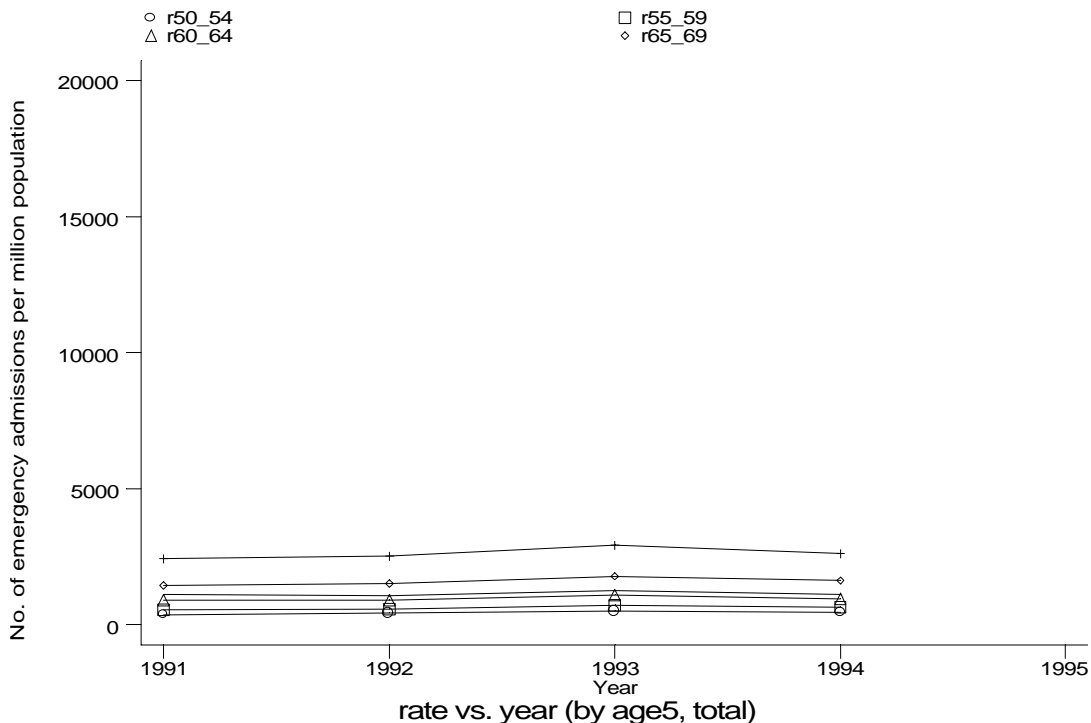
h1e3g1.gph
3. Pneumonia



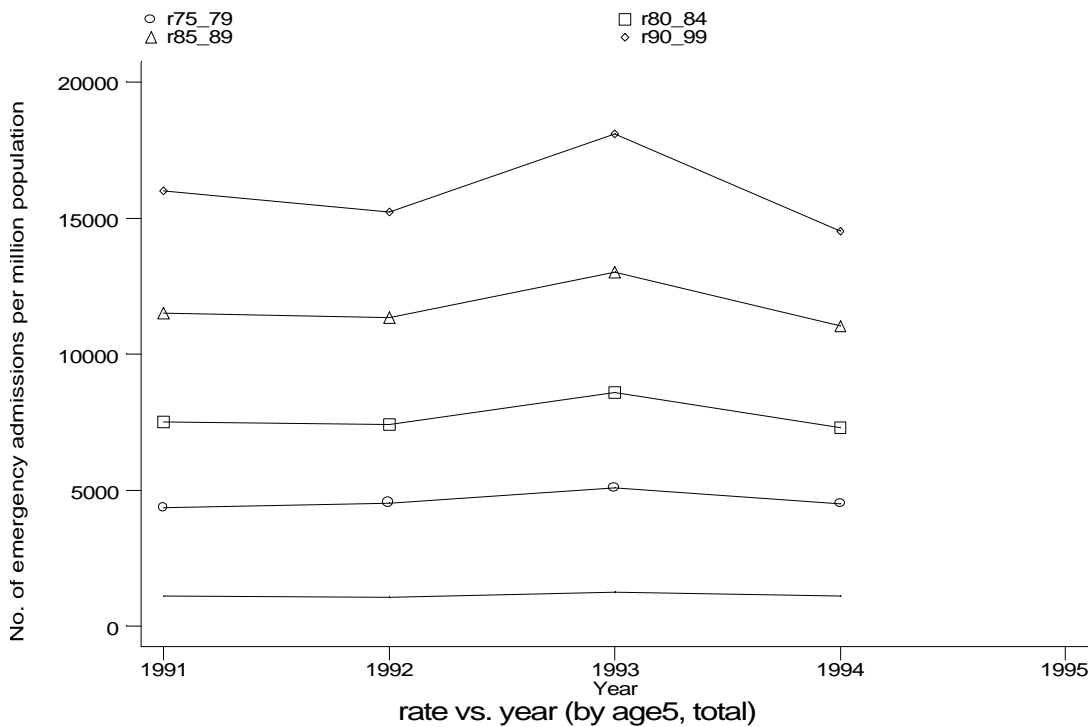
h1e3g2.gph
3. Pneumonia

Age-sex distributions, yearly trends and cohort analysis (crude rates)

- HES Emergency admissions, England 1991-94



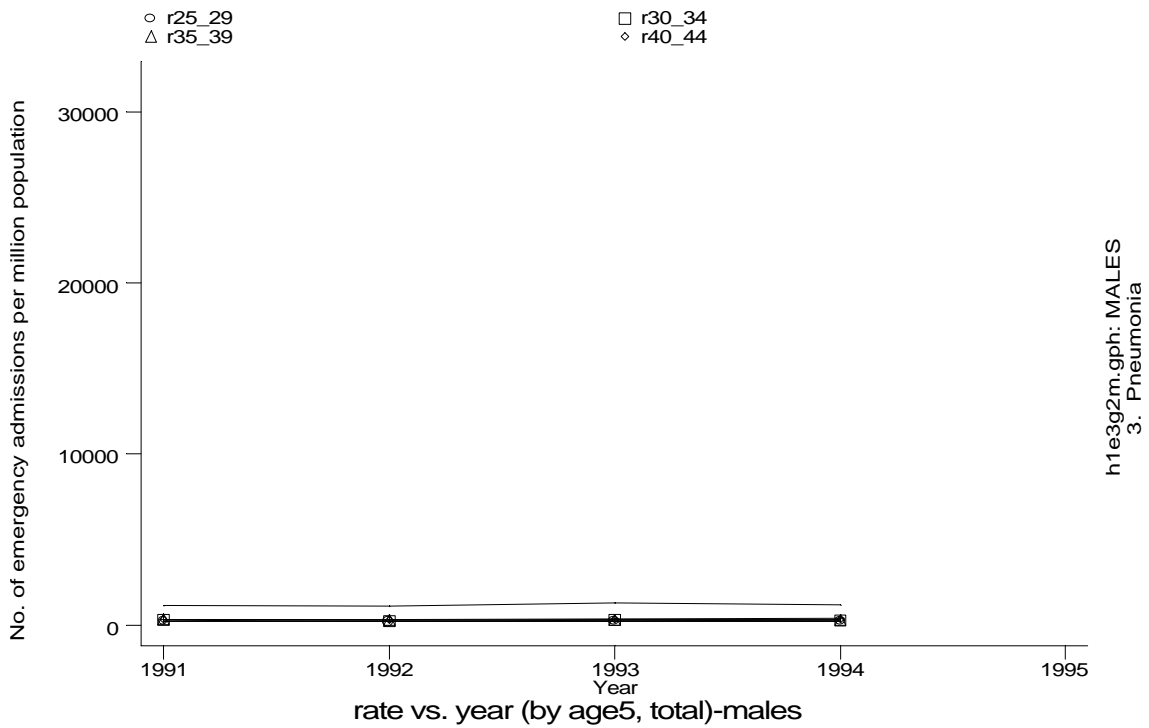
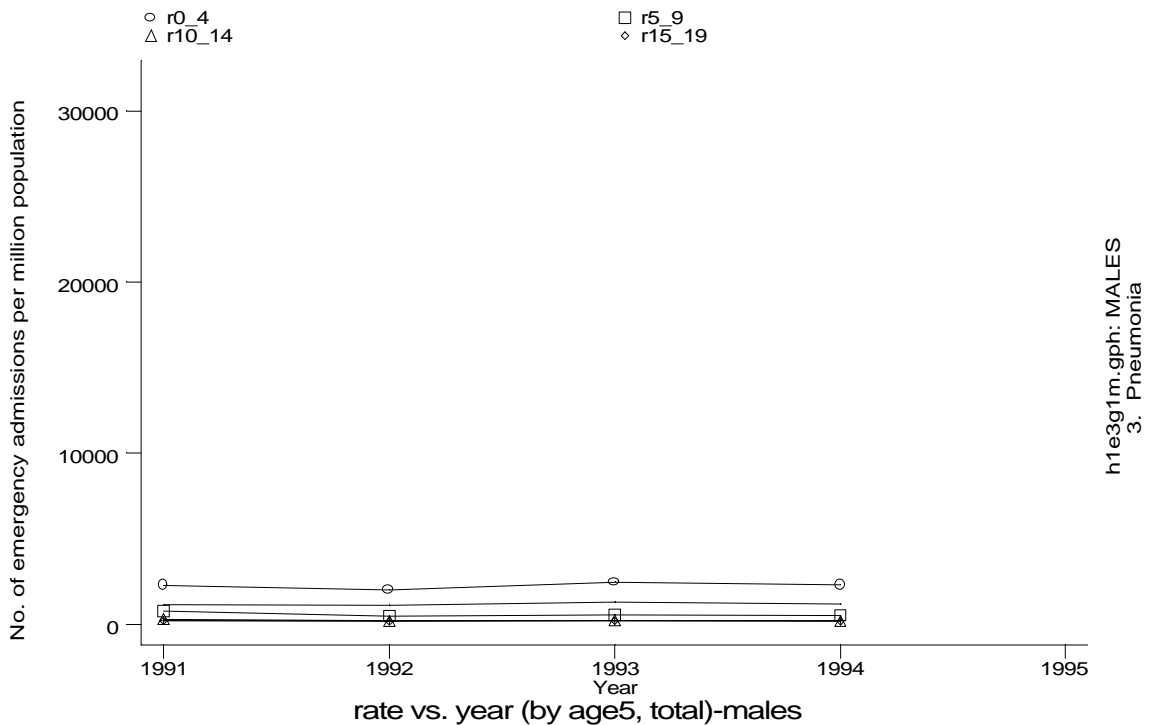
h1e3g3.gph
3. Pneumonia



h1e3g4.gph
3. Pneumonia

Age-sex distributions, yearly trends and cohort analysis (crude rates)

- HES Emergency admissions, England 1991-94



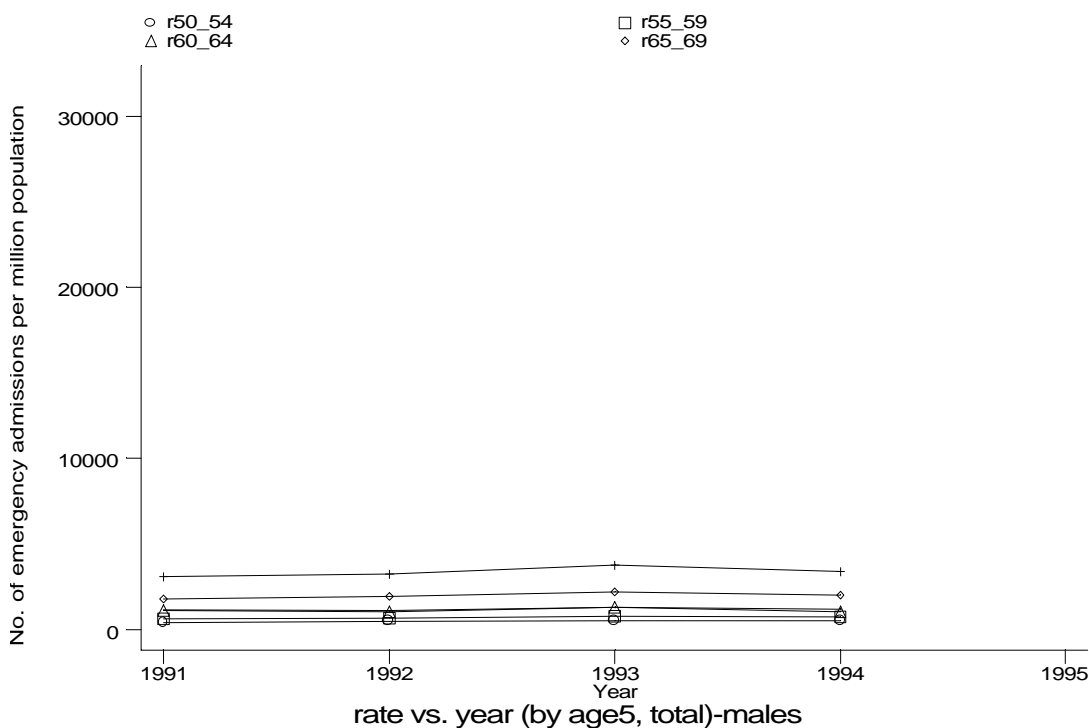
h1e3g1m.gph: MALES
3. Pneumonia

h1e3g2m.gph: MALES
3. Pneumonia

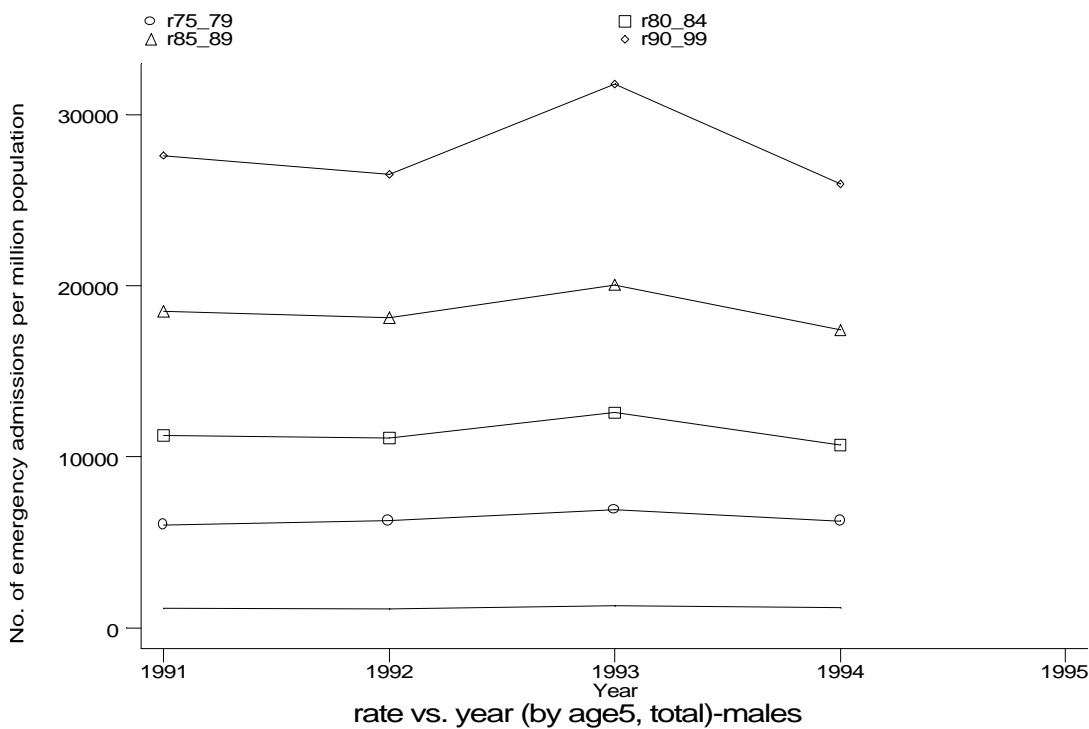
A9 Pneumonia standard output graphs

Age-sex distributions, yearly trends and cohort analysis (crude rates)

- **HES Emergency admissions, England 1991-94**



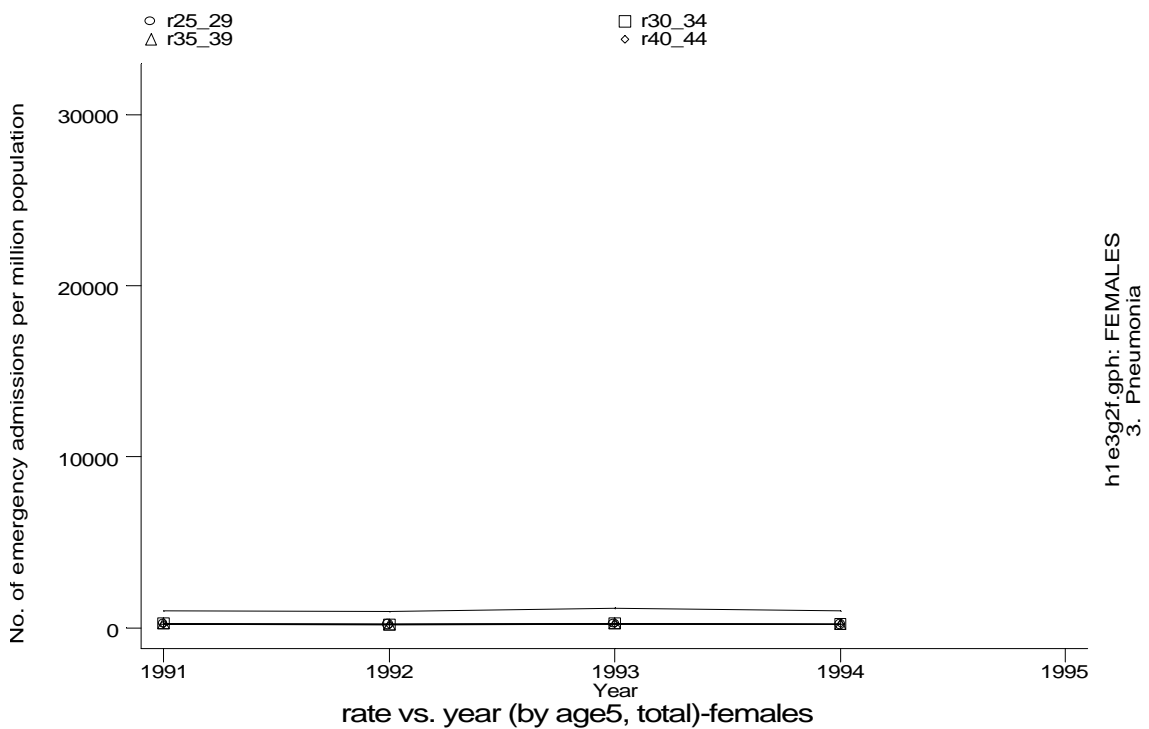
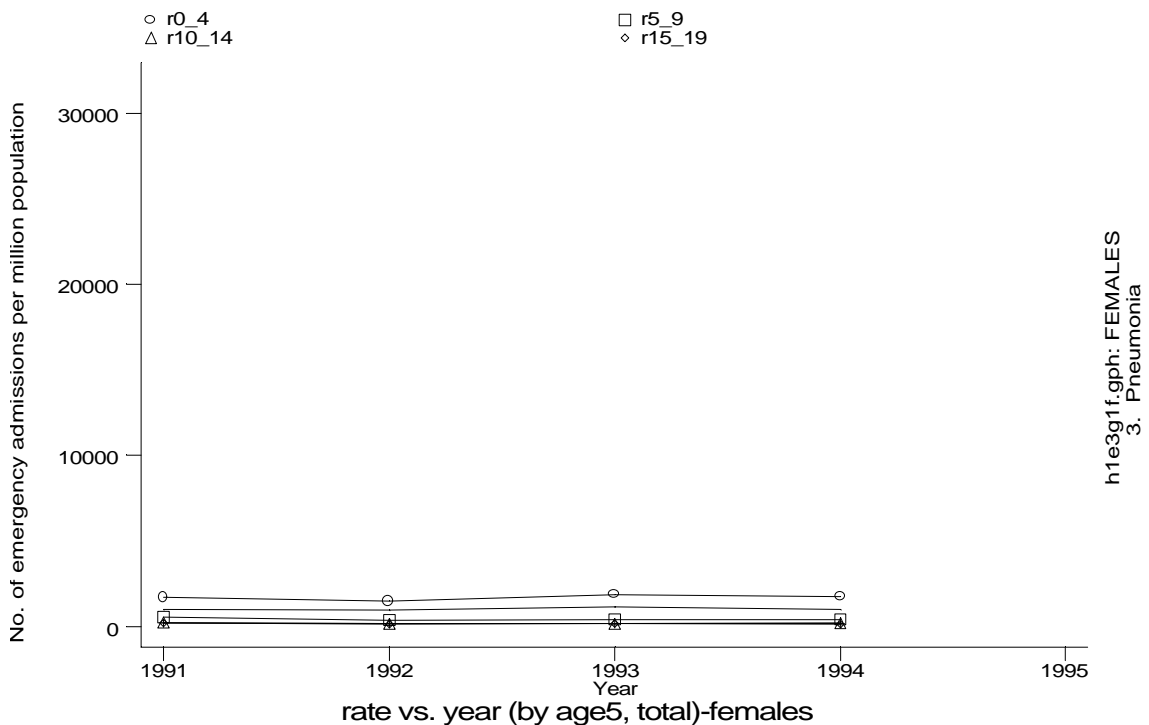
h1e3g3m.gph: MALES
3. Pneumonia



h1e3g4m.gph: MALES
3. Pneumonia

Age-sex distributions, yearly trends and cohort analysis (crude rates)

- HES Emergency admissions, England 1991-94

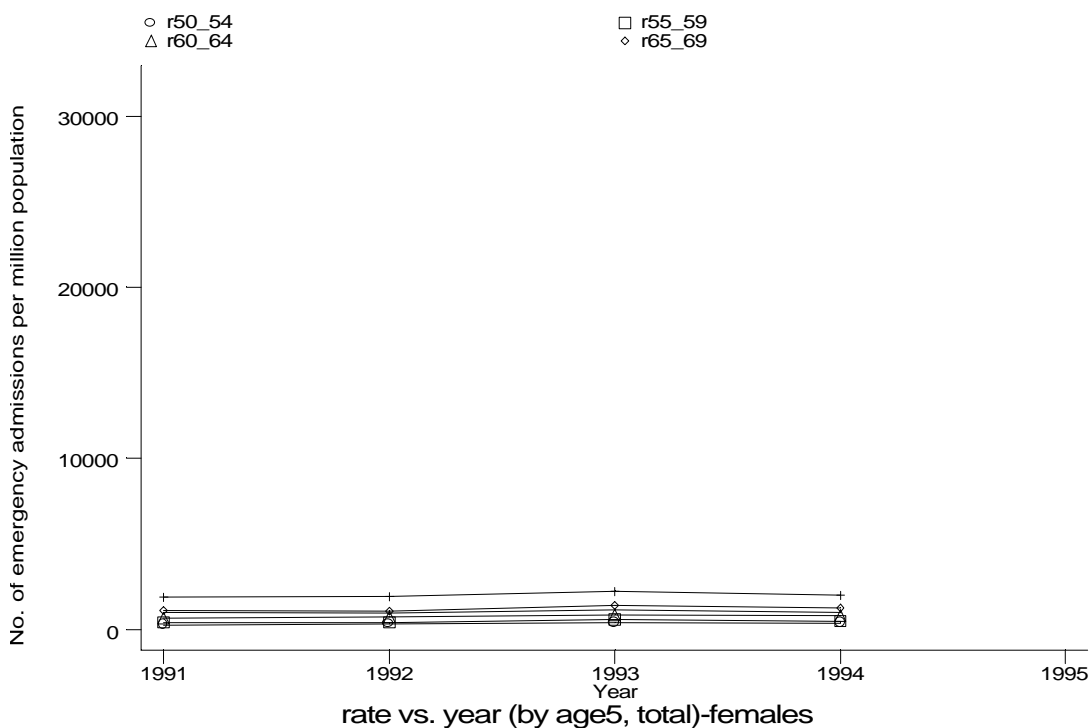


h1e3g1f.gph: FEMALES
3. Pneumonia

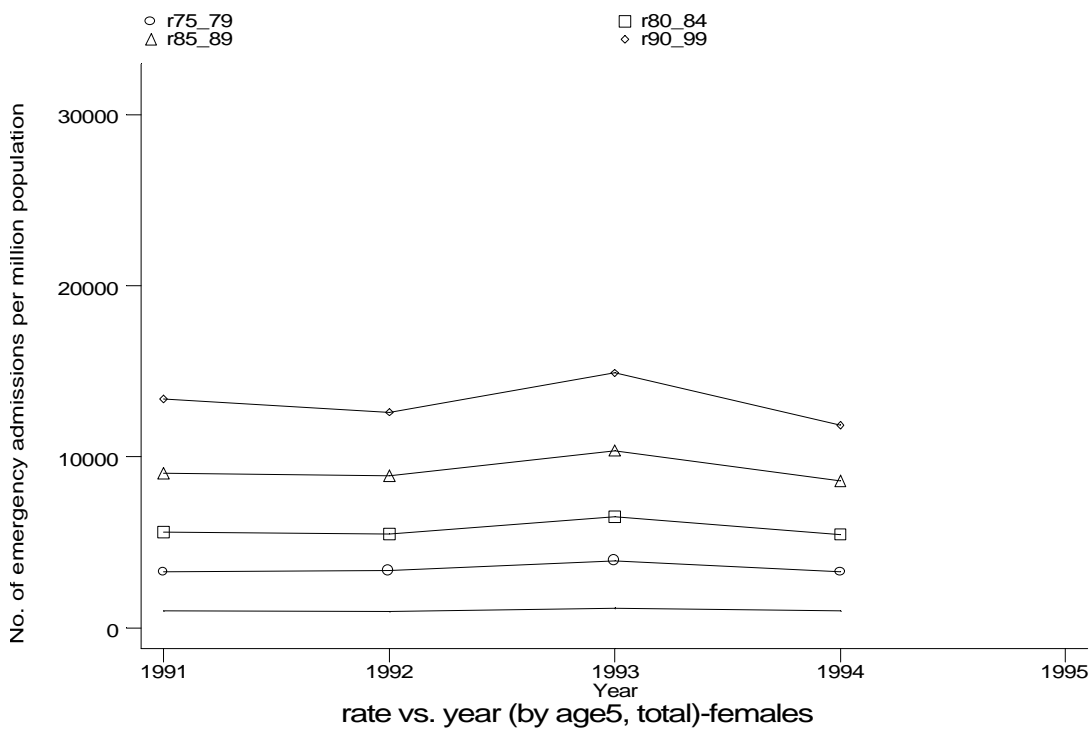
h1e3g2f.gph: FEMALES
3. Pneumonia

Age-sex distributions, yearly trends and cohort analysis (crude rates)

- HES Emergency admissions, England 1991-94



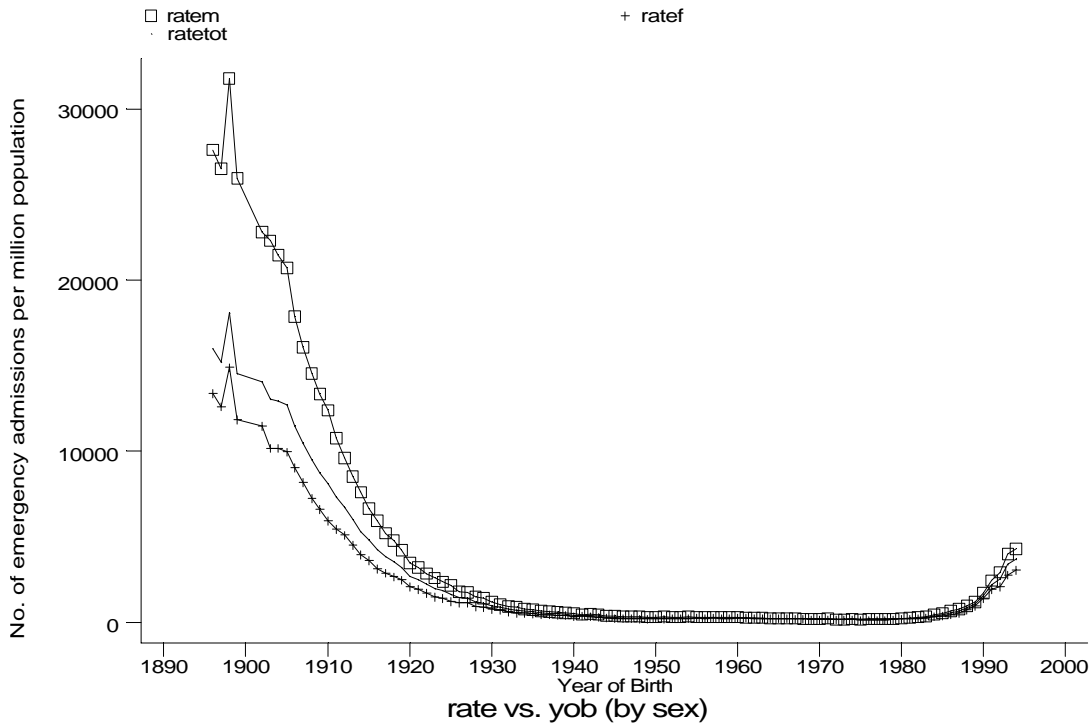
h1e3g3f.gph: FEMALES
3. Pneumonia



h1e3g4f.gph: FEMALES
3. Pneumonia

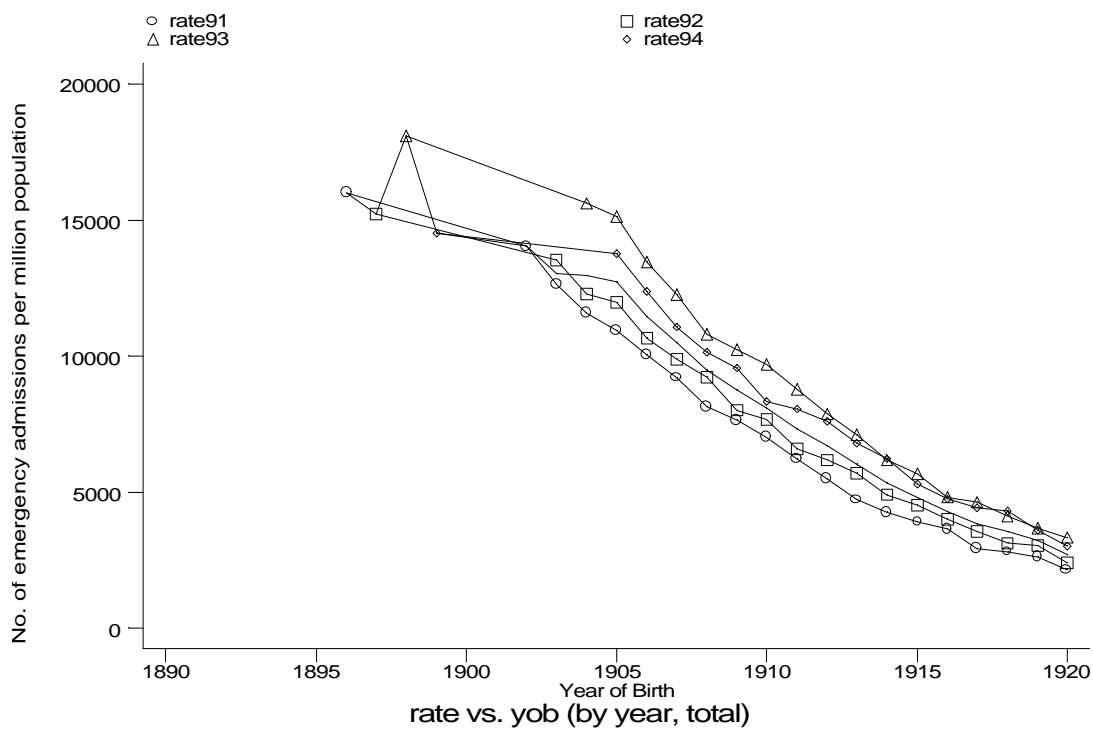
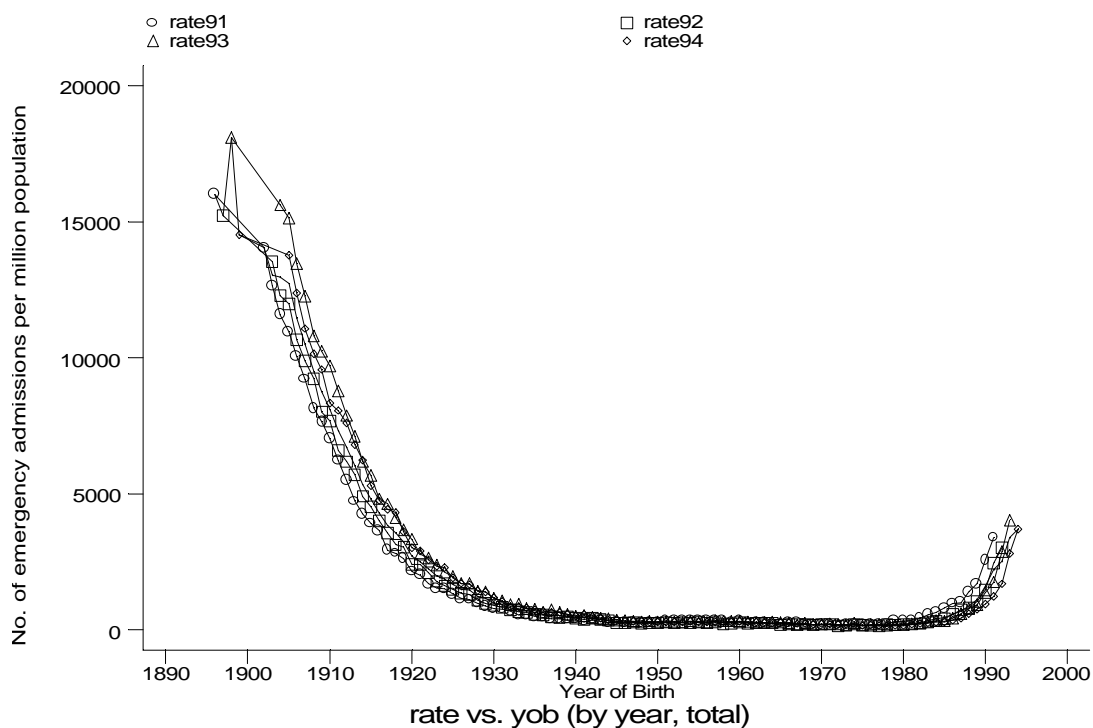
Age-sex distributions, yearly trends and cohort analysis (crude rates)

- HES Emergency admissions, England 1991-94



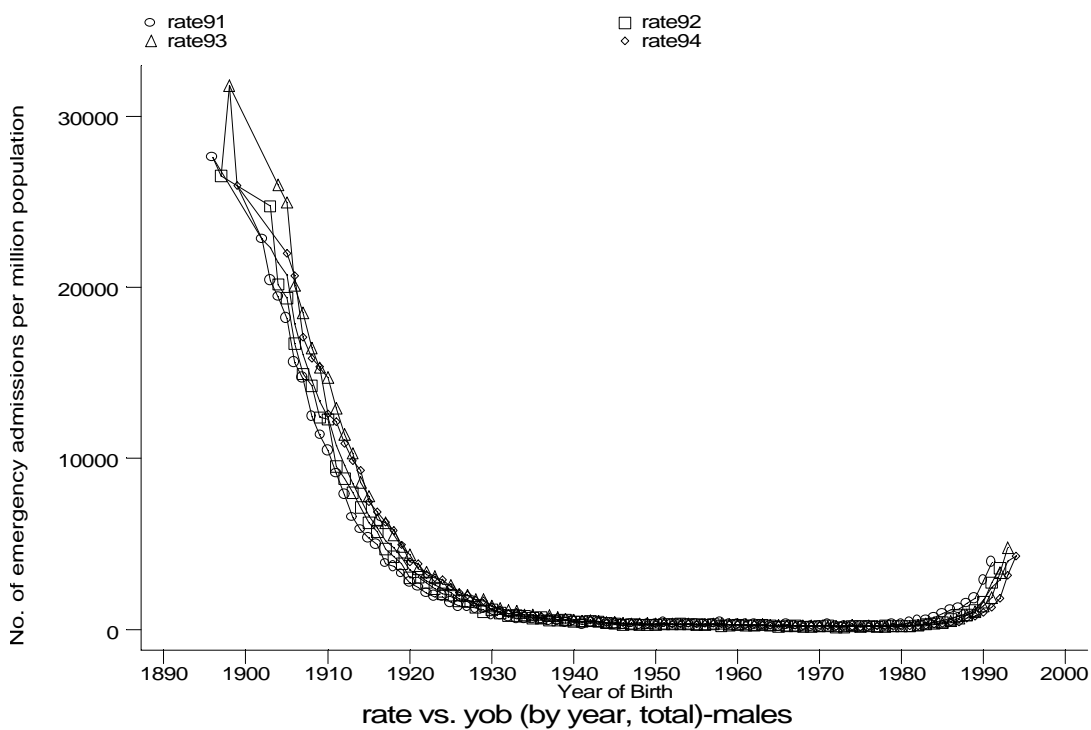
Age-sex distributions, yearly trends and cohort analysis (crude rates)

- HES Emergency admissions, England 1991-94

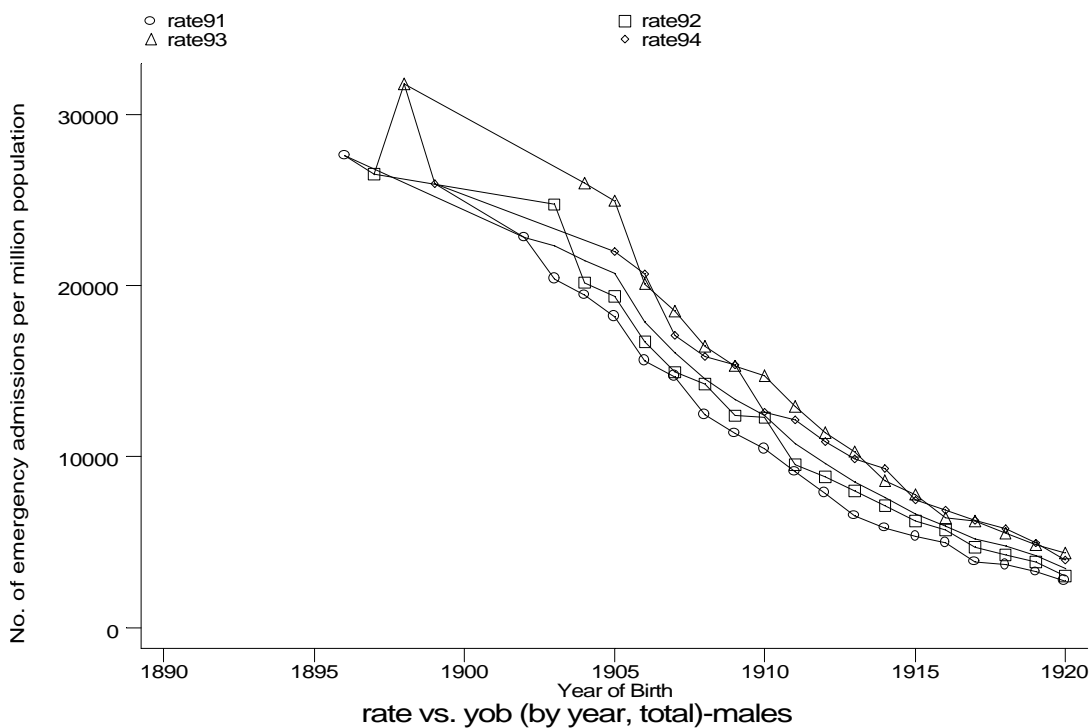


Age-sex distributions, yearly trends and cohort analysis (crude rates)

- HES Emergency admissions, England 1991-94



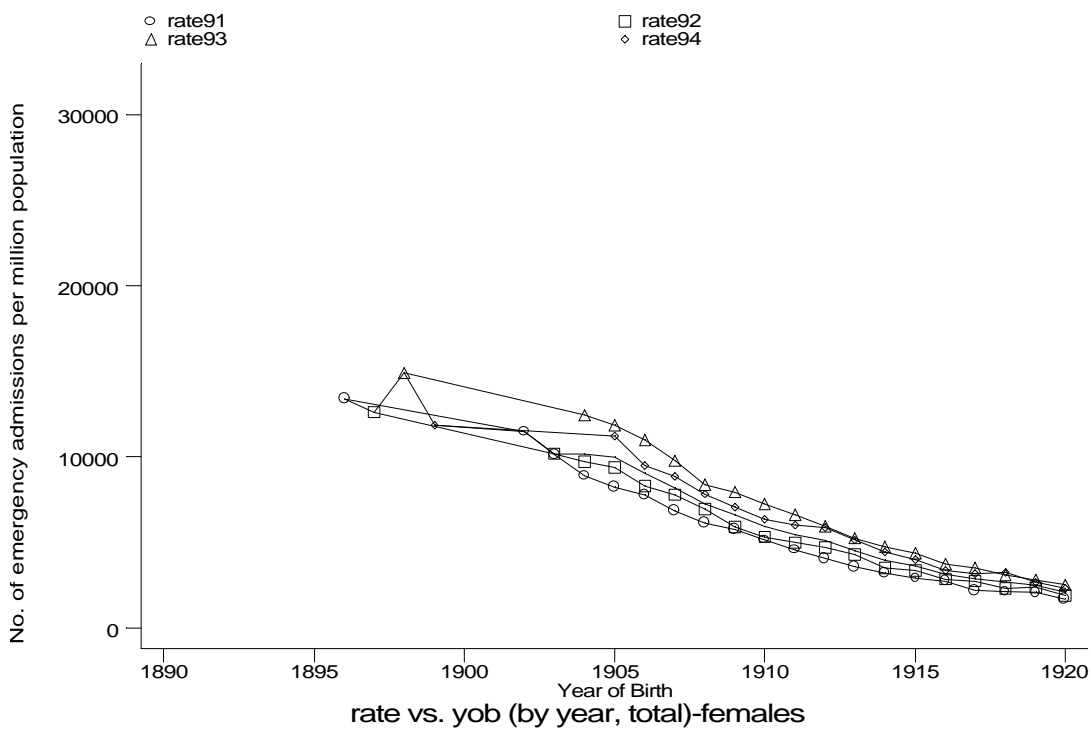
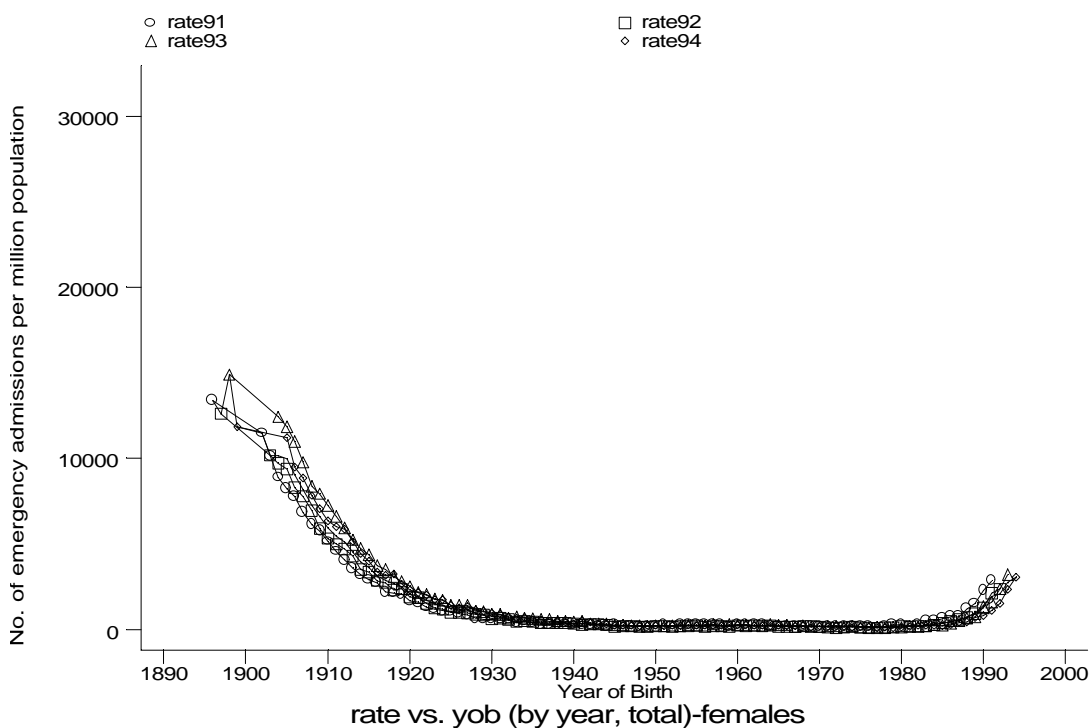
h1e31m.gph: MALES
3. Pneumonia



h1e32m.gph: MALES
3. Pneumonia

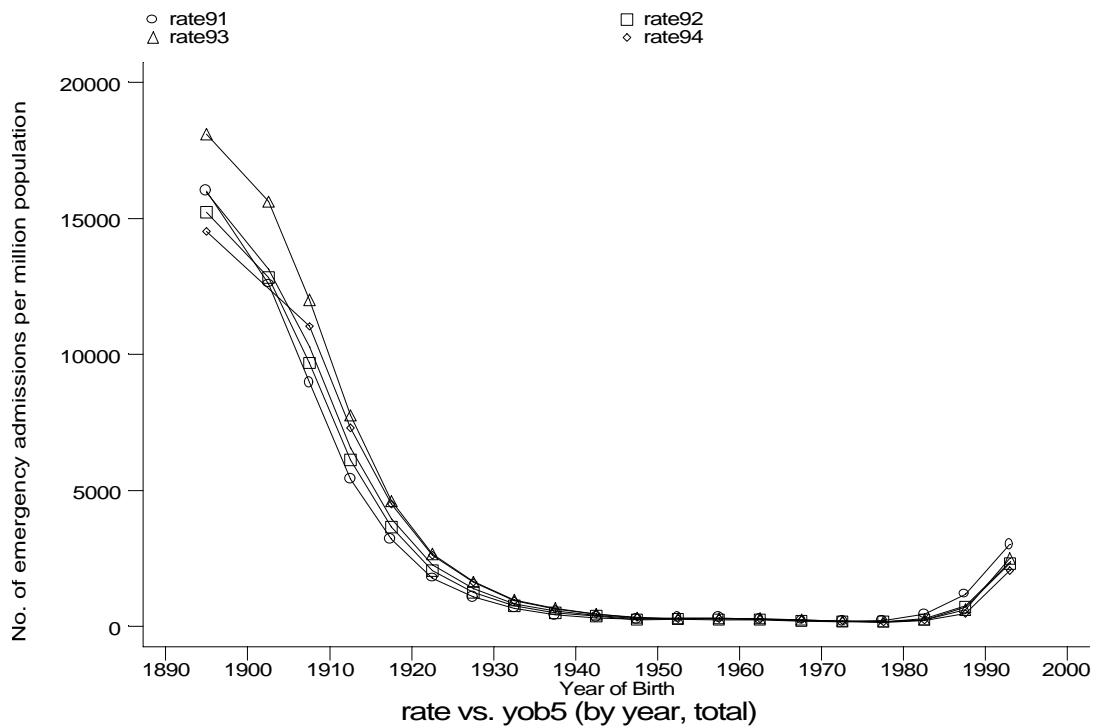
Age-sex distributions, yearly trends and cohort analysis (crude rates)

- HES Emergency admissions, England 1991-94

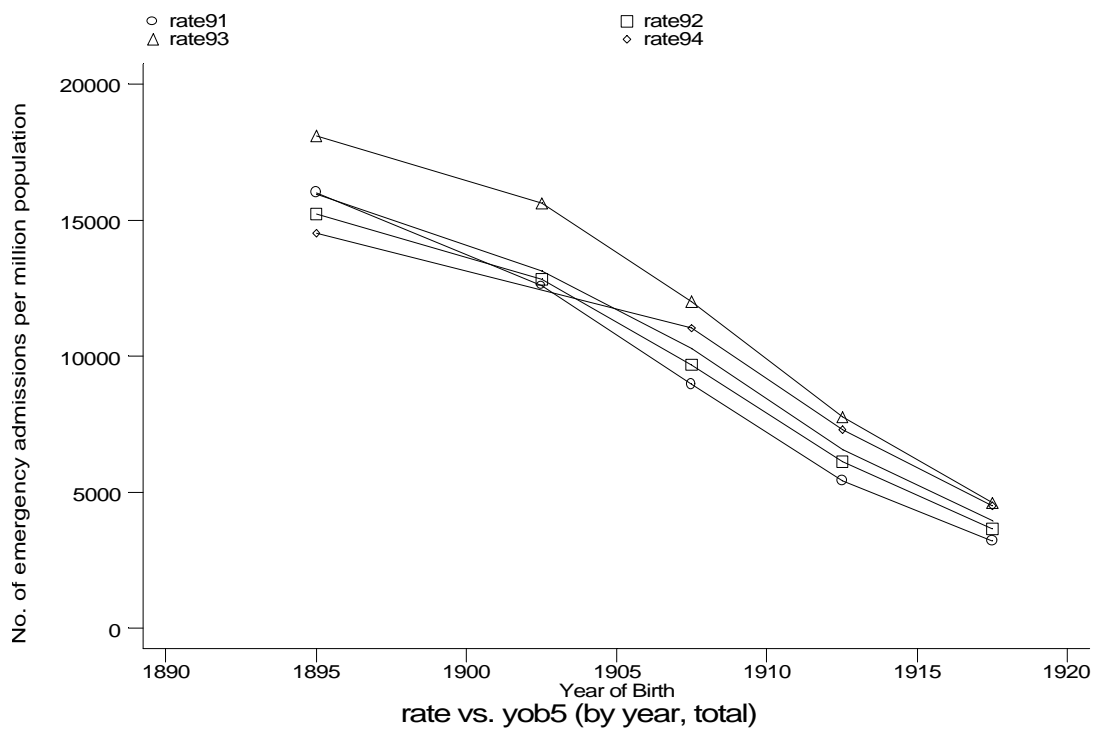


Age-sex distributions, yearly trends and cohort analysis (crude rates)

- HES Emergency admissions, England 1991-94



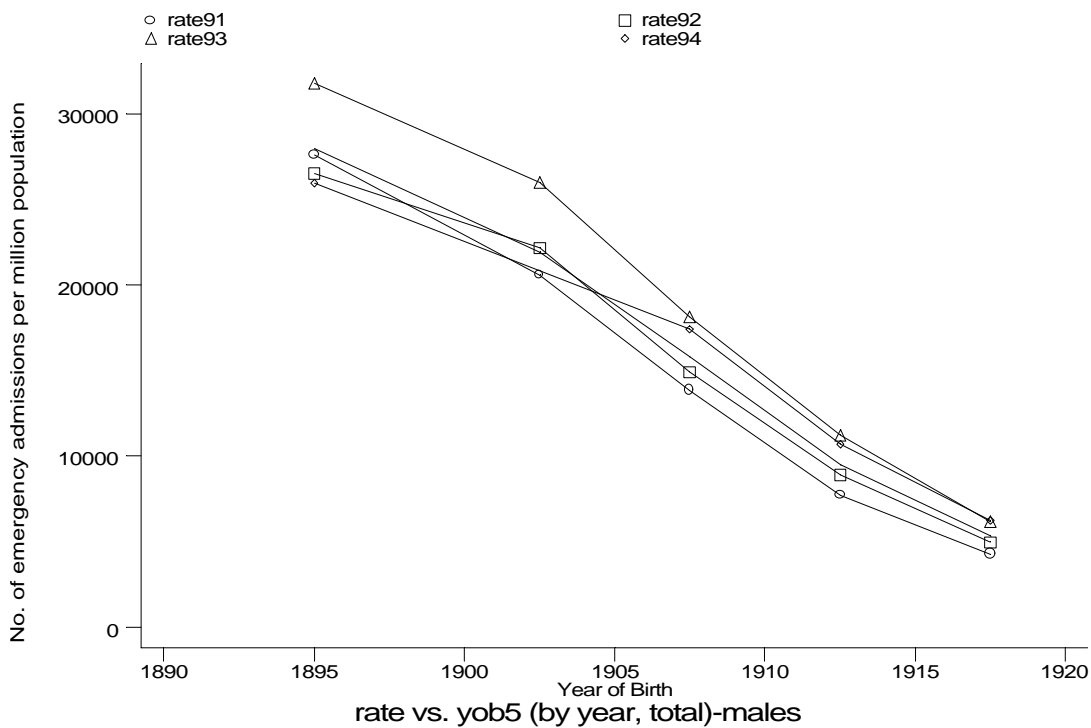
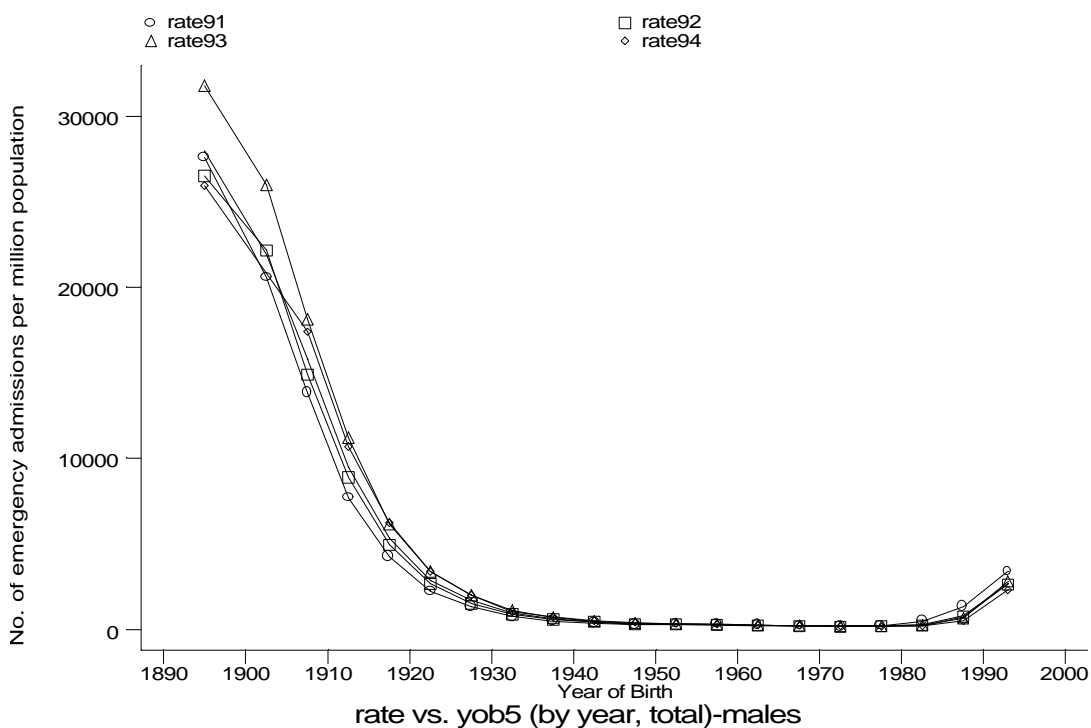
h1e3j1.gph
3. Pneumonia



h1e3j2.gph
3. Pneumonia

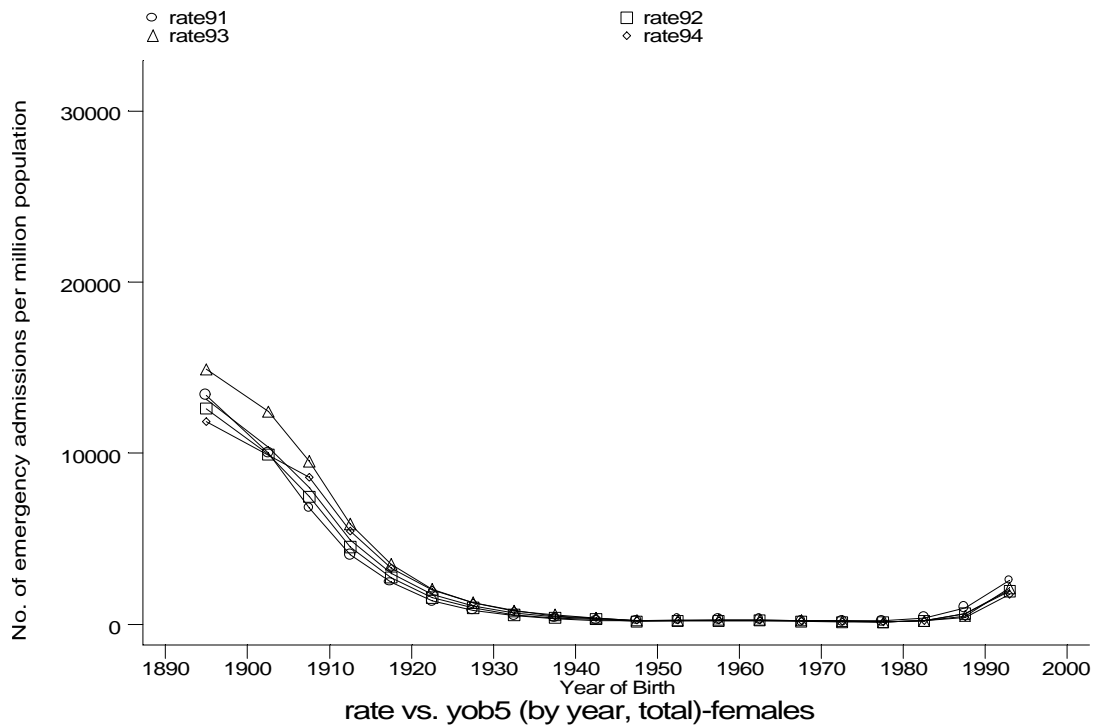
Age-sex distributions, yearly trends and cohort analysis (crude rates)

- HES Emergency admissions, England 1991-94

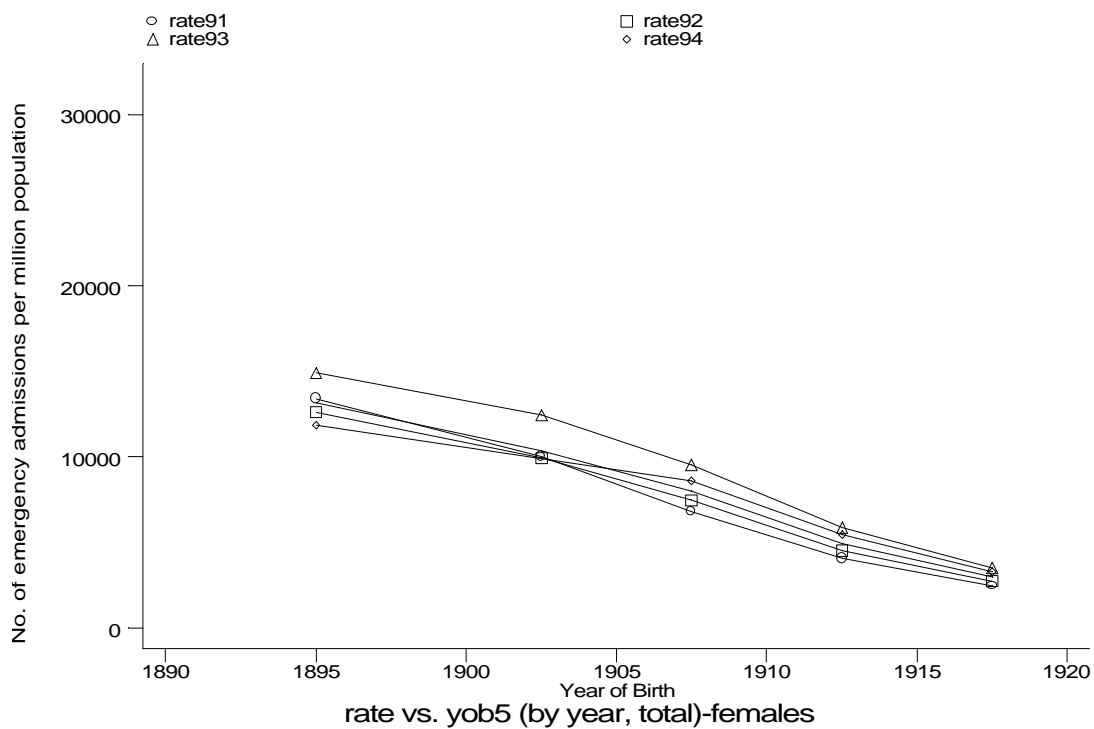


Age-sex distributions, yearly trends and cohort analysis (crude rates)

- HES Emergency admissions, England 1991-94



h1e3j1f.gph: FEMALES
3. Pneumonia



h1e3j2f.gph: FEMALES
3. Pneumonia