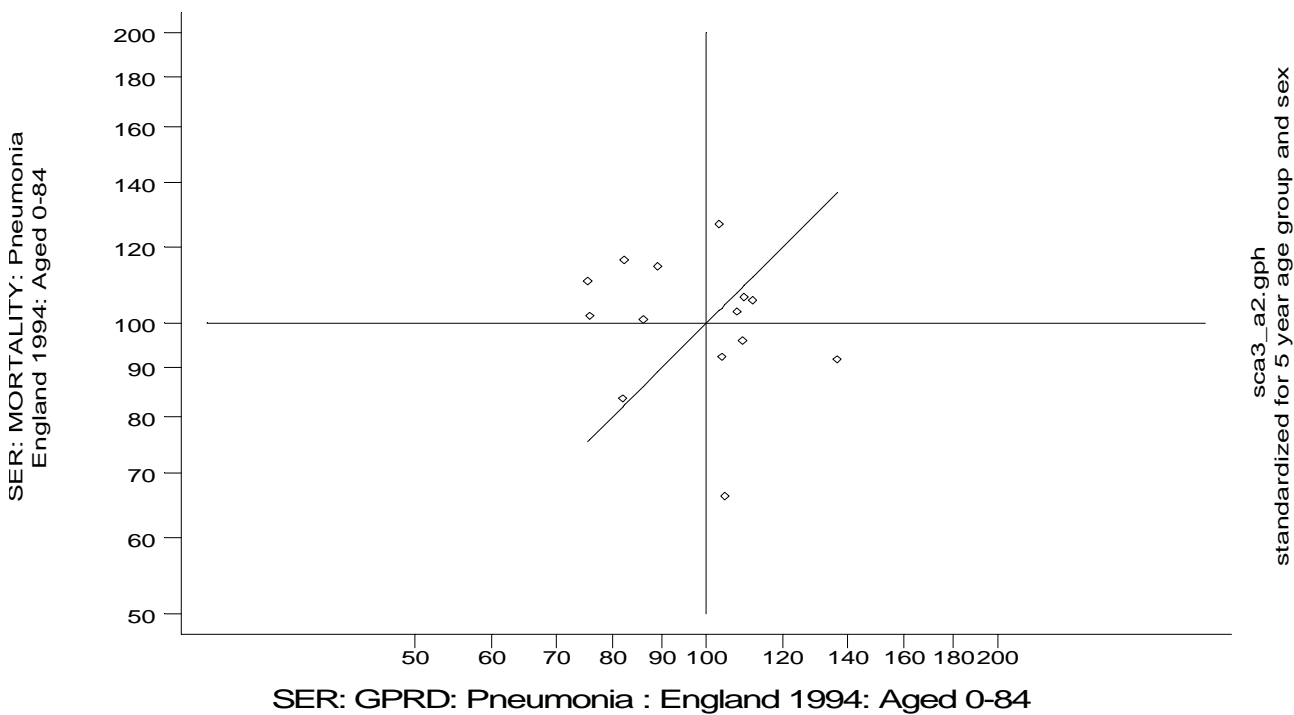
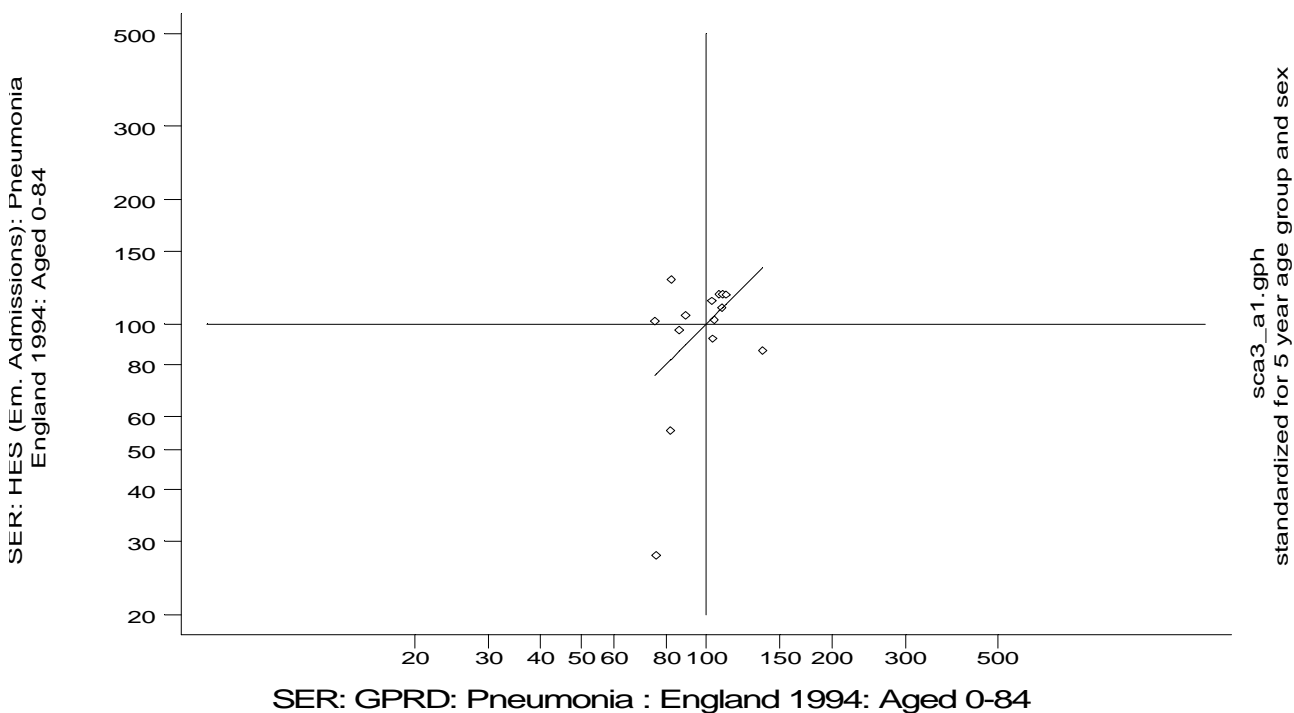


## A9 Pneumonia standard output graphs

Scatterplots and correlation coefficients (standardised event ratios standardised for age and sex)

- regional comparisons between HSE95, GPRD, HES and Mortality, England 1994, ages 0-84

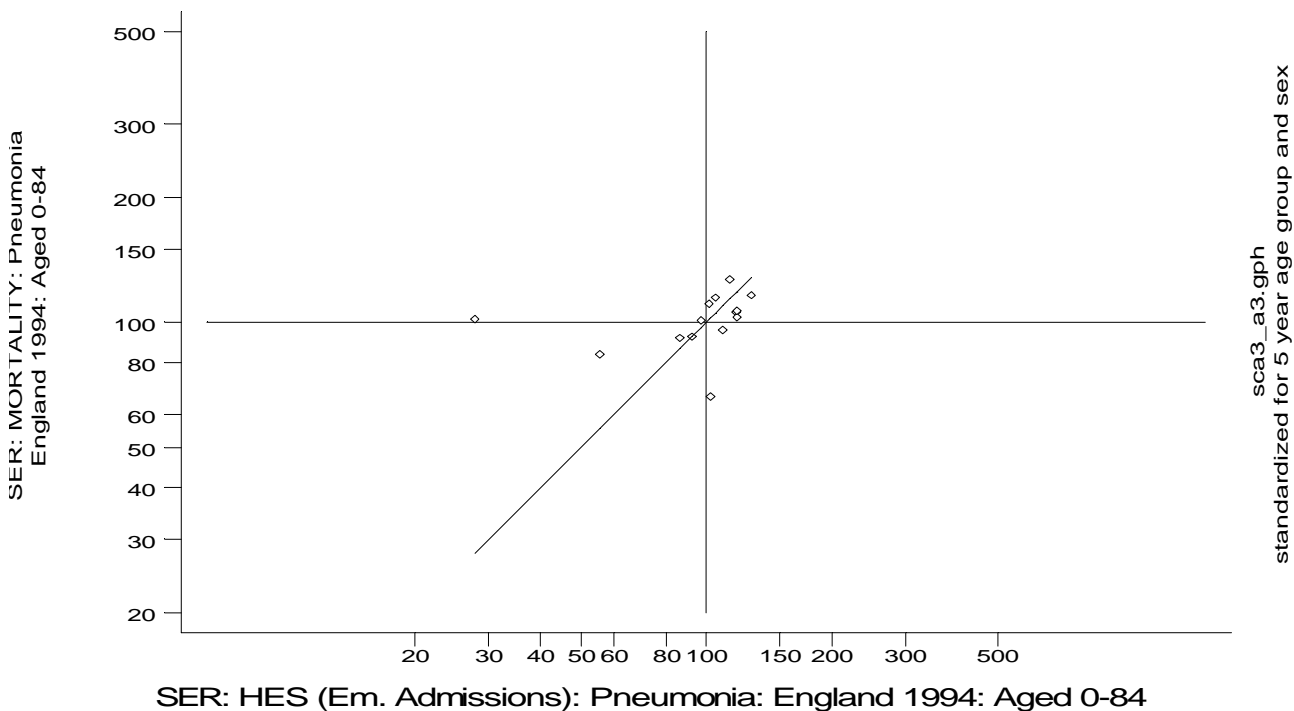
### “ALL AGES vs. ALL AGES”



### A9 Pneumonia standard output graphs

Scatterplots and correlation coefficients (standardised event ratios standardised for age and sex)

- regional comparisons between HSE95, GPRD, HES and Mortality, England 1994, ages 0-84



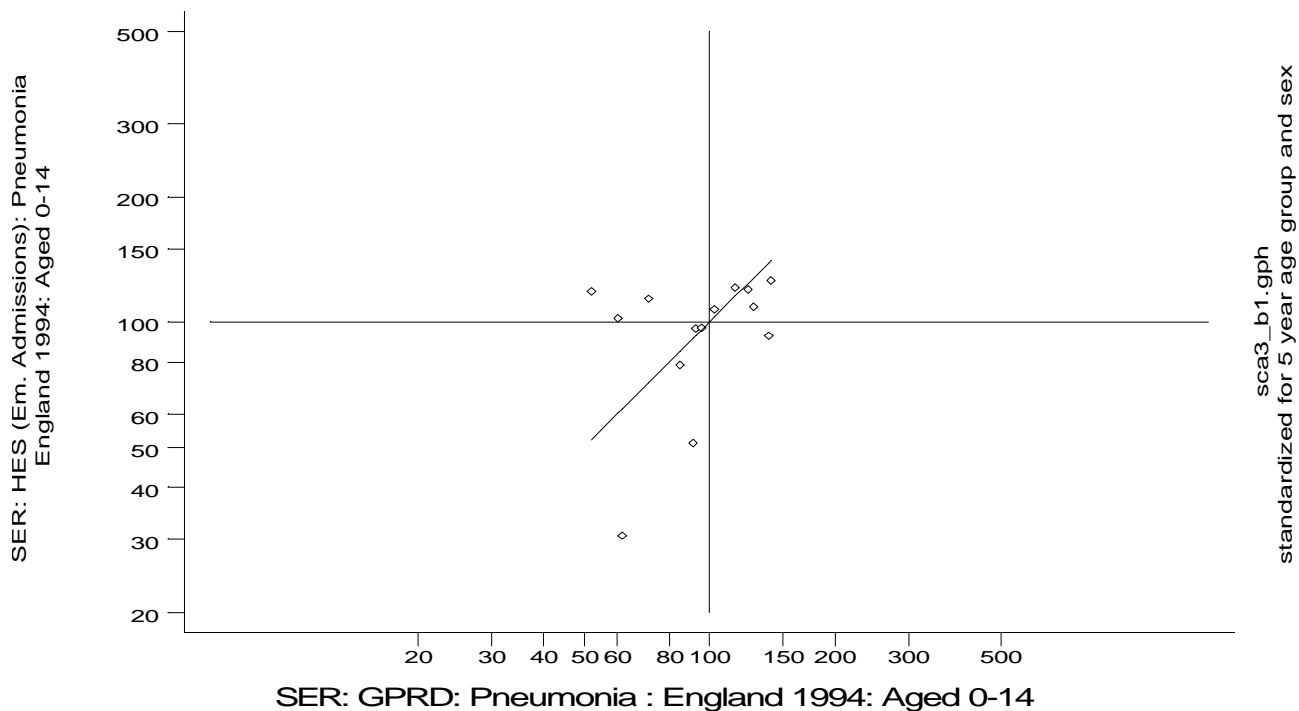
sca3\_a3.gph  
standardized for 5 year age group and sex

**A9 Pneumonia standard output graphs**

Scatterplots and correlation coefficients (standardised event ratios standardised for age and sex)

- regional comparisons between HSE95, GPRD, HES and Mortality, England 1994, ages 0-84

**“CHILDREN vs. CHILDREN”**

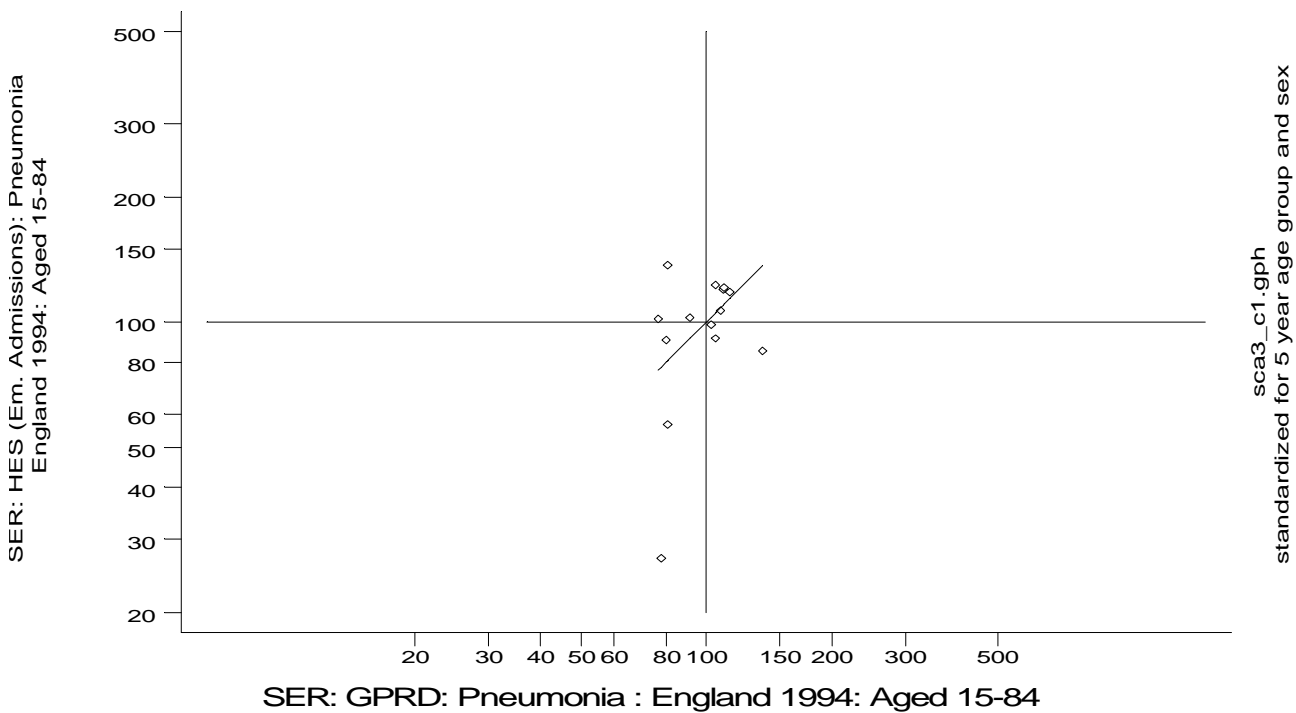


## A9 Pneumonia standard output graphs

Scatterplots and correlation coefficients (standardised event ratios standardised for age and sex)

- regional comparisons between HSE95, GPRD, HES and Mortality, England 1994, ages 0-84

### “ADULTS vs. ADULTS”

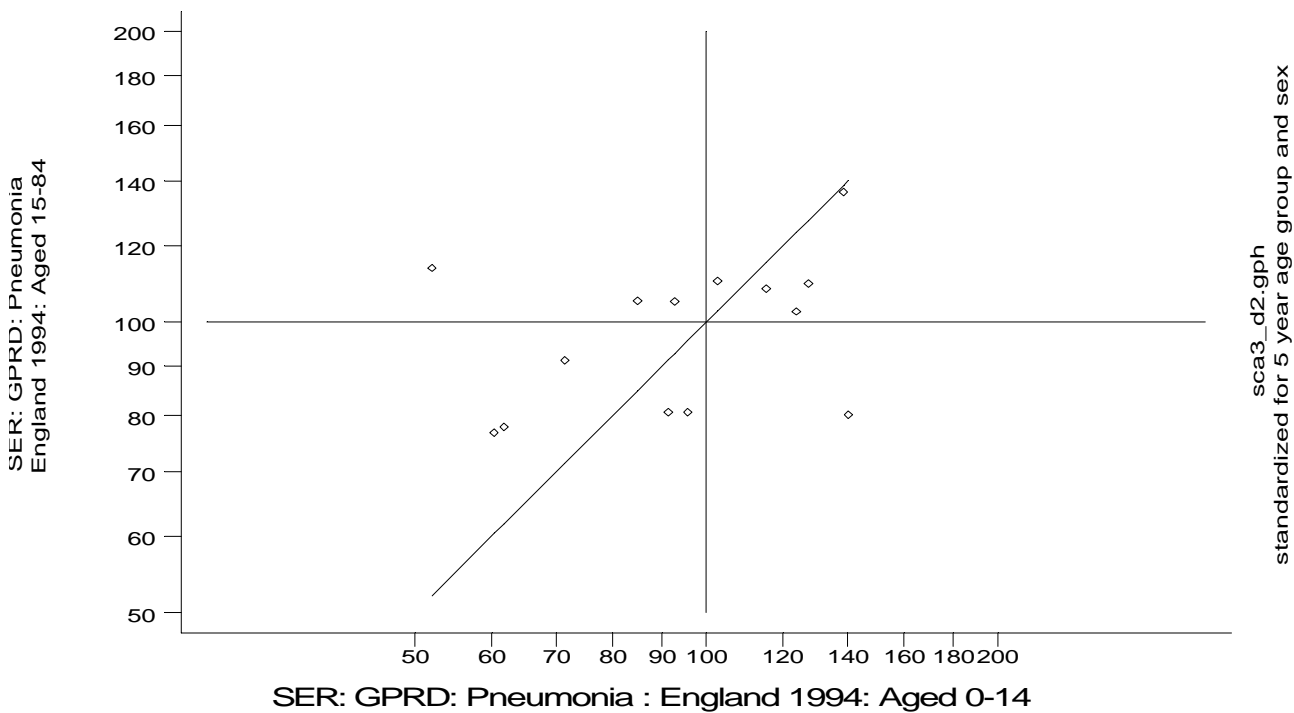
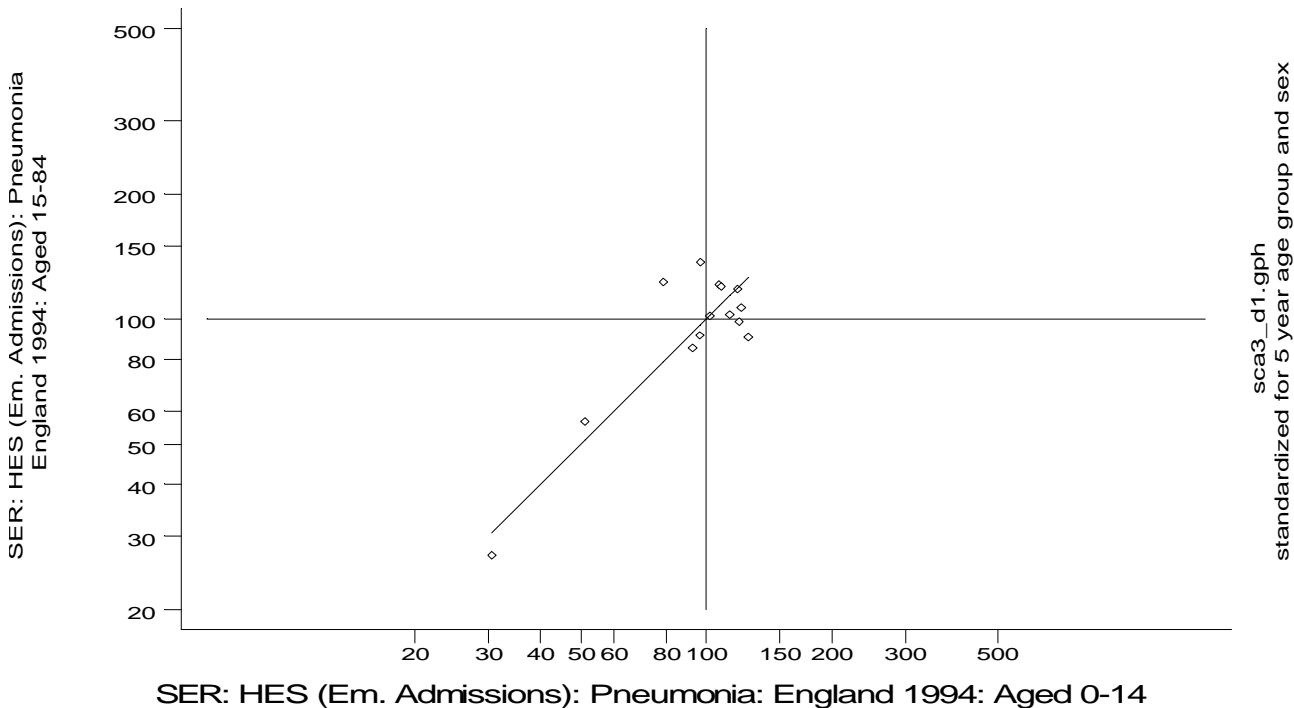


### A9 Pneumonia standard output graphs

Scatterplots and correlation coefficients (standardised event ratios standardised for age and sex)

- regional comparisons between HSE95, GPRD, HES and Mortality, England 1994, ages 0-84

#### “ADULTS vs. CHILDREN”



**A9 Pneumonia standard output graphs**

**Scatterplots and correlation coefficients (standardised event ratios standardised for age and sex)**

- regional comparisons between HSE95, GPRD, HES and Mortality, England 1994, ages 0-84**

Pneumonia: Spearman Rank Correlation Coefficients: *“All Ages vs. All Ages”*

	MORTALITY	HES	GPRD
MORTALITY		0.61	-0.22
HES	0.61		0.35
GPRD	-0.22	0.35	

Pneumonia: Spearman Rank Correlation Coefficients: *“Children vs. Children”*

	MORTALITY	HES	GPRD
MORTALITY			
HES			0.35
GPRD		0.35	

Pneumonia: Spearman Rank Correlation Coefficients: *“Adults vs. Adults”*

	MORTALITY	HES	GPRD
MORTALITY			
HES			0.32
GPRD		0.32	

Pneumonia: Spearman Rank Correlation Coefficients: *“Adults vs. Children”*

	MORTALITY	HES	GPRD
MORTALITY			
HES		0.25	
GPRD			0.27

Pneumonia: Spearman Rank Correlation Coefficients: *Adults and Children*

	HES Aged 0-14	HES Aged 15-84		GPRD Aged 0-14	GPRD Aged 15-84
HES Aged 0-14		0.25		0.35	
HES Aged 15-84	0.25				0.32
GPRD Aged 0-14	0.35				0.27
GPRD Aged 15-84		0.32		0.27	

## A9 Pneumonia standard output graphs

### Scatterplots and correlation coefficients (standardised event ratios standardised for age and sex)

- regional comparisons between HSE95, GPRD, HES and Mortality, England 1994, ages 0-84

ALL AGES vs. ALL AGES

a1: HES (0-84) vs. GPRD (0-84)  
Number of obs = 14  
Spearman's rho = 0.3538  
Test of Ho: hsl\_3 and gsa1\_3 independent  
Pr > |t| = 0.2145

a2: MORTALITY (0-84) vs. GPRD (0-84)  
Number of obs = 14  
Spearman's rho = -0.2176  
Test of Ho: msl\_3 and gsa1\_3 independent  
Pr > |t| = 0.4549

a3: MORTALITY (0-84) vs. HES (0-84)  
Number of obs = 14  
Spearman's rho = 0.6132  
Test of Ho: msl\_3 and hsl\_3 independent  
Pr > |t| = 0.0197

CHILDREN vs. CHILDREN

b1: HES (0-14) vs. GPRD (0-14)  
Number of obs = 14  
Spearman's rho = 0.3538  
Test of Ho: hs3\_3 and gsa3\_3 independent  
Pr > |t| = 0.2145

ADULTS vs. ADULTS

c1: HES (15-84) vs. GPRD (15-84)  
Number of obs = 14  
Spearman's rho = 0.3231  
Test of Ho: hs5\_3 and gsa5\_3 independent  
Pr > |t| = 0.2599

ADULTS vs. CHILDREN

d1: HES (15-84) vs. HES (0-14)  
Number of obs = 14  
Spearman's rho = 0.2484  
Test of Ho: hs5\_3 and hs3\_3 independent  
Pr > |t| = 0.3919

d2: GPRD (15-84) vs. GPRD (0-14)  
Number of obs = 14  
Spearman's rho = 0.2703  
Test of Ho: gsa5\_3 and gsa3\_3 independent  
Pr > |t| = 0.3499

## A9 Pneumonia standard output graphs

### Scatterplots and correlation coefficients (standardised event ratios standardised for age and sex)

- regional comparisons between HSE95, GPRD, HES and Mortality, England 1994, ages 0-84

ALL AGES

Observed Number of Pneumonia Events,  
England 1994: Aged 0-84

rha	goal_3	ho1_3	mo1_3
Northern	280	3074	1334
Yorkshir	146	3923	1793
Trent	327	4730	2117
E Anglia	218	1347	1059
NW Thame	231	3252	1445
NE Thame	66	3499	1879
SE Thame	71	3510	2030
SW Thame	261	2674	1492
Wessex	274	2583	1488
Oxford	76	601	1035
S Wester	273	3337	1202
W Midlan	558	4362	2170
Mersey	221	2442	1367
N Wester	258	4450	2025

Denominator for Pneumonia Events,  
England 1994: Aged 0-84

rha	gdal_3	hdl_3	mdl_3
Northern	104729.2	2881981	2881981
Yorkshir	52152.7	3654624	3654624
Trent	120996.0	4701828	4701828
E Anglia	113740.5	2600991	2600991
NW Thame	116975.6	2953265	2953265
NE Thame	31761.7	3766006	3766006
SE Thame	33977.9	3654042	3654042
SW Thame	117694.8	2950819	2950819
Wessex	73779.6	3110430	3110430
Oxford	45680.5	2574069	2574069
S Wester	96438.4	3277999	3277999
W Midlan	229739.0	5213324	5213324
Mersey	87252.9	2369834	2369834
N Wester	102013.9	4133922	4133922

Crude Rate of Pneumonia Events,  
England 1994: Aged 0-84

rha	gral_3	hr1_3	mr1_3
Northern	2.7	1066.6	462.9
Yorkshir	2.8	1073.4	490.6
Trent	2.7	1006.0	450.3
E Anglia	1.9	517.9	407.2
NW Thame	2.0	1101.2	489.3
NE Thame	2.1	929.1	498.9
SE Thame	2.1	960.6	555.5
SW Thame	2.2	906.2	505.6
Wessex	3.7	830.4	478.4
Oxford	1.7	233.5	402.1
S Wester	2.8	1018.0	366.7
W Midlan	2.4	836.7	416.2
Mersey	2.5	1030.5	576.8
N Wester	2.5	1076.5	489.8

Expected Number of Pneumonia Events,  
England 1994: Aged 0-84

rha	geal_3	he1_3	me1_3
Northern	260.5	2600.0	1296.7
Yorkshir	130.9	3332.0	1696.4
Trent	299.9	4321.1	2205.1
E Anglia	266.1	2428.6	1265.6
NW Thame	281.0	2533.2	1241.8
NE Thame	74.1	3331.4	1637.8
SE Thame	94.2	3451.2	1834.6
SW Thame	303.1	2755.5	1477.9
Wessex	200.7	2986.9	1621.0
Oxford	100.3	2161.7	1015.8
S Wester	261.1	3256.8	1815.0
W Midlan	538.1	4718.8	2349.9
Mersey	214.2	2143.3	1077.4
N Wester	235.9	3763.4	1900.9

SER's for Pneumonia Events, standardized for age5 and sex  
England 1994: Aged 0-84

rha	gsal_3	hs1_3	ms1_3
Northern	107.5	118.2	102.9
Yorkshir	111.6	117.7	105.7
Trent	109.0	109.5	96.0
E Anglia	81.9	55.5	83.7
NW Thame	82.2	128.4	116.4
NE Thame	89.1	105.0	114.7
SE Thame	75.4	101.7	110.6
SW Thame	86.1	97.0	101.0
Wessex	136.6	86.5	91.8
Oxford	75.8	27.8	101.9
S Wester	104.5	102.5	66.2
W Midlan	103.7	92.4	92.3
Mersey	103.2	113.9	126.9
N Wester	109.4	118.2	106.5

## A9 Pneumonia standard output graphs

### Scatterplots and correlation coefficients (standardised event ratios standardised for age and sex)

- regional comparisons between HSE95, GPRD, HES and Mortality, England 1994, ages 0-84

#### CHILDREN

##### Observed Number of Pneumonia Events,

England 1994: Aged 0-14	rha	goa3_3	ho3_3
Northern	14		624
Yorkshir	18		747
Trent	37		1042
E Anglia	28		244
NW Thame	28		531
NE Thame	6		844
SE Thame	5		699
SW Thame	42		659
Wessex	28		511
Oxford	8		152
S Wester	30		679
W Midlan	56		956
Mersey	19		351
N Wester	29		861

##### Denominator for Pneumonia Events,

England 1994: Aged 0-14	rha	gda3_3	hd3_3
Northern	19829.7		570908
Yorkshir	10143.6		733525
Trent	23151.9		913684
E Anglia	22351.5		508943
NW Thame	20890.7		560528
NE Thame	5847.6		761450
SE Thame	6180.3		711325
SW Thame	21599.9		544194
Wessex	14383.1		591126
Oxford	9285.1		525797
S Wester	17609.1		612545
W Midlan	43876.9		1054987
Mersey	16517.7		480444
N Wester	20678.2		851296

##### Crude Rate of Pneumonia Events,

England 1994: Aged 0-14	rha	gra3_3	hr3_3
Northern	0.7		1093.0
Yorkshir	1.8		1018.4
Trent	1.6		1140.4
E Anglia	1.3		479.4
NW Thame	1.3		947.3
NE Thame	1.0		1108.4
SE Thame	0.8		982.7
SW Thame	1.9		1211.0
Wessex	1.9		864.5
Oxford	0.9		289.1
S Wester	1.7		1108.5
W Midlan	1.3		906.2
Mersey	1.2		730.6
N Wester	1.4		1011.4

##### Expected Number of Pneumonia Events,

England 1994: Aged 0-14	rha	gea3_3	he3_3
Northern	26.9		525.8
Yorkshir	14.1		687.5
Trent	32.1		859.9
E Anglia	30.6		477.2
NW Thame	29.3		547.6
NE Thame	8.4		742.4
SE Thame	8.3		684.7
SW Thame	30.0		523.3
Wessex	20.2		551.3
Oxford	12.9		496.2
S Wester	24.2		566.2
W Midlan	60.4		990.6
Mersey	22.4		444.9
N Wester	28.2		802.3

##### SER's for Pneumonia Events, standardized for age5 and sex

England 1994: Aged 0-14	rha	gsa3_3	hs3_3
Northern	52.1		118.7
Yorkshir	127.4		108.7
Trent	115.3		121.2
E Anglia	91.4		51.1
NW Thame	95.7		97.0
NE Thame	71.4		113.7
SE Thame	60.4		102.1
SW Thame	140.2		125.9
Wessex	138.5		92.7
Oxford	61.8		30.6
S Wester	123.9		119.9
W Midlan	92.8		96.5
Mersey	84.9		78.9
N Wester	102.7		107.3

**A9 Pneumonia standard output graphs****Scatterplots and correlation coefficients (standardised event ratios standardised for age and sex)**

- regional comparisons between HSE95, GPRD, HES and Mortality, England 1994, ages 0-84

## ADULTS

Observed Number of Pneumonia Events,  
England 1994: Aged 15-84

	rha	goa5_3	ho5_3
Northern	266		2450
Yorkshir	128		3176
Trent	290		3688
E Anglia	190		1103
NW Thame	203		2721
NE Thame	60		2655
SE Thame	66		2811
SW Thame	219		2015
Wessex	246		2072
Oxford	68		449
S Wester	243		2658
W Midlan	502		3406
Mersey	202		2091
N Wester	229		3589

Denominator for Pneumonia Events,  
England 1994: Aged 15-84

	rha	gda5_3	hd5_3
Northern	84899.5		2311073
Yorkshir	42009.1		2921099
Trent	97844.1		3788144
E Anglia	91388.9		2092048
NW Thame	96084.8		2392737
NE Thame	25914.1		3004556
SE Thame	27797.6		2942717
SW Thame	96094.8		2406625
Wessex	59396.5		2519304
Oxford	36395.4		2048272
S Wester	78829.3		2665454
W Midlan	185862.1		4158337
Mersey	70735.2		1889390
N Wester	81335.8		3282626

Crude Rate of Pneumonia Events,  
England 1994: Aged 15-84

	rha	gra5_3	hr5_3
Northern	3.1		1060.1
Yorkshir	3.0		1087.3
Trent	3.0		973.6
E Anglia	2.1		527.2
NW Thame	2.1		1137.2
NE Thame	2.3		883.7
SE Thame	2.4		955.2
SW Thame	2.3		837.3
Wessex	4.1		822.4
Oxford	1.9		219.2
S Wester	3.1		997.2
W Midlan	2.7		819.1
Mersey	2.9		1106.7
N Wester	2.8		1093.3

Expected Number of Pneumonia Events,  
England 1994: Aged 15-84

	rha	gea5_3	he5_3
Northern	233.6		2074.3
Yorkshir	116.7		2644.6
Trent	267.8		3461.2
E Anglia	235.4		1951.4
NW Thame	251.7		1985.6
NE Thame	65.7		2589.0
SE Thame	85.9		2766.6
SW Thame	273.2		2232.2
Wessex	180.4		2435.6
Oxford	87.3		1665.5
S Wester	236.9		2690.6
W Midlan	477.7		3728.2
Mersey	191.8		1698.4
N Wester	207.7		2961.1

SER's for Pneumonia, standardized for age5 and sex  
England 1994: Aged 15-84

	rha	gsa5_3	hs5_3
Northern	113.9		118.1
Yorkshir	109.7		120.1
Trent	108.3		106.6
E Anglia	80.7		56.5
NW Thame	80.6		137.0
NE Thame	91.3		102.6
SE Thame	76.8		101.6
SW Thame	80.2		90.3
Wessex	136.3		85.1
Oxford	77.9		27.0
S Wester	102.6		98.8
W Midlan	105.1		91.4
Mersey	105.3		123.1
N Wester	110.3		121.2