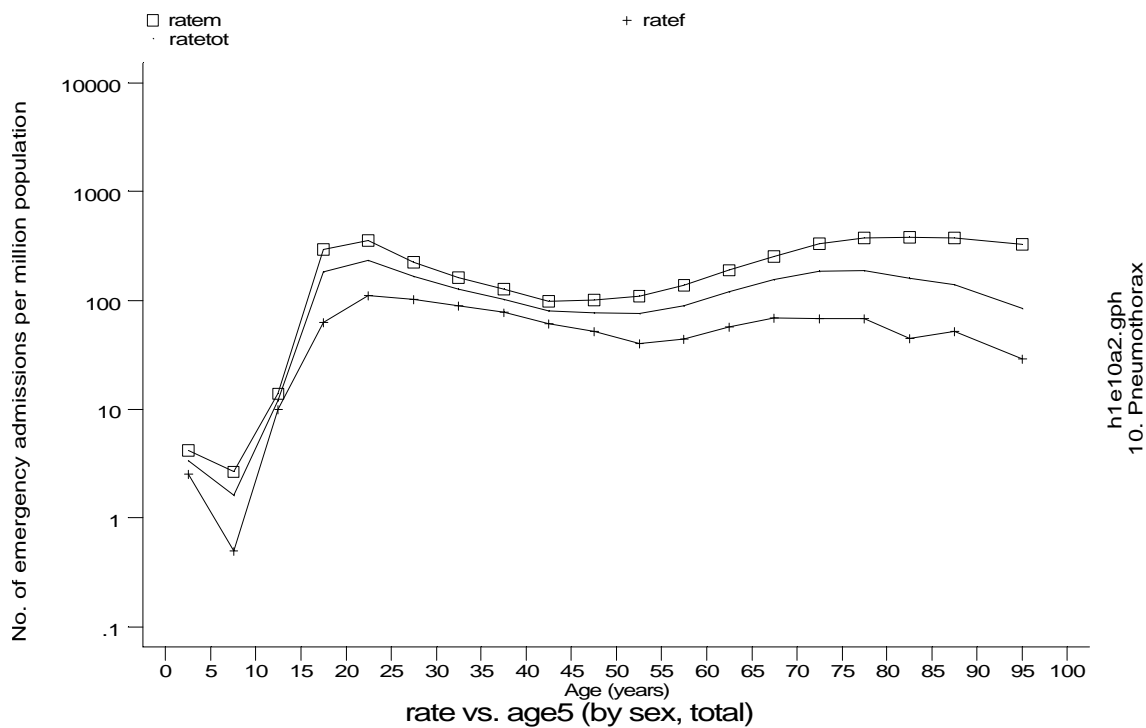
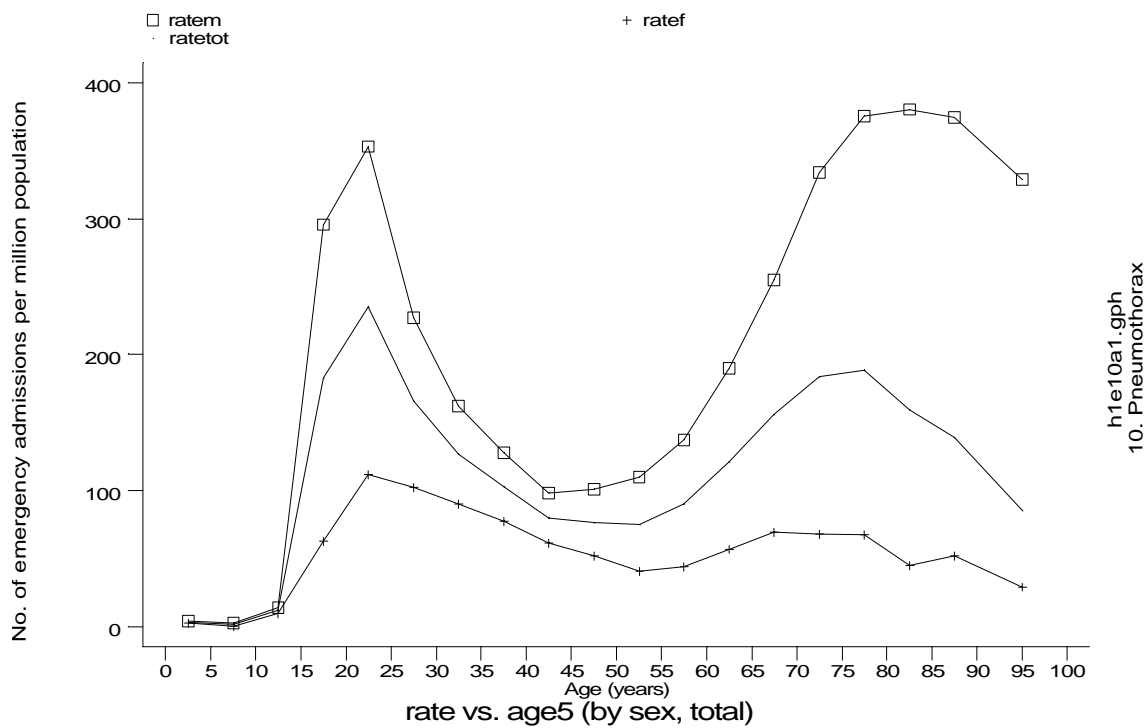


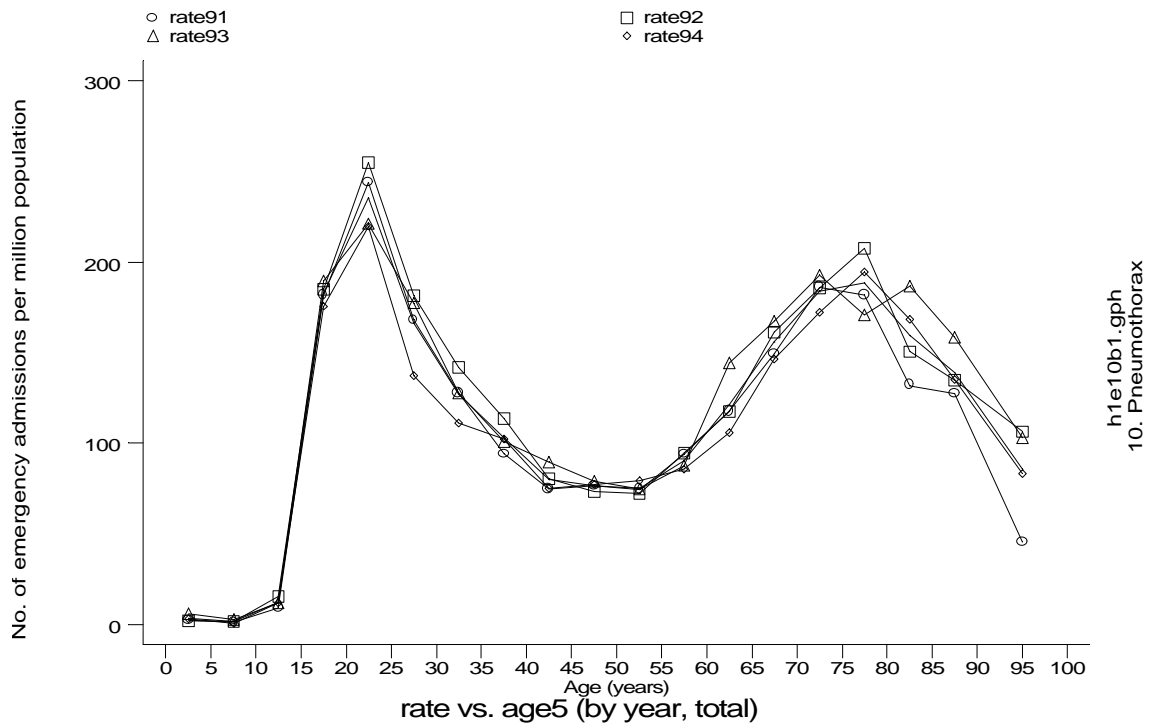
Age-sex distributions, yearly trends and cohort analysis (crude rates)

- HES Emergency admissions, England 1991-94



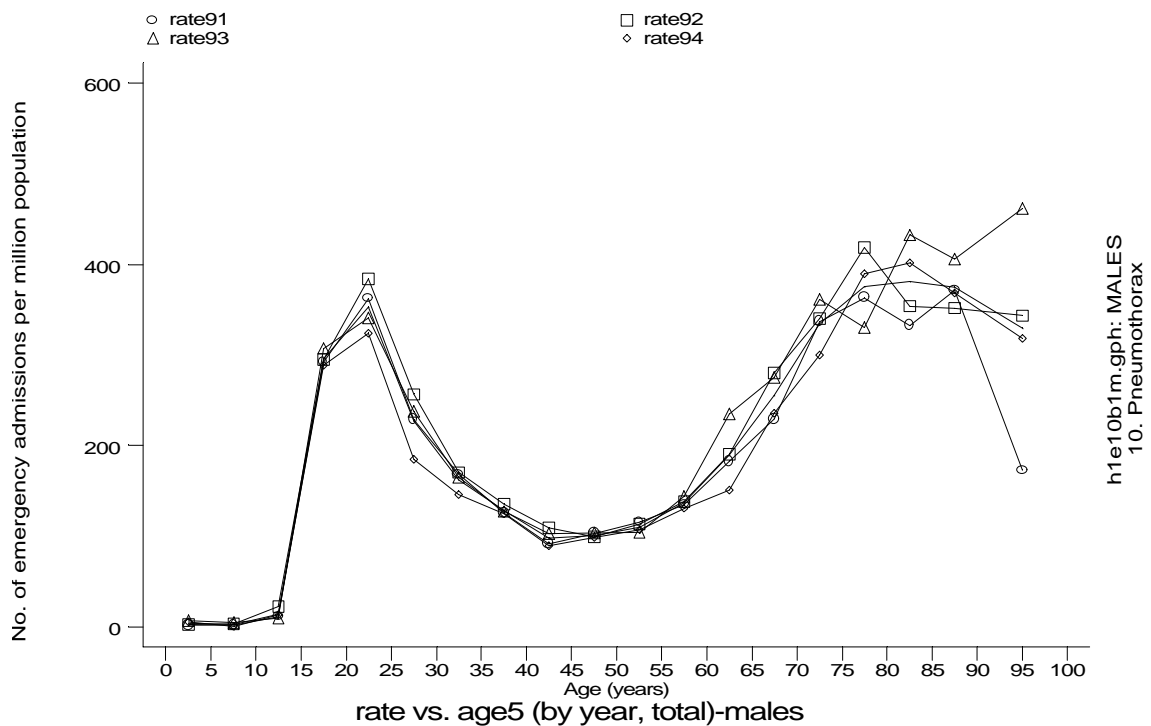
Age-sex distributions, yearly trends and cohort analysis (crude rates)

- HES Emergency admissions, England 1991-94

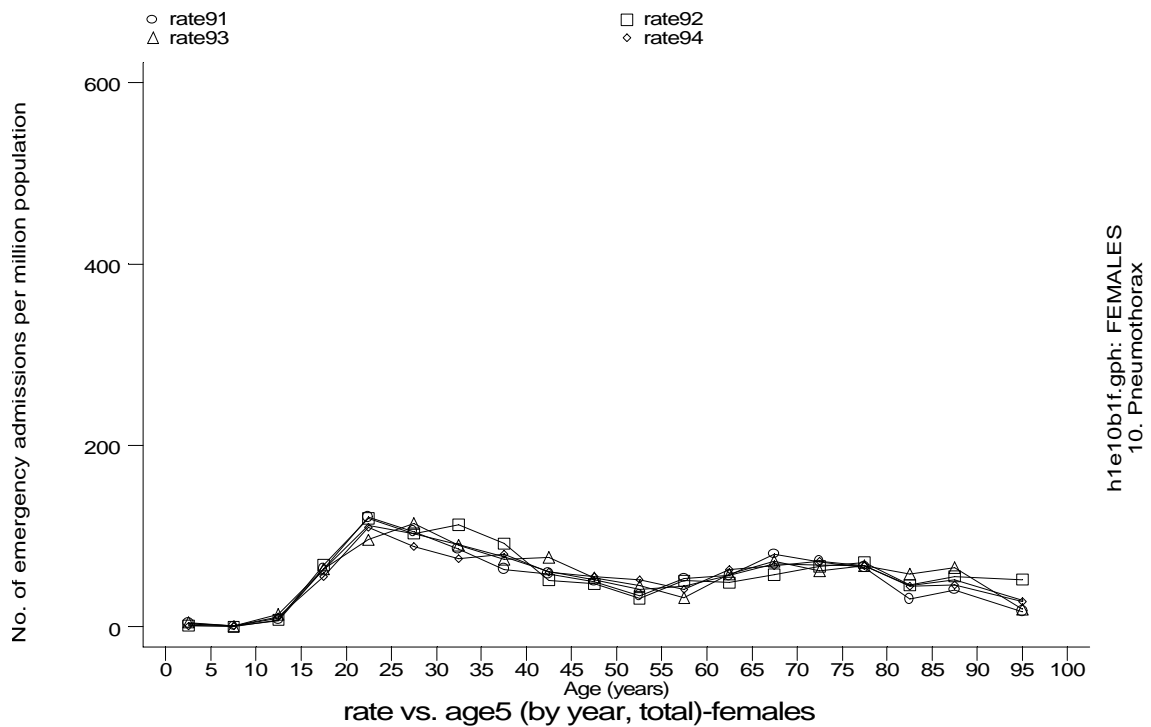


Age-sex distributions, yearly trends and cohort analysis (crude rates)

- HES Emergency admissions, England 1991-94



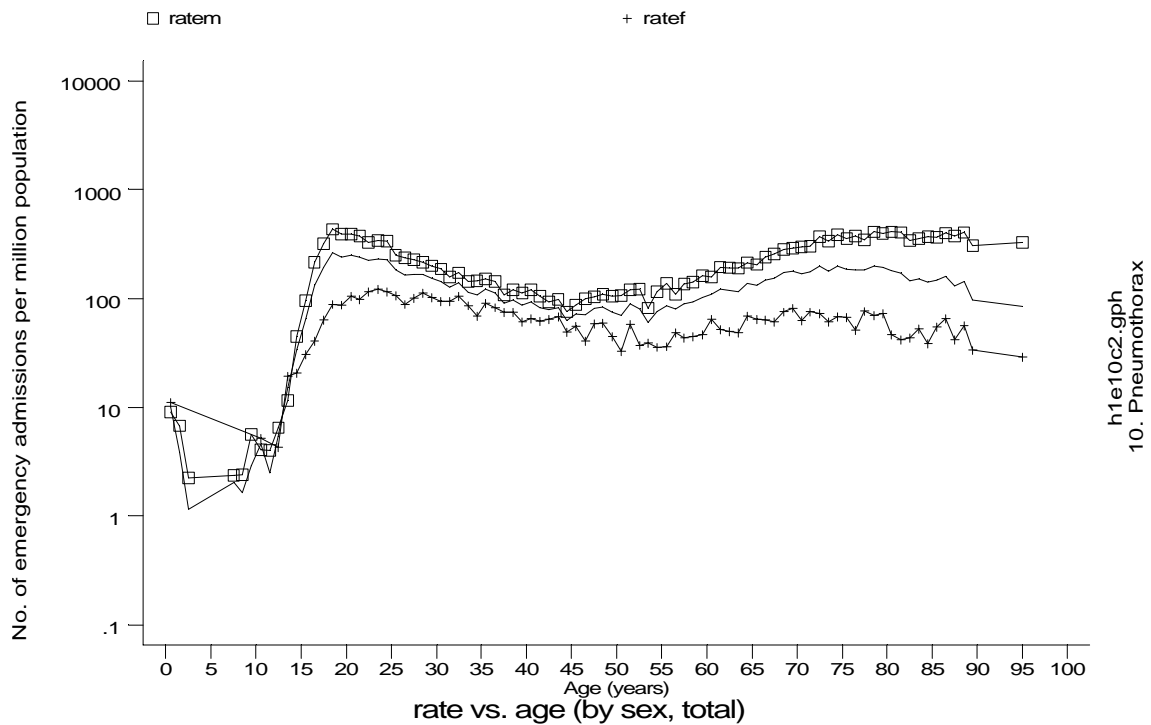
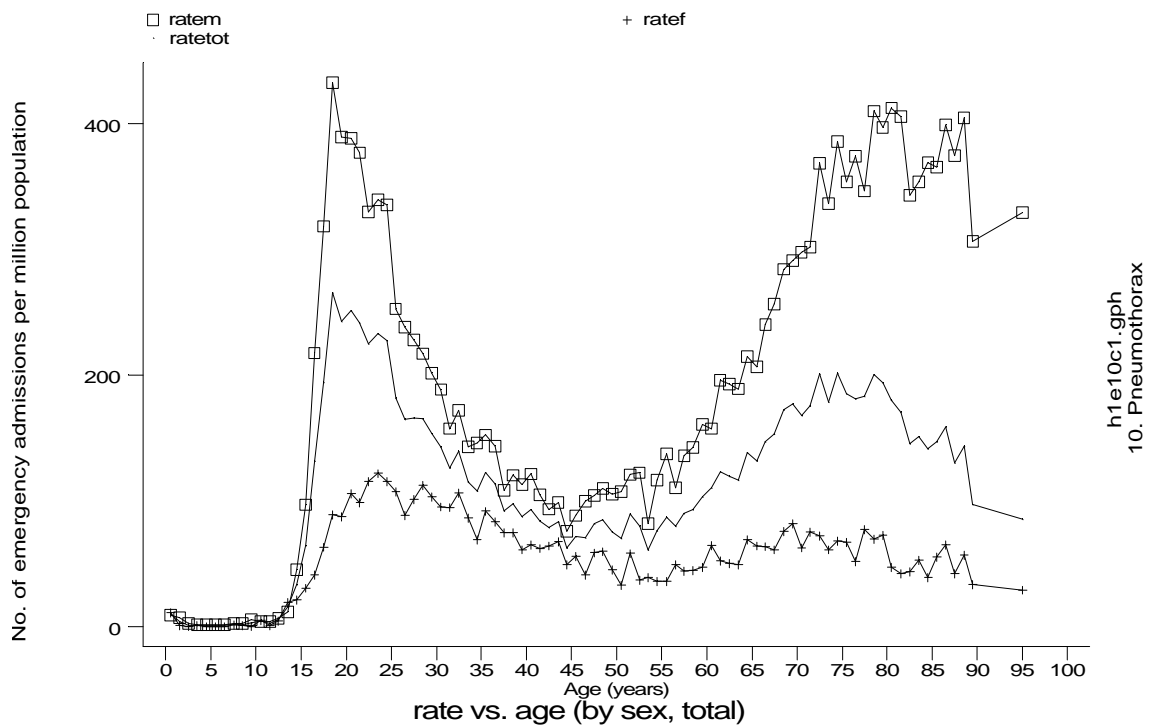
h1e10b1m.gph: MALES
10. Pneumothorax



h1e10b1f.gph: FEMALES
10. Pneumothorax

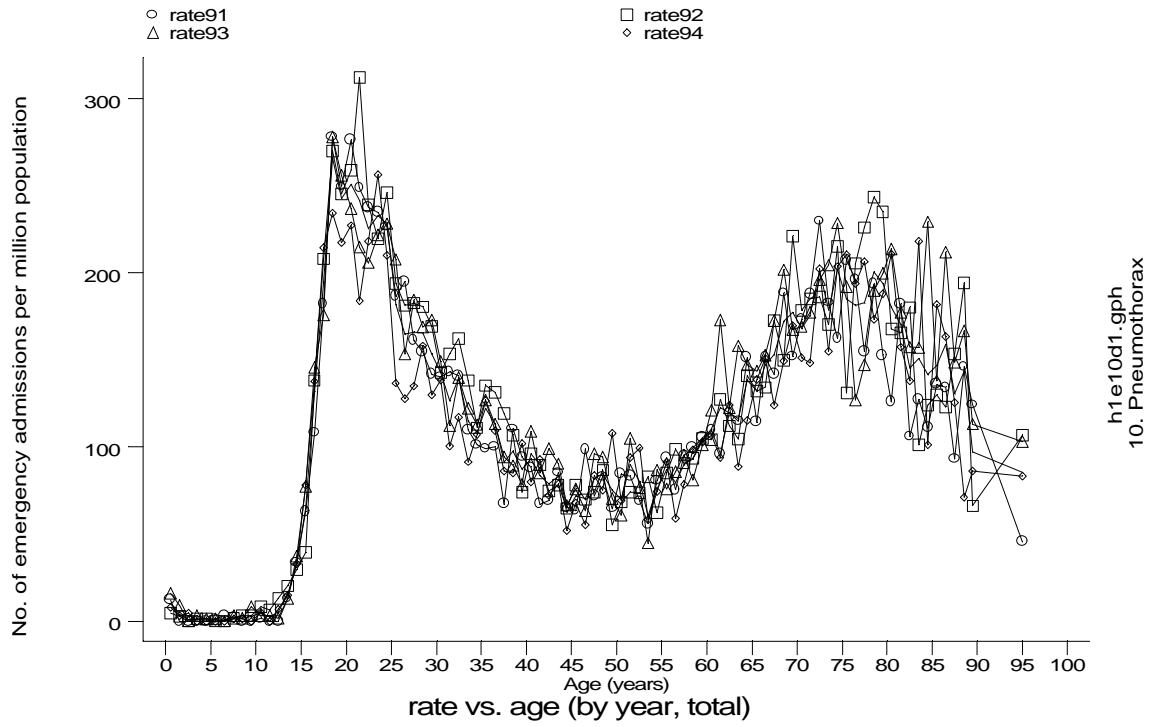
Age-sex distributions, yearly trends and cohort analysis (crude rates)

- HES Emergency admissions, England 1991-94



Age-sex distributions, yearly trends and cohort analysis (crude rates)

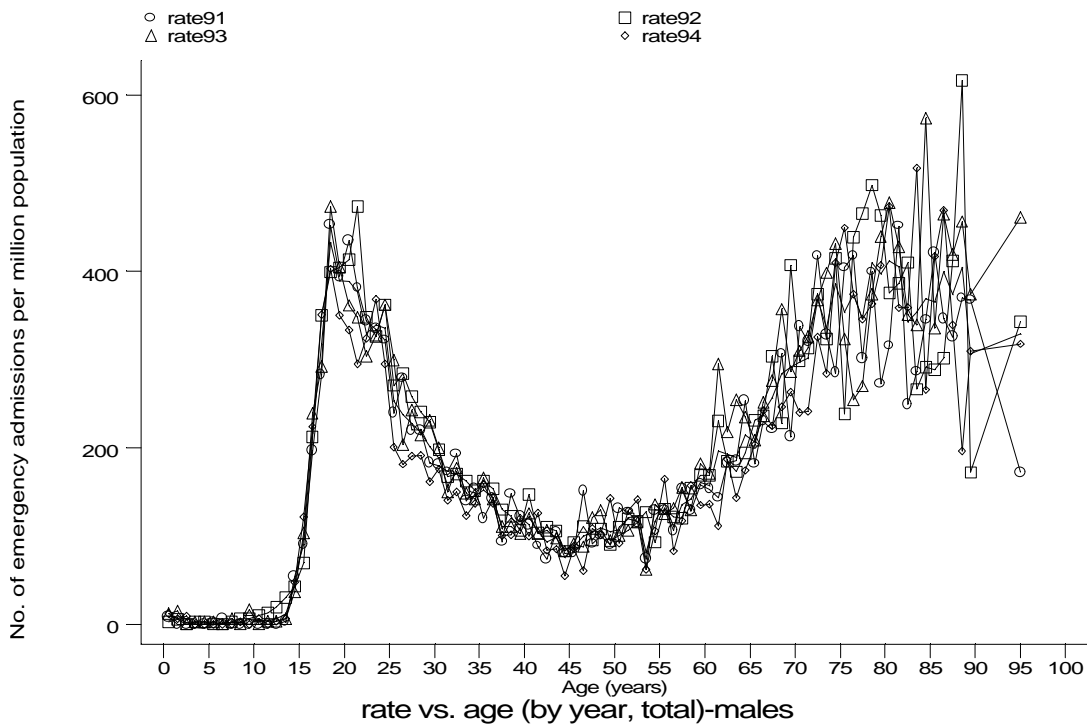
- HES Emergency admissions, England 1991-94



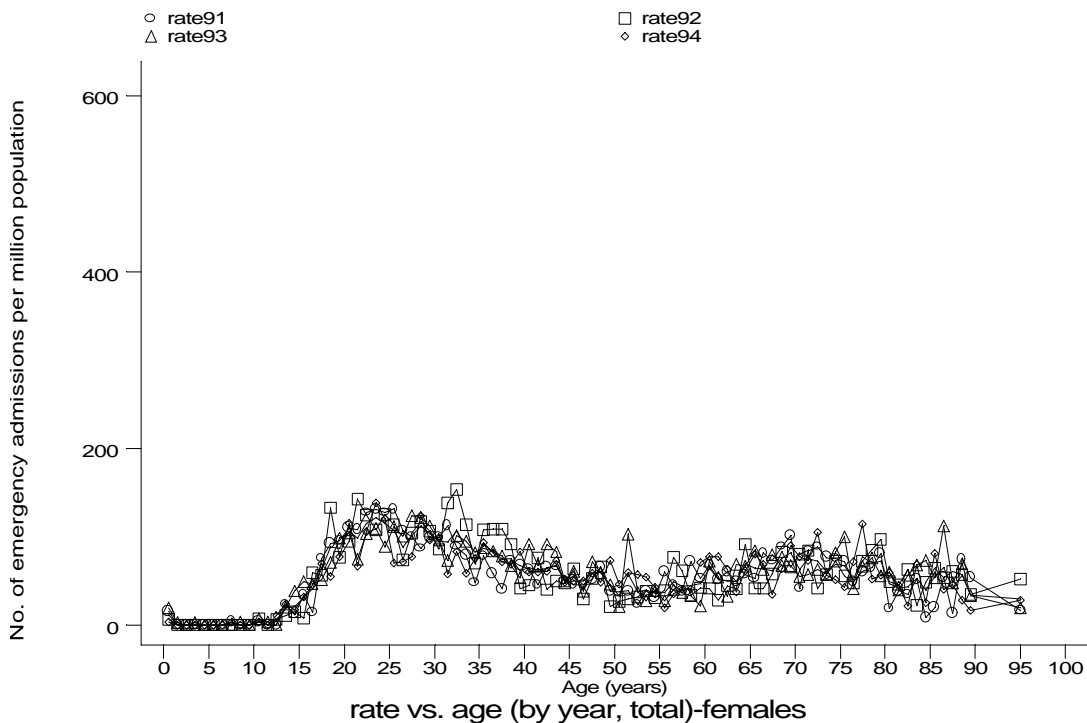
h1e10d1.gph
10. Pneumothorax

Age-sex distributions, yearly trends and cohort analysis (crude rates)

- HES Emergency admissions, England 1991-94



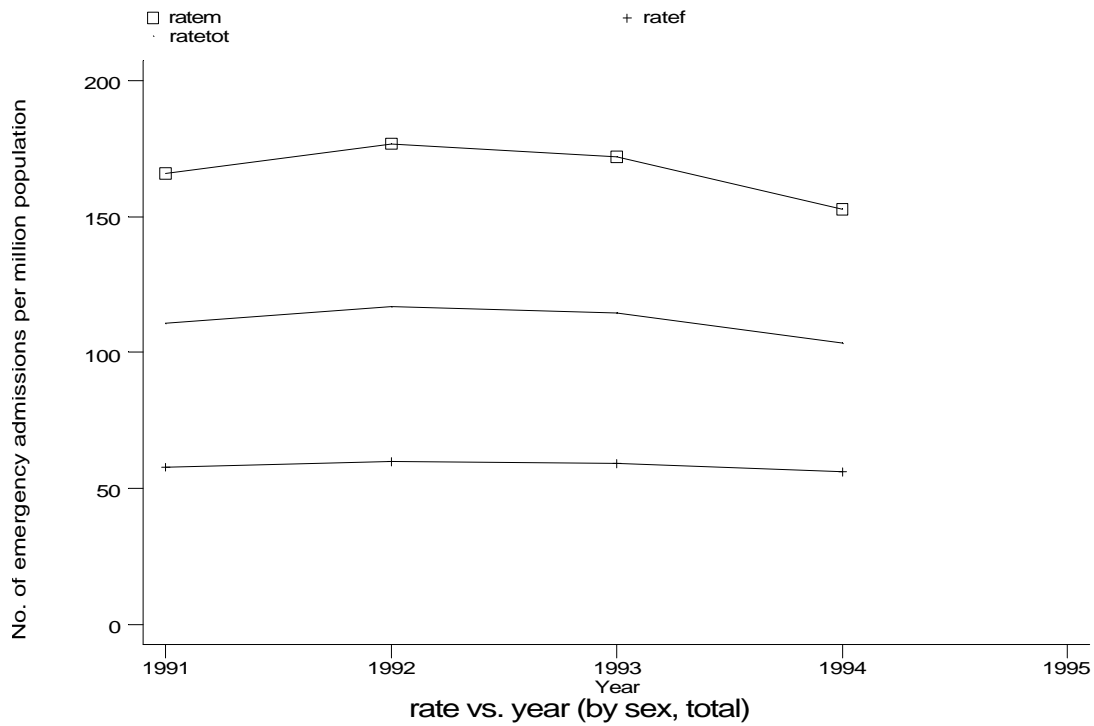
h1e10d1m.gph: MALES
10. Pneumothorax



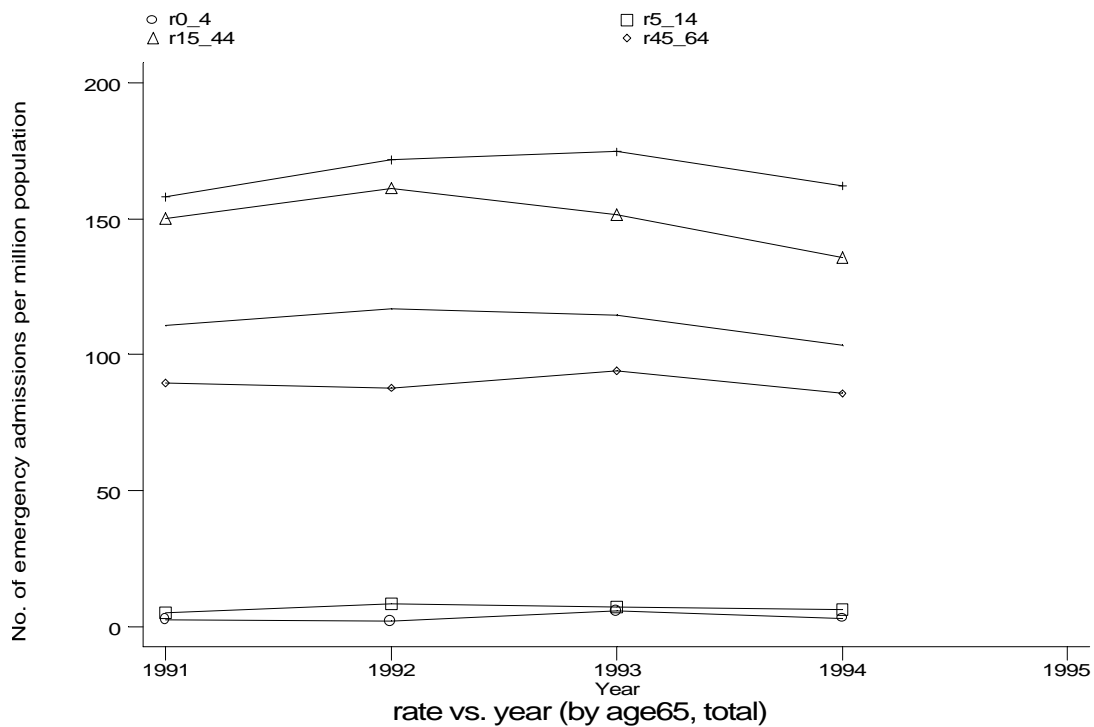
h1e10d1f.gph: FEMALES
10. Pneumothorax

Age-sex distributions, yearly trends and cohort analysis (crude rates)

- HES Emergency admissions, England 1991-94



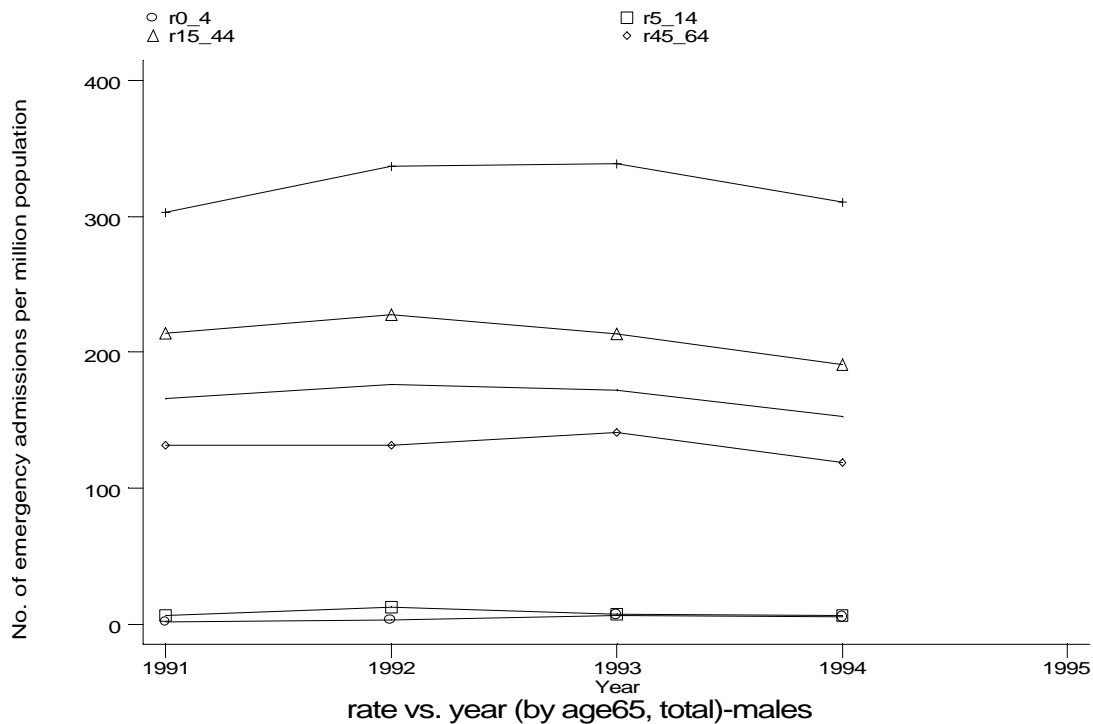
h1e10e.gph
10. Pneumothorax



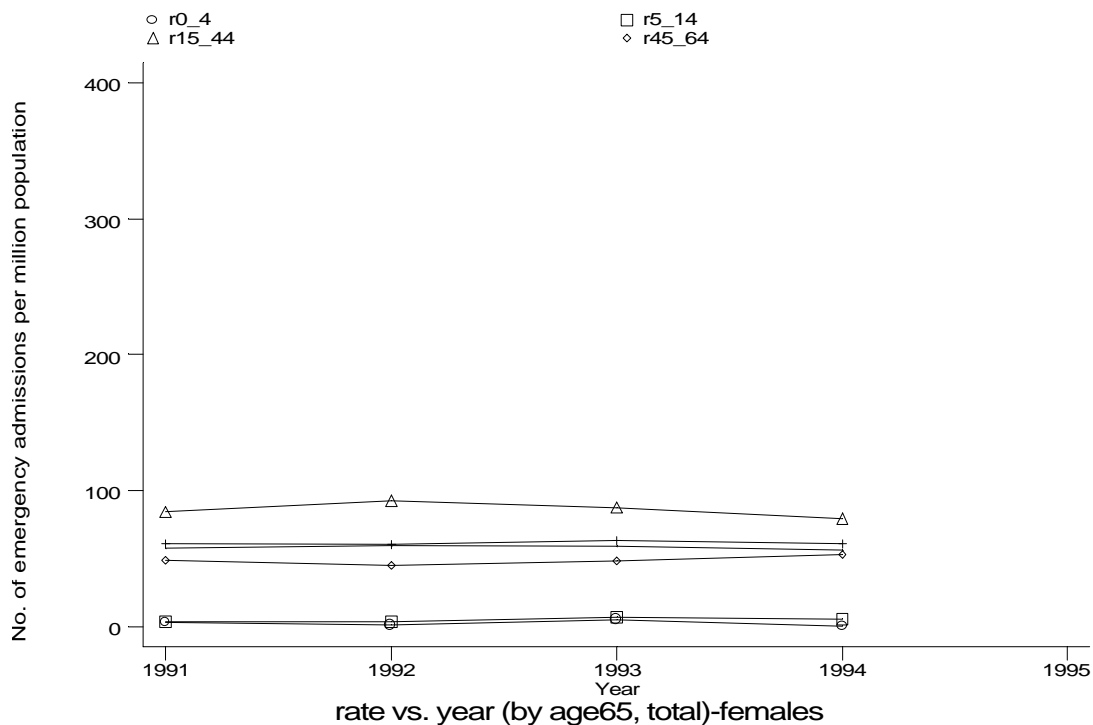
h1e10f.gph
10. Pneumothorax

Age-sex distributions, yearly trends and cohort analysis (crude rates)

- HES Emergency admissions, England 1991-94



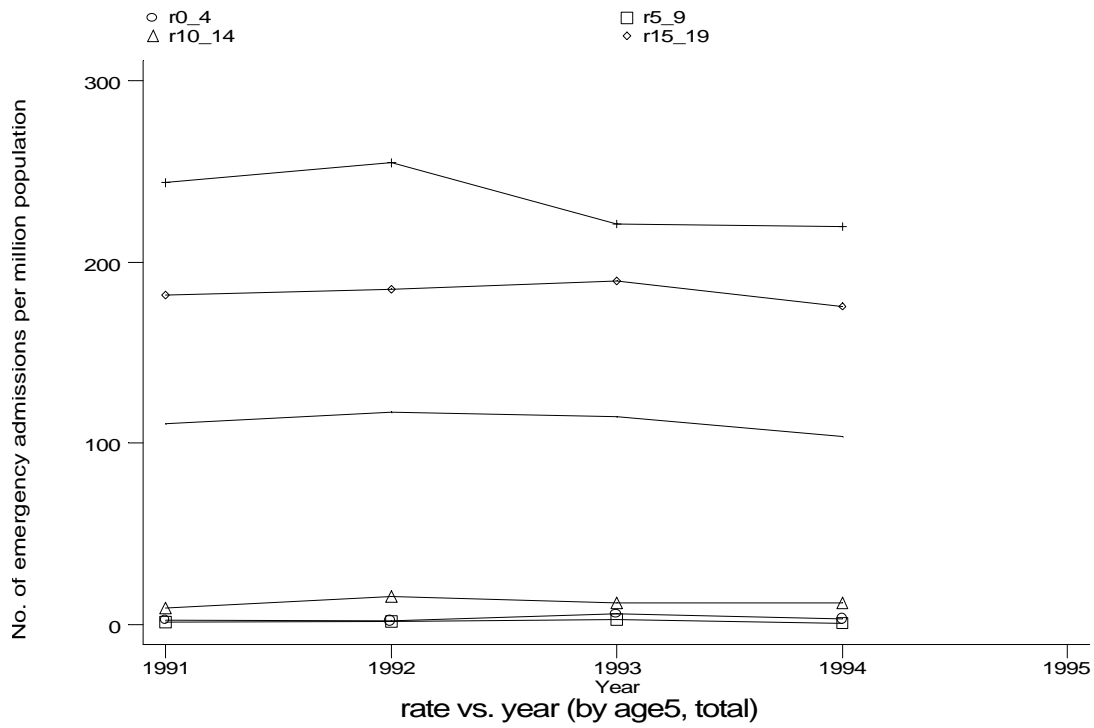
h1e10fm.gph: MALES
10. Pneumothorax



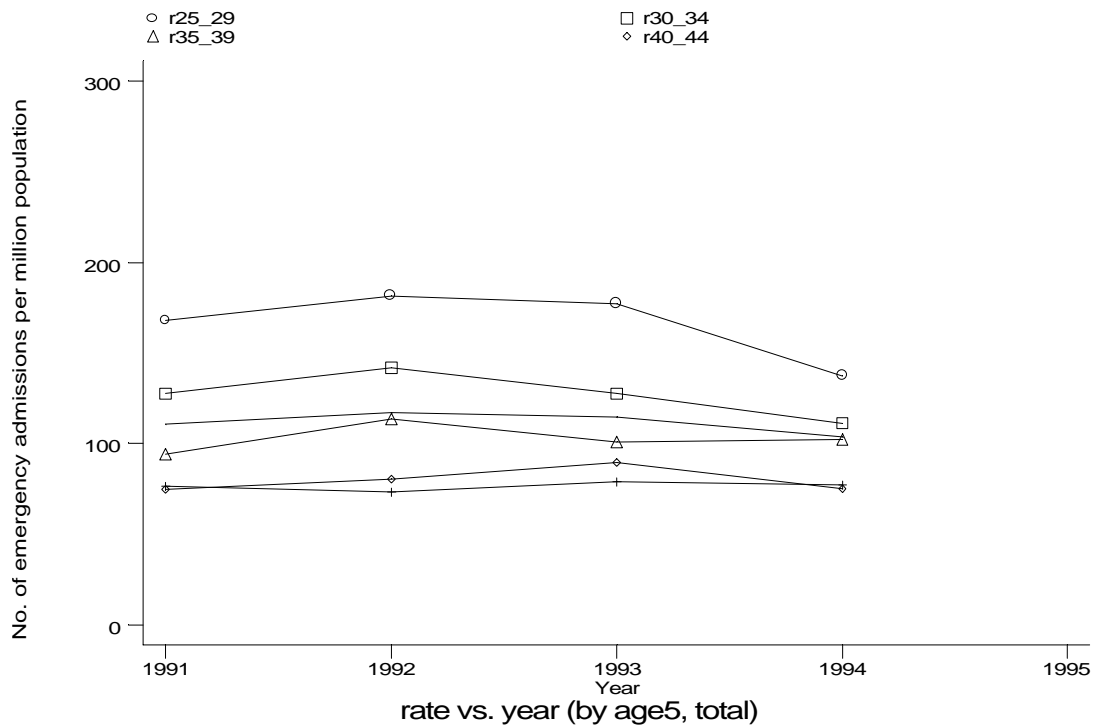
h1e10ff.gph: FEMALES
10. Pneumothorax

Age-sex distributions, yearly trends and cohort analysis (crude rates)

- HES Emergency admissions, England 1991-94



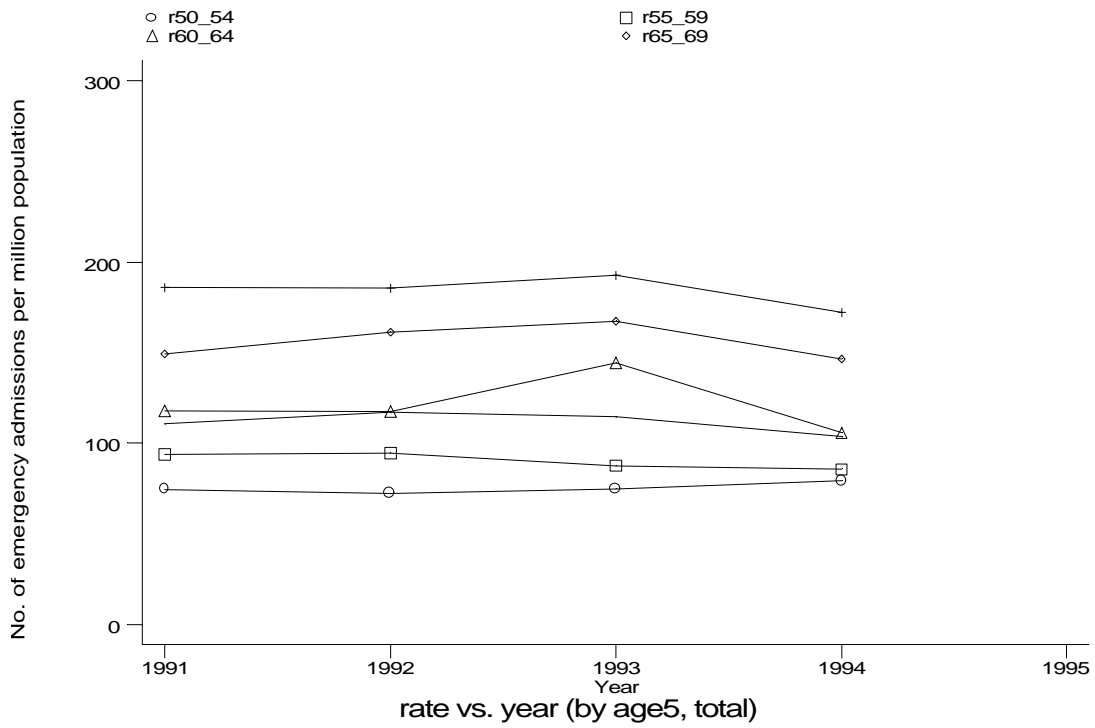
h1e10g1.gph
10. Pneumothorax



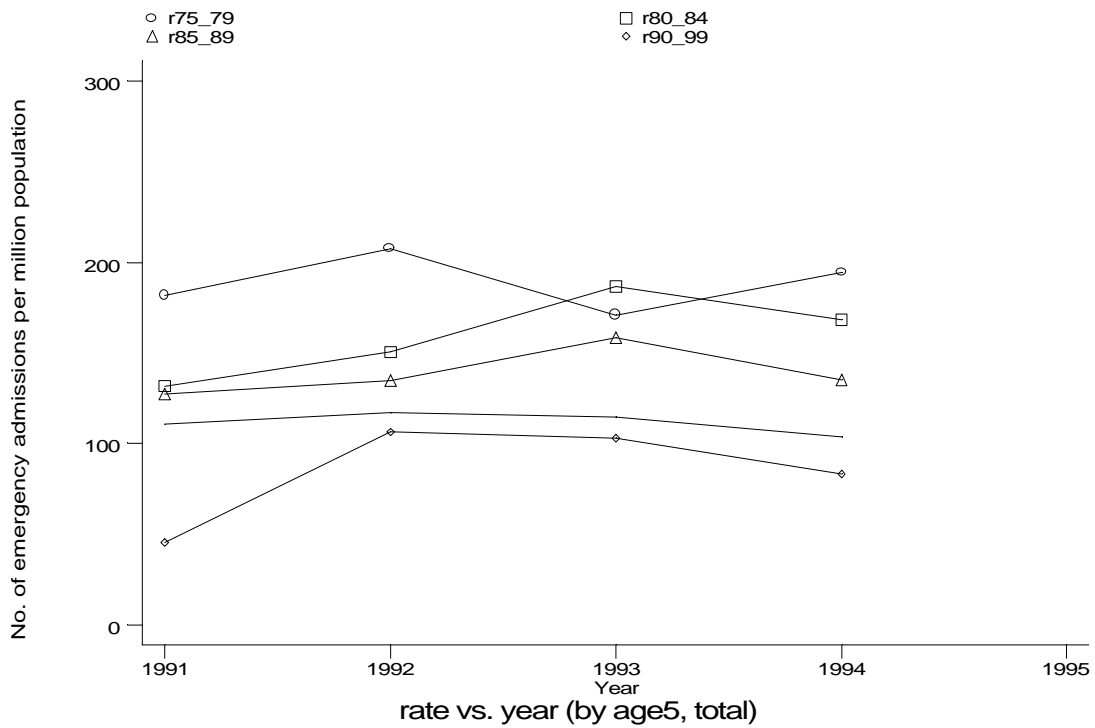
h1e10g2.gph
10. Pneumothorax

Age-sex distributions, yearly trends and cohort analysis (crude rates)

- HES Emergency admissions, England 1991-94



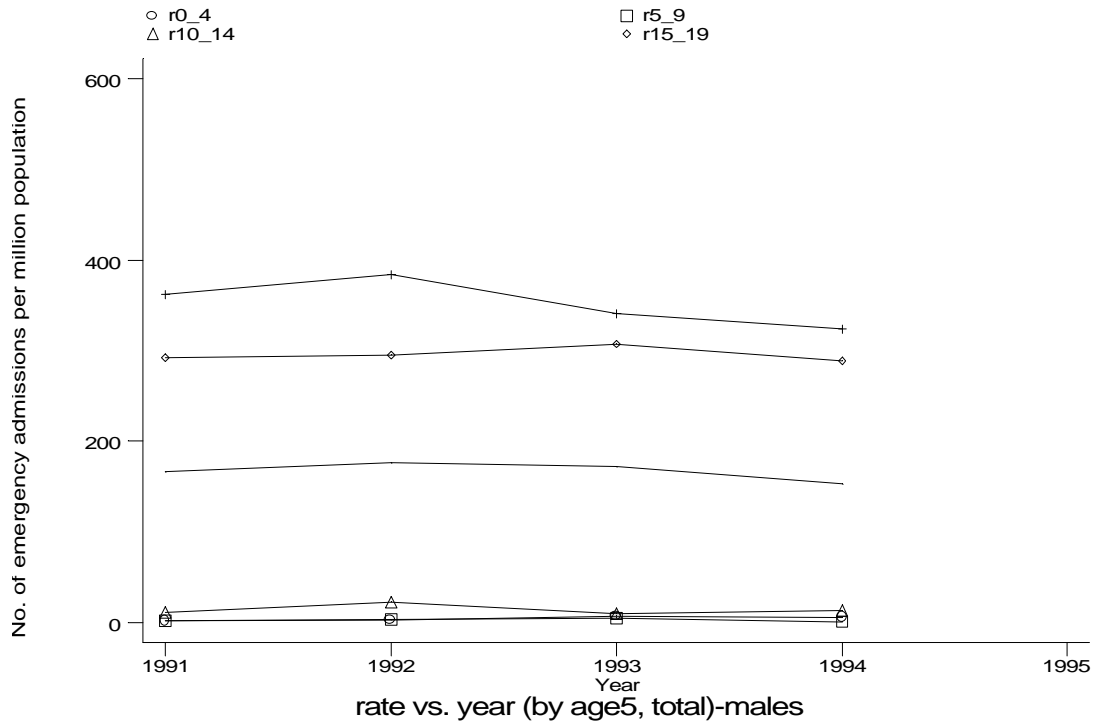
h1e10g3.gph
10. Pneumothorax



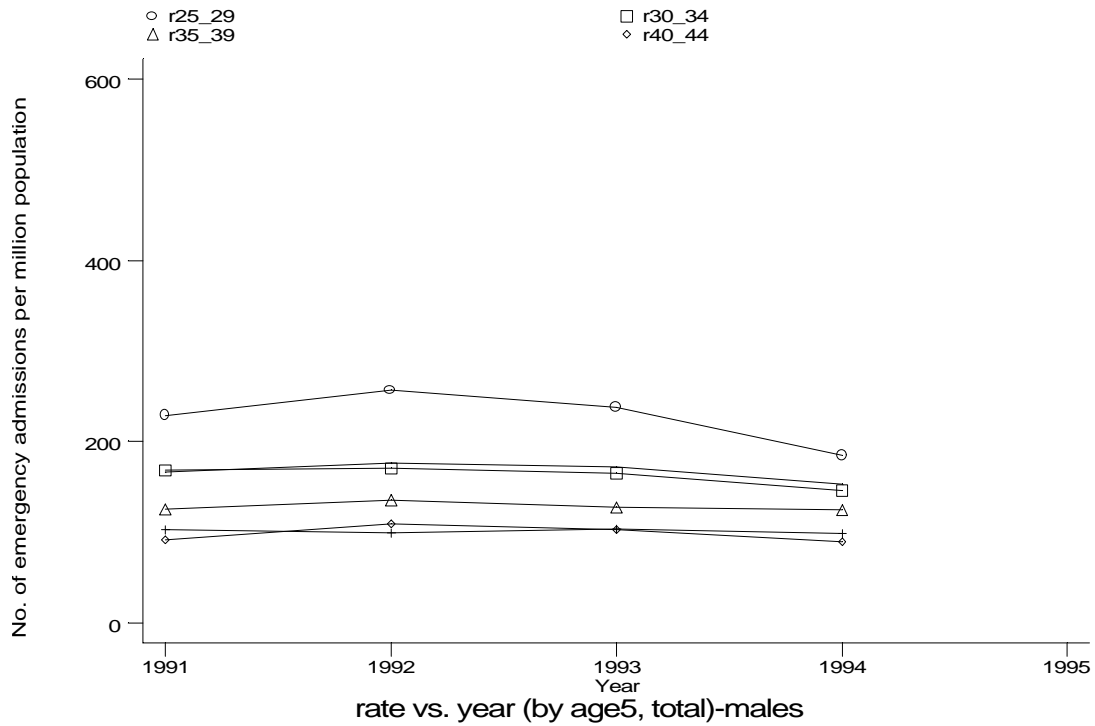
h1e10g4.gph
10. Pneumothorax

Age-sex distributions, yearly trends and cohort analysis (crude rates)

- HES Emergency admissions, England 1991-94



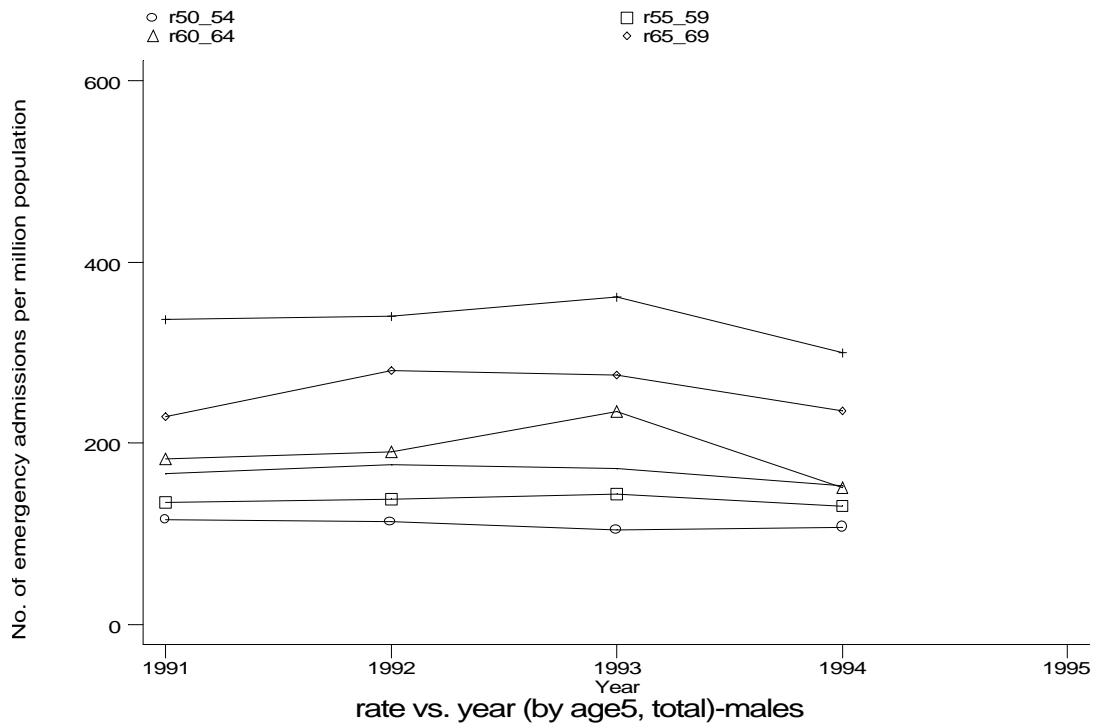
h1e10g1m.gph: MALES
10. Pneumothorax



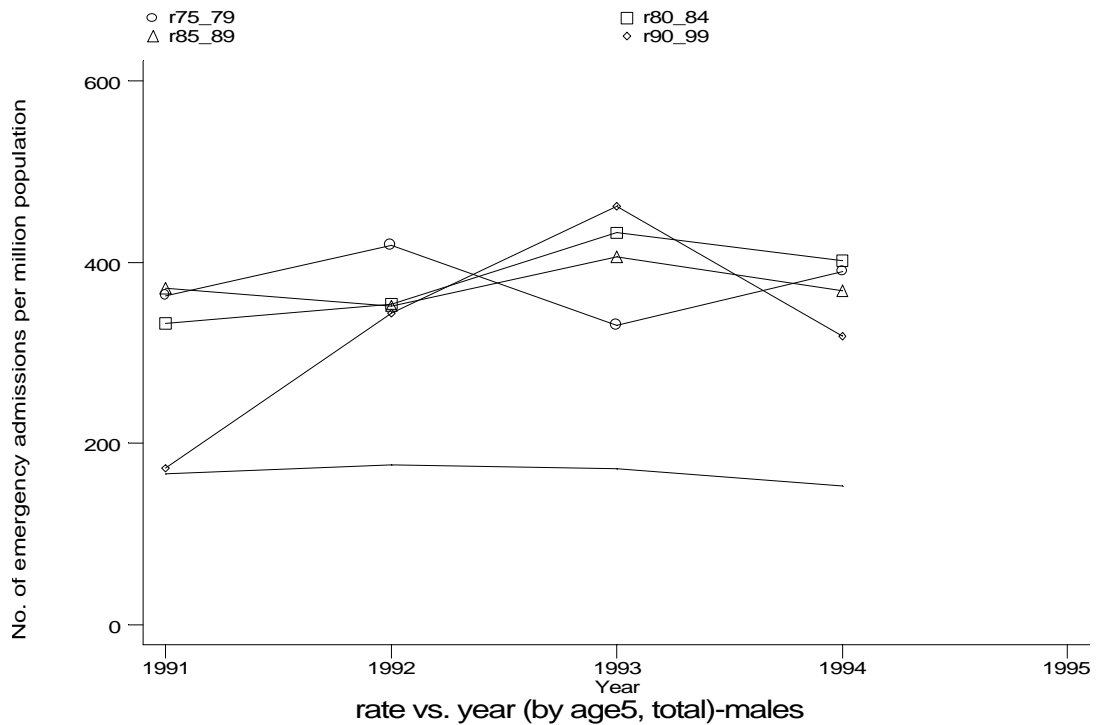
h1e10g2m.gph: MALES
10. Pneumothorax

Age-sex distributions, yearly trends and cohort analysis (crude rates)

- HES Emergency admissions, England 1991-94



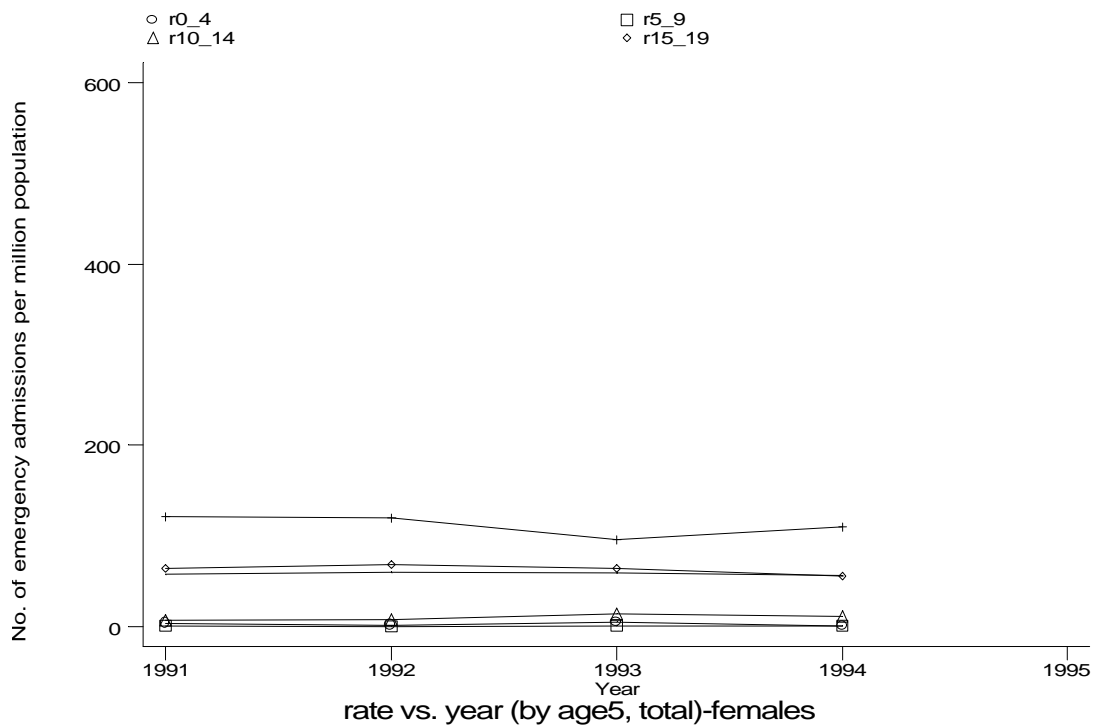
h1e10g3m.gph: MALES
10. Pneumothorax



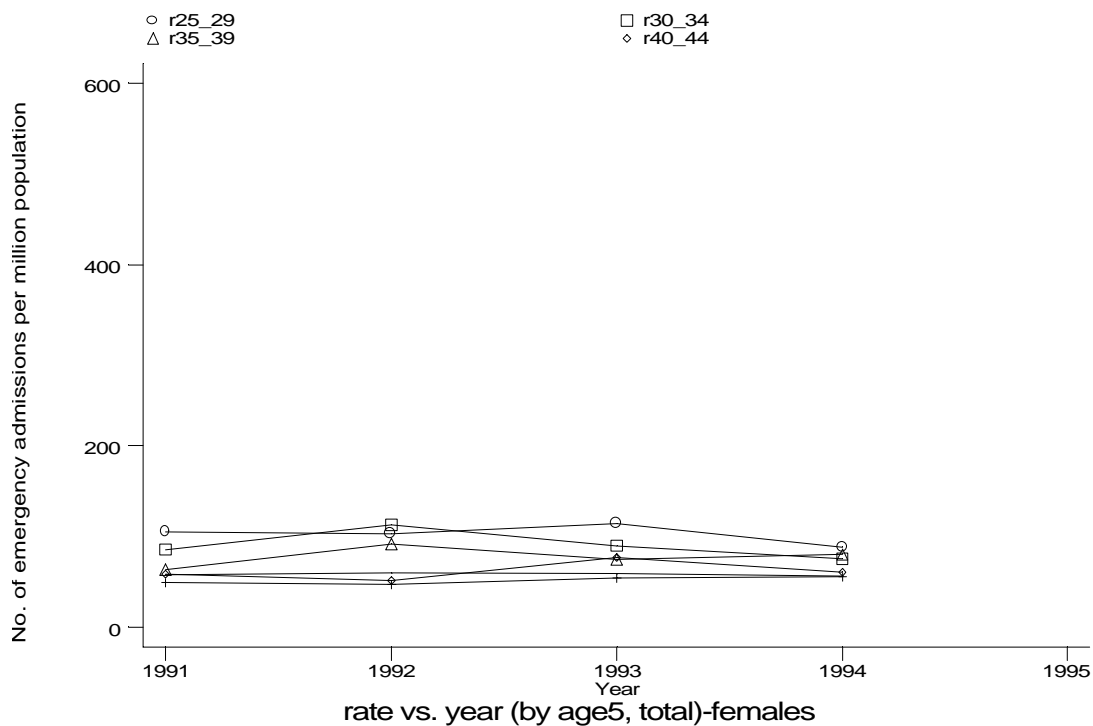
h1e10g4m.gph: MALES
10. Pneumothorax

Age-sex distributions, yearly trends and cohort analysis (crude rates)

- HES Emergency admissions, England 1991-94



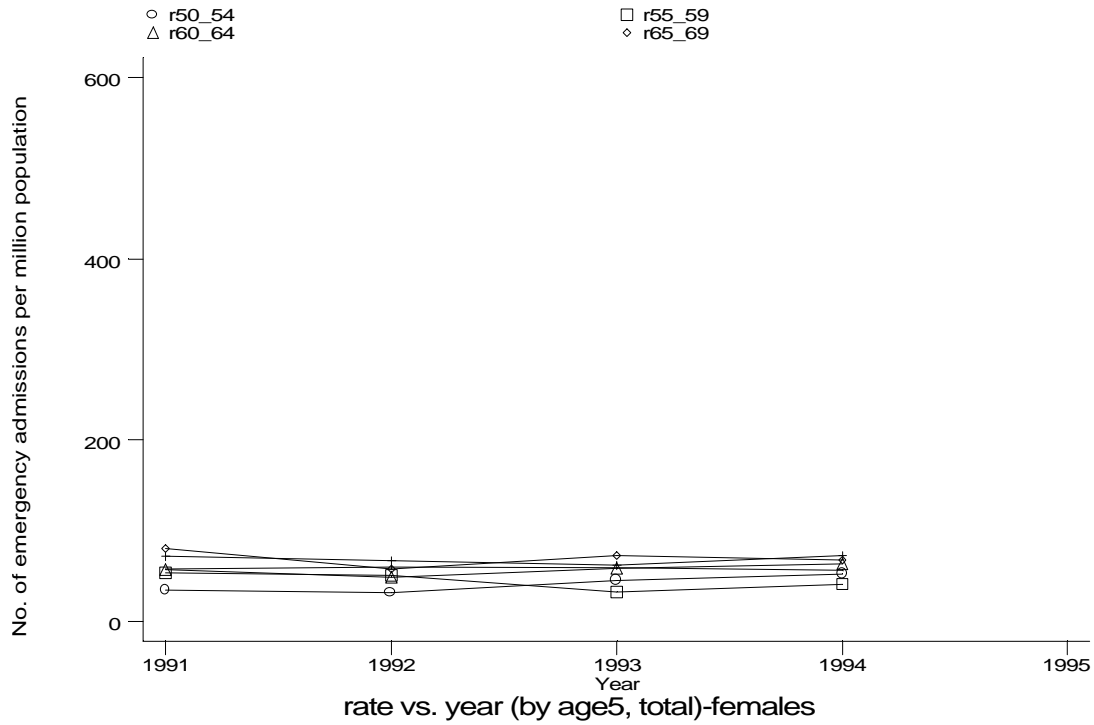
h1e10g1f.gph: FEMALES
10. Pneumothorax



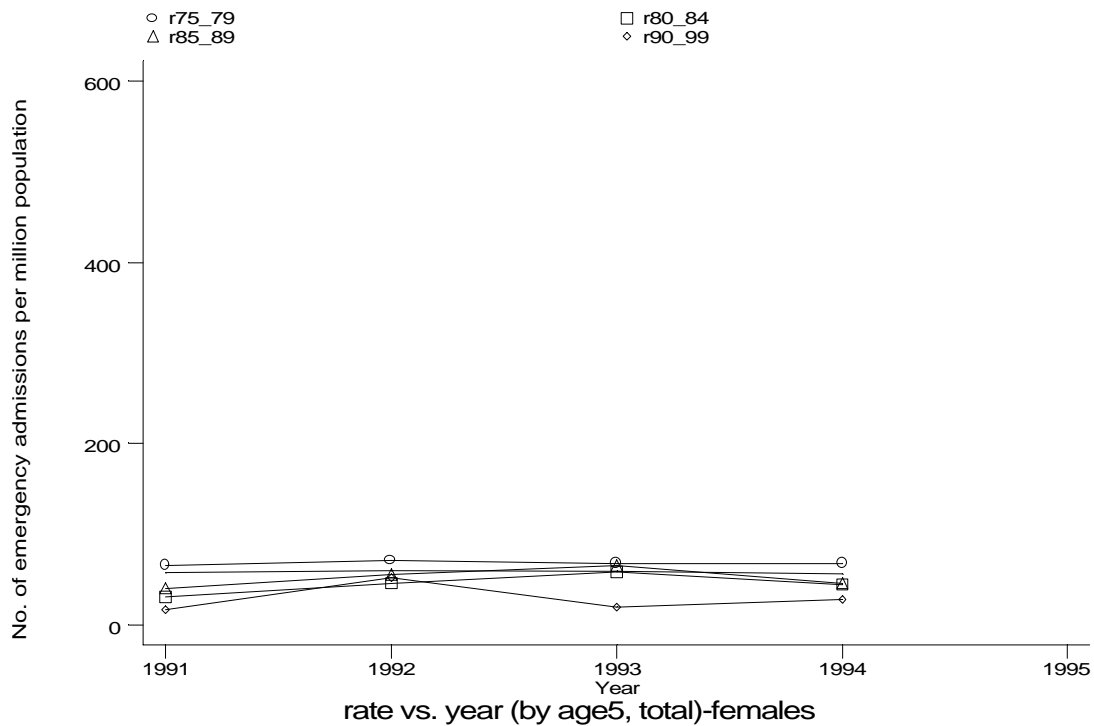
h1e10g2f.gph: FEMALES
10. Pneumothorax

Age-sex distributions, yearly trends and cohort analysis (crude rates)

- HES Emergency admissions, England 1991-94



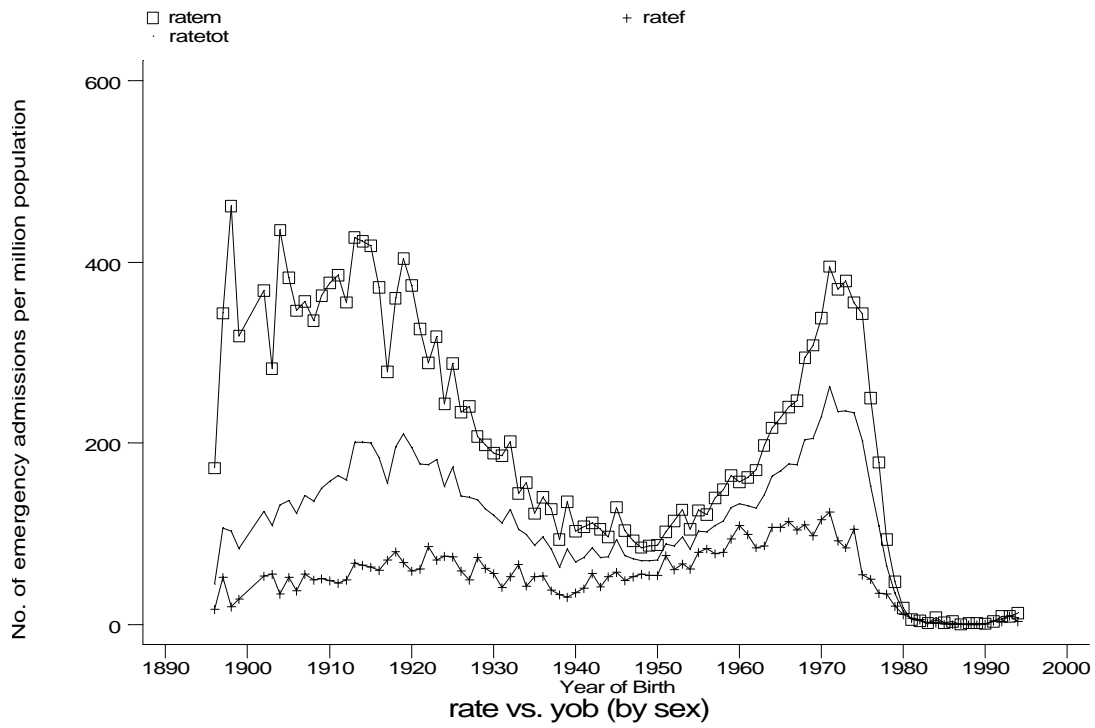
h1e10g3f.gph: FEMALES
10. Pneumothorax



h1e10g4f.gph: FEMALES
10. Pneumothorax

Age-sex distributions, yearly trends and cohort analysis (crude rates)

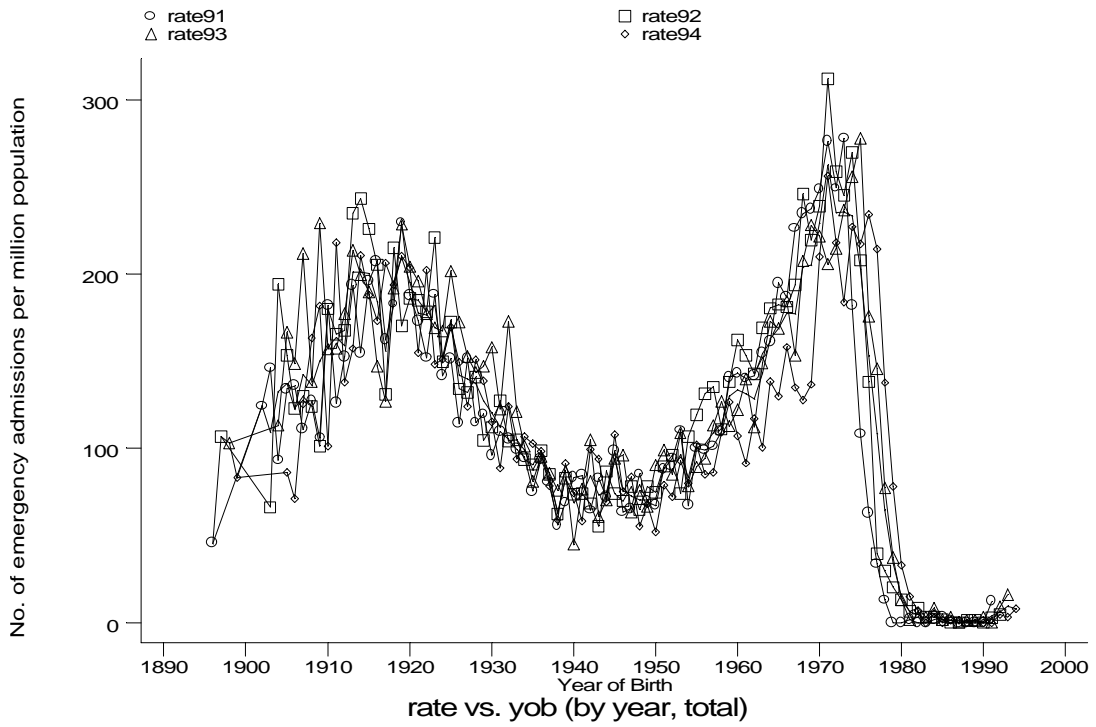
- HES Emergency admissions, England 1991-94



h1e10h.gph
10. Pneumothorax

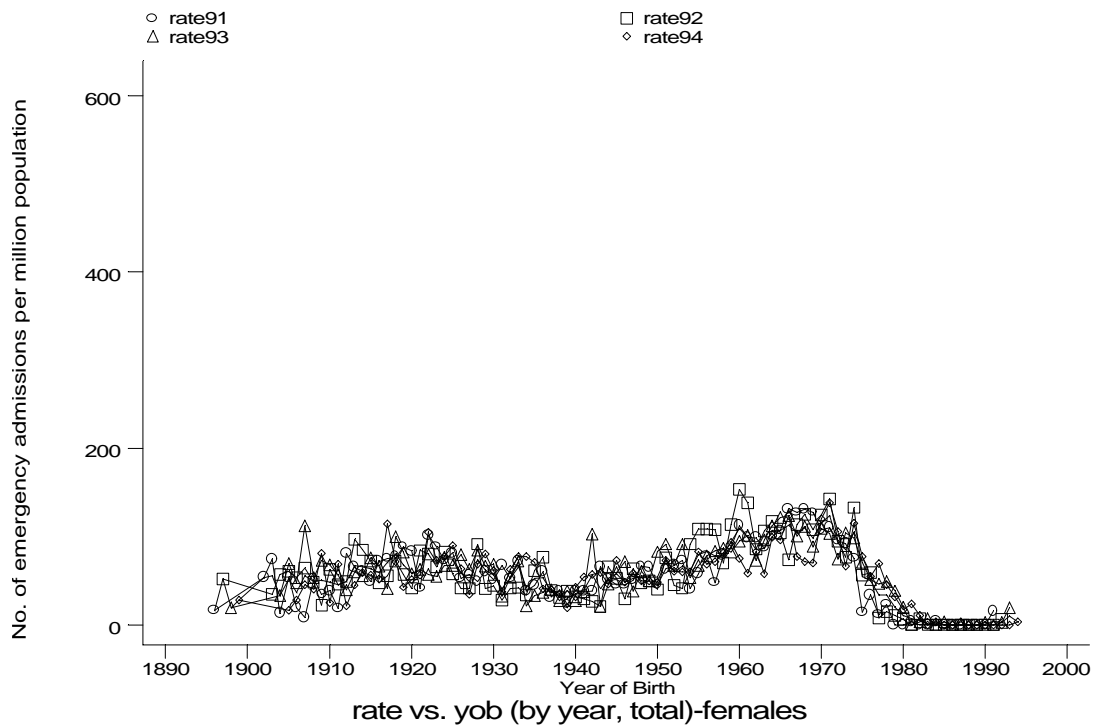
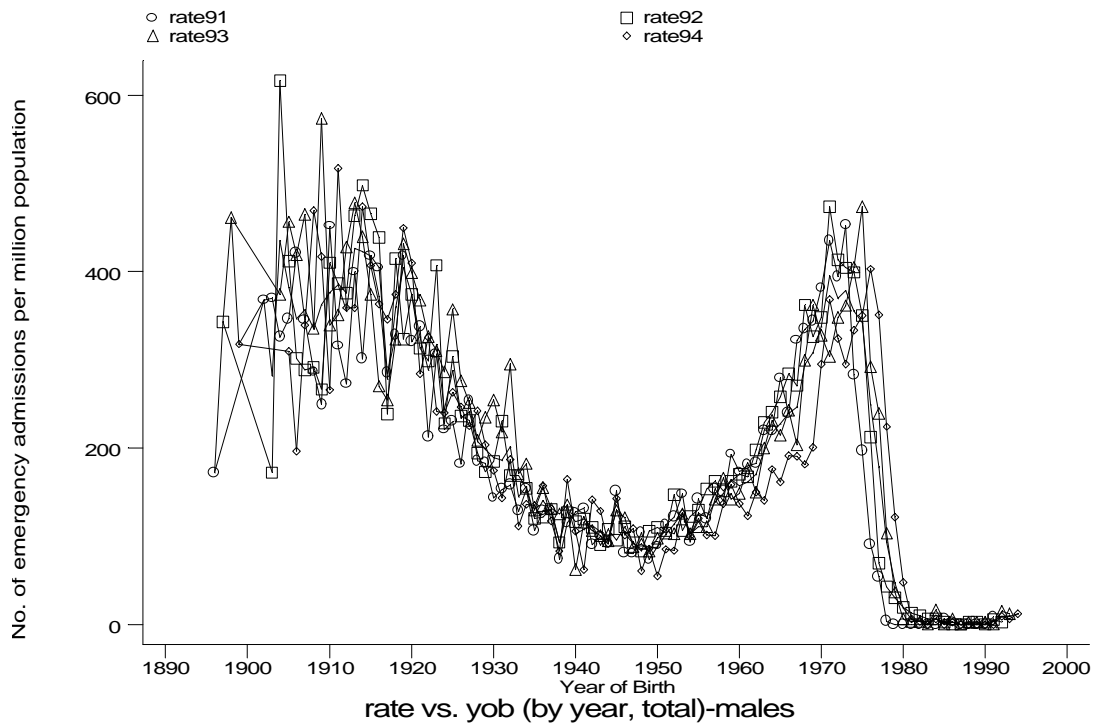
Age-sex distributions, yearly trends and cohort analysis (crude rates)

- HES Emergency admissions, England 1991-94



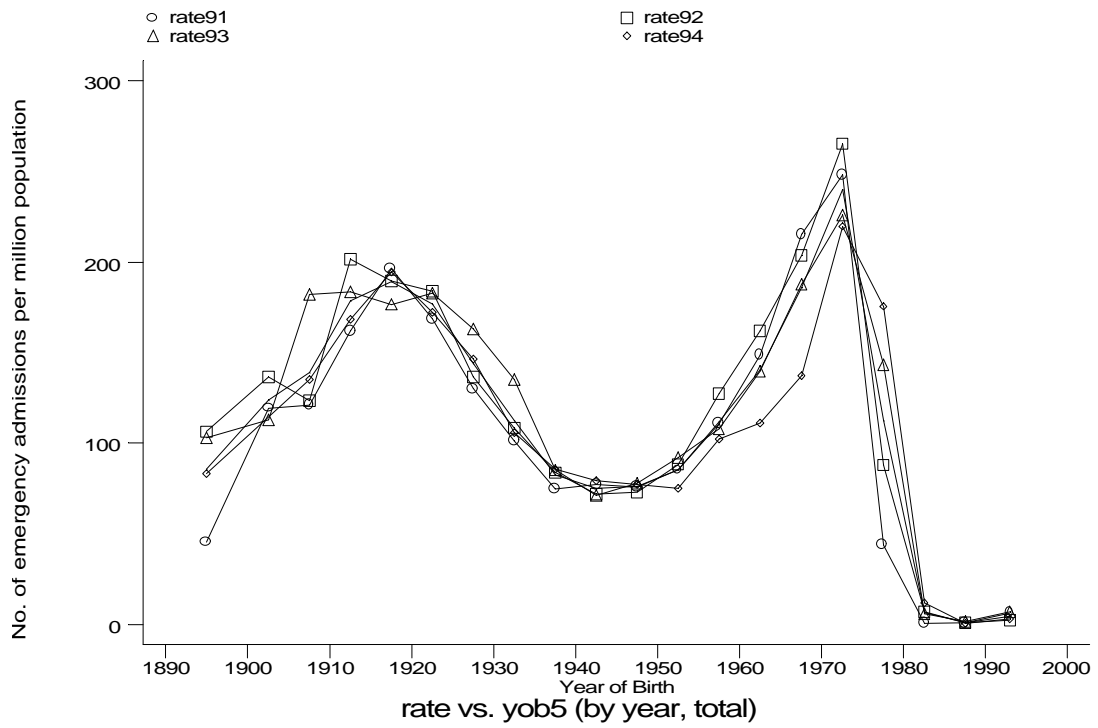
Age-sex distributions, yearly trends and cohort analysis (crude rates)

- HES Emergency admissions, England 1991-94



Age-sex distributions, yearly trends and cohort analysis (crude rates)

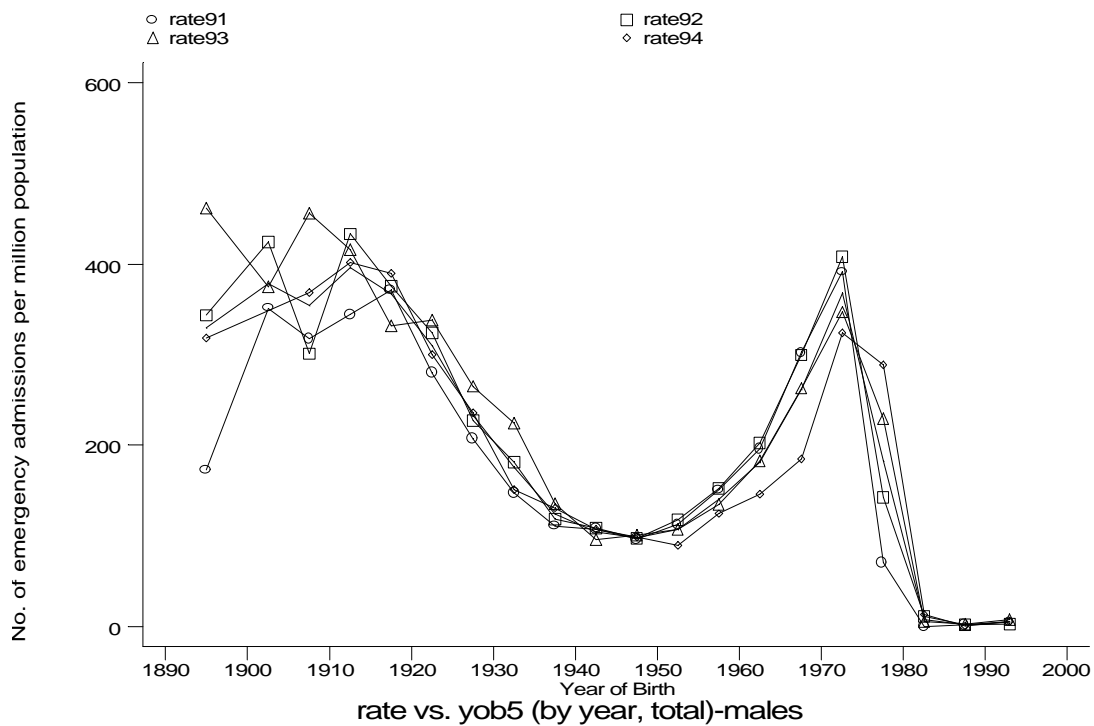
- HES Emergency admissions, England 1991-94



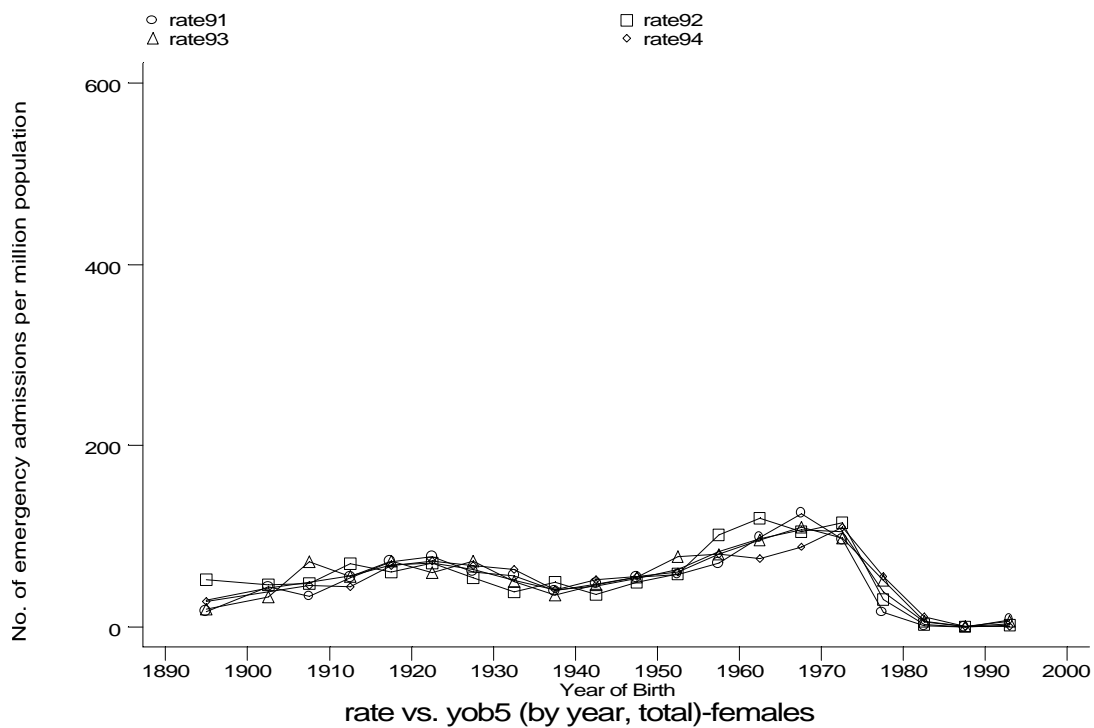
h1e10j1.gph
10. Pneumothorax

Age-sex distributions, yearly trends and cohort analysis (crude rates)

- HES Emergency admissions, England 1991-94



h1e10j1m.gph: MALES
10. Pneumothorax



h1e10j1f.gph: FEMALES
10. Pneumothorax