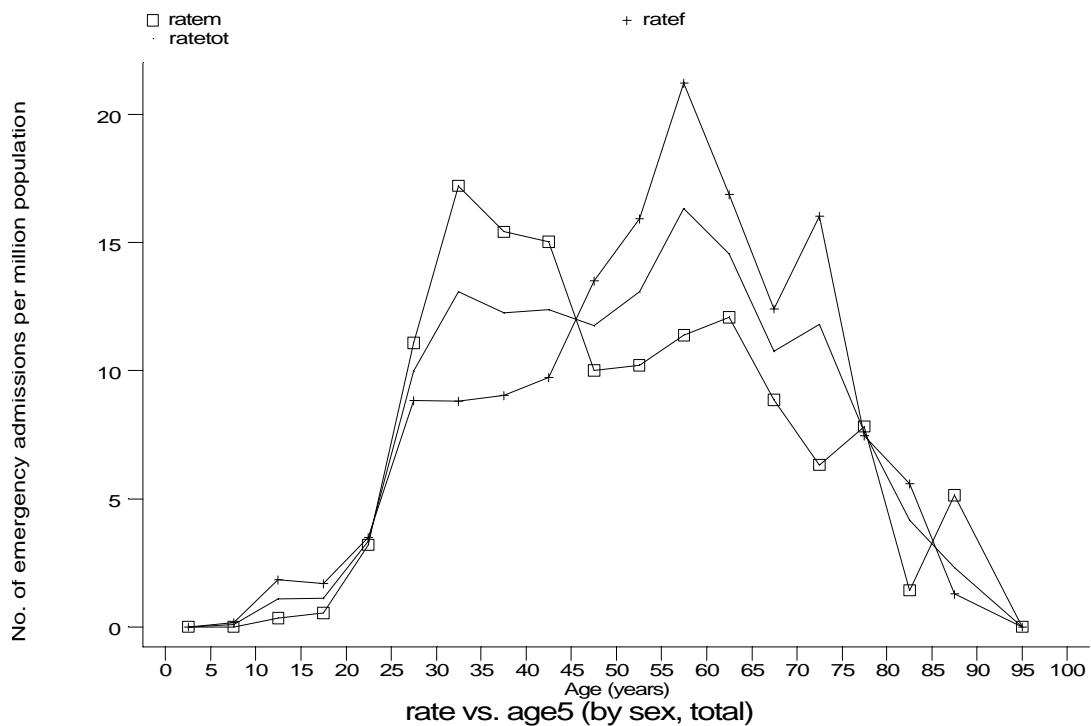
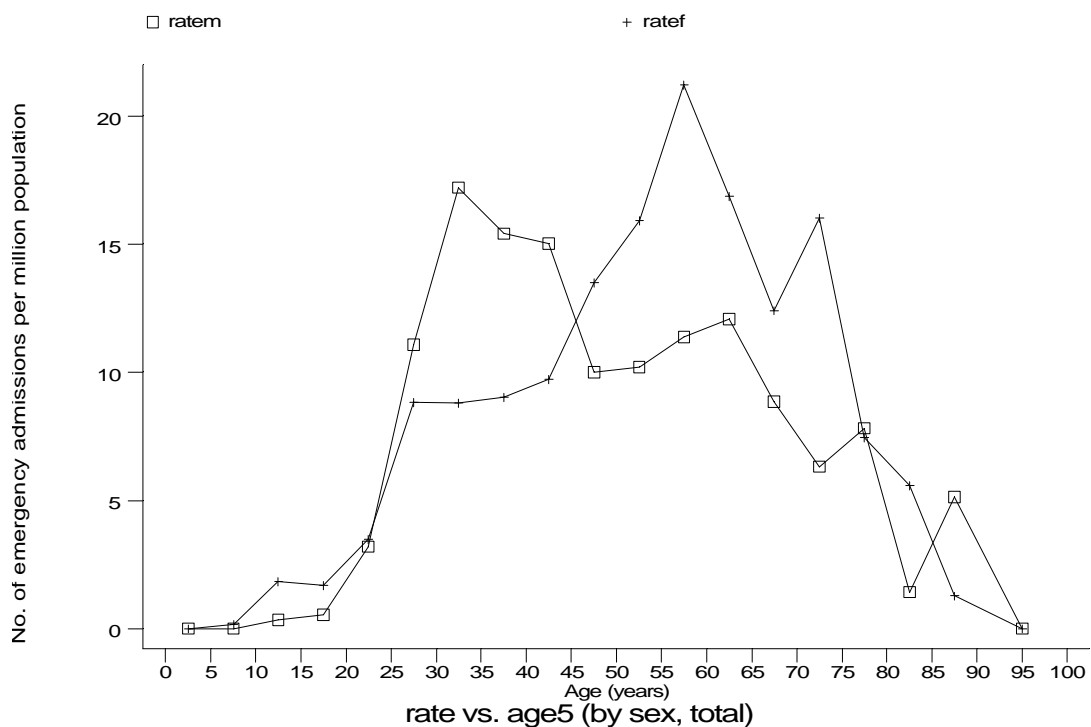


Age-sex distributions, yearly trends and cohort analysis (crude rates)

- HES Emergency admissions, England, April 1991-December 1994



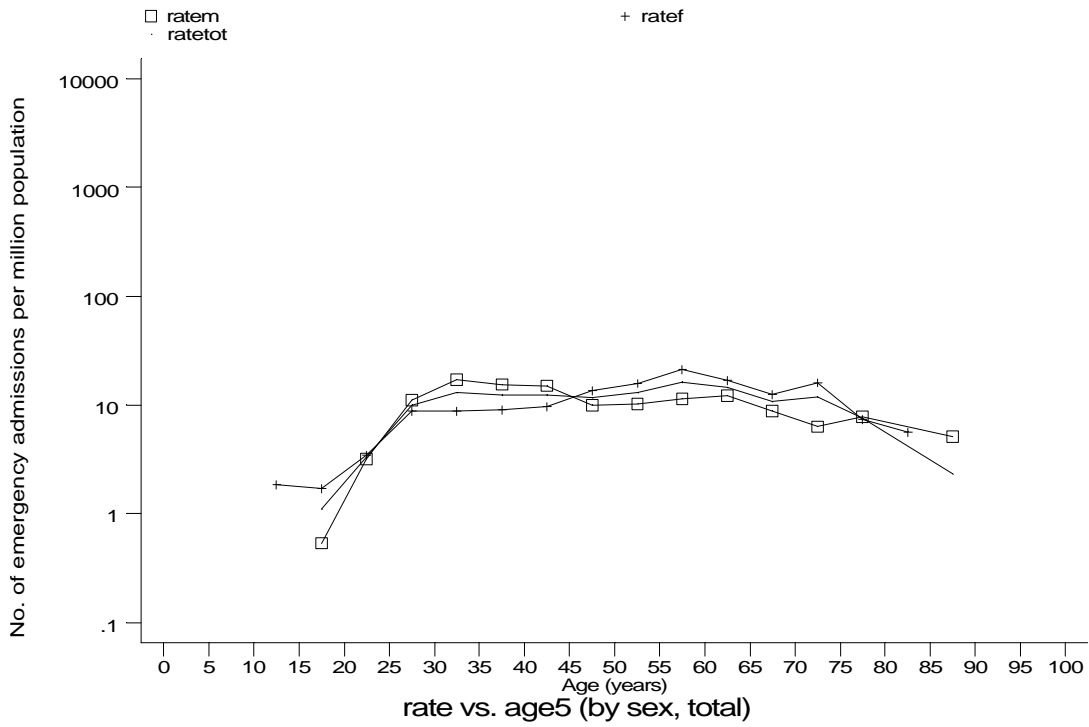
h1e8a1.gph
8. Sarcoidosis



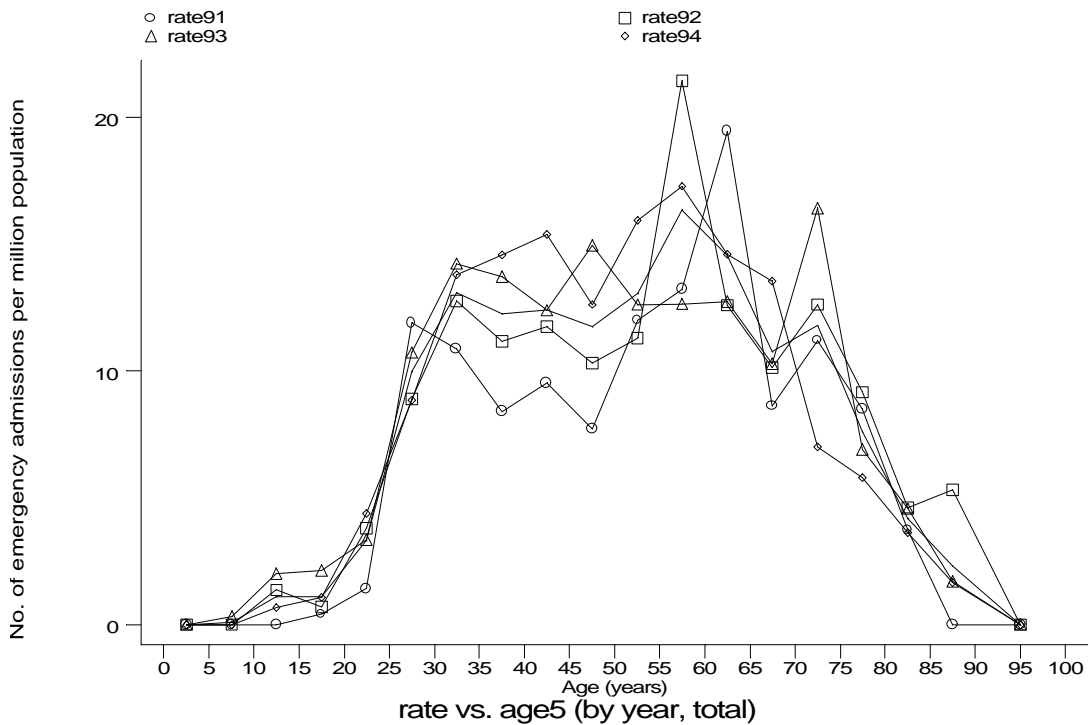
h1e8a1x.gph
8. Sarcoidosis

Age-sex distributions, yearly trends and cohort analysis (crude rates)

- HES Emergency admissions, England, April 1991-December 1994



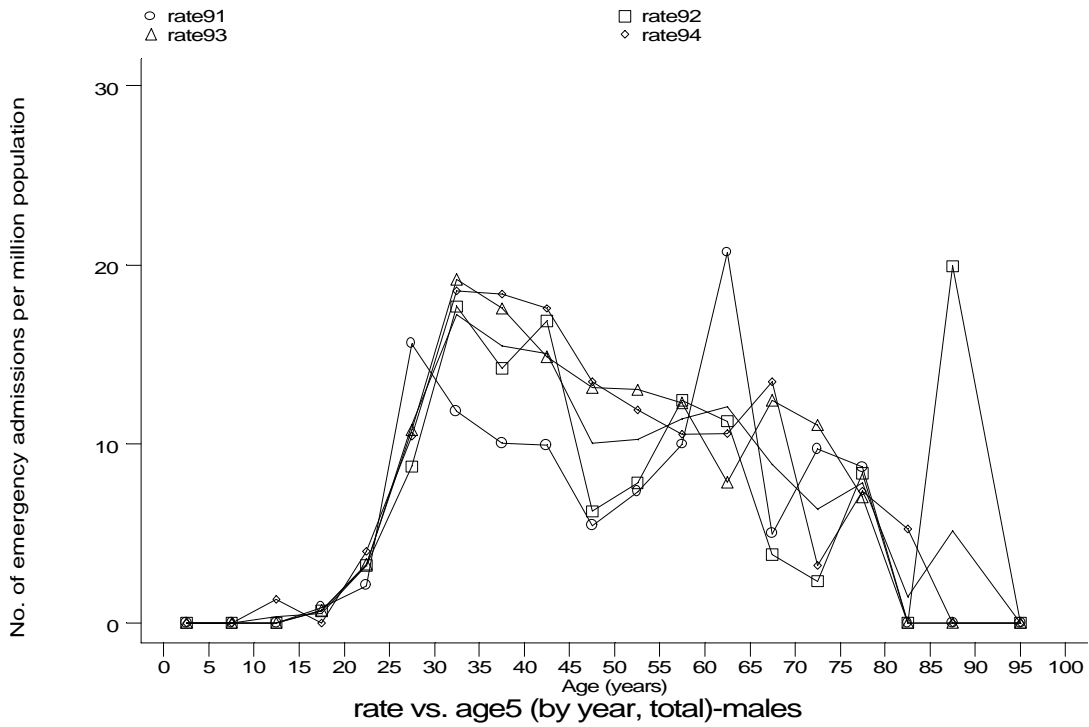
h1e8a2.gph
8. Sarcoidosis



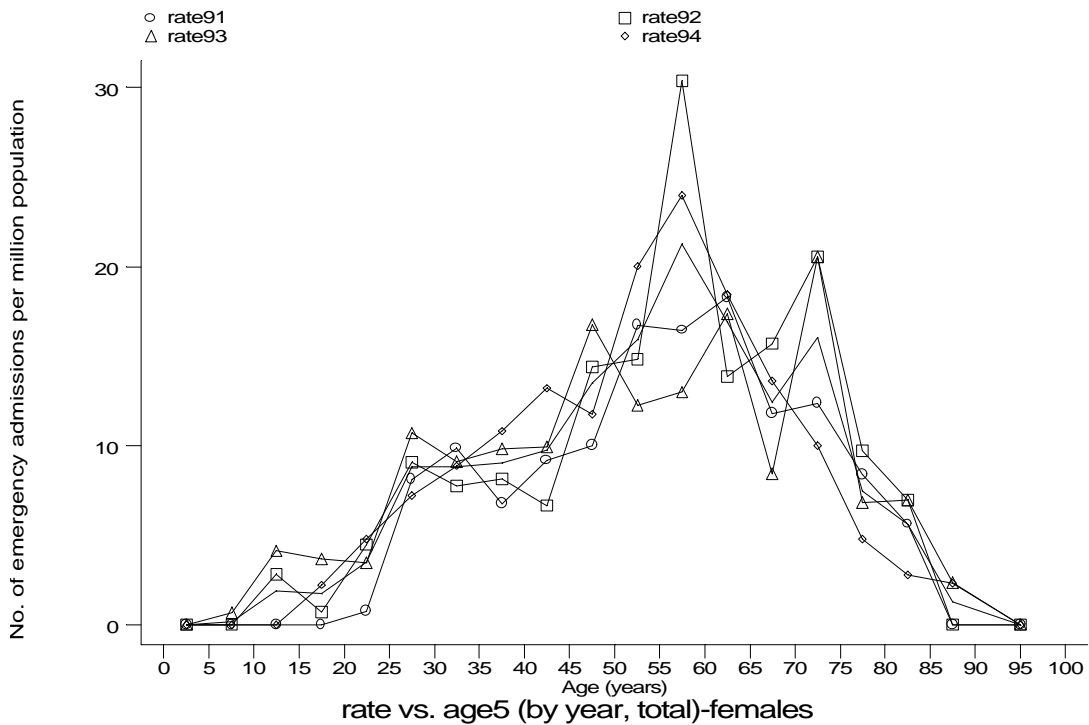
h1e8b1.gph
8. Sarcoidosis

Age-sex distributions, yearly trends and cohort analysis (crude rates)

- HES Emergency admissions, England, April 1991-December 1994



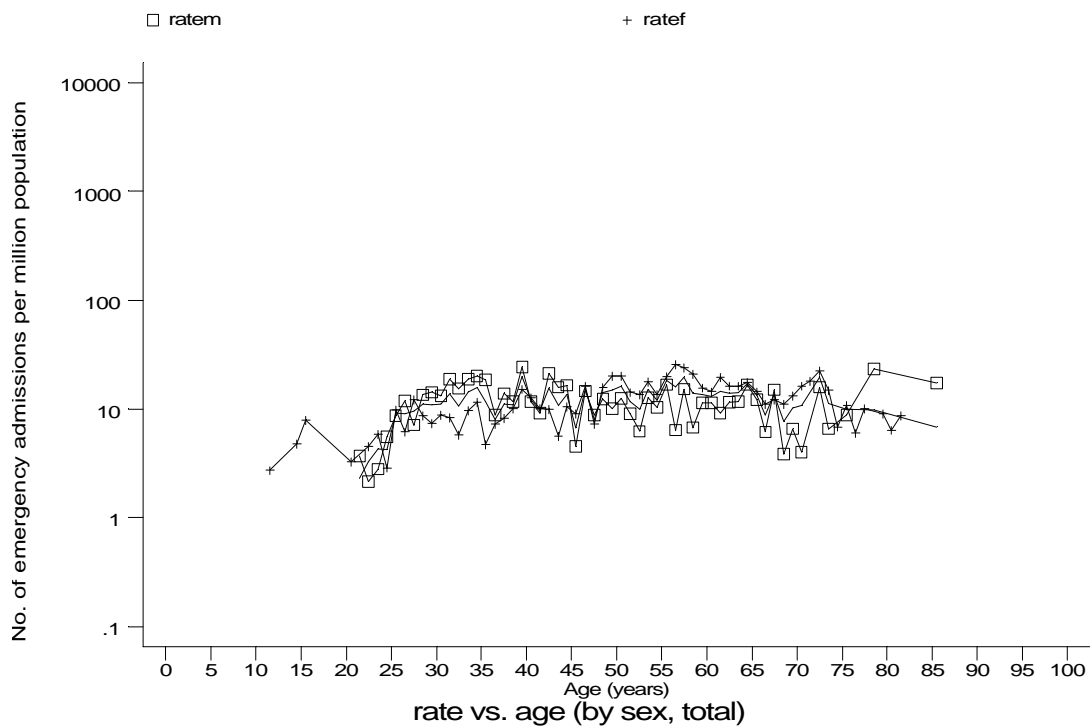
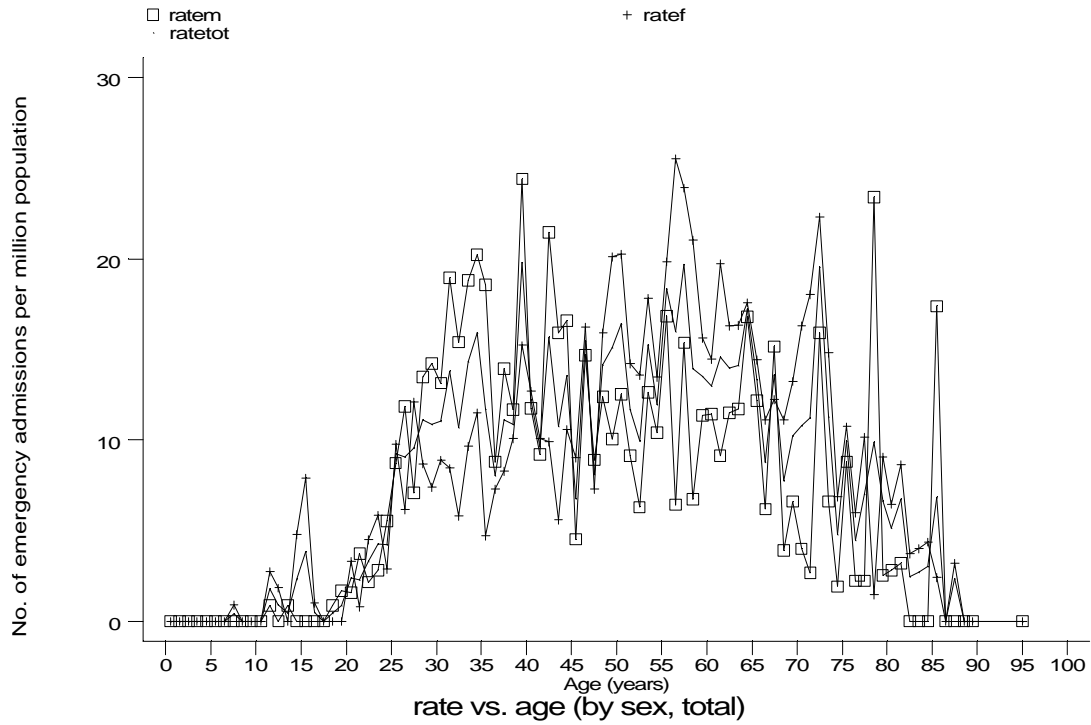
h1e8b1m.gph: MALES
8. Sarcoidosis



h1e8b1f.gph: FEMALES
8. Sarcoidosis

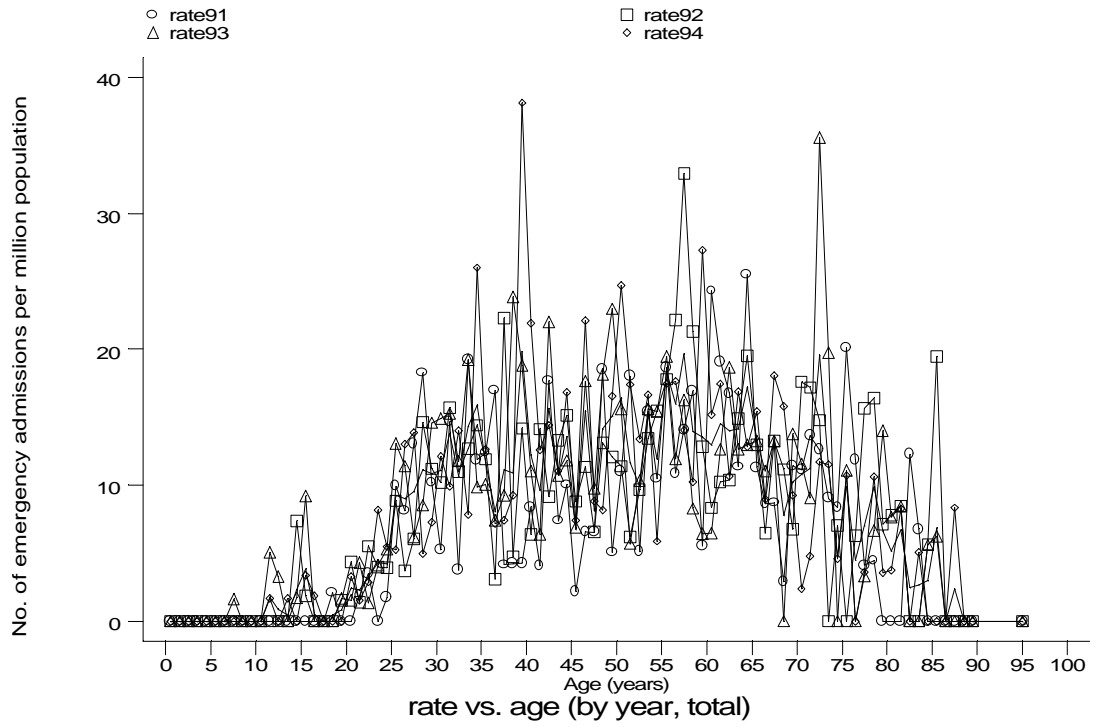
Age-sex distributions, yearly trends and cohort analysis (crude rates)

- HES Emergency admissions, England, April 1991-December 1994



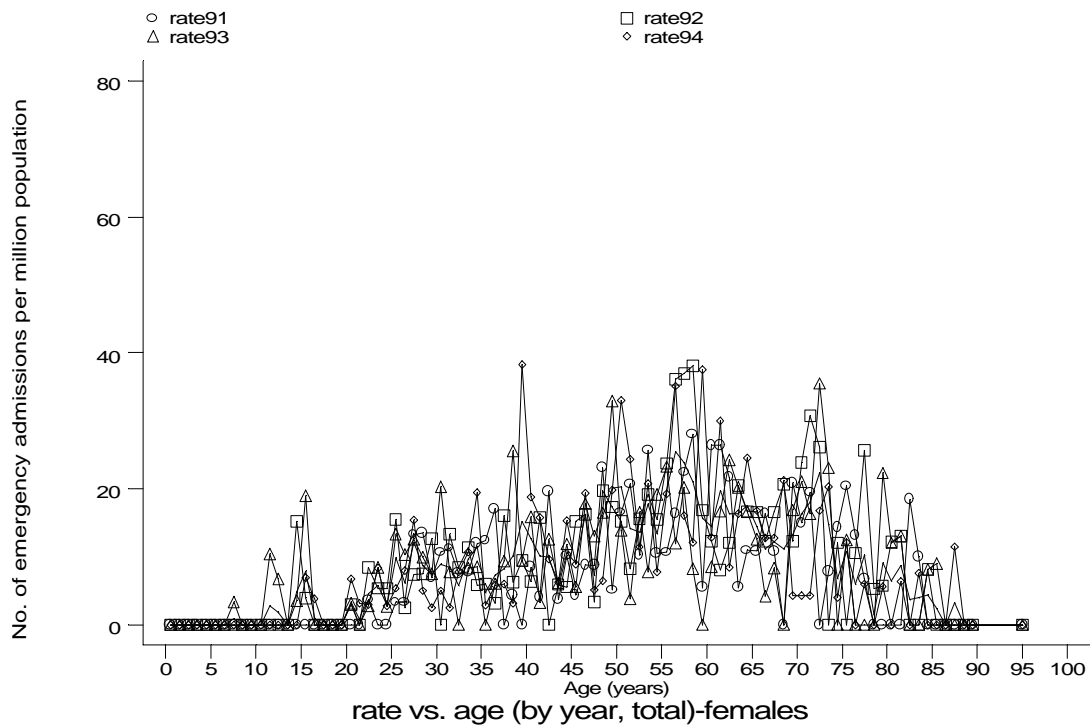
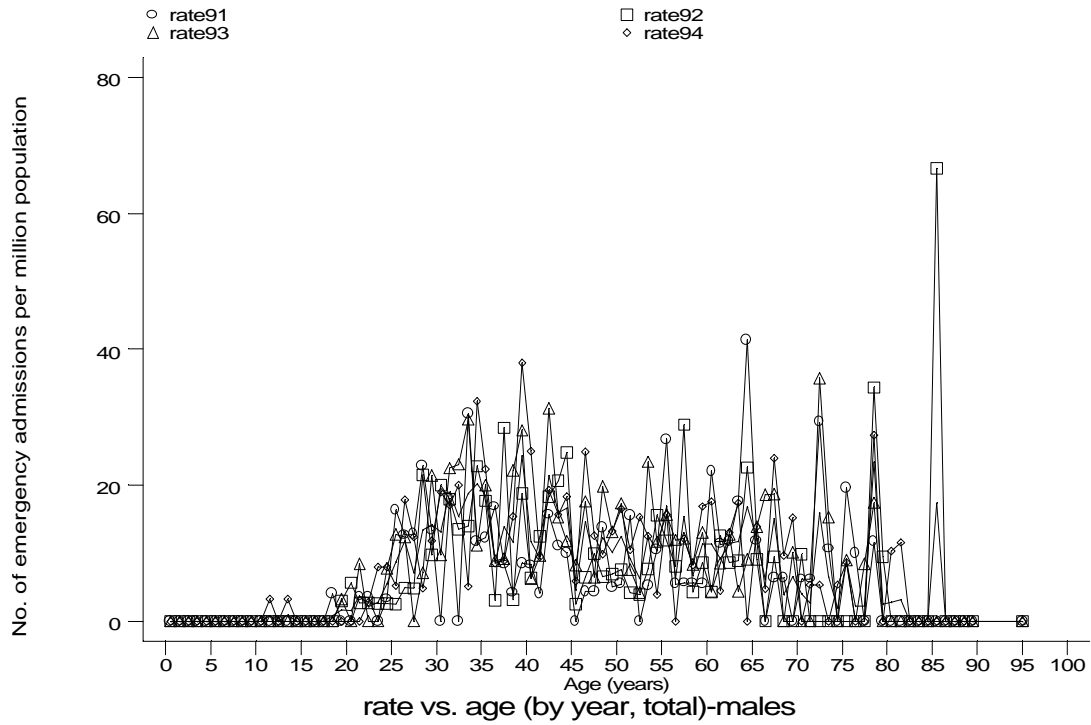
Age-sex distributions, yearly trends and cohort analysis (crude rates)

- HES Emergency admissions, England, April 1991-December 1994



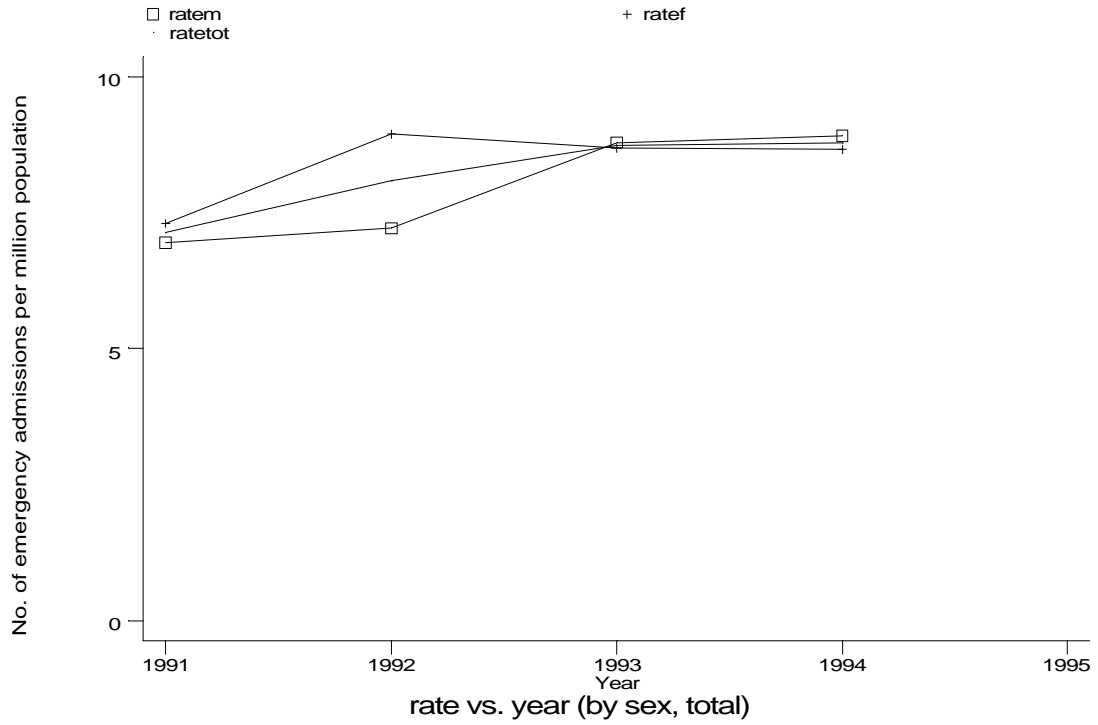
Age-sex distributions, yearly trends and cohort analysis (crude rates)

- HES Emergency admissions, England, April 1991-December 1994

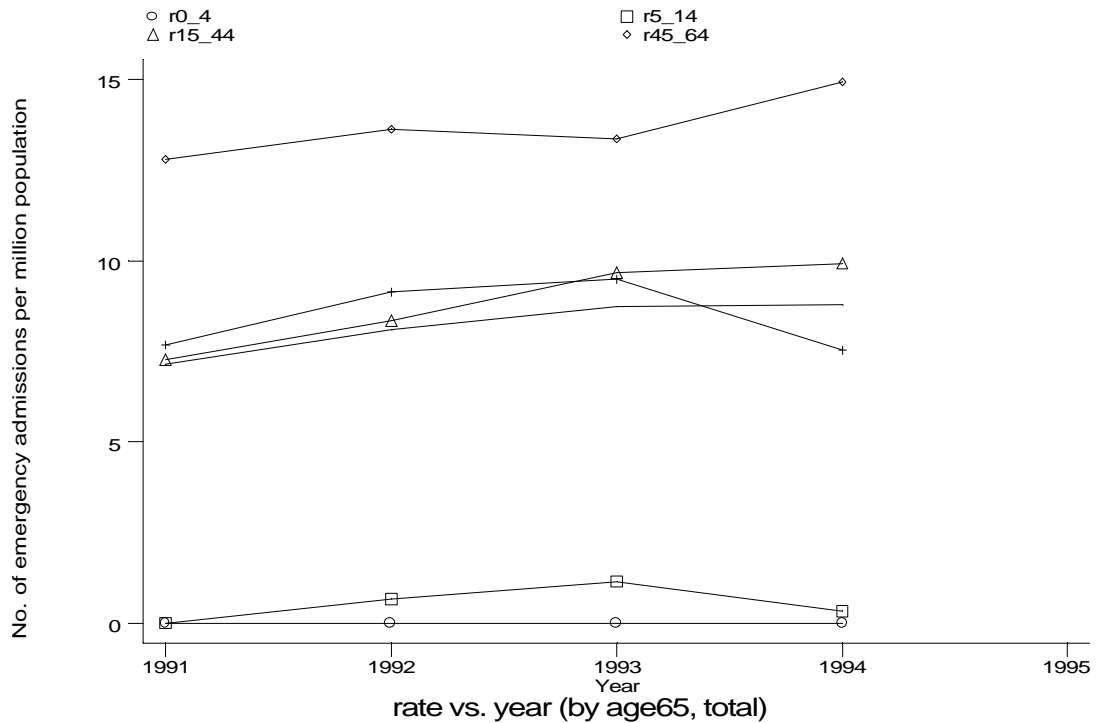


Age-sex distributions, yearly trends and cohort analysis (crude rates)

- HES Emergency admissions, England, April 1991-December 1994



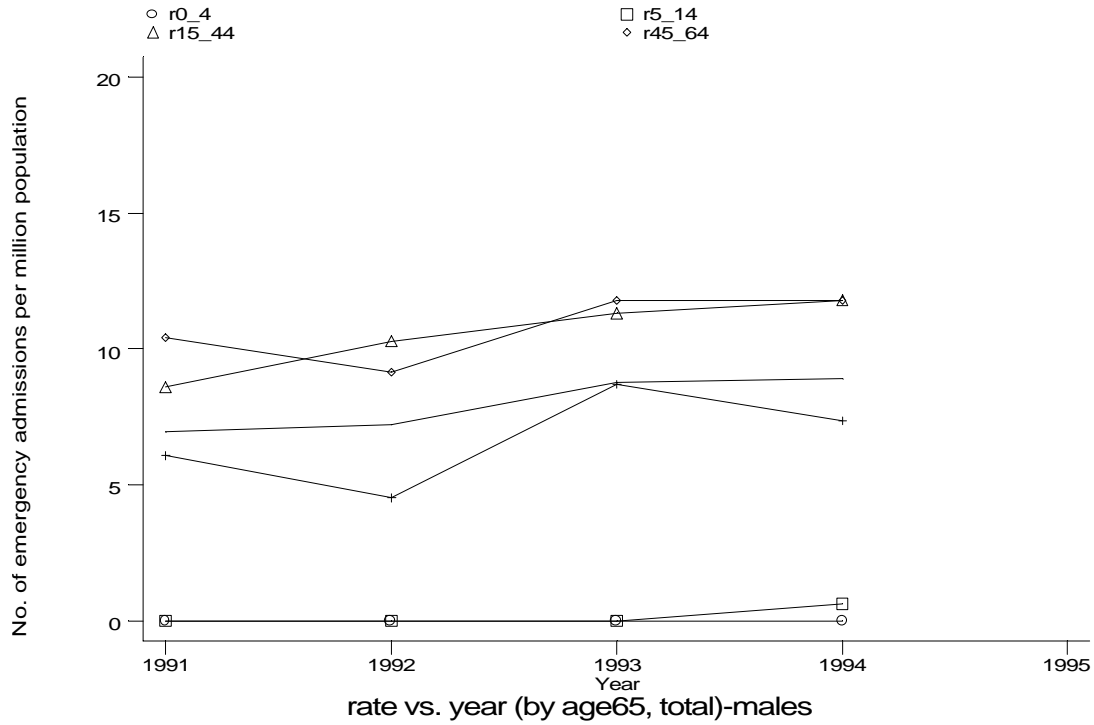
h1e8e.gph
8. Sarcoidosis



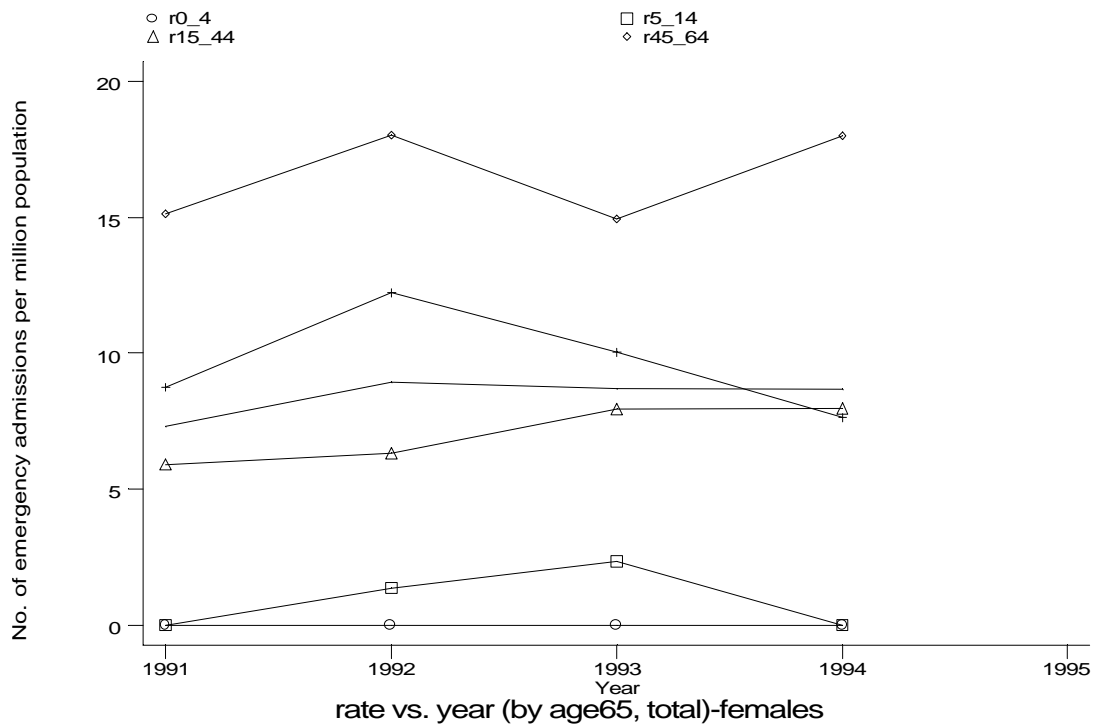
h1e8f.gph
8. Sarcoidosis

Age-sex distributions, yearly trends and cohort analysis (crude rates)

- HES Emergency admissions, England, April 1991-December 1994



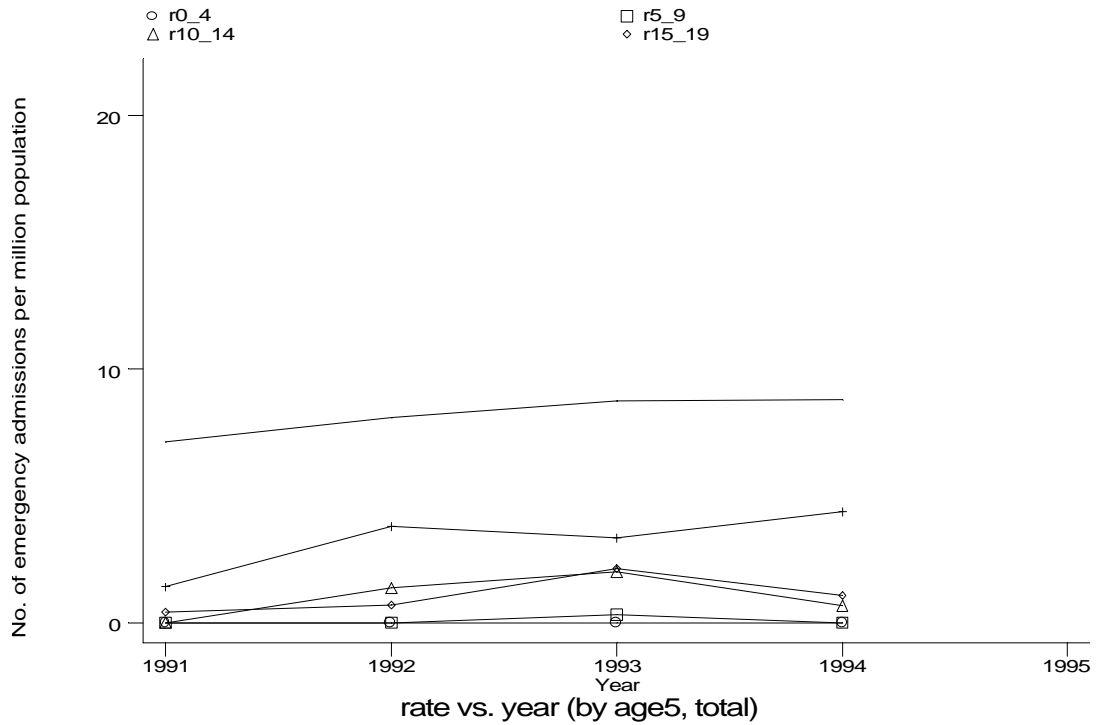
h1e8fm.gph: MALES
8. Sarcoidosis



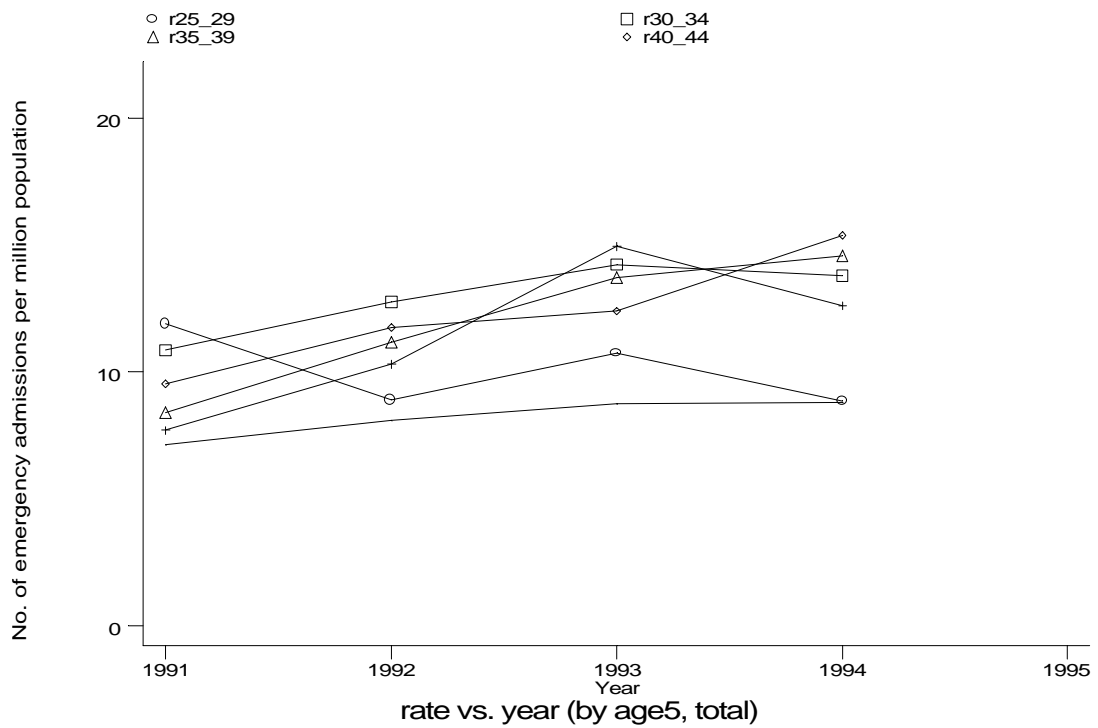
h1e8ff.gph: FEMALES
8. Sarcoidosis

Age-sex distributions, yearly trends and cohort analysis (crude rates)

- HES Emergency admissions, England, April 1991-December 1994



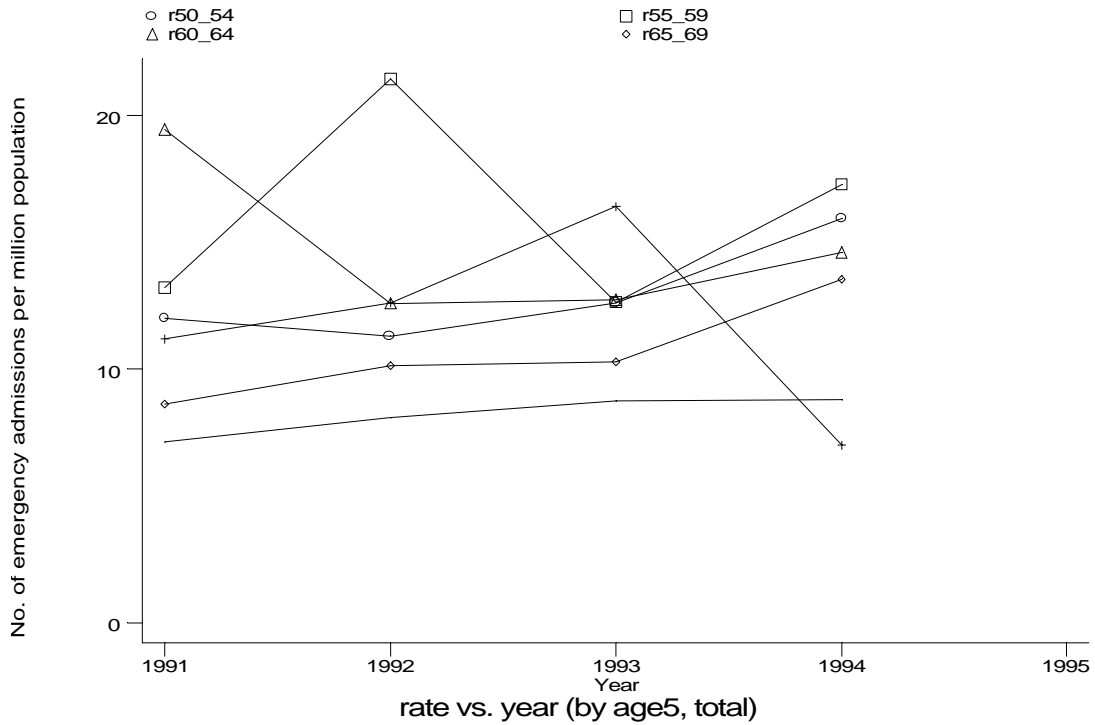
h1e8g1.gph
8. Sarcoidosis



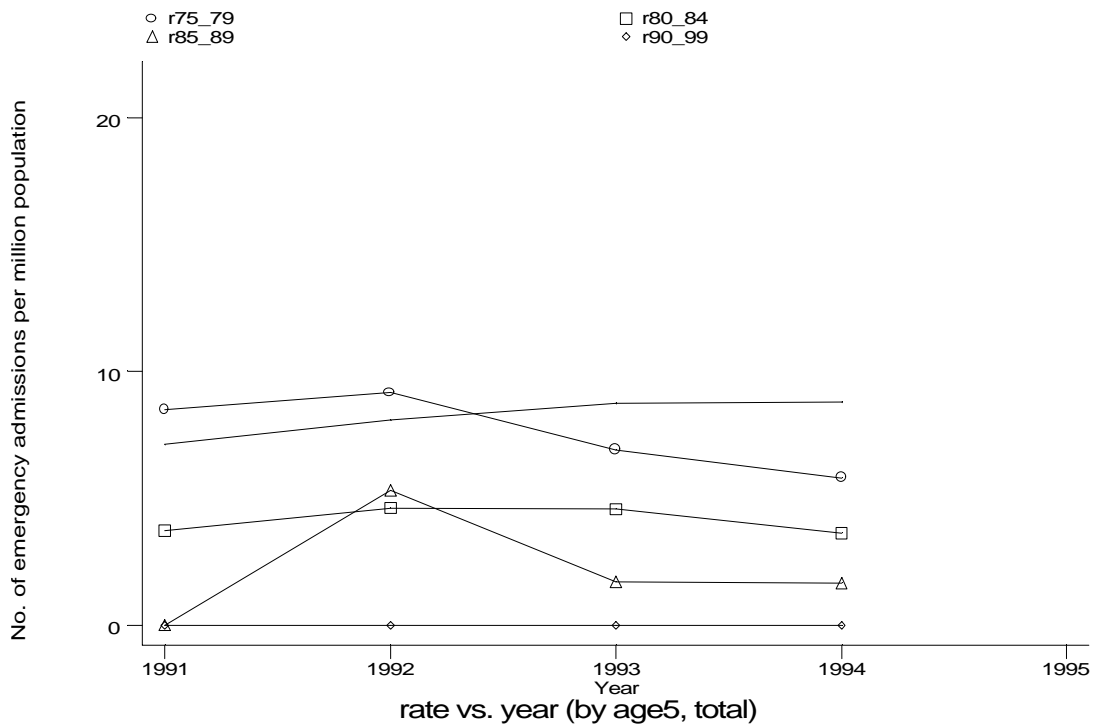
h1e8g2.gph
8. Sarcoidosis

Age-sex distributions, yearly trends and cohort analysis (crude rates)

- HES Emergency admissions, England, April 1991-December 1994



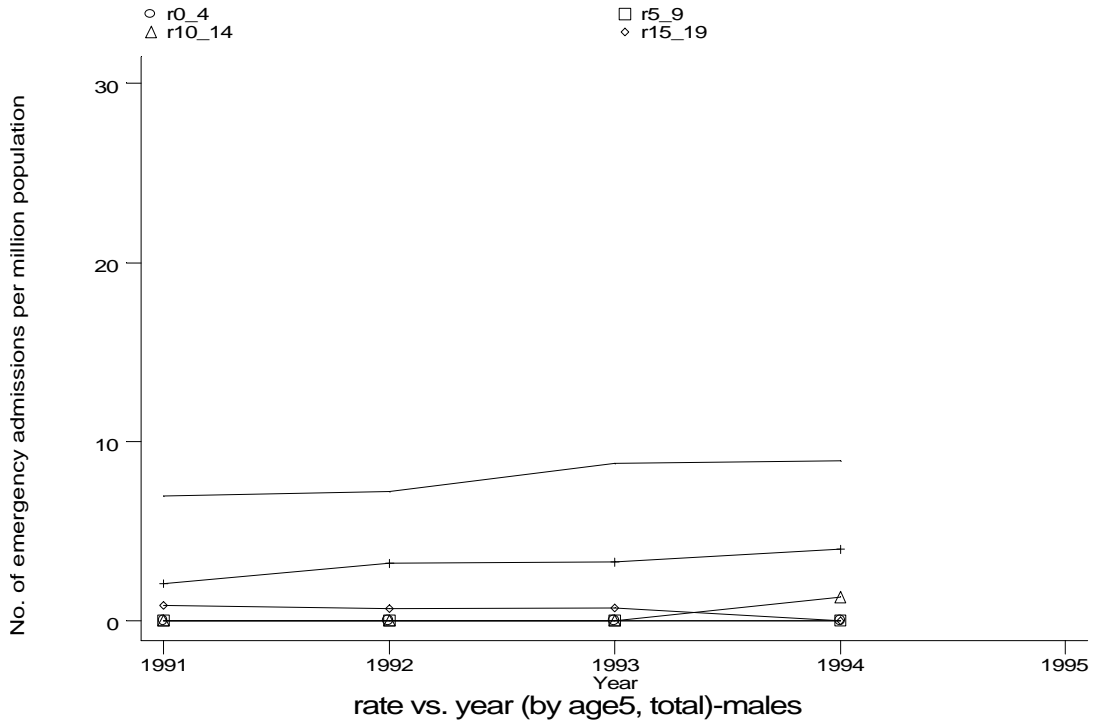
h1e8g3.gph
8. Sarcoidosis



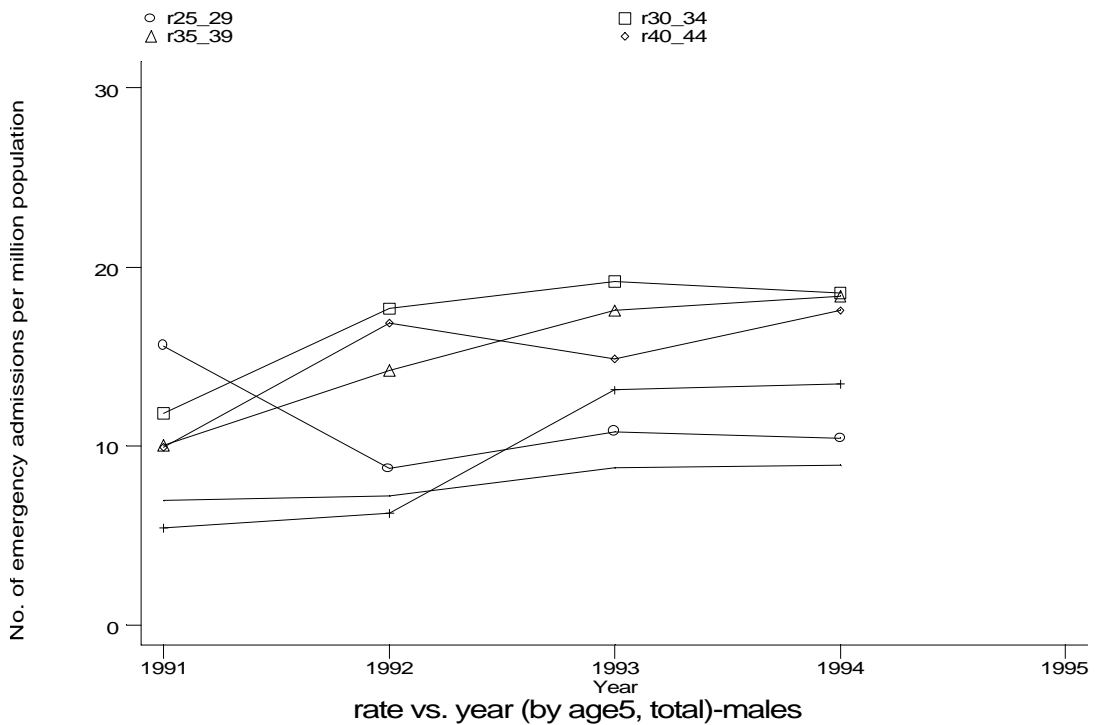
h1e8g4.gph
8. Sarcoidosis

Age-sex distributions, yearly trends and cohort analysis (crude rates)

- HES Emergency admissions, England, April 1991-December 1994



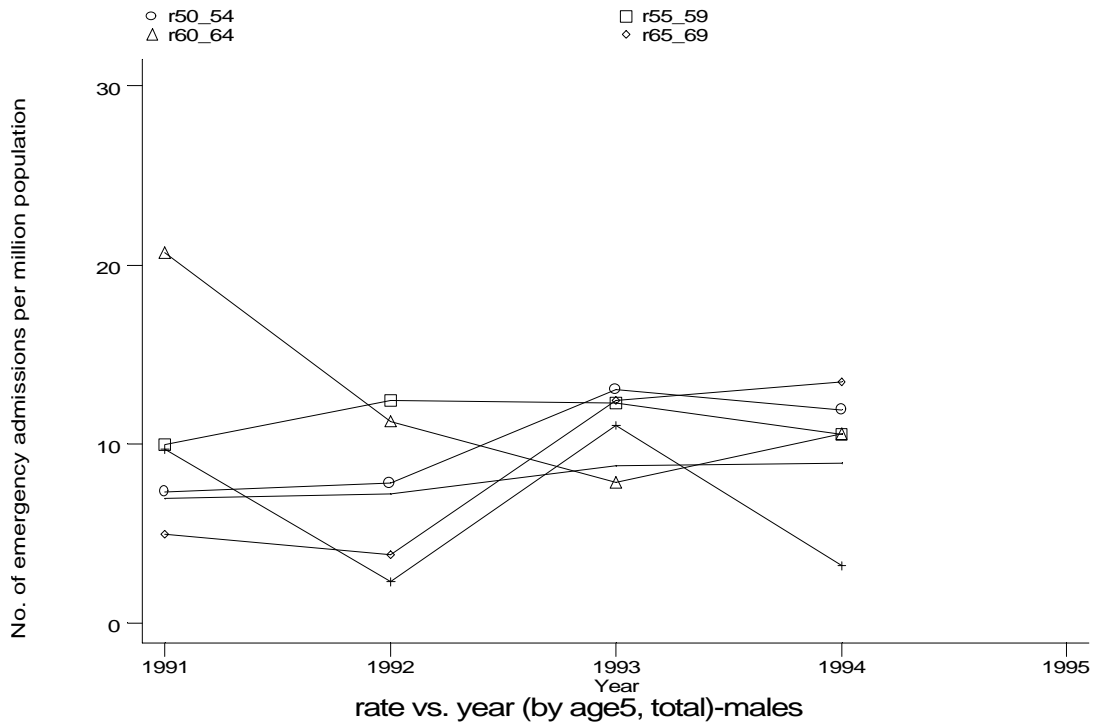
h1e8g1m.gph: MALES
8. Sarcoidosis



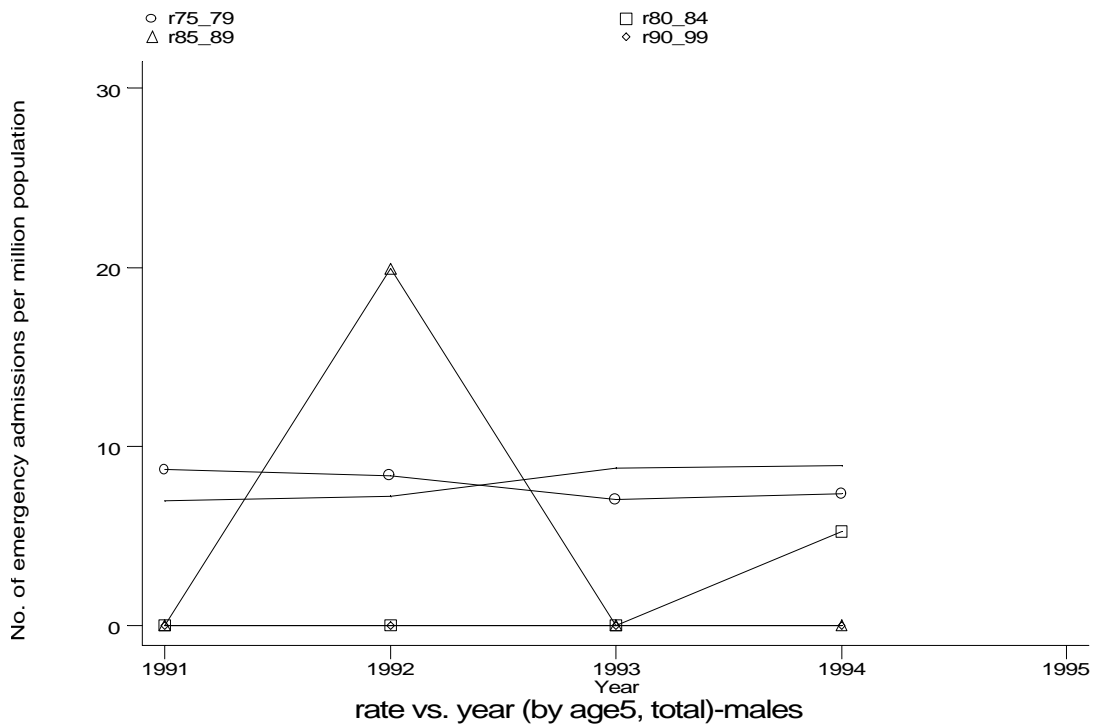
h1e8g2m.gph: MALES
8. Sarcoidosis

Age-sex distributions, yearly trends and cohort analysis (crude rates)

- HES Emergency admissions, England, April 1991-December 1994



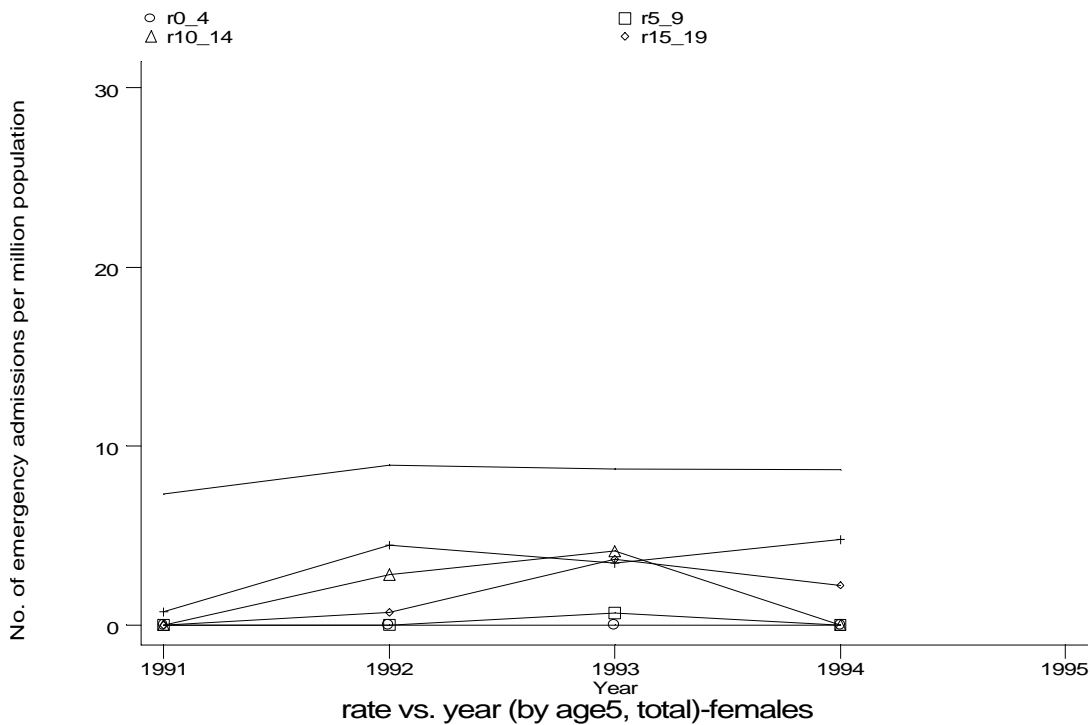
h1e8g3m.gph: MALES
8. Sarcoidosis



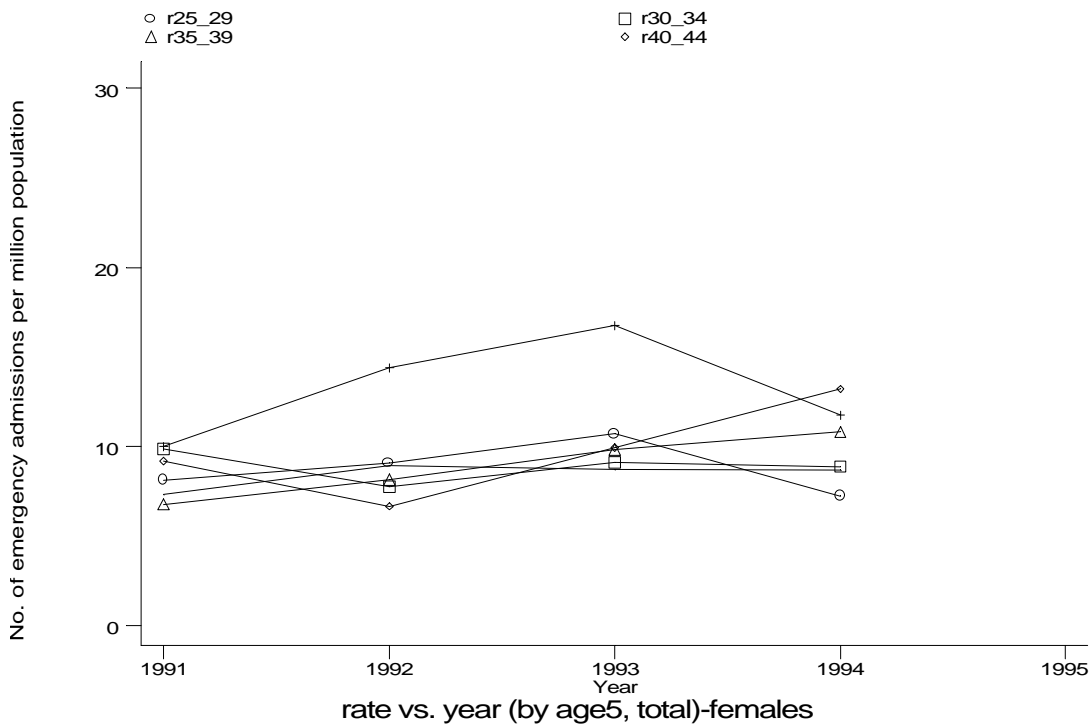
h1e8g4m.gph: MALES
8. Sarcoidosis

Age-sex distributions, yearly trends and cohort analysis (crude rates)

- HES Emergency admissions, England, April 1991-December 1994



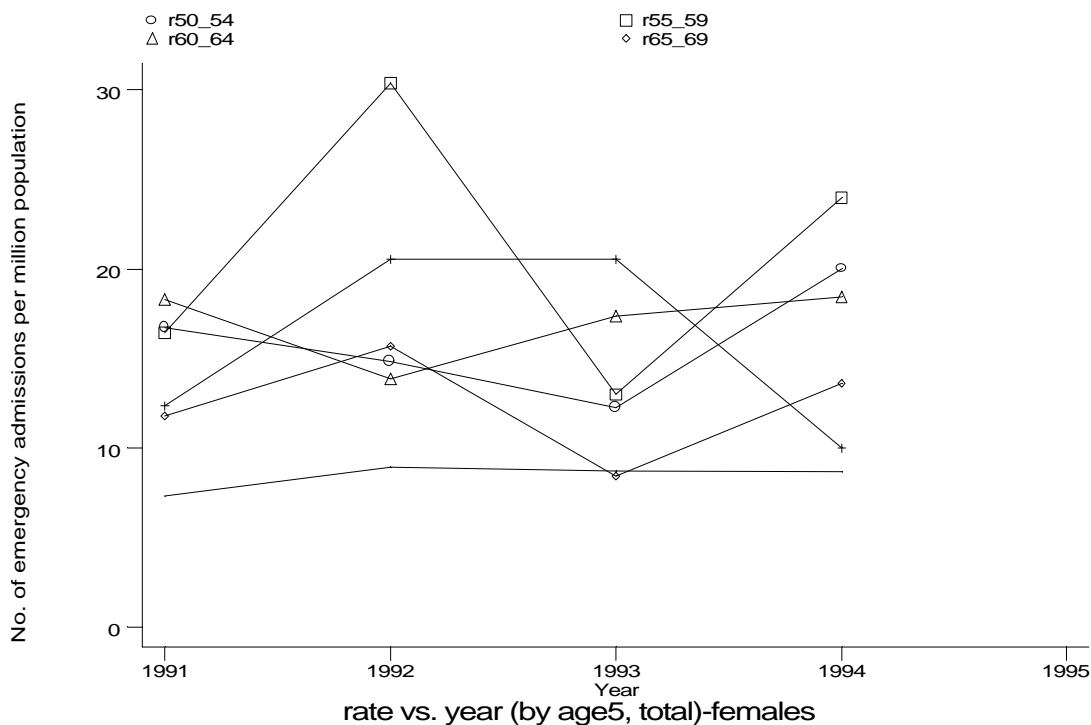
h1e8g1f.gph: FEMALES
8. Sarcoidosis



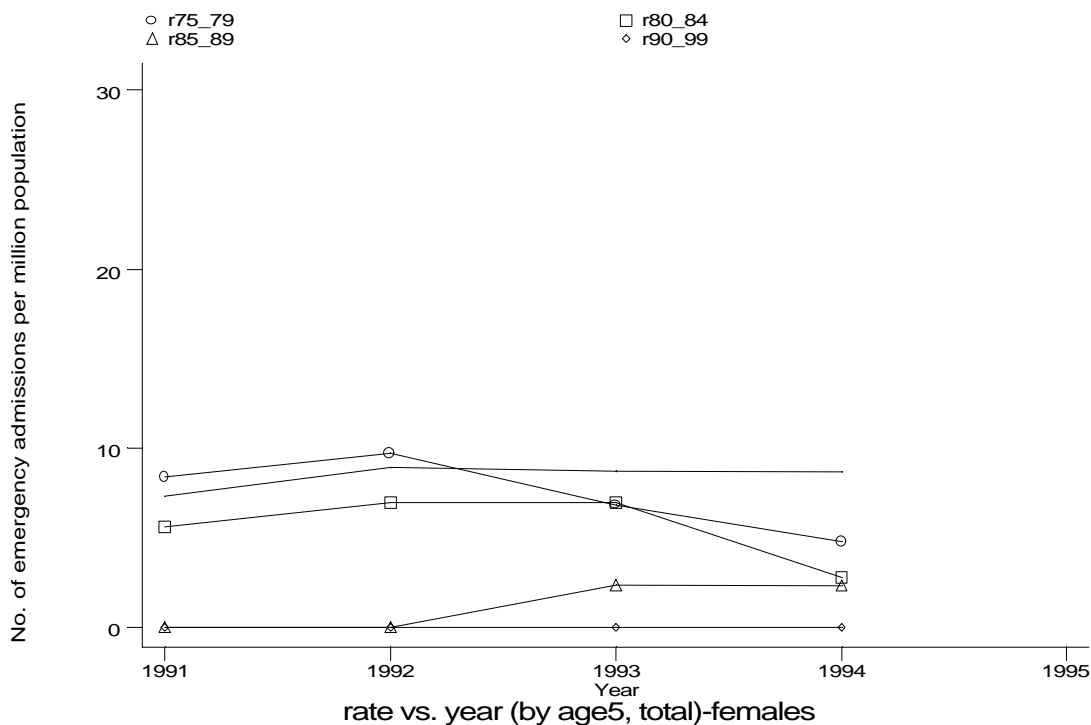
h1e8g2f.gph: FEMALES
8. Sarcoidosis

Age-sex distributions, yearly trends and cohort analysis (crude rates)

- HES Emergency admissions, England, April 1991-December 1994



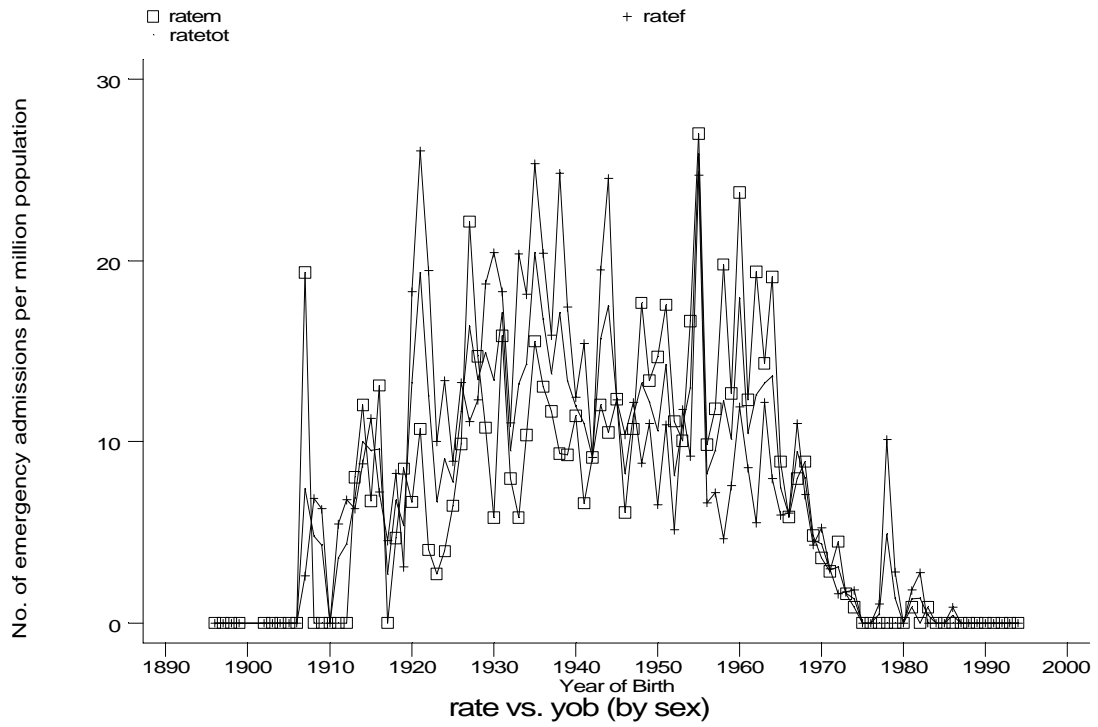
h1e893f.gph: FEMALES
8. Sarcoidosis



h1e894f.gph: FEMALES
8. Sarcoidosis

Age-sex distributions, yearly trends and cohort analysis (crude rates)

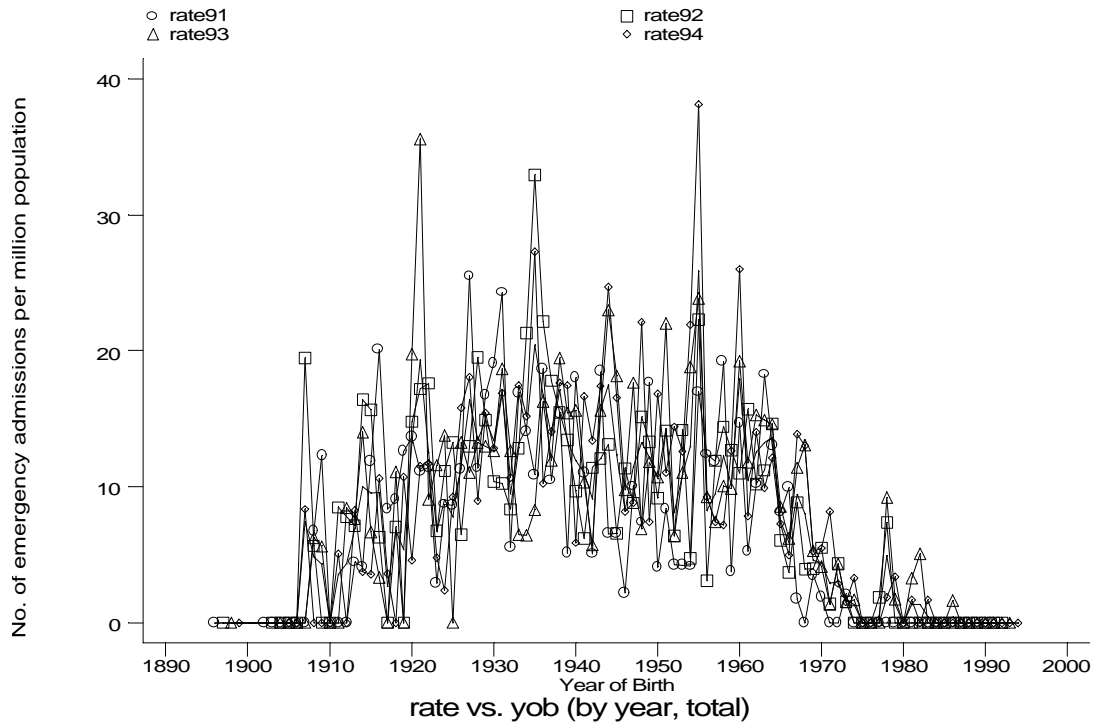
- HES Emergency admissions, England, April 1991-December 1994



h1e8h.gph
8. Sarcoidosis

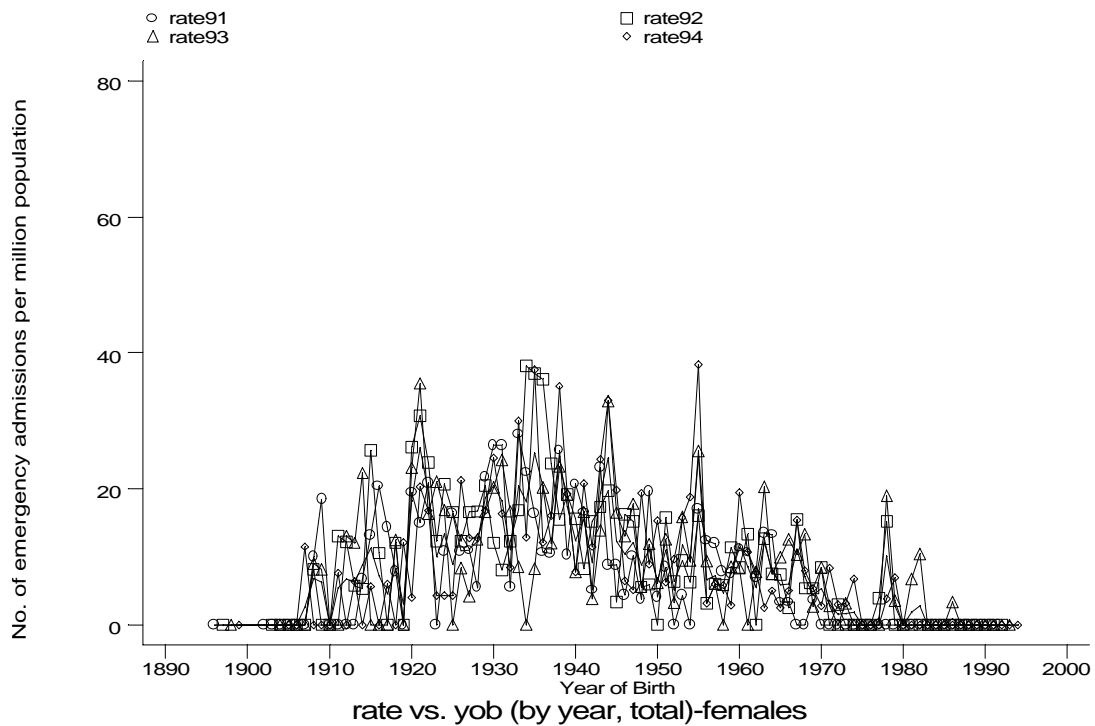
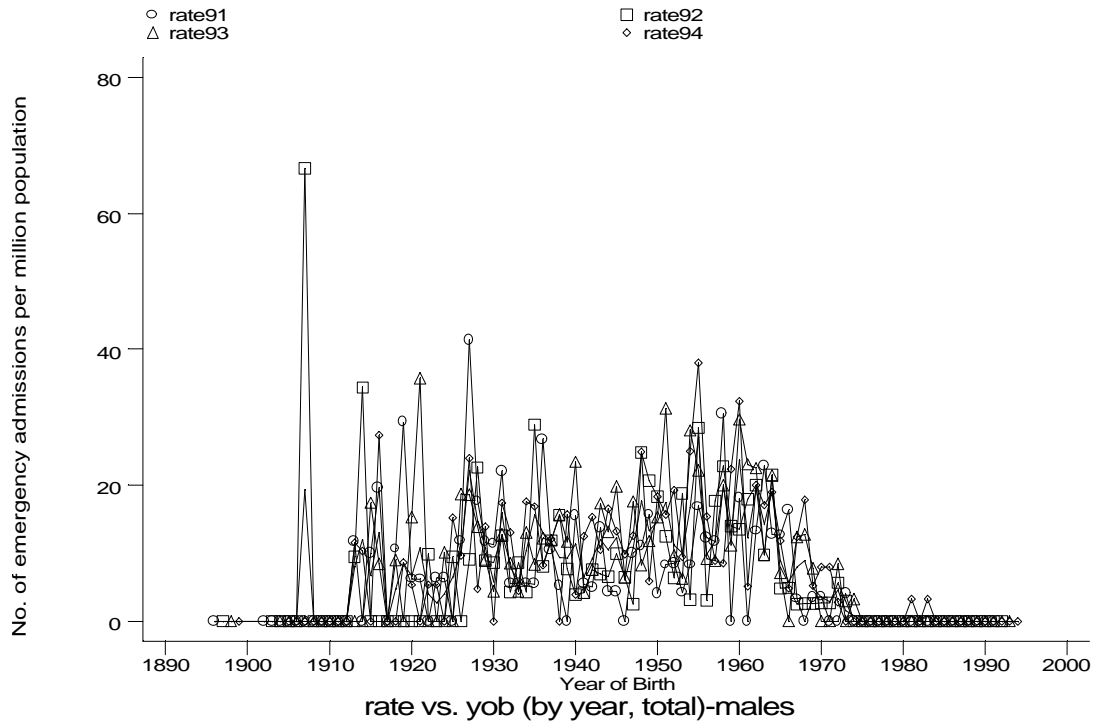
Age-sex distributions, yearly trends and cohort analysis (crude rates)

- HES Emergency admissions, England, April 1991-December 1994



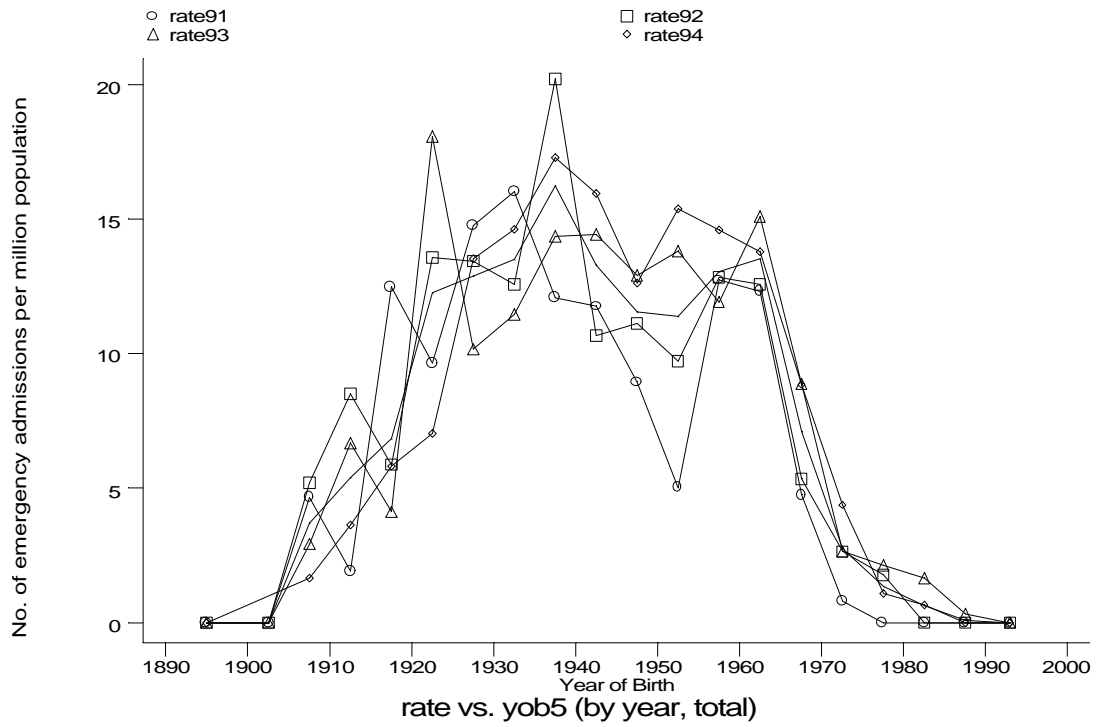
Age-sex distributions, yearly trends and cohort analysis (crude rates)

- HES Emergency admissions, England, April 1991-December 1994



Age-sex distributions, yearly trends and cohort analysis (crude rates)

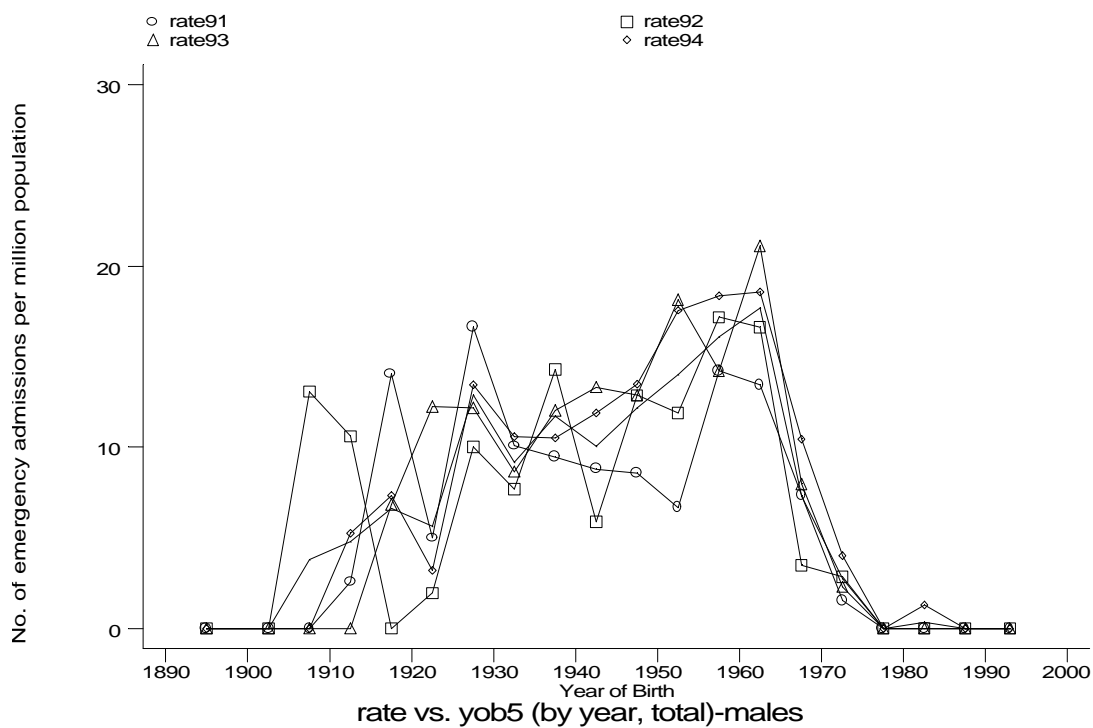
- HES Emergency admissions, England, April 1991-December 1994



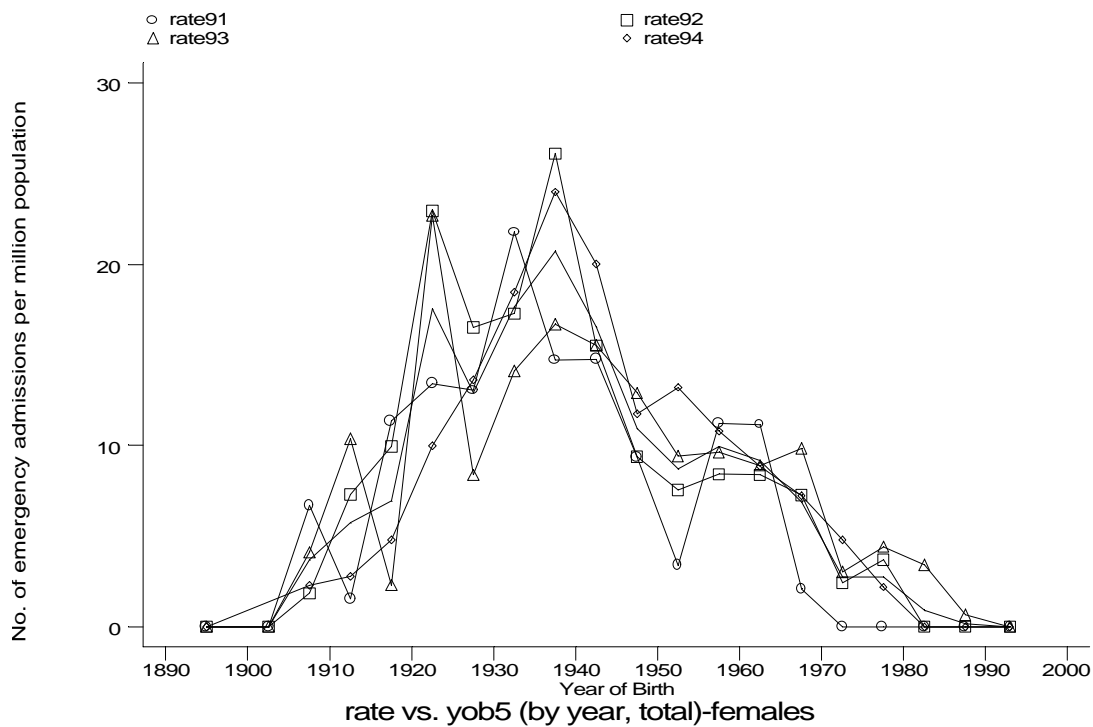
h1e8j1.gph
8. Sarcoidosis

Age-sex distributions, yearly trends and cohort analysis (crude rates)

- HES Emergency admissions, England, April 1991-December 1994



h1e8j1m.gph: MALES
8. Sarcoidosis



h1e8j1f.gph: FEMALES
8. Sarcoidosis