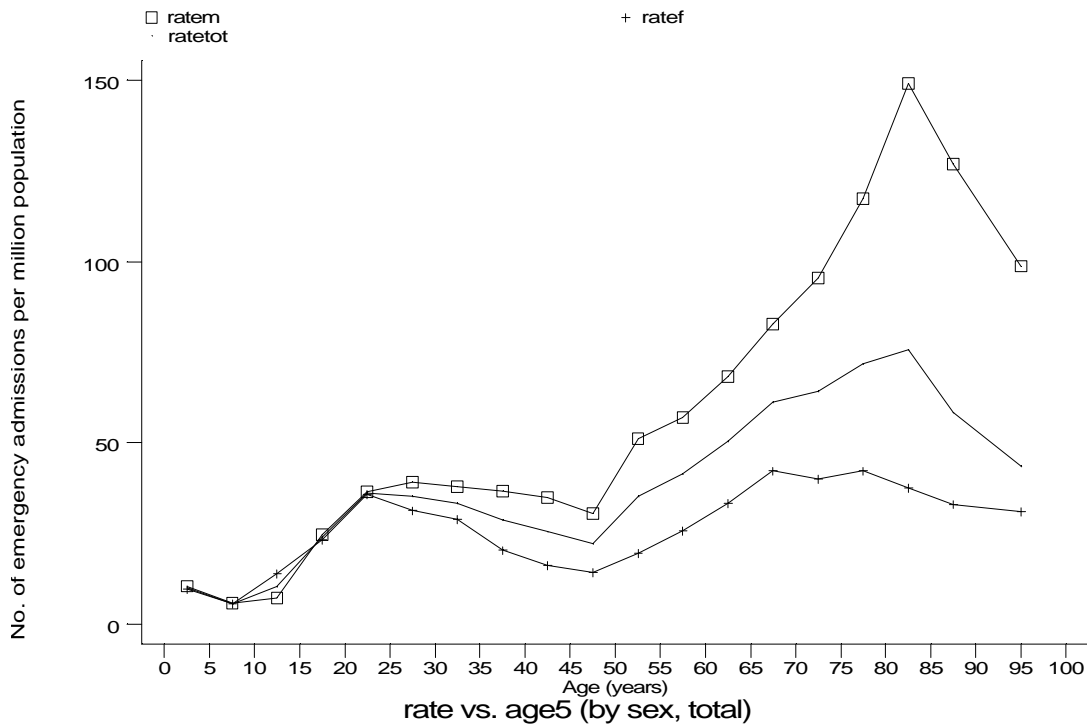
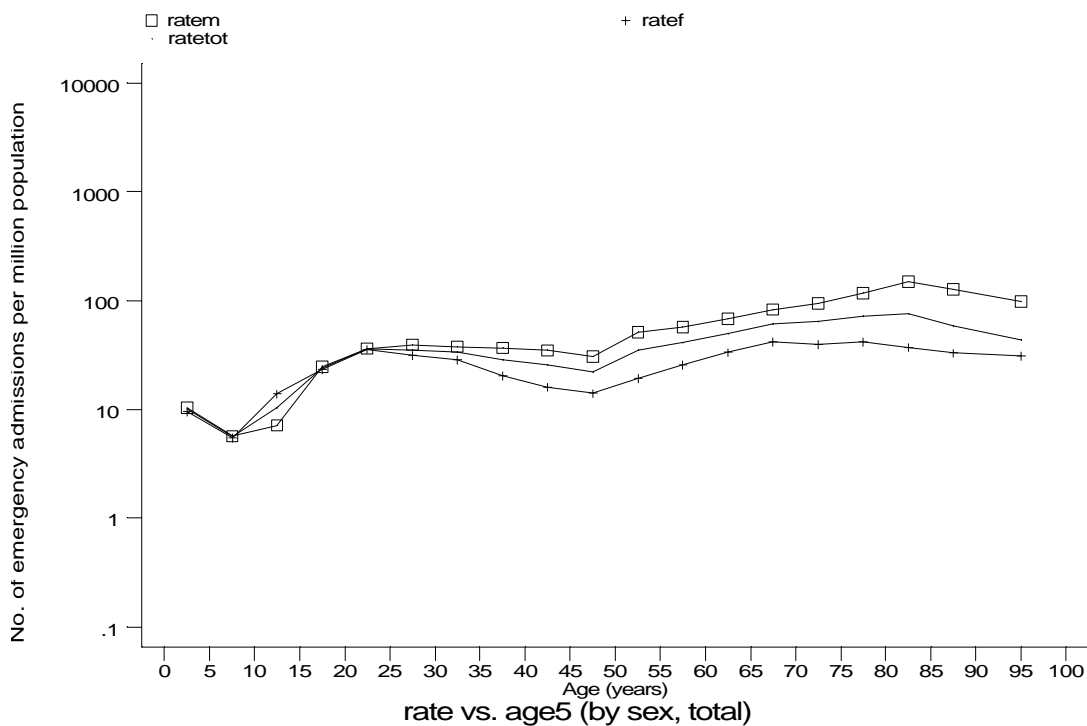


Age-sex distributions, yearly trends and cohort analysis (crude rates)

- HES Emergency admissions, England, April 1991-December 1994



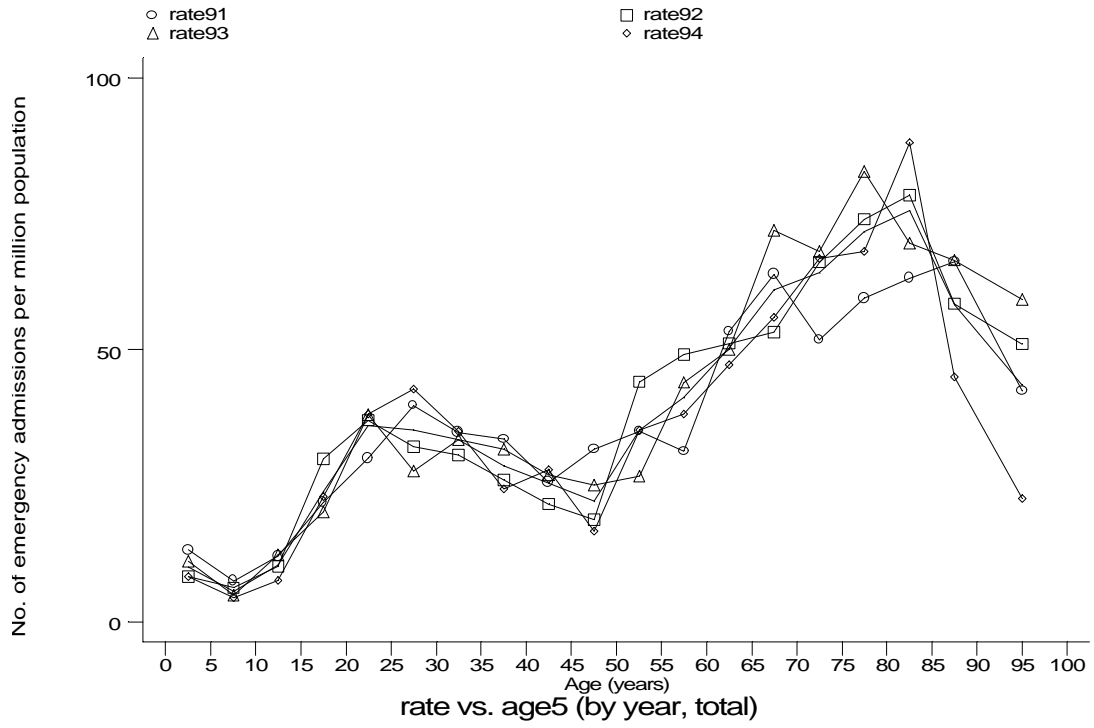
h1e6a1.gph
6. Respiratory tuberculosis



h1e6a2.gph
6. Respiratory tuberculosis

Age-sex distributions, yearly trends and cohort analysis (crude rates)

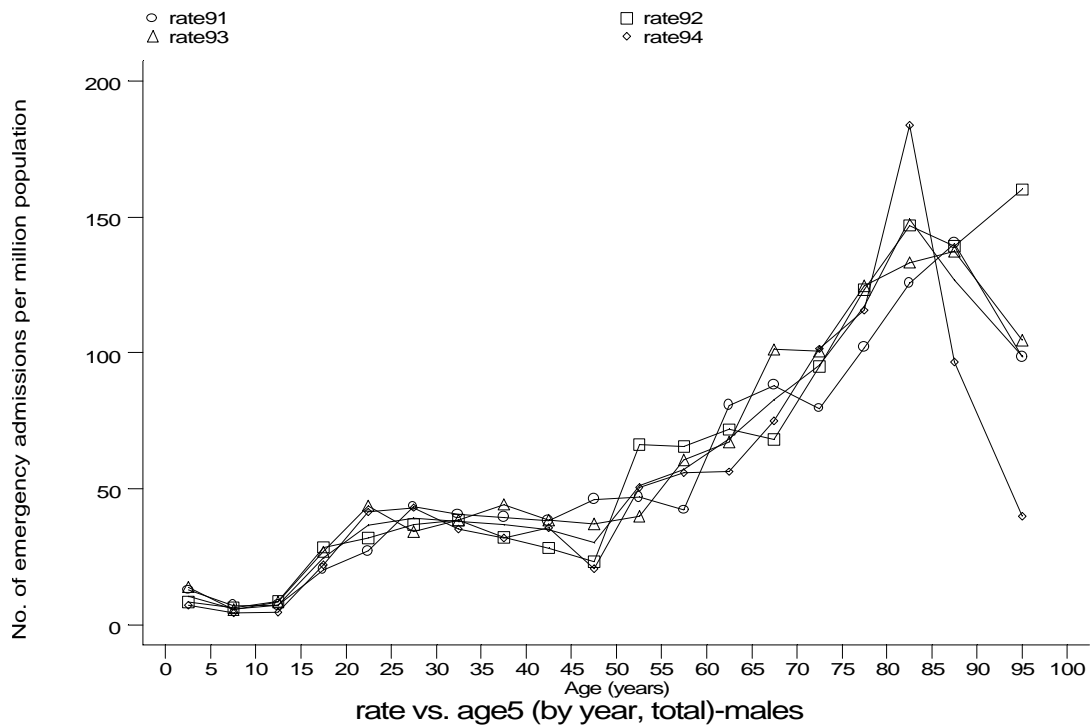
- HES Emergency admissions, England, April 1991-December 1994



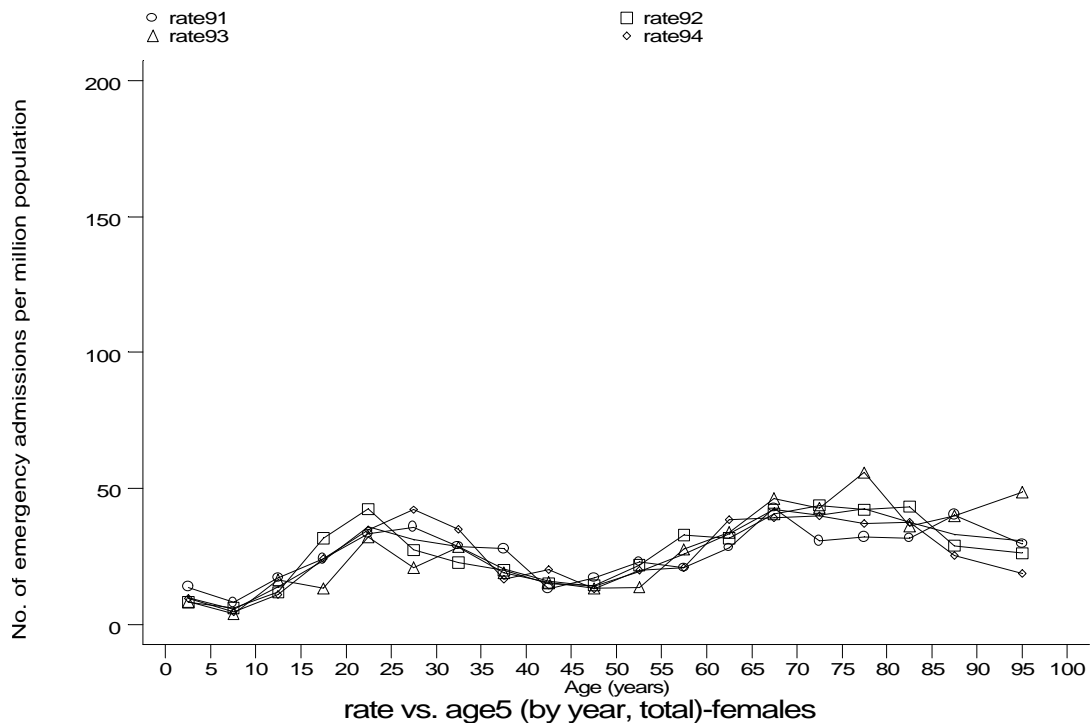
h1e6b1.gph
6. Respiratory tuberculosis

Age-sex distributions, yearly trends and cohort analysis (crude rates)

- HES Emergency admissions, England, April 1991-December 1994



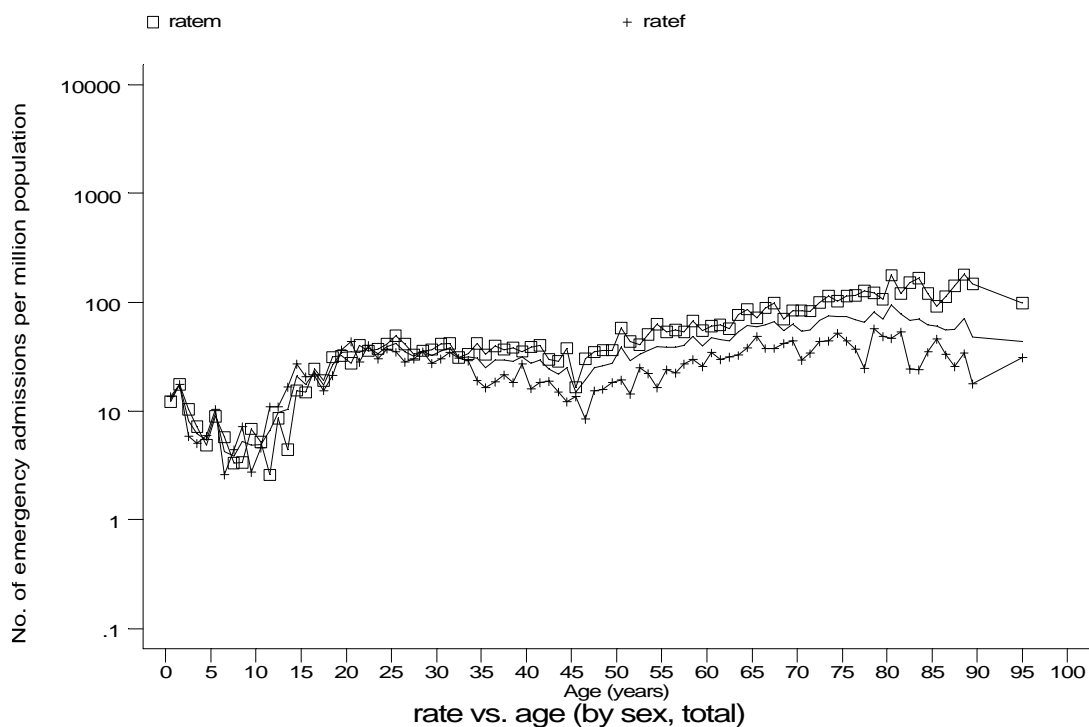
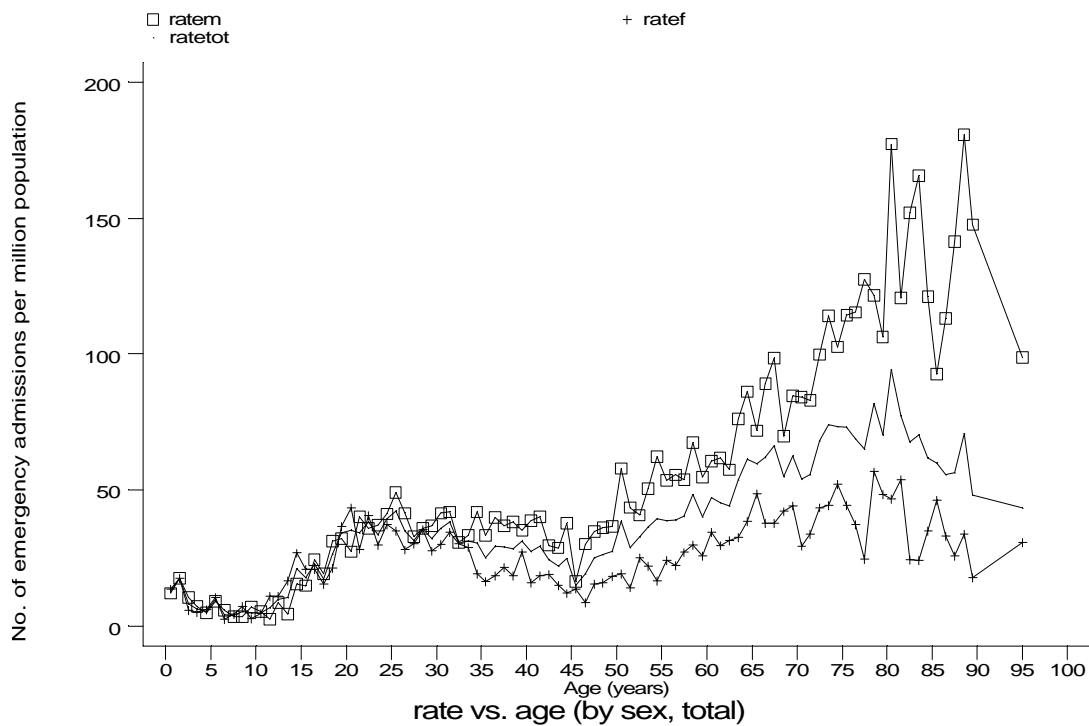
h1e6b1m.gph: MALES
6. Respiratory tuberculosis



h1e6b1f.gph: FEMALES
6. Respiratory tuberculosis

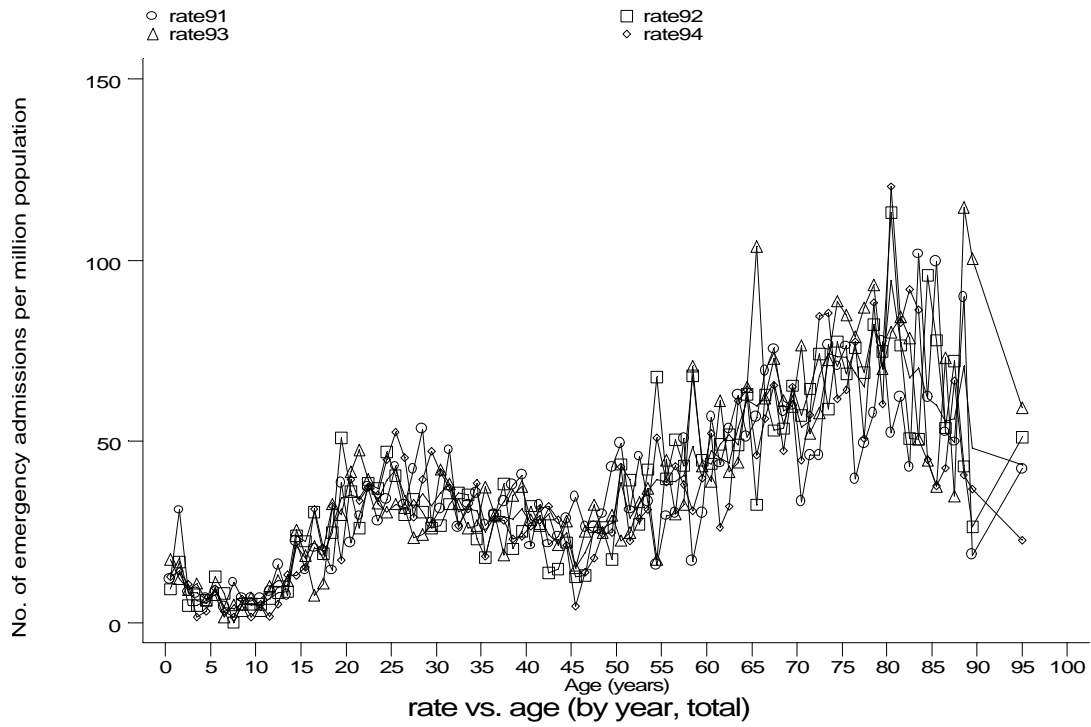
Age-sex distributions, yearly trends and cohort analysis (crude rates)

- HES Emergency admissions, England, April 1991-December 1994



Age-sex distributions, yearly trends and cohort analysis (crude rates)

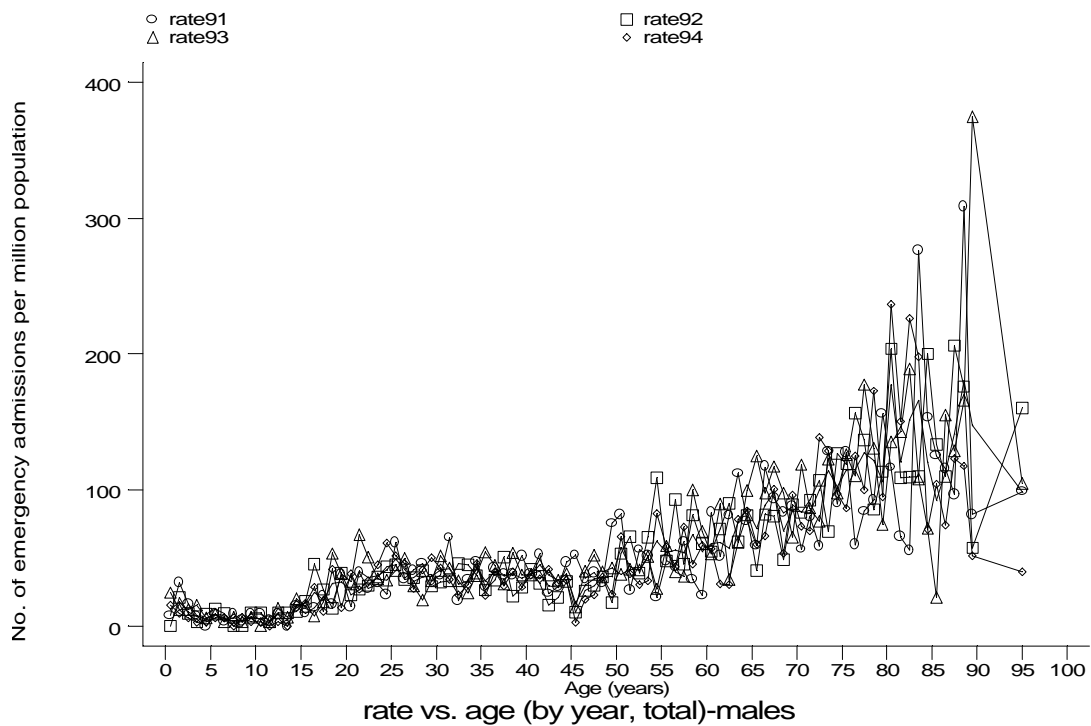
- HES Emergency admissions, England, April 1991-December 1994



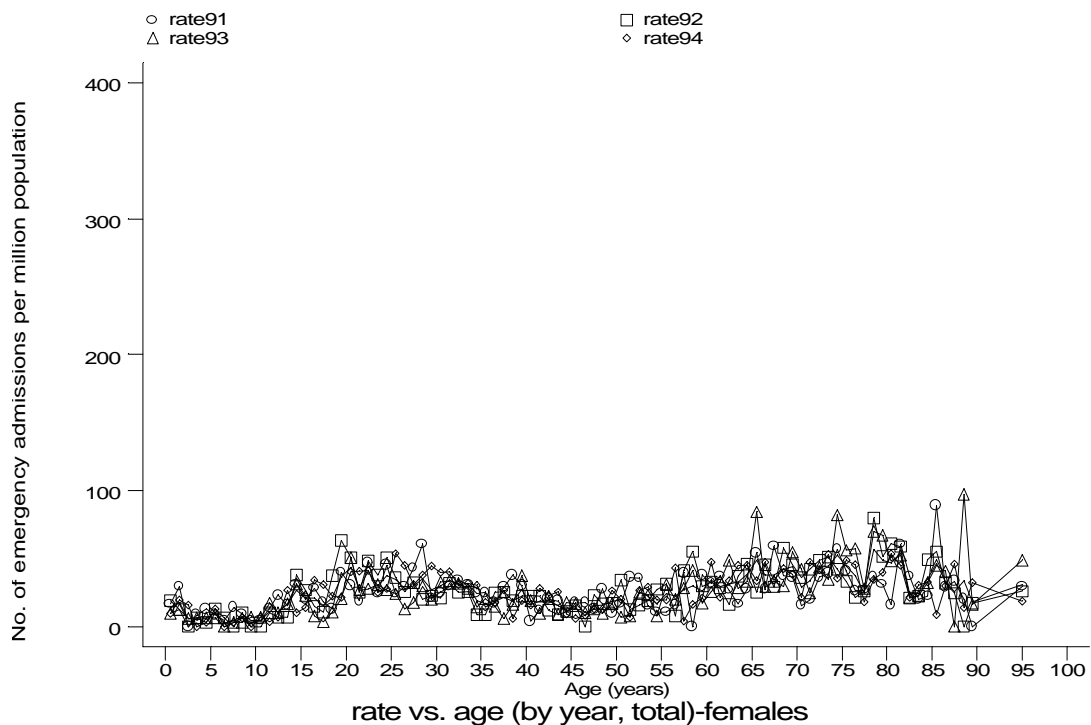
h1e6d1.gph
6. Respiratory tuberculosis

Age-sex distributions, yearly trends and cohort analysis (crude rates)

- HES Emergency admissions, England, April 1991-December 1994



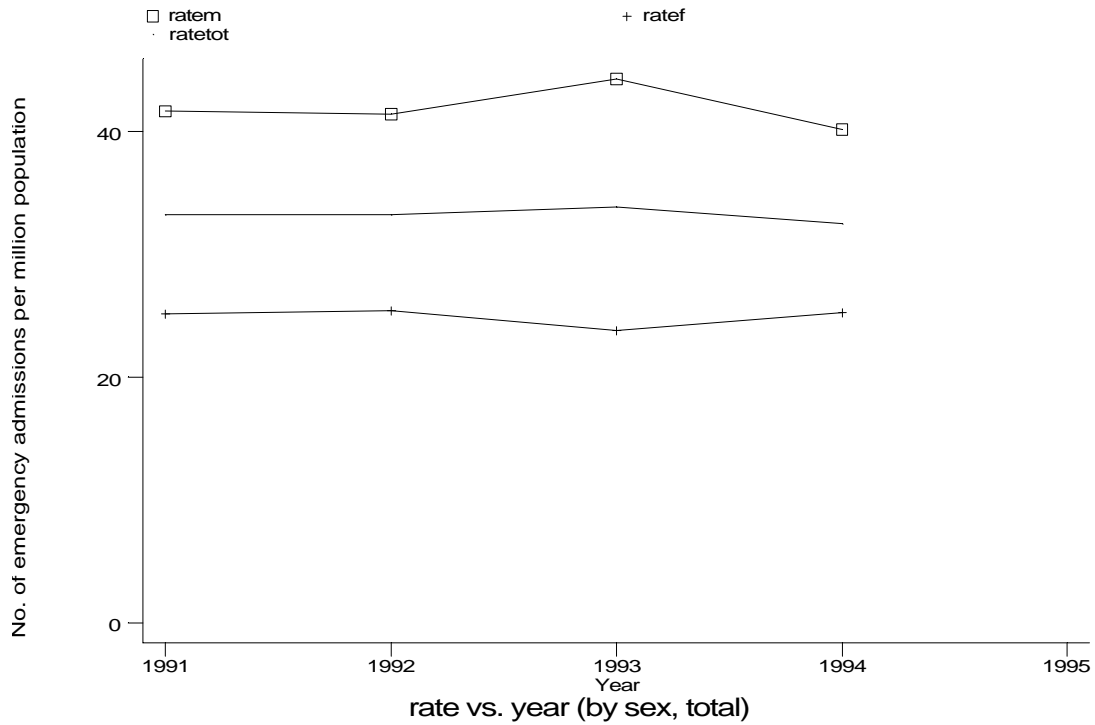
h:1e6d1m.gph: MALES
6. Respiratory tuberculosis



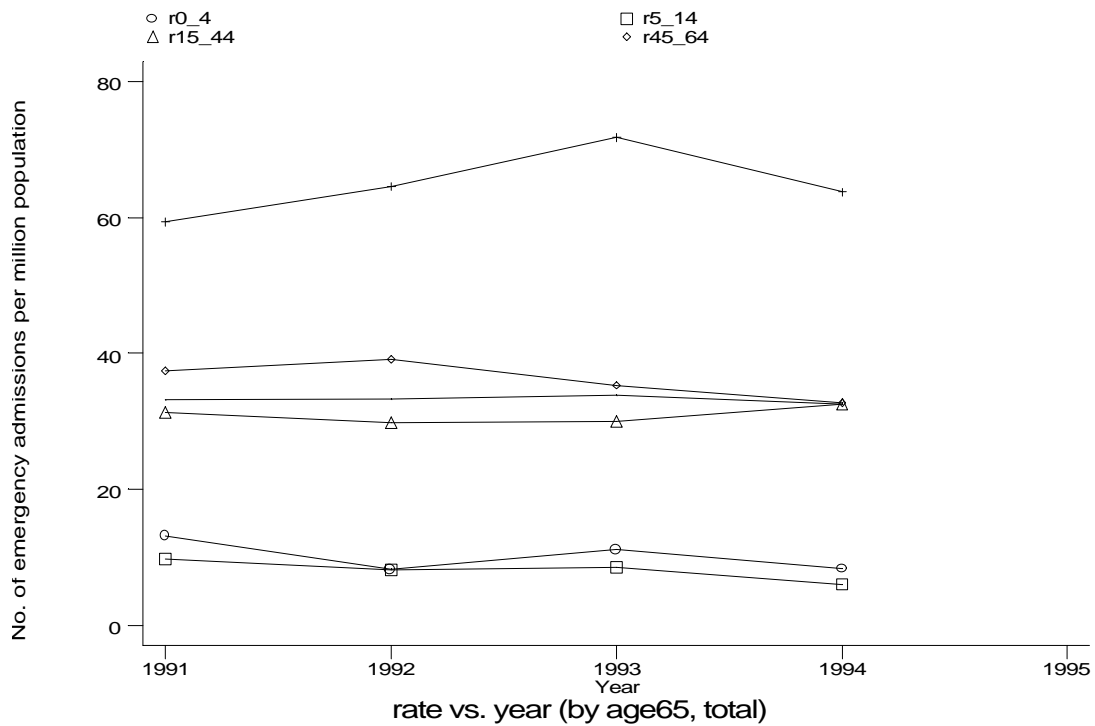
h:1e6d1f.gph: FEMALES
6. Respiratory tuberculosis

Age-sex distributions, yearly trends and cohort analysis (crude rates)

- HES Emergency admissions, England, April 1991-December 1994



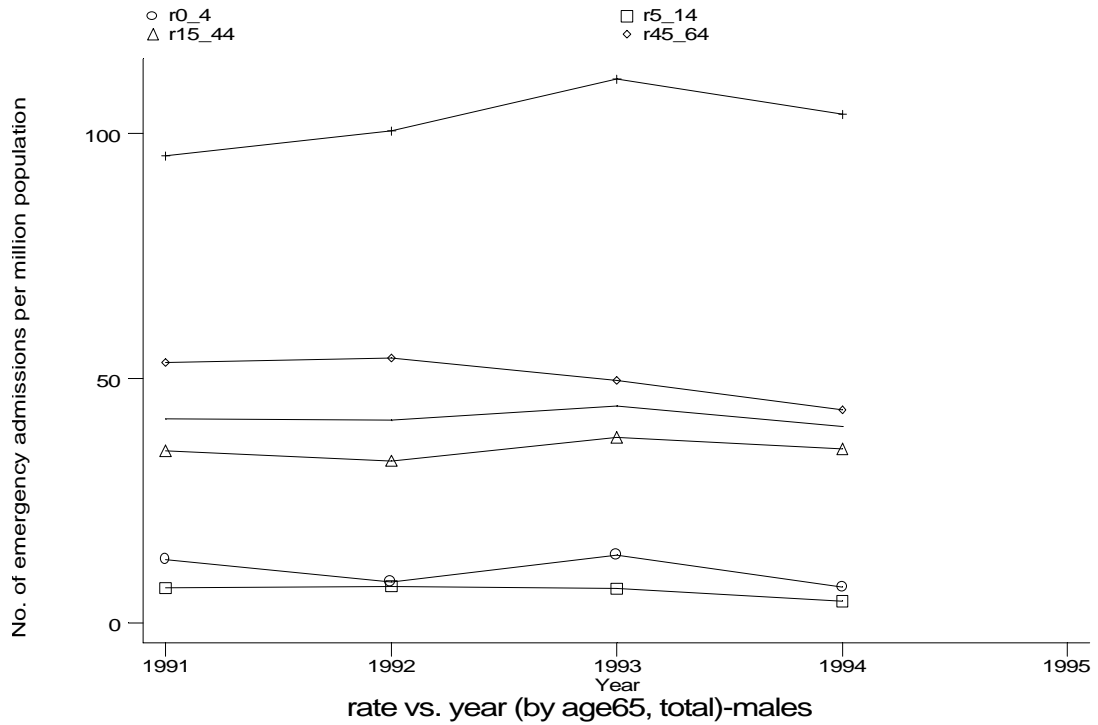
h1e6e.gph
6. Respiratory tuberculosis



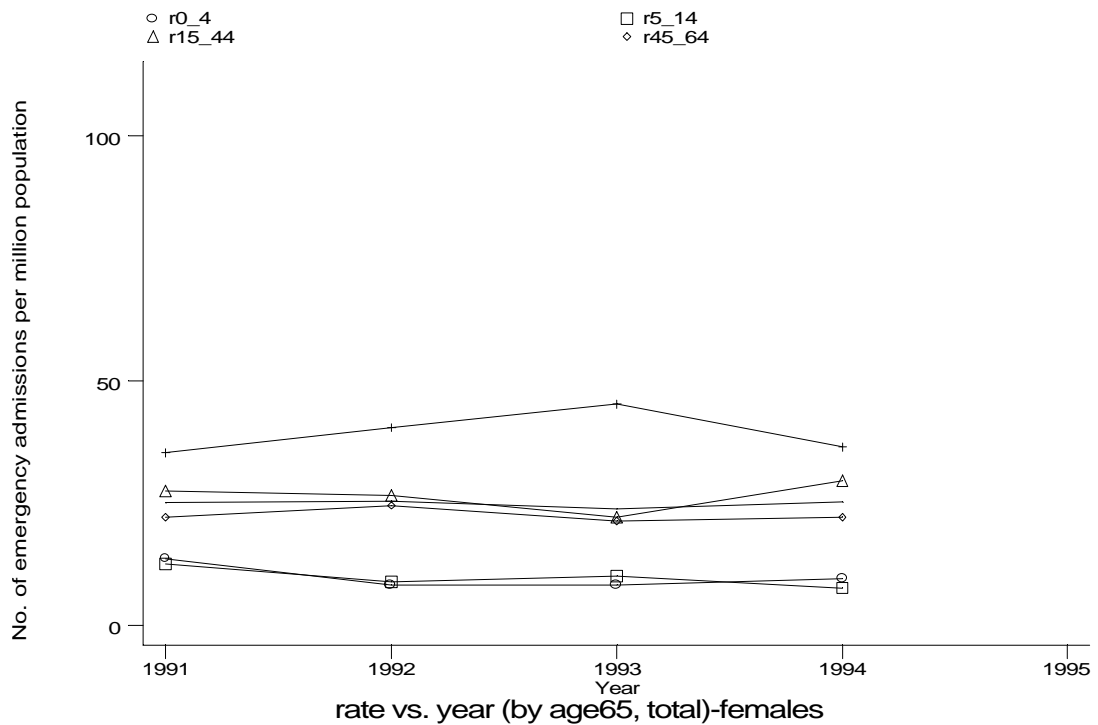
h1e6f.gph
6. Respiratory tuberculosis

Age-sex distributions, yearly trends and cohort analysis (crude rates)

- HES Emergency admissions, England, April 1991-December 1994



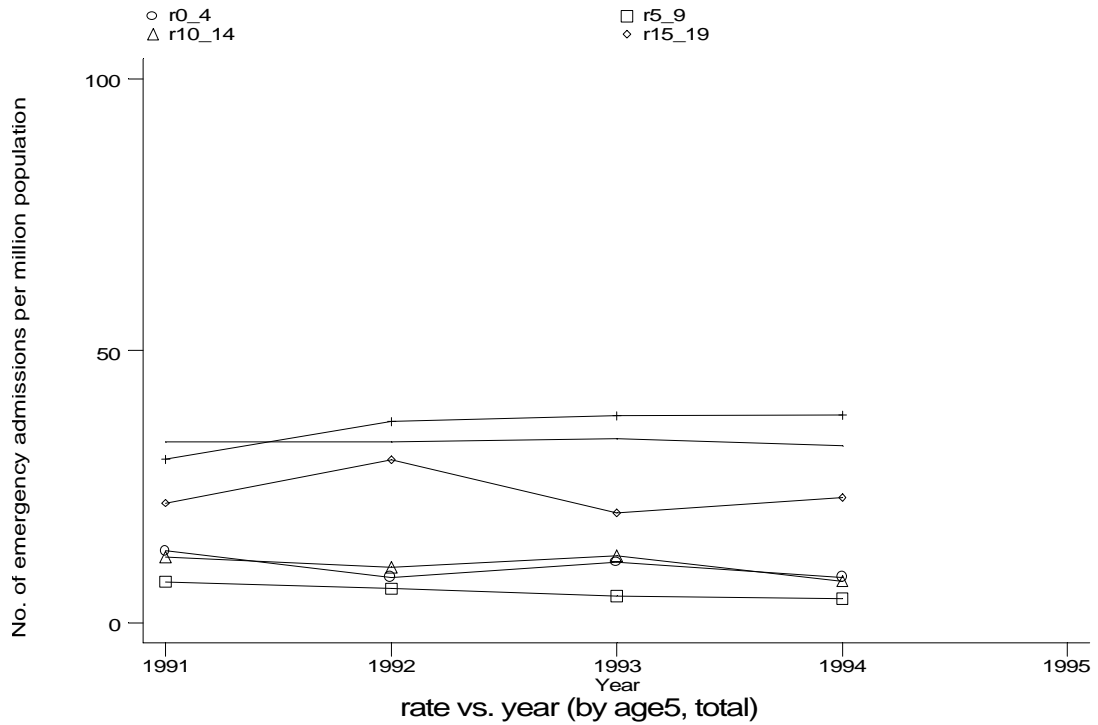
h1e6fm.gph: MALES
6. Respiratory tuberculosis



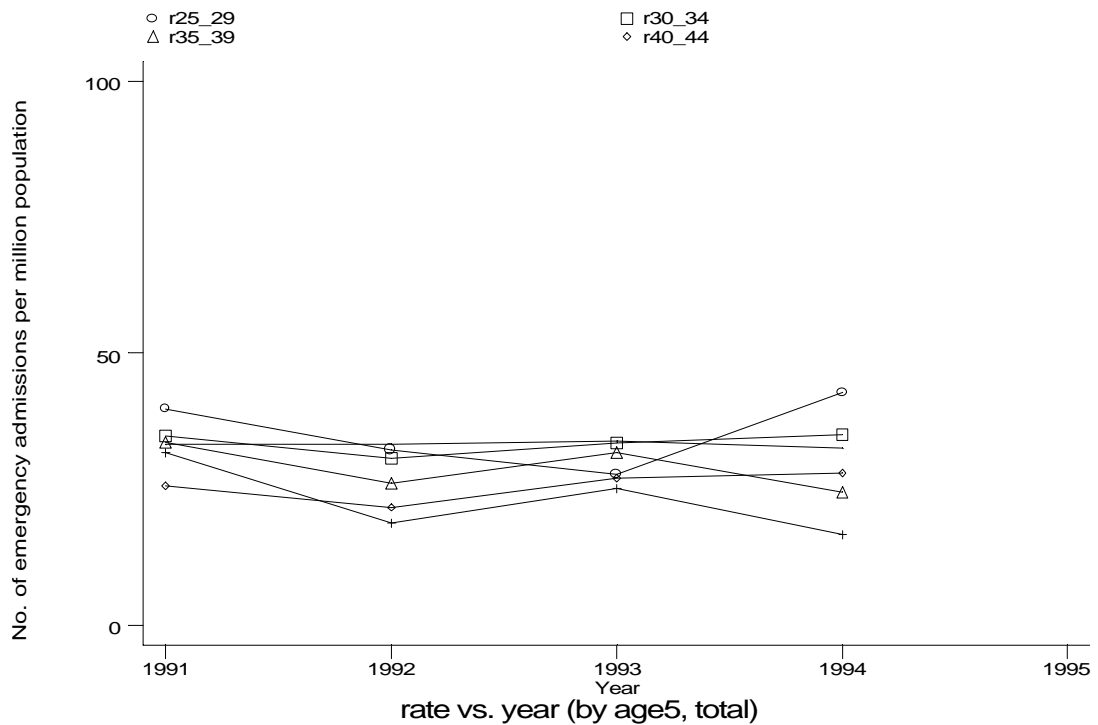
h1e6ff.gph: FEMALES
6. Respiratory tuberculosis

Age-sex distributions, yearly trends and cohort analysis (crude rates)

- HES Emergency admissions, England, April 1991-December 1994



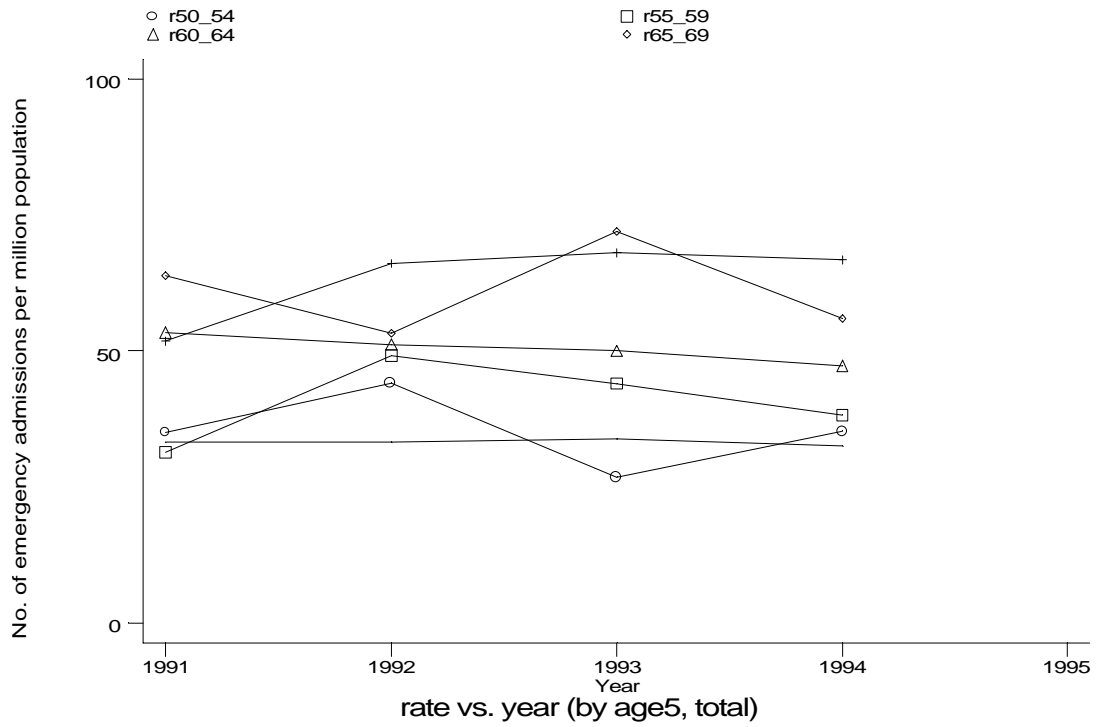
h1e6g1.gph
6. Respiratory tuberculosis



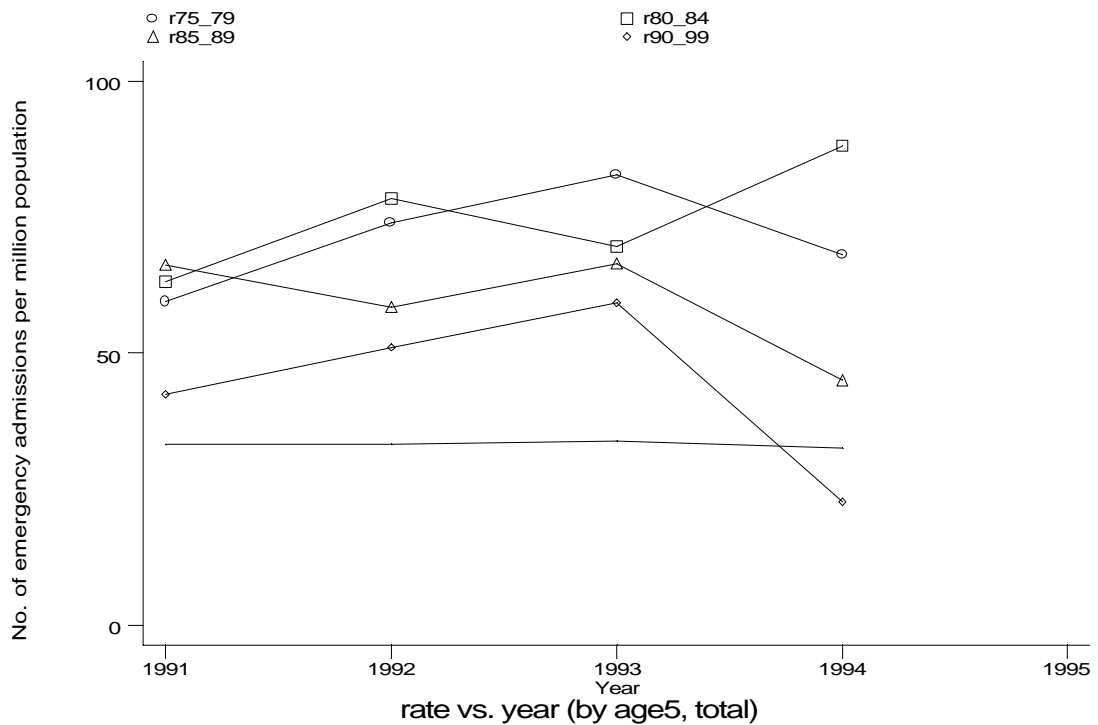
h1e6g2.gph
6. Respiratory tuberculosis

Age-sex distributions, yearly trends and cohort analysis (crude rates)

- HES Emergency admissions, England, April 1991-December 1994



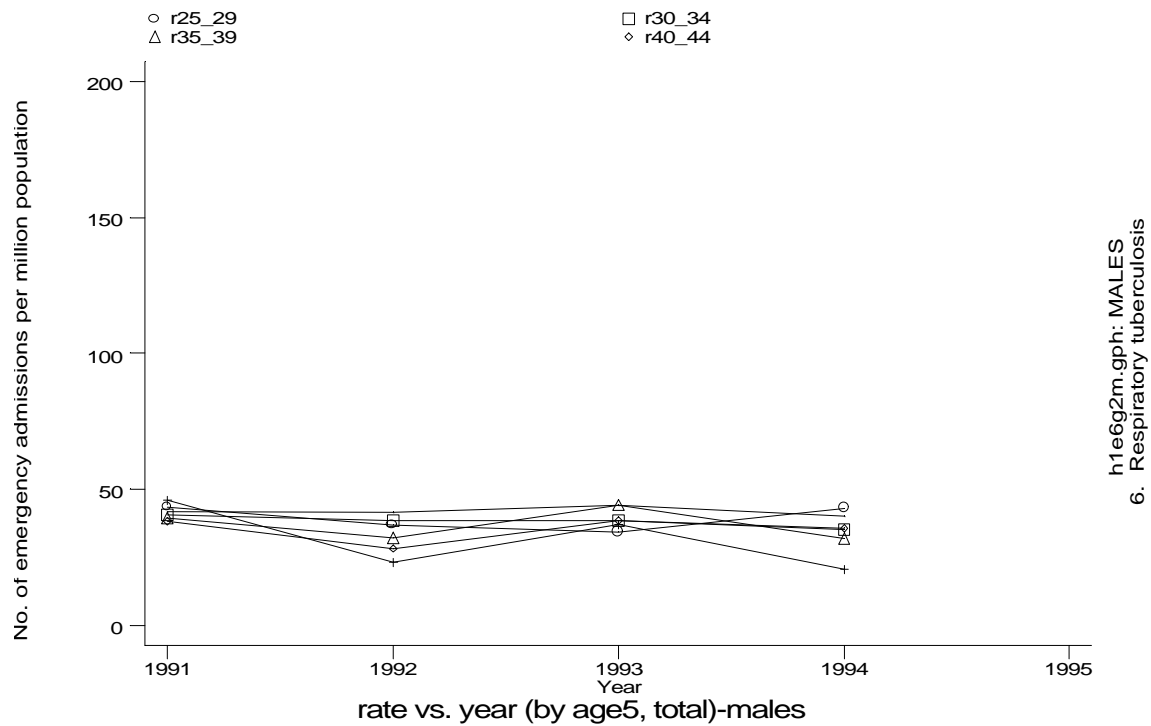
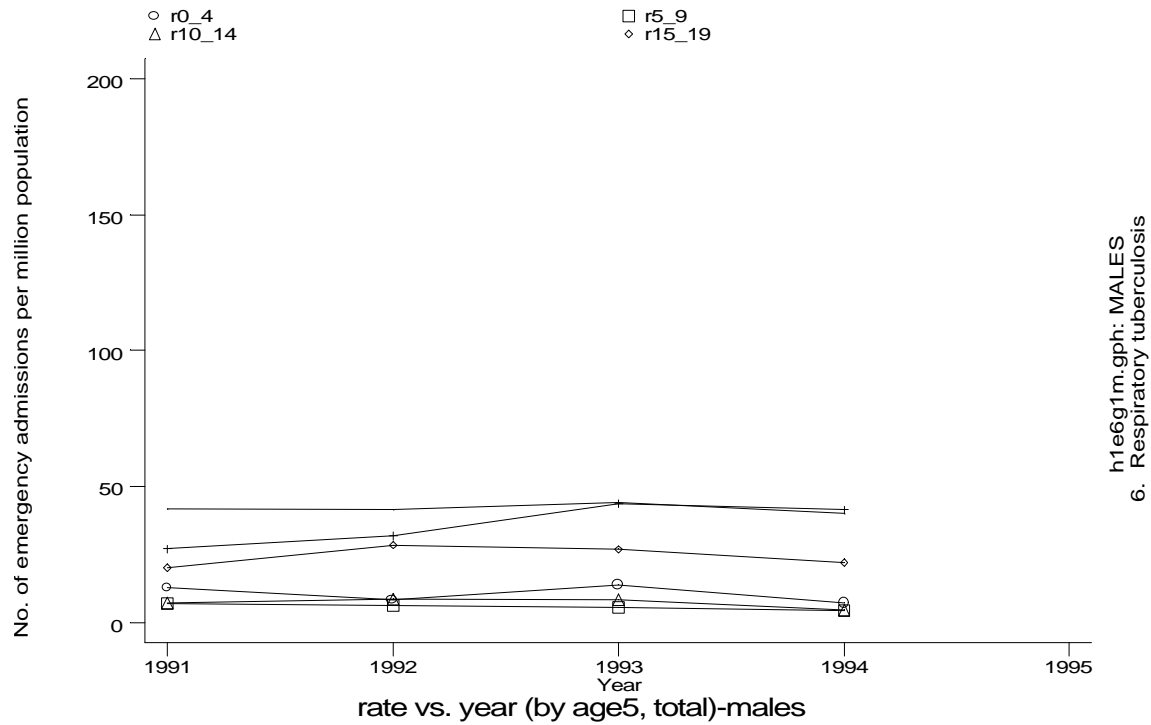
h1e6g3.gph
6. Respiratory tuberculosis



h1e6g4.gph
6. Respiratory tuberculosis

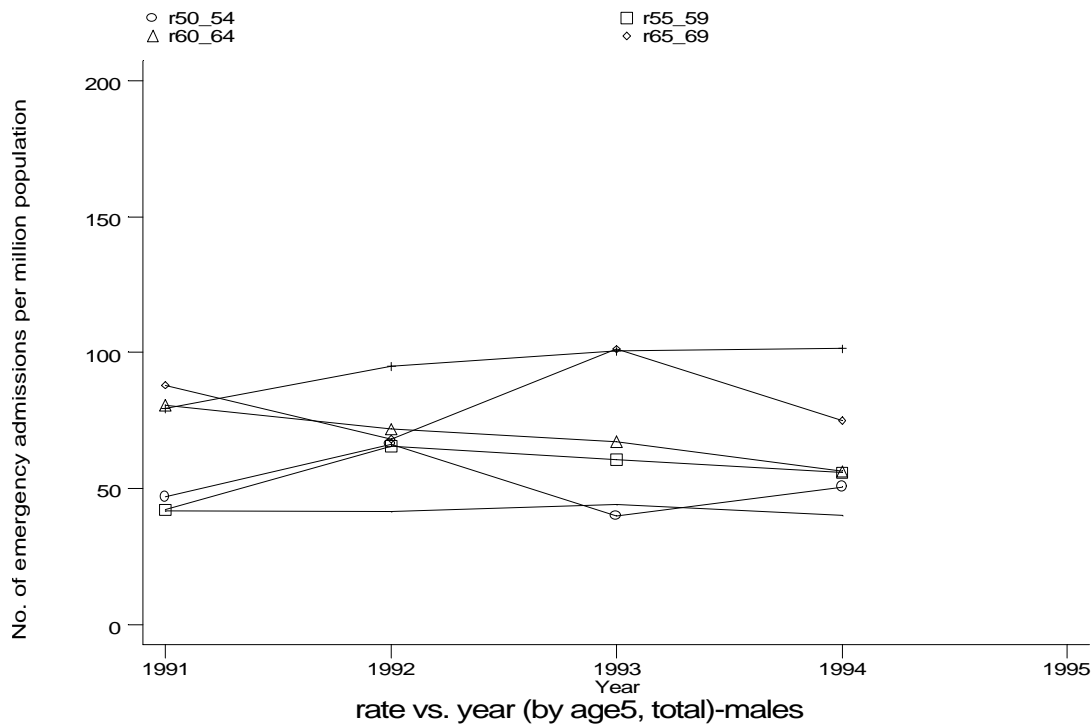
Age-sex distributions, yearly trends and cohort analysis (crude rates)

- HES Emergency admissions, England, April 1991-December 1994

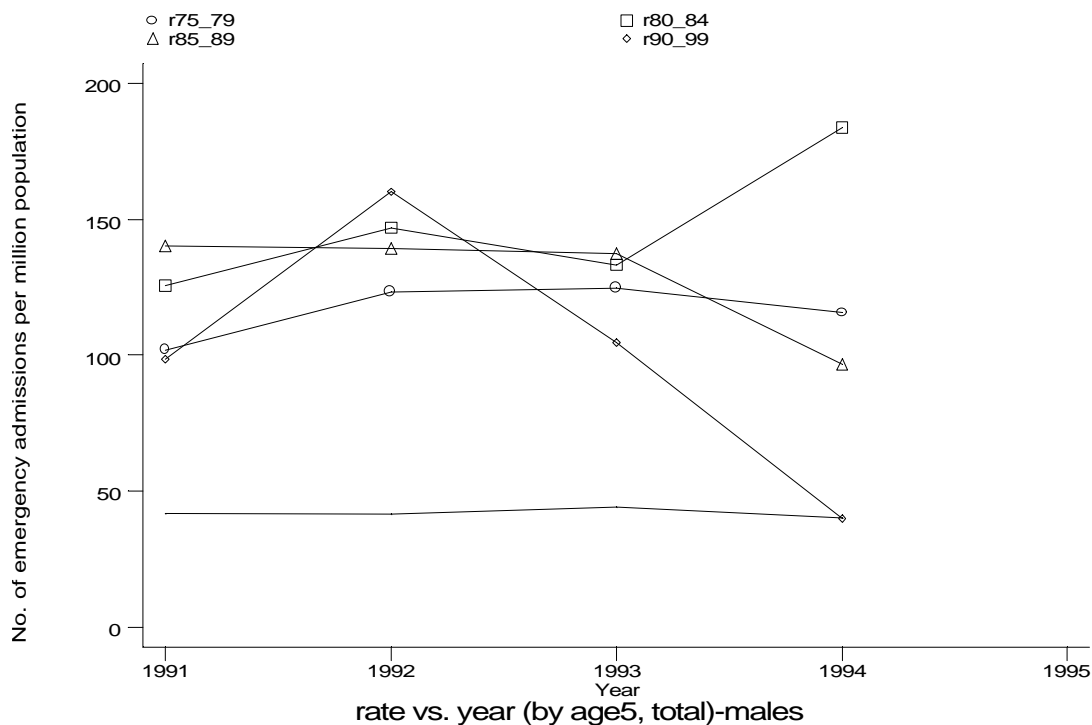


Age-sex distributions, yearly trends and cohort analysis (crude rates)

- HES Emergency admissions, England, April 1991-December 1994



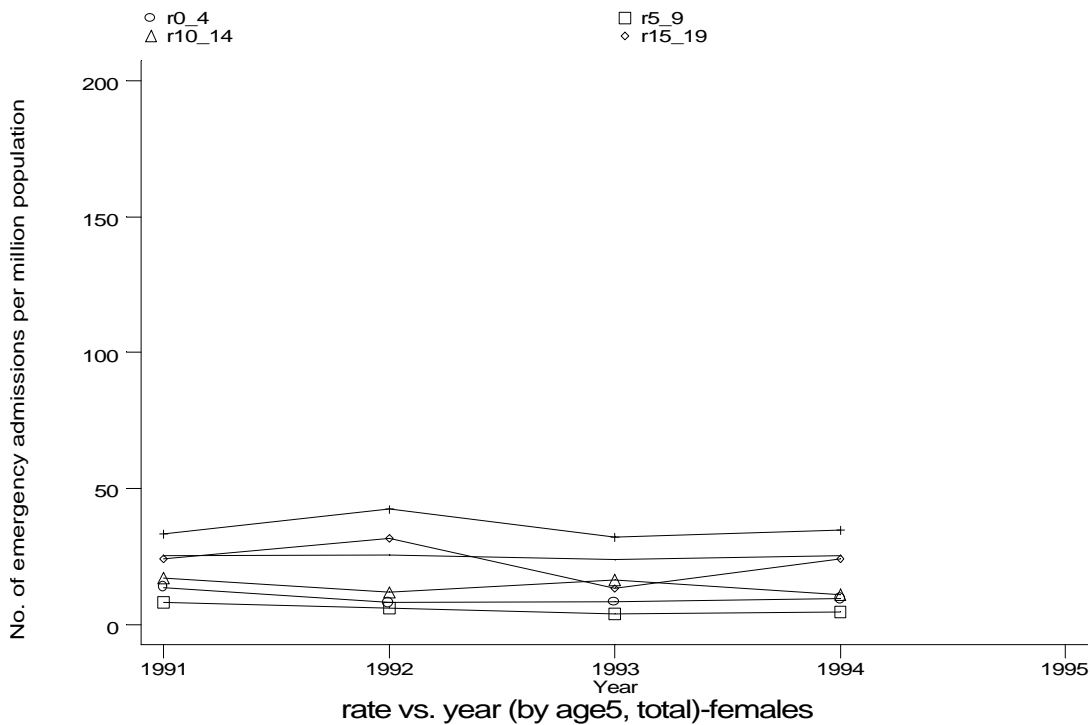
h1e6g3m.gph: MALES
6. Respiratory tuberculosis



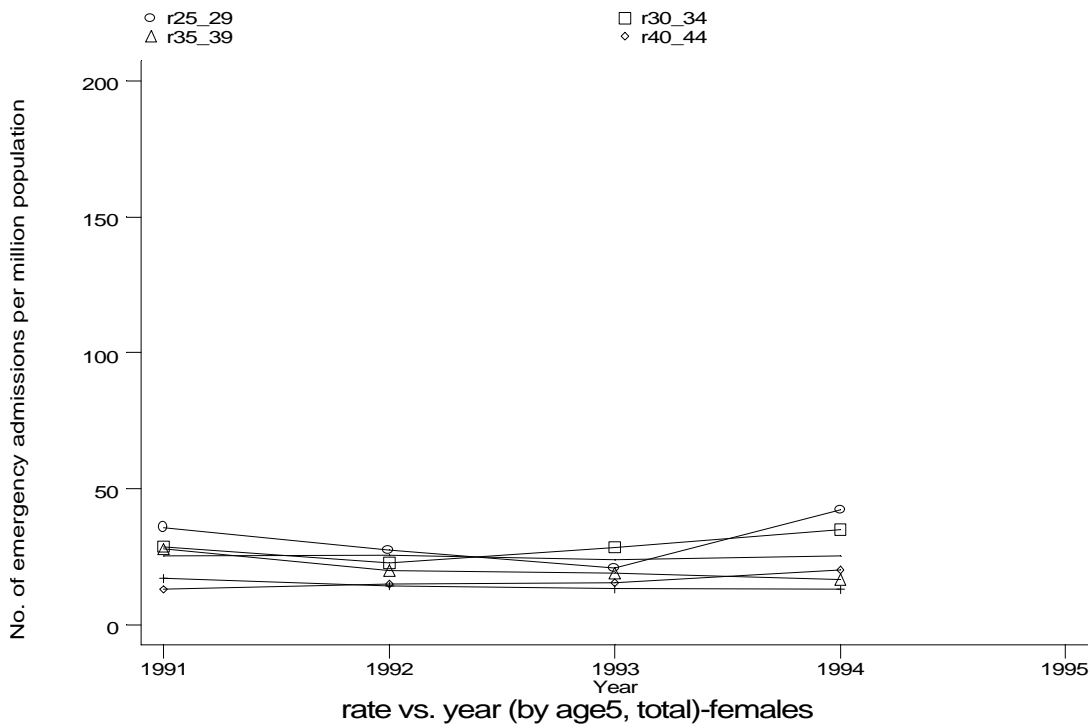
h1e6g4m.gph: MALES
6. Respiratory tuberculosis

Age-sex distributions, yearly trends and cohort analysis (crude rates)

- HES Emergency admissions, England, April 1991-December 1994



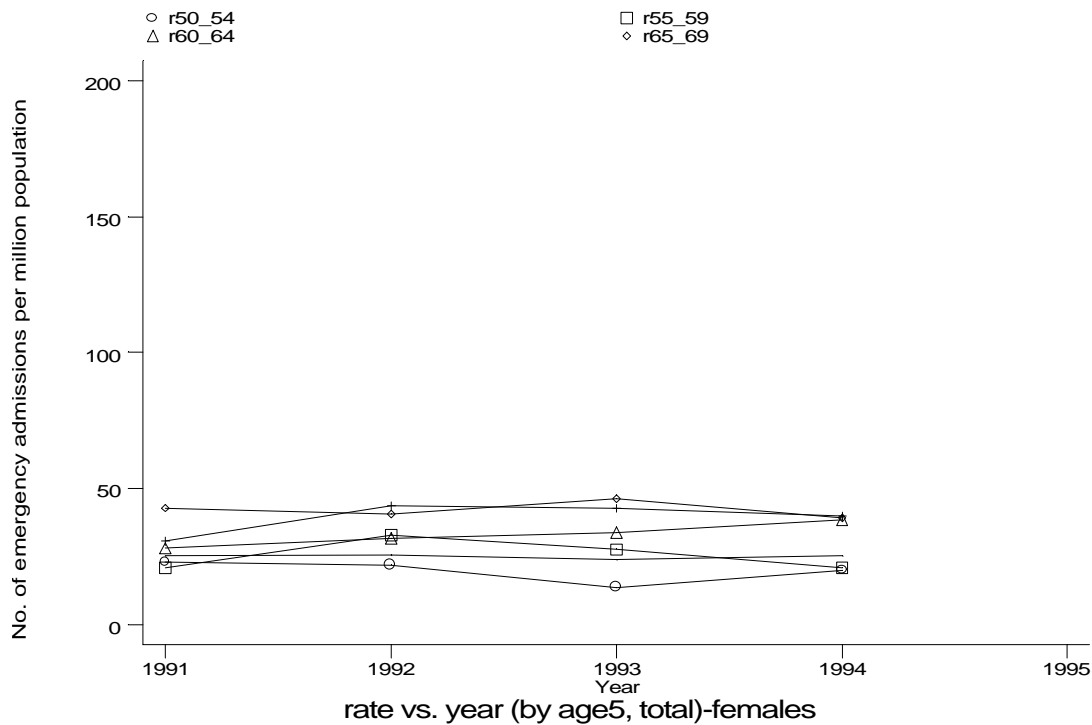
h1e6g1f.gph: FEMALES
6. Respiratory tuberculosis



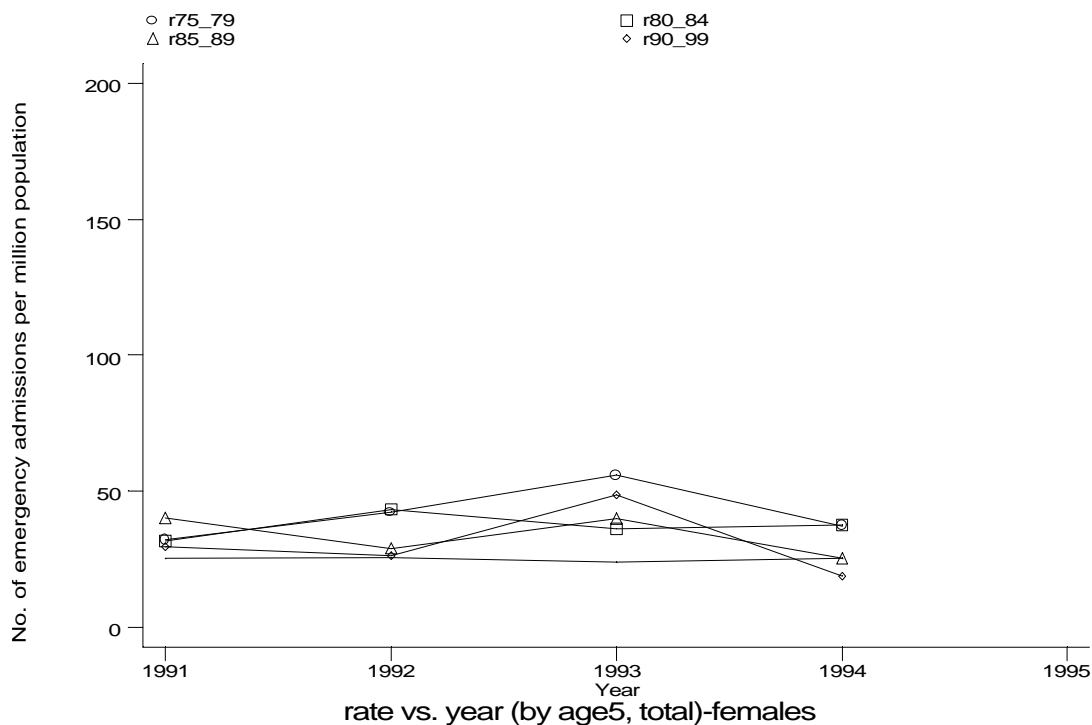
h1e6g2f.gph: FEMALES
6. Respiratory tuberculosis

Age-sex distributions, yearly trends and cohort analysis (crude rates)

- HES Emergency admissions, England, April 1991-December 1994



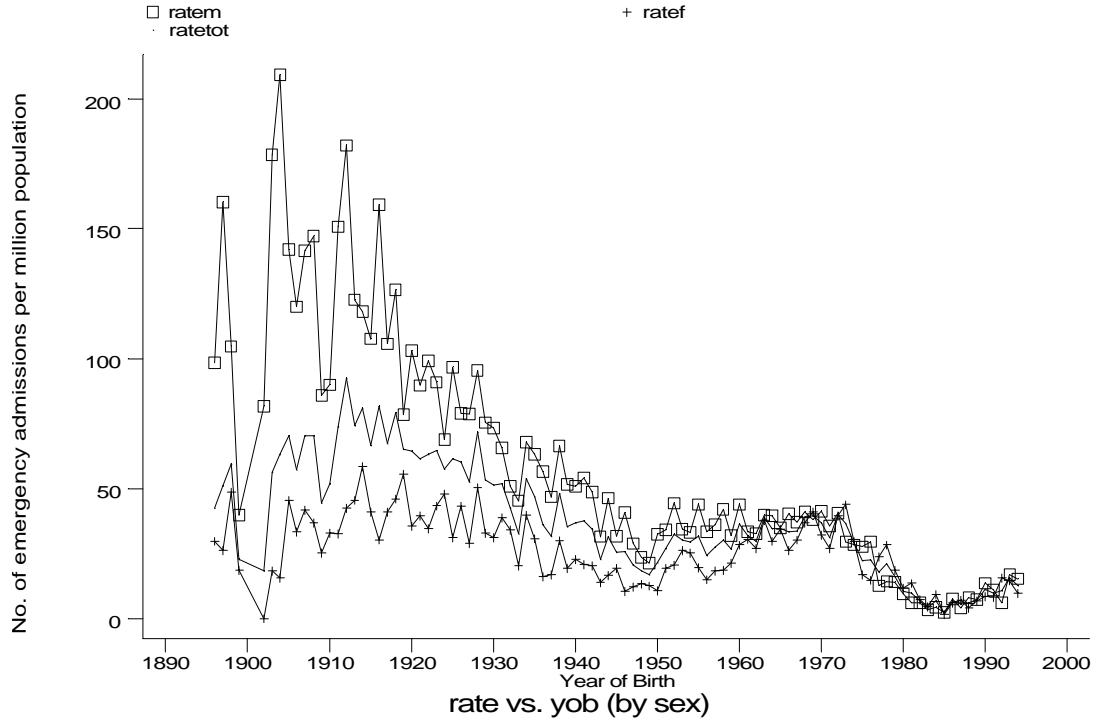
h1e6g3f.gph: FEMALES
6. Respiratory tuberculosis



h1e6g4f.gph: FEMALES
6. Respiratory tuberculosis

Age-sex distributions, yearly trends and cohort analysis (crude rates)

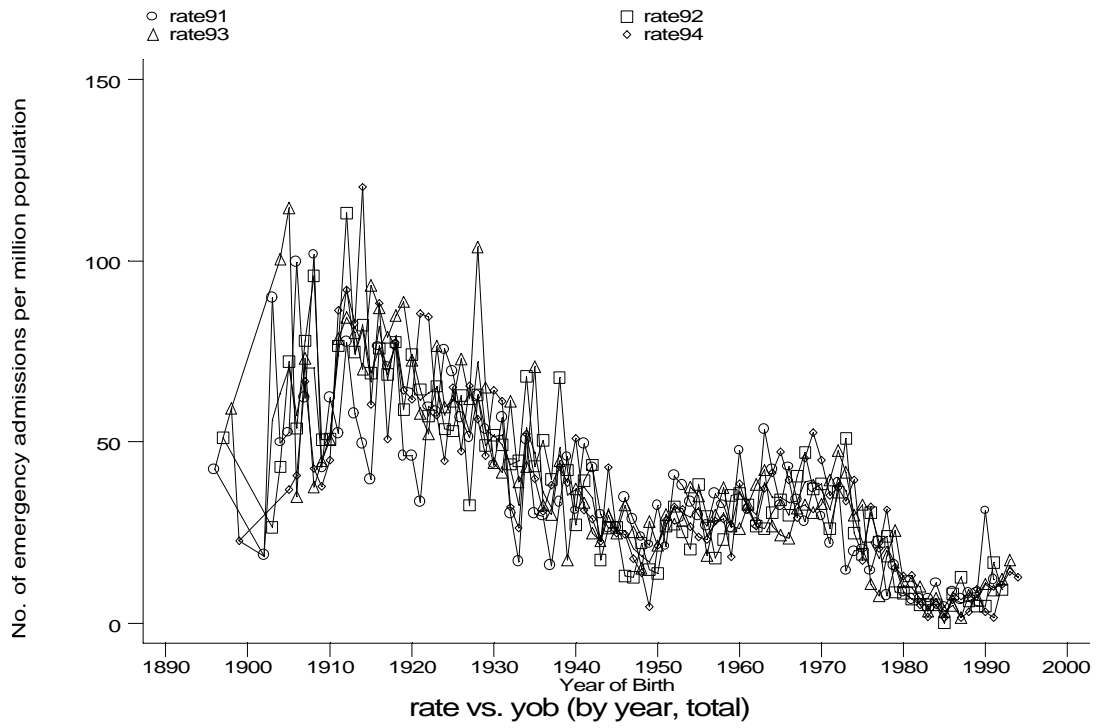
- HES Emergency admissions, England, April 1991-December 1994



h1e6h.gph
6. Respiratory tuberculosis

Age-sex distributions, yearly trends and cohort analysis (crude rates)

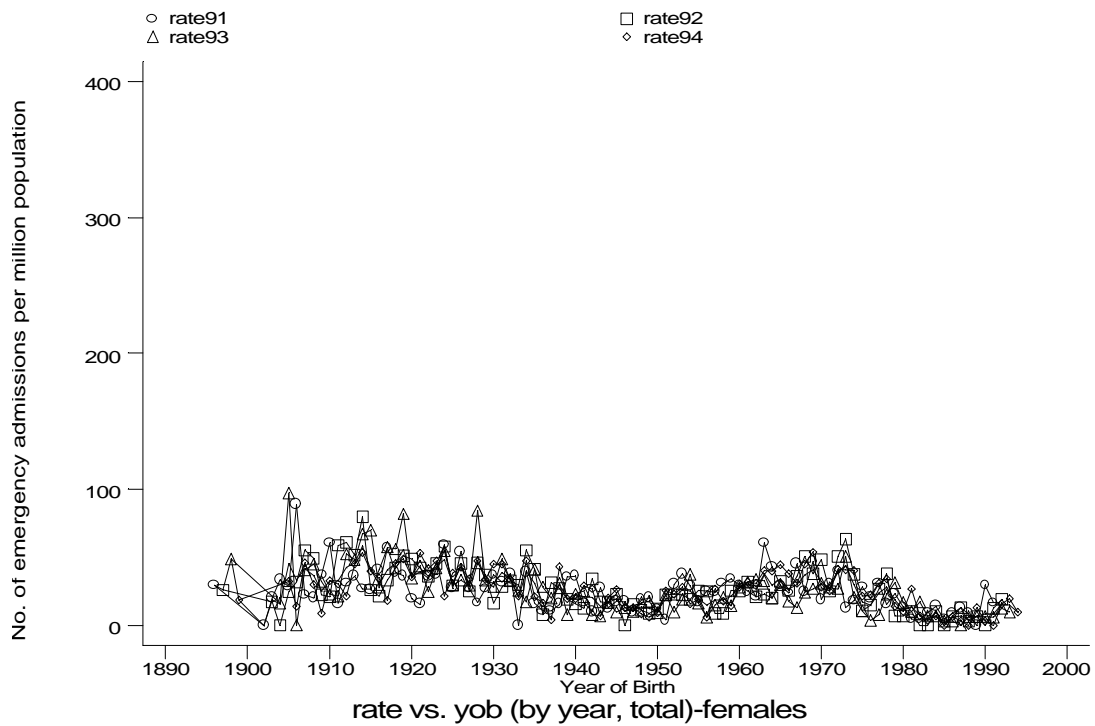
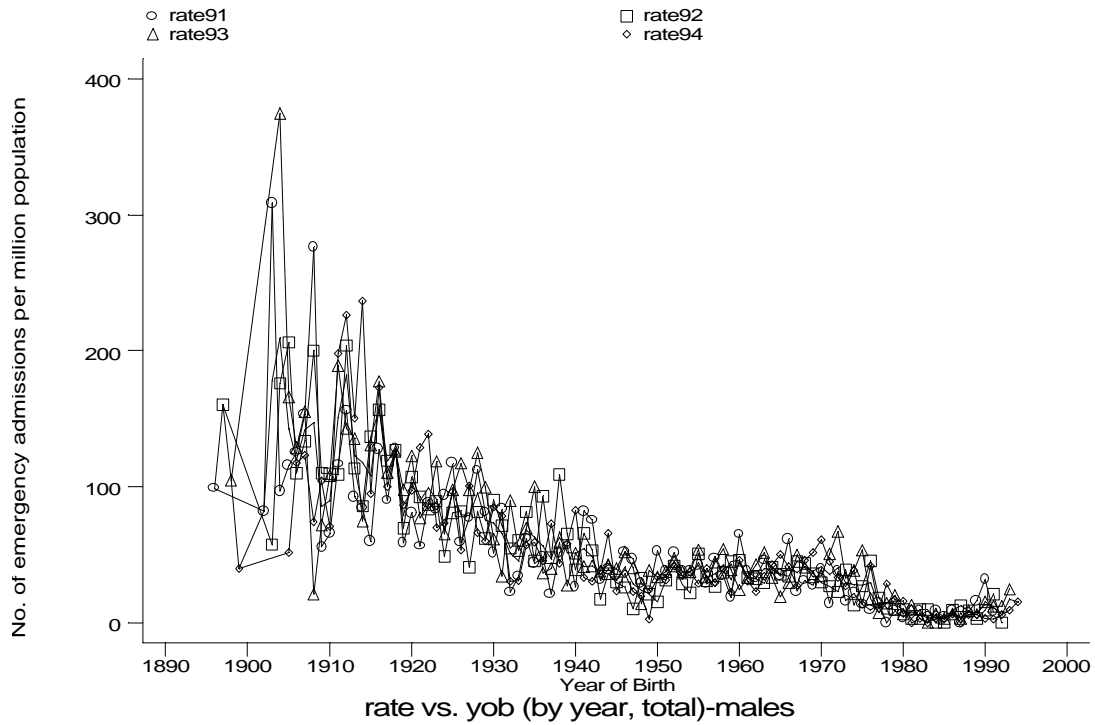
- HES Emergency admissions, England, April 1991-December 1994



h1e6i1.gph
6. Respiratory tuberculosis

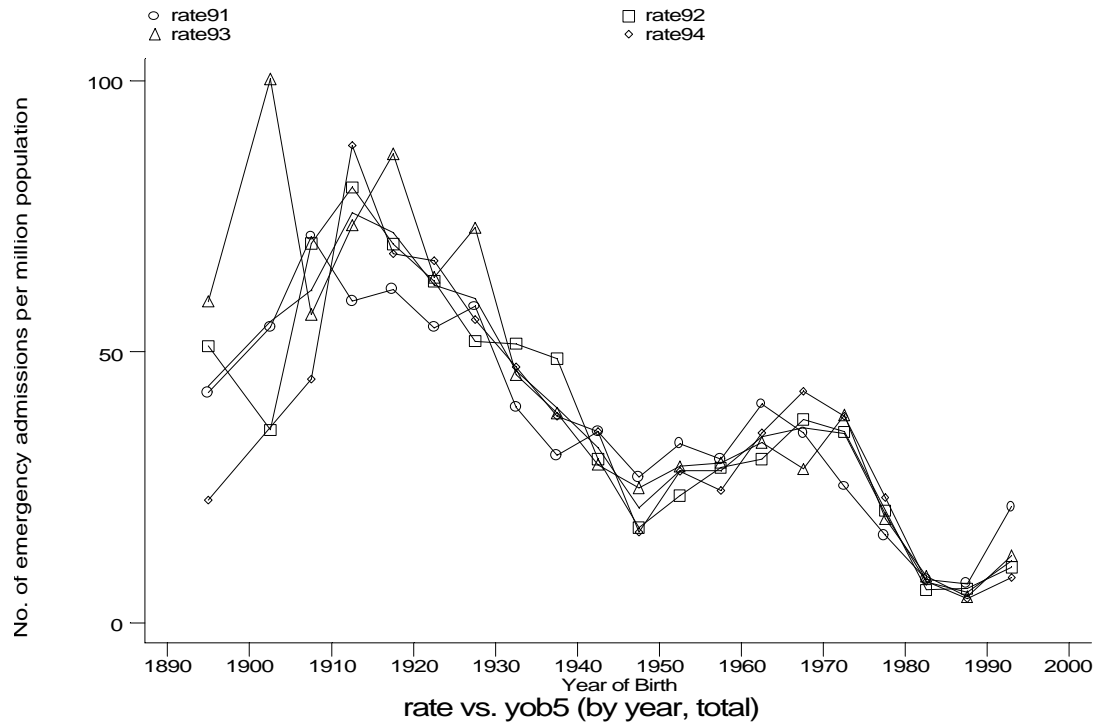
Age-sex distributions, yearly trends and cohort analysis (crude rates)

- HES Emergency admissions, England, April 1991-December 1994



Age-sex distributions, yearly trends and cohort analysis (crude rates)

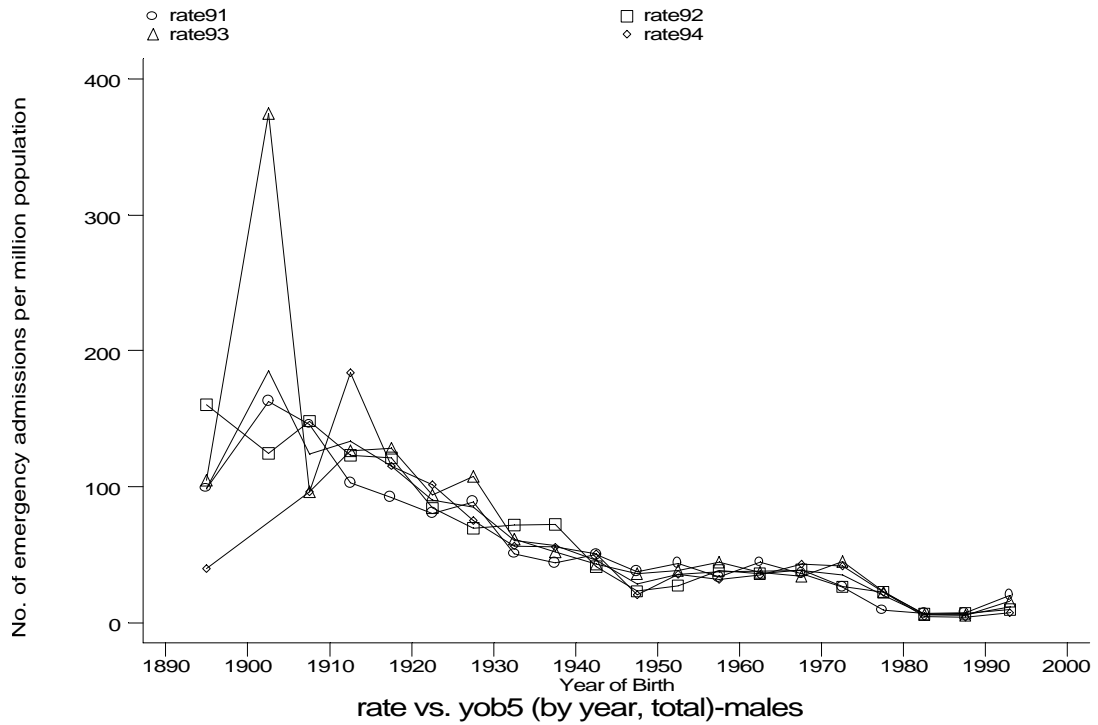
- HES Emergency admissions, England, April 1991-December 1994



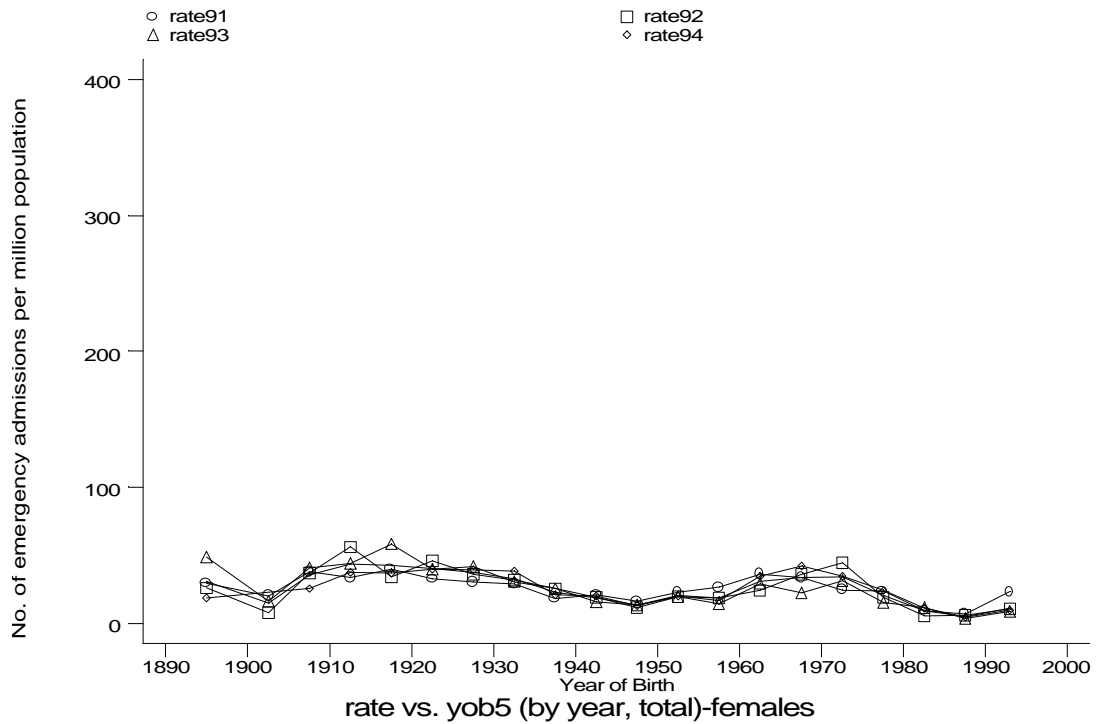
h1e6j1.gph
6. Respiratory tuberculosis

Age-sex distributions, yearly trends and cohort analysis (crude rates)

- HES Emergency admissions, England, April 1991-December 1994



h1e6j1m.gph: MALES
6. Respiratory tuberculosis



h1e6j1f.gph: FEMALES
6. Respiratory tuberculosis