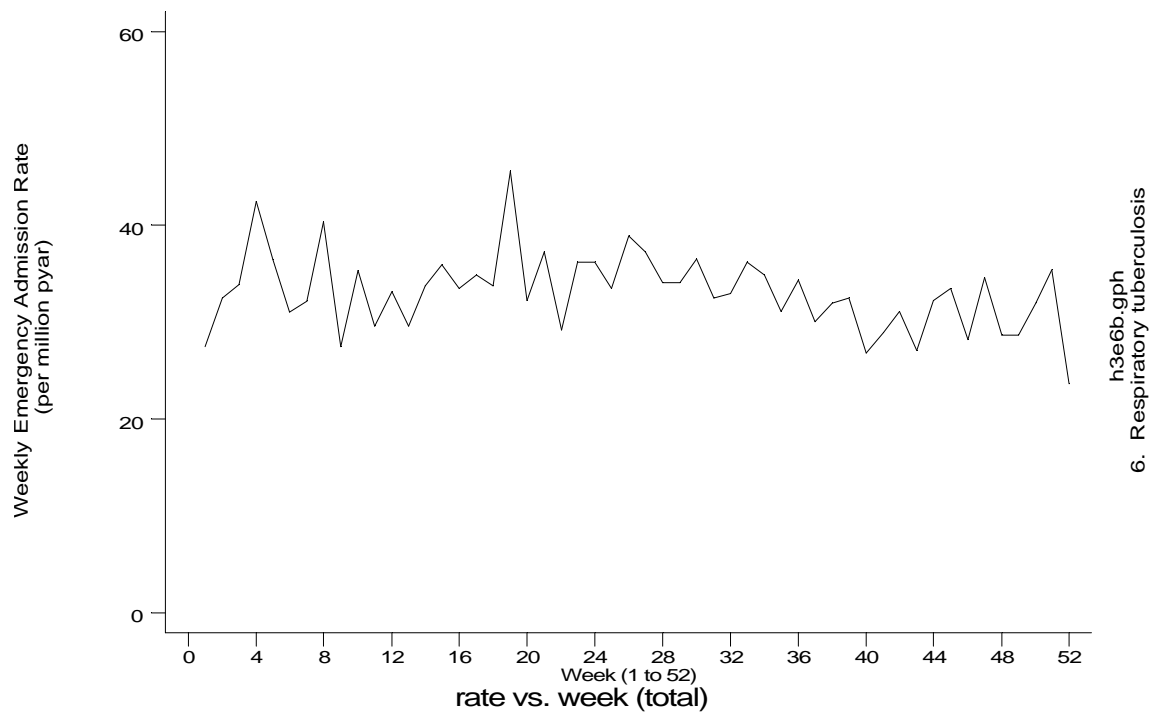
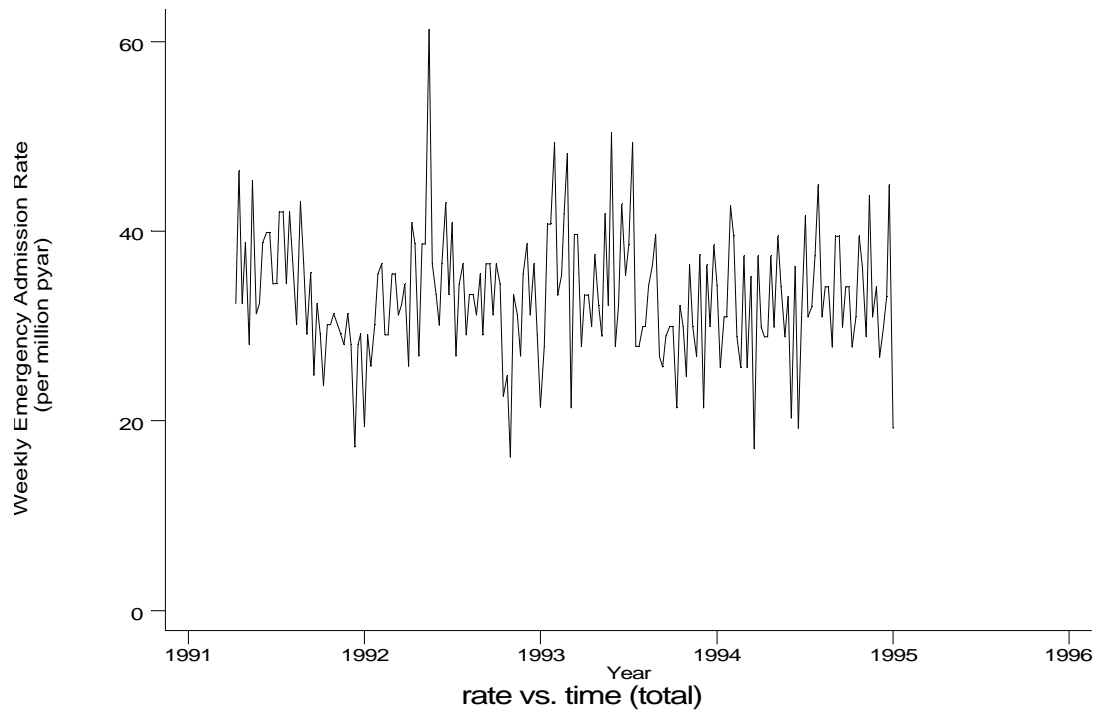
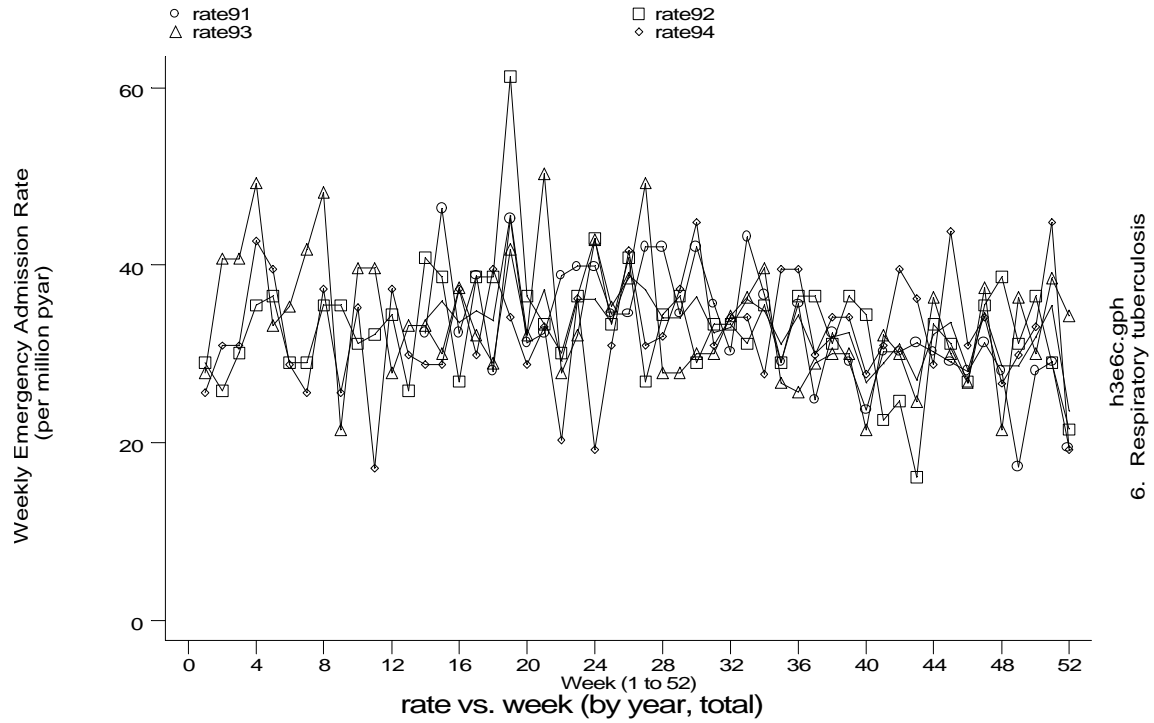


- HES Emergency admissions, England, April 1991-December 1994



A11 Tuberculosis standard output graphs
Seasonality (crude rates by week of year)

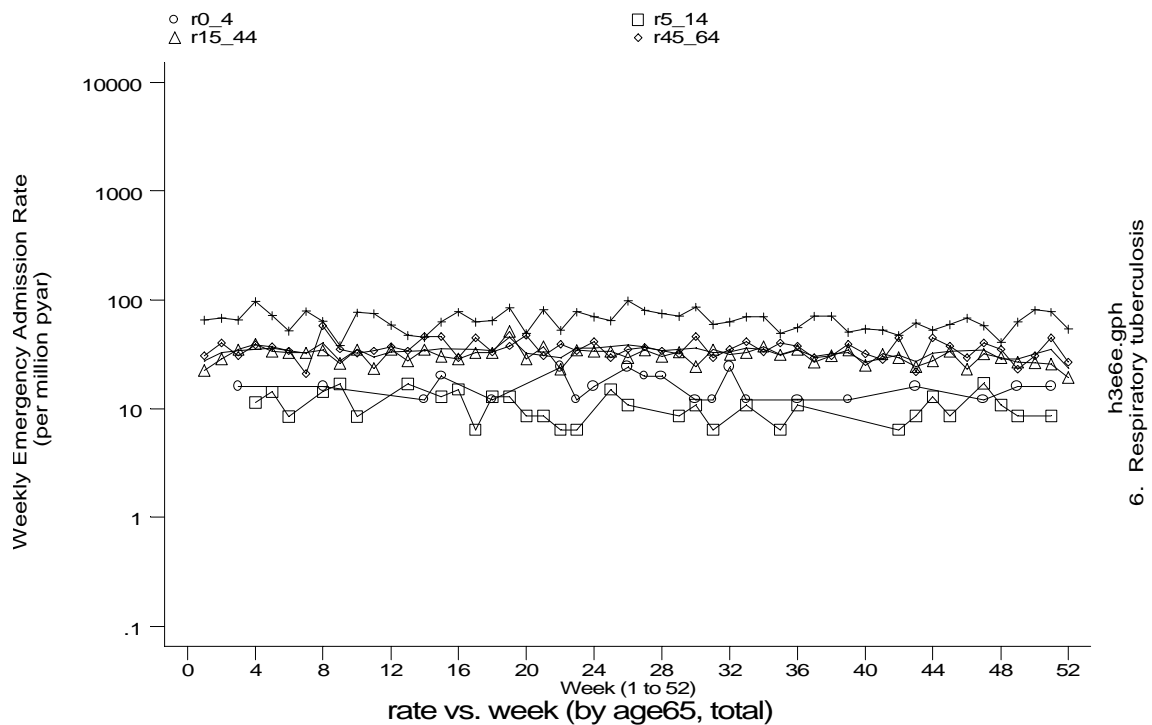
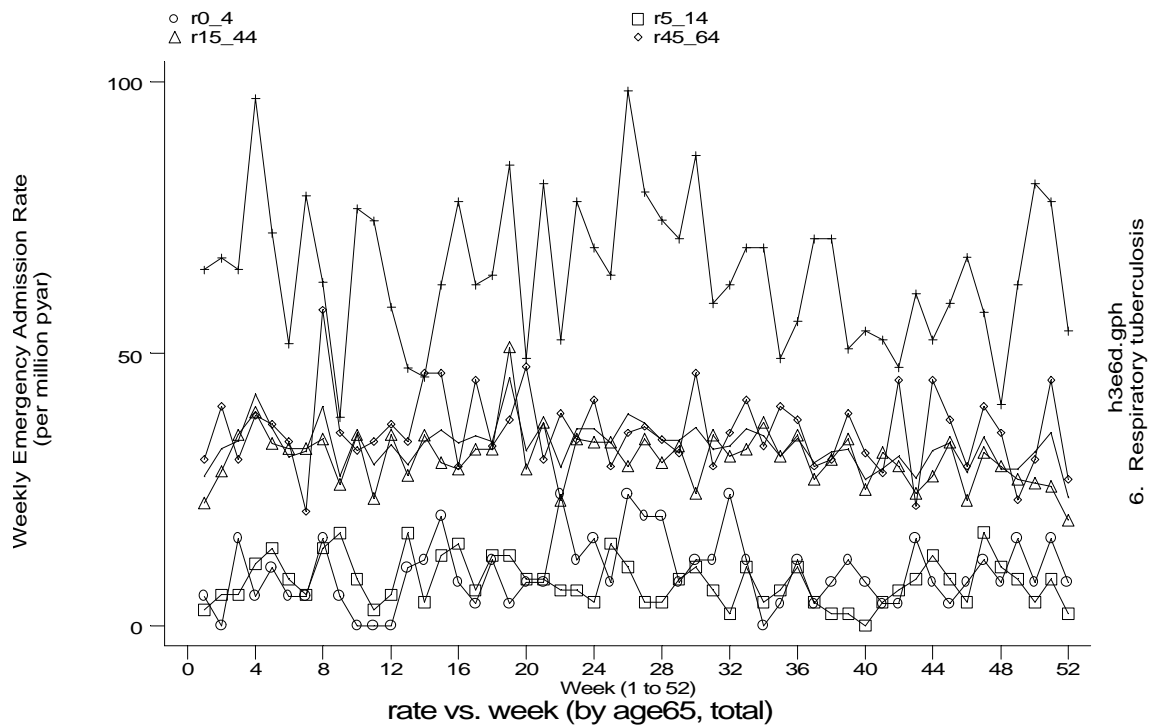
- **HES Emergency admissions, England, April 1991-December 1994**



h3e6c.gph
6. Respiratory tuberculosis

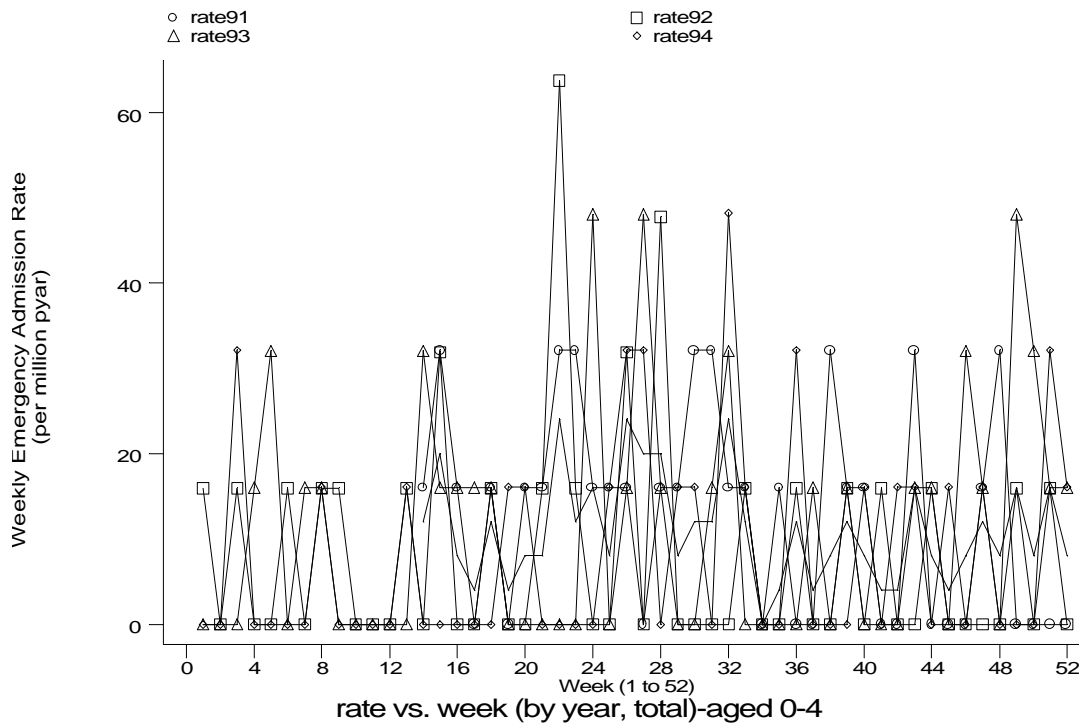
Seasonality (crude rates by week of year)

- HES Emergency admissions, England, April 1991-December 1994

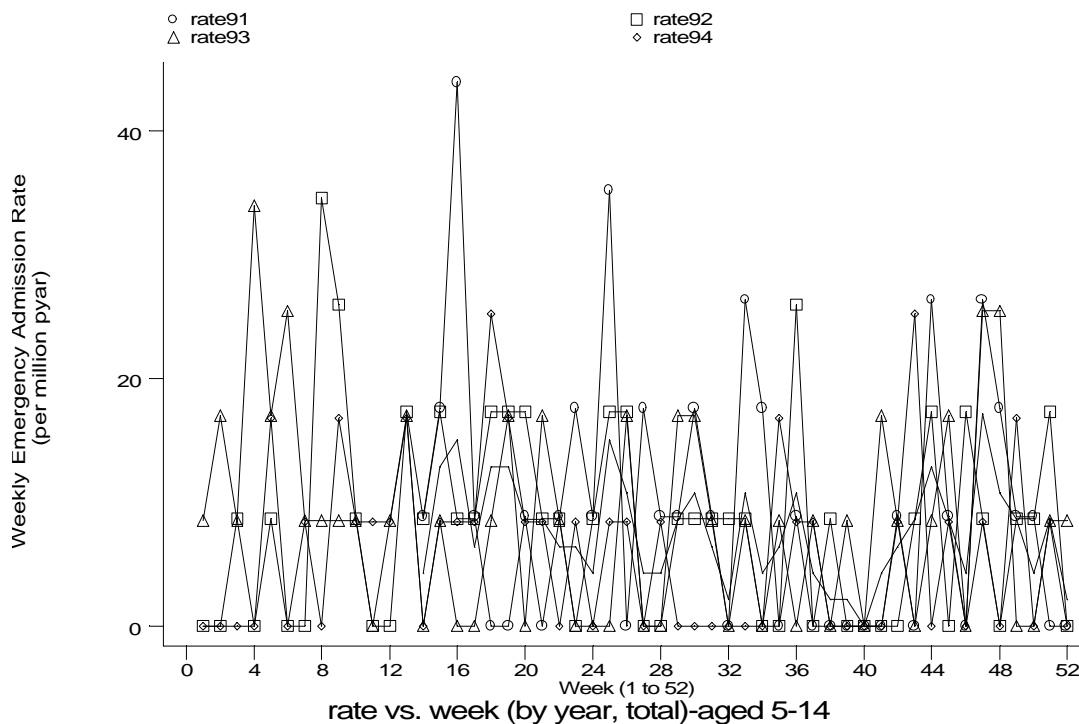


Seasonality (crude rates by week of year)

- HES Emergency admissions, England, April 1991-December 1994



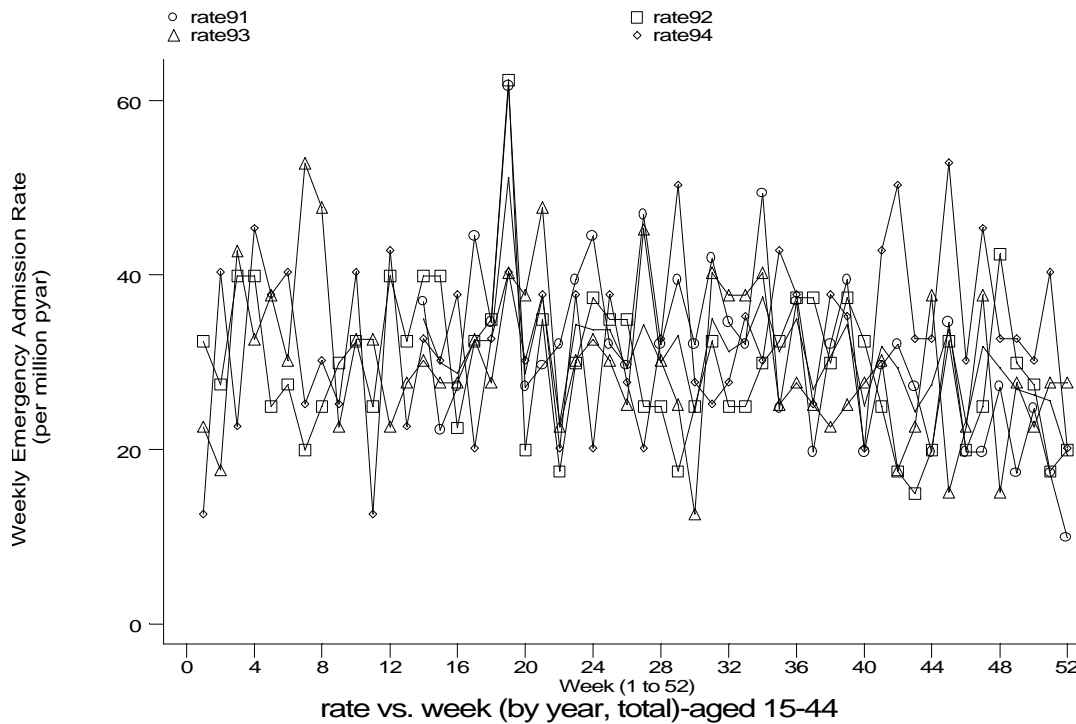
h3e6f1.gph: AGED 0-4
6. Respiratory tuberculosis



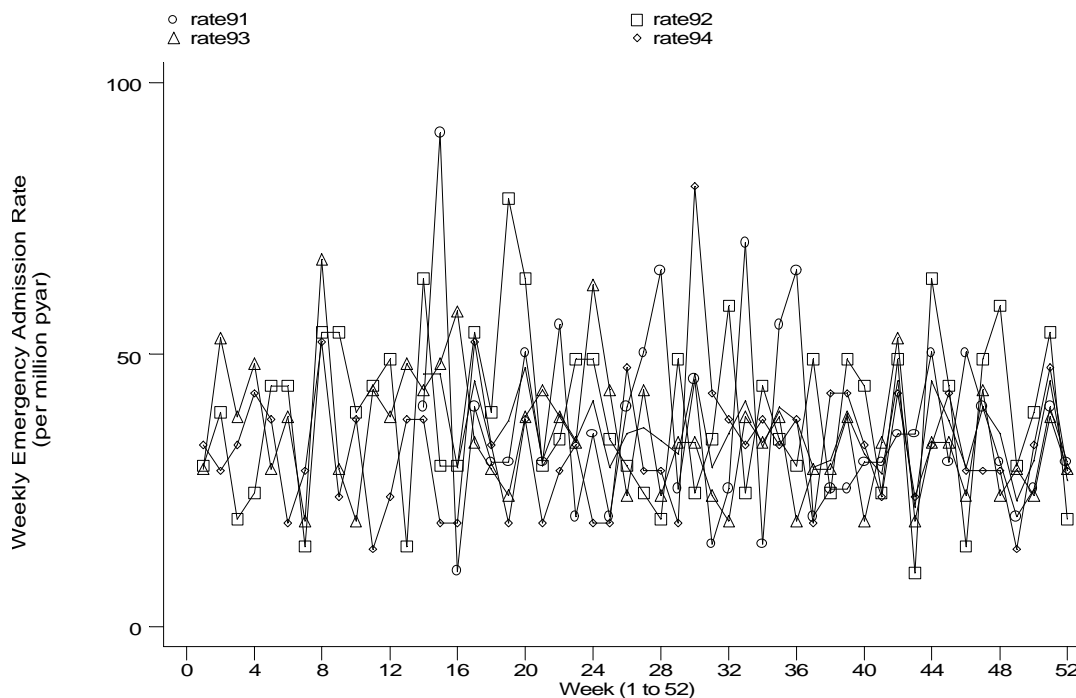
h3e6f2.gph: AGED 5-14
6. Respiratory tuberculosis

Seasonality (crude rates by week of year)

- HES Emergency admissions, England, April 1991-December 1994

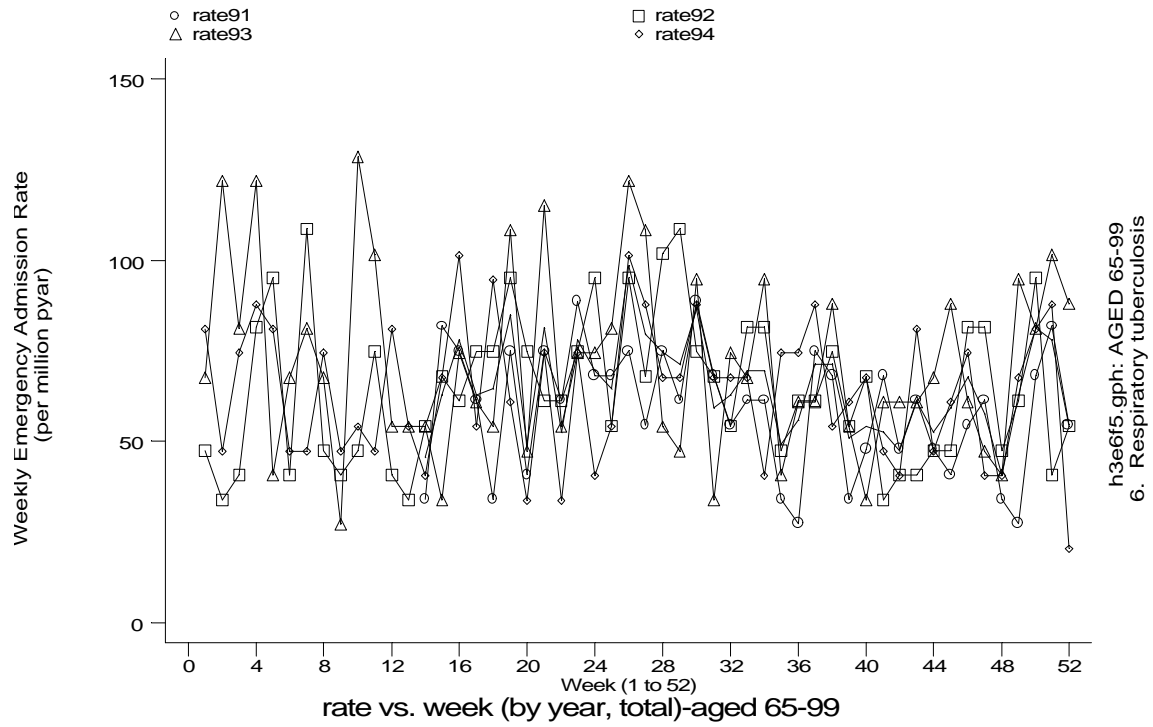


h3e6f3.gph: AGED 15-44
6. Respiratory tuberculosis



h3e6f4.gph: AGED 45-64
6. Respiratory tuberculosis

- HES Emergency admissions, England, April 1991-December 1994



Seasonality (crude rates by week of year)

- **HES Emergency admissions, England, April 1991-December 1994**